

05 Sundancer®

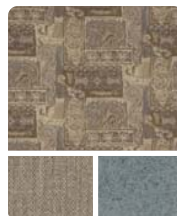




30V Blue Smoke with Concert Cherry

05 Sundancer | A class by itself.

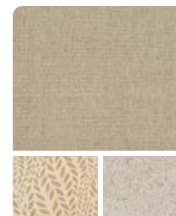
If you're looking for Class A comfort and luxury in a Class C motor home, you've found it. The 2005 Itasca Sundancer feels like a Class A motor home thanks to amenities like a Sleep Number® bed by Select Comfort™ and a 24" flat-screen TV. This year we added an available front overhead bunk with a side-mounted 20" TV/DVD combo. It's all part of our SmartSpace™ design philosophy that makes the most of interior space with features that are functional and user friendly, putting the Sundancer at the top of its class in comfort and style.



Blue Smoke



Cosmic Sage



Alabaster



Portsmouth
Oak



Concert Cherry



Washed Maple

❏ The Sundancer is very inviting with residential features and refinements such as the luxurious satin finish to the cabinetry. A single thermostat controls both heating and air conditioning, which can be enhanced with the available heat pump that helps warm the coach on cool mornings without starting the furnace. Satisfy any appetite with a home-cooked meal in the well-appointed galley. A microwave/convection oven and a sealed three-burner Amana® range/oven both come standard, along with a vented range hood. Solid-surface countertops, sink covers and a flip-up countertop provide ample workspace while the large two-door refrigerator/freezer and pantry (NA 31C) offer plenty of food storage.



Sit back and watch the big game on the 24" flat-screen TV (shown above). Add the available DVD/VCR combo and Deluxe Sound System with 5-channel QSurrround™ to experience movies with theater-quality sound. An available 300 watt inverter lets you enjoy the entertainment center even when shoreline or generator power is not available. If you select the available overhead bunk (left), a cabinet-mounted 20" TV/DVD combo is provided.



The ergonomic dash is accented by the available dash appliqué. Smart features like power door locks and power windows are at your fingertips. An auxiliary start switch is also close at hand to give you second life if your battery loses its charge. You'll appreciate automotive features like dual airbags and remote keyless entry for the cab doors and entrance door.



The Benchmark™ full comfort dinette incorporates innerspring seat cushions that provide the look, feel and comfort of residential furniture. The seats also flip up to reveal spacious storage areas. The 2005 Sundancer is outfitted with additional seat belts, providing you with greater seating flexibility while traveling. There's even an anchor for a child safety seat.



The bedroom slideout, on the 27P and 30V, creates a spacious area for a full-size wardrobe and a desk/vanity area. The desk/vanity area has a flip-up mirror and doubles as a desk or workstation.



The bedroom features Sleep Number bed by elect Comfort. Hand-held emotes on each side of the bed let you quickly and independently adjust the mattress firmness to your deal level of comfort and support...your Sleep Number, which is the Key to a Perfect Night's Sleep!™



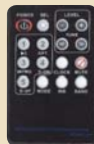
When you move between the cab and living area, you'll appreciate the all-new Trimline™ console. This Winnebago Industries® exclusive features two cup holders, a glove compartment and a storage compartment.



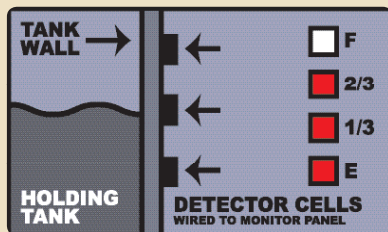
The available rearview monitor mounts neatly between the visors for improved visibility. A one-way audio feature helps for guided backing and maneuvering.



Stay in touch around the campsite using the available two-way radios. Each radio has up to a five-mile range and recharges from the coach batteries in the built-in charging station.



RV-RADIO® Our engineers worked closely with the manufacturer to create the RV Radio® designed specifically for RV use. It includes an AM/FM stereo, cassette/CD player and a built-in weather band for immediate weather updates at the touch of a button. Its large control knobs and buttons are easy to operate. New for 2005, you'll find a convenient steering wheel remote and a hand-held remote for operation when you're parked.



TRUELEVEL
HOLDING TANK MONITORING SYSTEM

Winnebago Industries exclusive TrueLevel™ holding tank monitoring system incorporates Mirus™ detector cell technology to ensure accurate fresh and waste water tank level readings every time. Mirus detector cells produce a micro-electrical field that detects liquid levels from outside the tank. No more probes to corrode or clog. Just true, accurate readings every time.



The Itasca Sundancer is equipped with the StoreMore® slideout system, featured on the 27P and 31C. You'll never have to crouch under the slideout to reach your gear because StoreMore compartments extend with the slideout for easy access. Each exterior compartment features a full-length valance panel door with a single-paddle latch for easy, one-handed opening.



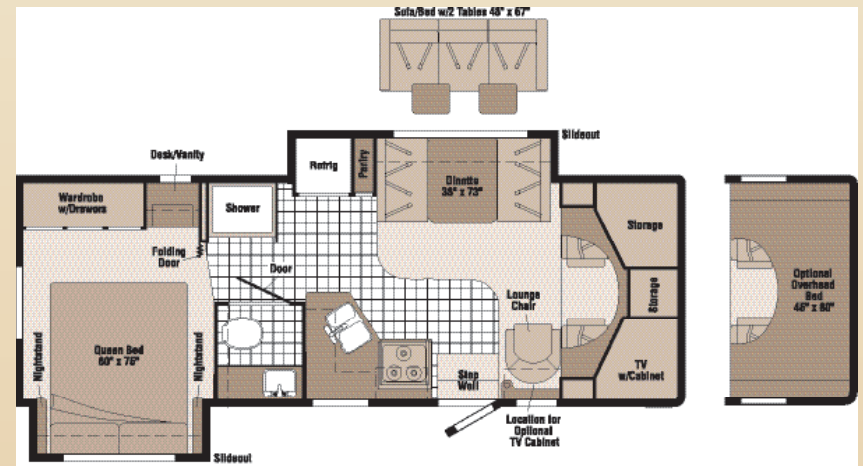
Enjoy your favorite music outdoors when you use the available exterior entertainment center. An AM/FM stereo, CD player, remote, speakers, 12-volt DC powerpoint, AC receptacle, TV jack and table are all included. You'll also find a connection for a portable satellite dish in the electrical service compartment to expand your television options (portable satellite dish not included).



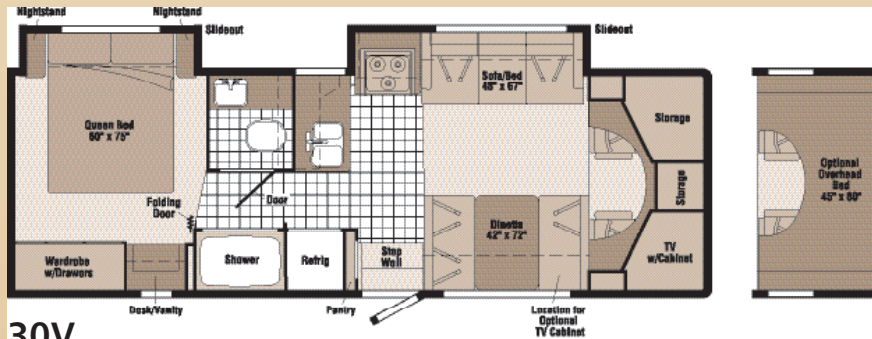
QuickPort

The exterior service center houses all of your service connections in one convenient location. It incorporates the QuickPort™ service connection hatch that keeps cords and hoses in order while allowing you to fully close the bay door.

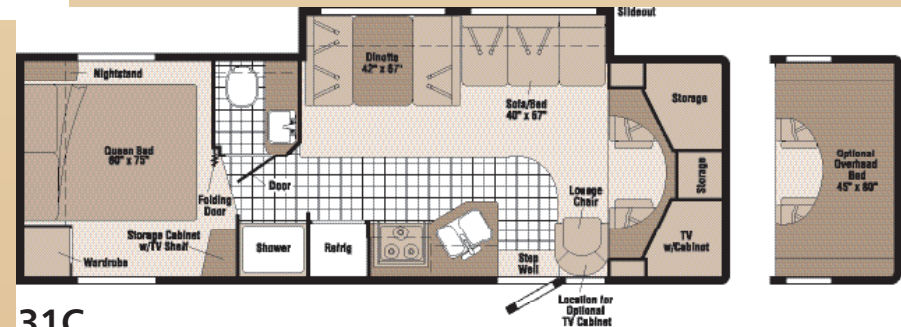
05 Sundancer | FLOORPLANS



27P



30V



31C



Vinyl Floorcovering



Seat Belts

Note: Dimensions shown are for sleeping space only and may vary due to styling differences. Dashed lines denote overhead storage areas.

EXTERIOR DESIGN

The available stylized aluminum wheels are the perfect blend of form and function. They strike a nice balance with the durable, smooth Thermo-Panel® sidewalls. Dual-glazed, thermo-insulated windows can also be added to help keep the motor home warm and cozy. If you like to bring along a car or trailer, you'll appreciate the 5,000-lb. towing capacity, 350-lb. vertical tongue-weight hitch.



Titanium Metallic



Light Autumnwood Metallic

05 Sundancer | SPECIFICATIONS

Weights & Measures	27P	30V	31C
Length	27'11"	30'2"	31'4"
Exterior Height ¹	11'7"	11'6"	11'5"
Exterior Width ²	8'5.5"	8'5.5"	8'5.5"
Exterior Storage ³ (cu. ft.)	50.1	65.5	73.6
Interior Height	6'8"	6'8"	6'8"
Interior Width	8'	8'	8'
Fresh Water Capacity w/Heater ³ (gal.)	34	39	40
Holding Tank Capacity ³ – Black / Gray (gal.)	28 / 42	29 / 35	35 / 36
LP Capacity ⁶ (gal.)	18	18	18
Fuel Capacity (gal.)	55	55	55
GCWR ⁶ (lbs.)	20,000	20,000	20,000
GVWR (lbs.)	14,050	14,050	14,050
GAWR – Front (lbs.)	4,600	4,600	4,600
GAWR – Rear (lbs.)	9,450	9,450	9,450
Wheelbase	190"	205"	216"


27P	30V	31C	Automotive
S	S	S	Chassis – Ford® E450 Super-Duty, 6.8L V10 SOHC Triton® engine, 306-hp, automatic 4-speed overdrive transmission, 4-wheel ABS, 130-amp. alternator, dual airbags
S	S	S	Tire spare , Tire Tool wrench, Trailer Hitch ⁶ 5,000-lb. draw bar/350-lb. maximum vertical tongue weight & wiring, Wheel Liners stainless steel (4)
O	O	O	Air Springs auxiliary rear
O	O	O	Wheels stylized aluminum (4), hubcover kits

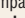


27P	30V	31C	Cab Area & Driver Conveniences
S	S	S	Beverage Holder Trimline™, Cab Seats (fabric) w/3-point adjustable seat belts, armrest, lumbar support, multi-adjustable slide/recline, Cigarette Lighter/12-Volt DC Powerpoint , Cruise Control , Curtain cab divider, Domelights , Floor Mats (rubber) driver & passenger, Hood Release , Power Door Locks w/ remote control, driver/pass/main entry, Power Cab Windows , Rearview Mirror adjustable, Steering Wheel tilt w/power assist, Sunvisors (2), Trim Panels driver & passenger doors w/map pocket
O	O	O	Cab Seats UltraLeather HP™
O	O	O	Instrument Panel/Beverage Cover Carbon Fiber Black appliqué
O	O	O	Monitor System rearview w/single camera & one-way audio, Audiovox®




27P	30V	31C	Entertainment
S	S	S	(Cab) AM/FM stereo, cassette/CD player, weather band, speakers (4), Radio Power Switch main/auxiliary, Radio Remote Controls hand-held & steering wheel mounted, Satellite System Ready , Telephone Input & Interior Jack , TV 24" Flat-Screen Color AC Stereo ⁴ w/remote, RCA® TV Enhancement Package antenna (amplified), 12-volt DC powerpoints, interior jacks, coax wiring, cable input, Video Selection System ¹

27P	30V	31C	Entertainment
O	O	O	Deluxe Sound System ⁴ ; w/5-channel QSround™ sound, amplifier, speaker system
O	O	O	DVD/VCR ⁴ combo, stereo w/remote, RCA®
O	O	O	Entertainment Center (Exterior) AM/FM radio w/CD player & remote, DC receptacle, AC duplex receptacle, TV jack, radio antenna, speakers (2), lockable compartment, removable table
O	O	O	Radios (4) two-way w/docking port & charger
O	O	O	Satellite Dish Antenna RV digital, elevation sensing unit
O	O	O	TV/DVD Combo 20" flat-screen, AC color w/remote, RCA® cabinet, w/front bunk option

27P	30V	31C	Interior
S	S	S	Ceiling fabric , Clock , Cupholder(s) ; Lights ceiling, incandescent w/wall switches, Light ¹ dinette, Light halogen (over front TV cabinet), Lights reading, Mini Blinds (galley), Powerpoint 12-volt DC, Shades day/night pleated (lounge, dinette, bedroom)
O	O	O	Bunk front overhead w/mattress, ladder, side windows w/curtains, pleated privacy curtain, storage space, 20" TV/DVD combo w/cabinet (lounge chair window NA 27P, 31C)
		S	Light swivel, above lounge chair
	S	S	Mirror wall
	S	S	Picture
O	O	O	Windows flush-mounted, dual-glazed/thermo-insulated

27P	30V	31C	Cabinetry
S	S	S	Portsmouth Oak stile-and-rail construction w/arched raised-panel inserts on upper doors
O	O	O	Concert Cherry stile-and-rail construction w/arched raised-panel inserts on upper doors
O	O	O	Washed Maple stile-and-rail construction w/arched raised-panel inserts on upper doors
27P	30V	31C	Countertops
S	S	S	Laminate dinette, bath, bedroom, Solid-Surface galley
27P	30V	31C	Floorcovering
S	S	S	Carpeting w/pad, Vinyl bath, galley & stepwell area
27P	30V	31C	Furniture
S	S	S	 Dinette w/access to storage below, cupholders (2)
S		S	Chair lounge, hoop-base (swivel/glider), (must be secure when traveling)
	S	S	Sofa w/throw pillows & access to storage below
O			Sofa w/2 tables & throw pillows, adjustable reading lights
27P	30V	31C	Galley
S	S	S	Countertop flip-up extension, Faucet Moen® single-control, Light ceiling, fluorescent, Microwave/Convection Oven touch control, Samsung® Range sealed 3-burner w/oven, Amana® Range Hood vented w/light & fan, Refrigerator/Freezer large double-door, Norcold® Sink double-bowl, molded w/sink covers, Wall Border
S	S		Pantry
O	O	O	Refrigerator/Freezer large double-door w/icemaker, Norcold®
	S		Wastepaper Basket
O	O	O	Water Purification w/separate faucet
27P	30V	31C	Bath
S	S	S	Cabinet lavatory, Cabinet medicine, Clothes Rod removable, Faucet (lavatory) dual-control, Faucet (shower) dual-control w/flexible showerhead, Light shower, Makeup lights, Magazine Rack , Mirror w/frame, Shower , Shower Door(s) textured glass, Shower Skylight , Sink rectangular, Tissue Holder , Toilet w/foot-pedal flush, Towel Bar , Towel Rack 3-rod, mounted to door
S	S		Towel Ring
27P	30V	31C	Bedroom
S	S	S	Bed queen, Sleep Number® w/underbed storage, bedspread, pillows, pillow shams, throw pillow, Lights decorative wall lamp(s), Lights reading, Nightstand(s) , Wall Border , Wardrobe w/drawers & mirrored door(s), (door-activated light on 27P & 30V)
	S		Headboard
	S		Shirt Closet w/2 drawers
S	S		Vanity Cabinet w/flip-up countertop, mirror, stool

27P	30V	31C	Exterior
S	S	S	Awning Rails w/rain gutters, Door entrance w/separate screen door, deadbolt lock, remote keyless entry, Entrance Door Steps double, electric w/doorjamb switch, Graphics Package Titanium Metallic or Light Autumnwood Metallic, Ladder , Light porch w/interior switch, Mirrors plate-mounted, electric/remote w/defrost, Mudflaps rear, Receptacle AC duplex, Running Boards fiberglass w/front wheel lips, Sidewall Skin one-piece smooth fiberglass, Storage Compartments valance panels, trunk liner, gas cylinders, TriMark® KeyOne™ System, paddle latch, lights
O	O	O	Awning patio
27P	30V	31C	Systems
S	S	S	Air Conditioner (Roof) 14,800 BTU, ceiling-ducted w/wall thermostat, Auxiliary Start Circuit, Batteries (Coach) (2) Group 24 deep-cycle, Battery (Coach) disconnect system, Battery Charge Control automatic dual, Drain water tank, Electrical Distribution System AC & DC breaker panels, 45-amp. converter/charger, Furnace 30,000 BTU, low profile, Generator/Shoreline Automatic Changeover Switch , Generator Prep Kit , Monitor Panel battery condition gauge, generator hourmeter gauge, generator start/stop switch, holding tank levels, LP tank level, TRUCK LEVEL holding tank monitoring system, water heater light(s), water heater switch, water pump switch, water tank level, Holding Tank Flushing System black tank only, Power Cord 30-amp. 25', Powerpoints(s) 12-volt DC, Roof Vent ⁴ nonpowered, lounge, bedroom, Roof Vent powered, bath, Service Center (Electrical) cable input,  QuickPort service connection hatch, power cord, telephone input, portable satellite dish hookup, Tank holding, heated compartment, Tank LP, permanent mount w/gauge, Water Heater 6-gallon, electronic ignition, LP gas, Water System Winterization Package water heater bypass valve & siphon tube, Water Hookup city, Water Pump demand, Water Tank Fill gravity, locking door
O	O	O	Generator ⁴ 4,000 watt, Onan® MicroQuiet™, gas
O	O	O	Home Comfort Plus Package ⁴ roof A/C heat pump, auxiliary automotive heater, nonpowered insulated roof vent (bedroom), powered insulated ventilator fans (lounge, bath)
O	O	O	Inverter DC/AC, 300 watt
O	O	O	Roof Vent powered ventilator fan,⁴ lounge
O	O	O	Solar Panel ⁴ 10 watt w/battery charger
O	O	O	Water Heater 6-gallon, electronic ignition, 110 vac/LP gas w/motoraid, includes energy management system
S		S	Service Compartment (Drainage/Water) air chucks,⁴ pressurized city water hookup/tank diverter fill, drainage valves, exterior wash station w/pump switch, 10' sewer hose, holding tank flushing system,  QuickPort service connection hatch
	S		Service Compartment (Drainage) drainage valves, 10' sewer hose,  QuickPort service connection hatch

27P	30V	31C	Systems
	S		Service Compartment (Water) air chucks,⁴ pressurized city water hook-up/tank diverter fill, exterior wash station w/pump switch, holding tank flushing system,  QuickPort service connection hatch
27P	30V	31C	Slideouts
	S		 Slideout Room dinette/pantry/refrigerator w/slidoorm cover, Slideout Room bed w/slidoorm cover
	S		Slideout Room sofa/range w/slidoorm cover, Slideout Room bed w/slidoorm cover
	S		 Slideout Room sofa/dinette w/slidoorm cover
27P	30V	31C	Safety
S	S	S	Airbags driver & passenger, Assist Bar interior, Assist Handle exterior, acrylic w/logo, Bumpers front & rear, Detectors/Alarms LP leak, smoke, carbon monoxide, Child Seat Tether Anchor , Fire Extinguisher 10 B.C., Ground Fault Interrupter , Light center high-mount brake lamp, Lights courtesy w/wall switches, Seat Belts cab, 3-point, Seat Belts lap (in selected areas), Window escape
27P	30V	31C	Warranty ⁷
S	S	S	12-month/15,000-mile basic limited warranty ⁵ 36-month/36,000-mile warranty on structure ⁵ 10-year limited parts-and-labor warranty on roof skin ⁵

- The height of each model is measured to the top of the tallest standard feature and is based on the curb weight of a typically equipped unit. The actual height of your vehicle may vary by several inches depending on chassis or equipment variations. Please check with your dealer for further information.
- Sundancer floorplans feature a wide-body design — over 96". In making your purchase decision, you should be aware that some states restrict access on some or all state roads to 96" in body width. Before making your purchase decision, you should confirm the road usage laws in the states of interest to you.
- The load capacity of your motor home is designated by weight, not by volume, so you cannot necessarily use all available space when loading your motor home.
- Not all items available in combination. See dealer for details.
- Capacities shown are tank manufacturer's listed water capacity (W.C.). Actual filled LP capacity is 80% of listing due to overfilling prevention device on tank.
- Actual towing capacity is dependent on your particular loading and towing circumstances which includes GVWR, GAWR, and GCWR as well as adequate trailer brakes. Please refer to the Operator's Manual of your vehicle for further towing information.
- See separate chassis warranty details provided in owner's packet.
- See your dealer for complete warranty information.
- Capacities are based on measurements prior to tank installation. Slight capacity variations can result due to installation applications.

NA Not Available

S Standard

O Optional

Winnebago Industries® continuing program of product improvement makes specifications, equipment, model availability and prices subject to change without notice. Comparisons to other motor homes are based on the most recent information available.



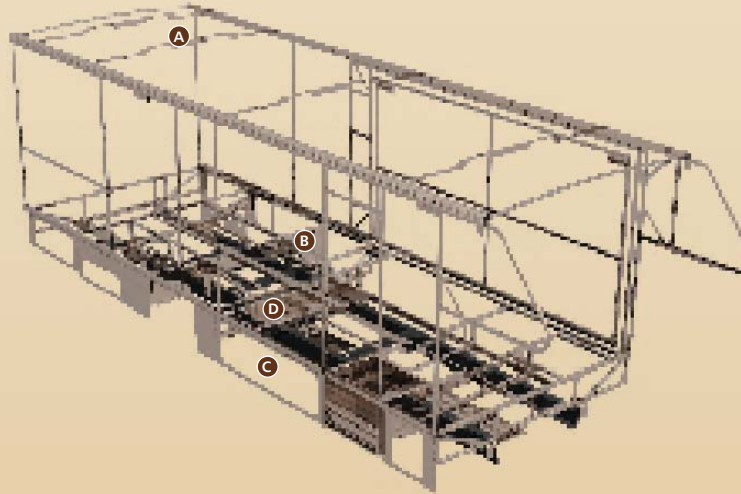
Not all motor homes are created equal. SuperStructure® is the term given to Winnebago Industries' structural motor home design and construction. Rather than a single component, it is the culmination of design integration that incorporates steel and aluminum sub-structures, composite-design laminated floor risers, interlocking joint technology and Thermo-Panel® floor, roof and sidewalls to form an incredibly strong, durable vehicle body.

A Critical steel components are treated with an advanced electrodeposition coating process that provides superior corrosion protection.

B Laminated risers feature a welded aluminum core for superior strength and provide a stable base for floor structure and storage compartments.

C Storage compartments attach to outrigger assemblies so the weight of stowed items is carried and dispersed throughout the foundation substructure.

D The foundation substructure assembly is precision-aligned to maximize strength and cross-coach support as well as durability.



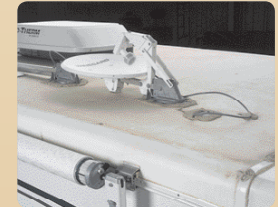
Interlocking joint construction utilizes advanced aluminum structural components to create integrated floor-to-sidewall and sidewall-to-roof joints. This design effectively distributes the weight of the walls and roof, making a stronger and more durable body than competitor designs that require screws to carry the weight.

We invented Thermo-Panel® sidewall construction and, over the years, have perfected this innovative composite construction process. It combines an exterior fiberglass panel, high-density block foam insulation and welded aluminum support structures to create some of the strongest, most durable and lightweight sidewalls in the industry.

Built to a higher standard. The Sundancer features a crowned, one-piece fiberglass roof, backed with a 10-year limited parts-and-labor roof skin warranty. Fiberglass offers superior strength, attractiveness and durability over the rubber roofs found on many competitive models which can chalk, streak and degrade over time. Fiberglass also provides increased puncture and tear resistance.



1-year-old Itasca fiberglass roof



1-year-old competitor's rubber roof



Committed to service. We back our motor homes with the industry's best service after the sale.

- 12-month/15,000-mile basic limited warranty
- 36-month/36,000-mile warranty on structure
- Standard 10-year limited parts-and-labor roof skin warranty
- Complimentary 24-hour roadside assistance program
- TripSaver Fast Track Parts. TripSaver guarantees that in-stock warranty parts ship directly to your dealer within 24 hours.
- National dealer service network



Recognized quality. Recreation Vehicle Dealer Association members annually rate RV manufacturers on the quality of their products, and sales and service support. Winnebago Industries has achieved the coveted Quality Circle award every year since its inception, the only RV manufacturer to do so.

WARNING: Joining WIT has been known to cause excessive fun. Winnebago-Itasca Travelers (WIT) is a club for owners of Winnebago Industries motor homes. WIT is a great way to meet people and offers you:

- Caravans and rallies
- Local and state group activities
- RV travel benefits

winnebagoind.com
NYSE listing: WGO

For Sales and Service Information Contact:



©2004 Winnebago Industries, Inc.



Printed in USA

Seat belts are your most important hookup. Always buckle up.