



06 CAMBRIA™





## 06 CAMBRIA

26A MANGO TWIST WITH SIERRA MAPLE



### HIT THE ROAD.

The Itasca Cambria made quite a splash when it debuted last year with its sleek design and incredible drivability. For 2006, an all-new model joins the winning lineup with a unique bed/sofa combination that expands your leisure space without sacrificing comfort. It's just one example of how our SmartSpace™ design philosophy creates

more comfortable interiors by focusing on innovative features that increase functionality. Once you've discovered the convenience of the Cambria, with its rich interior colors and upscale, user-friendly options, don't be surprised if weekend trips extend into full weeks on the road in your new motor home.

 SMARTSPACE



## FULLY LOADED.

It's easy to make yourself at home in a motor home full of residential features like day/night pleated shades and thermostat-controlled heating and air conditioning. The Cambria is furnished with premium Stitchcraft furniture, including the moveable, hoop-base lounge chair in the 26A. All of the furniture can be upgraded with the UltraLeather HP™ package.

Your entertainment options start with a 24" flat-face TV and can be upgraded with a DVD player and even an additional 15" LCD TV in the 29H bedroom.

Cooks will appreciate the space-saving features in the galley, especially the slideout pantry (NA 29H) and double-bowl sink with cover. A water filtration system is available with a separate faucet for clear, filtered drinking water.

Other thoughtful touches include a skylight in the shower, vinyl floor-covering in the galley and bath areas, and a child safety-seat tether in the dinette.

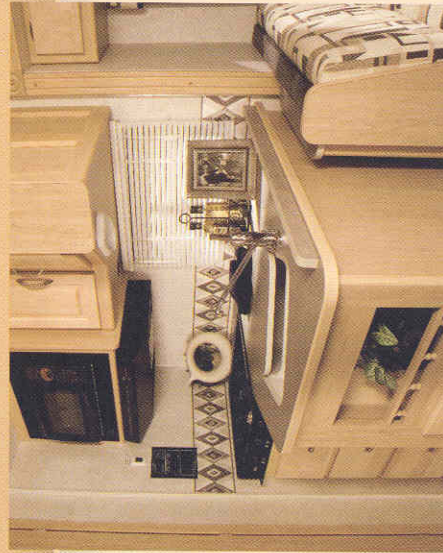


23D NIGHT MIST WITH WASHED MAPLE



HOOP-BASE LOUNGE CHAIR

**ENTERTAINMENT CENTER** Enhance movies and music with the available Deluxe Sound System with QSurround™ and an available inverter that powers the entertainment center from the house batteries when 110-volt power is not available.



**GALLEY** Galley appliances include a microwave/convection oven and your choice of a range/oven or a range top with storage below.

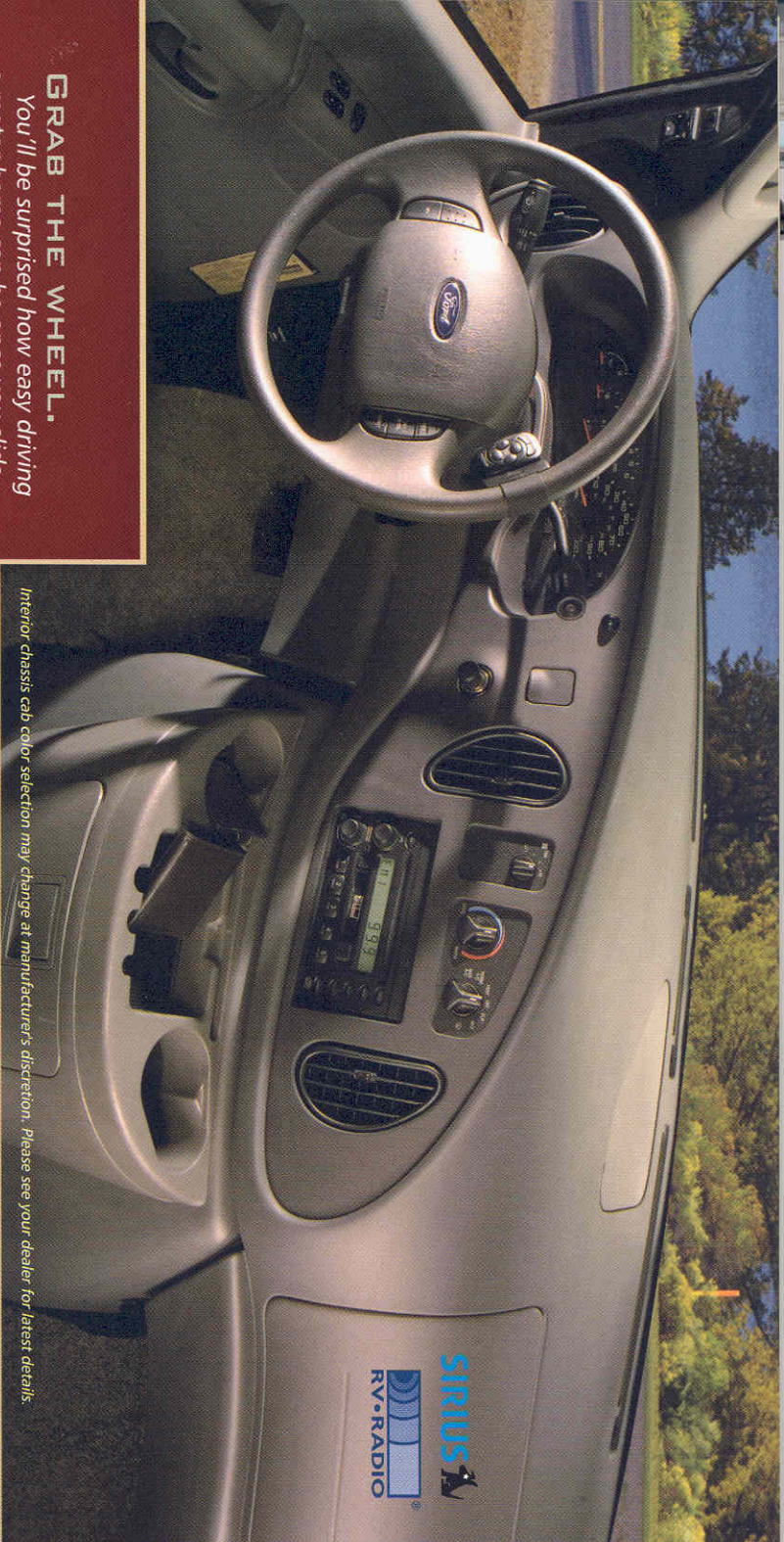


**FULL-EXTENSION DRAWER SLIDES** Allow drawers to open fully for easy access to dishes and utensils.



**DINETTE** The dinette converts easily into a spacious sleeping area. The sofa featured on the 23D and 29H also converts into a comfortable bed.





## GRAB THE WHEEL.

You'll be surprised how easy driving a motor home can be once you slide behind the wheel of a Cambria. The ride is especially comfortable in the fully adjustable, high-back cab seats. You can upgrade to Ultraleather HP™ for added luxury.

While you drive, listen to AM/FM radio or CDs on the Sirius® Satellite-ready RV Radio®. It even has a one-touch weather band so you can hear instant weather updates at the touch of a button. Large buttons and two convenient remotes make it easy to operate from anywhere in the motor home. Upgrade your RV Radio with the available Sirius Satellite\* radio package. Sirius brings you 120 channels of crystal clear programming, and a six-month subscription is complimentary with this package.

\* Sirius Satellite radio not available in Canada.

Interior chassis cab color selection may change at manufacturer's discretion. Please see your dealer for latest details.

**DASH** Winnebago Industries® exclusive Trimline™ center console provides cup holders and storage for maps and CDs, all in a sleek design that makes it easier to move between the cab and living area.



**SATELLITE DISH** The available King-Dome® in-motion digital satellite system provides television reception while you're on the road.



**KEYLESS ENTRY** The keyless remote controls power locks on the cab doors and side entrance door.



## REARVIEW MONITOR

An available LCD screen provides a clear view of what's behind you when you back into your campsite.



## TWO-WAY RADIOS

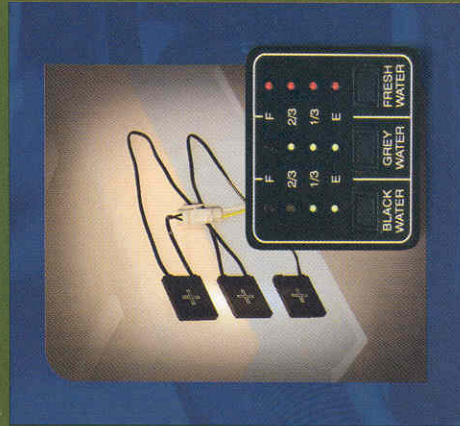
A built-in charging station houses the available two-way radios. They feature a 5-mile range so you can keep in touch around the campground.



## THE PERFECT GETAWAY.

Experienced RVers love the Cambria for its enticing features and no-hassle usability. One popular option is the exterior awning. It's a great way to create instant shade.

Service hookups are a breeze with a color-coded label system in the service center. Cambria even makes entering the motor home easier with available electric steps and a soft-touch assist handle.



**TRUELEVEL.** Inaccurate tank readings are a thing of the past thanks to our exclusive TrueLevel™ holding tank monitoring system. It incorporates Mirus™\* detector cell technology to detect liquid levels from outside the tank. No probes mean no more corrosion or clogging, just accurate readings time after time.

\*Mirus is a trademark of Material Sciences Corporation.



**EXTERIOR AWNING** Cool shade from the awning offers relief on warm summer days.



**HITCH** Bring along your favorite towable toys thanks to the standard 5,000-pound hitch.<sup>5</sup>



**EXTERIOR ENTERTAINMENT CENTER** Enjoy your favorite music with the available exterior entertainment center. It features an AM/FM stereo, CD player, 12-volt DC power point, TV jack, 110-volt outlet, speakers and a removable table.



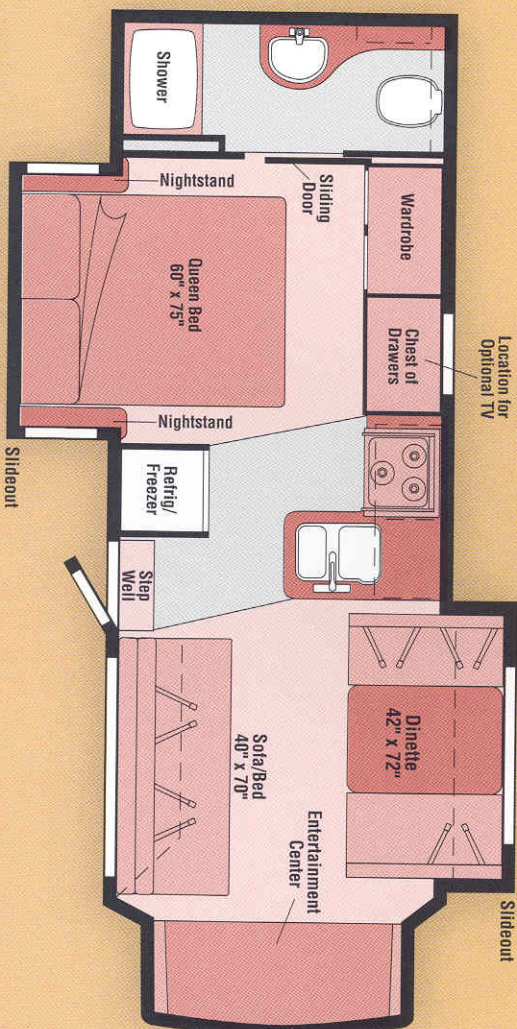
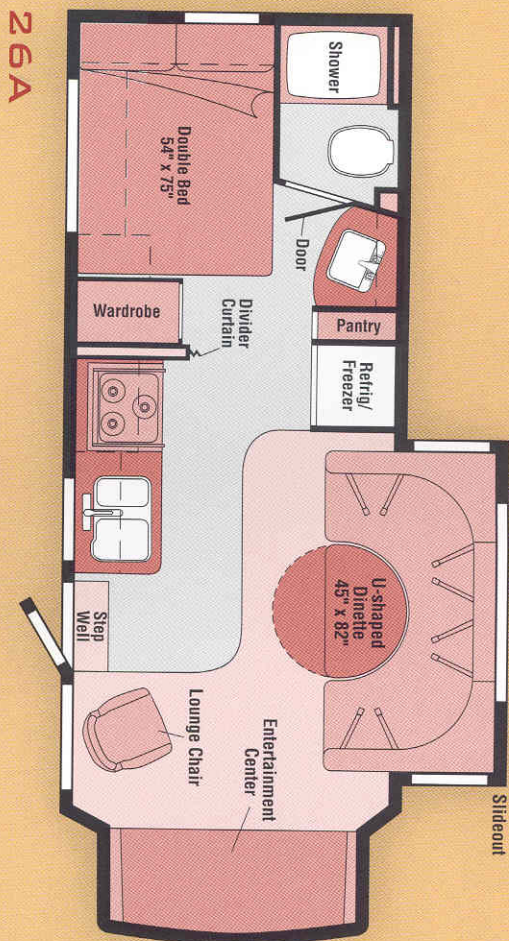
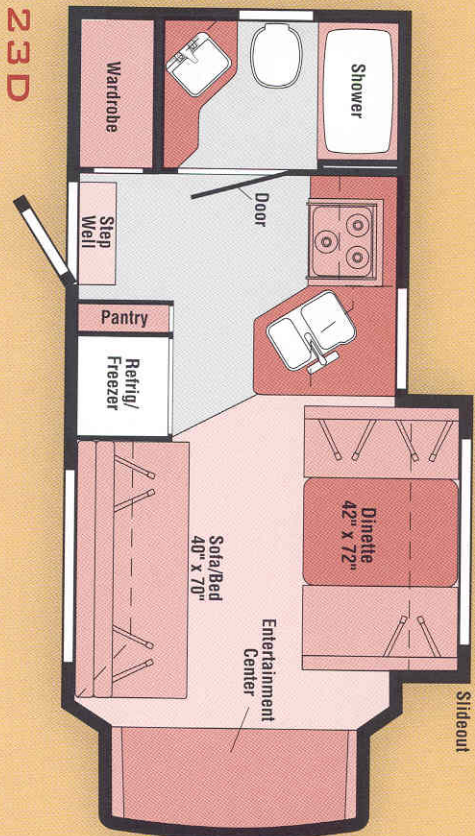
**STORAGE** Cambria features spacious exterior storage for easy access to all your gear.



# 06 FLOORPLANS



Note: Dimensions shown are for sleeping space only and may vary due to styling differences. Dashed lines denote overhead storage areas.



Available December 2005



## STANDARD GRAPHICS AND WHEEL LINERS



Light Almond  
Metallic



Sedona Bronze  
Metallic



## DELUXE GRAPHICS AND STYLIZED ALUMINUM WHEELS



Bronzed Gray



Dark Plum



**WINNEBAGOIND.COM** Visit us on the web for more info on all of our motor homes, latest product updates and a host of web-exclusive content.

## INTERIOR DECOR

Choose from three fabric selections and two wood choices.

SOFA

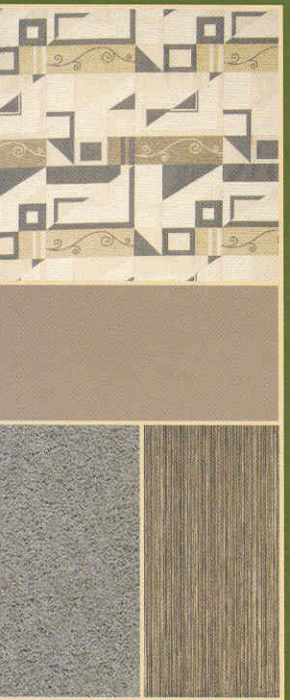
LEATHER

BEDSPREAD

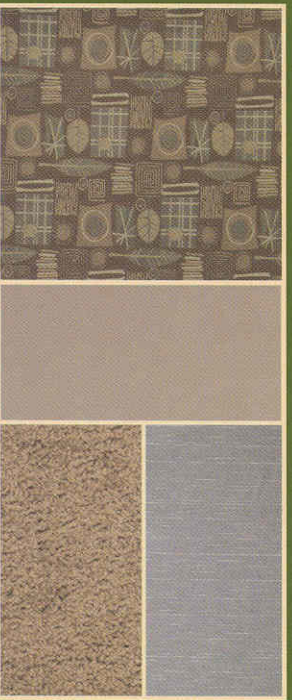
CARPET



Mango Twist w/available Buff Ultraleather HP™



Night Mist w/available Papyrus Ultraleather HP™



Espresso w/available Papyrus Ultraleather HP™



Washed Maple



Sierra Maple



06 SPECIFICATIONS

WEIGHTS & MEASURES		23D	26A	29H NEW
Length		23'10"	26'9"	29'11"
Exterior Height		10'5"	10'0"	10'0"
Exterior Width		7'11.2"	7'11.2"	7'11.2"
Exterior Storage <sup>2</sup> (cu. ft.)		19.2	43.0	26.3
Interior Height		6'5"	6'5"	6'5"
Interior Width		7'8"	7'8"	7'8"
Freshwater Capacity w/Heater <sup>3</sup> (gal.)		33	43	42
Holding Tank Capacity <sup>3</sup> - Black/Gray (gal.)		23/30	32/37	37/32
LP Capacity <sup>3</sup> (gal.)		18	18	18
Fuel Capacity (gal.)		55	55	55
GVWR <sup>4</sup> (lbs.)		18,500 <sup>2</sup> /20,000 <sup>2</sup>	20,000 <sup>2</sup>	20,000 <sup>2</sup>
GVWR (lbs.)		11,500 <sup>2</sup> /14,050 <sup>2</sup>	14,050 <sup>2</sup>	14,050 <sup>2</sup>
GAWR - Front (lbs.)		4,600 <sup>2</sup> /4,600 <sup>2</sup>	4,600 <sup>2</sup>	4,600 <sup>2</sup>
GAWR - Rear (lbs.)		7,800 <sup>2</sup> /9,450 <sup>2</sup>	9,450 <sup>2</sup>	9,450 <sup>2</sup>
Wheelbase		158"	182"	220"

■ = Chassis A    ● = Chassis B

AUTOMOTIVE/CHASSIS		23D	26A	H62
Chassis A <sup>1</sup> - Ford <sup>®</sup> E350 6.8L Super-Duty V10 SOHC Triton <sup>®</sup> engine, 305-hp, automatic transmission, TorqShift <sup>™</sup> 5-speed w/over/haul feature, 4-wheel ABS, 130-amp, alternator, dual air bags (NA w/Deluxe Graphics)		S		
Chassis B <sup>1</sup> - Ford F450 6.8L Super-Duty V10 SOHC Triton engine, 305-hp, automatic transmission, TorqShift <sup>™</sup> 5-speed w/over/haul feature, 4-wheel ABS, 130-amp, alternator, dual air bags		0	S	S
The spare, <b>Tire Tool</b> wrench, <b>Trailer Hitch</b> <sup>2</sup> 5,000-lbs. drawbar/350 lbs. maximum vertical torque weight & wiring, 7-pin connector, <b>Wheels</b> Liners stainless steel		S	S	S
<b>Air Springs</b> aux. rear, <b>Wheels</b> stylized aluminum		0	0	0

CAB AREA & DRIVER CONVENIENCES		23D	26A	H62
<b>Trimline<sup>™</sup></b> Beverage Holder, Cab Seats (fabric), armrest, fixed lumbar support, multilevel slide/recline, Cigarette Lighter/12-volt DC Powerpoint, Cruise Control, Curtain cab divider, Floor Mats rubber, driver & passenger, Power Door Locks w/remote control, driver/passenger/main entry, Power Cab Windows, Steering Wheel tilt w/power-assist, Sunvisors, Trim Panels driver & passenger doors (chassis-supplied) w/nap pocket (Ford)		S	S	S
Cab Seats (Ultral leather HP <sup>™</sup> ), Instrument Panel applique, Monitor System (review w/single camera, LCD monitor, Audiovox <sup>®</sup> )		0	0	0

ENTERTAINMENT		23D	26A	H62
RV Radio <sup>1</sup> (cab) AM/FM/Stereo/CD player w/weather band, speakers (4), remotes (one handheld, one mounted to steering wheel), Sirius <sup>®</sup> Satellite ready, Radio Power Switch main/aux., battery, Satellite System Ready, TV 24" flat-face, color AC stereo w/remote, Sony <sup>®</sup> TV Enhancement Package 12-volt DC powerpoint, interior jack, coax wiring, cable input		0	0	0
DVD w/remote, 12-volt, Entertainment Center (exterior) AM/FM stereo w/CD player & remote, DC receptacle, AC duplex receptacle, TV jack, radio antenna, speakers (2), lockable compartment, removable TV table, Radios (4) 2-way, docking port w/charger, Satellite Radio Sirius, includes six-month paid subscription (NA in Canada), Satellite Dish Antenna RV digital, manual, elevation sensing unit, Satellite System RV digital, in-motion, elevation sensing unit, King-Dome <sup>®</sup> Deluxe Sound System w/5-channel QSURound <sup>™</sup> sound, amplifier, speaker system		0		0
TV 15" LCD stereo w/remote, 12-volt, bedroom				0

INTERIOR		23D	26A	H62
Ceiling fabric, Clock recessed, Cupholders <sup>1</sup> (NA 26A), Lights decorative overhead, dinette, Lights ceiling, incandescent w/wall switches, 12-volt DC Powerpoint, Shades day/night pleated (lounge, dinette, & bedroom), Mini Blinds (gallery & bath), Roof Vent nonpowered, lounge		S	S	S

INTERIOR		23D	26A	H62
Roof Vent powered ventilator fan, lounge, Windows dual-glazed/thermo-insulated		0	0	0
Lamps decorative wall (2) (dining 26A, bedroom 29H)		S	S	S
Lights halogen, Light swivel				S
CABINETRY		23D	26A	H62
Sierra Maple or Washed Maple stile-and-rail construction w/raised-panel inserts on upper doors		0	0	0

COUNTERTOPS		23D	26A	H62
Laminate w/T-mold edge		S	S	S

FLOORCOVERING		23D	26A	H62
Carpeting w/pad, Vinyl gallery, bath, & stepwell area		S	S	S

FURNITURE		23D	26A	H62
Dinette w/access to storage below, Sofa w/throw pillow		S		S
Chair (lounge, hoop-base (swivel/glider) (must be secure when traveling), Dinette U-shaped w/access to storage below, slideout baskets		S	S	S
Ultral leather HP Furniture Package cab seats, dinette sofa (NA 26A), lounge chair (26A only)		0	0	0

GALLEY		23D	26A	H62
Faucet single-control, Moen <sup>®</sup> Microwave/Convection Oven Sharp <sup>®</sup> Range Top 3-burner, drawer below, Range Hood vented w/light & fan, Receptacle duplex, Refrigerator/Freezer large double-door, two-way, Norcold <sup>®</sup> Sink double-bowl, molded w/sink cover, Wall Border		S	S	S
Countertop flip-up extension		S	S	S
Pantry		0	0	0
Range 3-burner w/oven, Magic Chef <sup>®</sup> Water Filtration System		0	0	0

BATH		23D	26A	H62
Cabinet (lavatory, Cabinet(s) medicine, Faucet (shower) dual-control w/flexible showerhead, Light shower, Roof Vent powered Shower wall surround w/removable clothes rod, Shower Door folding, Sink, Skylight, Toilet w/foot-pedal flush & spray		S	S	S
Faucet (lavatory) single-control			S	S
Faucet (lavatory) dual-control		S	S	S
Magazine Rack				S
Mirror				S

BEDROOM		23D	26A	H62
Bed double, bedspread, pillows, pillow shams, throw pillow, Shirt Cabinet			S	
Bed queen, split mattress, headboard, Chest of Drawers, Lights decorative wall		S		S
Wardrobe clothes rod		S		S

EXTERIOR		23D	26A	H62
Awning Rails w/rain gutters, Door entrance w/separate screen door, deadbolt lock, remote keyless entry, Entrance Door Step single, manual, Exterior Graphics Package Light Almond Metallic or Sedona Bronze Metallic, Ladder, Light porch w/interior switch, Mirrors plate-mounted, manual adjust w/convex, Mudflaps rear, Receptacle AC duplex, Running Boards fiberglass w/front mud guard, Sidewall Skin one-piece smooth fiberglass, Storage Compartments w/trunk liner		0	0	0
Awning patio, metal wrap, Entrance Door Steps single, electric w/doorjamb switch, Deluxe Graphics Package (NA w/Chassis A) Bronze Gray or Dark Plum w/full-body painted silver cab, running boards w/wheel lips w/protective film, below entry door, 23D requires 14,050 GVWR chassis), Mirrors plate-mounted, electric/remote w/detruster				

SYSTEMS		23D	26A	H62
Automotive Heater/A/C, A/C (roof) 13,500 BTU, ceiling-ducted w/wall thermostat, Aux. Start Circuit, Battery (coach) Group 24 deep-cycle, Battery (coach) disconnect system, Battery Charge Control automatic dual, Drain water tank, 1" brass ball valve w/lever, Electrical Distribution System A/C breaker panels, DC automotive fuses, 45-amp, converter/charger, Generator Prep Kit, Monitor Panel battery condition gauge, generator hourmeter gauge, generator start/stop switch, holding tank levels, LP tank level, water heater lights, water heater switch, water pump switch, water tank level, Power Cord 30-amp, 25', Service Center (drainage/water) pressurized city water hookup/tank diverter fill, drainage valves, 10' sewer hose, Service Center (electrical) cable input, power cord, portable satellite dish hookup, Tank holding, heated compartment (26A & 29H), Tank LP permanent mount w/gauge, Fuel-eve <sup>™</sup> holding tank monitoring system, Water Heater 6-gallon electronic ignition, LP gas, Water System Winterization Package water heater bypass valve & siphon tube, Water Pump demand, permanent magnet motor w/diaphragm, Water Tank Fill gravity w/locking door A/C Heat Pump, Batteries (2) (coach) Group 24 deep-cycle, Exterior Wash Station w/lighted pump switch, Generator 4,000-watt Onan <sup>®</sup> MicroQuattro <sup>™</sup> gas, Inverter DC/A/C, 300-watt		0	0	0
Drainage System heated, electric		0		
Furnace 25,000 BTU, low-profile		S		
Furnace 30,000 BTU, low-profile		S		S

SLIDEOUT		23D	26A	H62
Slideout room dinette w/slide/room cover		S	S	S
Slideout room rear bed/sofa conversion w/slide/room cover				S

SAFETY		23D	26A	H62
Airbags driver & passenger, Assist Bar interior, Assist Handle exterior, soft-touch, Bumpers front & rear, Child Seat Tether Anchor, Detectors/Alarms LP leak, smoke carbon monoxide, Fire Extinguisher 10 BC, Ground Fault Interrupter, Lights high-mount brake/lamps, Seat Belts cab, 3-point adj., Seat Belts lap (in selected areas), Window escape		S	S	S

WARRANTY <sup>2</sup>		23D	26A	H62
12-month/15,000-mile basic warranty, 36-month/56,000-mile warranty on structure, 10-year limited parts & labor warranty on roof skin <sup>3</sup>		S	S	S

- The height of each model is measured to the top of the tallest standard feature and is based on the curb weight of a typically equipped unit. The actual height of your vehicle may vary by several inches depending on chassis or equipment variations. Please contact your dealer for further information.
  - The load capacity of your motor home is designated by weight, not by volume, so you cannot necessarily use all available space when loading your motor home.
  - Capacities are based on measurements prior to tank installation. Slight capacity variations can result due to installation applications.
  - Capacities shown are tank manufacturer's listed water capacity (WC), Actual filled LP capacity is 80% of listing due to overfilling prevention device on tank.
  - Actual towing capacity is dependent on your particular loading and towing circumstances which includes the GVWR, GAWR, and GCWR as well as adequate trailer brakes. Please refer to the Operator's Manual of your vehicle for further towing information.
  - The chassis interior cab color is expected to change during 2006 model year. Please see your dealer for the latest specifications.
  - See separate chassis warranty details provided in Owner's Manual.
  - See your dealer for complete warranty information.
  - Standard
  - Optional
- Not all items available in combination. See dealer for details.
- Winnebago Industries<sup>®</sup> continuing program of product improvement makes specifications, equipment, model availability, and prices subject to change without notice. Comparisons to other motor homes are based on the most recent information available.





## Built by Winnebago Industries. Built to last.

Itasca motor homes are built by Winnebago Industries, the company that defined motor homes. The company that built its reputation on quality construction. The company that transformed the motor home concept into a way of life.

Today, Winnebago Industries brings that reputation for quality and its 47-year history of motor home innovation to the design and construction of every motor home. It's all a part of SuperStructure,® our exclusive system of proprietary structural components that instills each motor home with improved strength and durability.

**SOLID FOUNDATION** Steel and aluminum truss work provides a solid, flat foundation for floors and sidewalls. Winnebago Industries engineers also take special care to distribute the weight of components to ensure proper handling and stability.



**INTERLOCKING JOINTS**  
The floors, sidewalls and roof are all integrally connected using interlocking joints. This creates a coach body that acts as a cohesive unit for improved strength and durability.



**E-COATING** Winnebago Industries employs an exclusive 12-stage automotive-style dip tank process to apply an advanced electrodeposition coating on critical steel components for unmatched corrosion protection.

**THERMO-PANEL® SIDEWALLS** Invented by Winnebago Industries, Thermo-Panel construction combines a fiberglass panel, high-density, block-foam insulation and aluminum support structures to create some of the most durable, lightweight sidewalls in the industry.

**FIBERGLASS ROOF** Every Itasca motor home features a one-piece fiberglass roof backed by a 10-year limited parts-and-labor roof skin warranty.

**ATTENTION TO DETAIL** Whether it's sending every coach through a high-pressure water tunnel to check for leaks or labeling each individual wire and barcoding parts to save time and frustration during service, Winnebago Industries considers every detail to ensure your Itasca motor home provides you with years of pleasure.

**STRONG AS STEEL** Appliances are secured directly to embedded steel plates for added safety.



1-year-old Itasca fiberglass roof



1-year-old competitor's rubber roof

**BUILT TO A HIGHER STANDARD** The Cambria features a crowned, one-piece fiberglass roof, backed with a 10-year limited parts-and-labor roof skin warranty.

Fiberglass offers superior strength, attractiveness and durability over the rubber roofs found on many competitive models which can chalk, streak and degrade over time.

Fiberglass also provides increased puncture and tear resistance.



**TAKE A TOUR** We're proud of our process, state-of-the-art facilities and the people who make Winnebago Industries number one. We invite you to visit our factory in Forest City, Iowa, for a first-hand look at the dedication and technology behind every motor home we build.



**RECOGNIZED QUALITY** The Recreation Vehicle Dealer Association annually rates RV manufacturers and awards the Quality Circle award to manufacturers who provide exceptional products, service and support. Winnebago Industries is proud to be the only manufacturer to receive this award every year since its inception.



**COMMITTED TO SERVICE** We back our motor homes with the industry's best service after the sale.

- 12-month/15,000-mile basic limited warranty
- 36-month/36,000-mile warranty on structure
- Standard 10-year limited parts-and-labor roof skin warranty
- Complimentary 24-hour roadside assistance program
- TripSaver Fast Track Parts. TripSaver guarantees that in-stock warranty parts ship directly to your dealer within 24 hours.
- National dealer service network



**WIT CLUB** Itasca owners are like family. Joining the Winnebago-Itasca Travelers is a great way to meet and travel with other Itasca enthusiasts. Members enjoy:

- Caravans and rallies
- Local and state group activities
- RV travel benefits



Built proudly by



For Sales and Service Information Contact:

NYSE listing: WGO

©2005 Winnebago Industries, Inc.

Printed in USA

Seat belts are your most important hookup. Always buckle up.