

2006 WINNEBAGO OUTLOOK™



A New Favorite From the Class C Leader.



THE NAME ISN'T THE ONLY THING THAT'S NEW.

Couple an impressive list of innovative features with Winnebago quality craftsmanship and what do you get? The all-new Winnebago Outlook.



31C - Meadow Green with Sierra Maple

THERE'S SOMETHING FOR EVERYONE IN THE ALL-NEW OUTLOOK.

Step inside and you'll recognize Winnebago quality innovations throughout the 2006 Outlook. From the RV Radio® and Stitchcraft furniture to the SmartSpace™ design philosophy that makes the most of available space, the Outlook is filled with user-friendly features. Including wall-mounted light switches and day/night pleated shades to help you manage the amount of light in the lounge, dinette and bedroom. Choose Portsmouth Oak or Sierra Maple cabinets to go with any of the 10 available floorplans. Or choose the optional Deluxe Package upgrade (shown here); new for 2006, this package gives you stylized aluminum wheels,

decorative glass doors in the living area, a raised-wood-panel refrigerator insert, upgraded lighting, a built-in knife holder in the galley, and more...

The bedroom on the 29B features a queen-sized bed that has plenty of underbed storage. There's also additional storage in the deep, overhead cabinets and spacious wardrobe. The vanity area, complete with tip-up mirror, doubles as a convenient place to write letters or surf the Net with a laptop computer. Regardless of what you're looking for in a Class C motor home, the 2006 Outlook is sure to offer something that will fit you just right.



29B - Gingersnap with Portsmouth Oak

JUST WHAT YOU'VE BEEN LOOKING FOR.

An available feature-filled entertainment center and user-friendly galley await inside the Outlook.

COOK UP A STORM.

Cooking is a snap with the three-burner Magic Chef® range/oven and built-in microwave with lighted range hood. Or choose the available microwave/convection oven and three-burner range top with storage drawer. The double sink is sized to accommodate plates and pans and includes a sink cover for more work space. Several models also offer a flip-up countertop extension for additional counter space. A large pantry gives you plenty of room for food storage (not available on 24V and 31C). Full-extension drawer slides make for easy access to all your stored items. For cold, filtered drinking water anytime, choose the available water filtration system.



25F



31C - with
Deluxe Package

DESIGNED FOR YOUR COMFORT.

You control the climate with thermostat-controlled, ceiling-ducted air conditioning and an available roof air-heat pump that keeps you warm on chilly mornings without using the furnace. And with amenities such as plush Stitchcraft furniture; stylish and functional cabinets; and easy-to-clean, no-wax vinyl floors, you can enjoy the comforts of home anywhere. For greater seating flexibility while traveling, every Outlook comes with multiple seat belts and a child-seat tether in the forward-facing dinette seat. The dinette also converts into a comfortable bed. The standard front bunk area gives you even more sleeping capacity.

For your viewing pleasure, choose the available front entertainment center, complete with 24" TV and Video Selection System. An optional Home Theater Sound System upgrade adds a DVD/VCR combo, receiver, amplifier, five recessed speakers and subwoofer for incredible audio. Watch TV when shoreline or generator power is not available by choosing the optional 300-watt inverter. (Entertainment options listed above are not available on 22E or 22R.)



29B

MORE INNOVATIONS. MORE ENJOYMENT.

From our exclusive Trimline™ center console that provides more legroom to the large buttons on the RV Radio, great care goes into making your experience in our motor homes more enjoyable.



Interior chassis cab color selection may change at chassis manufacturer's discretion. Please see your dealer for latest specifications.



Inset: Optional Chevrolet chassis available mid-model year.



ONE DRIVER-FRIENDLY DASH.

Once behind the wheel, sit down and enjoy the high-back, fixed lumbar support of custom cab seating with a multi-adjustable recline mechanism — choose the available leather upholstery for added luxury. For a touch of class, the cockpit pictured above features the available dash appliqué. Controls, switches and gauges in the Outlook are all sized and positioned for easy operation, including power window and door locks. The available LCD rearview monitor can be used for easy maneuvering when backing up.

Move from cab to living area with ease, thanks to our exclusive, less bulky Trimline center console* — a Winnebago Industries exclusive.



HIGH-TECH CONVENIENCE.

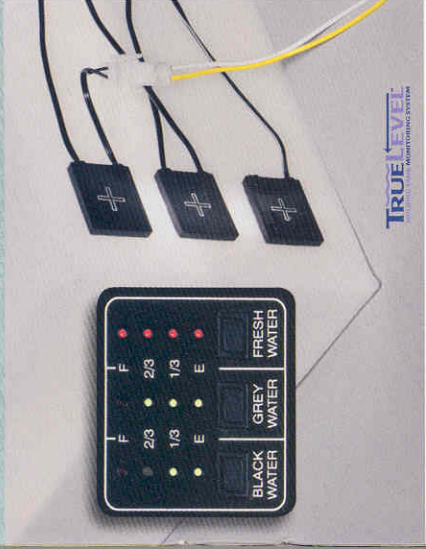
Enjoy the convenience of standard keyless entry remotes that lock and unlock driver, passenger and entry doors. The RV Radio features an AM/FM stereo with CD player, a built-in weather band for weather updates at the push of a button and two remotes — one attached to the steering wheel and one handheld for use while parked. Upgrade your RV Radio with the available Sirius® Satellite radio package. Sirius brings you 120 channels of crystal clear programming, and a six-month subscription is complimentary with this package. (Available with Ford chassis only. Sirius upgrade not available in Canada.)

Great reception isn't limited to time spent behind the wheel. By choosing the portable two-way radios, you can stay connected with others in your group. The four handsets have up to a five-mile range and recharge from the coach's house batteries at their built-in charging station.

*Ford Chassis only.

Inside and out, the Outlook is filled with thoughtful touches to enhance your life on the road.

HIGH TECH CONVENIENCE.



IT'S NOT JUST LITTLE THINGS THAT SET THE OUTLOOK APART.

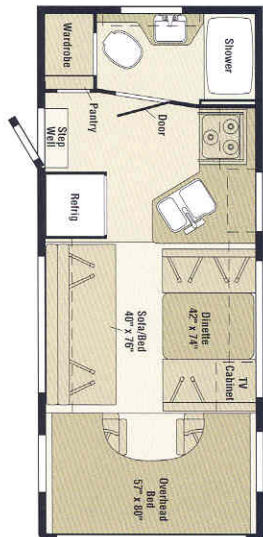
Our exclusive TrueLevel™ holding tank monitoring system uses Mirus* detector cells to determine liquid levels from outside the tank, putting an end to inaccurate tank-level readings. The convenient exterior wash station with lighted pump switch helps keep dirt and grime where it belongs — outside. Our StoreMore® remains the industry's premier slideout system and features large storage compartments that extend with the slideroom so you do not have to crawl under the slideout to load and unload your belongings (featured on 31C and 32G). Tow up to 5,000 pounds of fun using the standard hitch, with seven-pin connector. Even entering the Outlook is more comfortable with our new soft-touch handle. The available exterior entertainment center features an AM/FM stereo, remote-control CD player, 12-volt DC receptacle, TV jack, 110-volt outlet, speakers and a removable table. It also locks to keep things safe. Innovative rear storage compartments (25F and 26A) feature wire shelving and hooks to help keep items organized and easy to access. The 25F even features a removable wastebasket that can be accessed from the galley.

*Mirus is a trademark of Material Sciences Corporation.

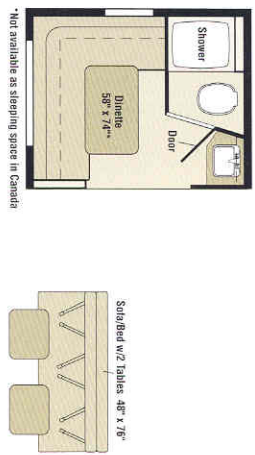
22E



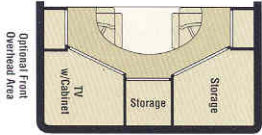
22R



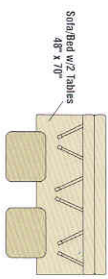
24V



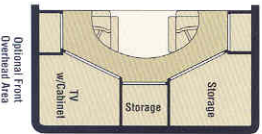
*Not available as sleeping space in Canada



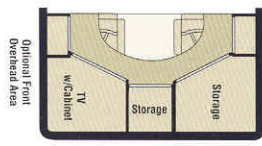
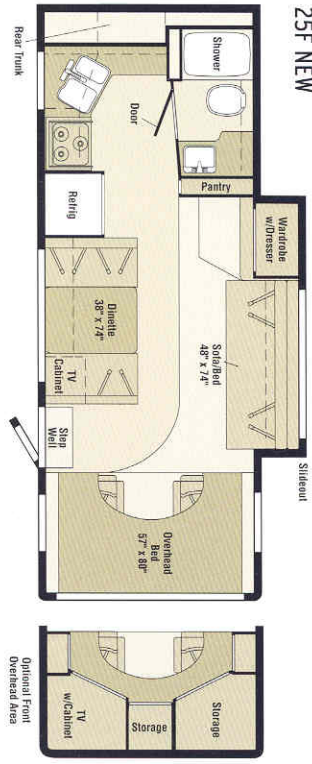
26A



Silhouette



25F NEW



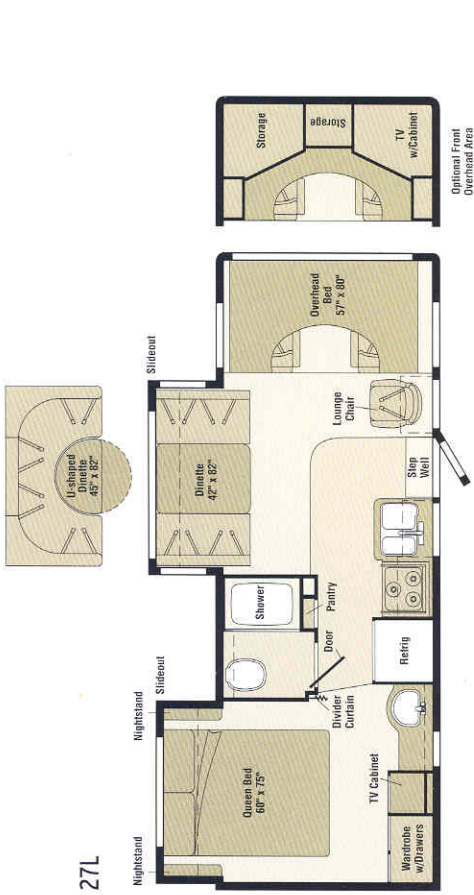
Vinyl Flooring

Seat Belts

Note: Dimensions shown are for sleeping space only and may vary due to styling differences.

EVERY DETAIL IS ACCOUNTED FOR.

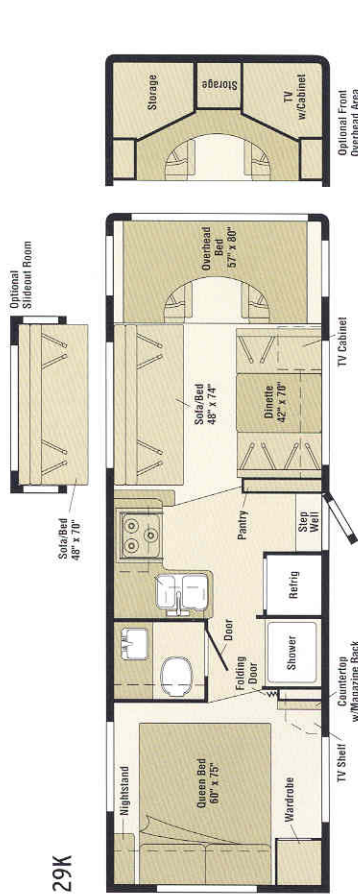
27L



29B



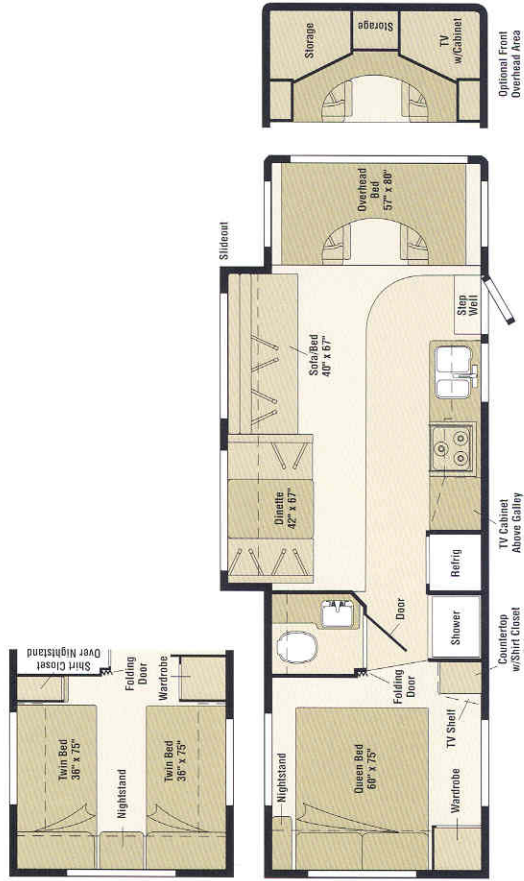
29K



32G

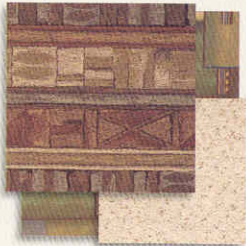


31C

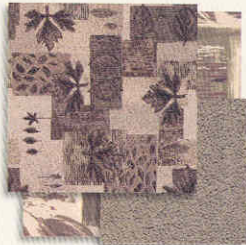


BUILT TO LAST.

INTERIORS/EXTERIORS



Gingersnap



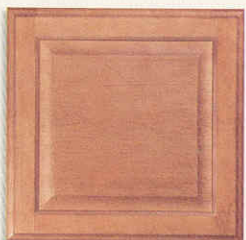
Meadow Green



Stonedust



Portsmouth Oak



Sierra Maple

We believe the same high standards we apply to construction should apply to interior design. That's why we create efficient floorplans based on customer input, why we look for durable fabrics in pleasing colors, and why we handcraft our own cabinets using traditional panel-and-trail construction.

GET A LIFETIME OF GOOD FIRST IMPRESSIONS.

Better construction leads to a better motor home. Our one-piece fiberglass sidewall makes the Outlook incredibly resilient to the elements.

Choose the available Deluxe Graphics Package for an even more upscale look. It includes fiberglass running boards and lower valance paint.

Stainless steel wheelcovers come standard, or upgrade your wheel package with the available stainless steel wheel liners.

Deluxe Graphics



Steel Blue Metallic



Standard Graphics



Light Charcoal Metallic



Sandstone Beige Metallic



2006 OUTLOOK SPECIFICATIONS

Standard - S	Optional - O	22E	22R	24V	25F	26A	27L	29B	29K	31C	32G
Light(s) decorative wall lamp(s)											
Nightstand(s) w/drawer(s)											
Roof Vent nonpowered											
Shirt Closet											
TV Shelf 13" (TV not included)											
Vanity Cabinet w/flip-up countertop, stool w/removable seat cushion for storage inside											
Wardrobe Cabinet(s) drawers											
EXTERIOR											
Awning Rails w/rain gutters, Door entrance w/separate screen door, deadbolt lock, keyless entry w/remote, Entrance Door Step(s) manual, Exterior Graphics Package (w/protective film below entry door), Ladder , Light porch w/interior switch, Mudflaps rear, Receptacle AC duplex, Running Boards aluminum, Sidewall Skin one-piece smooth fiberglass, Storage Compartment w/trunk liner, KeyOne™ System (NA rear storage compartments 25F, 26A)											
Awning patio , vinyl											
Deluxe Graphics Packages w/fiberglass running boards, Steel Blue Metallic or Sandstone Beige Metallic (w/protective film below entry door)											
Entrance Door Step(s) electric w/doorjamb switch											
Trunk rear, backwall, AC duplex receptacle, DC receptacle, shelves, storage baskets (25F only), storage hooks, TV antenna jacks, plastic tub w/drain hole											
SYSTEMS											
Auxiliary Start Circuit , Battery (coach) Group 24 deep-cycle, Battery (coach) disconnect system, Battery Charge Control automatic dual, Drain 1" water tank, Dump Valve manual, Electrical Distribution System DC fuses, AC breakers, 45-amp. electronic converter/charger, Generator Prep Kit , Monitor Panel wall-mounted, battery condition gauge, generator hourmeter gauge, generator start/stop switch, holding tank levels, LP tank level, water heater light(s), water heater switch, water pump switch, water tank level, Power Cord 30-amp., 25' Sewer Hose 10' stores in drain valve compartment, Tank LP permanent mount w/gauge, TrueLevel holding tank monitoring system, Water Heater 6-gallon, electronic ignition, LP gas, Water Hookup city, Water Pump demand, Water System Winterization Package water heater bypass valve & siphon tube, Water Tank Fill w/locking door											

Standard - S	Optional - O	22E	22R	24V	25F	26A	27L	29B	29K	31C	32G
Air Conditioner (roof) 13,500 BTU, ceiling-ducted w/wall thermostat											
Air Conditioner (roof) 14,800 BTU, ceiling-ducted w/wall thermostat											
Batteries (coach) (2) Group 24 deep-cycle											
Drainage System ^b heated, electric, one heat pad per tank, pipe wraps & lighted on/off switch next to monitor panel											
Furnace 25,000 BTU, low-profile											
Furnace 30,000 BTU, low-profile											
Generator 4,000-watt; Onan® MicroQuiet™ gas											
Heat Pump w/roof A/C											
Inverter DC/AC, 300-watt											
Wash Station exterior w/lighted pump switch											
SLIDEOUTS											
Slideout Room front sofa/wardrobe w/slideroom cover											
Slideout Room front sofa w/slideroom cover											
Slideout Room rear bed w/slideroom cover											
Slideout Room dinette w/slideroom cover											
Slideout Room sofa/frange w/slideroom cover StoreMore											
Slideout Room sofa/dining w/slideroom cover StoreMore											
SAFETY											
Airbags driver & passenger, Assist Handle exterior, Assist Bar interior entrance, BrakeLamp high-mount, Bumpers front & rear, Child Seat Tether Anchor dinette, Detectors/Alarms LP leak, smoke, carbon monoxide, Fire Extinguisher 10 BC, Ground Fault Interrupter , Light(s) courtesy w/wall switch(es), Seat Belts cab, 3-point, Seat Belts lap (in selected areas)											
Window escape											
WARRANTYⁱ											
12-month/15,000-mile basic limited warranty^j, 36-month/36,000-mile warranty on structure^k, 10-year limited parts & labor warranty on roof skin^l											

a. The height of each model is measured to the top of the tallest standard feature and is based on the curb weight of a typically equipped unit. The actual height of your vehicle may vary by several inches depending on chassis or equipment variations. Please contact your dealer for further information.

b. Outlook floorplans feature a wide-body design — over 96" in making your purchase decision, you should be aware that some states restrict access on some or all state roads to 96" in body width. Before making your purchase decision, you should confirm the road usage laws in the states of interest to you.

c. The load capacity of your motor home is designated by weight, not by volume, so you cannot necessarily use all available space when loading your motor home. Capacities are based on measurements prior to tank installation. Slight capacity variations can result due to installation applications.

d. Capacities shown are tank manufacturer's listed water capacity (W.C.). Actual filled LP capacity is 80% of listing due to overfilling prevention device on tank.

e. Comparisons to other motor homes are based on the most recent information available.

brakes. Please refer to the Operator's Manual of your vehicle for further towing information.

g. Interior chassis cab color selection may change at chassis manufacturer's discretion. Please see your dealer for latest specifications.

h. Not available in Canada.

i. See separate chassis warranty details provided in Owner's Manual.

j. See your dealer for complete warranty information.

k. Not all items available in combination. See dealer for details.

l. Winnebago Industries' continuing program of product improvement makes specifications, equipment, model availability, and prices subject to change without notice. Comparisons to other motor homes are based on the most recent information available.

NOT ALL MOTOR HOMES ARE CREATED EQUAL. As you take a closer look, you'll see that there is much more to the Winnebago Outlook than a long list of standard features and compelling floorplans. Beneath it all you'll find a SuperStructure® foundation of strength and durability, and Winnebago Industries' recognized service and warranty support.



We are committed to service. We back our motor homes with the best after-the-sale service in the industry. This includes a 12-month/15,000-mile basic limited warranty; 36-month/36,000-mile warranty on structure; standard 10-year limited parts-and-labor roof skin warranty; and complimentary 24-hour Roadside Assistance Program. TripSaver Fast Track Parts guarantees that in-stock warranty parts ship directly to your dealer within 24 hours. Winnebago Industries has a nationwide dealer service network.

Certified quality. Recreation Vehicle Dealer Association members annually rate RV manufacturers on the quality of their products, and on their sales and service support. Winnebago Industries has achieved the coveted Quality Circle Award every year since its inception, the only RV manufacturer to do so.

Warning: Joining WIT has been known to cause excessive fun. Winnebago-Iasca Travelers (WIT) is a club for owners of Winnebago Industries motor homes. WIT is a great way to meet people and offers you caravans and rallies, local and state group activities, and other benefits for RVers.

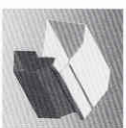


Seat belts are your most important hookup. Always buckle up.

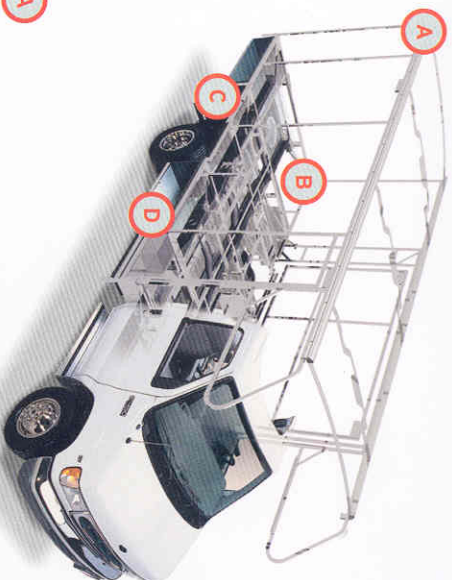
NYSE listing: WGO

Visit www.winnebagoind.com for virtual product tours and the latest product updates.

©2005 Winnebago Industries Inc., Forest City, IA 50436. Printed in USA.



A



SUPERSTRUCTURE is the term given to Winnebago Industries' structural motor home design and construction. Rather than a single component, it is the culmination of design integration that incorporates steel and aluminum substructures; welded tubular steel floor risers; interlocking joint technology; and Thermo-Panel® floor, roof and sidewalls to form a high-strength, durable vehicle body.

Thermo-Panel manufacturing combines a durable exterior panel with welded aluminum support substructures. The substructures are embedded in a high-density, block-foam insulation core to create a strong, durable, yet lightweight sidewall. Just another Winnebago Industries invention.

- A** Interlocking joint construction utilizes advanced extruded aluminum structural components to create integrated floor-to-sidewall and sidewall-to-roof joints. This design effectively distributes the weight of the walls and roof, making a stronger and more durable body than competitor designs that rely on screws to carry the weight.
- B** The foundation substructure assembly is precision-aligned to maximize strength and cross-coach support as well as durability.
- C** Tubular steel risers feature a truss-design core for improved strength and provide a stable base for the floor structure and storage compartments.
- D** Critical steel components are treated using an advanced electrodeposition coating process that provides superior corrosion protection.



One-year-old Winnebago Industries' fiberglass roof



One-year-old competitor's rubber roof

BUILT TO A HIGHER STANDARD.

The Outlook features a crowned, one-piece fiberglass roof skin backed with a 10-year limited parts-and-labor roof skin warranty. Fiberglass offers superior strength, attractiveness and durability compared to rubber roofs found on many competitive models. Over time, rubber roofs are susceptible to chalking, streaking and degradation, and have less puncture and tear resistance than fiberglass.