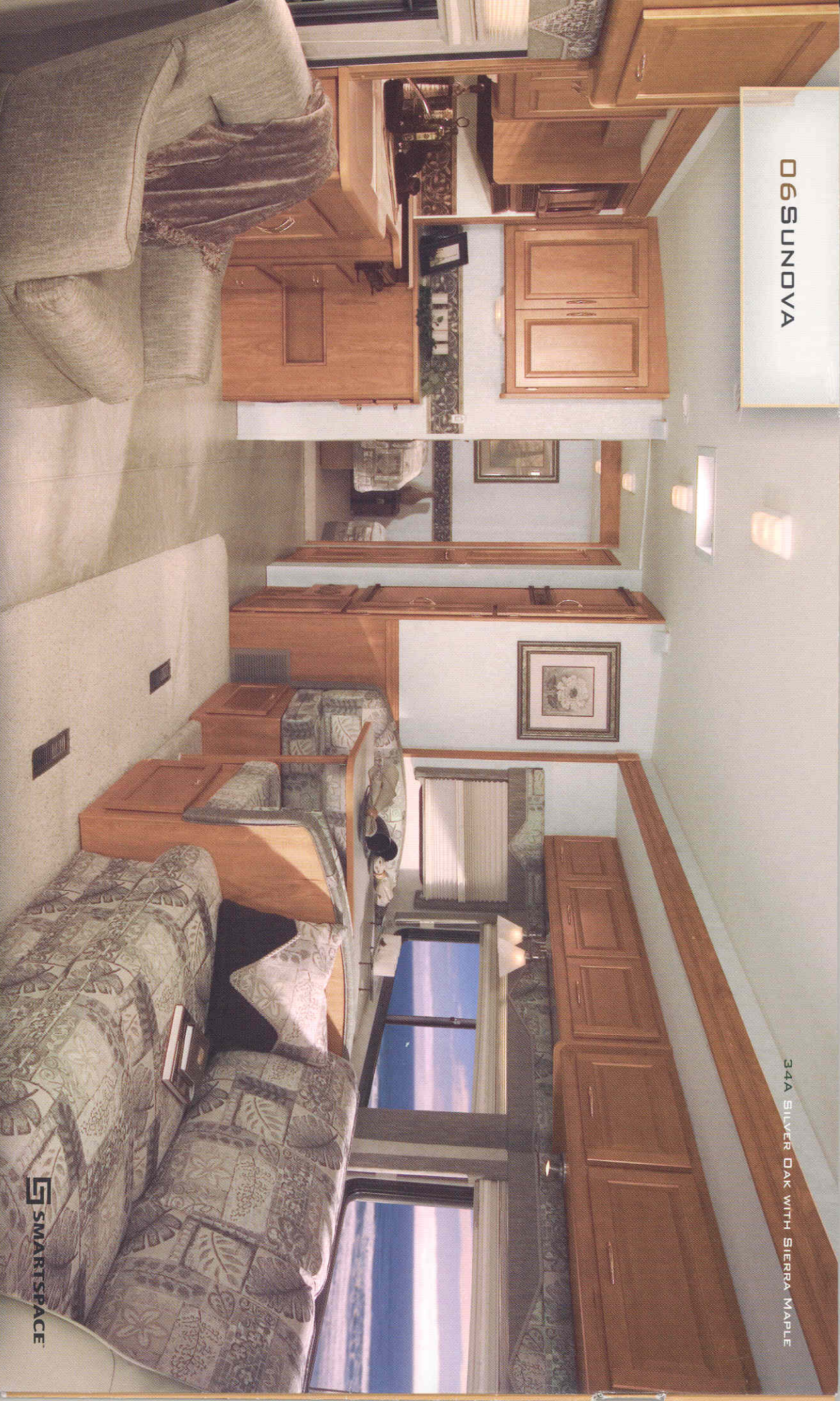


06SUNNOVA®



065UNNOVA

34A SILVER OAK WITH SIERRA MAPLE



THE CHOICE IS YOURS.

You'll be pleasantly surprised by the number of features and options available in the 2006 Itasca Sunova. Choose from six models, each loaded with amenities and SmartSpace™ design elements that makes the most of user-friendly features and available space. These can be as simple as adding extra seatbelts for travel flexibility or a more advanced process

of providing floor-ducted heat and ceiling-ducted air conditioning that are both controlled by a single wall thermostat. If you're serious about Class A comfort and styling, the abundance of features, available options and quality Winnebago Industries® construction make the Itasca Sunova the right choice.



CLASS A LIVING.

Love home-cooked meals? The galley includes a three-burner range/oven and a microwave oven for all your cooking needs. Take advantage of the additional space provided by the sink cover and a countertop extension (NA 34A). You'll also find plenty of food storage in the large refrigerator and cleverly designed pantry.

Watch the 24" TV from the comfort of the hoop-base lounge chair (NA 29R). When you're not traveling, this chair can be relocated to your favorite spot in the coach. For an upgraded entertainment experience, add the Home Theater Sound System, which includes a DVD/VCR combo, amplifier, receiver, five speakers and a subwoofer. Choose the 300-watt inverter and you'll be able to watch TV without generator or shoreline power.

Gain greater climate control by adding day/night pleated shades, dual-glazed, thermo-insulated windows and a heat pump that takes the chill off without starting the furnace.



LIVING AREA SmartSpace design led to a living room slideout that extends thirty inches on most models. This creates more room for quality 5Stitchcraft furniture, including a dinette with a child safety-seat tether anchor.



GALLEY The galley provides plenty of space. Choose the available galley upgrade which includes a knife holder, range cover, woodgrain refrigerator door facades, silverware tray and wire storage baskets under the dinette seats.



FULL-EXTENSION DRAWER SLIDES
Allow for easy access to all your stored items.



BEDROOM The bedroom offers a queen-size Serta® mattress, roomy overhead cabinets, a mirrored wardrobe and a bedroom slideout on the 26P, 29R, 34A and 35N.

RIDE AND RELAX.

The Sunova makes driving easy by placing switches, gauges and controls at your fingertips and providing an available rearview monitor to assist with backing. To make trips more pleasant, high-back driver and passenger seats offer lumbar support and adjustments that swivel, slide and recline to suit your style. Both are available in Ultraleather HP™.

The RV Radio® is Sirius® Satelllite ready and offers simple controls for the CD player, radio and weather band. Two remotes give you control anywhere in the coach. Upgrade to the Sirius Satellite* radio package, which includes a complimentary six-month subscription with 120 digital channels.

Once you've settled on a campsite, use the touchpad controls of the available Kwikee® hydraulic leveling system to quickly level the Sunova. The QuickPort® service connection hatch makes hookups refreshingly simple. You can even close the service compartment door while hooked up at the campground.

An included hitch lets you tow up to 5,000 pounds and comes with a seven-pin connector.

*Sirius Satellite radio not available in Canada.



DASH A steering wheel remote and a handheld remote provide convenient controls for the RV Radio while you drive or relax in the coach.



ONEPLACE™

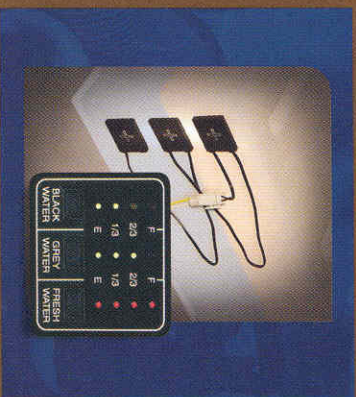
Frequently used gauges and controls are conveniently placed in a central location.

POWERLINE®

The PowerLine energy management system monitors 110-volt usage and automatically cycles appliances on and off during periods of high demand to prevent tripped breakers (33T, 34A, 35N only).



TWO-WAY RADIOS A set of four two-way radios is available in a built-in charging station.

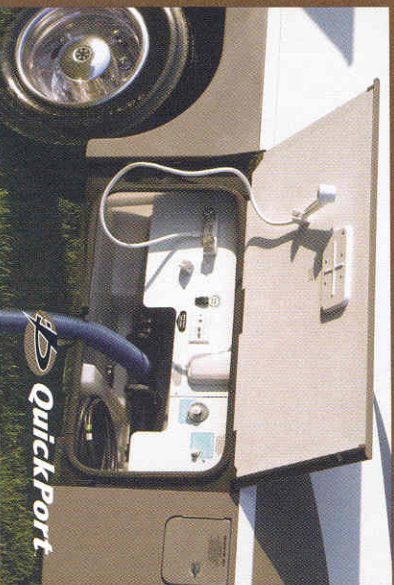


TRUELEVEL. To eliminate the guesswork, our exclusive Truelevel™ holding tank monitoring system incorporates Mirus™ * detector cells that detect liquid levels from outside the tank. No probes mean no more corrosion or clogging, just accurate readings time after time.

*Mirus is a trademark of Material Sciences Corporation.

EXTERIOR SERVICE

CENTER Connections and controls use color-coded labels for ease of use. The available wash station is great for quick cleanups, while heated holding tanks and a winterization valve let you extend the camping season.



SLIDE MORE This exclusive slideout system allows exterior compartments to extend with the slideroom for easy storage access. The large Storemore compartments accommodate bulky and oversized items.

06 FLOORPLANS

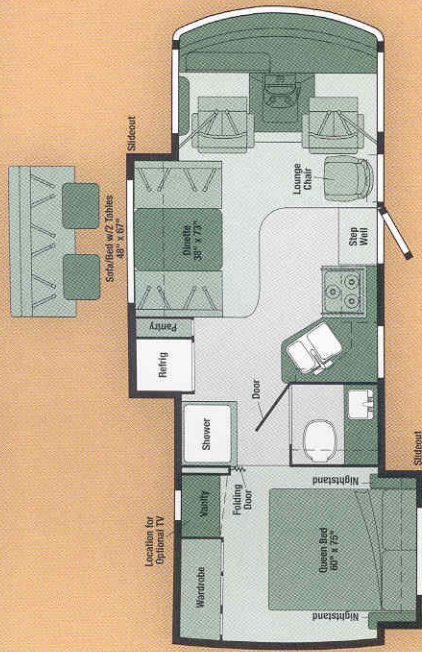
Vinyl Floorcovering



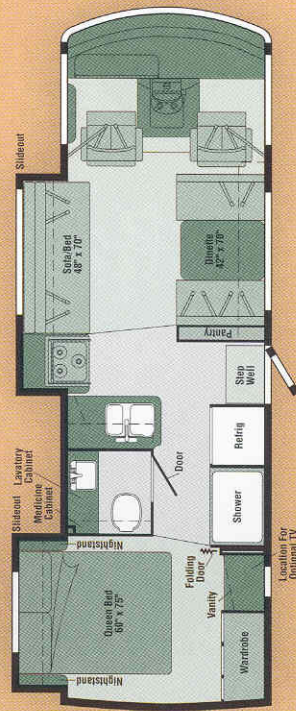
Seat Belts



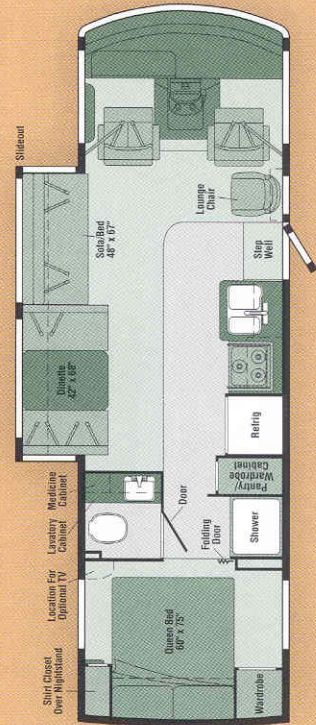
Note: Dimensions shown are for sleeping space only and may vary due to styling differences. Dashed lines denote overhead storage areas.



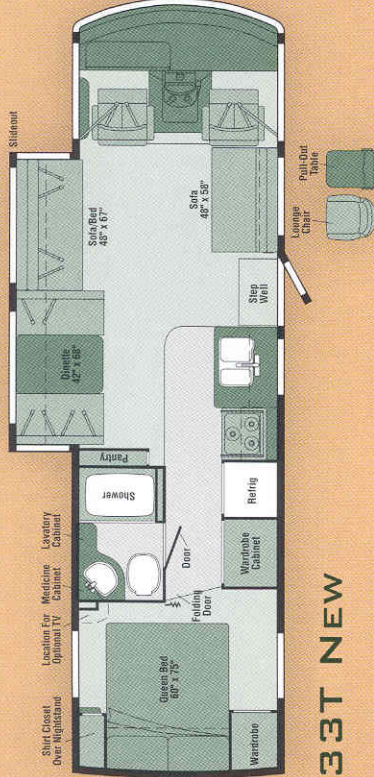
26P NEW



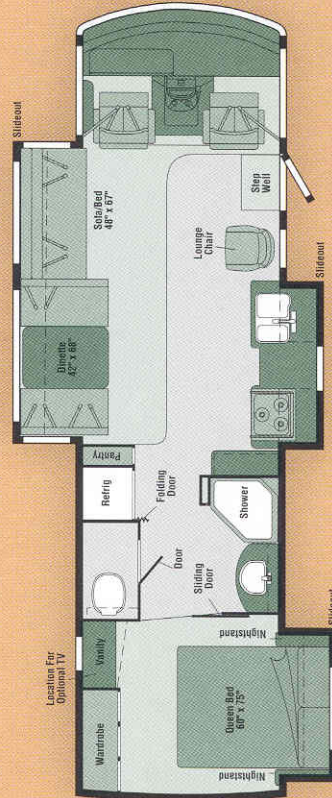
29R



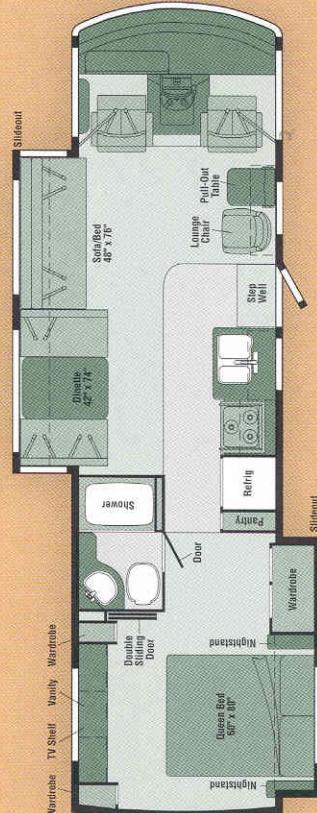
30B



33T NEW



34A



35N

06 SPECIFICATIONS

WEIGHTS & MEASURES	26P NEW					29R					30B					33T NEW					34A					35N																																																												
	Length	Exterior Height ¹	Exterior Width ²	Exterior Storage ³ (cu. ft.)	Awning Length	Interior Height	Interior Width	Freshwater Capacity w/Heater ⁴ (gal.)	Holding Tank Capacity ⁵ - Black/Gray (gal.)	LP Capacity ⁶ (gal.)	Fuel Capacity (gal.)	GCWR ⁷ (lbs.)	GVMR (lbs.)	GAWR - Front (lbs.)	GAWR - Rear (lbs.)	Wheelbase	26P	29R	30B	33T	34A	35N	26P	29R	30B	33T	34A	35N	26P	29R	30B	33T	34A	35N																																																				
	26'11"	12'2"	8'6"	64.1	11'6"	6'8"	8'1"	39 / 36	18	60	22,000 ⁸	16,000 ⁹	6,500 ¹⁰	10,500 ¹¹	158.5"		29'8"	12'2"	8'6"	81.2	16'	6'8"	8'1"	75	18	75	26,000 ¹² / 22,000 ¹³ / 22,000 ¹⁴	18,000 ¹⁵ / 18,000 ¹⁶ / 18,000 ¹⁷	7,000 ¹⁸ / 6,000 ¹⁹ / 7,000 ²⁰	11,000 ²¹ / 12,000 ²² / 12,000 ²³	41 / 57	18	75	26,000 ²⁴ / 22,000 ²⁵ / 22,000 ²⁶	18,000 ²⁷ / 18,000 ²⁸ / 18,000 ²⁹	7,000 ³⁰ / 6,000 ³¹ / 7,000 ³²	11,000 ³³ / 12,000 ³⁴ / 12,000 ³⁵	41 / 57	18	75	26,000 ³⁶ / 22,000 ³⁷ / 22,000 ³⁸	18,000 ³⁹ / 18,000 ⁴⁰ / 18,000 ⁴¹	7,000 ⁴² / 6,000 ⁴³ / 7,000 ⁴⁴	11,000 ⁴⁵ / 12,000 ⁴⁶ / 12,000 ⁴⁷	33'11"	12'1"	8'6"	121.1	18'	6'8"	8'1"	41 / 45	18	75	26,000 ⁴⁸ / 22,000 ⁴⁹	20,500 ⁵⁰ / 18,000 ⁵¹	7,000 ⁵² / 7,000 ⁵³	13,500 ⁵⁴ / 12,000 ⁵⁵	41 / 45	18	75	26,000 ⁵⁶ / 26,000 ⁵⁷	20,500 ⁵⁸ / 20,700 ⁵⁹	7,000 ⁶⁰ / 7,500 ⁶¹	13,500 ⁶² / 13,500 ⁶³	43 / 42	18	75	26,000 ⁶⁴ / 26,000 ⁶⁵	20,500 ⁶⁶ / 20,700 ⁶⁷	7,000 ⁶⁸ / 7,500 ⁶⁹	13,500 ⁷⁰ / 13,500 ⁷¹	35'3"	12'3"	8'6"	120.2	16'	6'8"	8'1"	43 / 42	18	75	26,000 ⁷² / 26,000 ⁷³	20,500 ⁷⁴ / 20,700 ⁷⁵	7,000 ⁷⁶ / 7,500 ⁷⁷	13,500 ⁷⁸ / 13,500 ⁷⁹

■ = Chassis A □ = Chassis B ● = Chassis C ○ = Chassis D

AUTOMOTIVE/CHASSIS

	26P	29R	30B	33T	34A	35N
Chassis A - Ford [®] 6.8L SOHC Triton [®] V10 362-hp, 5-speed overdrive transmission, hydraulic brakes, 4-wheel ABS, 130-amp. alternator	S	S	S	S	S	S
Chassis B - Workhorse [™] P-Series 8.1L Vortec V8 340-hp, 4L85-E 4-speed overdrive transmission, hydraulic brakes, 4-wheel ABS, 145-amp. alternator	0	0	0	0	0	0
Chassis C - Workhorse W-Series 8.1L Vortec V8 340-hp, 4L85-E 4-speed overdrive transmission, hydraulic brakes, 4-wheel ABS, 145-amp. alternator	S	0	0	0	0	0
Chassis D - Workhorse W-Series 8.1L Vortec V8 340-hp, Allison [®] 1000 5-speed overdrive transmission, hydraulic brakes, 4-wheel ABS, 145-amp. alternator, custom steering wheel	S	0	0	0	0	0
Tire spare, Tire Tools wrench & leverage bar, vertical tongue weight & wiring w/7-pin connector, wheelcovers (4)	S	S	S	S	S	S
Trailer Hitch 5,000-lbs. drawbar/350 lbs. maximum	0	0	0	0	0	0
Leveling Jacks hydraulic w/automatic controls, Kwikkee [®] Wheel Liners stainless steel	0	0	0	0	0	0
Shocks/Stabilizer Package front, Workhorse (P-Series only)	0	0	0	0	0	0

CAB AREA & DRIVER CONVENIENCES

	26P	29R	30B	33T	34A	35N
Beverage Holder passenger side, Cab Seats (fabric) w/3-point shoulder & lap seat belts w/retractors, armrests, lumbar support (fixed), multiadj. slide/recline & swivel, Cigarette Lighter/12-volt DC Powerpoint, Convenience Tray w/cupholders, Cruise Control, Map Lights, Map Pocket, Receptacle AC Duplex, Steering Wheel tilt w/power-assist, Sunvisors, Trim Panel driver side w/cupholder, storage tray, Window (driver & passenger) partial slider w/screen, Windshield Wipers intermittent	S	S	S	S	S	S

CAB AREA & DRIVER CONVENIENCES

	26P	29R	30B	33T	34A	35N
Cab Seats Ultra-leather HP [™]	0	0	0	0	0	0
Defroster Fans (2) aux. 2-speed w/instrument panel switch	0	0	0	0	0	0
Monitor System rearview w/single camera & one-way audio, Audiodvox [®]	0	0	0	0	0	0

ENTERTAINMENT

	26P	29R	30B	33T	34A	35N
RV Radio (cab) AM/FM Stereo/CD, speakers (4), remotes (2), handfield & steering wheel mounted, Sirius [®] Satellite ready, CB Wire Prep, Radio Antenna roof-mounted, rubber, Radio Power Switch main/aux. battery, Satellite System Ready, TV 24" Color AC stereo w/remote, cabinet, TV Enhancement Package antenna (amplified), 12-volt DC powerpoints, interior jacks, coax wiring, cable input, splitter, Video Selection System	S	S	S	S	S	S
DVD/VCR combo w/remote, Entertainment Center (external) w/CD player, DC receptacle, AC duplex receptacle, AM/FM radio, TV jack, radio antenna, speakers (2), lockable compartment, removable TV table, Home Theater Sound System amplifier, DVD/VCR combo, receiver, recessed speakers (5), subwoofer, antenna, Radios (4) 2-way, charging station, Satellite Dish Antenna RV digital, manual	0	0	0	0	0	0
Satellite Radio Sirius, antenna, wiring, receiver, includes six-month subscription (NA in Canada)	0	0	0	0	0	0
TV 13" Color DC w/remote, bedroom	0	0	0	0	0	0
TV 19" Color AC w/remote, bedroom	0	0	0	0	0	0

INTERIOR

	26P	29R	30B	33T	34A	35N
Blinds mini (lounge, dinette, galley), Ceiling fabric, Clock, Curtain front wraparound w/track, Lights reading, adj., halogen (overheads), Lights ceiling, incandescent w/wall switches, Roof Vent nonpowered, lounge, Shades pleated (bedroom), Telephone input interior jack, 12-volt DC Receptacle lounge	S	S	S	S	S	S
Roof Vent powered, ventilator fan, lounge, Shades day/night pleated (lounge, dinette, bedroom), Windows dual-gleazed/thermo-insulated, flush-mounted	0	0	0	0	0	0
Wainscoting w/char rail	S	S	S	S	S	S

CABINETS

	26P	29R	30B	33T	34A	35N
Portsmouth Oak or Sierra Maple stile-and-rail construction w/raised-panel inserts on upper doors	0	0	0	0	0	0

COUNTERTOPS

	26P	29R	30B	33T	34A	35N
Laminate w/T-mold edging	S	S	S	S	S	S

FLOORCOVERING

	26P	29R	30B	33T	34A	35N
Carpeting w/pad, Vinyl bath & galley	S	S	S	S	S	S

FURNITURE

	26P	29R	30B	33T	34A	35N
Dinette w/access to storage below, cupholders	S	S	S	S	S	S
Lounge Chair hoop-base, swivel/glider, cabinet w/table, magazine rack	S	S	0	S	S	S
Lounge Chair hoop-base, swivel/glider	S	S	S	S	S	S
Sofa w/storage below, tables (2), throw pillow	0	S	S	S	S	S
Sofa(s) w/storage below, throw pillow	S	S	S	S	S	S

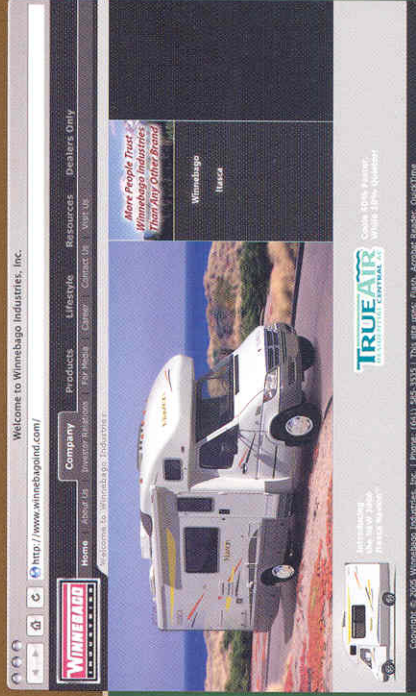
EXTERIOR GRAPHICS



Medium Parchment with Sunset/Nutmeg/Gold



Medium Parchment with Moss Green/Warm Silver/Blue



WINNEBAGOIND.COM Visit us on the web for more info on all of our motor homes, latest product updates and a host of web-exclusive content.

INTERIOR DECOR

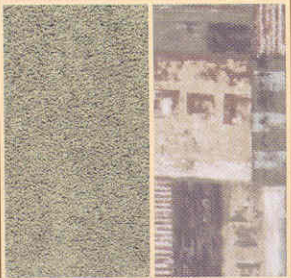
Choose from three fabric selections and two wood choices.

SOFA

LEATHER

BEDSPREAD

CARPET



Cypress Point w/available Buff UltraLeather HP™



Cinnabar w/available Buff UltraLeather HP™



Silver Oak w/available Papyrus UltraLeather HP™



Portsmouth Oak



Sierra Maple

	26P	29R	30B	33T	34A	35N
GALLEY						
Faucet single-control, Moen® Microwave Oven , Pantry , Range Hood vented w/light & fan, Range Receptacle(s) duplex, Refrigerator/Freezer double-door, Sink recessed, molded, double-bowl w/sink cover (countertop material), Wall Border	S	S	S	S	S	S
Countertop w/flip-up extension	S	S	S	S	S	S
Galley Upgrade Package range cover, wastebasket, silverware tray, raised panel refrigerator door insert, knife holder, dinette storage wire baskets	0	0	0	0	0	0
Glass Partition	S					
Microwave/Convection Oven	0	0	0	0	0	0
Range Top 3-burner w/pot & pan drawer	0	0	0	0	0	0
Storage Cabinet	0	0	0	0	0	S

	26P	29R	30B	33T	34A	35N
BATH						
Cabinets lavatory, medicine, Faucet (lavatory) dual-control, Faucet (shower) dual-control w/flexible showerhead, Light shower, Roof Vent powered, Shower w/removable clothes rod, Shower Door textured glass, Shower Skylight , Sink , Toilet w/foot-pedal flush & sprayer, Towel Rack 3-rod, mounted to door, Wall Border	S	S	S	S	S	S
Mirror frameless w/beveled edge	S	S	S			

	26P	29R	30B	33T	34A	35N
BEDROOM						
Bed queen, Serta® innerspring w/underbed storage, Bedsread pillow shams, throw pillow, Lights decorative wall lamps, Nightstand(s) , Picture(s) framed, Wall Border , Wardrobe Cabinet(s) carpeted shelf, clothes rod	S	S	S	S	S	S
Headboard		S	S			
Shirt Closet		S	S			
TV Shelf		S	S			
Vanity Cabinet w/stool (stool NA 35N)	S	S				

	26P	29R	30B	33T	34A	35N
EXTERIOR						
Awning Rails w/rain gutters, Door entrance w/separate screen door, deadbolt lock, Entrance Door Steps double, electric w/doorjamb switch, Exterior Graphics Packages Medium Parchment w/Sunset/Nutmeg/Gold or Medium Parchment w/Moss Green/Warm Silver/Blue (w/protective film below entry door), Grill aluminum, Light porch w/interior switch, Mirrors manual adj. w/convex, Mudflaps front, Receptacle AC duplex, Sidewall Skin one-piece smooth fiberglass, Storage Compartments valance panels, gas strut, single-paddle latch, lights, trunk liner, TriMark® KeyOne™ System	S	S	S	S	S	S
Awning patio	0	0	0	0	0	0
Ladder	0	0	0	0	0	0
Mirrors electric/remote w/detrost	0	0	0	0	0	0
Undercoating Workhorse	0	0	0	0	0	0

	26P	29R	30B	33T	34A	35N
SYSTEMS						
Automotive Heater/A/C , Aux. Start Circuit , Batteries (2) (coach) Group 24 deep-cycle, Battery (coach) disconnect system, Battery Charge Control automatic dual, Electrical Distribution System AC breakers, DC fuses, 45-amp. converter/charger (26P 29R, 30B only), AC & DC breaker panels, 45-amp. converter/charger (33T, 34A, 35N), Generator Prep Kit , OnePlace ® systems center, wall-mounted, energy management display (33T, 34A, & 35N only), battery condition gauge, generator hourmeter gauge, generator start/stop switch, heating & A/C thermostat, holding tank levels, LP tank level, water heater light(s), water heater switch, water pump switch, water tank level, Power Cord 30-amp., Service Center city water hookup/tank diverter fill, drainage valves, QuickPort® service connection hatch, cable input, power cord, portable satellite hookup, sewer hose 10', telephone input, Tank holding, heated compartment, Tank LP permanent mount w/gauge, TrueLevel ™ holding tank monitoring system, Water Heater 6-gallon, electronic ignition, LP gas, Water Pump demand, Water System Wintertization Package water heater bypass valve, siphon tube, Water Tank Fill gravity	S	S	S			
Air Conditioner (roof) 14,800 BTU, ceiling-ducted w/wall thermostat	S	S	S			
Air Conditioners (2) (roof) high-efficiency, ceiling-ducted w/wall thermostat, PowerLine ® energy management system				S	S	S
Air Conditioner w/Heat Pump (roof) 14,800 BTU, ceiling-ducted w/wall thermostat	0	0	0			
Air Conditioners w/Heat Pump (2) (roof) high-efficiency, ceiling-ducted w/wall thermostat, PowerLine ® energy management system				0	0	0
Furnace 30,000 BTU, low-profile, ducted, in-floor	S	S	S			
Furnace 35,000 BTU, low-profile, ducted, in-floor				S		
Furnace 40,000 BTU, low-profile, ducted, in-floor				S	S	S
Generator 4,000-watt, Onan® MicroQuiet™, gas	S	S	S			
Generator 5,500-watt, Onan Marquis Gold™, gas				S	S	S
Inverter DC/AC, 300-watt, Wash Station exterior w/pump switch located in service center, Water Heater 6-gallon, electronic ignition/110v/LP w/motoraid & aux. auto heater	0	0	0	0	0	0

	26P	29R	30B	33T	34A	35N
SLIDEOUTS						
Slideout Room bed w/slide room cover	S	S			S	
Slideout Room galley w/slide room cover, StoreMore®					S	
Slideout Room bed/wardrobe w/slide room cover		S				S
Slideout Room sofa/range w/slide room cover, StoreMore			S			
Slideout Room sofa/dinette w/slide room cover, StoreMore			S	S	S	S
Slideout Room dinette/refrigerator/pantry w/slide room cover, StoreMore	S					

	26P	29R	30B	33T	34A	35N
SAFETY						
Assist Handle exterior, Assist Bar interior, Bumpers front & rear, Child Seat Tether Anchor , Detectors/Alarms LP leak, smoke, carbon monoxide, Fire Extinguisher 10 B.C., Ground Fault Interrupter , Brake Light high-mounted, Seat Belts cab, 3-point, Seat Belts lap (in selected areas), Window escape, Windshield laminated safety glass	S	S	S	S	S	S
WARRANTY ⁷						
12-month/15,000-mile basic warranty ; ⁸ 36-month/36,000-mile warranty on structure ; ⁹ 10-year limited parts & labor warranty on roof skin ¹⁰	S	S	S	S	S	S

- The height of each model is measured to the top of the tallest standard feature and is based on the curb weight of a typically equipped unit. The actual height of your vehicle may vary by several inches depending on chassis or equipment variations. Please contact your dealer for further information.
 - Sunova floorplans feature a wide-body design — over 96" in making your purchase decision, you should be aware that some states restrict access on some or all state roads to 96" in body width. Before making your purchase decision, you should confirm the road usage laws in the states of interest to you.
 - The load capacity of your motor home is designated by weight, not by volume, so you cannot necessarily use all available space when loading your motor home.
 - Capacities are based on measurements prior to tank installation. Slight capacity variations can result due to installation applications.
 - Capacities shown are tank manufacturer's listed water capacity (W.C.). Actual filled LP capacity is 80% of listing due to overfilling prevention device on tank.
 - Actual towing capacity is dependent on your particular loading and towing circumstances which includes the GVWR, GAWR, and GCWR as well as adequate trailer brakes. Please refer to the Operator's Manual of your vehicle for further towing information.
 - See separate chassis warranty details provided in Owner's Manual.
 - See your dealer for complete warranty information.
- MA Not Available
 S Standard
 0 Optional
- Not all items available in combination. See dealer for details.
 Winnebago Industries® continuing program of product improvement makes specifications, equipment, model availability, and prices subject to change without notice. Comparisons to other motor homes are based on the most recent information available.



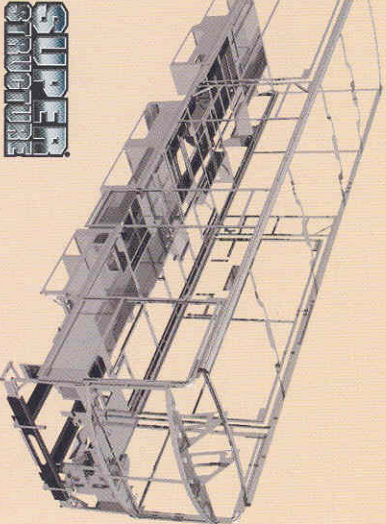
Built by Winnebago Industries. Built to last.

Itasca motor homes are built by Winnebago Industries, the company that defined motor homes. The company that built its reputation on quality construction. The company that transformed the motor home concept into a way of life.

Today, Winnebago Industries brings that reputation for quality and its 47-year history of motor home innovation to the design and construction of every motor home. It's all a part of SuperStructure,[®] our exclusive system of proprietary structural components that instills each motor home with improved strength and durability.

SOLID FOUNDATION

Steel and aluminum truss work provides a solid, flat foundation for floors and sidewalls. Winnebago Industries engineers also take special care to distribute the weight of components to ensure proper handling and stability.



**SUPER
STRUCTURE**

INTERLOCKING JOINTS The floors, sidewalls and roof are all integrally connected using interlocking joints. This creates a coach body that acts as a cohesive unit for improved strength and durability.

E-COATING Winnebago Industries employs an exclusive 12-stage automotive-style dip tank process to apply an advanced electrodeposition coating on critical steel components for unmatched corrosion protection.

THERMO-PANEL[®] SIDEWALLS Invented by Winnebago Industries, Thermo-Panel construction combines a fiberglass panel, high-density, block-foam insulation and aluminum support structures to create some of the most durable, lightweight sidewalls in the industry.

FIBERGLASS ROOF Every Itasca motor home features a one-piece fiberglass roof backed by a 10-year limited parts-and-labor roof skin warranty.

ATTENTION TO DETAIL Whether it's sending every coach through a high-pressure water tunnel to check for leaks or labeling each individual wire and barcoding parts to save time and frustration during service, Winnebago Industries considers every detail to ensure your Itasca motor home provides you with years of pleasure.

STRONG AS STEEL Appliances are secured directly to embedded steel plates for added safety. Windshields are also mounted in steel with an automotive-style sealant; lesser designs use a rubber gasket to mount the windshield in fiberglass.



TAKE A TOUR We're proud of our process, state-of-the-art facilities and the people who make Winnebago Industries number one. We invite you to visit our factory in Forest City, Iowa, for a first-hand look at the dedication and technology behind every motor home we build.

RECOGNIZED QUALITY The Recreation Vehicle Dealer Association annually rates RV manufacturers and awards the Quality Circle award to manufacturers who provide exceptional products, service and support. Winnebago Industries is proud to be the only manufacturer to receive this award every year since its inception.



COMMITTED TO SERVICE We back our motor homes with the industry's best service after the sale.

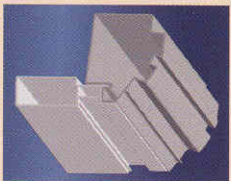


- 12-month/15,000-mile basic limited warranty
- 36-month/36,000-mile warranty on structure
- Standard 10-year limited parts-and-labor roof skin warranty
- Complimentary 24-hour roadside assistance program
- TripSaver Fast Track Parts: TripSaver guarantees that in-stock warranty parts ship directly to your dealer within 24 hours.
- National dealer service network



WIT CLUB Itasca owners are like family. Joining the Winnebago-Itasca Travelers is a great way to meet and travel with other Itasca enthusiasts. Members enjoy:

- Caravans and rallies
- Local and state group activities
- RV travel benefits



Built proudly by



NVSE listing: WGO

For Sales and Service Information Contact:

©2005 Winnebago Industries, Inc.

Printed in USA

Seat belts are your most important hookup. Always buckle up.