

AMBASSADOR

AMBASSADOR

2016 HOLIDAY RAMBLER | CLASS A DIESEL



2016 CLASS A DIESEL



HOLIDAY RAMBLER

Your new family room





Family, fireside, and freedom of the open road exist to be experienced in the premium-diesel Holiday Rambler Ambassador. With the comfort of opposing living area slide-outs, you don't have to travel too far to entertain. But, wherever you decide to roam, Ambassador calls the road your home.

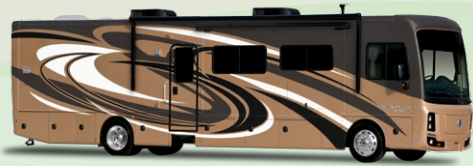
Ambassador Top Features

- 40" LED TV
- LED Lighting
- Hardwood Cabinet Doors/ Drawers
- One-Piece Panoramic Windshield
- Full-Body Paint
- Side-Swing Luggage Doors
- 22.5" Aluminum Wheels
- Pass-Through Basement Storage
- 4-Point Auto Hydraulic Leveling Jacks
- Seamless Sidewall Transitions
- Sideview Cameras
- Dual-Pane Windows
- Awning w/LED Light Strip
- 84" Interior Height
- Combo or Stackable Washer/ Dryer (Optional)
- Drop Down Overhead Bed (Optional)

AMBASSADOR 38DBT SHOWN IN GATEWAY GRAY DÉCOR WITH GLAZED HILLSIDE CHERRY WOOD CABINETRY

2016 Graphics and Décor

Go to ***holidayrambler.com*** and build your own Ambassador!



CAPPACCINO



DOWNTOWN BROWN



GATEWAY GRAY

Inside and out, Ambassador offers a wide selection of colors, styles, and finishes. From the moment you lay eyes on Ambassador, the high-style graphics and décor collections welcome you with gracious beauty and contemporary design. We've paid attention to every detail. Wherever you are, you'll feel right at home.

LINEN RETREAT

SOFA



ACCENT



BEDSPREAD



COUNTERTOP



FLOORING



CARPET

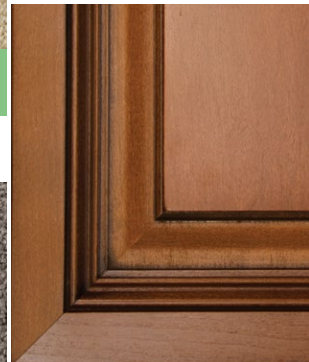


CABINETRY

GLAZED FULTON
CHERRY

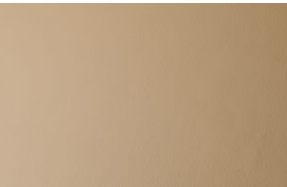


GLAZED HILLSIDE
CHERRY



WATERFORD II

SOFA



ACCENT



BEDSPREAD



COUNTERTOP



FLOORING

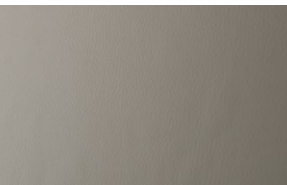


CARPET

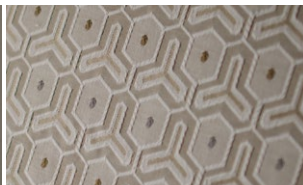


GATEWAY GRAY

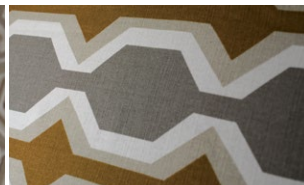
SOFA



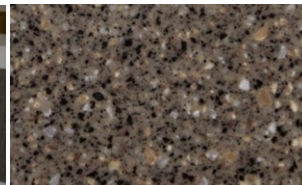
ACCENT



BEDSPREAD



COUNTERTOP



FLOORING



CARPET



Standard Features and Options

INTERIOR THROUGHOUT

- 2,000 Watt Inverter & 4 House Batteries
- 10 Gallon Water Heater (Gas & Electric)
- Electrical System w/ Neutral Loss Protection
- 84" Interior Height
- Centralized Controls
- Comfort Fit Furniture By Villa®
- Complete PEX Plumbing System
- Convenience Center In Hallway
- Deluxe Roller Bearing Draws w/Transit-Ship Locks
- Digital Satellite System Prep
- Dual 13.5 Btu/h Air Conditioning Systems
- Dual 25M Btu/h & 20M Btu/h Electric Furnaces
- Laminated Tile Flooring
- Throughout
- LED Lighting
- On-Demand Water Pump
- Satin Nickel Cabinetry Hardware & Bath Accessories
- Soft Touch Padded Vinyl Ceiling
- Solar Shades & Room Darkening Shades
- Washer & Dryer Prep
- Water Heater By-Pass Valve
- Whole House Water Filter System
- Wood Finish Return Air Intake For Furnace
- Wood Glazed Cabinetry

Optional

- 32" LED TV
- Drop Down Queen Bed
- Canadian RV Certification

DRIVER CONVENIENCE

- 3-Point Seatbelts at Driver & Passenger Seats
- Driver/Passenger Pedestal Table
- Power Passenger Seat w/ Power Footrest
- 6-Way Power Driver's Seat
- Air Suspension Dump Switch
- Automotive Style Dash
- Battery Boost Switch
- Color Back-Up Monitor
- Cruise Control
- Dash Radio w/4 Speakers
- Driver/Passenger Cup Holders
- DVD Player
- Full Air Brakes
- High-Output Auto AC/ Heater Combo
- Intermittent Wiper Control
- Power Driver/Front Passenger Shade/Sun Visor
- Remote/Heated Rear-View Mirrors w/Side-View Cameras
- Soft-Touch Automotive Dash
- Soft-Touch Pilot & Co-Pilot Seats
- Tilt/Telescoping Steering Wheel

Optional

- Auto Start Generator
- Satellite Radio

LIVING ROOM

- 40" LED TV w/Remote, DVD Player & Sound Bar
- Decorative Pillows
- Wood Grain Laminated Dinette Top

Optional

- Expandable L-Sofa (38FST)
- 13.5 Btu/h Air Conditioner w/Heat Pump
- Central Vacuum System

GALLEY

- Residential Refrigerator
- Cabinet Toe Kicks
- Convection Microwave Oven w/Built-In Range Hood & Lights
- Decorative Kitchen Backsplash
- Fan-Tastic® Roof Vent
- Full Extension Ball-Bearing Drawer Guides
- Galley Window w/Mini Blinds
- High Output 3-Burner Cooktop
- Large 50/50 Dual Stainless Steel Sink
- LED Task Lighting
- Overhead Cabinets w/ Adjustable Shelves
- Polished Solid Surface Countertops
- Removable Solid-Surface Sink & Cooktop Covers
- Soft-Touch Booth w/Dream Dinette Table System (38DBT)
- Under-Galley Shelving & Wastebasket

Optional

- Recessed 3 Burner Cooktop w/Oven
- Free-Standing Dinette Table w/Two Chairs & Two Folding Chairs (38DBT)

BEDROOM

- Comforter w/Decorative Pillows & Shams
- Exclusive Dream Easy Queen Foam Mattress
- Hardwood Headboard
- 32" LED TV w/Remote
- Combo Washer/Dryer
- Incline Washer/Dryer
- Stackable Washer/Dryer
- King Bed (38DBT)
- Queen Memory Foam Mattress 60" x 80"
- King Memory Foam Mattress 72" x 80" (38DBT)

Optional

- Bunk Beds (38FST)

BATHROOM

- One-Piece Fiberglass Shower w/Glass Shower Door
- Shower Skylight
- Solid-Surface Vanity Top
- Stainless Steel Lavy Sink
- VacuFlush® Toilets (38DBT)

SAFETY/CONVENIENCE (INTERIOR)

- Carbon Monoxide Detector
- Energy Management System w/Soft-Start
- Fire Extinguisher
- LP Gas Detector
- Multiple Seatbelt Locations
- Multiple Water Pump Power Switches
- San-T-Flush™ Holding Tank Rinsing System
- Smoke Detector
- Touch Sensor Tank Monitoring System

EXTERIOR THROUGHOUT

- 22.5" Aluminum Wheels
- 50 Amp 120V Distribution Panel & Power Cord
- Continuous One-Piece Compartment Seals
- Dual Fuel Fills
- Easy Access Engine Door
- Electric Patio Awning w/ LED Light Strip
- Entry Assist Handle
- Exterior Shower
- Exterior TV Hookups In Storage Bay
- Fog Lights
- Full-Body Paint
- Heated Power Exterior Mirrors w/Turn Signals
- High Gloss Fiberglass Exterior Walls
- Hydraulic 4-Point Automatic Levelers
- Large Lighted Roto-Molded Polyethylene, w/ Wash-Out Compartment Drains
- Large One-Piece Bonded Windshield
- LED Clearance Lights & Side Markers
- Lighted Entry Assist Handle
- Lighted Exterior Storage
- Lights In Outside Storage Compartments
- Mud Flaps
- Onan® 6.0 kW Quiet Diesel Generator
- Pass-Through Storage Compartments
- Power Entry Step
- Pressurized Water Fill
- Seamless Sidewall Transitions
- Side Swing, Insulated Aluminum Luggage Doors w/Single Paddle Latch & Corrosion Resistant Steel Hinges
- Single-Motor Windshield
- Side-Out Topper Window Awnings
- Sliding Storage Tray
- TPO Roof
- Two 6V Deep Cycle House Batteries
- Under-Hood Utility Light
- Vacu-Bond® Floor, Sidewalls and Ceilings
- 2 Piece Rear Ladder
- Exterior LED TV

Optional

- Protective Front Mask

SAFETY/CONVENIENCE (EXTERIOR)

- 20' Sewer Hose
- 30" Radius Entrance Door
- 3rd Brake Safety Light
- 4-Wheel ABS Brakes
- Automotive Safety Glass
- Battery Disconnect Switch
- Daytime Running Lights
- Deadbolt Lock on Entrance Door
- Easy-Sweep Flooring at Entry Step
- Egress Window
- Entry Assist Handle
- Entry Door w/Screen Door & Deadbolt Lock
- Front Anti-Lock Braking System
- Metal Fuel Door & Lock
- Porch Lights (Door-Side)
- Power Entry Step

BODY STRUCTURE

- 30" Deep Bedroom Slide-Out
- Aluminum Interlocking Floor Wall & Ceiling Framing
- Fiberglass Wheel Skirts
- Frameless Flush Mounted Windows w/Dark Tint
- Front & Rear Molded Fiberglass Caps
- Radius Roof w/Ducted A/C
- Side Hinge Luggage Doors
- Undercoating
- Vacu-Bond® High Gloss Exterior Fiberglass Walls

Ambassador Floor Plans

WEIGHTS & MEASUREMENTS

MODELS	38DBT	38FST
Wheelbase (inches)	266"	266"
GVWR (lbs) ¹	28,000	28,000
Front GAWR (lbs) ²	10,500	10,500
Rear GAWR (lbs) ²	17,500	19,000
GCWR (lbs) ³	33,000	33,000
Hitch Rating Weight (lbs) ^{†, ††}	5,000	5,000
Tongue Weight (lbs) [†]	500	500
Fuel Capacity (gal)	90	90

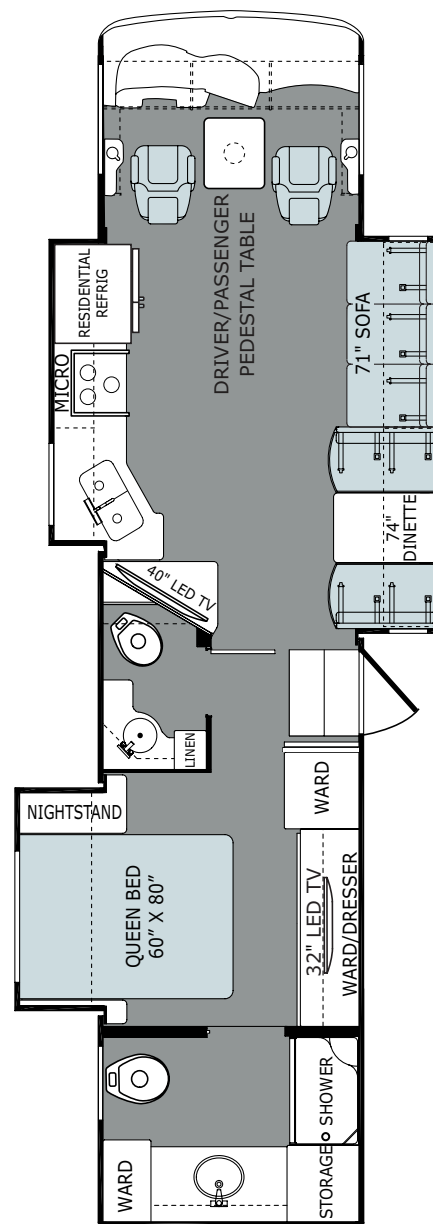
ROADMASTER™ B340

Model: Roadmaster™ B340
 Engine: Cummins® ISB 6.7L
 Transmission: Allison® 2500 MH
 6 speed w/Electric Shifter

Alternator: 160 Amp
 Torque: 700 lb-ft @ 1,600 RPM
 Horsepower: 340HP

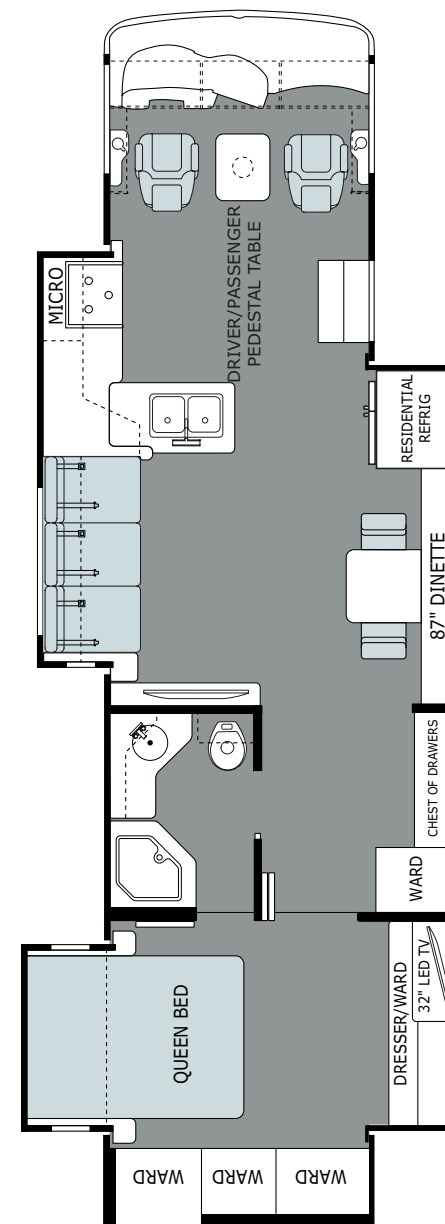
DIMENSIONS & CAPACITIES

MODELS	38DBT	38FST
Overall Length ⁴	38' 11"	38' 11"
Overall Height (with A/C)	11' 10"	11' 10"
Overall Width (maximum) ^{5, 6}	102"	102"
Interior Height (maximum)	84"	84"
Interior Width (maximum)	96"	96"
Interior Storage (cu. ft.)	209	204
Exterior Storage (cu.ft.)	131	126
Patio Awning Width	20'	20'
Fresh Water Holding Tank (gal)	77	77
Grey Water Holding Tank (gal)	60	60
Black Water Holding Tank (gal)	32	32
Appliance Propane Tank (gal) (WC) ⁷	28	28
Water Heater Tank (gal)	10	10



38DBT

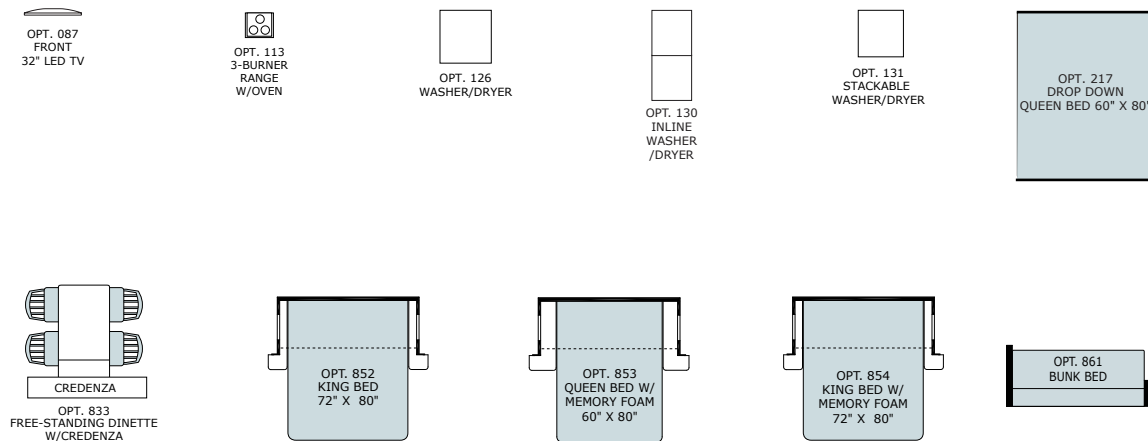
AVAILABLE OPTIONS: 087, 113, 126, 131, 217, 833, 852, 853, 854



38FST

AVAILABLE OPTIONS: 087, 113, 126, 130, 191, 217, 853, 861

FLOOR PLAN OPTIONS



Addendums

1. GVWR (Gross Vehicle Weight Rating) is the maximum permissible weight of this fully loaded motorhome. The GVWR is equal to or greater than the sum of the (UVW) unloaded vehicle weight plus the (OCCC) occupant cargo-carrying capacity.*
 2. GAWR (Gross Axle Weight Rating) is the maximum permissible loaded weight a specific axle is designed to carry.
 3. GCWR (Gross Combined Weight Rating) is the value specified by the motorhome manufacturer as the maximum allowable loaded weight of this motorhome with its towed vehicle. Towing and braking capacities may be different. Refer to Holiday Rambler and chassis manufacturer's manuals for complete information.
 4. Length measured from front bumper to rear bumper (excludes accessories).
 5. Excludes safety equipment and awnings.
 6. Motorhomes feature a body width over 96" which will restrict your access to certain roads. Before purchasing, you should research any state and/or province road laws which may affect your usage.
 7. Tank manufacturer's listed water capacity (WC). Actual propane capacity is 80% of water listing as required by the safety code.
- † The chassis manufacturer recommends the installation of a supplemental brake control system to activate the brakes on the vehicle or trailer you are towing. Hitch receiver ratings expressed are maximum for the hitch receiver installed and may require the purchase of additional equipment that is dependent on the weight of the towed load. Consult with hitch receiver manufacturer for further information.
- †† Minimum Towable Load is the available weight, up to GCWR, when the coach is fully loaded to maximum GVWR. However, if the coach is loaded to something less than maximum GVWR, that extra available weight can be added to your Towable Load. For example, if your coach is loaded to 1000lbs less than maximum GVWR, your Towable Load increases accordingly.
- * UVW and OCCC are found on the label containing the federal certification tag in each RV.



HOLIDAY RAMBLER®

**WARRANTY INFORMATION:**

Enjoy your next RV adventure with the peace of mind that comes with a 12 month/24,000 mile basic limited warranty; a 5 year/50,000 mile limited warranty on aluminum or steel frame structure. Review your coach's limited warranty in full for complete terms and conditions.

CONTACT US

To locate a dealer near you, visit our website at www.holidayrambler.com or call (877) 466-6226. We can also be contacted at Holiday Rambler Customer Relations, P.O. Box 1007, Decatur, IN 46733.

IMPORTANT—PLEASE READ: Product information, photography and illustrations included in this publication were as accurate as possible at the time of printing. For further product information and changes, please visit our website at www.holidayrambler.com or contact your local Holiday Rambler dealer. Prices, materials, design and specifications are subject to change without notice. All weights, fuel, liquid capacities and dimensions are approximate. Holiday Rambler has designed its recreational vehicles to provide a variety of uses for its customers. Each vehicle features optimal seating, sleeping, storage and fluid capacities. The user is responsible for selecting the proper combination of loads (i.e., occupants, equipment, fluids, cargo, etc.) to ensure that the vehicle's capacities are not exceeded.

ALLIED RECREATION GROUP®

**YOUR LOCAL HOLIDAY RAMBLER DEALER IS:**