

V E C T R A





THE FINEST HOMES ARE BUILT

ON THE STRONGEST FOUNDATIONS.

WHEN WE SET OUT TO CREATE THE
VECTRA®, WE WANTED IT TO BE
SOMETHING MORE THAN A MOTOR
HOME. WE WANTED IT TO BECOME
A STANDARD AGAINST WHICH
OTHER MOTOR HOMES WOULD
BE MEASURED. TO JUDGE FOR
YOURSELF HOW THE VECTRA
COMPARES, WE INVITE YOU
TO INSPECT IT AS YOU WOULD
ANY FINE HOME. CONSIDER THE
OVERALL IMPRESSION IT MAKES.
AND PAY SPECIAL ATTENTION TO
THE DETAILS.



A well-appointed interior makes the Vectra a pleasure to own. A six-way adjustable driver's seat assures comfort behind the wheel. The available overhead entertainment center contains a 19" TV and VCR with remote control.



Available leather seating provides an added measure of comfort and luxury. Three-point shoulder and lap seat belts provide comfortable security. The convenient beverage tray and integrated cassette storage are within easy reach.



The functional cockpit has an AM/FM cassette deck and available rear-view monitor. Other choices include an available AM/FM stereo with compact disc or 10-disc changer.



Comfort and safety are foremost in the Vectra's design. A standard driver's side door makes access easy. The panoramic view through the windshield is enhanced by forward-mounted rear view mirrors and adjustable sunvisors.



You'll find lighted and lined basement storage along both sides of the Vectra. Cargo netting in cross-coach compartments keeps items in place. Gas struts make opening easy and hold doors up and out of the way.



This available 10-watt solar panel, a convenient new feature, trickle charges and extends the life of batteries.



The available patio entertainment center has an AM/FM/cassette deck and speakers, pull-out patio table and TV hookup for outdoor enjoyment.



The heated holding tank compartment houses a wash station and easy-access valves plus a trap door that lets the sewer line pass through without keeping the compartment open.

In the Vectra, every effort is made to ensure maximum

safety. The available six-way

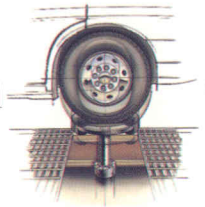


power-adjustable

captain's seat is designed to optimize comfort and mini-

mize fatigue. And our manufacturing process includes

more safety checks, quality inspections and



product testing than any other motor home builder.



A HOME SHOULD HAVE ITS

OWN CHARACTER, YET REFLECT

YOUR PERSONALITY.

A FINE HOME SHOULD HAVE ITS OWN PERSONALITY AND GIVE YOU AMPLE OPPORTUNITY TO EXPRESS YOURS. THE CHARACTER OF THE VECTRA IS REFLECTED IN LUXURIOUS FABRICS, SPACIOUS LOUNGE AND DINING AREAS AND THE WARMTH OF BEAUTIFUL CABINETRY. YOU'RE INVITED TO EXPRESS YOUR TASTES WITH A CHOICE OF COLOR THEMES AND OPTIONS LIKE FLOURESCENT LIGHTING, COLOR TVS, A VCR AND A CD PLAYER/CHANGER.



The Vectra's galley rivals any fine kitchen with a large double-door refrigerator/freezer, water purification system, available ice maker and eye-level microwave oven or available microwave/convection oven. Available oak plank flooring complements the cabinetry.



You'll find a tasteful blend of comfort and style throughout the Vectra, from premium-quality carpeting to a choice of ash or cherry cabinetry. Standard central air distributes cool air evenly. An available central vacuum makes cleanup easy.



A built-in, under-counter dishwasher is one of the extras you can add to your kitchen in the 35RQ or 37RW.



The available free-standing dinette comfortably seats two to four. Chairs with matching upholstered seats fold for easy storage.



The recessed three-burner range can be covered to increase counter space. It includes one high-output burner for extra heat or high altitude cooking.



Showcase treasures in this lighted china closet with mirrored walls and adjustable shelves. (34RA only).

The Vectra's cabinetry is handcrafted of materials

selected by our experienced cabinet shop personnel, then

hand rubbed for

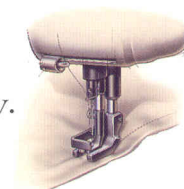


even staining. Our design

team coordinates interior decor for the most luxurious

look. Then we manufacture many of our own furnishings

to ensure comfort and durability.



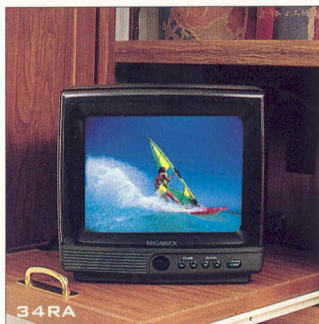


A WELL-DESIGNED HOME SHOULD INCREASE YOUR COMFORT LEVEL.

IN A WELL-DESIGNED HOME, A HIGH LEVEL OF LUXURY AND COMFORT IS APPARENT EVERYWHERE, INCLUDING THE BEDROOM. THE COLOR THEMES ESTABLISHED IN THE VECTRA'S LOUNGE AREA CONTINUE IN THE BEDROOM WITH COORDINATED WINDOW TREATMENTS AND BEDDING. NIGHTSTANDS AND DECORATOR READING LAMPS ARE DETAILS THAT CONTRIBUTE TO A RELAXING ENVIRONMENT. AN AVAILABLE REMOTE-CONTROLLED COLOR TV AND STEREO WITH AM/FM/CASSETTE DECK ARE FINISHING TOUCHES.



The Vectra's generous storage areas are both attractive and functional. Here a linen closet with spacious drawers below is flanked by carpeted wardrobes and mirrored doors.



This available remote-controlled color TV fits neatly into a corner cabinet in the bedroom or in the rear wardrobe, depending on the model.



A lighted mirror, medicine cabinet, large sink and porcelain toilet are just a few of the features of this well-appointed bathroom.



This is everything a bedroom is supposed to be: spacious, relaxing and comfortable. The walk-around Sealy® innerspring queen bed is framed by nightstands and closet space. Lamps and an available AM/FM/cassette deck are within easy reach.



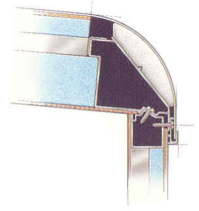
Bathroom configurations vary to make the best use of space. All feature a porcelain toilet, large sink and convenient second water pump switch.



Showers feature a skylight, single-piece wall surround and either a folding door, binged glass door or sliding glass door.

The Vectra is built to the highest standards in the

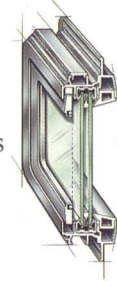
motor home industry. For example, the floor,



sidewalls and roof positively lock together with a unique

jointing system for structural integrity. And dual-glazed,

thermo-insulated windows (available in the 35RQ



and 37RW) provide superior insulation and reduce noise.

CHOOSE THE INTERIOR YOU'LL

FEEL MOST AT HOME IN.

Rosewood



Provence



Travertine




The interior of the Vectra is designed to keep its classic good looks. There's no need to worry about spills. All upholstery and carpeting is protected against stains with Scotchgard™ Brand Soil Repellent. The 100% stain-resistant carpeting carries an extensive stain and wear warranty.



A Winnebago motor home is more than just a great investment. It's a ticket to a world of fun, camaraderie and support.

Foremost is our Winnebago-Itasca Travelers (WIT) Club. The WIT Club lets you meet other Winnebago Industries motor home owners and access unique club services like professional trip routing and mail forwarding.

When you join the Winnebago Motorsports Team you'll be right at home at racing events across America. Winnebago has been designated the Official Motor Homes of  and is closely associated with several NHRA drag racing teams. Also, a growing number of NASCAR and NHRA drivers are involved with the Winnebago Motorsports Team. Motorsports members enjoy many benefits including a quarterly newsletter, a racing merchandise catalog and the opportunity to participate in special on-track events at selected races.



Down the road, factory support is never far behind. Twenty-four-hour emergency road service



pays for towing to a factory authorized dealer at no cost to you. With over 20,000 locations throughout North America, quality assistance is just a phone call away with our Preferred Care Program. Plus, our warranty program is one of the most comprehensive in the industry, starting with 12-month or 15,000-mile protection. In addition, structural components are covered for 36 months/36,000 miles. Furthermore, a 10-year limited warranty protects the roof and wall.

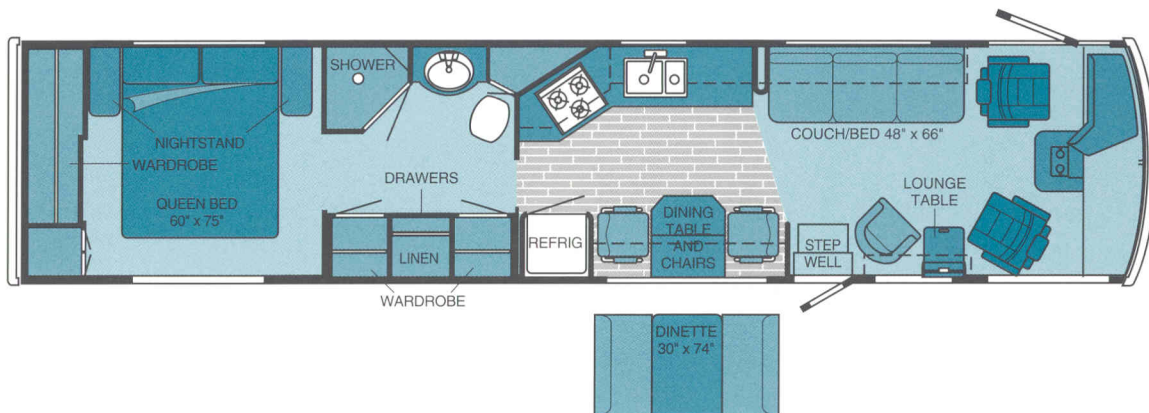
If you'd like to know more about Winnebago and our motor homes, we invite you to visit one of our outstanding dealers, or visit us at our headquarters in Forest City, Iowa. Just call us at (515) 582-3535 for a free factory tour.

V E C T R A
F L O O R P L A N S
A N D
S P E C I F I C A T I O N S

When you look at the blueprints for a fine home, you see how the wants and needs of a discriminating homeowner are translated into a unique living space. When you look at the floorplans for the Vectra, you see a unique living space that meets the wants and needs of discriminating motor home owners.

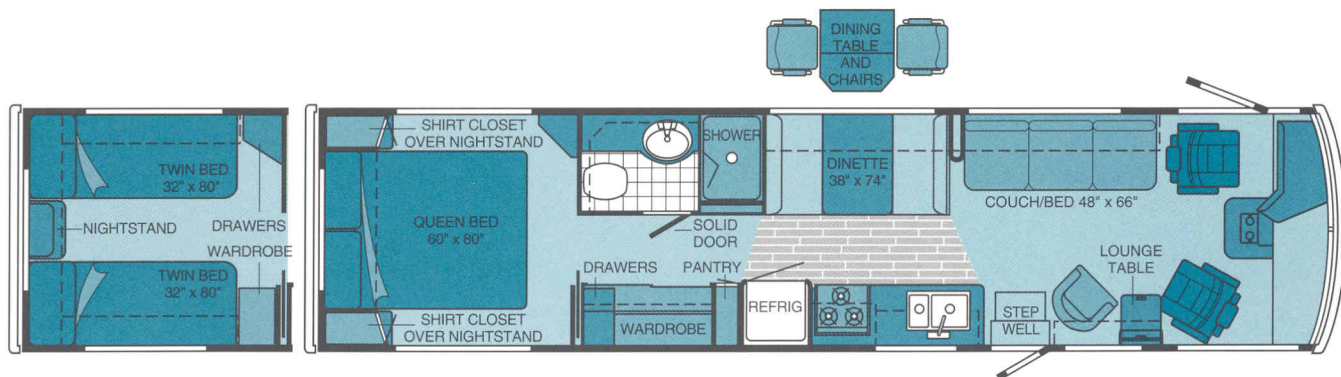
Every Vectra includes a generous number of standard features that make it an outstanding value, as well as exciting options that will make your Vectra unique for you.

VECTRA FLOORPLANS



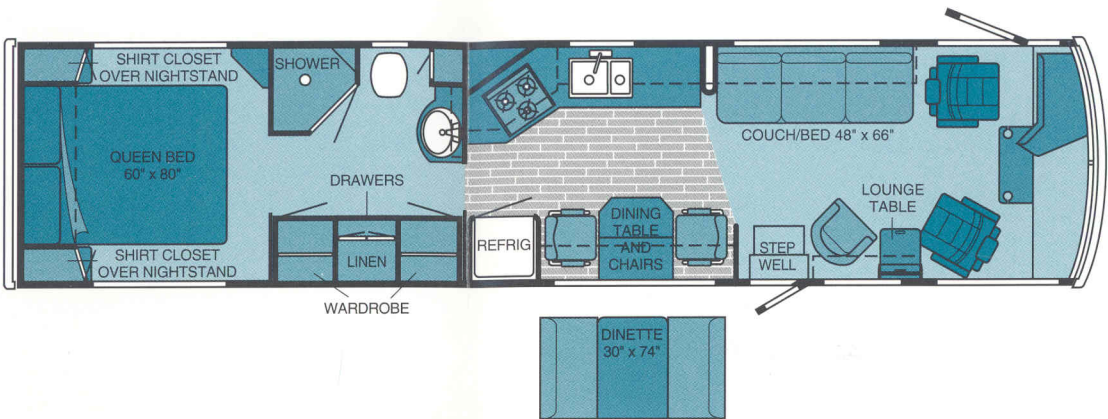
1995 VECTRA 37RW

Length	36'11"	Fuel Capacity – Ford	75 gal.
Exterior Width	8'	Fresh Water Capacity w/Heater	86 gal.
Interior Height	6'8"	Holding Tanks Capacity	105 gal.
Interior Width	7'7"	LP Capacity	100 lbs.
Fuel Capacity – Chevrolet	78 gal.	Wheelbase	228" + Tag

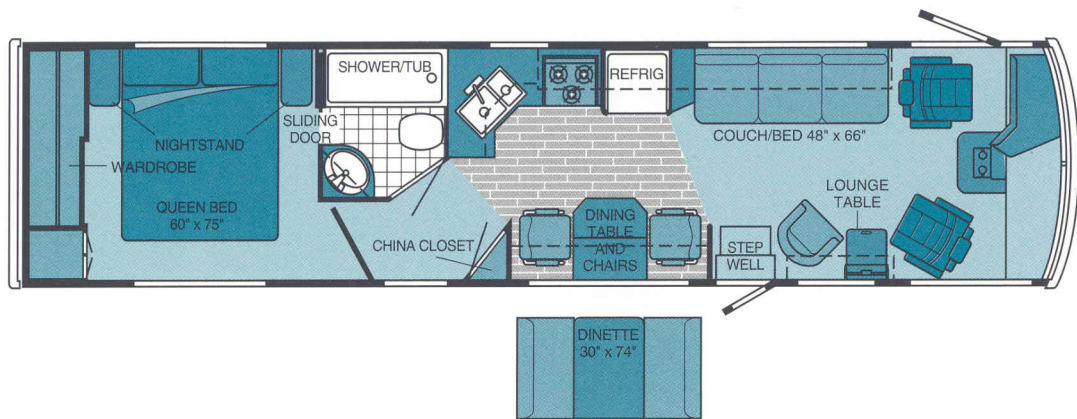


1995 VECTRA 33RQ

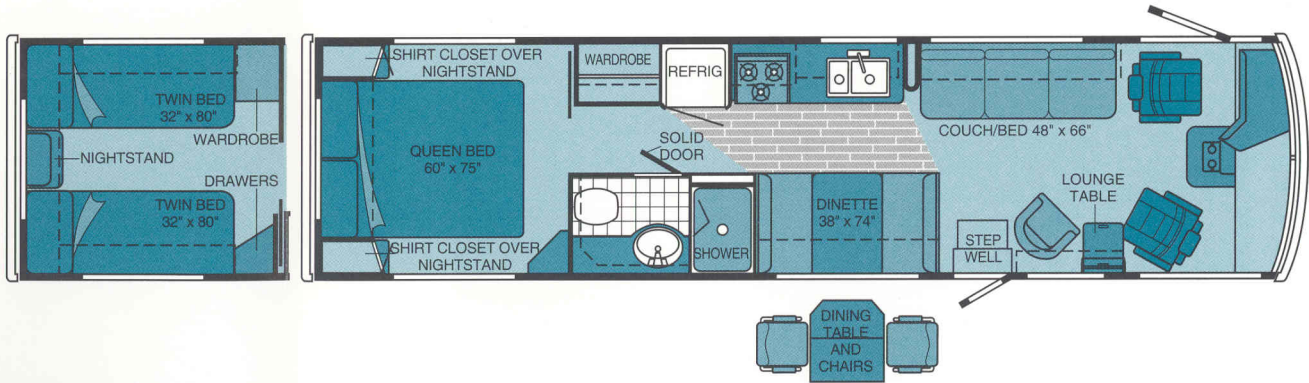
Length	33'7"	Fuel Capacity – Ford	75 gal.
Exterior Width	8'	Fresh Water Capacity w/Heater	76 gal.
Interior Height	6'8"	Holding Tanks Capacity	105 gal.
Interior Width	7'7"	LP Capacity	100 lbs.
Fuel Capacity – Chevrolet	78 gal.	Wheelbase	228"



1995 VECTRA 35RQ-P			
Length	35'5"	Fresh Water Capacity w/Heater	92 gal.
Exterior Width	8'	Holding Tanks Capacity	105 gal.
Interior Height	6'8"	LP Capacity	130 lbs.
Interior Width	7'7"	Wheelbase	228"
Fuel Capacity – Pusher	90 gal.		



1995 VECTRA 34RA			
Length	34'9"	Fuel Capacity – Ford	75 gal.
Exterior Width	8'	Fresh Water Capacity w/Heater	76 gal.
Interior Height	6'8"	Holding Tanks Capacity	105 gal.
Interior Width	7'7"	LP Capacity	100 lbs.
Fuel Capacity – Chevrolet	78 gal.	Wheelbase	228"



1995 VECTRA 31RQ			
Length	31'7"	Fuel Capacity – Ford	75 gal.
Exterior Width	8'	Fresh Water Capacity w/Heater	86 gal.
Interior Height	6'8"	Holding Tanks Capacity	99 gal.
Interior Width	7'7"	LP Capacity	100 lbs.
Fuel Capacity – Chevrolet	78 gal.	Wheelbase	208"

VECTRA SPECIFICATIONS

	31RQ	33RQ	34RA	37RW	35RQ-P
1995 VECTRA					
Length	31'7"	33'7"	34'9"	36'11"	35'5"
Exterior Height – Chevrolet†	11'2"	10'11.5"	11'	11'2"	NA
Exterior Height – Ford†	11'	11'2"	11'1"	11'1"	NA
Exterior Height – Pusher†	NA	NA	NA	NA	11'6.5"
Exterior Width	8'	8'	8'	8'	8'
Interior Height	6'8"	6'8"	6'8"	6'8"	6'8"
Interior Width	7'7"	7'7"	7'7"	7'7"	7'7"
Exterior Storage	85.8 cu. ft.	116.5 cu. ft.	120.8 cu. ft.	93.2 cu. ft.	93.5 cu. ft.
Fuel Capacity – Chevrolet	78 gal.	78 gal.	78 gal.	78 gal.	NA
Fuel Capacity – Ford	75 gal.	75 gal.	75 gal.	75 gal.	NA
Fuel Capacity – Pusher	NA	NA	NA	NA	90 gal.
Fresh Water Capacity w/Heater	86 gal.	76 gal.	76 gal.	86 gal.	92 gal.
Holding Tanks Capacity	99 gal.	105 gal.	105 gal.	105 gal.	105 gal.
LP Capacity	100 lbs.	100 lbs.	100 lbs.	100 lbs.	130 lbs.
GVWR – Chevrolet (1994 Chassis/1995 Chassis)	16,000 / 16,500 lbs.	16,000 / 16,500 lbs.	16,000 / 16,500 lbs.	18,000 lbs.	NA
GVWR – Ford	17,000 lbs.	17,000 lbs.	17,000 lbs.	19,000 lbs.	NA
GVWR – Pusher	NA	NA	NA	NA	21,500 lbs.
Wheelbase	208"	228"	228"	228" + Tag	228"

- Standard
- Optional

	31RQ	33RQ	34RA	37RW	35RQ-P
AUTOMOTIVE					
Chassis – Chevrolet – 7.4L 454 V-8 Fuel-Injected Gasoline Engine, Automatic Transmission w/Overdrive & Cooler, Front Suspension: Independent, Coil Spring w/Aux. Air Springs, Rear Suspension: Leaf Spring, 630-CCA Battery/105-Amp. Alternator	●	●	●	●	
Chassis – Ford – 7.5L 460 V-8 Fuel-Injected Gasoline Engine, Automatic Transmission w/Overdrive & Cooler, Front Suspension: Mono-Beam Axle w/Leaf Spring, Rear Suspension: Multi-Leaf Spring, 650-CCA Battery/130-Amp. Alternator	○	○	○	○	
Chassis – Oshkosh – 5.9L Turbo-Charged/After-Cooled 230-Horsepower Cummins Diesel Engine, Allison 6-Speed Automatic Transmission & Cooler, I-Beam Axle w/Leaf Spring Front Suspension, Leaf Spring Rear Suspension, 923-CCA Battery, 100-Amp. Alternator, Air Flow Indicator, Engine Block Heater, Fuel/Water Separator, Full Air Brakes					●
Chassis – Spartan – 5.9L Turbo-Charged/After-Cooled 230-Horsepower Cummins Diesel Engine, Allison 6-Speed Automatic Transmission & Cooler, I-Beam Front Axle w/Air Suspension, Air Rear Suspension, 1125 CCA Battery, 105 Amp Alternator					○
Shocks (Gas) – Front, Chevrolet	○	○	○	○	

- Standard
- Optional

	31RQ	33RQ	34RA	37RW	35RQ-P
DRIVER CONVENIENCES					
Suspension (Air) – w/Park, Level	○	○	○		
Suspension (Air) – Tag Axle				●	
Suspension (Air) – Rear & Tag Axle w/Park, Level				○	
Tires (Radial) w/Spare	●	●	●	●	●
DRIVER CONVENIENCES					
Battery Charge Control – Dual, Automatic	●	●	●	●	●
Battery Charger (Solar) Wiring Prep	●	●	●	●	●
Battery Charger (Solar)	○	○	○	○	○
Battery Disconnect – Auxiliary	●	●	●	●	●
Cabinet – Center Console					●
Cassette Tape Storage, Defroster Fans Aux. 2-Speed, Driver's Side Door, Floor Mats – Driver, Passenger and Entry, Hood Light, Sunvisors, Windshield Wipers (Intermittent) – Pantographic	●	●	●	●	●
Cigarette Lighter/12-Volt Power Supply	●	●	●	●	●
Convenience Tray	●	●	●	●	
Cruise Control	●	●	●	●	●
Door Locks – Power w/Remote	FP	FP	FP	FP	FP

- Standard
- Optional

	31RQ	33RQ	34RA	37RW	35RQ-P
Fog Lamps	○	○	○	○	○
Heating/Air Conditioning – Automotive Blend Air System	●	●	●	●	●
Hood Release – Exterior Key Locks	●	●	●	●	●
Horn* – Air, Mounted under Hood	○	○	○	○	○
Lamps (2) – Auxiliary Side Illumination	●	●	●	●	●
Map Lights (2) – w/Remote Switches	●	●	●	●	●
Mirrors (Rear View) – Forward Mounted	●	●	●	●	●
Mirrors (Rear View) – Electronically Controlled, Heated	○	○	○	○	○
Rearview Monitor System – Video/Audio	○	○	○	○	○
Seats w/3-Point Retracting Seat Belts – 6-Way Manual Adjust Driver's Pedestal, Reclining High-Back Design, Hinged Armrests, Headrest, Lumbar Support	●	●	●	●	●
Seat Pedestal* (Driver) – 6-Way Power Adjustable	○	○	○	○	○
Seats (Driver & Passenger) – Leather Insert	○	○	○	○	○
Service Light (Driver's Side)	●	●	●	●	●
Shades – Pleated Front Wraparound	●	●	●	●	●
Squeegee – Long Handle, Stored under Hood	●	●	●	●	●
Start Circuit – Auxiliary	●	●	●	●	●
Steering – Power Assisted w/Tilt Wheel	●	●	●	●	●
Steering Wheel (Custom) – NA Ford	○	○	○	○	○
Storage Cabinet (Overhead)	●	●	●	●	●
Window (Power) – Driver	●	●	●	●	●
Window (Sliding) – Passenger, w/Screen	●	●	●	●	●
Window Shades – Roller, Light Filtering	●	●	●	●	●
ENTERTAINMENT					
Antenna (Radio) – Roof-Mounted	●	●	●	●	●
C.B. Prep Kit – Antenna, Coax Wiring, 12-V Power Connection	○	○	○	○	○
CD Multi-Disc Changer – w/Radio Exchange	○	○	○	○	○
CD Single-Disc Player – w/Radio Exchange	○	○	○	○	○
Entertainment Center (Patio) – DC Receptacle, 110-V Outlet, TV Jack, Radio Antenna, AM/FM Radio, Cassette Deck, Speakers (2), Pull-Out Table	○	○	○	○	○
Inverter 110-V for TV/VCR	○	○	○	○	○
Stereo Power Switch – For Main or Auxiliary Battery Use	●	●	●	●	●
Stereo System – Rear	○	○	○	○	○
Stereo w/Digital Clock (Cab) – Deluxe Electronic Tune AM/FM/ Cassette Deck w/Auto Reverse, Seek Feature, Speakers (4)	●	●	●	●	●
Telephone Input	●	●	●	●	●
TV (9" Color) w/Remote – in Bedroom	○	○	○	○	○
TV (13" Color) w/Remote – in Bedroom	○	○	○	○	○
TV (19" Color) & VCR w/Remote – Switching System, Cabinet Exchange	○	○	○	○	○
TV (19" Color) w/Remote – Cabinet Exchange	○	○	○	○	○

- Standard
- Optional

	31RQ	33RQ	34RA	37RW	35RQ-P
TV Enhancement Package – Antenna (Amplified), DC Receptacles (2), Interior Jacks (2), Coax Wiring, Cable Input, Exterior Antenna Jack, TV Cabinet or Stand	●	●	●	●	●
INTERIOR					
Cabinets – Wood Framed Doors w/Wood Inserts	●	●	●	●	●
Carpeting w/Pad – Stain Resistant w/Scotchgard™ Protector	●	●	●	●	●
Ceiling – Padded Vinyl Headliner	●	●	●	●	●
Ceiling Lights, Lamp(s) – Decorator Style, Wall-Mounted in Lounge	●	●	●	●	●
Ceiling Lights – Fluorescent (4)	○	○	○	○	○
Ceiling Vent – Non-Powered, Galley	●	●	●	●	●
Ceiling Vent – Powered w/Remote Switch, Bathroom	●	●	●	●	●
Clock – Decorator Style, and Framed Picture(s)	●	●	●	●	●
Color Themes (Interior) – Choice of Provence (Blue), Rosewood (Burgundy/Cream), Travertine (Taupe), all w/Choice of Pickled Ash or Salem Cherry Woodgrain	●	●	●	●	●
Vacuum Cleaner (Central) – 30' Hose, Tools, Turbine Power Brush	○	○	○	○	○
Washer/Dryer Combination				○	○
Windows – Tinted w/31% Light Transmittal	●	●	●	●	●
Windows – Dual-Pane, Thermo-Insulated				○	○
GALLEY					
China Closet			●		
Coffee Maker	○	○	○	○	○
Cutting Board (Slide Out), Silverware Tray, Waste Basket	●	●	●	●	●
Dishwasher* – Built in under Counter				○	○
Flooring (Planked)	○	○	○	○	○
Table and 4 Chairs	○	○	●	●	●
Icemaker*				○	○
Light – Decorative (Dinette), Fluorescent (over Sink)	●	●	●	●	●
Microwave Oven	●	●	●	●	●
Microwave/Convection Oven	○	○	○	○	○
Pantry		●			
Range Hood – w/Light, Powered Vent	●	●	●		
Range Hood – w/Light, Ductless Fan				●	●
Range w/Large Glass-Doored Oven – 3-Burners (1 High Output), Range Cover	●	●	●	●	●
Range Top w/Storage Below – 3-Burners (1 High Output), Range Cover	○	○	○	○	○
Refrigerator/Freezer – Large, Double-Door, Flush Mounted	●	●	●	●	●
Refrigerator/Freezer – Large Double-Door, Icemaker	○	○	○	○	○
Sink (Double) – Stainless Steel, Recessed w/2 Covers (Countertop Materials)	●	●	●	●	●
Spice Rack	●	●			
Towel Rack	●	●	●	●	●

- Standard
- Optional

	31RQ	33RQ	34RA	37RW	35RQ-P
Utility Tray – Tip Out	●	●		●	●
Ventilator Fan	○	○	○	○	○
Water Purification System – Everpure®	●	●	●	●	●
BEDROOM					
Bed Lifts – Gas Springs (Prop Rods 35RQ), Bedspring(s), Pillows, Pillow Shams, Throw Pillows, Lamps – Decorator Style, Wall-Mounted, Mattress Sealy® – Innerspring w/Non-Slip Mat, Access to Storage below	●	●	●	●	●
Mirror – Wall-Mounted (Back Wall)					●
Robe Hook*	●	●			●
Wainscoting w/Chair Rail	●	●	●	●	●
Wardrobe – Door Mirror, Carpeted Floor, Clothes Rod, Shelf, Auto-Light on 37RW & 35RQ, Drawers (NA on 31RQ)	●	●		●	●
BATHROOM					
Clothes Rod – Removable	●	●	●		
Floor Covering (Carpet w/Pad)				●	●
Floor Covering (Vinyl)	●	●	●		
Lavatory Cabinet, Medicine Cabinet w/Mirrored Doors, Makeup Lights (4 Bulb) – Two Sets on 37RW, 35RQ	●	●	●	●	●
Linen Cabinet				●	●
Mirror – Wall-Mounted			●		
Mirrors (2) – Wall-Mounted	●	●			
Shower – Flexible Shower Head	●	●	●	●	●
Shower Door (Folding)	●	●			
Shower Door (Sliding Glass - 2 Panel)			●		
Shower Door (Tinted Glass)				●	●
Sink – Large Oval, Ledge Back, Skylight (Tinted), Tissue Holder (Surface Mount), Porcelain Toilet w/Sprayer (Round Bowl)	●	●	●	●	●
Toilet* w/Sprayer – Porcelain (Elongated Bowl)	○	○	○	○	○
Towel Bar	●	●			
Towel Rack (3)				●	
Towel Ring			●	●	●
EXTERIOR					
Awning (Acrylic) – Contact Dealer for Model Availability				○	○
Awning Rail	●	●	●	●	●
Bumpers – Reinforced w/Steel	●	●	●	●	●
Entrance Door w/Screen Door – Latch & Deadbolt Locks, Electric Step w/ Door Jamb Switch	●	●	●	●	●
Entrance Door Overhead Storage	●	●	●	●	●
Fuel Fill Door – Lockable, New Graphics, Holding Tanks (Heated), Outlet – 110 V, Curbside, Sewer Hose & Storage Compartment, Wash Station – Pull-Out w/Water Pump Switch	●	●	●	●	●
Ladder, Mud Flaps (Rear), Porch Light (Interior Switch)	●	●	●	●	●

- Standard
- Optional

	31RQ	33RQ	34RA	37RW	35RQ-P
Stepwell Light – Interior Switch	●	●	●	●	●
Storage Compartments – Floor & Side Lining, Steel Construction, Lockable Doors w/ Lights	●	●	●	●	●
Tire Tools – Wrench, Leverage Bar, Tire Hoist Rod	●	●	●	●	●
Trailer Towing Package w/Class II Hitch	●	●	●	●	●
Trunk*	●	●			
Undercoating	○	○	○	○	○
Wheel Covers	●	●	●	●	
Wheel Liners – Stainless Steel	○	○	○	○	●
SYSTEMS					
Air Conditioner (Central) – Remote Cooling Unit, Ceiling Distribution	●	●	●	●	●
Batteries (2) – Deep Cycle RV, in Stepwell Compartment	●	●	●	●	●
Electrical Control Center – 110-V AC/12-V DC, 40-Amp. Remote Converter/Charger, AC/DC Circuit Breakers, 30-Amp. Power Cord (55-Amp. Converter on 37RW & 35RQ)	●	●	●	●	●
Furnace – Ducted, Low Profile, Electronic Ignition, 35,000-BTU	●	●	●		
Furnace – Ducted, Low Profile, Electronic Ignition, 40,000-BTU				●	●
Furnace Ducting System Rigid, – below Floor	●	●	●	●	●
Generator Prep Kit – Fuel Line, 12-V Wiring, Start/Stop Switch, Hourmeter Gauge	●	●	●	●	●
Generator* – 6,500-Watt, LP			○		○
Generator – 7,000-Watt, Gas	○	○	○	○	
Generator – 7,500-Watt, Water Cooled Diesel					○
Automatic Changeover Switch For Generator/Shoreline	●	●	●	●	●
Leveling System* by HWH® – 4-Point, Automatic Controls (Front & Rear)	○	○	○	○	○
Leveling System – (Front Only)	○	○	○	○	
LP Tank – Permanent Mount w/Gauge	●	●	●	●	●
Monitor Panel – Water, Holding & LP Tank Levels, Battery Condition Gauge, Water Heater Ignition Switch, Water Pump Switch, Generator Start/Stop Switch, Generator Hourmeter Gauge, Located in Galley	●	●	●	●	●
Power Cord – 50-Amp., Mandatory w/Some Options	○	○	○	○	○
Water Fill – Pressurized City Hook-Up w/Diverter Valve, Lockable Door	●	●	●	●	●
Water Heater – 6-Gal., Electronic Ignition	●	●	●	●	●
Water Heater (Motoraid) & Rear Automotive Heater	○	○	○	○	
Water Heater Winterization By-Pass Valve	●	●	●	●	●
Water Pump (Demand) – 3 Switches	●	●	●	●	●
SAFETY					
Interior and Exterior Assist Handles, Interior Assist Strap, Carbon Monoxide Detector/Alarm, Fire Extinguisher (10-B.C.), Ground Fault Interrupter, LP Leak Detector/Alarm, Smoke Detector/Alarm, Escape Window, Laminated Safety Glass Windshield w/Shade Band	●	●	●	●	●

*The height of each model is based on the curb weight of a typically equipped unit on the standard chassis (top of rack). The actual height of your vehicle may vary by as much as 2" depending on chassis or equipment variations.

*Not all options available in combination. See dealer for details. Winnebago Industries' continuing program of product improvement makes specifications, equipment, model availability and prices subject to change without notice.

V E C T R A

For VECTRA sales and service, contact:

