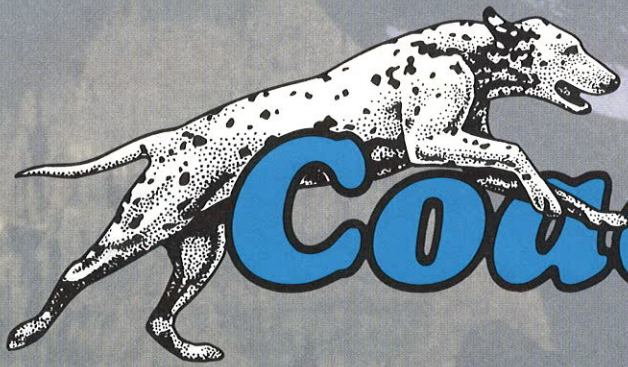


1997 CATALINA & LEPRECHAUN CLASS C MOTORHOMES



Coachmen®

**COACHMEN MINI'S
ALWAYS LEAD THE WAY**

**GREAT NEW FEATURES
FOR '97**

**TWO-YEAR
STRUCTURAL
WARRANTY**

**FREE!
OWNER'S CLUB
MEMBERSHIP &
BENEFITS!**



THE FAVORITE CHOICE

Class C motorhome customers everywhere know that coachmen is the leader in mini-home selection with floorplans to suit just about any need. And all Coachmen minis provide the utmost in livability features and design. We conceived and introduced the first wide-body Class C in 1991, as well as the fabulous forward-facing lounge.

Though other brands have scurried to copy us, why settle for an imitation when you can have the original?

From the economical Catalina Sport to the value-packed Leprechaun, we're confident that you can't find a better mini-home for its price.

Here's why!

BEAUTY AND A LOT MORE!

As you step into a Catalina Sport and Leprechaun, your first impression is of pleasing beauty and soothing comfort.

Our designers work diligently to insure *lasting* appeal, because at Coachmen we believe that beauty *should be* "more than skin-deep."

- Coachmen selects only fabrics that are wear-rated as "Heavy Duty." This means that Coachmen fabrics have been tested for durability beyond 15,000 *double rubs* (in and out action) to simulate heavy usage. A chair in the average American home is typically subjected to only 3,000 double rubs *per year*...

- Beneath its heavy-duty fabrics, Coachmen uses high-density foam in its furniture and cushions to protect against premature compression and breakdown.

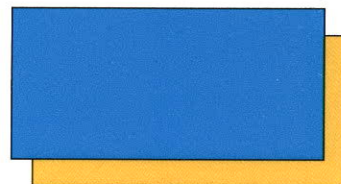
- Coachmen uses only man-made, continuous filament, fiber carpeting that is Teflon treated for easy cleaning. For long term wear, the carpet padding is equally important.



ABOVE: The 305 Mid Bath Leprechaun has all the comforts of home and provides plenty of room for great leisure living. Shown in Green Mountain.



ABOVE: Golden Cherry cabinetry accents the eye-pleasing interior of the 240 Wide Body Catalina Sport. Pictured in Copper Canyon.



FROM COAST TO COAST



- Window sizes and configurations are chosen with care, to give you enormous panoramic views in the living areas and important ventilation in the sleeping areas with multi-pane jalousie windows.

- Window treatments are designed for beauty, flexibility of lighting and ventilation and, most of all, privacy.

LEFT: Beautiful etched glass, carefully coordinated decor and attractive semi trackless carpet combine to give this 305 Mid Bath Leprechaun a very special appeal. Shown in Pebble Beach decor.

BELOW: This Green Mountain Bedroom is designer-inspired with features such as a quilted bedspread and a deluxe 312 coil innerspring mattress.



Coachmen uses a 3/8" pad that is 70% denser than the industry norm, with an 80 lb. ILD (Indentation Load Deflection) versus the 33 lb. ILD most commonly used.

- All interior soft goods are treated for fire retardancy.

- Cabinet doors feature hardwood frames. Unlike other brands that use a glued MDF construction, Coachmen's cabinet fronts are real laminated wood, solidly screwed and secured to reinforced sidewalls.

Leprechaun Decors:

Green Mountain

Blue Ridge

Pebble Beach

Catalina Sport Decors:

Silver Aspen

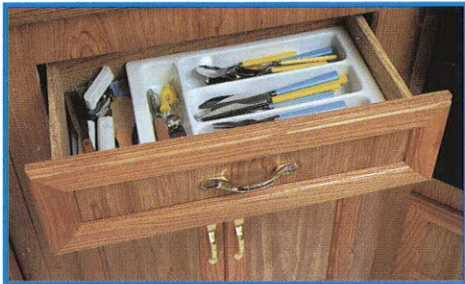
Blue Cascade

Copper Canyon



FEATURES GALORE!

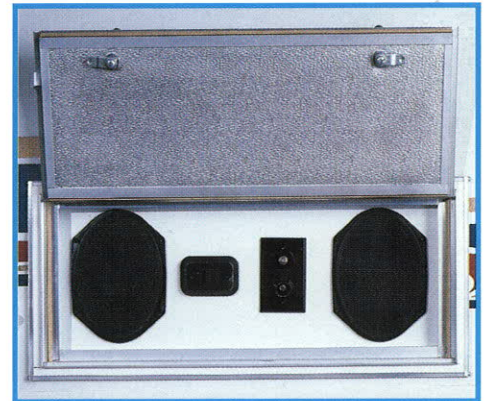
A complete photo album would be required to fully display the many features and innovations of Coachmen's affordable mini-homes. Here are just a few.



▲ Another Coachmen innovation is the fantastic under-sink silverware and utensil drawer.



▲ Where possible, we've designed a pantry into the back of the Leprechaun dinettes. What a great idea!



▲ Relax outdoors with the optional entertainment center, with speakers and TV jack.



◀ The 285 Queen Bed Catalina Sport, pictured in Blue Cascade, is also available with an optional twin bed floorplan.

AND MORE FEATURES!



▲ Step wells feature rubber step treads, and a rare Class C option: An electric entrance step with a dash warning light.



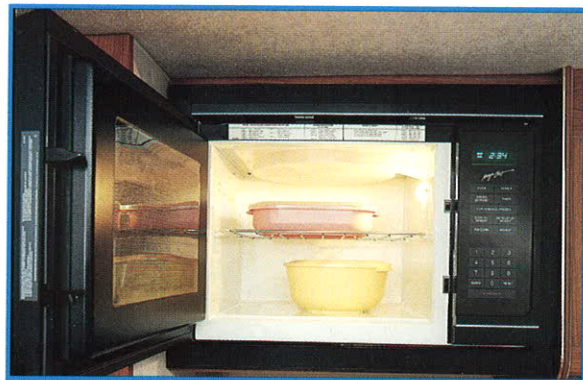
▲ Attractive and functional exterior mirrors are optional on all Ford Catalina Sports and Leprechauns.



▲ For your driving comfort and security, only Coachmen provides power windows and door locks—standard on all Ford models.



▲ You'll love the Leprechaun's new optional Exterior Storage Drawer! Enormous, felt-lined trays on steel rollers glide out at the touch of your fingertips. Another innovation from Coachmen!



▲ The optional microwave oven boasts a huge 1.3 cu.ft. interior space, making preparation of large dishes a breeze.



▲ The overhead entertainment center is a very popular option in the Leprechaun.



▲ This massive “warehouse” rear pass through storage compartment is standard on all Leprechauns and features a handy sliding platform to transfer cargo from side to side.



▲ With Coachmen, a towing hitch is an available option on all models.



▲ Our spacious refrigerators feature a convenient interior light, and a handy freezer shelf.

The three-burner range ► with a high-output front burner has space for large pots and enough capacity to quickly heat the contents. All drawers, such as this large pots and pans storage drawer feature metal and caster slide systems for superior operation.



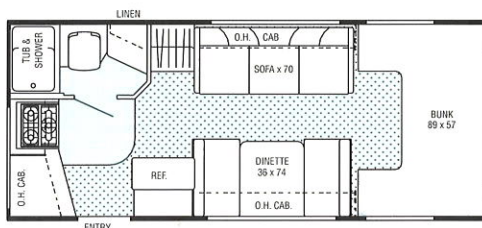
FLOORPLANS & TECHNICAL SPECIFICATIONS



1997 CATALINA & LEPRECHAUN CLASS C MOTORHOMES

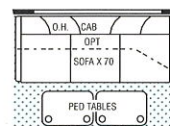
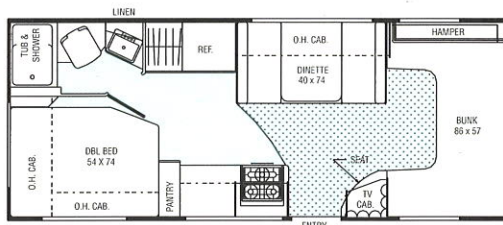
195RK

REAR KITCHEN
CATALINA



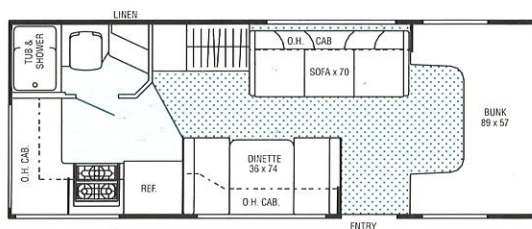
210CB

CORNER BATH
CATALINA
WIDE BODY



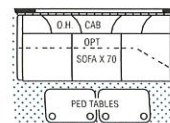
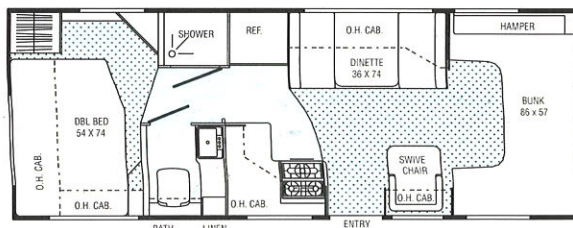
220RK

REAR KITCHEN
CATALINA



240WB

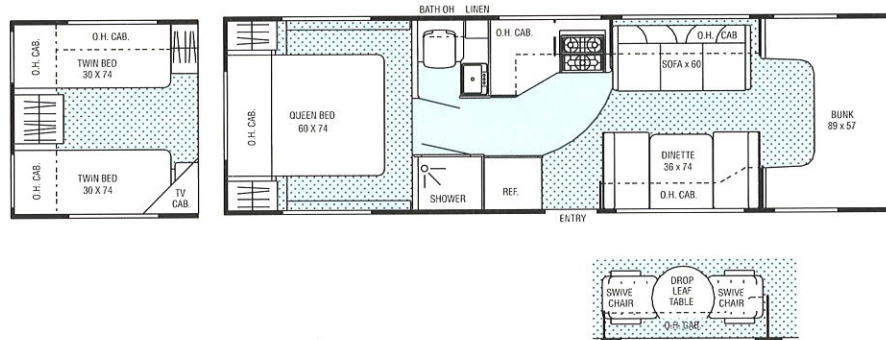
WALK THRU BATH
CATALINA
WIDE BODY



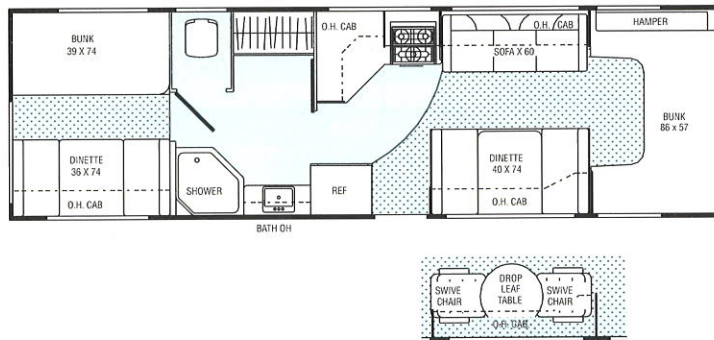
Indicates Carpeting

CATALINA & LEPRECHAUN CLASS C FLOORPLANS

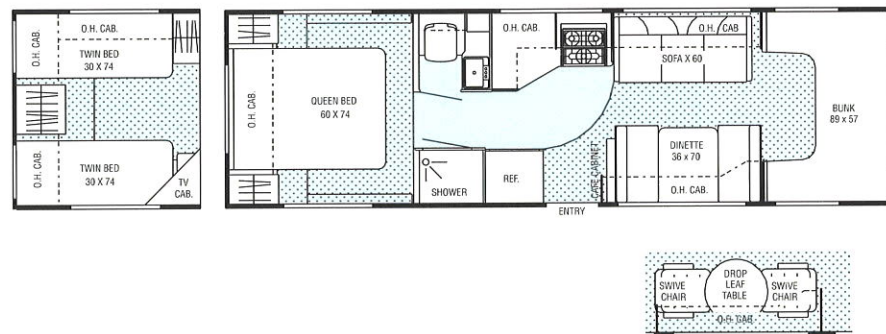
285^{QB} QUEEN BED CATALINA



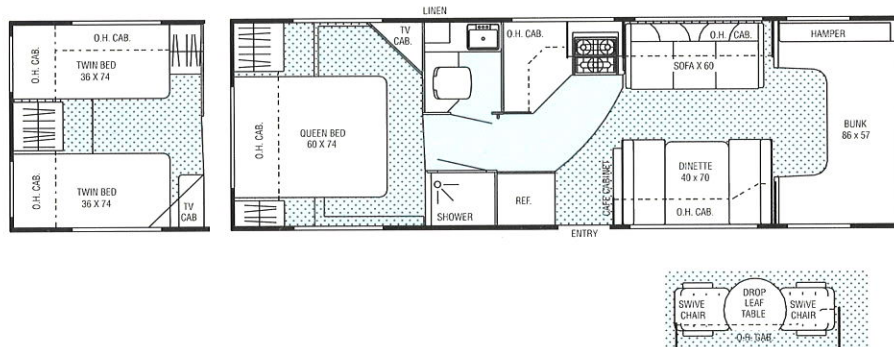
303^{BH} QUEEN BED CATALINA



278^{RF} RAISED FLOOR LEPRECHAUN

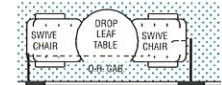
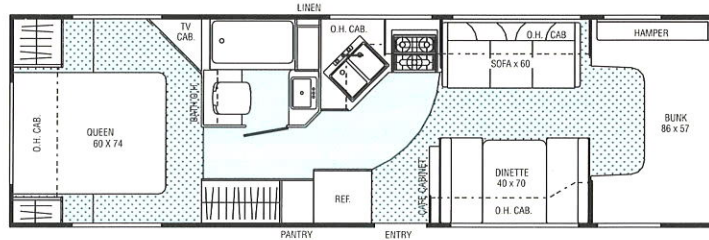
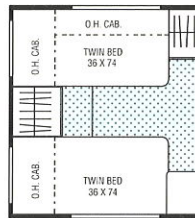


290^{RF} RAISED FLOOR LEPRECHAUN WIDE BODY



CATALINA CLASS C SPECIFICATIONS

305MB
RAISED FLOOR
LEPRECHAUN
WIDE BODY



	Catalina										Leprechaun				
	195 RK	210 CB		220 RK		240 WB		285 QB		303 BH	278 RF		290 RF		305 MB
Chassis	FORD	FORD	CHEVY	FORD	CHEVY	FORD	CHEVY	FORD	CHEVY	FORD	FORD	CHEVY	FORD	CHEVY	FORD
Chassis Model	E-30	E-30	GMT 600	E-30	GMT 600	E-30	GMT 600	E-40	GMT 600	E-40	E-40	GMT 600	E-40	GMT 600	E-40
Engine Size	5.8L	7.5L	7.4L	7.5L	7.4L	7.5L	7.4L	7.5L	7.4L	7.5L	7.5L	7.4L	7.5L	7.4L	7.5L
Wheel Base	138"	158"	159"	158"	159"	158"	159"	190"	191"	208"	190"	191"	190"	191"	208"
Rear Axle Ratio	4.10	4.10	4.10	4.10	4.10	4.10	4.10	4.63	4.10	4.63	4.63	4.10	4.63	4.10	4.63
Tire Size Δ	(1)	(1)	(1)	(1)	(1)	(1)	(1)	(2)	(1)	(2)	(2)	(1)	(2)	(1)	(2)
GVWR (Pounds)	10,500	11,500	12,300	11,500	12,300	11,500	12,300	14,050	12,300	14,050	14,050	12,300	14,050	12,300	14,050
CW (Pounds)	8,039@	9,226	8,926@	8,913	8,625@	9,565	9,265@	10,406@	9,806@	11,017@	10,620@	10,020@	10,827	10,227@	11,217
GAWR Front (Pounds)	3,800	4,200	4,300	4,200	4,300	4,200	4,300	4,600	4,300	4,600	4,600	4,300	4,600	4,300	4,600
GAWR Center/Rear (Pounds)	7,500	7,810	8,600	7,810	8,600	7,810	8,600	9,450	8,600	9,450	9,450	8,600	9,450	8,600	9,450
GCWR (Pounds)	13,000	18,500	17,000	18,500	17,000	18,500	17,000	20,000	17,000	20,000	20,000	17,000	20,000	17,000	20,000
Exterior Length	21'8"	23'8"	24'1"	23'8"	24'1"	25'2"	25'7"	29'	29'5"	30'6"	29'	29'5"	29'	29'5"	30'6"
Exterior Clearance Height*	10'	10'	10'	10'	10'	10'	10'	10'	10'	10'	10'	10'	10'	10'	10'
Interior Height	6'10½"	6'10½"	6'10½"	6'10½"	6'10½"	6'10½"	6'10½"	6'10½"	6'10½"	6'10½"	6'6"	6'6"	6'6"	6'6"	6'6"
Interior Width	7'5½"	8'	8'	7'5½"	7'5½"	8'	8'	7'5½"	7'5½"	8'	7'5½"	7'5½"	8'	8'	8'
Exterior Width	7'9½"	8'4"	8'4"	7'9½"	7'9½"	8'4"	8'4"	7'9½"	7'9½"	8'4"	7'9½"	7'9½"	8'4"	8'4"	8'4"
Fuel Capacity (gal.)	35	55	55	55	55	55	55	55	55	55	55	55	55	55	55
Alternator Amps	130	130	124	130	124	130	124	130	124	130	130	124	130	124	130
Fresh Water Capacity (gal.)	25	40	40	37	37	40	40	38	38	40	44	44	44	44	44
Waste Water Capacity (gal.)	27	35	35	27	27	26	26	26	26	35	35	35	35	35	35
Grey Water Capacity (gal.)	27	35	35	35	35	30	30	30	30	35	33	33	33	33	33
Water Heater Capacity (gal.)	6	6	6	6	6	6	6	6	6	6	6	6	6	6	6
LP Gas Capacity (lb.)	40	40	40	40	40	68	68	68	68	68	85	85	85	85	85
Furnace Rating (x 1000) BTU	18	20	20	20	20	31	31	31	31	31	31	31	31	31	31
Sleeping Positions	4	5	5	4	4	5	5	6	6	7	6	6	6	6	6

* Add 13½" for Roof Air Conditioner @ Estimated at time of printing Δ Tire Size = (1) LT225/75R16D (2) LT225/75R16E

GVWR (Gross Vehicle Weight Rating): The Maximum permissible weight of the unit, including the UVW plus all fluids, cargo, optional equipment and accessories. For safety and product performance, do not exceed the GVWR.

CW (Curb Weight): The weight of the unit without factory or dealer installed options, plus allowance for the weight of full fuel capacity. The "payload capacity" for all other fluids, cargo, occupants, optional equipment and accessories can be determined by subtracting the CW from the GVWR.

GAWR (Gross Axle Weight Rating): The total weight each front/rear axle, suspension and tire system is designed to carry. When loading the unit, care should be taken to balance cargo weight in consideration of the GAWRs.

GCWR (Gross Combined Weight Rating): The maximum total weight of the loaded unit, plus a tow vehicle. This includes the weight of both the unit and tow vehicle, fuel for each, all other fluids, cargo, occupants, optional equipment and accessories.

Wider Widths: Numerous Coachmen floorplans feature the "wide body" design concept, which gives you significantly enhanced interior living space and innovative floorplans.

When making your purchase decision, you should be aware that a few states restrict access on some or all state roads to 96" in width, though special road usage permits are generally available. Vehicles up to 102" in width are permitted on all federal highways, and in the vast majority of states. You may wish to confirm the road usage laws in the states of interest to you before making your purchase decision. If width is of concern to you, we invite you to consider the broad array of other Coachmen models offered in the standard 96" width.

IMPORTANT NOTE: All capacities are approximate, and all dimensions are nominal. Coachmen motorhomes are designed to allow for a wide variety of uses, extended trips with two people or short trips with multiple people. Accordingly, each unit allows ample room for sleeping, seating, fluids and cargo. While the customer is the beneficiary of this design, the customer also bears the responsibility to select the proper combination of passengers, cargo, load, and tow vehicle without exceeding the chassis weight capabilities.

Seat belts should always be worn for passenger safety. Seat belts are provided at most locations to allow convenience in selecting which seat to occupy. However, it is not intended that all seating positions equipped with a seat belt may be occupied while the vehicle is in motion, without regard to other weight factors.

All Coachmen motorhomes are designed to ensure that the number of passengers allowed while the vehicle is in motion will always at least equal the stated sleeping capacity. Though extra seat belts may be provided, for your safety and the proper operation of your vehicle, limit your passengers to the number allowed by the Net Carrying Capacity of your vehicle.

All information contained in this brochure is believed to be accurate at the time of publication. However, during the model year, it may be necessary to make revisions and Coachmen reserves the right to make all such changes without notice, including changes in prices, colors, materials, equipment and specifications, as well as the addition of new models and the discontinuance of models shown in this brochure. Therefore, please consult with your Coachmen dealer and confirm the existence of any materials, design or specifications that are material to your purchase decision.

CATALINA & LEPRECHAUN STANDARDS & OPTIONS

STANDARD FEATURES CATALINA & LEPRECHAUN

INTERIOR APPOINTMENTS

- Golden Cherry Cabinets
- Residential Metal Drawer Glides
- Linoleum in Kitchen & Bath
- Night Shades - Coach (Leprechaun)
- Mini Blinds - Coach (Catalina)
- Mini Blinds - Bedroom
- Radius Slider Windows
- Radius Jalousie Windows-bedroom (Except 220RK)
- Jack Knife Sofa (Catalina 220RK, 285QB, 303 BH & Leprechaun)
- Side Dinette (Catalina)
- Dinette Back With Storage (Leprechaun)
- Reclining Swivel Pilot & Passenger Seats (Leprechaun)
- Reclining, Pilot Seat - Chevy
- Reclining, Swivel Pilot Seat - Ford Only
- Reclining, Swivel Passenger Seat - Ford Only

INTERIOR EQUIPMENT

- AM/FM Cassette with Four Speakers
- TV Antenna Ready (Catalina)
- TV Antenna and Rotor Package (Leprechaun)
- LP Leak Detector
- Smoke Detector
- Carbon Monoxide Detector
- Fire Extinguisher

GALLEY

- Microwave Ready
- 3-Burner (High Output) Range Top w/Pots & Pans Drawer
- Power, Lighted Range Hood
- Flush Mount, Double Door Refrigerator
- Refrigerator Light
- Monitor Panel
- Stainless Steel Kitchen Sink (Catalina)
- Double Stainless Steel Sink (Leprechaun)

SLEEPING

- Queen Bed (Leprechaun & Catalina 285QB)
- Corner Double Bed (210CB, 240WB)
- Cabover Bunk
- Bunk Beds (303BH)
- Deluxe Innerspring Mattress 312 Coil (Except 220RK)
- Bedspread & Pillow Shams (N/A 220RK)
- Privacy Drape - Lower Cab
- Privacy Drape - Bedroom (Except 220RK)

ELECTRICAL/HEATING/AC

- 30 Amp. Power Cord
- 110/12-Volt Power Converter (Catalina)
- 40 Amp. Power Converter (Leprechaun)
- GFI Circuit
- Battery Disconnect (Leprechaun)
- Outside Receptacle
- Patio Light
- 20,000 BTU E.I. Furnace (210CB, 220RK)
- 31,000 BTU E.I. Furnace (Leprechaun & 240WB, 285QB, 303BH)
- Wall Mounted Thermostat
- Prewired for Roof Air Conditioner (Leprechaun)
- Ducting for Air Conditioner

BATH AND WATER

- Power Bath Vent
- 6-Gallon El Water Heater
- One-Piece ABS Tub Surround (Leprechaun)
- Pump Switch at Termination (Leprechaun)
- Demand Water Pump
- Lavatory Sink (Catalina)
- Medicine Cabinet
- Closet Rod - Shower (Leprechaun)

AUTOMOTIVE/EXTERIOR

- Automotive Undercoating
- 55-Gallon Fuel Tank (Leprechaun)
- Deluxe Chassis Package
- Cruise Control
- Tilt Wheel
- Power Windows and Locks
- Dash Air Conditioning
- Painted Mirrors with Convex
- Chrome Front Bumper
- Radial Tires
- Full Metal Wheel Covers
- Laminated Roof, Floor & Sidewalls
- Crowned Rubber Roof
- Luggage Rack and Ladder
- Aluminum Running Boards
- Single Entrance Step (Catalina)
- Rubber Entry Step Tread
- Dead Bolt Lock Entrance Door (Catalina)
- Dead Bolt Locks (Leprechaun)

OPTIONAL FEATURES CATALINA

- Residential Dinette w/2 Chairs (285QB, 303BH)
- Jack Knife Sofa (210CB, 240WB) (Includes Pedestal Table)
- Privacy Drape - Cab Over
- Deluxe AM/FM Cassette Stereo
- TV Antenna and Rotor Package
- Cable TV Jack
- Twin Bed w/Wardrobe (285QB)
- 3-Burner (High Output) Range w/Oven
- Residential Size Microwave Oven - 1.3 Cu.Ft.
- One Piece ABS Tub Surround
- Fantastic Three-Speed Roof Vent
- Front Cab Overhead Window
- 13,500 BTU Roof A/C
- 4.0 KW LP Vapor Generator (Includes Generator Prep) (Available w/Diesel Engine Option Only)
- 4.0 KW Gas Generator (Includes Generator Prep) (Not Available with Diesel Chassis Option)
- Emergency Start Switch
- Generator Ready
- Battery Disconnect
- Power Entrance Step - Single
- Spare Tire Kit
- Exterior Mirror Upgrade - Ford Only
- Air Assist Suspension - Ford Only
- Towing Hitch
- Awning (Not Available on Wide-Body Units Shipped to Canada)
- Diesel Chassis - 6.5 L. Engine - Chevy
- Diesel Chassis - 7.3 L. Engine - Ford
- CSA Uplift
- Canadian Motorized Compliance (Mandatory in Canadian Provinces Not Requiring CSA Uplift)

OPTIONAL FEATURES LEPRECHAUN

- Linoleum Kitchen Flooring
- Privacy Drape - Cab Over
- Twin Bed w/Full Wardrobe
- Residential Dinette w/2 Chairs
- Deluxe AM/FM Cassette Stereo
- Exterior Entertainment Center
- Front Cabover Entertainment Center (Includes 19" Color TV and VCP Video Player)
- Cable TV Jack
- 14" Color TV - Coach
- 3-Burner (High Output) Range w/Oven
- Residential Size Microwave Oven - 1.3 Cu.Ft.
- Fantastic Three-Speed Roof Vent
- Front Cabover Window
- High Profile 13,500 BTU Ducted Roof A/C
- 13,500 BTU Roof Air Conditioner
- 4.0 KW LP Vapor Onan Generator; Includes Generator Prep (Available with Diesel Engine Option Only)
- 4.0 KW Gasoline Onan Generator; Includes Generator Prep (Except with Diesel Engine Option)
- Emergency Start Switch
- Generator Prep
- Battery Disconnect
- Power Entrance Step
- Stainless Steel Wheel Inserts
- Spare Tire Kit
- Exterior Mirror Upgrade (Ford Only)
- Air Assist Suspension - Ford Only
- One Exterior Slide Drawer Storage (305 MB)
- Towing Hitch
- Awning (Not Available on Wide Units Shipped to Canada)
- Diesel Chassis - 6.5 L. Engine - Chevy
- Diesel Chassis - 7.3 L. Engine - Ford
- California Emission Control Package
- CSA Uplift
- Canadian Motorized Compliance (Mandatory in Provinces Not Requiring CSA Uplift)



WHAT YOU CAN'T SEE USUALLY COUNTS THE MOST.

Coachmen believes its owners are entitled to quality and sturdy construction, even if those features are hidden from view. Hidden quality does cost more, and the uneducated buyer may not always understand the difference. But, those differences can be critical to your long-term satisfaction and future resale value.

Coachmen builds a superior mini-home, for reasons that may not always be easy to see, but are very easy to appreciate down the road.

WE START WITH A STRONG FOUNDATION

When you are riding in a mini-home, you want to be confident that you are on a strong foundation. Coachmen's is the best.

• Steel Floor System

Every floor starts with a welded 1-1/2" tubular steel foundation that surrounds the full coach perimeter and is cross-supported with welded tubular steel floor joists.

• 2" Laminated Floor

Our 2"-thick, steel-reinforced floors have three layers that are pressure-laminated for superior strength. The layers include, water-resistant staggered 5.2 lauan on the surface, dense polystyrene R-8 foam insulation, and a galvanized underside. The floor is then secured to the frame with Grade #5-3-1/2" Zinc-plated 3/8 bolts, self-locking washers and 3/8" Hex-nuts.

• Basements

Those models with basements are built with a pre-formed steel truss system. The basements are heated, as are the enclosed holding tanks.

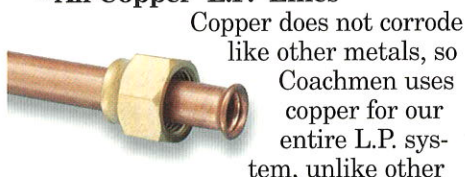
• Automotive Undercoating

All Coachmen mini-homes are fully-undercoated (except the chassis exhaust system). We use premium Kendall Sound & Seal automotive undercoating for your complete protection.

SAFETY COMES FIRST

In addition to tremendous structural strength, Coachmen provides for your safety in many hidden ways:

• All Copper L.P. Lines



Copper does not corrode like other metals, so Coachmen uses copper for our entire L.P. system, unlike other

brands that typically switch to black steel pipes under the floors. We run our copper lines, protected by a plastic sleeve, through the frame, where they are protected from road damage.

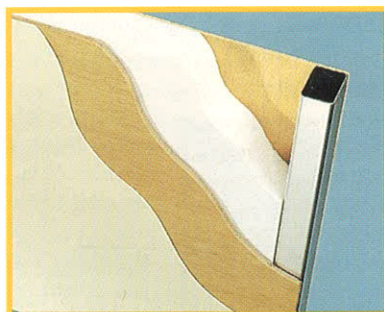
• Safety Equipment

All Coachmen mini-homes are equipped with an L.P. leak alarm, carbon monoxide detector, smoke detector, fire extinguisher and seat belts.

SURROUND YOURSELF WITH STRENGTH

• Aluminum Cage Construction

Our sidewalls and roofs are reinforced with a heliarc-welded aluminum cage, with screw plates at the joints for added strength.



• Unique Dual Lamination

Process- Coachmen has developed a unique lamination process for construction of walls, roofs and floors. Utilizing the latest technology, this environmentally friendly process combines a pressure urethane vacu-

um-bond system along with a urethane reactive hot melt system. The dual lamination system produces structural components with superior strength, rigidity and durability.

Our 2" coach walls are thicker than most brands, and consist of four layers: Interior lauan paneling with laminated vinyl, 1/2" block polystyrene R-8 foam insulation, 1/4" lauan and exterior gel-coated fiberglass for easy maintenance. All window openings are framed in the wall to aid in the prevention of water penetration into the coach or sidewall.

• 2-1/2" Thick Crowned Roof

Coachmen's 2-1/2" thick laminated crowned roof prevents water puddles and resulting leaks. The outer industrial grade seamless rubber roof is supported by crowned aluminum rafters, lauan outer panels, dense polystyrene R-8 insulation and interior lauan with laminated vinyl.

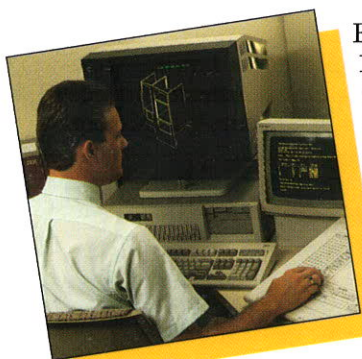


CRITICAL WEIGHT FACTORS

As experienced RV'ers know, the chassis Gross Vehicle Weight Rating (GVWR) is extremely important for engine performance, handling, automotive durability, and cargo and towing capacity.

Coachmen takes vehicle weights very seriously in our design, and, therefore, we use upgraded chassis where necessary to provide you with reasonable capacity. We urge you to make a careful weight analysis as part of your purchase decision.

UP-FRONT DESIGN FOR LONG TERM COMFORT.



Founded in 1964, Coachmen is one of the oldest, continuous producing manufacturers of recreational vehicles. A secret of our

success is our commitment to the continuous improvement of our products.

With over three decades of experience, we have learned that quality must be designed and built *in to* the products, up front. Combining our experience and expertise with the latest technological advances, we are able to prevent many problems before they arise, through proper analysis and testing.

DESIGN & ANALYSIS

Unlike most companies, Coachmen uses computerized technology for much more than simple drafting applications.

Through significant capital and manpower investments, Coachmen uses computers to see that everything fits—up front—so we can minimize gimp, trims and other “cover-up” techniques seen so often in other brands.

We also use the computer for advance testing.

Weight testing is performed on every new model. Before a floorplan is approved, we know the approximate weights, including dry and loaded, front and rear axle weights and even side-to-side weights which affect drivability. After a model is built, the computer analysis is manually verified.

Another important use of the computer is Coachmen's unique utilization of **Finite Element Analysis**. This technique, based on computer modeling, enables Coachmen to pre-

dict, and avoid, many problems caused by inappropriate stress.

Simply stated, we try to anticipate and solve problems before they occur.

LEAK PREVENTION

Due to the complexity of the product, compounded by road vibration, water leaks can be a problem. Coachmen's quest is to eliminate this frustrating and potentially damaging problem.



Extra care is taken to

prevent exterior leaks. Every outside seam at the roof, floor and sidewalls—is wrapped, sealed and secured. All roof and sidewall openings receive framing reinforcement, and are sealed.

Finally, every unit is tested for leaks in a high-pressure rain chamber, designed to simulate a driving rain, not just a spring shower.

PERFORMANCE TESTING

We believe it is our job to adequately test our products, before they reach our customers.



Coachmen subjects its new models to a myriad of advance tests, before introduction to the customer. Rigorous road tests, sometimes up to 15,000 simu-

lated miles, are performed on actual production units, to verify computer modeling. Studies are made of structural integrity, stress analysis, cabinetry durability, weight loading, vibration analysis and handling.

There can be little doubt that Coachmen has superior quality—by design.

BUYER'S CHECKLIST

To help you make an informed purchase decision you'll enjoy for many years to come, refer to this list of Coachmen features. Please compare us to the competition!

- ✓ Steel-framed floor
- ✓ Full-dimension frame extensions
- ✓ Automotive undercoating
- ✓ 2" Vacuum-Bonded floor
- ✓ R-8 insulation factor
- ✓ 2" Vacuum-Bonded walls
- ✓ Welded aluminum “Cage”
- ✓ 2-1/2" crowned and laminated roof
- ✓ Industrial grade rubber roof
- ✓ Reliable weight factors
- ✓ Slider and jalousie windows
- ✓ Finished and sealed exterior storage compartments
- ✓ Name-brand appliances
- ✓ 55-gallon fuel tank (Ford's)
- ✓ Clamp ring windows in framed openings
- ✓ Heavy-duty upholstery
- ✓ Luxury padded cab door panels
- ✓ Furniture with steel frames
- ✓ Linoleum in kitchen and bath
- ✓ Semi-trackless carpet
- ✓ 312-Coil Innerspring Mattress
- ✓ All interior soft goods treated for fire retardancy
- ✓ Bed-Lift Storage system
- ✓ Mini blind window treatments (Catalina)
- ✓ “Even Cool” ducted air conditioning option (Leprechaun)
- ✓ Silverware and Pots & Pans Drawers
- ✓ Sturdy screwed & glued cabinet construction
- ✓ Residential drawer glides
- ✓ Power windows & door locks
- ✓ Basements with steel “bridge truss” design
- ✓ Enclosed and heated tanks & “NO MESS” termination system (basement models)
- ✓ Water-heater by-pass system
- ✓ Extensive safety equipment
- ✓ Two-Year Structural Warranty

LONG TERM ENJOYMENT

A WARRANTY TO COUNT ON.

BUCKSTOPPER WARRANTY

We work very hard to see that our products out-perform your expectations. But, should something go wrong with the workmanship or materials during the warranty period, we will fix it. As the saying goes, the buck stops here.

Your Owner's Registration Card and our famous Buckstopper Warranty are your passport to worry-free travel. Throughout the United States and Canada, our network of over 300 independent dealers stands ready to provide you with courteous, dependable service.



TWO-YEAR STRUCTURAL WARRANTY

We are very confident about our products, for reasons explained in this brochure. Our owners share in our confidence, with Coachmen's exclusive TWO-YEAR LIMITED STRUCTURAL WARRANTY. Only with Coachmen do you receive extended peace of mind and warranty coverage

for your floor, ceiling assembly and any laminated structural components.

TRANSFERABLE WARRANTY

Your Buckstopper Warranty may be transferred to a subsequent owner for a small registration fee, if you sell your coach during the term of your one-year Buckstopper Warranty. This feature greatly enhances the resale value of your Coachmen product. (Sorry, the Extended Limited Structural Warranty may not be transferred.)

When making your purchase decision, you should select a company you can count on, with a warranty you can depend on. **Nobody protects you better than Coachmen...for the long haul!**

See your Coachmen dealer for complete details on our generous warranty program.

FRIENDS & FUN FOR LIFE.

Your purchase of a Coachmen recreational vehicle qualifies you for a **free, one-year membership** in the International Coachmen Caravan, one of the nation's largest RV clubs. Consisting of over 10,000 member families, the Coachmen Caravan was

formed in 1966 to help our owners enjoy RV ownership to the fullest.

With Coachmen, unlimited opportunities exist for you and your family to form lifelong friendships; improve and share your unique talents, skills and crafts; be active in running your

club; and exchange ideas, information and helpful hints—all these, plus the many benefits outlined below, are uniquely yours through the International Coachmen Caravan.

INCREDIBLE MEMBERSHIP BENEFITS!

In addition to automatically expanding your circle of friends, your Caravan membership brings you a multitude of benefits:

- Free \$5,000 Accidental Death and Dismemberment Insurance policy, with additional policies available for \$5 a year.
- Emergency road service and RV insurance at low rates.
- Free trip-planning service.
- 10% Discounts at over 2,500 campgrounds in the U.S. and Canada.
- Free annual Campground Directory.
- Hassle-free group travel to popular destinations.

- Free lost-key return service.
- Organized campouts, meetings and parties.
- Free subscription to COACHMEN CAPERS, the club's quarterly magazine.
- Annual International Rally Week.
- Free I.D. card, Caravan key ring, vehicle decals and I.D. numbers.
- A Coachmen Caravan MasterCard with no annual fee and low interest.
- Discounts on club clothing, accessories, film developing and selected RV publications.



THE COMPANY

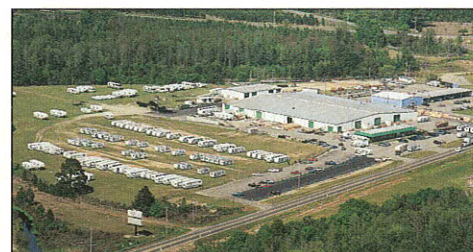
COACHMEN: LEADER TO THE GREAT OUTDOORS.

Coachmen Recreational Vehicle Company has manufacturing facilities in Middlebury, Indiana, Fitzgerald, Georgia, and Grants Pass, Oregon, and occupies over 600,000 square feet on nearly 120 acres. The Coachmen name is one of the most recognized names in our industry, and our products provide recreational enjoyment throughout North America and Europe.

From our beginning in 1964, we have been, "Dedicated to the Enrichment of Your Life." You will find proof of this dedication in our innovative and user-friendly products and our smorgasbord of customer benefits and services.

We are driven by a deep concern for your safety, comfort, pride of ownership and pleasure—in short, **your satisfaction.**

Coachmen knows what it takes to make an RV great. Join us! We'll lead the way to the great outdoors.



Come visit us at our new Oregon facility (above left), our Georgia facility (above right), or our Complex in Indiana (top) where you can relax at our Visitor's Center (above center) and enjoy guided tours of the assembly plants.

MEET PETE THE COACHMEN DALMATIAN.

Pete, the Dalmatian, has been a vital part of Coachmen since 1964, when he joined our newly formed company as watchdog, playmate and friend.

Pete became our official mascot when we learned that, coincidentally, the

Dalmatian is the official "coach dog." Since then, Pete has guided Coachmen and America to the best in products, quality and customer satisfaction. Follow Pete to the Great Outdoors.



P.O. Box 30, Middlebury, IN 46540 • P.O. Box 948, Fitzgerald, GA 31750

