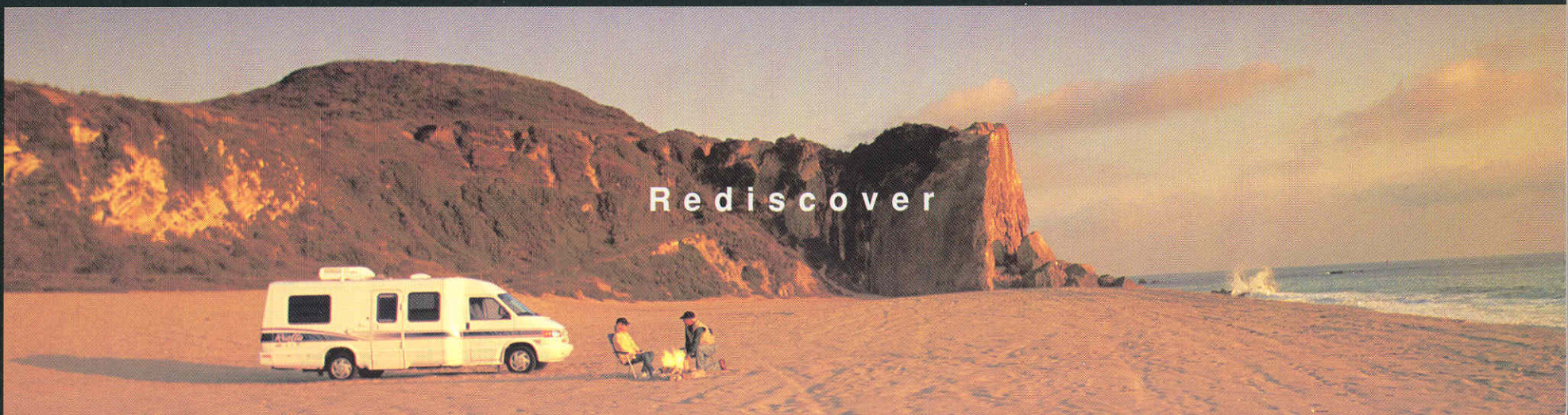
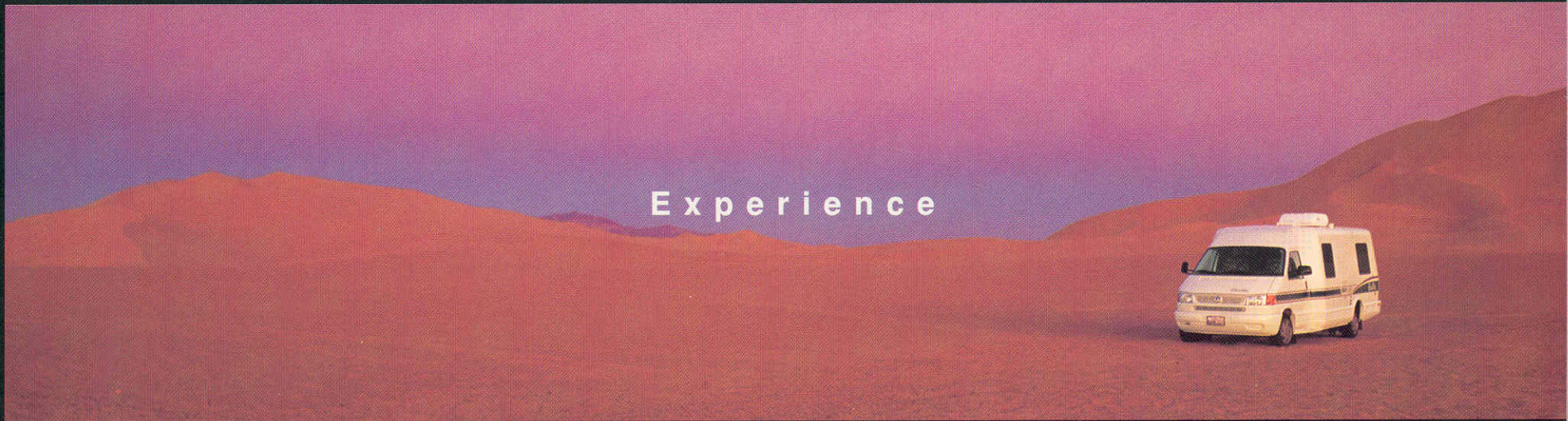
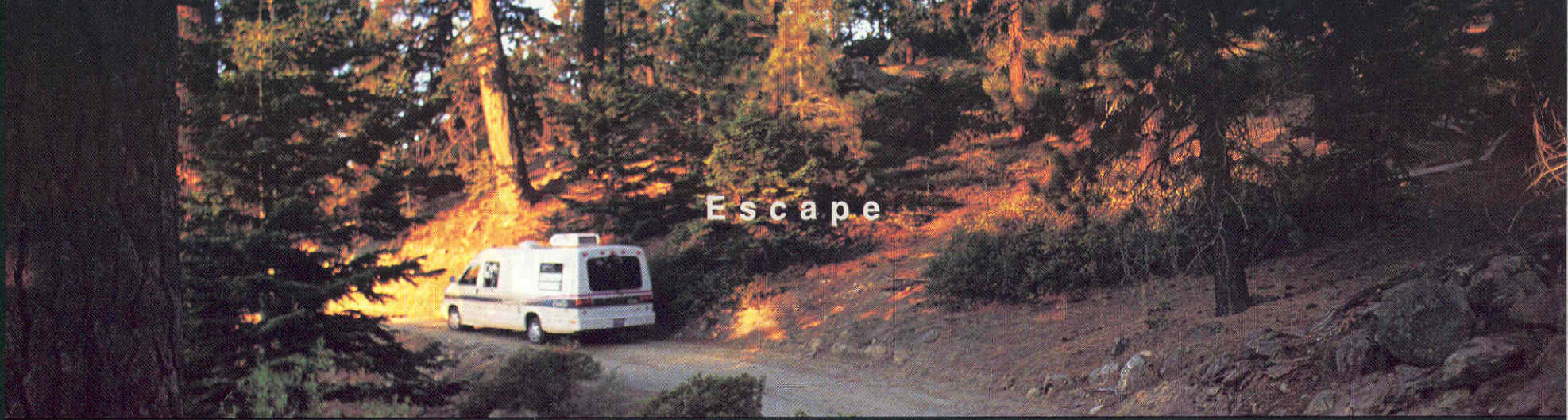


Escape

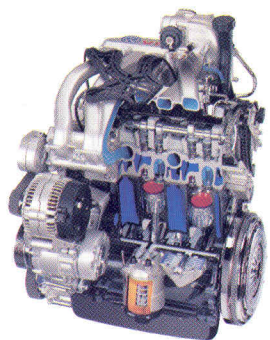
Experience

Rediscover





# Escape conventional thinking.



*Rialta has nearly 30% more get-up-and-go this year with its new 2.8 liter VR6 engine. The cylinder head, camshafts and exhaust system are adapted specifically for the Rialta, giving you customized performance and fuel economy that is better than ever. It's surprisingly quiet and develops maximum torque at the low-to-mid range, when you need it most.*



Contrary to what most people believe, you don't have to travel in a big motor home to live large. And when you opt for the efficiency of a compact recreation vehicle, there's no better investment than Rialta. It's built with the same uncompromising standards set for every Winnebago motor home.

Unlike Class B conversion vans,

Rialta isn't adapted from another vehicle, so there are no short cuts when it comes to structural integrity. Simply put, Rialta offers the convenience of a motor home along with the maneuverability of a car. At just 22 feet, its compact size enables you to parallel park or drive-thru with

confidence. And amazingly, Rialta's turning radius is even shorter than that of a full-size van.

Even if you've never been behind the wheel of a motor home, you'll feel at ease. Rialta's front-wheel drive and automatic transmission make driving a snap. And new for 1997, Rialta is equipped

with a Volkswagen-engineered,

2.8 liter VR6 engine

for negotiating on-ramps and steep inclines.

These and

other advantages add up to an efficient design with a generous interior space you just won't find in a conversion van. Because at Winnebago Industries, we believe in making every leg of your trip as exciting and comfortable as possible.







**Bed and breakfast.** The well-lit dinette features back-wall table storage for converting the area into a sleeping space. Overhead you'll find a convenient blanket shelf and an available videocassette player.



**Comfort zone.** Stow the dining table, fold down the seats and the dinette easily converts to a sleeping area. The bed is even wider this year, thanks to its space-conscious design.



## Model 22RD

**First class travel.** Redesigned driver and passenger seats in the cab offer additional armrest support. There's also an available 9" color TV with remote.



**Quick fix.** Preparing food is easy with conveniences like a 2-burner range top and an available microwave. A flip-up counter extension and drop-in sink cover add valuable work space.



**Redefining reclining.** Three reclining positions on the rear captain's chairs make travel more comfortable. Fold them down to create additional sleeping space.



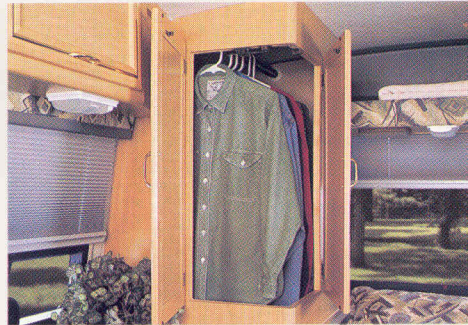
## Model 22RC (Standard)



**Store more.** This year, Rialta features redesigned passenger side cabinetry and wardrobe, and a longer double bed. The overhead bedding shelf is perfect for storing linens.



**Big benefits. Small package.** Rialta packs more power than ever before, thanks to a new Volkswagen VR6 engine. It handles like a car, due in part, to an automatic transmission and front wheel drive. Plus, driver and passenger side air bags are new for 1997.



**Built to suit you.** The redesigned double-door wardrobe is larger than ever and has a carpeted floor.



**Sleep on it.** The underbed storage area is even larger this year. It's roomy enough to accommodate sports equipment and other bulky items.



**Free sky.** A skylight helps illuminate the efficient galley, which includes a single-door Norcold refrigerator and available microwave.



**Mirror on the wall.** The unique bathroom contains telescoping walls and a mirrored medicine cabinet with sliding doors. And unlike conversion vans, Rialta is roomy enough to include a sink, lavatory and available shower.



**Pack it in.** You'll wonder how Class B van owners live without Rialta's generous storage space. The rear sleeping area now includes a redesigned vanity with TV shelf, ample wardrobe and more cabinetry for storing all kinds of provisions.



Model 22RC (Optional)



**Twice the comfort.** The available twin bed floorplan has two shirt closets, a nightstand and additional storage space under the right bed. There's also a removable pedestal table located in the center aisle.



**Instant breakfast.** A swivel chair and pull-up table create an instant surface for dining or playing cards. A 110/12V plug-in is located near the table on an interior wall.

Experience more  
with less.



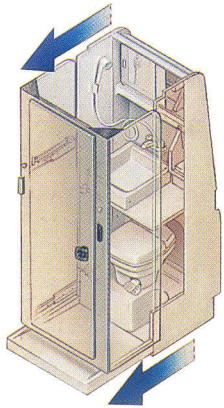
Rialta is the ideal vehicle for getting from here to there, whether you're taking a cross-country road trip or just cruising to the other side of town. Load the baseball team's gear for the season opener. Head off for a day at the golf course. Rialta's versatility makes for an enjoyable trip, whatever the duration. An available air conditioner with vents overhead and on the dash keeps passengers comfortable. You'll also appreciate Rialta's wide seats, easily accessible entrance doors and the non-slip tread strip on the running boards.



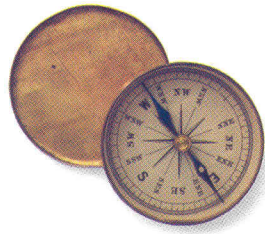
**Hidden advantage.** A convenient new storage area is accessible through the rear cap. The one-piece design also houses a power cord for quick hookups (model 22RC shown).



# Rediscover your peace of mind.



Now you see it, now you don't. The walls of the bath slide out to give you more room to clean up and use the available shower. When the walls slide in, there's more space to walk around in the coach.



You'll discover the practical advantages of owning a Rialta as soon as you step inside. It comes with all the elements of a home away from home, including enough space for a family of four, a kitchen and bath. There's even a slide-out bathroom and an available shower. But what really makes the Rialta worth owning are the features you wouldn't expect in a vehicle this size. Like a maximum 6'2" stand-up interior. Wider aisles beside the rear passenger seats. And the superior structural integrity of a unibody steel frame. These are just a few examples of Winnebago Industries' commitment to quality. When it comes to building a solid motor home, we'll go to any length. This time, it happened to be just under 22 feet.

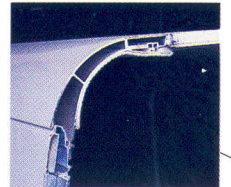
*Aerodynamic styling and contemporary graphics add to Rialta's sleek appearance.*

*Unlike conversion vans, the Rialta comes with a furnace to keep you comfortable on chilly nights.*

*Energy leaks and gaps in the sidewalls are prevented by foam sheet insulation.*

*The complete rear floor is made of steel for superior strength, electrocoated and undercoated to resist corrosion.*

*The large back window is equipped with an available wiper/washer and available defogger/defroster to enhance visibility when changing lanes or backing out of driveways.*



*Our exclusive interlocking joint system connects the roof and walls for a more durable, better-sealed body.*

*Appliances are secured with steel tie-downs, an exclusive Winnebago Industries safety feature.*

*The available exterior wash station with pump switch is perfect for quick cleanups.*

*The new high mount exterior brake light makes you even more visible to other motorists.*



*A rear storage compartment is coupled with the electrical center for easy access. And since the spare tire is now located under the chassis, the area is even roomier.*



The welded tubular aluminum framework is stronger and lighter than the wood used on other vehicles this size.

Every unit is pre-wired for an available roof air conditioner.

We've developed Thermo-Panel® sidewall construction which combines light weight, structural integrity and durability.



Rialta's aerodynamic styling and even weight distribution enhances its fuel efficiency.

The low-mounted driver and passenger side mirrors are electronically controlled and heated.

The fuel-fill door is flush-mounted with a locking cap.

Headlights and turn signals are flush-mounted to reduce drag.

Chassis-supplied daytime running lights are standard.



Alarms that detect smoke, LPG leaks and carbon monoxide are standard equipment.

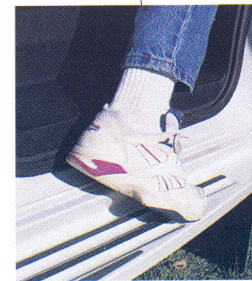
To make sure each unit is watertight, we conduct a water test simulating an intense rainfall.



The easy access entrance enables you to load larger objects with ease.

There's an available leather seat upgrade on the 22RD that includes the cab seats, companion seats and dinette.

There are six radio speakers throughout the cab and coach, and an available CD player.



Low entrance doors and non-slip tread strips on the running boards make getting in and out easier.

The new 140 HP, cast-iron VR6 engine offers improved fuel economy and quieter operation.

The power locks are endurance and corrosion tested and can be electronically operated by way of the cab doors.



# Specifications

22RD/22RC

<b>1997 Rialta</b>	
Length	21'8"
Exterior Height w/Roof Air*	8'6"
Exterior Height w/o Roof Air*	7'5"
Exterior Width	7'4"
Interior Height – Maximum	6'2"
Interior Width	6'10.5"
Fuel Capacity	21.1 gal.
Fresh Water Capacity w/Heater	20 gal.
Holding Tanks Capacity	19 gal.
LP Capacity	28 lbs.
GVWR	7,275 lbs.
GCWR	9,275 lbs.
Wheelbase	152"

S Standard  
O Optional

22RD 22RC

<b>Automotive</b>		
Chassis - Volkswagen – 2.8L fuel-injected gas engine, electrically controlled automatic transmission, 280-amp. battery/150-amp. alternator	S	S
Springs (air) – rear auxiliary	O	O
Tires (radial) w/spare	S	S
<b>Driver Conveniences</b>		
Time delay interior cab lighting	S	S
12-V electrical supply/lighter	S	S
Battery charge control – dual, automatic	S	S
Beverage tray w/cupholders	S	S
Cruise control	S	S
Curtain – front wraparound	S	S
Defogger/defroster – rear window	O	O
Door locks – power	S	S
Floor mats – rubber	S	S
Heating/air conditioning – in-dash automotive heater/air conditioner auxiliary rear automotive heater, new rotary controls	S	S
Auxiliary ceiling mount fan w/4 outlets	S	S
Auxiliary ceiling air conditioner w/4 outlets	O	O
Hood release – interior	S	S
Exterior mirrors – low mounted, electronically controlled, heated	S	S
Start circuit – auxiliary	S	S
Steering – power assisted	S	S
Sunvisors – mirror & light on right visor	S	S
Trim panels – driver & passenger doors, includes storage	S	S
Windows – cab (power)	S	S
Windshield wipers (intermittent)	S	S
Wiper/washer – rear window	O	O
<b>Front Seating Area</b>		
Seats (cab) – reclining mid-back design, headrests, armrests, lumbar support, swivel/slide pedestals, 3-point retracting seat belts	S	S

S Standard  
O Optional

22RD 22RC

Seats (companion) – adjustable reclining back, headrests, converts to a bed (42" x 74"), 3-point retracting seat belts	S
Storage (below companion seat) – convertible bed cushion storage, additional storage area	S
Swivel chair & pull-up table w/magazine rack	S
110/12V receptacle	S S
<b>Entertainment</b>	
Stereo w/cassette (cab) – deluxe electronic tune AM/FM deck w/auto reverse, seek feature, 6 speakers	S S
Stereo w/CD player (cab) – deluxe electronic tune AM/FM w/seek feature, 6 speakers	O O
TV (9" color) w/remote, includes a 12-V receptacle, coax input jack and aux/cable switch (requires antenna option)	O
Videocassette player (requires TV option, uses TV remote)	O
TV enhancement package – antenna (amplified), 1 DC receptacle, 1 interior jack, coax wiring, cable input	O O
<b>Rear Dining Lounge</b>	
Convertible dinette/bed (50" x 79")	S
Table (pull-up with backwall storage)	S
<b>Interior</b>	
Carpeting w/pad – stain resistant	S S
Ceiling – acoustical fabric headliner	S S
Ceiling lights	S S
Ceiling vent – powered, galley/bath	S S
Ceiling vent* – non-powered, rear, not available w/roof air conditioner	S S
Ceiling vent – powered ventilator fan, galley/bath, replaces power vent	O O
Color themes (interior) – choice of Dover or Lakewood	S S
Cupholders (lounge area)	S S
Skylight	S
Wardrobe – carpeted floor, clothes rod, auto light	S
Windows – tinted w/31% light transmittal	S S
<b>Galley</b>	
Counter extension – flip-up	S
Microwave prep kit	S S
Microwave oven	O O
Range top – 2 burners, recessed w/cover	S S
Refrigerator – single door w/door storage, 3-way - AC, DC, LP	S S
Sink – stainless steel, recessed w/countertop cover	S S
<b>Bedroom</b>	
Bedding shelf*	S S
Double bed – w/fitted bedspread, access to storage below, 2 bed pillows w/shams, 3-drawer vanity, shirt closet, double door wardrobe, decorator wall lamps, TV shelf	S
Twin beds – w/access to storage below right bed, fitted bedspreads, 2 bed pillows w/shams, nightstand, 2 shirt closets, pedestal table, decorator wall lamps	O
<b>Bathroom</b>	
Cabinet – expandable	S S
Medicine cabinet – mirrored doors	S S
Shower package – shower curtain, flexible shower head, shower pan w/power drain	O O

S Standard  
O Optional

22RD 22RC

Sink – fold-down	S	S
Tissue holder – surface mount	S	S
Toilet – marine style	S	S
Towel bar	S	S
Vanity shelf – fold-down	S	S
<b>Exterior</b>		
Bumpers – molded, steel reinforced	S	S
Entrance door locks (2) – latch, deadbolt	S	S
Entrance door w/screen door	S	S
Exterior wash station w/pump switch	O	O
Fuel fill – lockable cap	S	S
Graphics	S	S
Mud flaps – front & rear	S	S
Outlet – 110-V, curbside	S	S
Storage compartment (rear cap, includes power cord)	S	S
Running boards (fiberglass) – w/fender flares	S	S
Sewer hose & storage compartment	S	S
Tire tools – jack, jack handle, lug wrench	S	S
Trailer towing package – w/Class I hitch	O	O
Trailer wiring socket	S	S
Water fill door – lockable	S	S
Wheel covers	S	S
<b>Systems</b>		
Air conditioning pre-wiring – roof	S	S
Air conditioning* – roof, 7,100-BTU	O	O
Battery (auxiliary) – deep cycle	S	S
Second battery – deep cycle marine/RV	O	O
City water hookup	S	S
Electrical control center – 110-V AC/12-V DC, 40-amp. remote electronic converter/charger, AC circuit breakers, DC fuses, 30-amp. power cord	S	S
Furnace – electronic ignition, 19,000-BTU	S	
Furnace – electronic ignition, 17,000-BTU, ducted		S
Generator prep kit – gas line, 12-V wiring	S	S
Generator – 3,000-watt, gas, w/hourmeter	O	O
LP tank – permanent mount w/gauge	S	S
Monitor panel – water, holding & LP tank levels, battery condition gauge, water pump switch, generator start/stop switch	S	S
Water heater – 4-gal., electric w/Motoraid	S	S
Water pump (demand)	S	S
<b>Safety</b>		
Appliance restraint system	S	S
Carbon monoxide detector/alarm	S	S
Fire extinguisher (10-B.C.)	S	S
Ground fault interrupter	S	S
Smoke and LP leak detector/alarm	S	S
Three-point seat belts on forward facing seats	S	S
Driver/passenger side air bags	S	S
Lap belts in selected areas	S	S

\*Not all options available in combinations. See dealer for details.

The height of each model is based on the curb weight of a typically equipped unit on the standard chassis. The actual height of your vehicle may vary by as much as 2" depending on chassis or equipment variations. Winnebago Industries' continuing program of product improvement makes specifications, equipment, model availability and prices subject to change without notice.

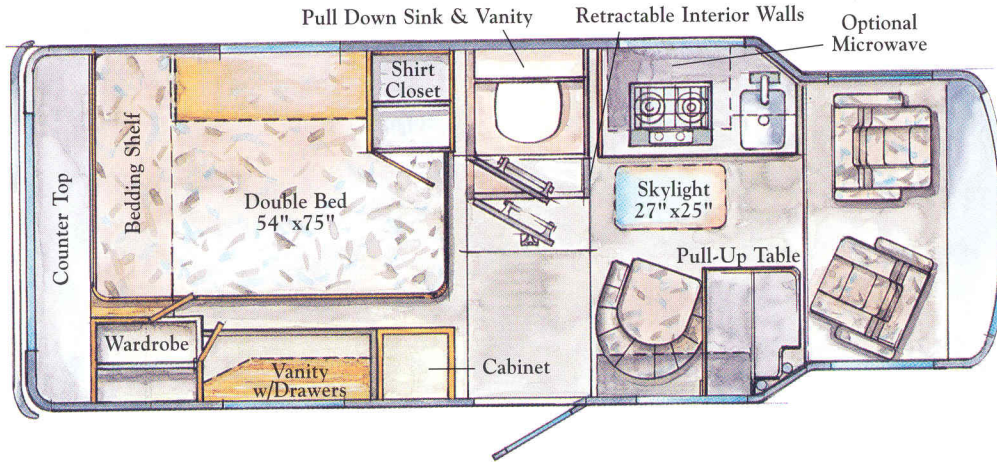
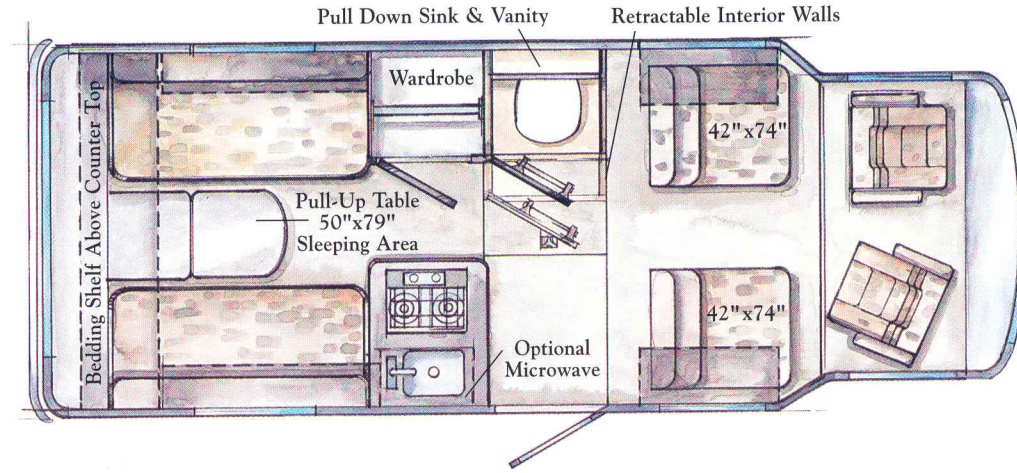


# Floorplans

## 22RD

This model features four captain's chairs up front and a rear dinette. Both convert into generous sleeping spaces.

Length	21'8"	Exterior Width	7'4"
Interior Width	6'10.5"	Interior Height-Max.	6'2"



## 22RC (Standard)

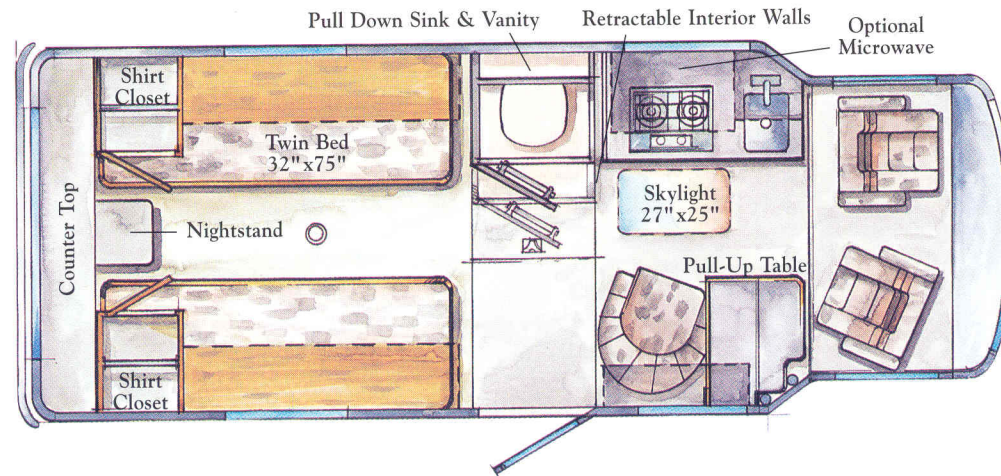
This floorplan includes a larger double bed and a new rear passenger side vanity and storage compartments. There's also a pull-up table and swivel lounge chair with a skylight overhead.

Length	21'8"	Exterior Width	7'4"
Interior Width	6'10.5"	Interior Height-Max.	6'2"

## 22RC (Optional)

Like the standard unit, this model has woodgrain cabinetry. It also has twin beds with storage under the right hand bed, a pedestal table, nightstand and shirt closets.

Length	21'8"	Exterior Width	7'4"
Interior Width	6'10.5"	Interior Height-Max.	6'2"

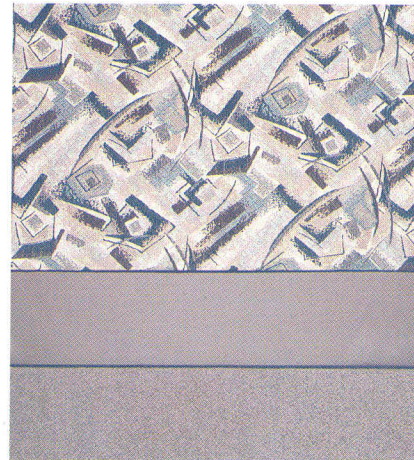


Note: Dashed lines denote overhead areas.



Explore your sense of style.

### Lakewood

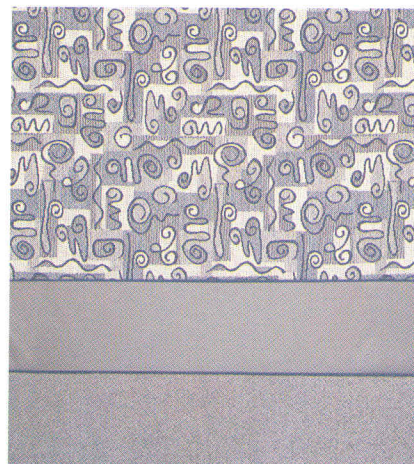


main

accent

carpet

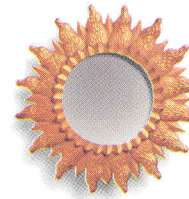
### Dover



main

accent

carpet



We admit it—we like to be in control. Which is why we make over 80% of everything that goes into our motor homes. The furniture and cabinetry in Rialta are no exception. Every last stitch and hinge conforms to our rigorous standards of quality. We even conduct a double rub test for upholstery that simulates getting in and out of a seat up to 30,000 times. We also accept only materials that surpass industry wear tests and are treated for stain resistance. Our meticulous efforts add up to a concept called Home Comfort Design. You'll call it incredible.

By carefully choosing everything from fabrics to carpeting, we have greater control over the fit and finish. Because at Winnebago Industries, what's on the outside counts just as much as what's on the inside.

Note: Chair shown is for fabric representation only. This chair style is not available.



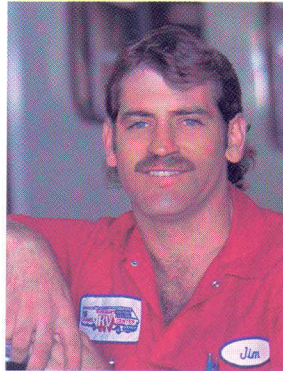
Find a greater sense of security.

### Warranty protection.

One of the most important features of a Rialta is something you won't find in the specifications. The peace of mind that comes with knowing you're protected by the most comprehensive warranty in the industry. The coach body of the Rialta is covered by

Winnebago Industries' 2-year/24,000-mile warranty.

In addition, Volkswagen of America, Inc. covers the chassis/cab for 2 years/24,000 miles and the power train for 5 years/50,000 miles.



*"The best hands-on training I've seen."*  
Service Technician Jim Bithell,  
Russ Dean's Family RV Center.

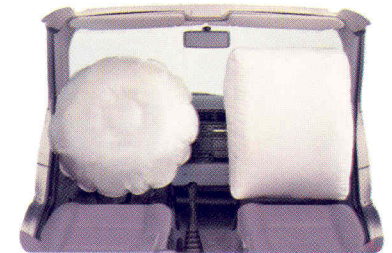
### Preferred Care Program.

Every new Winnebago Industries motor home comes with a one-year membership in our Preferred Care Program. This 24-hour nationwide assistance plan covers emergency dispatching for road service and towing, equipment service questions, service provider recommendations, service appointments and directions to service

locations. This year we added even more free services including jump-starts, tire changing, fuel delivery and lockout assistance.



*Our Preferred Care Program now has more benefits and covers all our '97 motor homes.*



*This year's Rialta features the protection of driver side and front passenger side air bag Supplemental Restraint System (SRS). It's just another example of Winnebago Industries' ongoing commitment to safety.*

## Winnebago Commercial Vehicles

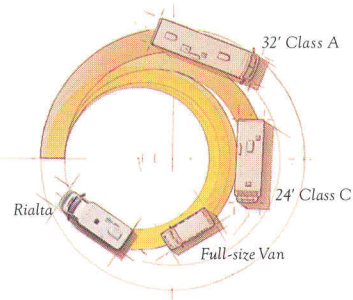
We build commercial vehicles such as mobile command units for fire and police departments and mobile clinics for



hospitals. A variety of models is available and sizes range from 22 to 37 feet. Each vehicle is custom designed.



The Rialta. More recreation. Less vehicle.




*Rialta has a tighter turning radius than a Class A or Class C motor home, or even a full-size van. You'll appreciate it when looking for a parking spot or making a U-turn.*

### Winnebago-Itasca Travelers (WIT) Club.

Socializing is an important part of motorhoming. And we don't know a more fun bunch of people than our WIT Club. There are more than 250 chapters across the U.S.A. and Canada. Many members enjoy attending rallies and traveling together in caravans. A highlight of every summer is the Grand National Rally when thousands of members meet at our campground in Forest City. In addition to social activities, WIT Club members enjoy many special benefits like professional trip planning, mail forwarding and discounts.



**Motorsports.** The Winnebago Motorsports Team puts racing fans on the inside track of the fastest growing sport in America. Members are invited to participate in special Pit Road Events, including driver autograph sessions, at selected

 Races throughout the season. Benefits also include a newsletter and special



Motorsports merchandise. At Winnebago Industries, we've been auto racing fans for years. We're the official motor homes of NASCAR, and we're associated with several NHRA® drag racing teams.

*Rialta* Built proudly by  


© 1996 Winnebago Industries, Inc. Forest City, IA 50436. Printed in USA.

Seat belts are your most important hookup. Always buckle up.