

1997

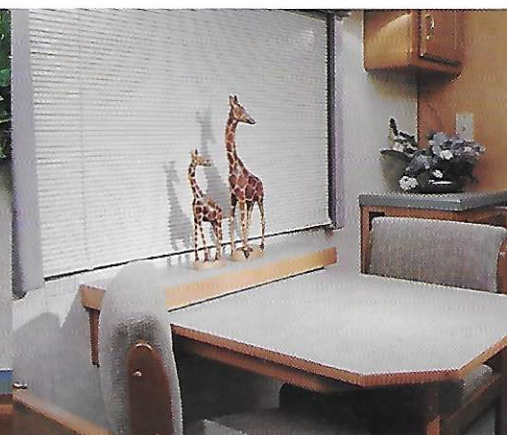


ETREKE

Trek - Quality Without Compromise

With the Trek, you can have a smaller coach, without the small-coach compromises. Don't compromise on space: the Trek features an expansive galley and a large, comfortable living area. Don't compromise on capacity: eighty gallons of fresh water, sixty of fuel, and thirty-five of LP gas matches many of the largest coaches. Don't compromise on storage: you'll enjoy the Trek's pass-through basement, and the Trek is unmatched for interior cupboard and closet space.

You'll also find the Trek is equipped with full-size appliances, bright 120V residential lighting, and even a 1000W inverter for convenient AC power on demand. The galley includes a micro-convection oven, 120V fluorescent lighting, and a large stainless steel double sink. The dinette expands for guests, and we include the matching folding chairs. Solar panels, rear camera, power driver seat . . . the Trek has so many features that you will wonder how we managed to fit them all in.





Safari Motor Coaches is America's premier luxury coach builder, and the Trek shows it's pedigree. The cabinets are both beautiful and built to last - made from premium Northwest hardwoods, never imitations or particle board. The workmanship is of a quality rarely found in a motorhome - countersunk screw joints, premium latches, and adjustable hinge. For durability and beauty, the Trek is unmatched - by any coach, of any size, at any price.

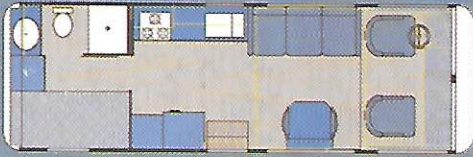
The interior decor is of the same high quality. Pat McCarthy, the RV industry's leading designer, has assembled a collection that is luxurious but contemporary. Premium fabrics and carpets were chosen, both for their beauty and their durability. And the craftsmen who install them use the same methods used in the best residential construction.

But as the great artists know, the secret to beauty is the inspired use of space. And in this

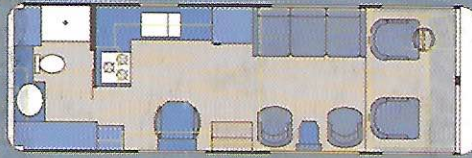
regard, the Trek is unmatched - with floorplans that sleep as many as eight people, yet are as spacious as these photographs show. Clearly, the Trek designers are masters in their medium.



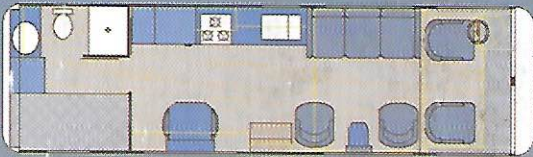
Trek Floorplans



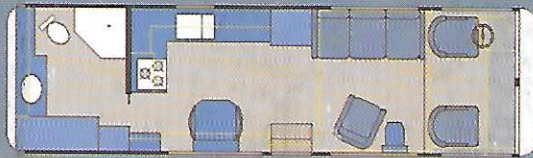
2420 Bunkhouse



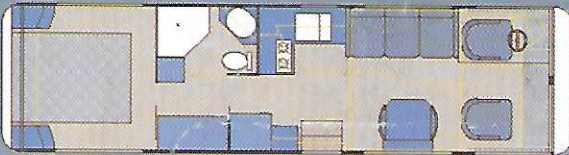
2430 Rear Bath



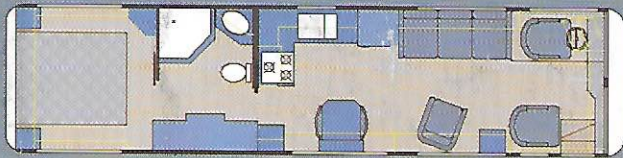
2820 Bunkhouse



2830 Rear Bath



3060 Center Bath



3330 Center Bath



3352 Side Aisle



*Safari Motor Coaches, Inc. • 30725 Diamond Hill Road • Harrisburg, OR 97746
Call Toll Free 1-800-458-8735*



Authorized Dealer



Trek Features & Specifications

Built to Last

What does the Trek have in common with a jet airplane and a half-million dollar bus conversion? All three are built with the same basic materials, with the same fundamental methods - but fortunately they're not all the same price.

Have you ever seen a fiberglass airplane? Of course not. Only aluminum provides the strength and resilience an airplane wing needs to survive the high speeds and harsh weather it will encounter, and yet is light enough to fly. The Trek features the same aircraft-type aluminum, both in framing and exterior skin. So it's lighter and more durable than any other coach in its class - and of course it can't delaminate. To find a comparable coach from a competitive company, you'll have to look at a bus conversion at several times the price.

The beauty of the Trek will last, because we don't use decals that will fade in the sun. Like the expensive bus conversions, we paint each Trek with a urethane paint, and for additional protection we apply a protective clear coat as well. That's premium protection - the best of any coach made today.



KITCHEN FEATURES

MICRO-CONVECTION OVEN
3-BURNER LPG RANGETOP
(2-BURNER IN 3060)
POWER VENT IN BATH
NORCOLD™ REFRIGERATOR
FANTASTIC FAN™ IN GALLEY
120V FLUORESCENT
LIGHTING
POWER RANGE HOOD
STAINLESS STEEL DOUBLE
SINKS

ENTERTAINMENTS AND LUXURIES

20" COLOR TELEVISION
13" BEDROOM TELEVISION
(3060, 3330, 3352 PLANS)
AMPLIFIED TELEVISION
ANTENNA
CABLE TV HOOKUP
PHONE HOOKUP

POWER FEATURES

3.6kW LPG ONAN
MICROLITE™
(2420, 2430, 2820, 2830)
6.3 kW ONAN EMERALD™
(3060, 3330, 3352 PLANS)
FREEDOM 10™ 1000W
INVERTER
50 AMP CHARGER
25W SOLAR PANEL
RESIDENTIAL LIGHTING
SYSTEM
DUO THERM 13,500 BTU
A/C
(DUAL IN 3060, 3330,
3352)

CHASSIS AND MECHANICAL

ELECTRIC POWER STEP
ALUMINUM SKIRTS AND
SIDING
STAINLESS STEEL WHEEL
LINERS
TOW HITCH
BASEMENT STORAGE
ENCLOSED STORAGE TANKS
URETHANE PAINT, BASE &
CLEAR

DRIVING COMFORTS

CRUISE CONTROL
AUTOMATIC TRANSMISSION
6-WAY POWER DRIVER SEAT
DELCO STEREO W/CASSETTE
REAR CAMERA AND MONITOR
DASH AIR CONDITIONING
AND HEATING

CABINERY AND FIXTURES

HARDWOOD CABINERY
LARGE SHOWER W/ SKYLIGHT
EXPANDING DINETTE

Options

PATHMAKER PACKAGE

HYDRAULIC LEVELING
SYSTEM
PATIO AWNING
AIR HORNS

OTHER OPTIONS

ELECTRO-MAJIC™ BED
(OPT. IN 3060, 3330 &
3352)
EMB SLEEP SACK
CB RADIO
DOUBLE PANE WINDOWS
PLANK FLOOR IN GALLEY
PLANK FLOOR IN BATH
FULL PLANK FLOOR
WINDOW AWNING(S)
MURAL

Specifications

COACH

FUEL	60 GAL
FRESH WATER	80 GAL
GREY WASTE	40 GAL
BLACK WASTE	40 GAL
LPG	35 GAL
WATER HEATER	6 GAL LPG
AC SERVICE	50 AMP
FURNACE	42,000 BTU

CHASSIS

CHEVROLET P-30 FRONT ENGINE	
GVWR	16,500 LBS
(2420, 2430)	14,800 LBS
GCWR	21,000 LBS
(2420, 2430)	20,000 LBS
ENGINE	454 VORTEC GAS
ENGINE OPT.	GM DIESEL
TRANSMISSION	GM 4L80E

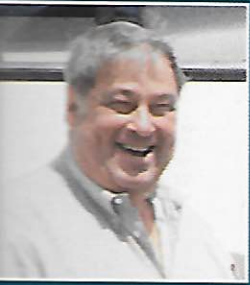
CHEVROLET P-72 DIESEL PUSHER

GVWR	18,000 LBS
GCWR	23,000 LBS
ENGINE	6.5L GM DIESEL
TRANS.	ALLISON AT-542

ALL SPECIFICATIONS SUBJECT
TO CHANGE WITHOUT NOTIFI-
CATION OR OBLIGATION.

The Safari Story

In the nine years since our founding, Safari Motor Coaches has grown to become the nation's leading builder of luxury motor coaches. The reason for our phenomenal success: Mat Perlot's personal commitment to the customer and the coach. Our founder's can-do attitude shows in everything we do.

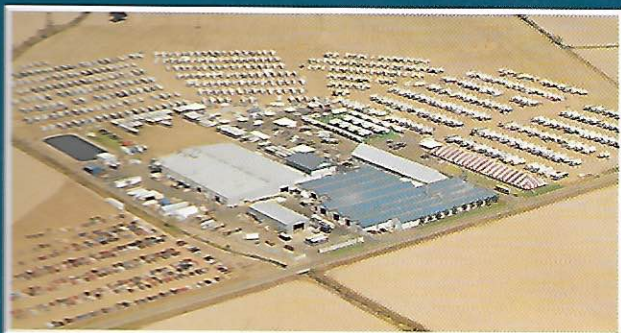


When it comes to quality, Mat Perlot is uncompromising. That's why we have our own fiberglass, cabinet and electrical facilities - so that we control the quality of these crucial components. No other manufacturer controls its quality as closely as Safari. No other manufacturer can.

Our quality commitment shows in our choice of materials, as well. The select Northwest hardwoods in our cabinets resist moisture, so they won't crack or swell like most woods. And they weigh less - so your coach handles better. In every construction detail, from our unique cabinet hinges to our aircraft-type wiring, you'll discover that we build the quality in.

And when it comes to taking care of you, the customer, Mat is just as determined. We have a simple attitude at Safari when it comes to customer service - we do what's right . . . and a little more. Our owner's club, Safari International, holds rallies in every part of the country, and you'll find our service vans with them providing free repairs. Technical help is just a toll-free call away, and our service network reaches every part of the country.

With a can-do spirit like this, it's no surprise that our customers have made us America's Number One luxury coach builder.



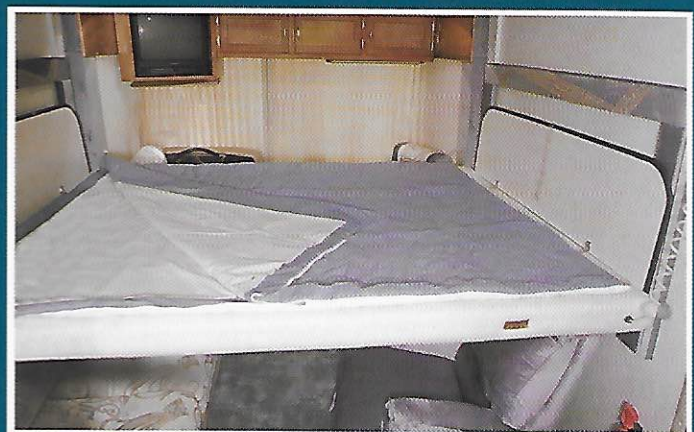
The Difference is Night and Day

How can a coach this size be so roomy and comfortable? The answer is the Trek's patented Electro-Majic™ Bed. During the day the bed hides in the ceiling, almost unnoticeable. At the touch of a switch a quiet, reliable electric motor lowers the bed into place, transforming the living room into a master bedroom. Unlike a bunk or overhead cab bed, it's easy to get into and out. Sit up and read, or watch the 20" television - enjoy the comforts of the Electro-Majic™ Bed.



Day

During the day, the Electro-Majic™ bed is hidden in the ceiling.



Night

At bedtime, it lowers into place, making one of the largest, most comfortable beds ever found in a motorhome.