

ULTIMATE ADVANTAGE



2 0 0 0



ULTIMATE ADVANTAGE

Last year, the Ultimate Advantage™ took the RV industry by storm, offering buyers exciting new floorplans in a luxury diesel pusher coach. This year, we've built on the success of a well received

model and strengthened it by implementing key product enhancements. We are pleased to present you with the 2000 Ultimate Advantage – the motor home that is redefining luxury.



40J - SOUTH BEACH

Cool comfort is ensured, thanks to our innovative **TRUEAIR™** central air conditioning system. This innovative system, exclusive to Winnebago Industries, utilizes an air conditioning unit located in the basement, not on the roof. The TrueAir system is not only easier to service, it also offers a lower clearance height and enhanced air quality by using residential-style filters instead of thin foam pads. On cool mornings, an available integrated heat pump allows you to take the chill off without starting the furnace. To make the most of TrueAir, as well as the other electrical features located throughout the coach, Ultimate Advantage employs the **POWERLINE™** Energy Management System – a “smart” system with the ability to run the air conditioner and numerous electrical loads at the same time when utilizing 30-amp. service by monitoring the usage of AC power and redistributing it as needed.



36C - OXFORD BLUE

The exciting new 36C floorplan makes RV travel even more comfortable with two slideouts. The 30" deep, flat-floor slideroom incorporates the dining table and sofa/sleeper while the opposing banquette gives this coach a wide open feel. Living area amenities in all Ultimate Advantage models include a 25" color TV with remote, a VCR with remote, deluxe sound system, TV antenna and a video selection system. Ultimate Advantage is also digital satellite system ready.



38K - SPRING MEADOW

Beautifully finished cabinetry features stile-and-rail doors with raised panel inserts. A new leather 'J' love seat (available on both the 38K and 40J) provides a good example of the premium Flexsteel® furniture found throughout the coach.

ULTIMATE ADVANTAGE



40J - SOUTH BEACH

This user-friendly galley includes a double-door refrigerator/freezer with icemaker, single lever faucet, appliance storage cabinet, available dishwasher, built-in coffee maker, and an Everpure® water purification system with a separate faucet. The Corian® solid surface countertops and ceramic tile flooring ensure that the galley is as beautiful as it is functional.



36C - OXFORD BLUE

The 36C features an innovative bedroom wardrobe slideout which provides for a spacious bedroom, not to mention increased storage. The comfortable residential size (60" x 80") innerspring Serta® mattress uses standard queen-size bedding. Gas, underbed spring supports provide easy access to the engine enclosure and a carpeted storage area. An available built-in 19" TV, directional reading lights and a decorative backwall mirror round out the bedroom's many features.



38K

This cross-aisle bathroom design is every bit as luxurious as it is spacious. It features a Corian solid surface countertop and recessed sink, a polished brass single lever control faucet, and a clear glass shower/tub door with an elegant etched design.



38K - SPRING MEADOW

The dining table design is another new feature for 2000. The table quickly extends by adding a leaf which, when not in use, is conveniently tucked away in a self-storing pocket located next to the table.



40J - SOUTH BEACH

Ride in style with the available, leather driver/passenger seat package that includes six-way power assist. On the passenger seat, the "dual sensitive" seat belt is anchored at the base of the pedestal, allowing the seat to easily rotate without constraint from the shoulder belt.



40J

A roll-out pantry with adjustable shelves and locking slides is another convenient galley feature.



The residential-height porcelain toilet is set on beautiful ceramic tile in the private bathroom.



40J

The available, vented combination washer/dryer features a larger drum to reduce drying cycle time.



The available central vacuum system with 30' hose and accessories makes cleaning the coach a breeze.

ULTIMATE ADVANTAGE



38K - SILVERFOIL

Ultimate Advantage's extensive list of standard features includes stylized aluminum wheels, high gloss sidewalls, tinted and dual glazed windows, automatic HWH® hydraulic jacks, fuel fills located on each side of the coach, and a one-piece fiberglass roof that won't deteriorate the way a rubber roof can when exposed to the elements. Available window awnings add to the beauty and function of the Ultimate Advantage. The standard awning rail, with its integrated rain gutter, channels water to the front and rear of the motor home.



36C - SILVERFOIL

The dual-slide 36C expands the usable floor space in both the bedroom and the living area. Up front, the sofa/sleeper and dining table slideout features a true flat-floor design for a smooth transition in the living area. For long-term reliability, both of the slideout systems feature rugged HWH hydraulics.



40J - ATLANTIS

Front slideout rooms incorporate our **STOREMORE** Hydraulic Slideout System — the original high-storage slide system. StoreMore allows full-size, interior overhead cabinets and exterior storage compartments to extend with the slideroom for easy access.



40J - ATLANTIS

The sensibly designed service compartment combines water and drainage facilities in one area and includes an exterior wash station. For added convenience, this compartment also houses a secondary monitor panel for instant access to tank levels.

ULTIMATE ADVANTAGE

INTERIOR COLOR THEMES

Colors are displayed with the main fabric on top followed by the accent fabric, Waterford Oak or Washed Maple wood choices, and carpeting.

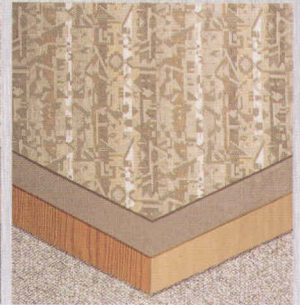
OXFORD BLUE



SPRING MEADOW



SOUTH BEACH



EXTERIOR COLOR THEMES

Exterior paint packages are Atlantis — recommended with South Beach interior color theme, and Silverfoil — recommended with Oxford Blue and Spring Meadow interior color themes. You may order either exterior color, regardless of your interior choice.

ATLANTIS



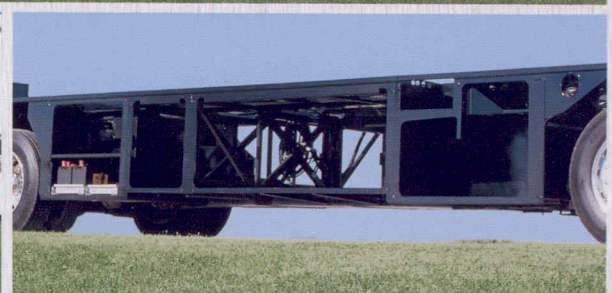
SILVERFOIL



ULTI-BAY THE ULTIMATE IN STORAGE DESIGN

The Ultimate Advantage features Ulti-Bay, an advanced chassis design specifically configured by Winnebago Industries to offer maximum exterior storage space. Unlike standard Straight Rail or Raised Rail Chassis, which feature frame rails running right through the storage compartments, Ulti-Bay's advanced construction eliminates obtrusive chassis rails in the center section which impede storage space. The result is much more available space for oversized, pass-through storage compartments.

In addition, Ulti-Bay neatly packages major components (central air unit, furnace, etc.) fore and aft of the central portion of the coach, leaving maximum basement storage in prime locations.



ULTIMATE ADVANTAGE

2000 ULTIMATE ADVANTAGE SPECIFICATIONS

	36C	38K	40J
Length	36'7.3"	37'11"	39'11"
Exterior Height†	12'1"	12'1"	12'1"
Exterior Width*	8'5.5"	8'5.5"	8'5.5"
Interior Height	6'8"	6'8"	6'8"
Interior Width	8'0.5"	8'0.5"	8'0.5"
Fuel Capacity (Std./Opt.)	100/NA gal.	100/125 gal.	100/125 gal.
Fresh Water Capacity w/Heater	109 gal.	109 gal.	109 gal.
Holding Tank Capacity - Black/Gray	50/54 gal.	50/54 gal.	50/54 gal.
LP Capacity◇	39 gal.	39 gal.	39 gal.
GVWR	29,410 lbs.	29,410 lbs.	29,410 lbs.
GAWR (Front)	10,410 lbs.	10,410 lbs.	10,410 lbs.
GAWR (Rear)	19,000 lbs.	19,000 lbs.	19,000 lbs.
Wheelbase	227"	243"	267"
Exterior Storage	124 cu. ft.	155.4 cu. ft.	184.5 cu. ft.

AUTOMOTIVE

	36C	38K	40J
Chassis Caterpillar Freightliner Electronic (CFE) 7.2L Turbo-Charged/After Cooled Engine, Hydraulically-Actuated Electronically-Controlled Unit Injectors (HEUI), Engine Block Heater (1,000-W), Jacobs Exhaust Brake, 300HP @ 2,200 RPM; 860 ft.-lbs. @ 1,400 RPM, Allison 6-Speed Electronic MD-3060 World Transmission, Touch Pad Gear Selector, Oil-To-Coolant Cooler	S	S	S
Chassis Caterpillar Freightliner Electronic (CFE) 7.2L Turbo-Charged/After Cooled Engine, Hydraulically-Actuated Electronically-Controlled Unit Injectors (HEUI), Engine Block Heater (1,000-W), Jacobs Exhaust Brake, 330HP @ 2,200 RPM; 860 ft.-lbs. @ 1,400 RPM, Allison 6-Speed Electronic MD-3060 World Transmission, Touch Pad Gear Selector, Oil-To-Coolant Cooler	O	O	
Air Suspension (Chassis Supplied)	S	S	S
Independent Front Suspension	O	O	O
Tires (Radial)	S	S	S

DRIVER CONVENIENCES

	36C	38K	40J
12-V Electrical Supply/Lighter & Aux. 12-V Electrical Supply	S	S	S
Battery Disconnect Coach Batteries	S	S	S
Cabinet Center Console	S	S	S
Cruise Control, Courtesy Blink Switch	S	S	S
Daytime Running Lamps, Hood Light	S	S	S
Defroster Fans (2) Auxiliary 2-Speed	S	S	S
Door Lock (Power) Remote Controlled, Main Entry	S	S	S
Dual Battery Charge Control Automatic	S	S	S
Flexsteel® Leather Driver & "Luxury Lounge" Passenger Seat	O	O	O
Floor Mat Driver, Sunvisors	S	S	S
Heating/Air Conditioning Automotive Blend Air System, Rotary Controls	S	S	S
Hood Release Exterior Key Locks	S	S	S
Horns (Air) Roof Mounted	O	O	O
Map Light (2), Lamps (2) Docking	S	S	S
Mirrors (Rear View) Electric, Remote Controlled, Heated	S	S	S
Rear View Monitor System (Sony®) Video, 1-Way Audio	S	S	S

36C 38K 40J

Seats (Flexsteel) 3-Point Retracting Seat Belts, 6-Way Power Assist (Driver Seat), Hinged Armrests, Adj. Lumbar Sup., Recline, Swivel/Slide Pedestal	S	S	S
Service Light Driver Side, Fog Lamps	S	S	S
Shade Pleated, Front Wrap-Around	S	S	S
Squeegee Stored under Hood	S	S	S
Start Circuit Auxiliary	S	S	S
Steering Power Assisted w/Tilt Wheel	S	S	S
Steering Wheel (Custom) Leather	O	O	O
Storage Cabinet (Front Overhead)	S	S	S
Window Shades Light Filtering (Cab Side Windows)	S	S	S
Window (Sliding) Driver, w/Screen, Dual-Glazed	S	S	S
Windshield Wipers (Intermittent) Pantographic	S	S	S

ENTERTAINMENT

36C 38K 40J

Antenna (Radio) Roof-Mounted, Flexible Rubber	S	S	S
C.B. Prep Kit Antenna, Coax Wiring, 12-V Power Connection	S	S	S
CD Multi-Disc Changer (Sony) w/Remote Control	O	O	O
Deluxe Sound System Amplifier, Cube Speaker System	S	S	S
Entertainment Center (Patio) AM/FM Cassette Deck, Speakers (2), DC Receptacle, 110-V Outlet, TV Jack, Radio Antenna	S	S	S
Entertainment Center (Patio) Compact Disc Player (Exchange For Cassette)	O	O	O
Satellite System Pre-Wiring Roof	S	S	S
Satellite System♦ Manual, Digital w/Dish & Crank, Digital Elevation Sensing Unit	O	O	O
Satellite System♦ Power, Digital w/Dish (NA in Canada)	O	O	O
Stereo Power Switch For Main or Auxiliary Battery Use	S	S	S
Stereo System Rear w/2 Speakers, AM/FM Cassette	O	O	O
Stereo System Rear w/2 Speakers, AM/FM Cassette, Compact Disc Player	O	O	O

36C 38K 40J

Stereo w/Digital Clock (Cab) (Sony) Electronic Tune AM/FM Cassette Deck w/Auto Reverse, Seek Feature, Deluxe Sound System	S	S	S
Stereo w/Digital Clock (Cab) (Sony) Electronic Tune AM/FM Compact Disc, Seek Feature, Deluxe Sound System	O	O	O
Telephone Jacks Internal (2)	S	S	S
TV (19" Color) w/Remote Located in Bedroom	O	O	O
TV (25" Color) w/VCR & Remote Video Selection System, Remote Speakers, Located in Front	S	S	S
TV Entertainment Package Amplified Antenna System, Coax Wiring, Cable Input, Interior Antenna Jacks (2), Ext. Antenna Jack, DC Receptacles (2), Antenna Check Reminder Light	S	S	S

SLIDEOUT

36C 38K 40J

Slideout Room (Front Driver Side) 30" Dining Table & Sofa/Sleeper (36C), 20" Galley/Sofa (38K, 40J), StoreMore	S	S	S
Slideout Room (Bedroom) 20" Wardrobe, Cedar Lined	S		

INTERIOR

36C 38K 40J

Carpeting w/Pad Stain Resistant	S	S	S
Ceiling Lights Fluorescent, Recessed	S	S	S
Color Themes (Interior) Oxford Blue (Blue), Spring Meadow (Green), South Beach (Sand), All w/Choice of Washed Maple or Waterford Oak Woodgrain	S	S	S
Courtesy Lights (2) Along the Floor w/Wall Switches	S	S	S
Day/Night Pleated Shades	S	S	S
Halogen Lights	S	S	S
Leather Flexsteel Furniture*			
Banquette*	O	O	O
Couch		O	O
J-Love Seat*		O	O
Lounge Chair*	O	O	O
Sofa Sleeper*	O		
Vacuum Cleaner (Central)	O	O	O
Washer/Dryer Combination	O	O	O
Windows Tinted, Dual Glazed, Thermo-Insulated	S	S	S

GALLEY/DINING

36C 38K 40J

Appliance Storage Cabinet	S		
Coffee Maker	S	S	S
Countertop (Corian®) Galley	S	S	S
Cutting Board Slideout	S		
Dishwasher* Built-In under Counter	O	O	
Flooring (Ceramic Tile) 6.5" x 6.5"	S	S	S
Lighting Decorative, Dining Area	S	S	S
Lighting under Cabinet, Fluorescent	S	S	S
Microwave/Convection Oven w/Range Fan Touch Control	S	S	S
Mirror Wall	S	S	
Pantry Pull-Out	S	S	S
Partition Glass	S	S	
Range Top (Maytag®) 3 Sealed Burners, Recessed w/Cover	S	S	S
Range Top (Maytag) w/Large Oven 3 Sealed Burners, Recessed w/Cover	O	O	O
Refrigerator/Freezer w/Icemaker Large, Wood Raised Panel Double Door	S	S	S

ULTIMATE ADVANTAGE

	36C	38K	40J
Refrigerator/Freezer w/Icemaker Large, Wood Raised Panel Four Door	O	O	O
Silverware Tray, Wastepaper Basket	S	S	S
Sink Stainless Steel, Large & Small Compartment, Recessed w/Countertop Covers (2), Single Control Faucet w/Pull-Out Sprayer	S	S	S
Table & Chairs (2) Flexsteel, (2) Folding w/Pull-Up Leaf	S		
Table & Chairs (4) Flexsteel w/Pull-Up Leaf	S	S	
Towel Rack, Utility Tray Tip-Out	S		
Ventilator Fan Powered w/Thermostatic Wall Controls	S	S	S
Water Purification System (Everpure®)	S	S	S

BEDROOM

	36C	38K	40J
Bedsprad, Pillow Shams, Throw Pillows (2)	S	S	S
Headboard Fabric	S	S	S
Lamps (2) Decorative, Wall-Mounted	S	S	S
Mattress (Serta®) Innerspring, Queen	S	S	S
Mirror Wall-Mounted (Back Wall)	S	S	S
Picture	S	S	
Queen Bed Cabinet Bed Base w/Bed Lift, Gas Springs	S	S	S
Reading Lamps (2) Adjustable	S	S	S
Roof Vent Non-Powered	S		
Wainscoting w/Chair Rail	S	S	
Wardrobe Mirrored Doors, Carpeted Floor, Wooden Clothes Rod, Shelf (38K & 40J), Cedar Lining, Light (38K & 40J), Drawers (36C)	S	S	S

BATHROOM

	36C	38K	40J
Flooring (Ceramic Tile) 6.5" x 6.5"	S	S	S
Hand Rail	S		
Lavatory Cabinet, Linen Cabinet	S	S	S
Make-Up Lights (4 Bulbs) 2	S	S	S
Medicine Cabinet w/Mirror	S	S	S
Mirrors (2) Wall-Mounted, Frameless	S		
Roof Vent Fan, Lift, Remote Switch	S	S	S
Shower w/Neo-Angle Wall Surround	S		
Shower Door (Glass w/Etch)	S	S	S
Shower Light, Skylight	S	S	S
Shower/Tub Garden Style w/Wall Surround	S	S	
Sink Lg. Oval, Solid Surface Material	S	S	S
Sink Sm. Oval, Solid Surface Material, Private Toilet Area	S		
Storage Cabinet	S		
Tissue Holder Recessed	S	S	S
Toilet w/Sprayer Porcelain (Elongated Bowl) w/Foot Pedal	S	S	S
Towel Bar	S	S	
Towel Ring (2 on 40J)	S	S	S
Ventilator Fan Powered	O	O	
Water Pump Switch	S	S	S

EXTERIOR

	36C	38K	40J
Awning* Patio	O	O	O
Awning Rail (Passenger Side)	S	S	S
Awning Slideroom Cover	S	S	S

	36C	38K	40J
Awnings* Window	O	O	O
Bumpers Steel Reinforced	S	S	S
Entrance Door Locks (2) Latch, Deadbolt	S	S	S
Entrance Door Step (Electric)	S	S	S
Entrance Door w/Screen Door Sliding Step Cover Panel, Switch Activated, Dual Glazed Window	S	S	S
Fiberglass Skin Smooth, One-Piece, High Gloss	S	S	S
Fuel Fill Doors (2) Lockable, L.H., R.H.	S	S	S
Generator Access Slide-Out	S	S	S
Graphics Package Choice of Silverfoil (Recom. w/Oxford Blue & Spring Meadow) or Atlantis (Recom. w/South Beach)	S	S	S
Holding Tank (Heated Compartment)	S	S	S
Ladder	O	O	O
Mud Flaps Rear (2)	S	S	S
Mud Guard* Full Width, Rear	O	O	O
Outlet 110-V	S	S	S
Porch Light w/Interior Switch	S	S	S
Service Center (Electrical) Cable TV Input, Power Cord, Automatic Generator/Shoreline Changeover Switch, Telephone Input	S	S	S
Service Center (Drainage/Water) Wash Station w/Water Pump Switch, Paper Towel Holder, Soap Dispenser, Glove Holder, Holding Tank Flushing System (Black Tank Only), Monitor Panel, City Water Hook-Up/Tank Diverter Fill, Drainage Valves, Sewer Hose, Fresh Water System Drain	S	S	S
Slideout Storage Tray	O	O	O
Spotlight Roof Mounted w/Electric Controls	O	O	O
Stepwell Light w/Interior Switch	S	S	S
Storage Compartments Floor & Side Trunk Lining, Lights, Electrodeposition Coated Steel, Insulated Doors w/Gas Cylinder Supports, Locking	S	S	S
Trailer Towing Package w/Hitch	S	S	S
Trailer Wiring Fixed Mount Female Socket & Male Trailer Plug Connector	S	S	S
Wheels (Stylized) Aluminum	S	S	S

SYSTEMS

	36C	38K	40J
TrueAir™ Residential Central Air Cond. Remote Cooling Unit, Ceiling Distribution, Wall Thermostat	S	S	S
Batteries (3) Deep Cycle	S	S	S
Battery Charger (Solar) 10-Watt	S	S	S
City Water Hook-Up	S	S	S
Electrical Control Center AC & DC Breaker Panels	S	S	S
Furnace (Auxiliary) Ducted below Floor, Low Profile, 25,000-BTU	O	O	
Furnace Ducted below Floor, Low Profile, 35,000-BTU	S	S	
Furnace Ducted below Floor, Low Profile, 40,000-BTU	S		
Generator (Onan® Marquis) 6,500-Watt, LP Fueled	S	S	S
Generator (Onan Quiet Diesel™) 7,500-Watt	O	O	O
Heat Pump* Central Air	O	O	O
Hydraulic Leveling Jacks Front & Rear, Automatic Controls	S	S	S

	36C	38K	40J
Inverter/Charger (Heart Interface®) DC/AC, 1,500-Watt, Remote Panel, Dual Chassis/House Charging Capabilities	S	S	S
LP Tank Permanent Mount w/Gauge	S	S	S
Monitor Panel Water, Holding & LP Tank Levels, Battery Condition Gauge, Water Heater Ignition Switch w/Pilot Indicator Light, Water Pump Switch, Generator Hourmeter Gauge, Generator Start/Stop Switch, Battery Digital Voltmeter (NA 36C), Energy Management Display (NA 36C), Solar Panel/Battery Charger Light (NA 36C), Located in Galley	S	S	S
Power Cord 50-Amp., Detachable	S	S	S
PowerLine Energy Management System	S	S	S
Water Heater (Suburban®) 10-Gal., Electronic Ignition, 120V AC/LP Gas, w/Motoraid	S	S	S
Water Heater Winterization By-Pass Valve	S	S	S
Water Pump (Demand) Accumulator Tank	S	S	S
Water Sys. Winterization Valve Man.	S	S	S
Water Winterization Sys. Auto., 12-V Control Panel, Anti-Freeze Tank	O	O	O

SAFETY

	36C	38K	40J
Assist Bars (2), Assist Handle* Exterior, Lighted, Acrylic w/Logo, Carbon Monoxide Detector/Alarm, High Mount Brake Light, Escape Window, Fire Extinguisher (10-B.C.), Ground Fault Interrupter, Lap Belts in Selected Areas, LP Leak Detector/Alarm, Smoke Detector/Alarm, Three-Point Adjustable Retracting Shoulder & Lap Seat Belts Dual Sensitive, Driver/Passenger Seats, Windshield Laminated Safety Glass	S	S	S

WARRANTY

	36C	38K	40J
12-Month/15,000-Mile Basic Warranty, 36-Month/36,000-Mile Warranty on Structure**, 10 Year Limited Parts & Labor Warranty on Roof	S	S	S

† The height of each model is to the top of the available satellite system dish and is based on the curb weight of a typically equipped unit on the standard chassis. The actual height of your vehicle may vary by as much as 2' depending on chassis or equipment variations.

▼ The Ultimate Advantage features a widebody design – over 96". In making your purchase decision, you should be aware that some states restrict access on some or all state roads to 96" in body width. Before making your purchase decision, you should confirm the road usage laws in the states of interest to you.

NA Not Available

◇ Capacities shown are tank manufacturer's listed water capacity (W.C.). Actual filled LP capacity is 80% of listing due to overfilling prevention device on tank.

S Standard

O Optional

◆ TV satellite system options do not include programming activation or receiver. Quality reception is only available in the lower 48 states.

* Not all items available in combination. See dealer for details.

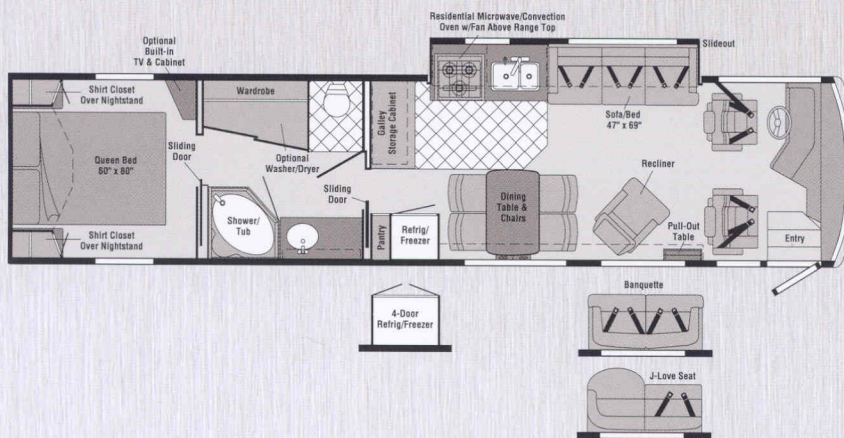
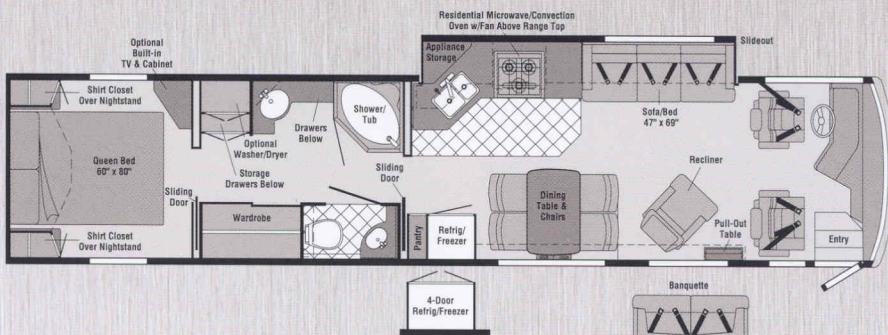
** See your dealer for complete warranty documentation information.

Winnebago Industries' continuing program of product improvement makes specifications, equipment, model availability, and prices subject to change without notice. Comparisons to other motor homes are based on the most recent information available.

ULTIMATE ADVANTAGE

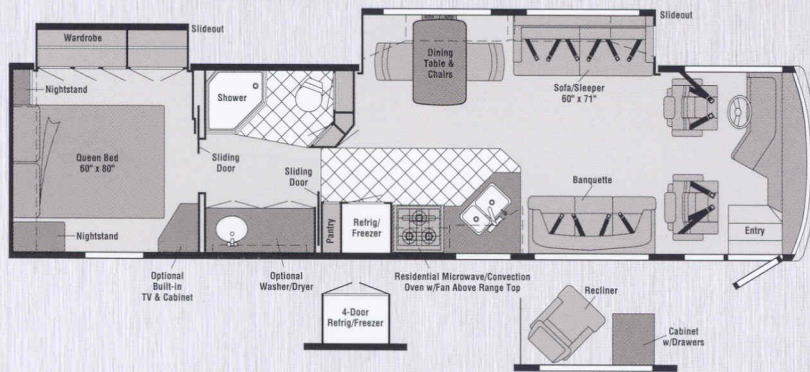
FLOORPLANS


40J Our largest Ultimate Advantage floorplan features an angled galley and sofa/bed slideout. The luxurious bathroom includes two separate sinks for added convenience. Beautiful ceramic tile floor is diagonally laid in the galley and the private toilet area.




38K This galley and sofa/bed slideout model offers a tremendous amount of living space. The lounge area can be equipped with a recliner and table, an available banquette, or a new J-Love seat.

36C This exciting new floorplan offers excellent full-time livability with two slideouts. Features include a sofa/sleeper, a banquette, a bedroom wardrobe slideout, and a flat-floor slideout design in the lounge area.



 Standard Seat Belts

 Ceramic Tile Flooring

Note: Dimensions shown are for sleeping space only and dashed lines denote overhead storage areas.

READ THIS GUIDE.

To learn more about what separates our motor homes from others, ask for this free guide next time you visit your Winnebago Industries dealer. It explains our superior manufacturing process. Use it to learn more about important safety and quality considerations as you shop for the motor home that's best for you.



www.winnebagoind.com

For Sales and Service Information Contact:

WIT CLUB.



Membership in the Winnebago Itasca Travelers (WIT) Club is a great way to meet people and get even more enjoyment from your motor home. As an owner of a Winnebago Industries RV, you can join the Club and take advantage of some great services — like professional travel planning and mail forwarding — and participate in some great rallies and caravans. Call 1-800-643-4892 ext. 1 for more information.



Seat belts are your most important hookup. Always buckle up.