

# WINDSPORT

Class A Motorhomes



# WINDSPORT



Class A

WINDSPORT

### *Lifestyles...*

**W**hen you are ready to get away for the weekend or for an extended vacation, you will have the freedom to create your own itinerary in the privacy of your own home. It is all yours in a luxurious Windsport Class A Motorhome.

You will quickly learn to appreciate and enjoy all the comforts and amenities that are included as standard features, and the long list of options that can make touring in the widebody Windsport motorhome the most delightful experience of your life.





The driver's compartment is designed and built for maximum comfort and safety. Fully-insulated steel-cage construction protects you, while the huge panoramic windshield affords maximum visibility. The ergonomically designed dash keeps all gauges within easy view and all switches and controls within easy reach. Our in-dash heating and air conditioning system distributes air through plenums, not ducts - reflecting the best in automotive design. The deluxe, fully-adjustable captain's chairs keep you comfortable for the long drive and are available with the leather option. For your safety, seatbelts are installed throughout.



WindSport's complete line-up of slideout floorplans are designed for extra comfort with added living room, dining room and bedroom space. You have three to choose from. The 33SL offers a large living and dining room slide area, while the 34K offers a large living and kitchen slide area. The 34K also comes standard with our patent pending travel lock system which holds the room safely in place and is engaged and disengaged with the push of a button. And now we've added the amazing new 35D double slide to our line-up. This new floorplan offers the living and dining room slide up front and a unique new bedroom slide. The bed actually slides out and gives you a large storage area underneath. All of these floorplans dramatically increase the floor space while giving you a tremendous amount of interior and exterior storage. Easy to operate, WindSport's slideouts are built for reliability and long life.



Class A

WINDSPORT

## WINDSPORT CLASS A INTERIORS



Orlando Blue



Orlando Green



Orlando Taupe

**T**he Windsport galley provides plenty of space and all the amenities of home. It comes complete with residential style brand name appliances. You'll love the large porcelain sinks and the single lever faucet. And for extra durability, all the drawers are fitted with high-quality roller guides for smooth operation.



**W**indsport's elegant bedroom features an island queen bed complete with inner-spring mattress, matching bedspread, pillow shams, and window treatments. The bed frame is fitted with gas lift-struts for easy access to the storage area under the bed. Wardrobes, shirt closets and convenient night stands provide plenty of room for your belongings. The beautiful reading lights complete the warm surroundings.





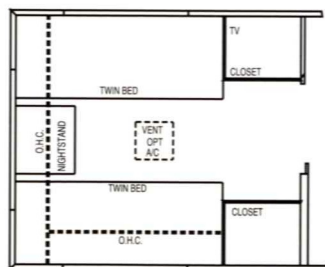


Four Winds' belief is that everyone should have the opportunity to enjoy the motorhome lifestyle. That is why we designed the 34W easy access floorplan. It comes equipped with the Braun Corporation hydraulic lift, free standing dinette, oversized shower, open sink area in the bathroom and features extra wide aisles for maximum accessibility. Best of all, these features are all standard on the new 34W easy access Windsport.

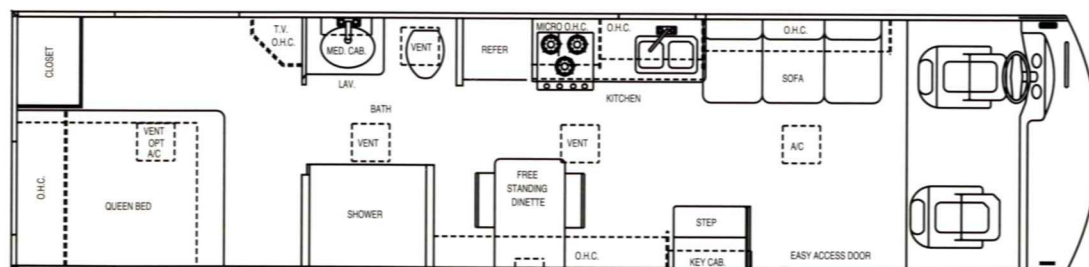


It's the first standard run motorhome designed for easy access.  
*Motorhome living made affordable for everyone!*

## Twin Bed Option

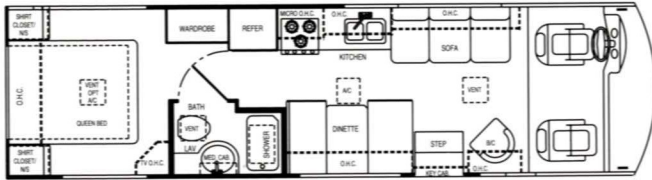


## 34W

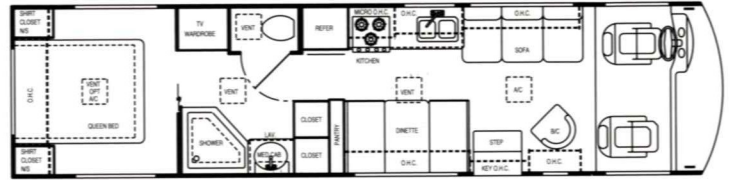




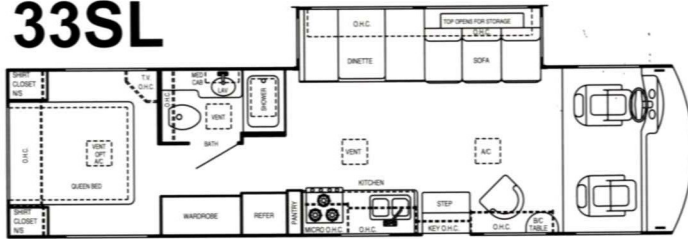
### 30Q



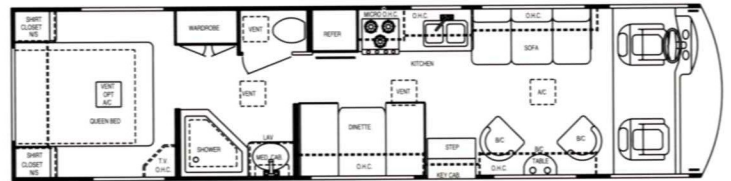
### 33B



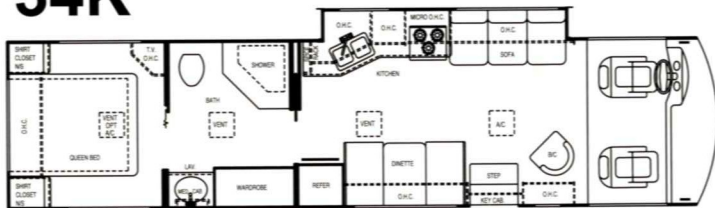
### 33SL



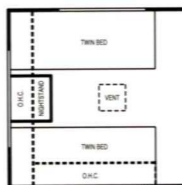
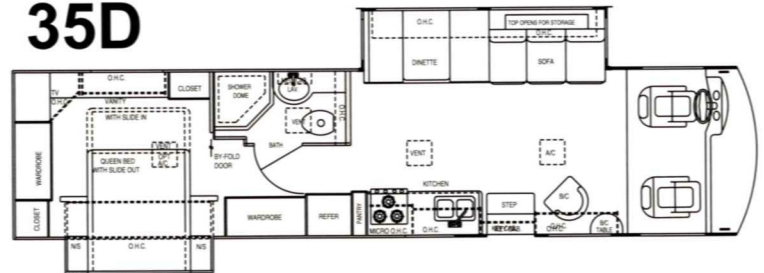
### 34H



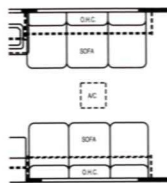
### 34K



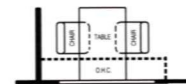
### 35D



**Twin Bed  
Option**



**Facing Sofa  
Option  
(34H Only)**



**Free Standing Dinette  
Option**



### Windsport Class A

#### Standard Features

##### Construction/Exterior

- 1 1/2 x 1 1/2", 16 gauge steel welded floor system
- Automatic electric entrance step
- Deluxe heavily-insulated compartment doors
- Factory-installed awning
- Factory-installed hitch
- Fully-insulated ceiling ducted air conditioning and in-floor residential-style heating
- Fully laminated roof, walls and floors incorporating energy-saving high-density block foam insulation
- Fully-welded tubular aluminum roof and sidewall cage construction
- Generator
- Heated and enclosed Roto-cast® holding tanks
- Large pass-through exterior storage compartment
- One-piece fiberglass rear cap
- Patented E.M.T. system which is a rubber mounting suspension system on the chassis that absorbs and isolates road vibration for a smoother ride
- Premium one-piece rubberized roof
- Safety-assured double steel-plated and insulated firewall and cockpit floor
- Seamless roto-cast® storage compartments
- Seamless, fiberglass exterior sidewalls
- Skylight in bathroom
- Widebody design

#### Standard Features

##### Appliances

- 13,500 BTU ducted roof air conditioner (front)
- 11,000 BTU ducted roof air conditioner (rear)
- 19" color TV w/remote control
- 19" color TV w/remote in the bedroom (35D only)
- Cable TV hook-up
- Coleman direct cool air conditioner
- Electronic ignition water heater w/standard water heater bypass kit
- Fully-equipped galley which includes: a large double-door refrigerator, high-output 3-burner gas range w/oven, residential-style microwave
- Name brand appliances
- Premium digital AM/FM cassette stereo

##### Comfort/Convenience/Safety

- Bedroom TV cabinet
- Deluxe remote heated exterior mirrors
- Deluxe innerspring mattress w/comforter
- Easy access flip-up storage sofa
- High-efficiency heating, air conditioning and defrosting distribution system built into dash
- LP leak and CO detectors
- Marine-type detachable power cord
- Remote battery disconnect
- Residential linoleum (galley area)
- Rubber tread entry steps
- Spacious overhead cabinetry w/ raised oak doors

#### Windsport Class A

##### Options

- 13" color TV w/remote (bedroom)
- 13.5 BTU ducted roof air conditioner (bedroom)
- 2nd auxiliary battery
- 5.0 KW Onan® generator
- 7.0 KW Onan® generator
- 50-amp service
- Back-up camera
- Captain chair in-place-of barrel chair in living room (30'-34')
- Captain chairs in-place-of barrel chairs in living room (34H only)
- Convection microwave w/3-burner range top
- Dash fans
- Day / Night shades
- Deluxe ceiling fan w/thermostat control
- Deluxe AM/FM stereo with CD player
- Exterior paint
- Free standing dinette w/4 chairs (Std. on 34W)
- Hide-A-Bed sofa (33SL, 34W & 35D only)
- Hydraulic leveling jacks
- Leather driver & passenger seats
- Outside shower
- Refrigerator w/ ice maker
- Sofa in-place-of barrel chairs on passenger side (34H only)
- Twin beds with nightstand
- Video cassette recorder
- Wheel liners

The Windsport's impressive exterior storage features Roto-Cast® storage compartments. These seamless compartments virtually eliminate the possibility of water intrusion. This proven technology also provides a quiet, strong and insulated storage area for all your valued belongings.



Windsport's spacious bathroom offers generous storage in its warm surroundings. The standard skylight allows for additional natural lighting and warmth while adding extra head room in the shower area.





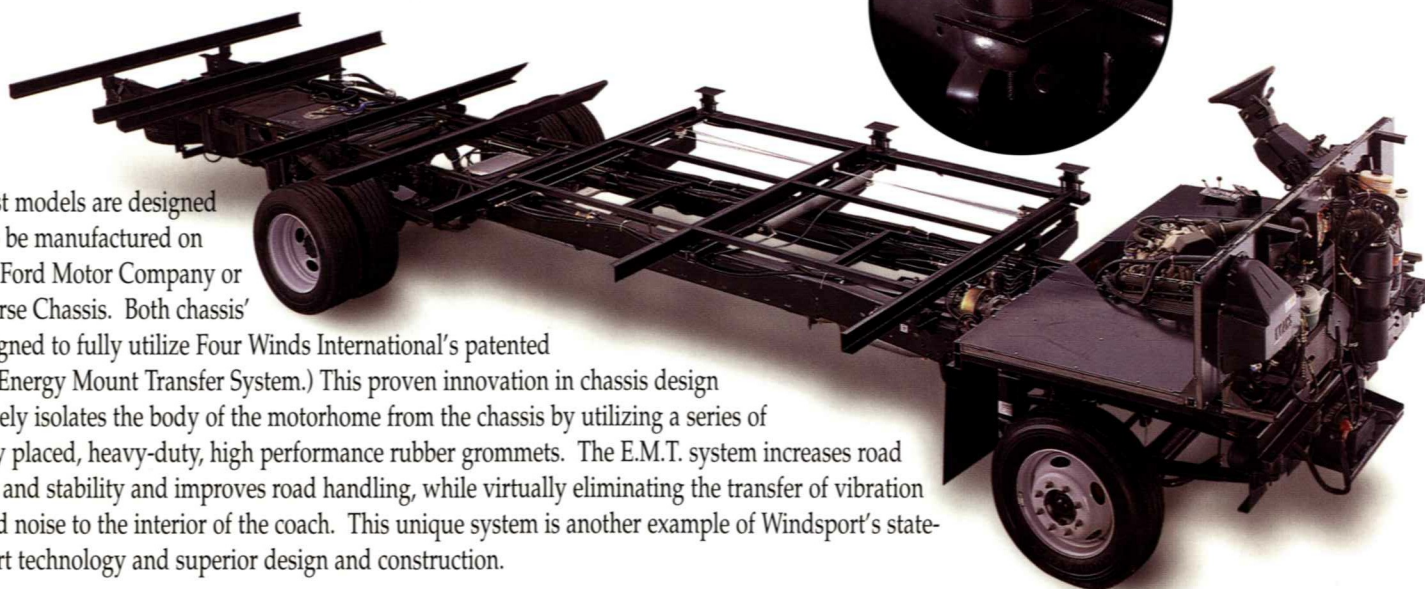
2000 Windsport Class A	30Q	33B	33SL	34H	34K	34W	35D
Engine - Ford 6.8L	V10	V10	V10	V10	V10	V10	V10
GVWR	18,000	18,000	20,500	18,000	20,500	20,500	20,500
GAWR (Front)	7,000	7,000	7,000	7,000	7,000	7,000	7,000
GAWR (Rear)	11,000	11,000	13,500	11,000	13,500	13,500	13,500
UVW	13,990	14,730	15,900	14,710	15,540	15,475	16,685
GCWR	26,000	26,000	26,000	26,000	26,000	26,000	26,000
NCC	4,010	3,270	4,600	3,290	4,960	5,025	3,815
Engine -Chevy 7.4 (Workhorse)	Vortec	Vortec	-	Vortec	-	-	-
GVWR	16,500	16,500	-	16,500	-	-	-
GAWR (Front)	5,500	5,500	-	5,500	-	-	-
GAWR (Rear)	11,000	11,000	-	11,000	-	-	-
UVW	13,355	13,905	-	14,190	-	-	-
GCWR	21,000	21,000	-	21,000	-	-	-
NCC	3,145	2,595	-	2,310	-	-	-
Wheel Base Ford/Workhorse	190"	226"	216"	237"/228"	224"	237"	237"
Exterior Length (w/o ladder)	31'8"	34'10"	33'9"	35'1"	35'3"	35'5"	36'6"
Exterior Height w/ A/C	11'6"	11'6"	11'6"	11'6"	11'6"	11'6"	11'6"
Exterior Width	99"	99"	99"	99"	99"	99"	99"
Interior Width	96"	96"	96"	96"	96"	96"	96"
Interior Height	79 3/4"	79 3/4"	79 3/4"	79 3/4"	79 3/4"	79 3/4"	79 3/4"
Awning Size	15'0"	18'0"	16'0"	18'0"	18'0"	14'0"	18'0"
Fuel Ford/Workhorse (Gal.)	75/75	75/75	75/-	75/75	75/-	75/-	75/-
LPG (Pounds)	79	79	84	79	84	79	79
Fresh Water (Gal.)	58	58	58	58	58	58	86
Waste Water (Gal.)	30	30	30	30	30	30	30
Gray Water (Gal.)	35	30	35	30	30	30	30
Furnace BTU's	31,000	31,000	31,000	31,000	31,000	31,000	31,000

Product information, specifications and photography in this brochure were as accurate as possible at time of printing. Since we continually strive to improve our products, actual products may differ. Prices and specifications are subject to change without notice. All capacities are approximate and dimensions are nominal. Some features or options may be different or unavailable in Canada.

**Vehicle Loading**-Every effort has been made to provide the greatest number of options for the recreation vehicle owner. Along with these choices comes the responsibility to manage the loads that are imposed by the choices so that they remain within the manufacturer's specified chassis weight limits. Do not overload the recreation vehicle.

**Dry weights** based on standard features; optional equipment not included. Net carrying capacity (NCC) determined by subtracting unloaded vehicle weight (UVW) from gross vehicle weight (GVWR) and includes fluids, options and cargo. Liquid capacities and weights are approximations only.

Most models are designed to be manufactured on either a Ford Motor Company or Workhorse Chassis. Both chassis' are designed to fully utilize Four Winds International's patented E.M.T. (Energy Mount Transfer System.) This proven innovation in chassis design completely isolates the body of the motorhome from the chassis by utilizing a series of carefully placed, heavy-duty, high performance rubber grommets. The E.M.T. system increases road comfort and stability and improves road handling, while virtually eliminating the transfer of vibration and road noise to the interior of the coach. This unique system is another example of Windsport's state-of-the-art technology and superior design and construction.



## YOUR LOCAL DEALER

## THOR'S "2 + 2" WARRANTY

2 year limited structural warranty and  
2 years on major components



This brochure is printed on recycled paper as part of Thor's corporate effort to minimize waste and conserve our natural resources. We know you will join us in this effort to maintain North America's great outdoors. For who appreciates the natural beauty of our open spaces more than an RV'er?



# WINDSPORT

FOUR WINDS INTERNATIONAL  
P.O. Box 1486 • Elkhart, IN 46515-1486  
(219)266-1111 • Fax (219)294-8971  
[www.fourwinds-rv.com](http://www.fourwinds-rv.com)