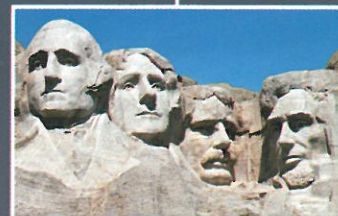


# **Adventurer**

*by Slumber Queen*  
**Building Quality Since 1969**



*For the adventurer in you!*

**Truck Campers**

**Fifth Wheels**

**Travel Trailers**





 **Adventurer**

*Be one... own one!*

**You're an adventurer! Your pulse quickens at the thought of setting out for distant horizons... going your own way... of finding each day different. Some trips you just explore, on others a special destination awaits at the end of the road. Either way, our Adventurer Series offers a luxurious home-away-from-home as your travelling companion.**

### *Quality to go*

From top to bottom, inside and out, we have engineered the Adventurer Series to the highest standards. Rough roads to travel? No problem! You can count on the durability of our professionally welded trailer frames. And when we use wood components, it's always the highest grade kiln-dried spruce to ensure maximum structural performance. Our products are built in the rugged Northwest and will endure all weather conditions.



### *A choice of options*

Our award winning designs include many standard features and amenities that others offer as extras. However, to ensure your recreational unit has everything you want for your travelling pleasure, we have an extensive list of options that can meet all your needs.

 **Adventurer**  
by Slumber Queen





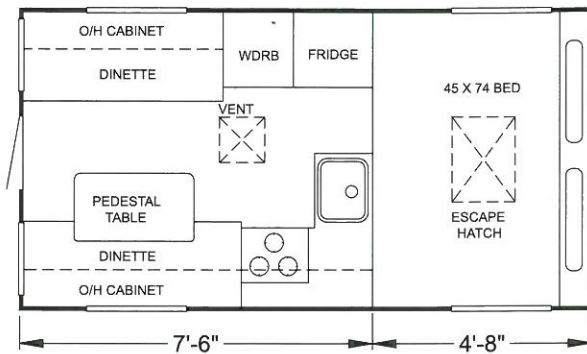
### *Strong...and handsome too!*

Adventurer interiors feature contemporary, hard-wearing fabrics and easy-care materials. Cabinet doors fit perfectly. Windows and entrances seal tight to keep out the harshest weather. Everywhere you look, you'll see meticulous attention to detail that will make you proud to own an Adventurer – today and for years to come.

### *Journey into space*

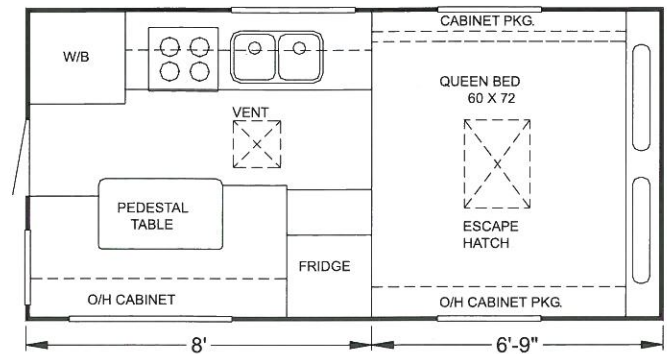
You can be sure that wherever the road leads in your Adventurer, you will always have room to move. That's because careful planning of living areas makes the most of the available space, including incorporating a functional slide-out dinette area. Then to keep it all neat and tidy, we build in generous storage for your possessions.





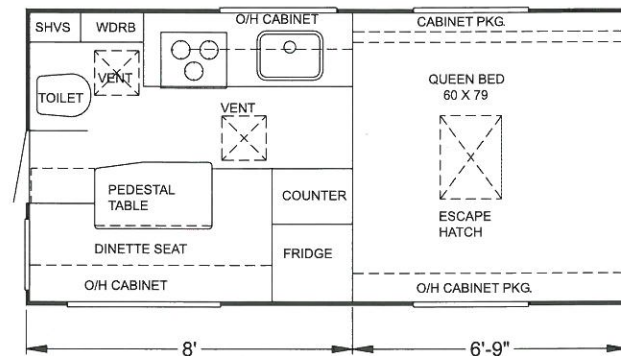
## 76R

Compact yet spacious floor plan with large windows makes this unit seem larger than any other import camper on the market.



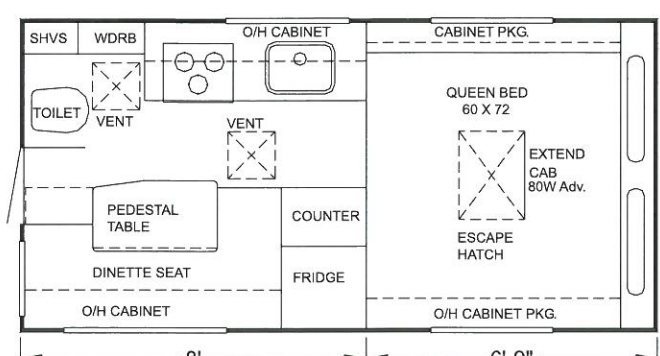
## 80HL

Built specifically for the person who has the basics in mind without compromising quality or structure. Truly a lightweight unit with an affordable price tag.



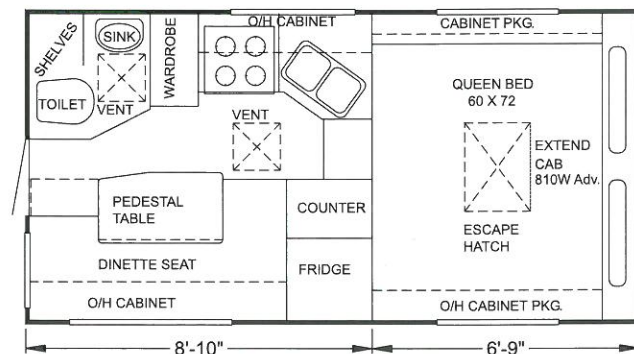
## 80WDAK

Built specifically for the emerging fleet of Dodge Dakota trucks, this camper maximizes the available wheel space while keeping weight to a minimum.



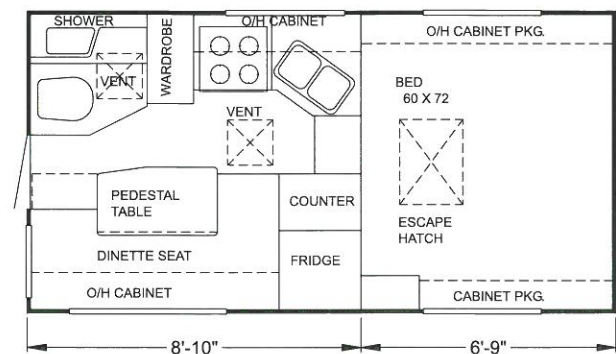
## 80W

The 80W is a popular camper in the half ton-truck market. The added washroom in this 8' camper increases the comfort and convenience of your camping experience while keeping the weight and price light.



## 810W

Functional floorplan at an affordable price summarizes the 810W. Perfect for the adventure off the beaten path whether it's hunting or fishing or just enjoying the less traveled roads. The 810W is also available in a short box version.

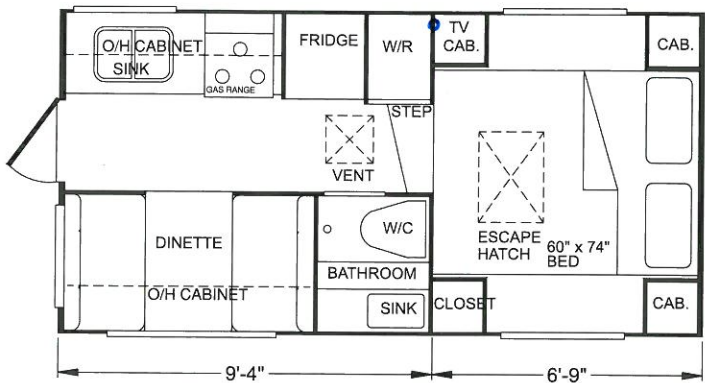


## 810WS

Conceived at our facility over 20 years ago, it's a floorplan the rest of the industry has enjoyed building. In the 810WS Adventurer, you get the original. The 810WS is also available with a short box option.

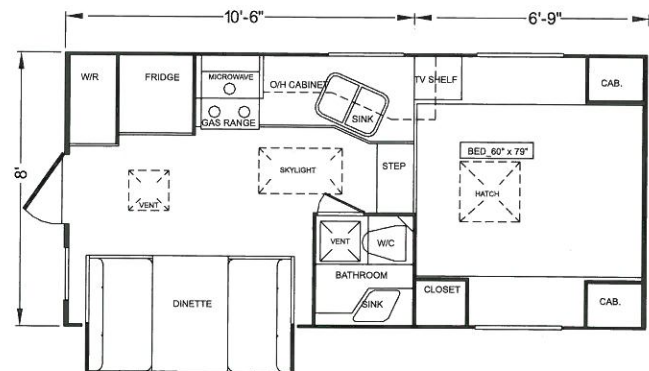
## 90FWS

This camper features a forward bath, in-floor tanks, a full side dinette, and over 20 cubic feet of outside storage. Dress it up and take it home with a smooth wall filon exterior.



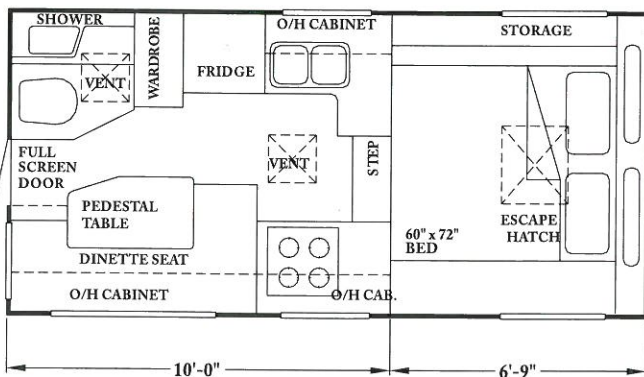
## 90RDS

90 rear dinette slide provides the reality of extra floor space, functional layout, modest weight, and an attractive price. Generous exterior storage with adequate room for a generator to allow travel to those remote locations.



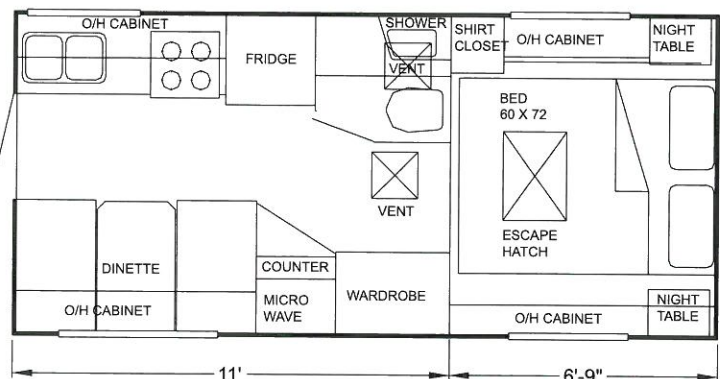
## 106SLD

New for 2001, the 106SLD delivers more for your money. More counter space, more open floor space, more exterior and interior storage and a forward bath offering a more balanced center of gravity. More means the most in comfortable camping and all around versatility.



## 100WS

Another tried and true design featuring a large L-shaped galley, generous storage space inside and out and still a comfortable size to allow you to tow your toys to and from the playground.



## 110SLE

The 11' Adventurer camper is all you need and more. The SLE package has as "standard" many of the options, which are found in the rest of the Adventurer line of campers. With over 28 cubic feet of outside storage and fully capable of housing a generator the 110SLE is the perfect choice for your 1 ton pickup.



	76R	80HL	80WDAK	80W	810W	810WS	90FWS	90 RDS	100WS	106 SLD	110SLE
<b>LIVING</b>											
Sleeping capacity	4	5	4	5	5	5	4	4	5	4	4
Deluxe cabinet package	N/A	0	0	0	0	S	S	S	S	S	S
Shirt closet with ext. cab package	N/A	0	N/A	0	0	0	S	S	0	S	S
Venetian blinds	N/A	0	0	0	0	0	0	S	0	S	0
Ext.cab with spring mattress	N/A	0	N/A	0	0	0	0	S	0	S	S
High density foam mattress	S	S	S	S	S	S	S	S	S	0	0
Upgrade spring mattress	0	0	0	0	0	0	N/A	N/A	0	S	N/A
Twin beds/spring mattress	N/A	N/A	N/A	N/A	0	0	0	0	0	0	0
Raised oak cabinet doors	0	0	0	0	0	0	0	0	0	0	0
Fold down cupboard bunk	N/A	0	0	0	0	0	N/A	N/A	0	N/A	N/A

## APPLIANCES

Domestic microwave	N/A	N/A	N/A	N/A	N/A	N/A	0	0	N/A	0	0
Roof air conditioning	0	0	0	0	0	0	0	0	0	0	0
DSI furnace	S	S	S	S	S	S	S	S	S	S	S
3 burner range top	S	S	S	S	S	S	0	0	0	0	0
3 burner range with oven	0	0	0	0	0	0	S	S	S	S	S
Bi-fold range cover	0	0	0	0	0	0	0	0	0	S	0
Domestic fridge	RM3333	RM3333	RM3333	RM3333	RM2452	RM2552	RM2652	RM2652	RM2552	RM2652	RM2652
Stainless steel sink	S	S	S	S	S	S	0	0	0	0	0
Double white acrylic sink	N/A	N/A	N/A	N/A	N/A	N/A	S	S	S	S	S
Sink cover/cutting board	S	S	S	S	S	S	S	S	S	S	S
Power range hood with light	S	S	S	S	S	S	S	S	S	S	S
Electronic systems monitor	N/A	N/A	N/A	N/A	N/A	0	0	S	0	S	0
Power roof vent in bathroom	N/A	N/A	0	0	0	0	0	S	0	S	S
Power convertor	15A	32A	30A	32A	32A	32A	32A	32A	32A	32A	32A
Battery compartment w/ charger	N/A	0	0	0	0	0	0	S	0	S	0
Pre-wire for a/c	0	0	0	0	0	0	S	S	S	S	S
Pre-wire for micro	N/A	N/A	N/A	N/A	N/A	N/A	S	S	N/A	S	S
Fresh water capacity	10.5US	17US	17US	17US	29US	24.5US	32.5US	32.5US	29US	36US	32US
	40 L	65 L	65 L	65 L	110 L	93 L	122 L	122 L	110 L	136 L	122 L
Grey water capacity	N/A	N/A	N/A	N/A	9US	14.5US	24.5US	24.5US	9.5US	20US	27US
					35 L	55 L	92 L	92 L	35 L	77 L	102 L
Waste tank capacity	N/A	N/A	10.5US	10.5US	13US	13US	14.5US	14.5US	17.5US	20US	24US
			40 L	40L	48 L	50 L	54 L	54 L	64 L	77 L	90 L
Heated holding tanks	N/A	N/A	N/A	N/A	N/A	0	S	S	N/A	S	S
Auto L.P. changeover & regulator	N/A	N/A	N/A	N/A	0	0	0	0	0	0	0
6 gal. hot water tank	N/A	0	0	0	0	S	S	S	S	0	S
DSI hot water heater	N/A	0	0	0	0	0	0	0	0	S	0
Water heater by-pass kit	N/A	0	0	0	0	0	0	0	0	0	0
Shower and hot water	N/A	N/A	N/A	N/A	N/A	S	S	S	S	S	S
Outside shower	N/A	0	0	0	0	0	0	0	0	S	0

## CONSTRUCTION

Heavy gauge baked enam. alum.	S	S	S	S	S	S	S	N/A	S	N/A	0
Fibreglass exterior	0	0	0	0	0	0	0	S	0	S	S
1" high density insulation	S	S	S	S	S	S	S	S	S	S	0
REFLECTIX insulation wrap	0	0	0	0	0	0	0	N/A	0	N/A	0
Rubber roof	0	0	0	0	0	0	0	0	0	0	0
Roof rack and ladder	S	S	S	S	S	S	S	S	S	S	S
Solar reflective windows	N/A	0	0	0	0	0	0	0	0	0	0
Thermopane windows	N/A	0	0	0	0	0	0	0	0	0	0
Skylight and blind	N/A	N/A	N/A	N/A	0	0	0	0	0	0	0
Hydraulic jacks	0	0	0	0	0	0	0	N/A	0	N/A	N/A
Atwood manual jacks	N/A	0	0	0	0	0	0	S	0	S	S
Atwood electric jacks	N/A	0	0	0	0	0	0	0	0	0	0
Rear and side awning	0	0	0	0	0	0	0	0	0	0	0

## SPECIFICATIONS

Floor length	7'6"	7'8"	8'0"	8'0"	8'10"	8'10"	9'4"	9'4"	10'	10'6"	11'
Exterior width	81"	90"	93"	93"	96"	96"	96"	96"	93"	96"	96"
Interior height	72"	75"	77"	77"	79"	79"	76"	76"	76"	76"	76"
Dry weight (lbs.)	1050	1499	1306	1470	1645	1776	1937	2441	1889	TBA	2859

\*80HL, 80W, 810W, 810WS, 100WS WITH OPTIONAL EXT. CAB ADD 90LBS. TO STANDARD CAB DRY WEIGHT. Dry weight does not include optional equipment.



	195B	226RL	236MD	19CB	19C	20RD	22FB
<b>LIVING</b>							
Sleeping capacity	4	6	6	6	5	4	4
Lift up bed with storage	N/A	S	S	S	S	S	S
Bedsprad, pillows, & shams	0	0	0	0	0	0	0
Venetian blinds in living area	S	S	S	S	S	S	S
Venetian blinds in bed area	0	0	0	0	0	0	0
Twin beds inner spring mattress	0	0	0	N/A	N/A	N/A	N/A
Oak cabinet doors	S	S	S	S	S	S	S
Color co-ordinated window valances	S	S	S	S	S	S	S
Fire extinguisher	S	S	S	S	S	S	S
Gas leak detector	0	0	0	0	0	0	0
CO2 detector	0	0	0	0	0	0	0
Smoke detector	S	S	S	S	S	S	S
Stereo- AM/FM cassette or CD	0	0	0	0	0	0	0
Bunk Beds	N/A	N/A	N/A	S	N/A	N/A	N/A
Dinette Slide	N/A	N/A	N/A	S	S	N/A	N/A

## APPLIANCES

Domestic microwave	0	0	0	0	0	0	0
Roof air conditioning	0	0	0	0	0	0	0
DSI furnace	16000	25000	25000	16000	16000	16000	25000
3 burner H.O. range w/ oven	S	S	S	S	S	S	S
Bi-fold range cover	0	0	0	0	0	0	0
Domestic fridge	RM2652	RM2652	RM2652	RM2652	RM2652	RM2652	RM2652
Double white acrylic sink	S	S	S	S	S	S	S
Sink cover/cutting board	S	S	S	S	S	S	S
Oak knife rack	S	S	S	S	S	S	S
Power range hood with light	S	S	S	S	S	S	S
Electronic systems monitor	S	S	S	S	S	S	S
Power roof vent in bathroom	S	S	S	S	S	S	S
Converter w/charger	32A	32A	32A	32A	32A	32A	32A
Pre-wire for A/C & microwave	S	S	S	S	S	S	S
Fresh water capacity	142 L	115 L	128 L	TBA	TBA	142 L	142 L
	37 US	30 US	34 US	TBA	TBA	37 US	37 US
Grey water capacity	90 L	110 L	110 L	TBA	TBA	90 L	110 L
	24 US	29 US	29 US	TBA	TBA	24 US	29 US
Waste tank capacity	83 L	102 L	102 L	TBA	TBA	83 L	102 L
	22 US	27 US	27 US	TBA	TBA	22 US	27 US
Auto L.P. changeover & regulator	0	0	0	0	0	0	0
5 gal. hot water tank	S	S	S	S	S	S	S
DSI hot water heater	0	0	0	0	0	0	0
Water heater by-pass kit	0	0	0	0	0	0	0
Outside shower	0	0	0	0	0	0	0
TV antenna	0	0	0	0	0	0	0

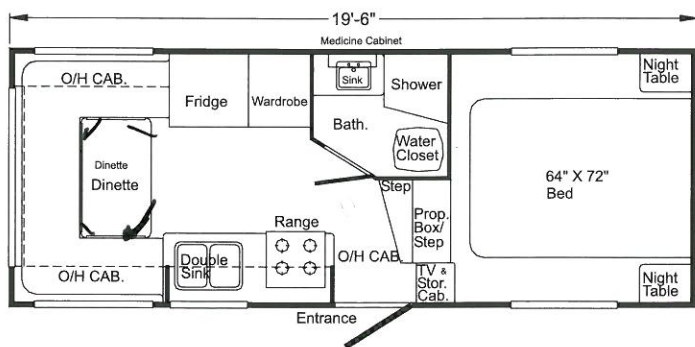
## CONSTRUCTION

Heavy gauge baked enam. alum.	S	S	S	S	S	S	S
Fibreglass exterior	0	0	0	0	0	0	0
1" high density insulation	S	S	S	S	S	S	S
Radius exterior storage doors	S	S	S	S	S	S	S
Extra insulation roof and back	0	0	0	0	0	0	0
Bowed roof truss system	S	S	S	S	S	S	S
One piece rubber roof with 3/8 roof decking	S	S	S	S	S	S	S
Roof rack and ladder	0	0	0	0	0	0	0
Radius windows	S	S	S	S	S	S	S
Solar reflective windows	0	0	0	0	0	0	0
Thermopane windows	0	0	0	0	0	0	0
Skylight and blind	0	0	0	0	0	0	0
Electric jacks	0	0	0	0	0	0	0
Rear stabilizer jacks	0	0	0	0	0	0	0
Spare tire carrier and cover	0	0	0	0	0	0	0
KD spruce construction	S	S	S	S	S	S	S

## SPECIFICATIONS

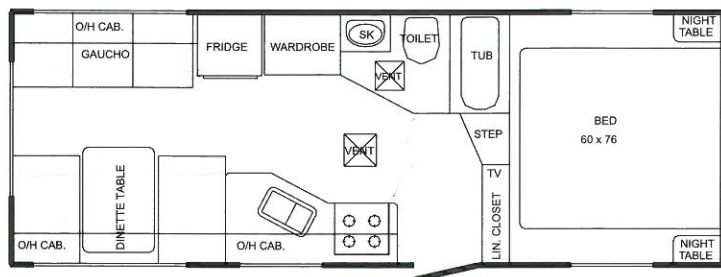
Exterior length	19'5"	22'6"	23'6"	22'6"	22'6"	21'5"	24'2"
Exterior width	7'3"	8'	8'	7'3"	7'3"	7'3"	8'
Exterior height incl. vents	8'11"	9'10"	9'10"	9'5"	9'5"	9'5"	9'6"
Dry weight (lbs)	3605	4393	4586	TBA	TBA	2947	3780
Hitch weight (lbs)	679	879	720	TBA	TBA	480	460
Dry GVWR (lbs)	7000	7000	7000	7000	7000	7000	7000

Note: some of the features displayed are optional.



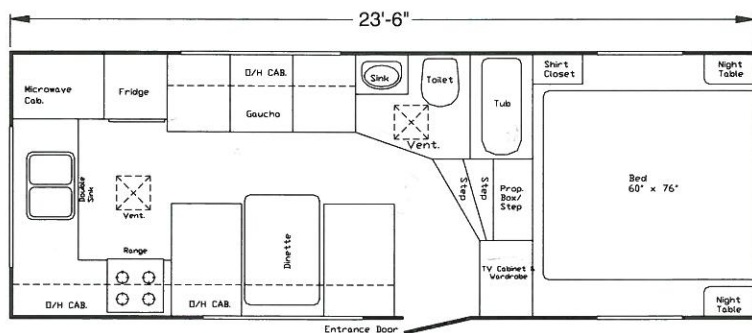
## 195B

The fifth wheel built specifically for the import truck market, this unit offers comfortable accommodation for up to four people. The large horseshoe dinette in the rear offers room for dining as well as relaxing after a long day on the trails.



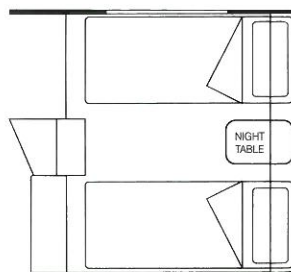
## 226RL

This fifth comes with a comfortable rear lounge and functional mid kitchen. A comfortable size to tow and able to fit into most camping spaces easily the 22.6 is a versatile member of the Adventurer family.



## 236MD

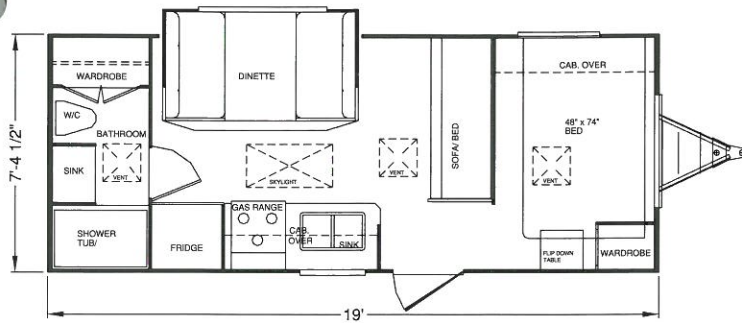
A time proven floorplan, the rear kitchen design presents the chef in the family with ample counter space while allowing the children to play at the table without inconvenience. The fold-down couch provides extra sleeping space when necessary.



## Twin bed option

Available in selected campers and all fifth wheels.



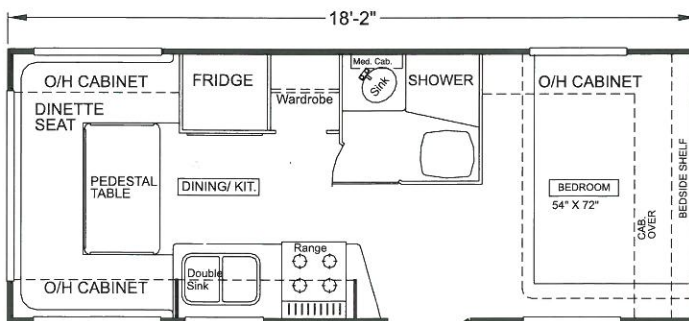
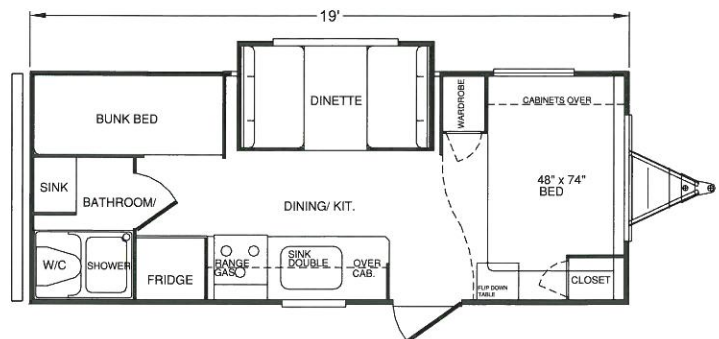


## 19C

Light enough to tow with vans, import trucks and small cars with the proper tow ratings, plus all the amenities of home. Pack up the food and bedding and you're off to explore the great outdoors!

## 19CB

The smallest! Built to sleep six, with bunk beds, slide out dinette and front bedroom with all the comforts of home. You and your family or friends can enjoy the freedom to venture where the heart desires.



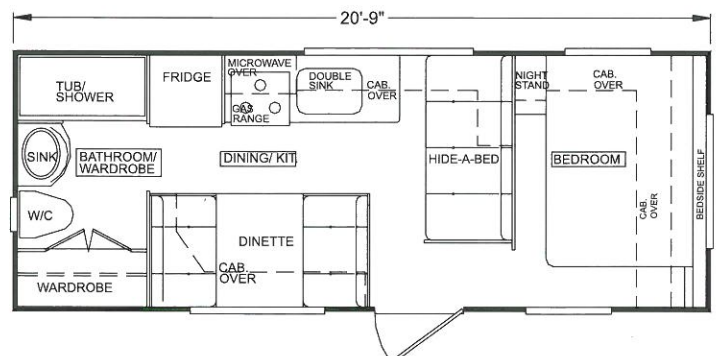
## 20RD

At 87" in width and 21.5' in length, the 20RD is perfect for the mini van or SUV market. Featuring a full bedroom up front and a spacious U shaped dinette; this travel trailer has everything needed to enjoy the great outdoors.

## 22FB

"Large" is the word that best describes this unit.

From the comfortable front bedroom, large windows, spacious cabinets and roomy bath to the large wardrobe, this trailer is sure to satisfy the person that wants to take everything, including the bathroom sink, with them.







Adventurer interiors feature contemporary, hard wearing fabrics and easy-care materials.

### *A proven track record*

We have been manufacturing Adventurer products in Abbotsford, B.C. for over thirty years. Beginning with campers and five employees in 1969, we have expanded our manufacturing to include fifth-wheels, travel trailers and motorhomes. This impressive growth is the result of our absolute commitment to customer satisfaction.

### *We're with you all the way*

Nobody, but nobody, takes greater care over the design and quality of their recreational units and vehicles. From frame to finish, excellence is built into every square inch of the Adventurer Series. Stringent quality controls ensure your investment is perfect at the time of purchase, and will last for years to come. You also have the peace-of-mind of knowing we stand by our products with an industry leading 3-year Protection Plus Warranty.





### 3-Year Limited Structural Warranty

All Adventurer products are warranted to be free of defects in materials, or workmanship, for 36 months from date of delivery to original purchaser and will be repaired or replaced, within this period, at Adventurer service centres.

Any component carrying its own guarantee shall be covered under conditions and terms of its manufacturer. This warranty does not cover damage caused by misuse, accident, alteration, improper maintenance or rental. Contact your dealer for details.

### Notice

Western Canada RV Ltd., whose policy is one of continuous improvement, reserves the right to change any of the specifications contained in this brochure without prior notice and without incurring any obligation.

If you have any questions about our product line, please don't hesitate to contact your dealer.

**Premium  
Quality  
Components  
by:**

