

Minnie Winnie®

2001 WINNEBAGO





Minnie Winnie 30V - Arbor with Portsmouth Oak Woodgrain

The couch and L-shaped galley slideout provide a relaxing haven and plenty of space. The standard day/night pleated shades and available dual-glazed thermo-insulated windows help maintain privacy and a cool environment on sunny days. Trackless, stain-resistant carpeting with full pad adds a plush feel. Stitchcraft designed furniture features durable, quality fabrics in patterns and colors pleasing to the eye.

**MAXIMUM COMFORT
IN A CONVENIENT PACKAGE.**

The 2001 Minnie Winnie is a Class C motor home that offers the kind of space and comfort you'd only expect to find in a Class A motor home. Additions for 2001 include the new 27P and 31C floorplans, available leather cab seats, a new, user-friendly service center* and electric remote exterior mirrors. A deluxe entertainment system available in the 27P and 31C includes a concert-quality, stereo 27-inch color TV and VCR. Enjoy upgraded living space amenities such as ceiling-ducted air conditioning, abundant storage, new beverage holders in the lounge area and a variety of convenient slideout floorplans. Available Ride-Rite® Rear Air Springs ensure a smooth ride.



Minnie Winnie 31C - Arbor

You'll experience extraordinary music and movies with the deluxe entertainment system available in the 27P and 31C. The 27-inch stereo TV and VCR is positioned on the passenger side for easy viewing, which leaves plenty of storage space in the center and driver side cabinets.

Minnie Winnie 29U - Calypso with Salem Cherry Woodgrain The L-shaped galley with corner pantry provides exceptional roominess. The forward facing couch separates the lounge from the galley and gives the interior an open feeling.

*Available only on the 27P and 31C.

Review Monitor

For added safety when backing up, select the available rearview monitor system. It includes a 6-inch screen mounted between the visors on an adjustable swivel base. The system also includes one-way audio.



StoreMore® Hydraulic Slideout System

Extend your living space, then unload your gear. Exterior slideout compartments extend with the slideout room to make loading and unloading easier anytime. Large storage compartments accommodate bulky and oversized items. (StoreMore available on the 27P—front slideout only—and 31C.)



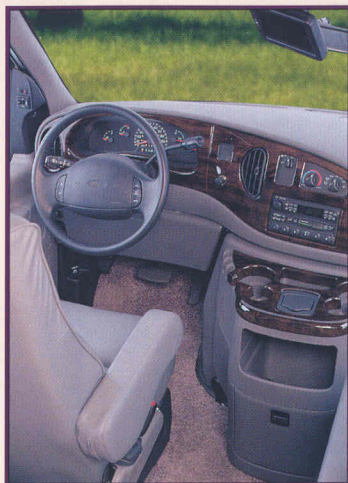
Onan® MicroQuiet™ Generator

Wherever you travel, you can still enjoy all the conveniences of home with the available Onan MicroQuiet generator. This quiet, efficient generator supplies 4,000 watts of power to the Minnie Winnie's 110-volt wiring system.



Ergonomic Cockpit Design

The driver's area features power windows and door locks and easy to read instrumentation. Full size cupholders, radio controls, coin trays and storage compartments are all within easy reach. The cab seats feature lumbar support, and are available in leather. The available woodgrain-applique offers another touch of class.



Galley (30V)

A roomy kitchen area is a defining feature of any home. That's why this galley includes an appliance garage and flip-up countertop that make intelligent use of space. Stainless steel recessed double sink with single-control faucet, microwave, large double-door refrigerator/freezer and Magic Chef® sealed three-burner range* with oven are all standard.

Pantry (27P)

Bedroom (27P)

The bedroom slideout creates room for a large, double-door, mirrored wardrobe as well as a desk/vanity area that can accommodate a laptop computer.



Door Latch and Assist Handle

Enter and exit the Minnie Winnie with ease. The new latch assembly is secure and easy to operate. And the convenient exterior assist handle makes exit and entry easier.



Monitor Panel

Quickly check vital functions such as tank levels, LP gas and battery power at a glance. The new flush-mounted panel is conveniently located in the galley area.



Exterior Mirrors

Standard exterior mirrors are electric remote with defrost for maximum convenience and operation.



Rain Gutter

Minnie Winnie's built-in rain gutter helps keep things dry by channeling water to the front and rear of the coach.



Wash Station

The exterior wash station with pump switch and lockable door is a welcome feature at the beach, campsite or anywhere you need a quick cleanup.



Exterior Entertainment Center

The great outdoors just gets better with this available exterior center. Enjoy AM/FM stereo reception, cassette or available CD, or plug in a TV and watch the big game.



Cabinet Pulls

Large 4-inch pulls on drawers and doors provide a larger grip for easier opening and closing.



Your Favorite Programs on Satellite TV

Select the available satellite dish and digital elevation sensor or choose to upgrade later. Preparing for the dish and elevation sensor comes standard with Minnie Winnie.

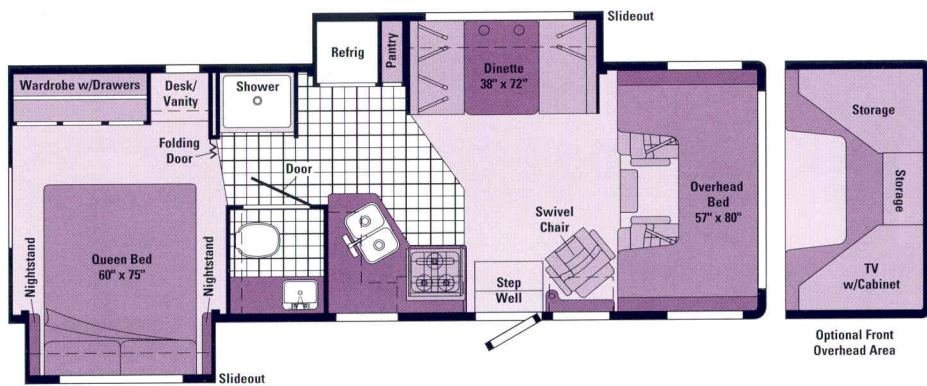
*Sealed burner range not available on 30V in Canada.





WINNEBAGO MINNIE WINNIE 2001 FLOORPLAN OPTIONS

MINNIE WINNIE INTERIORS

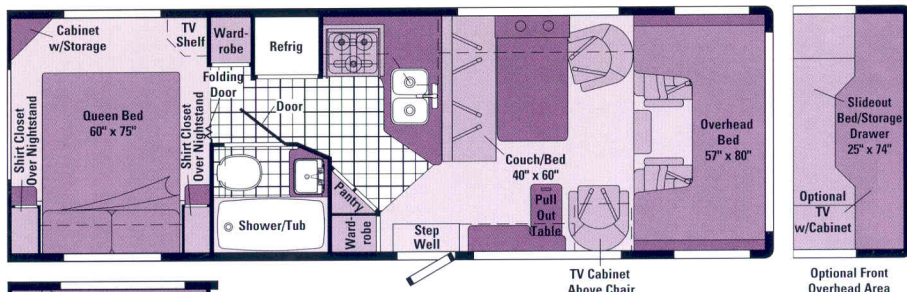
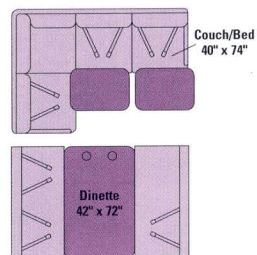


27P NEW

- Double slideout floorplan
- **STOREMORE** dinette/refrigerator slideout
- Large, angled galley
- Large bedroom wardrobe with drawers and a desk/vanity area
- Available front overhead cabinet with TV and storage



Arbor



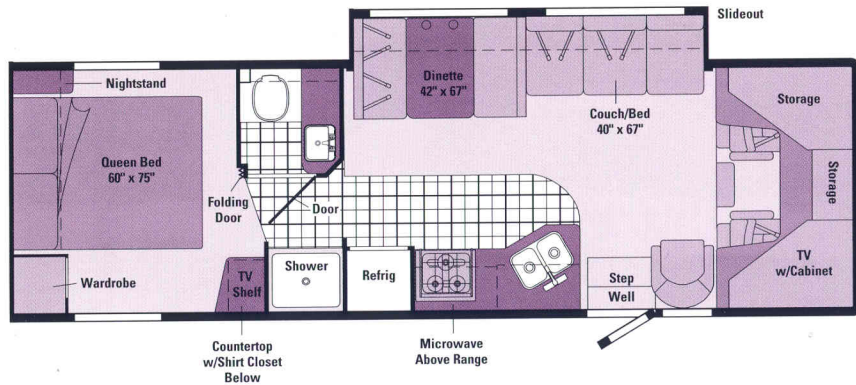
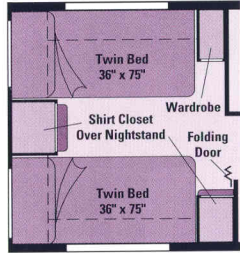
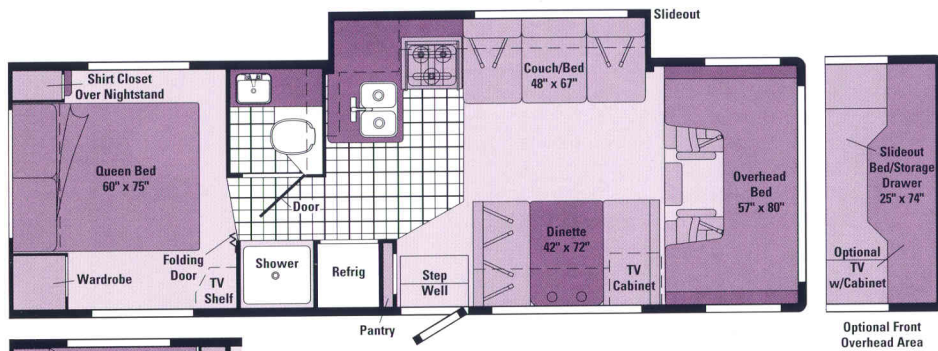
29U

- Large shower/tub with new folding shower door
- L-shaped galley with corner pantry
- Several furniture options in the living area
- Queen or twin beds available



Calypso





Vinyl Floorcovering



Seat Belts

Note: Dimensions shown are for sleeping space only and dashed lines denote overhead storage areas.

30V

- Galley/couch slideout creates more living space
- Wardrobe and shirt closet storage in bedroom area
- Textured glass shower door
- Queen or twin beds available

Portsmouth Oak Woodgrain

Salem Cherry Woodgrain

31C NEW

- **STOREMORE** dinette/couch slideout
- Roomy lounge, galley and bedroom areas
- Textured glass shower door
- Front overhead cabinet with 25-inch TV and storage



WINNEBAGO MINNIE WINNIE 2001 SPECIFICATIONS

| | 27P | 29U | 30V | 31C |
|------------------------------------|----------------|--------------------|----------------|----------------|
| Length | 27'11" | 29'4" | 30'2" | 31'4" |
| Exterior Height w/AC* | 11'7" | 11'8" | 11'7" | 11'7" |
| Exterior Width ^Δ | 8'3.9" | 8'3.9" | 8'3.9" | 8'3.9" |
| Exterior Storage | 40 cu. ft. | 83 cu. ft. | 77 cu. ft. | 69 cu. ft. |
| Interior Height | 6'7" | 6'7" | 6'7" | 6'7" |
| Interior Width | 8' | 8' | 8' | 8' |
| Fresh Water Capacity w/Heater* | 41 gal. | 37 gal. | 41 gal. | 41 gal. |
| Holding Tank Capacity - Black/Gray | 42/35 gal. | 34/31 gal. | 35/38 gal. | 35/38 gal. |
| LP Capacity [∅] | 18 gal. | 18 gal. | 18 gal. | 18 gal. |
| Fuel Capacity | 55 gal. | 55 gal. | 55 gal. | 55 gal. |
| GVWR - Ford/Ford Diesel (CA) | 14,050 lbs./NA | 14,050/14,000 lbs. | 14,050 lbs./NA | 14,050 lbs./NA |
| GVWR - Ford Diesel (49 States) | NA | 14,050 lbs. | NA | NA |
| Wheelbase | 190" | 190" | 205" | 219" |

Standard - S Optional - O

27P 29U 30V 31C

27P 29U 30V 31C

AUTOMOTIVE/CHASSIS

| | | | | |
|--|---|---|---|---|
| Spare Tire, Tire Tool wrench, Trailer Hitch 3500# draw bar/350# maximum vertical tongue weight & wiring, Wheel Covers | S | S | S | S |
| Auxiliary Ride-Rite® Rear Air Springs | O | O | O | O |
| Chassis - Ford E450 6.8L Super-Duty V-10 306 hp, SOHC Triton™ engine, 130-amp alternator, dual airbags, 4-wheel anti-lock brakes, automatic 4-speed overdrive transmission | S | S | S | S |
| Chassis - Ford E450 7.3L Power Stroke® 215 hp, diesel engine, 130-amp alternator, dual airbags, 4-wheel anti-lock brakes, automatic 4-speed overdrive transmission | O | | | |
| Stainless Steel Wheel Liners | O | O | O | O |

CAB AREA & DRIVER CONVENIENCES

| | | | | |
|--|---|---|---|---|
| Beverage Tray, Cab Divider Curtain, Cab Seats w/Seat Belts 3-point shoulder & lap w/retractors, armrests, fixed lumbar support, multi-adjustable slide/recline, fabric covered, Cigarette Lighter/12-Volt Electrical Supply, Cruise Control, Domelight, Hood Release, Intermittent Windshield Wipers, Power Assist Steering w/Tilt Wheel, Power Door Locks & Windows, Rubber Driver & Passenger Floor Mats, Sunvisors (2), Trim Panels driver & passenger doors (chassis supplied) w/map pocket | S | S | S | S |
| Cab Seats leather insert w/vinyl surround | O | O | O | O |
| Instrument Panel Woodgrain Appliqués | O | O | O | O |
| Rearview Monitor System w/single camera & 1-way audio, Audiovox® | O | O | O | O |

ENTERTAINMENT

| | | | | |
|--|---|---|---|---|
| Radio (Cab) AM/FM stereo cassette, roof-mounted flexible rubber antenna, speakers (4), Satellite System Ready, TV Enhancement Package antenna (amplified), 12-volt receptacles, interior jacks, coax wiring, cable input, bedroom TV shelf or stand* | S | S | S | S |
| 13" 12-Volt Color TV & VCP* w/remotes & swivel/slide shelf | O | O | O | |
| 25" AC Color TV w/remote & video selection system | O | | | S |
| 25" AC Color TV w/remote, video selection system & single front overhead bunk | O | O | | |
| Deluxe Entertainment System* AC 27" stereo color TV, stereo VCR, amplifier, surround sound speakers, video selection system, cabinet | O | | | O |
| Exterior Entertainment Center w/Cassette or CD Player | O | O | O | O |

BATH

| | | | | |
|---|---|---|---|---|
| 3-Rod Towel Rack mounted to door, Dual-control Lavatory Faucet, Dual-control Shower Faucet w/Flexible Shower Head, Lavatory Cabinet, Medicine Cabinet, Power Roof Vent, Rectangular Sink, Removable Clothes Rod shower, Shower Light, Skylight, Tissue Holder, Toilet w/Foot Pedal Flush | S | S | S | S |
| Magazine Rack | S | | S | S |
| Shower | S | | S | S |
| Shower/Tub | | S | | |
| Shower Door folding | | S | | |
| Shower Door textured glass | S | | S | S |
| Towel Bar | S | | S | S |
| Towel Ring | S | S | S | |
| Wall Mirror | S | | S | S |

BEDROOM

| | | | | |
|--|---|---|---|---|
| Bedsprad, Decorative Wall Border, Innerspring Mattress access to storage below, Nonpowered Roof Vent, Pillow Shams, Reading Lights, Throw Pillow | S | S | S | S |
| Decorative Wall Lamp | | | | S |
| Headboard | | | | S |
| Queen Bed | S | S | S | S |
| Twin Beds | | O | O | |
| Desk/Vanity Area | S | | | |

EXTERIOR

| | | | | |
|--|---|---|---|---|
| AC Duplex Receptacle, Awning Rails w/rain gutter, Double-door Step electric w/door jamb switch, Entrance Door main w/screen door, deadbolt lock, Fiberglass Running Boards, Graphics Package Wintergreen Metallic recommended w/Calypto Or Medium Titanium Metallic recommended w/Arbor, Ladder, Mirrors platemount, electric remote w/defrost, Porch Light w/interior switch, Rear Mudflaps, Service Center Light, Sidewall Skin 1-piece fiberglass, smooth, Storage Compartments* lights | S | S | S | S |
|--|---|---|---|---|

speakers (2), lock compartment

| | | | | |
|--|---|---|---|---|
| Exterior Entertainment Center Table* removable | 0 | 0 | 0 | 0 |
| Radio (Cab) AM/FM stereo CD | 0 | 0 | 0 | 0 |
| Satellite Dish Antenna RV digital, digital elevation sensing unit | 0 | 0 | 0 | 0 |
| VCR w/Remote* | 0 | 0 | 0 | 0 |

INTERIOR

| | | | | |
|--|---|---|---|---|
| Ceiling Lights incandescent w/wall switches, DC Receptacle dining area, Day/Night Pleated Shades, Decorative Clock, Textured Fabric Ceiling, Wardrobe Cabinet carpeted floor, clothes rod | S | S | S | S |
| Cupholder(s) | S | S | S | S |
| Decorative Mirror dinette area | | | | S |
| Decorative Wall Lamp lounge/galley area | | S | | S |
| Dual-Glazed, Thermo-Insulated Windows | 0 | 0 | 0 | 0 |
| Front Overhead Bed mattress, sliding side windows, pleated privacy curtain, side storage cabinets | S | S | S | |
| Front Overhead Bunk Ladder* | 0 | 0 | 0 | |
| Front Overhead Bunk Window delete | 0 | 0 | 0 | |

CABINetry

| | | | | |
|--|---|---|---|---|
| Salem Cherry or Portsmouth Oak Woodgrain stile-and-rail construction raised panel inserts on upper doors and flat panel inserts on lower doors | S | S | S | S |
|--|---|---|---|---|

COUNTERTOPS

| | | | | |
|---|---|---|---|---|
| Laminate w/wood-look T-mold edging | S | S | S | S |
|---|---|---|---|---|

FLOORCOVERING

| | | | | |
|--|---|---|---|---|
| Carpeting w/Pad, Vinyl Floorcovering bath, galley | S | S | S | S |
|--|---|---|---|---|

FURNITURE

| | | | | |
|---|---|---|---|---|
| Couch | | S | S | |
| Couch forward facing | | S | | |
| Dinette access to storage below seats | S | 0 | S | S |
| L-Shaped Sectional Couch | | 0 | | |
| Lounge Chair | | S | | S |
| Lounge Chair (Hoop Base) w/magazine rack | | S | | |
| Lounge Chairs (2) w/pull-up table | | 0 | | |

GALLEY

| | | | | |
|---|---|---|---|---|
| Decorative Wall Border, Double Stainless Steel Sink sink cover (countertop material), Microwave Oven, Range* 3-burner oven, glass door, sealed burners, Magic Chef*, Range Hood w/light & fan, Refrigerator/Freezer large double-door, Norcold*, Single-control Faucet | S | S | S | S |
| Appliance Storage Cabinet | | | | S |
| Coffeemaker | 0 | 0 | 0 | 0 |
| Countertop Flip-up Extension | S | | S | S |
| Galley Countertop Rail | | | S | |
| Glass Partition end of galley | | | S | |
| Pantry | S | S | S | |
| Spice Rack | | S | | |
| Water Purification System | 0 | 0 | 0 | 0 |

SYSTEMS

| | | | | |
|--|---|---|---|---|
| 30-Amp 25' Power Cord, AC/DC Electrical Distribution System AC & DC breaker panels, 45-amp converter/charger, Air Conditioning 14,800 BTU, ceiling-ducted roof air, Automatic Dual Battery Charge Control, Automotive Heater/Air Conditioner, Auxiliary Start Circuit, City Water Hookup, Coach Battery(ies) 2-deep cycle,* Coach Battery Disconnect System, Exterior Wash Station, Furnace 30,000 BTU, Suburban,* low profile, Generator Prep Kit, Heated Holding Tank Compartment, LP Tank permanent mount w/gauge, Monitor Panel wall mount, battery condition gauge, generator hourmeter gauge,* generator start/stop switch,* holding tank levels, LP tank level, water heater switch, water heater on light & pilot indicator light, water pump switch, water tank level, Nonpowered Roof Vent bedroom, Powered Ventilator Fan bath, Service Center(s) cable TV input, city water hookup/tank diverter fill, drainage valves, exterior wash station w/pump switch, power cord, Sewer Hose, Water Heater 6 gallon electronic ignition, LP gas, Water Heater Winterization Bypass Valve manual, Water Pump demand, Water System Winterizing Valve manual, Water Tank Drain, Water Tank Fill w/Locking Door gravity | S | S | S | S |
| Coach Battery* deep cycle (diesel chassis only) | | | | S |
| Generator* 3,600 watt, Onan* MicroQuiet™, LP | | | | 0 |
| Generator* 4,000 watt, Onan MicroQuiet, gas | | 0 | 0 | 0 |
| Home Comfort Plus Package* roof AC heat pump, auxiliary automotive heater, nonpowered insulated roof vent (bedroom), powered insulated ventilator fans (2) | | 0 | 0 | 0 |
| Inverter* DC/AC, 130 watt | | 0 | 0 | 0 |
| Nonpowered Roof Vent* front overhead bunk | | S | S | |
| Nonpowered Roof Vent* lounge | | S | | S |
| Powered Ventilator Fan* front overhead bunk | | 0 | 0 | |
| Powered Ventilator Fan* lounge | | 0 | | 0 |
| Water Heater electronic ignition, LP gas w/Motoraid | | | 0 | |
| Water Heater electronic ignition, 120 vac/LP gas w/Motoraid, includes energy management system | | 0 | | 0 |

SLIDEOUT

| | | | | |
|---|---|--|--|---|
| Slideout Room (front driver side), slideroom cover (slideout section), Slide-N-Ride* | S | | | S |
| Slideout Room (front driver side), slideroom cover (slideout section) | | | | S |
| Slideout Room (rear passenger side), slideroom cover (slideout section) | S | | | |

SAFETY

| | | | | |
|---|---|---|---|---|
| 3-Point Cab Seat Belts, 10 B.C. Fire Extinguisher, Bumpers front & rear, Carbon Monoxide Detector/Alarm, Courtesy Light(s) w/Wall Switch(es), Driver & Passenger Second Generation Airbags, Escape Window, Exterior Assist Handle, Ground Fault Interrupter, High-mount Rear Brake Light, Interior Assist Strap, LPG Leak Detector/Alarm, Laminated Safety Glass Windshield, Lap Belts In Selected Areas, Smoke Detector/Alarm | S | S | S | S |
| Interior Wood Assist Handle | | | | S |

WARRANTY

| | | | | |
|--|---|---|---|---|
| 12-Month/15,000-Mile Basic Warranty, 36-Month/36,000-Mile Warranty On Structure,** 10-Year Limited Parts & Labor Warranty On Roof | S | S | S | S |
|--|---|---|---|---|

• The height of each model is based on the curb weight of a typically equipped unit on the standard chassis. The actual height of your vehicle may vary by as much as 2" depending on chassis or equipment variations.
 Δ Minnie Winnie floorplans feature a widebody design—over 96". In making your purchase decision, you should be aware that some states restrict access on some or all state roads to 96" in body width. Before making your purchase decision, you should confirm the road usage laws in the states of interest to you. *Not all items available in combination. See dealer for details. NA=Not Available
 ∅ Capacities shown are tank manufacturer's listed water capacity (W.C.). Actual filled LP capacity is 80% of listing due to overfilling prevention device on tank. **See your dealer for complete warranty documentation information.
 Winnebago Industries' continuing program of product improvement makes specifications, equipment, model availability and prices subject to change without notice. Comparisons to other motor homes are based on the most recent information available.

NOT ALL MOTOR HOMES ARE EQUAL.

When you purchase a Winnebago Minnie Winnie you benefit from unique advantages, beginning with one of the most comprehensive warranty programs in the industry. It includes a 12-month/15,000-mile basic protection plan, 36-month/36,000-mile warranty on the structure and a standard 10-year limited parts and labor warranty on the roof.

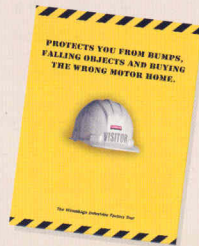


Mechanical emergency while on vacation? Go to your nearest Winnebago Industries dealer. TripSaver guarantees that qualifying, in-stock emergency warranty repair parts will be air-shipped from our factory within 24 hours. Plus, every new purchase comes with a one-year membership in our Premium Roadside Assistance Program, a 24-hour nationwide plan that covers road emergencies with free services like jump starts, tire changes, fuel delivery and lockout assistance.



In addition, Winnebago Industries vehicle owners are eligible to enroll in the Winnebago-Itasca Travelers (WIT) Club. As a member, you'll enjoy many benefits, including mail forwarding, trip planning, rallies, caravans and more.

To learn more about what separates our motor homes from others, ask for this free guide next time you visit your Winnebago Industries dealer. It explains our superior manufacturing process. Use it to learn more about important safety and quality considerations as you shop for the motor home that's best for you.



Visit us at www.winnebagoind.com
Seat belts are your most important hookup. Always buckle up.

QUALITY FROM THE GROUND UP.

FROM A SOLID SUPERSTRUCTURE™...

We start with a sturdy steel and extruded aluminum substructure, using interlocking joint construction to join the sturdy floor, roof and sidewalls into one solid unit. Sidewalls and backwalls use our patented Thermo-Panel® construction process, with pressure-bond exterior skin, lauan backing and block-foam insulation. Appliances are solidly secured into embedded steel plates.

Built to last, key steel components are subjected to a 12-stage rustproofing process that cleans, preps, and electrostatically coats components inside and out. With a focus on quality, each new vehicle carries a structural warranty of 3 years or 36,000 miles.



...TO A MORE DURABLE ROOF

Unlike rubber roofs, our crowned one-piece seamless fiberglass Thermo-Panel® roof minimizes tearing and snagging. It also resists fading, chalking and deterioration, and expansion/contraction is minimal compared to rubber roofs.

In fact, our roof is so durable, it's backed by a 10-year limited warranty for parts and labor.

