

Mountaineer Montana™

"Built by People who know RVing"

2002



You Deserve It.



This spacious Desert Sunset 315RLS floorplan features the expanse of our Mountain View windows. Mountaineer's 6'8" sidewalls and extra-tall sliderooms create an open feeling reminiscent of home.



All Mountaineer bathrooms feature large sinks, roomy medicine cabinets and ample storage.

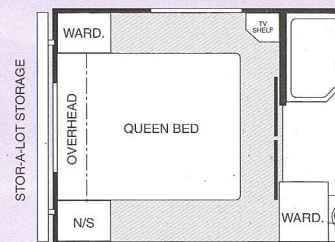
Comfort . . .

Montana Mountaineer is built by people who know RVing. We have created the Mountaineer with all of the desirable features, down to the smallest detail, that we know we would like in our own travel trailer. You will recognize the care we have taken to make the Mountaineer the travel trailer of your dreams — meticulous attention to detail inside and out, stunning exterior decor, and the easy-to-maintain, stylish interior design. Mountaineer is available in five floorplans and three beautiful color schemes — Desert Sunset, Spring Floral, Country Blue.

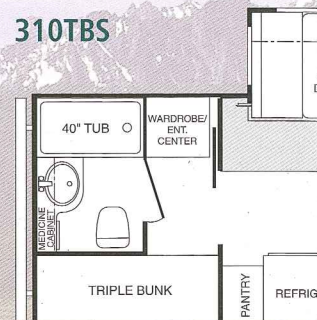


The Mountaineer 325FKBS floorplan, shown above in the Spring Floral color scheme, features a front kitchen with generous counter space. The solid oak cabinet doors with cathedral tops, large overhead cabinets and oak-paneled refrigerator door add the richness of warm wood tones to the dining area. The designer floor covering completes the residential ambience.

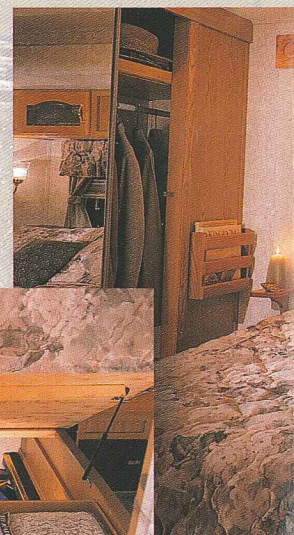
305FKS



310TBS



Mountaineer's slide-out bedroom, right, offers a combination of discriminating luxury, user-friendly details and enormous underbed storage (below).



Interior Features

Living Area

- 6'8" interior head room
- 28-oz. carpeting and upholstery with fabric protector
- Entertainment center
- Tall slide room with overhead cabinets
- Swivel rocker (n/a 310)
- Decorative jack knife sofa
- Mini blinds
- 12V rechargeable flashlight near exit*

Kitchen

- Solid oak cabinet doors with cathedral tops
- Oak edge counter top
- Heavy duty steel drawer glides with ball bearing rollers
- Cabinet toe kicks*
- Lighted range hood with fan
- Wide deep drawers – real wood
- Residential-size overhead cabinets
- Sink cover cutting board (1)

- Garbage can
- Oak knife holder in countertop
- Silverware tray
- White acrylic kitchen sink with high-arch faucet*
- Fluorescent light above sink

Bathroom

- Thetford foot pedal toilet*
- Larger residential-size bath sink
- Corner shower w/glass enclosure (n/a 310)
- Extra-large bathtub (310 only)
- Decorative shower curtain (310 only)
- Medicine cabinet – large mirrored

Bedroom

- Deluxe innerspring mattress*
- Quilted bedspread and 2 pillow shams
- Overhead TV shelf and outlet
- Huge amount of storage under bed

Appliances

- Double-door refrigerator
- RV microwave oven**
- 13,500 BTU ducted roof air conditioner with wall mount thermostat and "Quick Cool"***
- High-output range with automatic ignitor and 22" oven*
- TV antenna and booster**

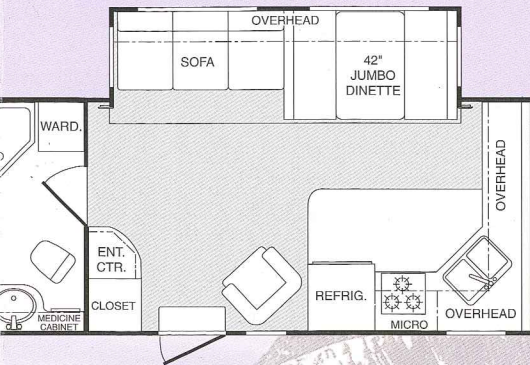
Utilities

- Water
- 6-gall
- Syster
- 45-an
- 30-an
- Auton
- in-floc
- Phone
- Cable

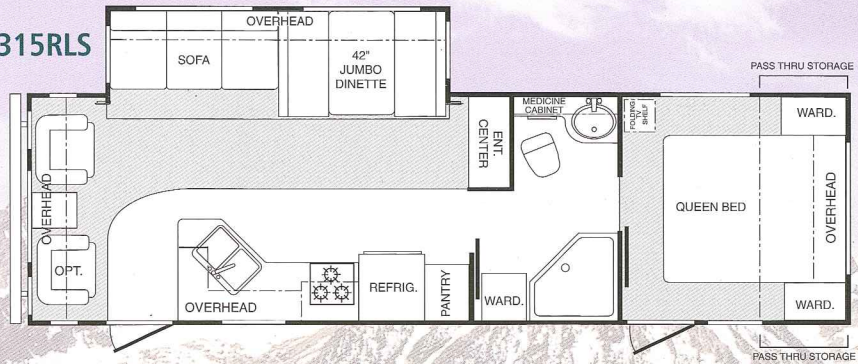
* Customer Convenience Group

**Moving to Montana I

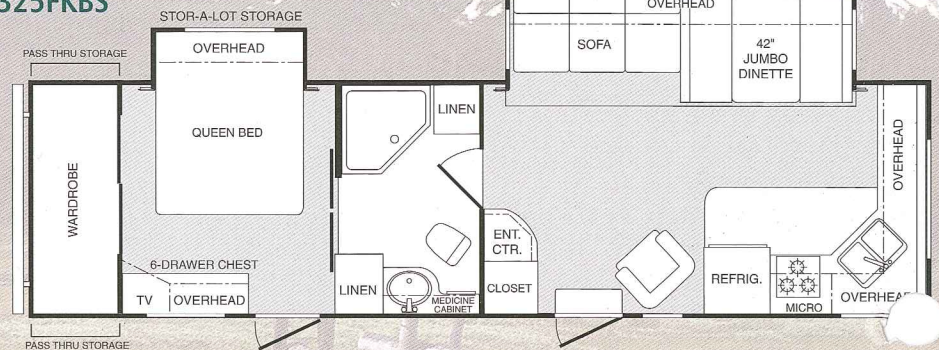
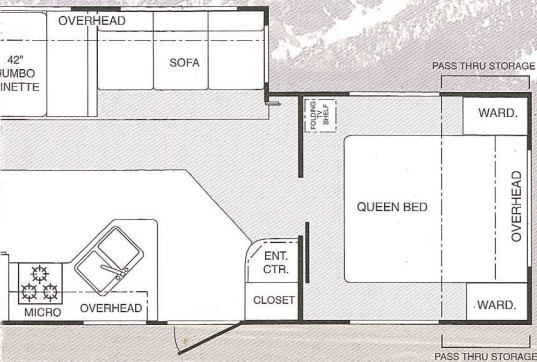
Floorplans



315RLS



325FKBS



335RLBS



Specifications

MODEL NAME	305FKS	310TBS	315RLS	325FKBS	335RLBS*
GVWR	9840	9540	9520	9600	9760
GROSS DRY WT. (UVW)	6430	6745	6940	7180	7440
CARRYING CAPACITY	3410	2795	2580	2420	2320
HITCH	1040	740	720	800	900
EXTERIOR LENGTH	31' 3"	31' 9"	32' 9"	33' 4"	34' 11"
EXTERIOR HEIGHT — TOP of A/C	10' 11"	10' 11"	10' 11"	10' 11"	10' 11"
FRESH WATER CAPACITY	45	45	45	45	45
WASTE WATER CAPACITY	32	32	32	32	32
GREY WATER CAPACITY	64	32	64	64	64

* Specifications for the 335RLBS were estimated at time of printing

Due to continuous product improvement, modifications may be made without prior notification or obligation. UNLOADED-VEHICLE-WEIGHT is calculated as base unit with standard equipment only.

Towability . . .



Montana Mountaineer's Total Surround® **welded** aluminum framing includes the walls, roof and floor. The benefits of aluminum framing versus wood framing are many. First, we especially like the tremendous weight savings the aluminum provides. Montana products are well known for their great towing characteristics, and one reason is that we are about 600 – 1,000 lbs. lighter than most wood-framed trailers.

Exterior Features

- Welded total-aluminum-framed walls, roof and floor
- 2" laminated fiberglass exterior walls
- Molded fiberglass front end cap
- Block foam insulation in sidewall (R-9)
- Residential fiberglass insulation in floor and roof (R-7)
- Extra wide 30" entrance door
- Radius baggage doors with inside fasteners
- Smooth-operating, easy-to-use entrance steps
- Radius wrap lower walls
- "Easy-to-Lube" axles*
- Deluxe patio awning**
- Enclosed and heated, below-floor fresh water tank
- One-piece, fully decked rubber roof
- Tinted windows*
- Aluminum bumper cover
- Outstanding exterior storage
- LP bottle cover*

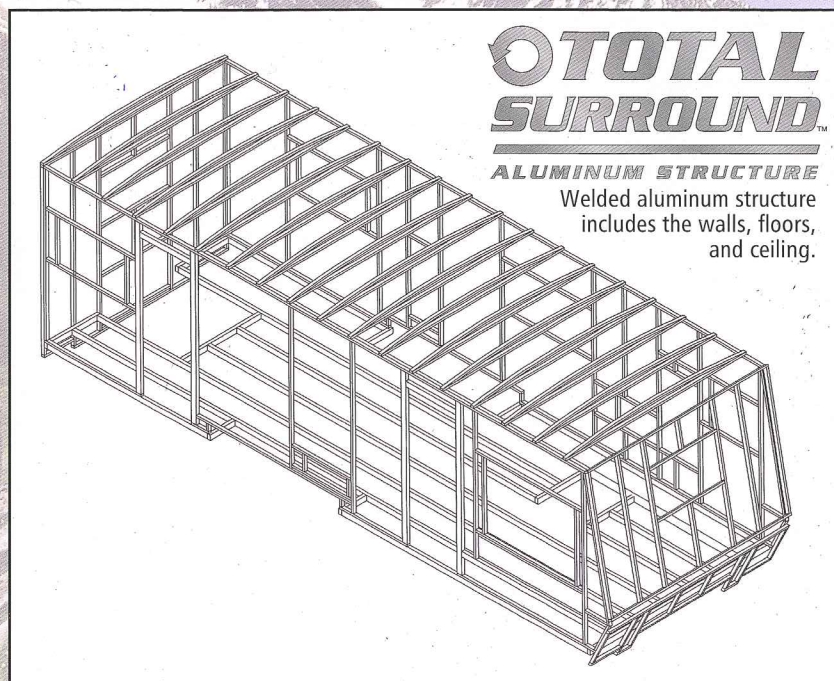
* Customer Convenience Group

**Moving to Montana Package

Structural Integrity . . .

Another significant benefit to aluminum is the long life and structural integrity it provides. Aluminum is not damaged by water and its strength is legendary in aircraft usage. Although aluminum is more costly than wood, it is simply the ideal raw material for building a trailer that will offer years of trouble-free use.

Adding to the benefits of aluminum is a construction process that is second to none. We laminate our sidewalls with block foam insulation creating a wall that is 2" thick. This provides a combination of superior strength, lighter weight and higher insulative values.





Safety grab handle and easy-to-use triple entry step.



Easy-To-Lube AL-KO™ Axles make it simple to maintain your Montana suspension.

OPTIONS

Exterior

- Power tongue jack
- Safety glass windows
- Slide awning — main room
- Slide awning — bedroom
- Double entry step at second door
- 15" spare tire and carrier
- Heated holding tanks
- Outside shower
- Rear roof ladder

Decor

- Day/night shades
- Second swivel rocker
- Free-standing dinette with 4 chairs
- Hide-a-bed sofa
- Planked kitchen floor
- Second sink cover

Equipment

- 15,000 BTU A/C with "Quick Cool"
- Bedroom 13,500 BTU A/C¹
- Wire and frame for bedroom A/C
- Fantastic vent fan (kitchen, bedroom, living room or bath)
- Large double-door refrigerator
- Large double-door refrigerator with icemaker
- 10-gal. gas/electric water heater

¹ Cannot be run at same time as primary air conditioner.



Huge, fully-lined, "Stor-A-Lot" storage compartment with exterior and under bed interior access.

"Moving to Montana" Package

- 13,500 BTU ducted A/C
- Microwave
- Awning
- TV antenna
- Customer Convenience Group

Value Package

- Crank-down stabilizer jacks (4)
- Fold-away entry/exit handle
- Security light, door side
- Security light, road side
- Skydome over tub or shower
- Raised-oak refrigerator front
- Range cover
- Bookshelf, AM/FM, CD, Stereo Cassette

The Success of Montana Mountaineer

When we began building Montana travel trailers and fifth wheels four years ago, our goal was to be the absolute best. By constantly looking for little ways to make the products perform better, Montana has continually evolved and improved.

Over the years, we have earned our customers' confidence, and I am proud to announce that Montana was recently honored as the top-selling high-line travel trailer and fifth wheel in North America.

Our formula for this success has been straightforward. From the beginning, we have believed that our customers should have a large voice

in our design, styling and features. We listen very closely to owner feedback and respond quickly.

Further, we run our company with minimal "corporate overhead," allowing us to offer more features in the Montana than any comparable product in the nation.

The results are seen every day among the thousands of happy Montana owners who travel along the highways of North America. On behalf of everyone at Montana, I hope you will enjoy our product as much as we have enjoyed creating it for you.

Your Montana Mountaineer Dealer:

Sincerely,

R. F. Smith
General Manager

Montana • A Division of Keystone RV Company



**Keystone RV
Company**

17400 Hackberry Drive Goshen, IN 46526
(219) 642-4590 www.keystone-goshen.com

Product information and photography are as accurate as possible at the time of publication. Colors and finishes are photographic representations and may appear differently when viewing actual materials. Some features shown are optional. Features, prices and specifications are subject to change without notice. 09/01

