

2004 Jay Flight™ Travel Trailers and Fifth Wheels by Jayco®

Discover a favorite campsite where
the grass really is greener



28.5 RLS exterior

Silver moonlight and golden sunsets await ... without giving up a lot of green.

All your gear is ready to go: fishing poles and tackle box, inflatable raft and paddles, camping chairs, binoculars and enough food for a small army. You're equipped to see the sights you've imagined all these weeks leading up to vacation. When you journey in a Jay Flight™ travel trailer or fifth wheel, you'll see the most beautiful places nature created and still be able to afford the things you'll need to enjoy it.



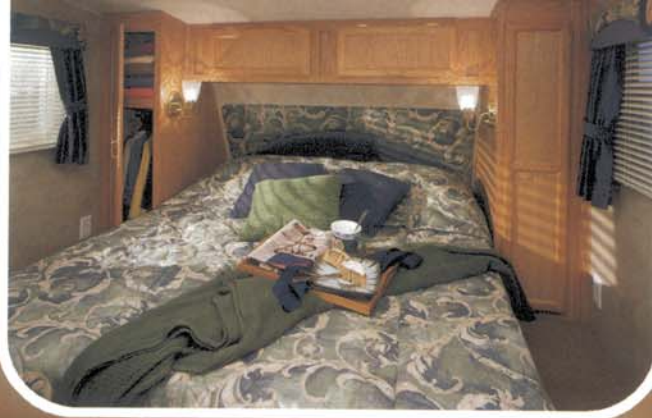
The beautiful Oak Value Package option, which includes raised-panel overhead kitchen cabinet doors and refrigerator front panels, creates a warm, inviting kitchen. Other features such as a built-in spice rack under the sink and standard oven make cooking more convenient.

Large, lockable, radius-cornered exterior storage compartment doors with grab handles give you pass-through access and room for longer items.

An extra-wide pantry* gives you room for a wide variety of food, expanding your menu options.

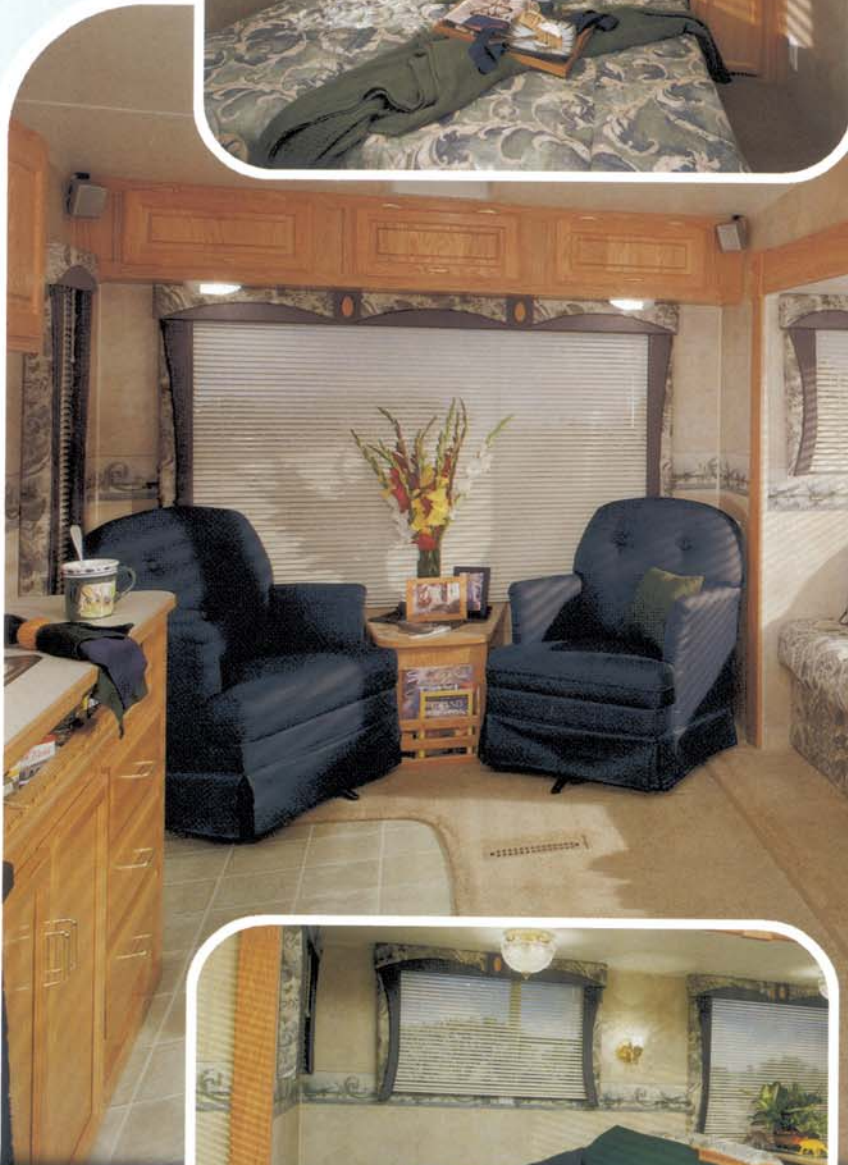
*Select models.





Get 13,500-BTU or 15,000-BTU central air conditioning in the Customer Value Package and stay comfortable no matter what the weather.

Operate the bathroom attic fan easily with the wall switch, part of the Customer Value Package.



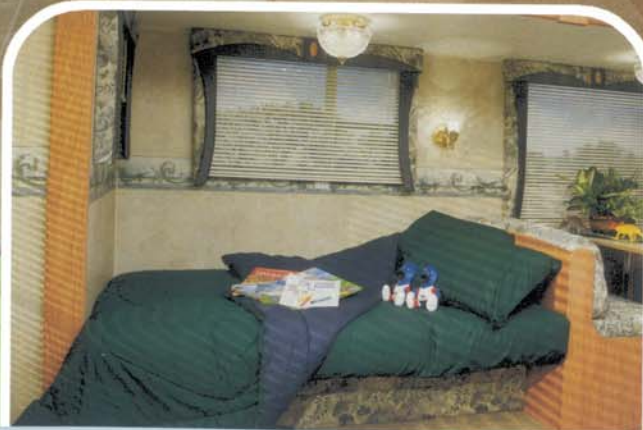
2004 JAY FLIGHT™ FIFTH WHEELS

Innerspring mattress and bedroom carpeting, both standard, give you reasonably priced comfort. The coordinated, quilted bedspread (included in the Customer Value Package) adds beauty.

28.5 RLS interior



Kick back after a day on your feet on the residential-style J-Steel™ convertible sofa, which easily folds down into a flat, comfy bed.



2004 JAY FLIGHT™ TRAVEL TRAILERS

Sometimes getting off
the beaten path can
put you back on track.



You get a real wood
silverware drawer.
No plastic tubs.

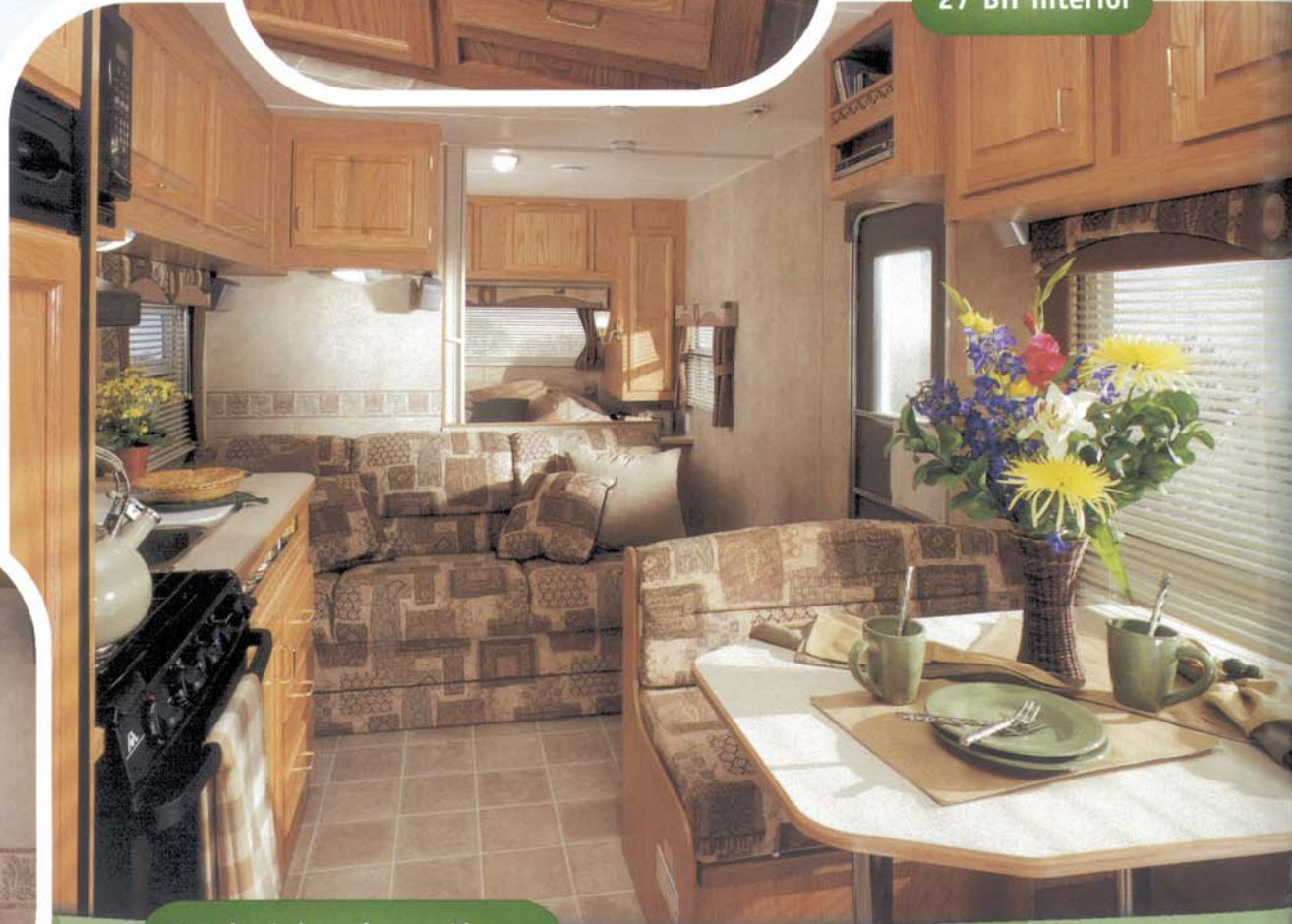
27 BH interior



A kitchen sink cover and range cover, part of the
Customer Value Package, give you more counter space.



Upscale window valances with
lambrequins and wood appliques add
elegance to Jay Flight™'s affordability.





Freshen up in the bathroom, featuring a large sink, medicine cabinet with mirror, skylight and tub surround (included in the Customer Value Package).



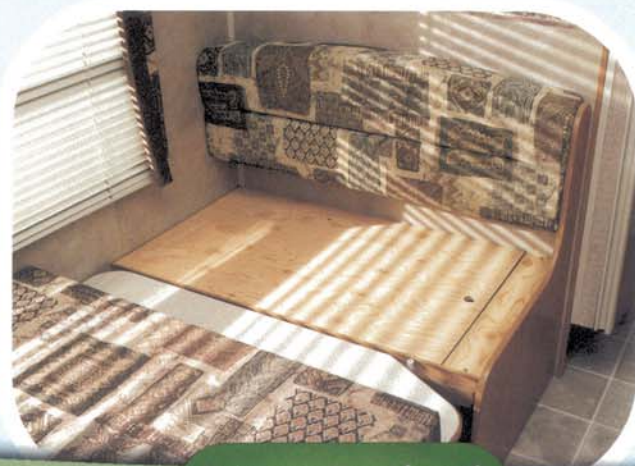
A flip-down TV shelf with cable hookup lets you enjoy your favorite shows while tucked comfortably in bed.



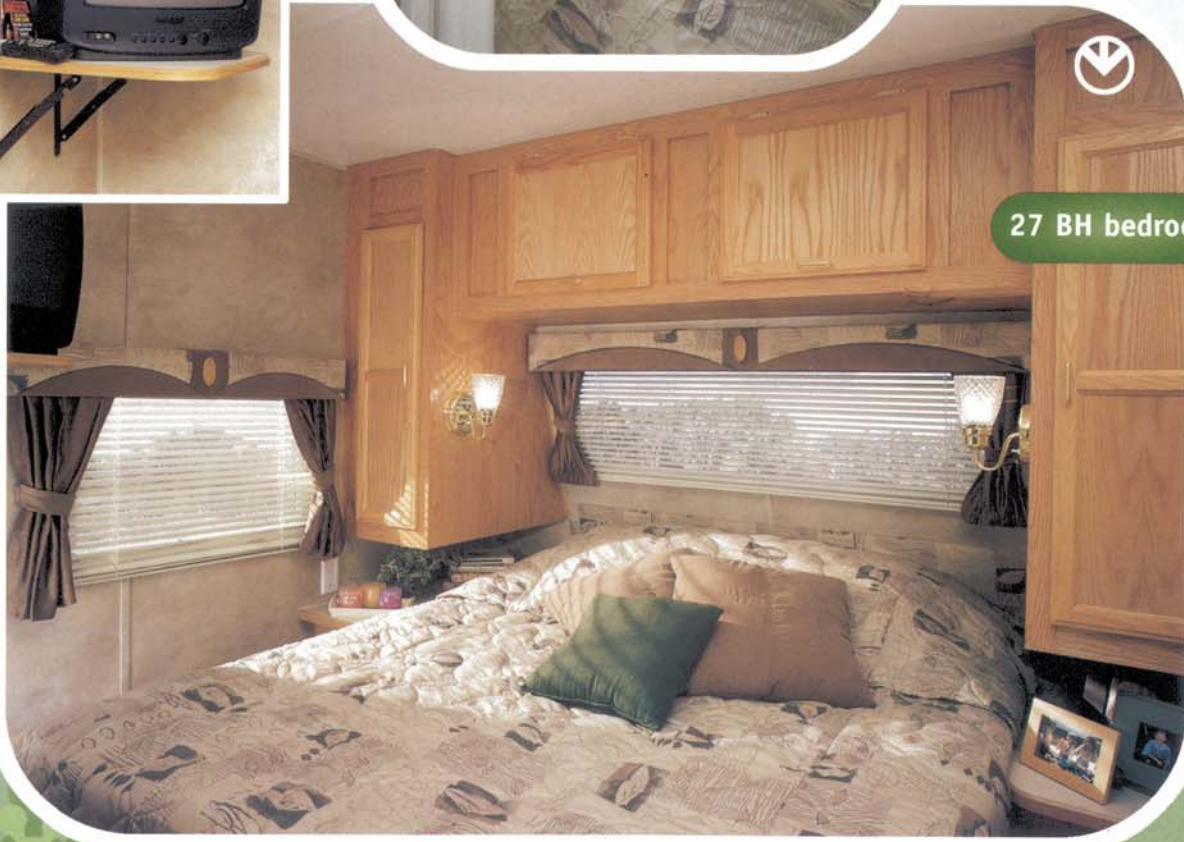
Give your kids their own space with double, triple or quad bunk beds (27 BH, 29 FBS, 29 BHS and 31 BHS; see floorplan for configuration).

In addition to beautiful oak cabinetry, you can store even more under the bed, which lifts easily on struts.

The bedroom gives you ample storage in the shirt wardrobes, part of the Customer Value Package.



Gain storage space beneath the strong 1/2" plywood dinette platforms.



27 BH bedroom

Hot dogs, lemonade and s'mores ... the perfect recipe for a night out.



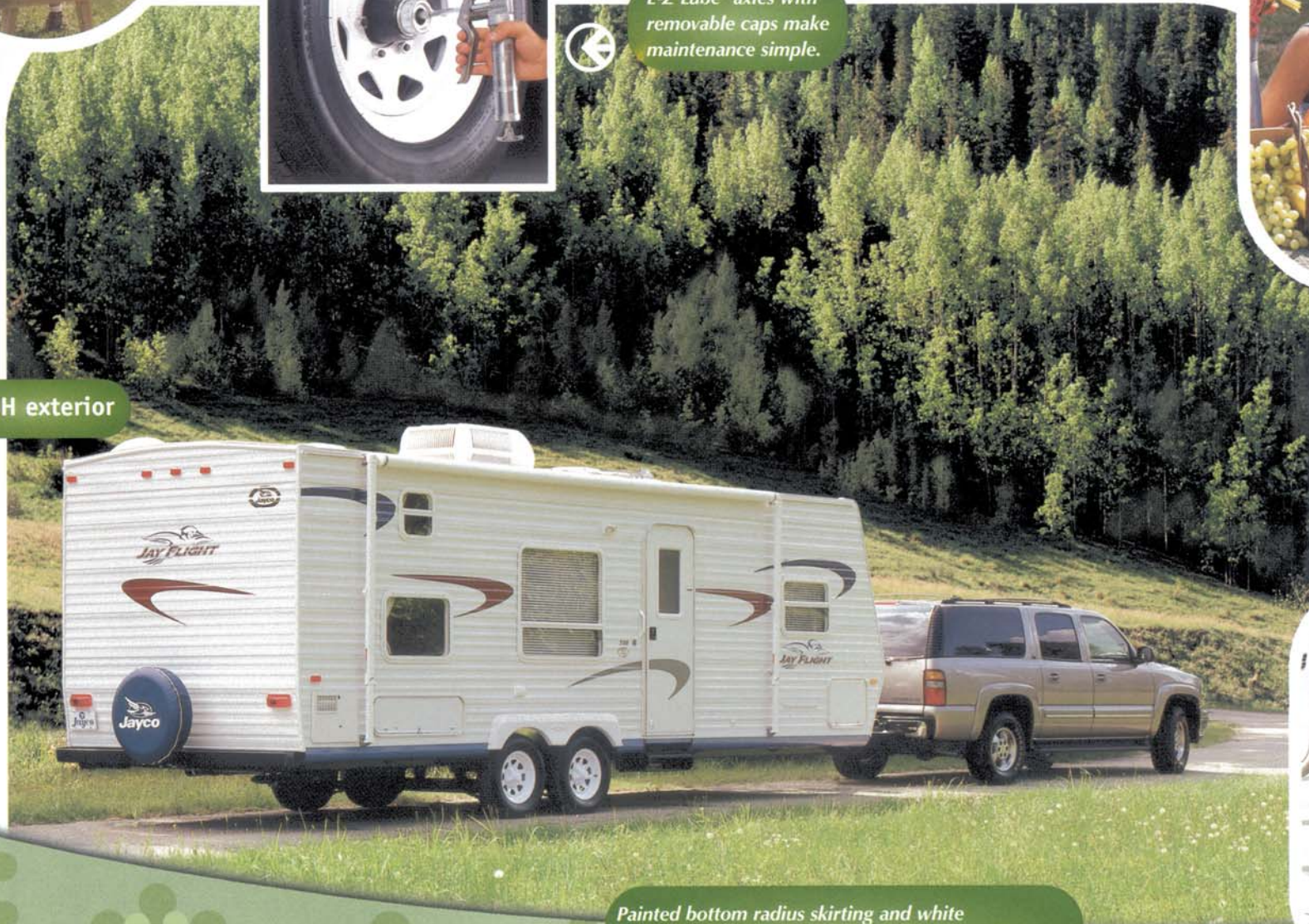
E-Z Lube® axles with
removable caps make
maintenance simple.



Get consistent-
tasting drinking
water with the optional
water purifier.

The optional outside
shower gives you a
convenient place
to clean off.

27 BH exterior



Painted bottom radius skirting and white
radius-cornered windows, entrance door and baggage
doors contribute to Jay Flight™'s good looks.

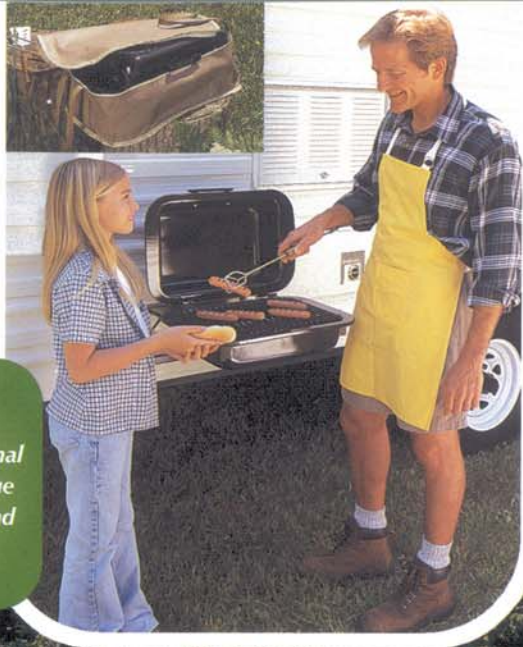


2004 JAY FLIGHT™ TRAVEL TRAILERS

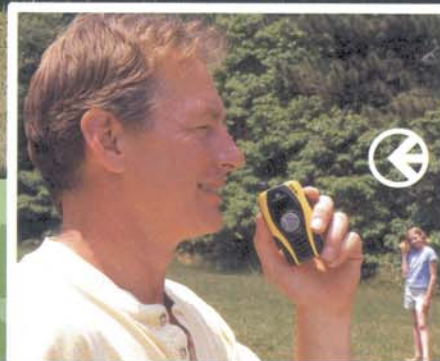
The front window flush-mounted stone guard keeps rocks from chipping or breaking the glass.



Nothing beats the taste of food grilled outdoors. Our optional portable gas barbecue grill makes it easy and comes with a handy carrying case.



Stay cool beneath the patio awning, part of the Customer Value Package.



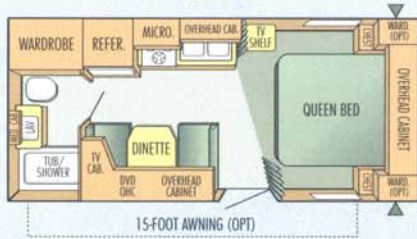
Call everyone in for dinner using the optional two-way family radio system equipped with four hand-held radios and holder/charger.

Travel Trailer Floorplans



2004 JAY FLIGHT™

21 FB



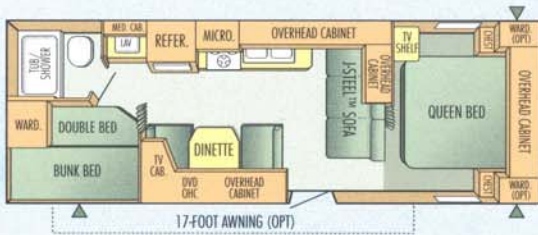
24 FB



25 RKS



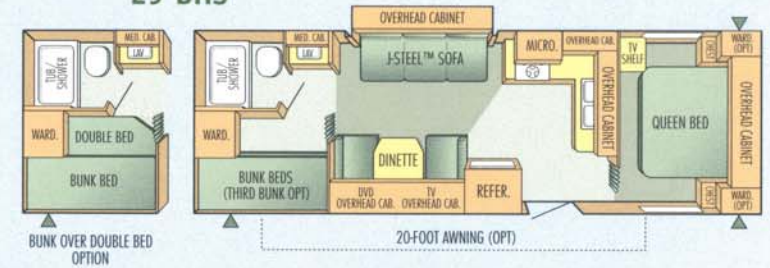
27 BH



28 FKS



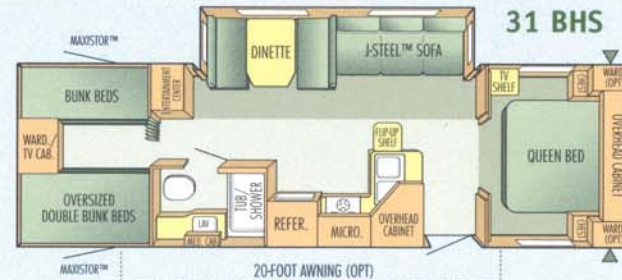
29 BHS



29 FBS



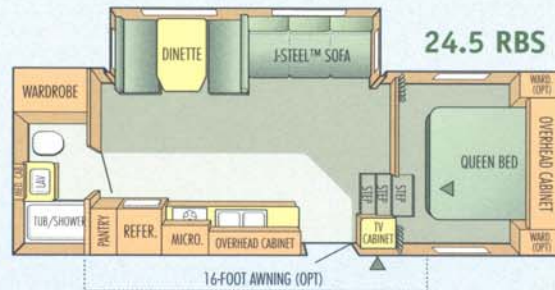
31 BHS



Fifth Wheel Floorplans



24.5 RBS



25.5 RKS



Fifth Wheel Floorplans - Continued

2004 JAY FLIGHT™



OUTSIDE STORAGE COMPARTMENT



2004 Jay Flight™ Travel Trailer and Fifth Wheel Specifications

Models	Exterior Length	Exterior Height	Bedroom Interior Height	Unloaded Vehicle Weight (lbs.)	Dry Hitch Weight (lbs.)	Gross Vehicle Weight Rating (lbs.)	Cargo Carrying Capacity (lbs.)	Fresh Water Capacity Includes Water Heater (gals.)	Gray Wastewater Capacity (gals.)	Toilet/Black Wastewater Capacity (gals.)
Travel Trailers										
21 FB	23'-3"	126"	81"	4060	530	5800	1740	37	44	44
24 FB	26'-10"	126"	81"	4615	520	7100	2485	37	28	28
25 RKS	28'-3"	126"	81"	5200	590	7500	2300	59	32	32
27 BH	29'-1"	126"	81"	4925	640	7500	2575	37	32	32
28 FKS	29'-8"	134"	81"	6695*	1100*	8500*	1805*	46*	65*	32*
29 BHS	30'-5"	126"	81"	5495	705	7500	2005	59	32	32
29 FBS	32'-6"	134"	81"	6820	765	8500	1680	46	65	32
31 BHS	32'-6"	134"	81"	7055	995	9500	2445	46	32	32
Fifth Wheels										
24.5 RBS	27'-1"	139"	59"	6290	1240	8500	2210	46	32	32
25.5 RKS	28'-5"	136"	59"	6035	1255	8500	2465	59	32	32
26.5 BHS	29'-2"	137"	59"	6205	1195	8500	2295	59	32	32
28.5 RLS	30'-3"	145"	76"	7400	1635	9400	2000	46	65	32
28.5 RKS	31'-4"	145"	76"	7380	1305	9400	2020	46	65	32
30.5 BHS	32'-7"	145"	76"	7645	1215	9700	2055	46	65	32

* Estimated

Unloaded Vehicle Weight (UVW): Sometimes referred to as "Dry Weight," UVW means the typical weight of this trailer as built at the factory. The UVW, as used in product literature and other promotional materials, does not include cargo, fresh water, LP gas, options or dealer-installed accessories.

Gross Vehicle Weight Rating (GVWR): GVWR means the maximum permissible weight of the trailer, including the UVW plus passengers, personal items, all cargo, fluids, options and dealer-installed accessories. The GVWR is equal to or greater than the sum of the UVW and the CCC.

Cargo Carrying Capacity (CCC): CCC means the maximum weight of all passengers, personal items, food, fresh water, LP gas, tools, other cargo and dealer-installed accessories* that can be carried by the trailer. CCC is equal to or less than GVWR minus UVW.

*The addition of options will decrease the CCC.

It is important for your safety and enjoyment that your tow vehicle be adequately sized and equipped to tow and handle the GVWR of the RV you select. Review weights and rating of your tow vehicle and consult a competent advisor for questions or advice. Whether you are new to RVing or a

veteran, get a feel for the performance of your tow vehicle and the RV together before heading out on the roadways. **When you tow an RV, you must drive differently than you do when driving a single vehicle.** Practice hooking up, driving, backing up and braking in a safe environment or seek out professional instruction.

See specification chart above. Jayco® affixes a weight label to each new RV which lists weight information for that vehicle.

Travel Trailer and Fifth Wheel Standards and Options

2004 JAY FLIGHT™

STANDARD EXTERIOR AND CONSTRUCTION FEATURES

- 15" radial tires
- E-Z Lube® axles
- Large lockable radius-cornered baggage doors with grab handle
- PolyFlex™ underfloor covering
- Retractable double entrance step (triple step on SuperSlide™ models)
- Entry assist handle
- Front window w/flush-mounted stone guard (travel trailers)
- Patio light with inside switch
- Radius-cornered entrance door w/dead bolt lock
- White radius-cornered windows
- Fiberglass entrance and baggage doors
- Hitch safety chains (travel trailers)
- Bumper with drain hose carrier
- Rain gutturing w/downspouts
- Rubber roof with 12-year warranty
- .024" aluminum exterior skin
- R-7 sidewall, roof and floor fiberglass insulation
- 5/8" tongue & groove plywood floor decking
- Painted bottom radius skirting
- * 3/8" walk-on roof decking (entire roof)
- Residential-style tapered 4-1/2" truss roof rafters
- * 1/2" plywood dinette, bed and bunk platforms
- Wall studs on 16" centers
- Galvanized steel wheel wells (insulated on non-slide models)
- 2" x 3" longitudinal floor joists on 16" centers
- Stabilizer jacks - rear (SuperSlide™ fifth wheels)

STANDARD HEAT, POWER AND WATER FEATURES

- City water hookup
- Systems monitor panel
- Demand water pump
- 12V electrical system
- Deluxe 45-amp. 110V power converter
- 6-gal. gas water heater
- 30-amp. power cord
- 110V exterior receptacle
- Auto-ignition furnace with thermostat
- In-floor ducted heating
- LP leak detector
- Fire extinguisher
- Smoke detector
- ABS holding tanks

STANDARD BATHROOM FEATURES

- ABS tub/shower
- Shower curtain
- Towel bar and towel ring
- Marine toilet
- Toilet paper holder
- Large bath sink
- Medicine cabinet with mirror
- Vinyl floor

STANDARD KITCHEN FEATURES

- Residential-style mixing faucet
- Residential-style acrylic sink
- Color-coordinated countertops
- Extra-deep kitchen drawers
- Large pedestal dinette table
- Flush-mounted double door refrigerator
- Deep, lipped overhead cabinets
- 3-burner range with 9,000-BTU SuperBurner™ and piezo igniter
- Range hood w/light and exhaust fan
- Extra large picture window at dinette
- Wallpaper border
- Built-in spice rack under kitchen sink
- Oven

STANDARD LIVING ROOM FEATURES

- Fairfield Oak flat-panel doors and drawers
- J-Steel™ convertible sofa (n/a 21 FB)
- Flush-floor electric slideout system (SuperSlide™ models)
- Manually-operated slideout system (sofa slide models)
- Color-coordinated decorator fabrics throughout
- Mini blinds
- Valances w/lambrequins
- High-quality furniture designed and manufactured by Jayco®
- TV antenna with signal booster
- Roof-mounted radio antenna
- Cable TV hookup
- Brass lighting in living area
- Carpet w/pad in living room
- Wallpaper border
- Accent wall mirror

STANDARD BEDROOM FEATURES

- Innerspring mattress
- Privacy curtain closure
- Bed support struts
- Carpet w/pad in bedroom
- TV shelf

OPTIONAL FEATURES

- * Swivel rocker (some models)
- Electric slideout system (sofa slide models)
- Bi-fold privacy door
- Oak value package
- Linoleum in living area
- * Front diamond plate (travel trailers)
- Tinted safety glass
- * Insulated, heated, enclosed underbelly
- Stabilizer jacks
- ABS gas bottle cover (travel trailers)
- Electric jacks (fifth wheels)
- Snap jacks (fifth wheels)
- 6-gal. gas/electric auto-ignition water heater
- Water purifier
- Outside portable gas barbeque grill w/carrying case
- Outside shower
- Family 2-way radio system
- Spare tire with carrier
- Vinyl tire cover
- Customer Value Package (includes: 13,500 BTU or 15,000 BTU central A/C, Attic fan in bath w/wall switch, Dolby® Digital 5.1 home theater system w/DVD, Bath skylight, Patio awning, Microwave w/carousel, Quilted bedspread, Dual 30-lb. LP-gas bottles w/regulator, Water heater bypass system, Bedroom shirt wardrobes, Kitchen sink cover, Range cover and Tub surround)

* New for 2004



For the ultimate movie and music experience, enjoy the Executive 9000 DVD Home Theater System, included in the Customer Value Package. The system comes complete with DVD/CD player, FL display, Dolby® digital decoder, Dolby Pro Logic® decoder, digital AM/FM tuner, full-function remote control and 100 watts total power output including five 15-watt satellite speakers and a 25-watt subwoofer.

Travel Trailer and Fifth Wheel Interior Color Selections



2004 JAY FLIGHT™



Clearwater



Rosewood



Spearmint

In the heart of the Midwest, old-world craftsmen have handed down tried-and-true construction methods from generation to generation. At our headquarters in Middlebury, Indiana, Jayco® continues this tradition when building all of our recreational vehicles. Our rugged designs, solid construction and commitment to quality add up to a well-built vehicle you can depend on for years.





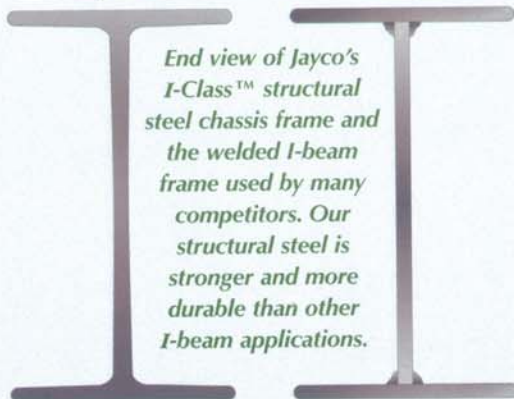
2004 Jay Flight™ Travel Trailers and Fifth Wheels

Jay Flight™ offers both optional electric and snap jacks (fifth wheels).

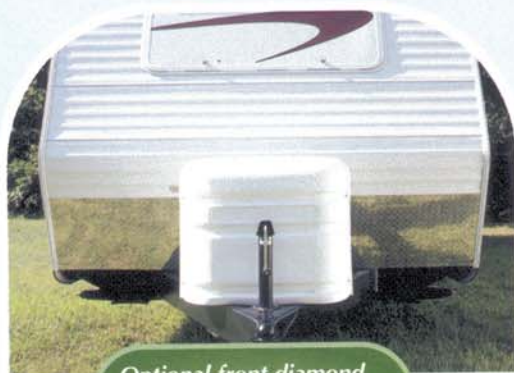


Jayco®

Competition



End view of Jayco's I-Class™ structural steel chassis frame and the welded I-beam frame used by many competitors. Our structural steel is stronger and more durable than other I-beam applications.



Optional front diamond plate protects against road debris (travel trailers).



Get convenient dual 30-lb. LP-gas bottles with regulator, included in the Customer Value Package.

WE BACK WHAT WE BUILD

**2+3
Warranty**

The Jayco **2+3 Warranty** is a manufacturer's warranty. It doesn't come from your dealer, and it's not an extended

warranty! It comes from the people who build Jayco recreational vehicles to the people who buy them. Each Jayco is warranted to the original purchaser for twenty-four (24) months from the date of purchase against defects in materials and workmanship. This is full hitch-to-bumper coverage on towables and bumper-to-bumper on motorized RVs. The Jayco warranty includes a three-year (3) structural guarantee. In addition, our warranty is transferable within the first two (2) years for a \$100 processing fee. Go ahead and compare the Jayco warranty with other manufacturers' warranties. You'll find it's the best in the business! For a copy of the warranty with full terms and conditions, ask your local Jayco dealer or visit our Web site.

See dealer for further information and prices.



FAMILY OWNED. FAMILY FOCUSED.

Jayco, Inc. P.O. Box 460 Middlebury, IN 46540
www.jayco.com



As a Jayco owner, you can be part of the Jayco Jafari International Travel Club. Ask your dealer about the Jafari "flight" in your area, write Jayco direct or visit our Web site.

Please Note: All information in this brochure is the latest available at the time of publication approval. Jayco reserves the right to make changes and to discontinue models without notice or obligation.

Brass light fixtures shown in certain bedroom photos N/A in 2004 Jay Flight models.

Pictures in this brochure may show optional equipment. RVs built for sale in Canada may differ to conform to Canadian codes.

Printed on recycled paper.



©2003 Jayco, Inc. 1103-100M Litho in U.S.A.