

# Wildcat

BY FOREST RIVER

THE DIFFERENCE IS IN THE DETAILS.



ENGINEERING



TECHNOLOGY



STORAGE



RESIDENTIAL

AERODYNAMICALLY DESIGNED TO BE PULLED BY TODAY'S HALF TON VEHICLES.







**28RK** EARTH TAN INTERIOR

## **WILDCAT. | BEAUTIFUL. OPEN.**

Stay connected to the conversation. The Wildcat 28RK floorplan allows you to fix your meals in the rear kitchen and carry on the conversation with your guests in the living area. The residential upgraded cabinetry and stainless steel refrigerator insert adds a touch of home and class on the road. Look closely. You won't find particle board but quality glued and screwed lumber-core cabinetry.

(Right) You will feel right at home in the Wildcat's spacious master bedroom. Amenities include a queen-sized bed, many built-in cabinets and storage drawers, a panoramic bay window, mirrored closet doors, and a conveniently mounted overhead TV cabinet.

(Below) The Wildcat 29BHBP supplies bunk beds for the kids in the rear along with an entertainment center. The rear storage garage is perfect for packing along bikes, toys, and anything else your kids would want to bring without sacrificing storage space within the coach. The optional refrigerator front and free standing table and chairs, as shown below, add flexible seating and upscale presentation.



**29RLBS**



**29RLBS**



**29BHBP COASTAL GREEN**





**30LSWB****30LSWB**

(Left) Get ready for the day in a comfortable bathroom. The neo-angle glass shower and three-bulb vanity make this bathroom very bright and cheery. The residential style cabinetry and porcelain toilet are details that matter to our customers.

(Bottom) If storage is important, welcome to the 30 LSWB. You won't find more storage space in any other floorplan of its kind. The living area displays the rich sectional sofa (standard with a hide-a-bed), residential computer desk, swivel T.V. stand for the outdoor entertainment center and the enormous horse shoe overhead cabinets. The skylight is the icing on the cake.

(Top) Wildcat is dedicated to bringing high-end interior packages to enrich their coaches. The 30LSWB bedroom is no exception. In this bedroom, you will find generous storage space in the overhead cabinets and side wardrobes on either side of the bed. Bed spread drapes and valances come designed to integrate with the complete interior package.

**30LSWB**



**30LSWB** MERLOT INTERIOR

## LUXURIOUS LIVING. | UNIQUE HIGH END INTERIORS

Wildcat pulled out the stops when we created the 30LSWB. Classy. Elegant. Graceful. From the stainless steel refer insert, to the floor track lighting, each detail is reviewed and enriched to bring you a coach like no other. Merlot has never looked so good.





PACIFIC BLUE

## WILDCAT. | COMFORT, LUXURY, AND CONVENIENCE.

Go anywhere and you're sure to have what you need at your fingertips. The 29RLS kitchen is designed to conveniently place the appliances, cabinets and pantry close by so you can prepare food without hurrying through the coach. Take time to notice the solid wood cabinetry and generous storage space not mention the little details like the floor track lighting for nighttime trips to the kitchen.

The bedroom of the 29RLS comes with bedside wardrobe storage and overhangs as well as night stands and foot locker drawers. Place your favorite book down for the night and pull out your slippers from the foot locker drawers. With so much storage space, you can keep just about anything you need within your grasp.

It's the details that really go a long way. The 29RLS kitchen comes standard with the countertop extension. The 16" x 32" counter top extension provides additional room to prepare your meals or acts as a bar table for a dinner for two. A very handy feature when you need more counterspace.

## AL-KO® AXLES

AL-KO AXLES OFFER MANY ADVANTAGES OVER CONVENTIONAL AXLES



- Fully independent wheel suspension.
- No metal to metal contact and no springs, shackles, hangers, or U-bolts to break or wear out.
- Lower trailer center of gravity for improved stability.



**EXCLUSIVELY ON TRAVEL TRAILERS**



*The Wildcat model 26FBS features a 2" laminated vacuum-bonded aluminum constructed slide room and custom upgraded exterior graphics.*





## WILDCAT. | FIFTH WHEEL AND TRAVEL TRAILER STANDARDS.

Wildcat continues to improve standard features to accommodate your needs. With careful detail, travel trailers and fifth wheels are constructed with your comfort and convenience in mind. Upgraded cabinetry, residential furnishings, and loads of storage space make Wildcat the perfect choice.

### Kitchen

- NEW C.T.S. ( Central Trash System ) Flush Mounted Counter Top Lid That Leads to Your Trash Can Accessed by an Outside Baggage Door.
- NEW Nickel Finish Door Handles and Hinges
- NEW Residential Style Armstrong "Toughguard Linoleum" ( 5 year Warranty)
- NEW Radius Edged Raised Panel Upper Cabinets
- NEW Radius Edged Drawer Fronts
- Paper Towel Holder in Kitchen
- NEW Stainless Steel Refrigerator Insert
- NEW Upgraded Stainless Steel Magic Chef Microwave
- NEW Nickel Finish Residential Style Metal Faucet
- Kitchen With (2) Over Head Cabinets above Sink
- Extra Large Pot and Pan Drawer Under the Oven ( N/A 28RK)
- NEW Nickel Finish Residential Style Range Vent
- 10,000 Gal. Complete Water Filter System
- Protective Residential Brushed Nickel Finish Carpet Bars
- Solid Wood Edge Counter Tops
- Extra Large Residential Brushed Nickel Acrylic Kitchen Sink
- Extra Large Residential Pantry
- Storage Above Refrigerator
- Spice Rack and Knife Holder
- Toe Kicks in the Base Kitchen Cabinet with Twinkle Light Runner
- Fluorescent Lighting in the Kitchen
- Residential Style Drawer Guides
- 6 Gallon Gas / Electric DSI Water Heater
- Trash Can For the Kitchen Supplied
- ( 2 ) 110 V Outlets in the Kitchen
- 16" X 30" Counter Top Extension / Bar Table
- Large Galley Holding Tanks
- NEW Black Range Cover
- NEW Upgraded Wood Grain
- NEW 22" Magic Chef Black Oven and 3 Burner Range

### Living Room

- NEW Slider Windows at Both Ends of the Slide Out
- NEW Upgraded Wood Grain
- 6 - NEW Residential Décor Fabrics
- NEW Brushed Nickel Wall Clock
- NEW Brushed Nickel Residential Carpet Bar
- NEW Upgraded Residential Trackless Carpet and Pad
- Décor Mirror ( Where applicable )
- 44" Dinette Pedestal Table with Oak Edge Table top
- ( 8 ) 13" X 13" Cabinet Doors with 12" Deep Over Head
- Cabinets In the Slide Out ( Dinner Plate Depth )
- Flush Floor LCI Hydraulic Slide Out System With Manual Override Std

- Forest River's Exclusive 150 Watt 5.1 Dolby CD / DVD 12 + 2 AM/FM with Upgraded Remote THIS IS A 12V SYSTEM GREAT FOR DRY CAMPING
- Extra Large Entertainment Center
- Fully Laminated Slide out WALLS CEILING AND END WALLS. MOST OTHER PRODUCTS DON'T DO THIS
- 6' Interior Slide Out Head Heights (5th Wheels only)
- Satellite Hook Ups
- Cable Hook Ups
- Magazine rack
- Custom Made Grab Handle at the Entry Door
- NEW Radius Edged Raised Panel Cabinets
- 12 V Lighting in Slide Out So you can see when you dry camp. Most other products don't do this
- NEW Upgraded Window Treatment Valance with Hard Lambrequins on the sides
- Plywood Seat Bases in Booth Dinette not Chip Board
- Storage Under The Step to the Bathroom and Bedroom

### Bathroom

- NEW Residential Porcelain Foot Flush Toilet
- NEW Extra Large Bath Room Window ( n/a 24RL, 27BHWB, 29BHB, 31QBH, 29BHS, 29RLS )"
- Laundry Hamper Chute and Basket ( 5th Wheels)
- Extra Large Lavatory Sink
- 12" Fantastic 3 Speed Fan
- Fully Built-in Wood Medicine Cabinet
- Fully Fiberglassed Reinforced ABS Showers and Tub Base
- Glass Shower Door on Neo Angled Showers
- Extra Large Linen Closet
- GFI Receptes in Bathroom
- 3-Bulb Brushed Nickel Residential Make Up Light at the Medicine Cabinet
- Extra Large Garden Neo-Angled Shower ( TTS 26FBS, 29RLS, 5TH 24RL, 27RLWB, 27BHWB, 28RK, 29RLBS, 30LSWB)
- Larger Galley Tanks
- Residential Metal Shower Drains in Tubs and Showers. Most other products are plastic

### Bedroom

- Bedroom Over head Doors above Bed are Solid Raised Panel Doors. Not see through Glass
- Color Matched Upgraded Bedspread
- Drawers in the Nightstands and Wardrobes
- Drop Deck for 6' 4" of Standing Room in front of the bed. ( Industry 1st in Mid-Profile )"

- Twice the Storage Under the Bed Vs. Competitors
- Hydraulic Struts To Lift the Bed Up for Storage
- Foot Locker Drawers Under the Queen Bed in Travel Trailers
- Fully Finished Off Bed Bases
- 4 - 8 Drawers in the hallway ( 5th Wheels)
- Safety Deposit Security Box Located under the Bed ( a First at this price point )
- Extra Lights in the Bedroom
- 60" X 80" Queen Beds ( 5th Wheels)
- Additional Shirt Closet / Wardrobe next the Bed with Drawer
- Bi-Fold Partition Separating the Bedroom and Bathroom.
- NEW Upgraded Wood Grain

### Exterior

- NEW Door Side Cable Output For an Outside TV Entertainment Center
- NEW Outside Entertainment Center (2) Stereo Speakers
- NEW Extra Large Door Side Baggage Door on 5th Wheels
- NEW C.T.S. Central Trash System
- NEW Spring Loaded Quick Release Pins on Fifth Wheel Legs
- Fully Heated and Enclosed Holding Tanks
- 110V Outlet - Door Side Patio Plug
- Second 110V Outlet - Door Side For Awning Party Lights located by the Awning Leg
- White Window Frame
- Molded Fender Skirts
- Water Heater By-Pass
- One Piece Rubber Roof with 12 year Warranty
- 2" Laminated Vacuum Bonded Aluminum Welded Sidewalls & Slide Out Rooms
- 30# LP Tanks Mounted on Each Side of the Frame for Weight Distribution ( 5th Wheels)
- Heated Fresh Water Tanks
- 10,000 Gallon Water Filtration System
- Patio Light
- Hitch Light
- Step Light at Main Entry Door
- Laminated and Insulated Bunk Room Floors
- Extra Large Rolled Side Metal
- 3/8" Decked Front to Back Full Walk On Roof
- Custom Mural Upgraded Graphics
- 225 / 75 / R 15 "D" Rated Tires ( 5th Wheels )
- Independent Rubber Ride Suspension ( Travel Trailers )
- R-10 side Walls Insulation
- R-14 Roof Insulation ( Formaldehyde Free )
- R-14 Floor Insulation ( Formaldehyde Free )
- Upgraded Automotive Designed Gel Coat Fiberglass Front Cap
- NEW Chrome Bumper Cover



## WILDCAT FIFTH WHEEL OPTIONS

- Colors: Pacific Blue, Coastal Green, Earth Tan, Designer Sage, Designer Mauve, Merlot
- Hide-a-bed/IPO Sofa (N/A 24RL)
- Swivel Rocker (All chairs optional)
- 2nd Swivel Rocker (All chairs optional)
- Free Standing Table w/4 Chairs
- Day/Night shades optional (1 COLOR)
- 15.0K BTU Ducted Roof Air
- Outside Shower (N/A ON 30LSWB)
- Black Frame Dark Tinted Safety Glass (NC,OH,DE,CA,CT,NJ,VA,WI)
- Ceiling Fan in Living Room
- Bi-Fold Shower Door (Only on 29BHBP, 31QBH)
- 2nd Drawer under Dinette (N/A 28RK)
- Hydraulic Landing Gear
- State Seal
- Engineering Charge (Any Deviations: i.e. Twin Beds)
- CSA
- Black Tank Flush
- Raised 6 Panel Refer Insert
- Upgraded Décor Wood Fascia on Main Slide Out

### WILDCAT EXTERIOR VALUE PACKAGE #1

(Mandatory Option Package)

13.5 BTU Ducted roof air, Awning, Spare tire carrier and cover, Skylight, Cable T.V. and Satellite hook-up, rear stab jacks, (2) Scare lights, TV Antenna, Power front jacks, Rear ladder, Folding assistant handle, 5200# axles, 6 lug 225 rims and tires, Rubber roof, Upgraded screwless baggage doors, Chrome center caps on rims, Extended pin box, Enclosed pin box, Fiber glass front cap, Triple entry step, Laminated sidewalls, Chrome bumper cover, Plywood floors, Upgraded exterior graphics, Drip rail with down spouts, Fully laminated slide-out.

### WILDCAT INTERIOR VALUE PACKAGE #2

(Mandatory Option Package)

Microwave oven, Stainless Steel Refer insert, LP leak detector, Range cover, Drawer under dinette, Solid wood cathedral raised panel and wood framed doors, Paper towel holder, Magazine rack, Clock, Exit handle, Armstrong lino, Upgraded textured carpet, Carpet bar, Lazy susan, Pantry, Wood edge counter tops, Single levered kitchen faucet, Slide-out upgraded dinette light, Slide-out wall sconce light, Linen closet, Laundry hamper chute, Wardrobe closet in bedroom

### FOREST RIVER CAMPING UPGRADE

(Mandatory Option Package)

150 watt 5.1 Dolby CD, AM/FM/DVD/TV Tuner and remote, 100% water filtration system, 3-speed fantastic fan in bathroom, RV expansion program

## WILDCAT TRAVEL TRAILER OPTIONS

- Hide-a-bed/IPO Sofa (N/A 24RL)
- Colors: Pacific Blue, Coastal Green, Earth Tan, Designer Sage, Designer Mauve, Merlot
- Swivel rocker (All chairs optional)
- Second swivel rocker (All chairs optional)
- Free standing table with chairs
- Day/Night shades (1 color)
- 15.0K BTU Ducted roof air
- Outside shower
- Black Frame Dark Tinted Safety Glass (NC,OH,DE,CA,CT,NJ,VA,WI)
- Bi-fold shower door (29BHS only)
- Second drawer under dinette
- State seal
- Engineering charge (Any deviation I.E. Twin beds)
- CSA
- Black Tank Flush
- Raised 6 Panel Refer Insert
- Upgraded Décor Wood Fascia on Main Slide Out

### WILDCAT EXTERIOR VALUE PACKAGE #1

(Mandatory Option Package)

13.5 BTU Ducted roof air, Awning, Spare tire carrier and cover, Skylight, Cable T.V. and Satellite hook-up, (4) stab jacks, Scare lights (2), TV Antenna, Front fiberglass cap, Rear ladder, Folding assistant handle, 5200# axles, 6 lug 225 rims and tires, Rubber roof, Upgraded screwless luggage drawers, Chrome center caps on rims, Triple entry step, Laminated sidewalls, Chrome bumper cover, Plywood floors, Upgraded exterior graphics, Drip rail with down spouts, Fully laminated slide-out.

### WILDCAT INTERIOR VALUE PACKAGE #2

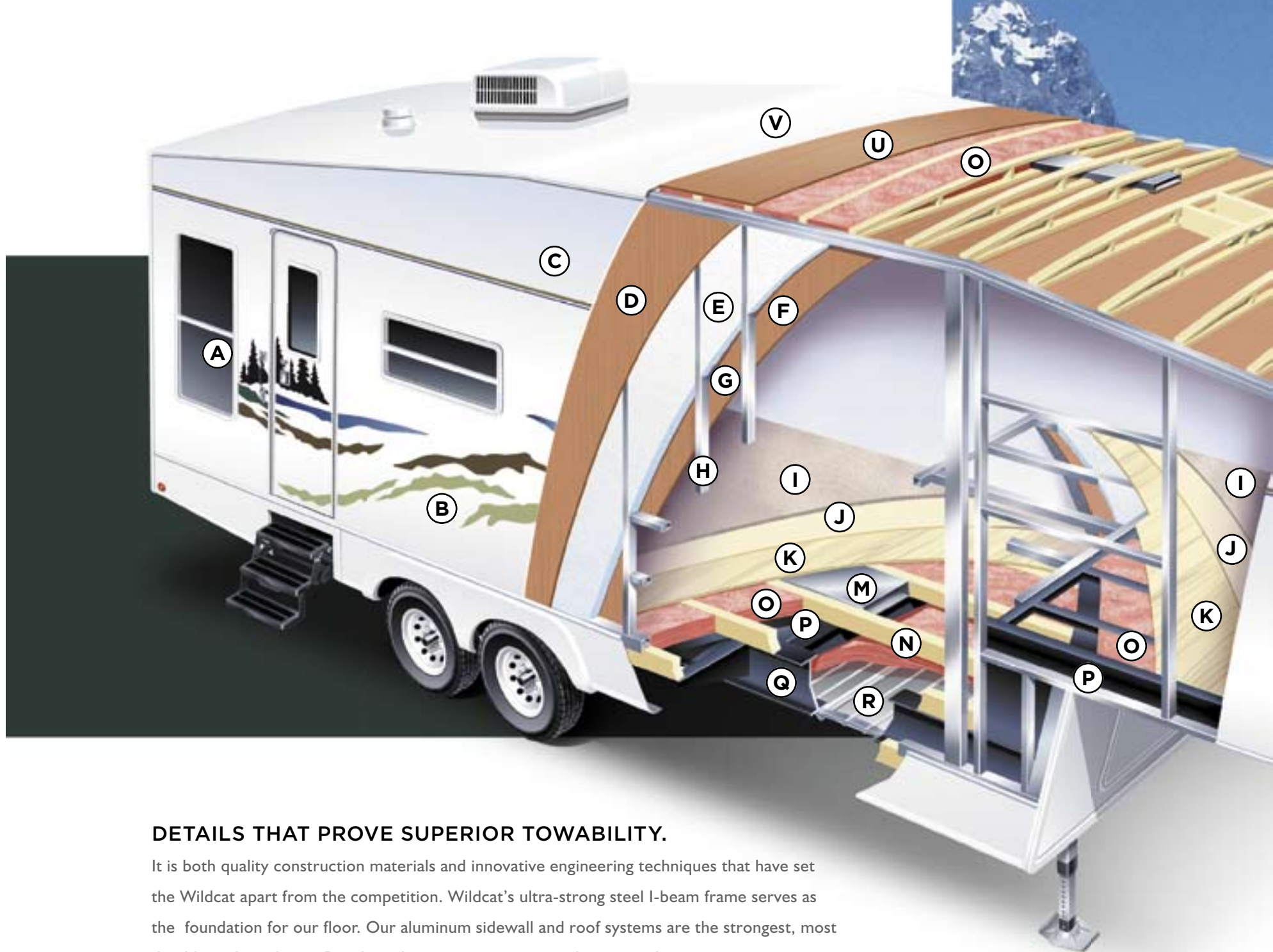
(Mandatory Option Package)

Microwave oven, Stainless Steel Refer insert, LP leak detector, Range cover, Drawer under dinette, Solid wood cathedral raised panel and wood framed doors, Paper towel holder, Magazine rack, Clock, Exit handle, Armstrong lino, Upgraded textured carpet, Carpet bar, Lazy susan, Pantry, Wood edge counter tops, Single levered kitchen faucet, Slide-out upgraded dinette light, Slide-out wall sconce light, Linen closet, Laundry hamper chute, Wardrobe closet in bedroom

### FOREST RIVER CAMPING UPGRADE

(Mandatory Option Package)

150 watt 5.1 Dolby CD, AM/FM/DVD/TV Tuner and remote, 100% water filtration system, 3-speed fantastic fan in bathroom, RV expansion program



## DETAILS THAT PROVE SUPERIOR TOWABILITY.

It is both quality construction materials and innovative engineering techniques that have set the Wildcat apart from the competition. Wildcat's ultra-strong steel I-beam frame serves as the foundation for our floor. Our aluminum sidewall and roof systems are the strongest, most durable in the industry. By taking the time to integrate each structural component, we are



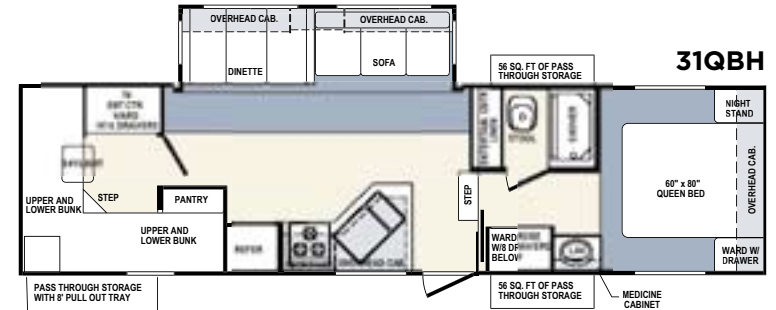
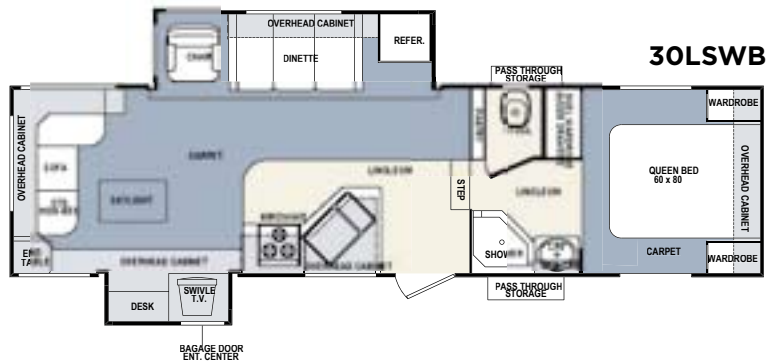
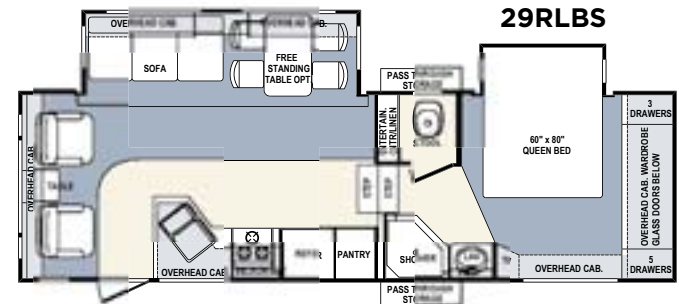
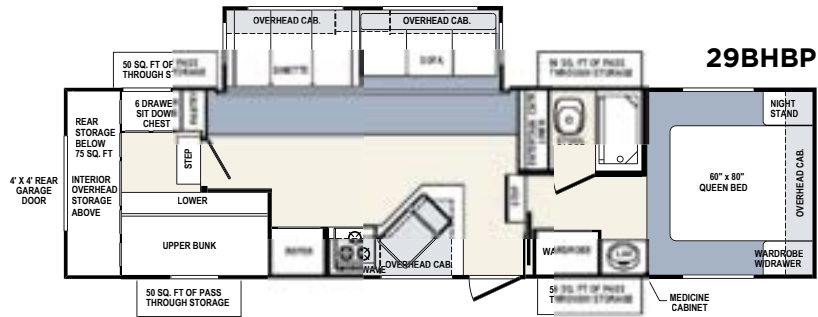
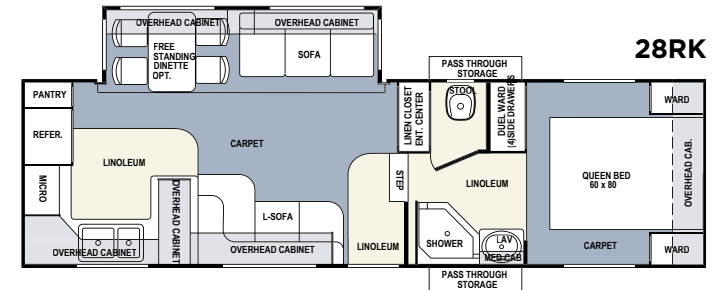
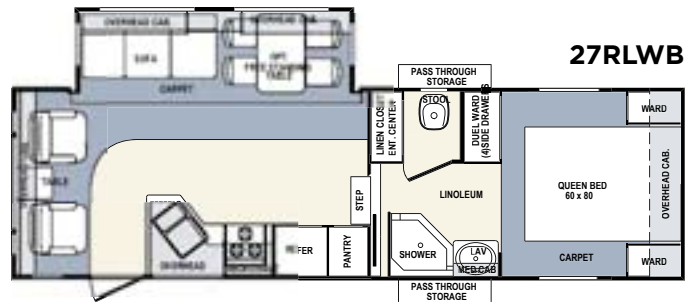
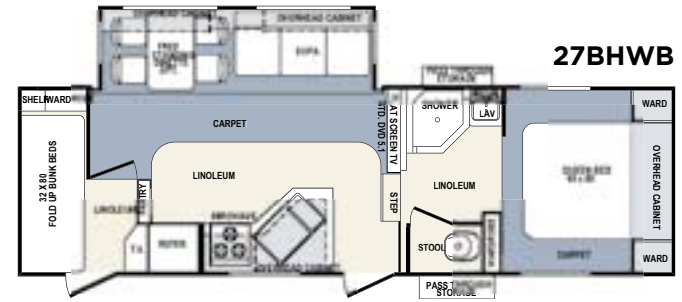
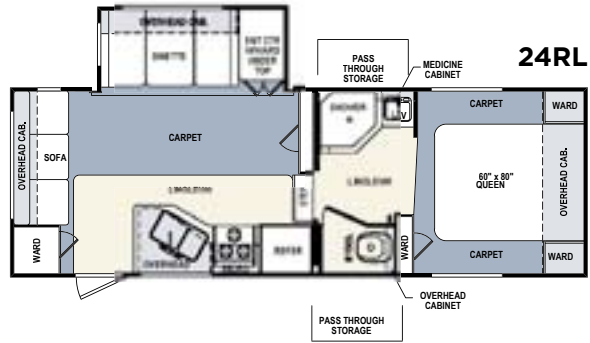
# WILDCAT CONSTRUCTION



drastically improving the Wildcat's ability to take the wear and tear of road travel. This means that every Wildcat is built to stand the test of time – from the inside out!

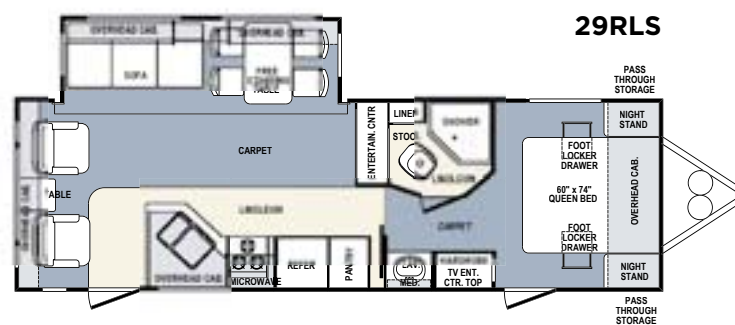
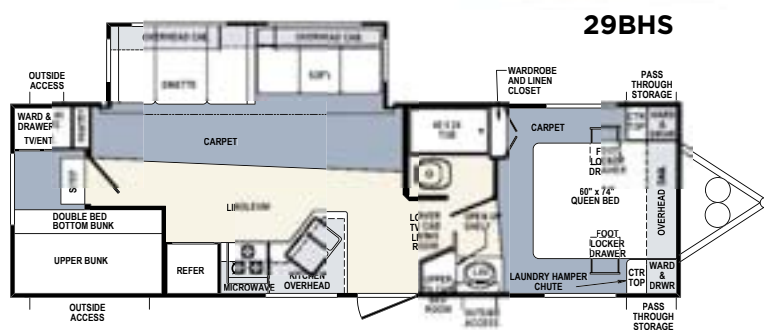
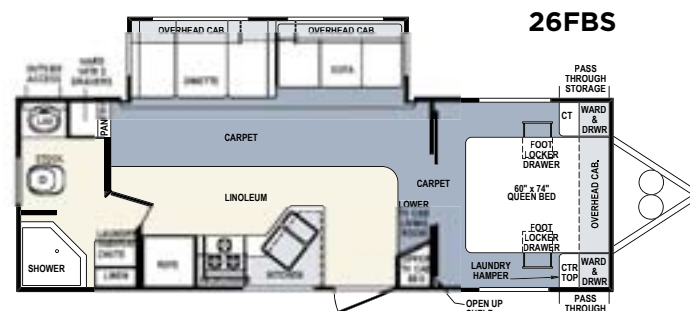
- A. White radius windows (Optional dark-tinted windows)
- B. Deluxe mural graphics package
- C. Smooth fiberglass exterior
- D. Luan
- E. Block foam insulation
- F. Decorative wall board
- G. Electro-galvanized sheet (EGS) metal backing strip
- H. Welded tubular aluminum studs (2" wall)
- I. Residential Plush carpet
- J. Residential Soft foam padding
- K. 5/8 Tongue and groove plywood floor decking
- M. Large capacity heat duct
- N. 2" x 3" Wood trusses, 12" on center
- O. Fiberglass insulation (R-14)
- P. Black polymax moisture barrier
- Q. 8 – 10" Steel I-Beam Chasis (Depends on model)
- R. 1-Piece lami-plast underbelly
- S. Extended hitchpin
- T. Wood roof trusses, 16" on center
- U. 3/8" decking (Full walk-on roof)
- V. One-piece EPDM rubber roof (12 yr. warranty)

## WILDCAT FIFTH WHEEL FLOORPLANS





## WILDCAT TRAVEL TRAILER FLOORPLANS



### FIFTH WHEELS

### TRAVEL TRAILERS

MODELS	24RL	27BHWB	27RLWB	28RK	29BHBP	29RLBS	30LSWB	31QBH	26FBS	29BHS	29RLS
Dry Weight	6730	7160	6950	7520	8130	7760	8610	8250	6630	7280	7260
GVWR	11090	11240	11070	11420	11500	11490	11620	11670	10820	10980	10920
Cargo Capacity	3781	3541	3371	3121	2711	3351	3010	2670	3811	3221	3081
Hitch Weight	930	1080	950	1100	1340	1330	1460	1400	660	820	760
Exterior Length	25'9"	29'1"	29'8"	30'0"	32'8"	29'8"	32'8"	32'8"	28'5"	31'4"	31'8"
Exterior Width	8"	8'	8'	8'	8'	8'	8'	8'	8'	8'	8'
Exterior Height with A/C	11'10"	11'10"	11'10"	11'10"	12'	12'4"	12'	12'	10'10"	10'10"	10'10"
Upper bedroom height	6'4"	6'4"	6'4"	6'4"	6'4"	6'4"	6'4"	6'4"	6'4"	6'4"	6'4"
Fresh Water Capacity	43 gal.	43 gal.	43 gal.	43 gal.	43 gal.	43 gal.	43 gal.	43 gal.	43 gal.	43 gal.	43 gal.
Black Water Capacity	37 gal.	37 gal.	37 gal.	37 gal.	37 gal.	37 gal.	37 gal.	37 gal.	37 gal.	37 gal.	37 gal.
Gray Water Capacity	37 gal.	74 gal.	74 gal.	74 gal.	74 gal.	74 gal.	74 gal.	74 gal.	37 gal.	74 gal.	74 gal.
Master Bed Dimensions	60" x 80"	60' x 80"	60" x 80"	60" x 80"	60" x 80"	60" x 80"	60" x 80"	60" x 80"	60" x 74"	60" x 74"	60" x 74"
Booth Dinette Dimensions	44"	44"	44"	44"	44"	44"	44"	44"	44"	44"	44"

## WILDCAT SPECIAL FEATURES: INTERIOR



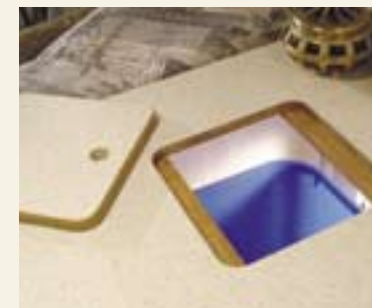
*Extra large 2-tier Lazy Susan in overhead cabinet above the galley sink.*



*The 3-bulb make-up vanity lighting is standard in Wildcat bathrooms.*



*New multi-profiled raised panel doors with radius edges. This residential door and drawer front is normally reserved for high end products. It's standard on your Wildcat!*



*C.T.S. (Central Trash System) This is new and special to Wildcat. You're able to throw your trash away and remove it by opening an outside baggage door. Brand X makes you walk down four steps.*



*Floor track lighting is standard in all Wildcats letting you see where you walk at night. Great for the kids.*



*Safety deposit security box located under the main bed. A first at this price point.*



*The 27BHWB comes standard with a 12-volt LCD Flat Screen T.V.*

*(Right) Forest River's Exclusive 150 Watt 5.1 Dolby CD / DVD 10 + 2 AM/FM with Upgraded Remote. This is a 12V system great for dry camping.*



*Fifth Wheels feature extra large overhead cabinets standard in the slide out. At 12" deep, it will hold all your dinner plates.*



*Counter extension gives the Wildcat 75% more countertop work space. A first at this price point.*



*Wildcat bathrooms come standard with residential-style porcelain foot flush toilets.*





## WILDCAT SPECIAL FEATURES: EXTERIOR



*Wildcat offers standard extra large baggage doors on the front and door side pass through storage compartment*



*Pack away all you want to bring into the rear garage. No need to leave anything behind.*



*The 30LSWB features an outside entertainment center with a swivel T.V. pedestal to watch the game outdoors. A clear safety glass front ensures no bugs get in and no air conditioning gets out.*



*The standard outside entertainment center includes (2) stereo RV marine speakers and cable jacks to plug your T.V. into.*



*The hand-held, outside shower option provides quick clean-ups.*



*The water filtration system provides safe clean drinking water through all the water lines and water heater.*



*C.T.S. trash can is accessible from the outside baggage door as shown above.*



*Hydraulic landing gear on Fifth Wheels (Optional) 10 times faster than conventional electric jacks. Quick release pins on Fifth Wheel feet. (Standard)*



*The rear bunk beds provide additional sleeping space. An industry first 80" fold away bunk beds. (27BHWB only)*



*Fold away the rear bunnk beds to access your huge walk-in roll-in storage space. (27BHWB only)*

## WILDCAT DESIGNER INTERIOR FABRICS

Comfortable, durable and stylish. Wildcat offers the finest in designer fabrics bringing elegance to your RV-ing experience.

Choose from any of the interiors below.

**DESIGNER MAUVE INTERIOR**



**PACIFIC BLUE INTERIOR**



**MERLOT INTERIOR**



**COASTAL GREEN INTERIOR**



**EARTH TAN INTERIOR**



**DESIGNER SAGE INTERIOR**



**YOUR AUTHORIZED FOREST RIVER DEALER**



Forest River, Inc., 55470 C.R. I., Elkhart, IN 46515-3030

574.389.4600 [www.forestriverinc.com](http://www.forestriverinc.com) [www.forestriveraccessories.com](http://www.forestriveraccessories.com)

All illustrations and specifications contained in this literature are based on the latest product information at the time of publication. Forest River, Inc. reserves the right to make changes in prices, colors, materials, equipment and specifications at any time without notice and assumes no responsibility for any error in this literature. All units are shipped F.O.B. Elkhart, Indiana. Consult your dealer for warranty information.