

2005

CRESCENDO



Real Diesel, Real Affordable



CRESCENDO



CORNER HUTCH
• **MODEL 8356**

GALLEY CONVENIENCE...

Our wide-open galley offers all the comforts of your kitchen at home. 3-burner high performance range; 2-door, 2-way refrigerator and large convection microwave, you will be able to prepare any of your family's favorite meals.



KITCHEN • MODEL 8386

COMFORT...

Deep set superslides in the main living area dramatically increase the living space of this Motorcoach. Gulf Stream's very own Comfort Plus furniture adorns the entire RV.



SOFA • MODEL 8356



DINETTE • MODEL 8386

LUXURIOUS DINING ...

Gulf Stream delivers true comfort in the design and construction of the dinette table and seating. This dinette offers plenty of space for a full dinner setting and delivers relaxation with Comfort Plus steel spring seating topped off with panoramic windows for the best open view while dining.

Seats also fold up to provide out-of-the-way storage for your travel accessories.



LIVING QUARTERS • MODEL 8386

SPACIOUS LIVING QUARTERS...

Open living areas that incorporate large slide rooms and residential style furniture make home away from home very comfortable.

The overhead flat screen TV and the entertainment cabinet provide plenty of storage for music and movies to entertain everyone on a rainy day or quiet evening.



CRESCENDO



MODERN COCKPIT...

Driving the large and powerful Crescendo may be intimidating at first but once you become accustom to the controls and smooth handling of the intense 350 horsepower machine you will feel right at home in our ergonomic cockpit designed to put the controls right at your fingertips.



BATHROOM...

The bathroom in the Crescendo makes it easy to prepare for the day ahead. The medicine cabinet mirror and under-sink storage gives you room to hide away personal products, and the skylight in the shower stall provides natural light and additional headroom for tall travelers.



BEDROOM STORAGE...

The Bedroom of the Crescendo delivers plenty of storage for both his and her clothing. All Floorplans include deep dresser drawers and large wardrobe storage to hang attire.



RESTFUL NIGHTS...

Gulf Stream knows that a comfortable night's sleep is an integral part of a great travel experience. That's why we give you many amenities that you enjoy at home in our cozy bedroom areas. Items including a Queen size bed, windows at the head of the bed for ventilation, air conditioning, vanity mirror, overhead storage and Optional 20" flat screen television.

GULF STREAM
COACH, INC.



BEDROOM • MODEL 8356

Crescendo Exclusive Features & Benefits

**SOLID
HARDWOOD
CABINETY**



**PREDRILLED
HARDWOOD
CONSTRUCTION**

Our residential style cabinets are constructed of solid hardwood doors and fronts that are predrilled and screwed then they are stained and top coated with a furniture grade finish that provides long lasting beauty and durability as well as adding strength and quietness to your motorhome.

COMPETITOR'S CABINETY

Other companies use wrapped cabinet fronts prone to peeling, fading and tearing. The softer composite wood used does not hold screws as well as hardwood resulting in loss of strength and squeaking. Discoloration will degrade the beauty and lower the value of the motorhome.

**GALVANIZED
STEEL
STORAGE
COMPARTMENTS**



Seamless, carpeted, galvanized steel storage compartments safely cradle your valuables. Rust protective paint and foam sealed for extended life and a quiet ride.



Dual metal H-Ducted air conditioning system with foil bubble wrapped insulation for superior climate control.

Excellent Weathering - Maintaining the vehicle's quality appearance enhances its resale value.

**Seamless
FIBERGLASS ROOF**

Tear Resistance - Flexroofs hard abuse resistant finish resists tearing, a condition that can cause leaks and lead to expensive repair.

Low Maintenance - Road grime can easily be removed with normal cleaning maintenance. Rubber chalking due to solar breakdown of the roof surface is eliminated, preserving the original appearance and resale value of the vehicle.

Stain Resistance - Fiberglass Flexroof is designed to resist staining and maintain its quality appearance.

Structural Integrity - Unlike conventional EPDM rubber roof membranes, Flexroof is a structural component of the roof system.

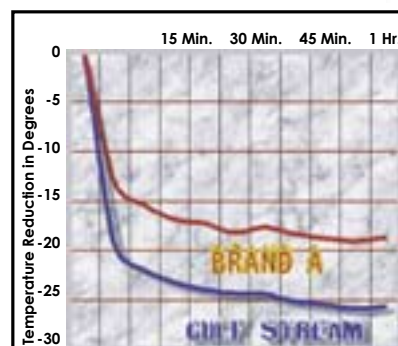
Textured Fiberglass - Helps dissipate heat and prevents tree limbs from tearing or scratching your roof.



Comfort Plus furniture by Gulf Stream Coach features residential styling, solid construction, total comfort and a comprehensive warranty.

FLUSH FLOOR
Slide out rooms

Gulf Stream offers true flush floor slide out rooms to give you more headroom in the slide and eliminates the step up into the slide room that you will experience in many of our competitors motorhomes.



GULF STREAM VS. BRAND A
Cool Down Comparison

- At 15 minutes, Gulf Stream cooled 7 degrees cooler.
- At 30 minutes, Gulf Stream cooled 9 degrees cooler.
- At 1 hour, Gulf Stream cooled 9 degrees cooler.

Finally, empirical data demonstrating the efficiency and performance of a roof air conditioning system versus a floor air conditioning system.

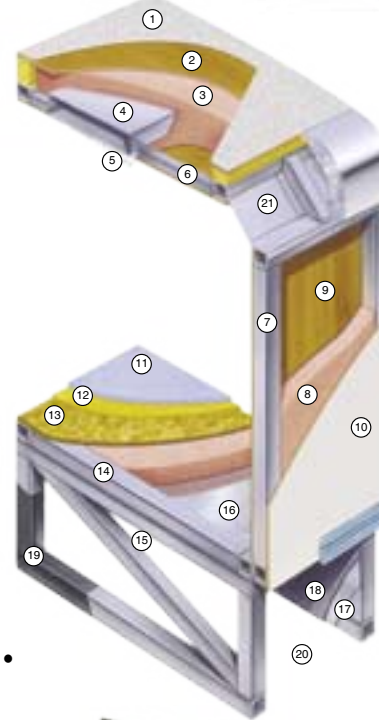
Winner: Roof air conditioning by Gulf Stream

Cradle of Strength



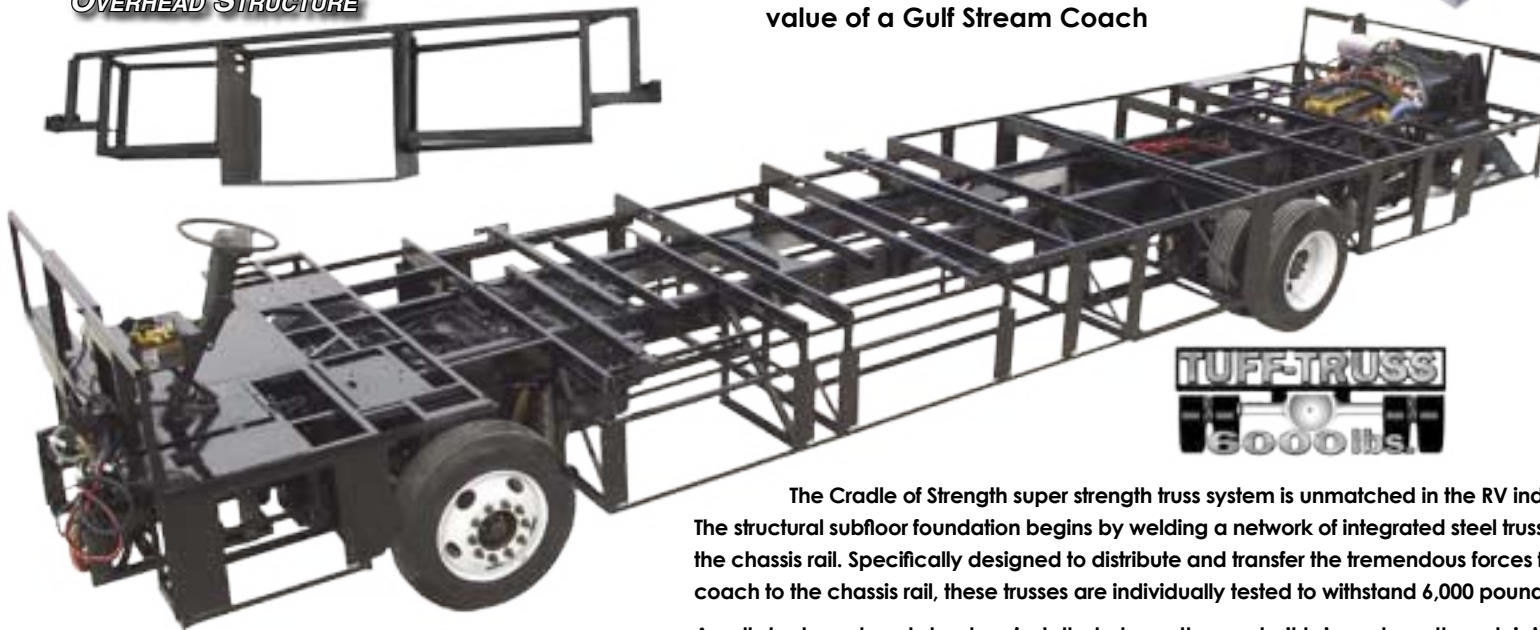
Unlike traditional plywood and foam seating Comfort Plus dinette seating features the strength of steel and the comfort of a sprung cushion.

1. Seamless Fiberglass Roof For Greater Energy Efficiency and Dependability.
2. Luan Decking for Additional Strength.
3. Molded, High Density EPS (Expanded Polystyrene) Roof Brick Insulation - Provides Consistent Insulation Value as well as Superior Dimensional Rigidity.
4. One-Piece Formed Aluminum Air Conditioning Duct, Completely Surrounded By EPS Insulation.
5. Bubble-Wrapped Foil Insulation Provides Superior Insulation and Helps Prevent Condensation.
6. Rugged Welded Tubular Aluminum Roof Framing.
7. Rugged Heavy-Gauge Tubular Aluminum, Fixture Welded to Form the Sidewall Framing.
8. High-Density EPS Insulation Provides Superior Lamination and Bonding Characteristics and Insures Greater Energy Efficiency.
9. Interior Wall Panels Securely Laminated to Sidewall Framing.
10. "Super Slick" Fiberglass Exterior Vacuum-bond Laminated to Sidewall Framing for Lasting Beauty and Durability.
11. High-Quality Stain-Resistant Carpeting Available in Designer Coordinated Colors.
12. Extra-Thick Padding Under Carpet Provides Extra Comfort and Increases Carpet Durability.
13. Seamless Structurewood Floor Decking Laminated to Steel Floor Structure Assures a Quiet, Long-Lasting Rigid Floor.
14. Heavy-Gauge Tubular Steel Framing, Fixture Welded for Extra Strength and Stability.
15. Heavy-gauge Tubular Steel Framed, Fixture Welded Floor Truss System Provides the Strongest Foundation in the Industry.
16. Seamless Layer of Galvanized Steel Securely Laminated to the Steel Floor Framing.
17. Galvanized Steel Used to Form Each Storage & Holding Compartment.
18. Durable All-Weather Carpeting Completes Each Accessible Storage Compartment, Providing Extra Protection for Luggage and Valuables.
19. Rust-Prohibitive Paint Coating Applied to All Steel Framing Assures Corrosion and Rust Protection.
20. The Industry's Strongest, Most Spacious Exterior Storage Compartments.
21. Reinforced Heavy-Gauge Steel "W" Transition.



TAKE THE TIME TO COMPARE...
and you will see the exceptional value of a Gulf Stream Coach

**ALL STEEL
OVERHEAD STRUCTURE**



The Cradle of Strength super strength truss system is unmatched in the RV industry. The structural subfloor foundation begins by welding a network of integrated steel trusses to the chassis rail. Specifically designed to distribute and transfer the tremendous forces from the coach to the chassis rail, these trusses are individually tested to withstand 6,000 pounds each.

An all steel overhead structure installed above the cockpit brings strength and rigidity to the upper portion of the coach providing a safe strong platform to install a TV that will not break free in an impact while maximizing overhead storage.

NICKEL PLATE HARDWARE



CRESCENDO

Exterior Features...

CONTEMPORARY LOOKS...

Full body paint and two graphic options both protect the exterior and offer a cutting edge look with classic simplicity. Gulf Stream delivers the options you want to protect your investment, suit your budget and visual preference.

EXTERIOR STORAGE...

The practice of Raised Rail Construction delivers more Ceiling height while increasing the amount of underbody storage space. Gulf Stream Coach uses one piece steel boxes in our underbody storage compartments which are then carpeted on the inside to protect your belongings while traveling down the road and coated with anti-corrosion paint on the underside to prevent deterioration. Slam latch doors on each storage compartment with lights in each and electrical outlets in two will provide all the conveniences you need to load and unload safely with ease.



FULL BODY PAINT AND PAINTED GRAPHICS OPTION
(Crescendo logos are vinyl decals)



FULL BODY PAINT WITH HI-TECH VINYL GRAPHICS



SPACIOUS BASEMENT STORAGE



THE DIFFERENCE IS IN THE PRICETAG

THE CRESCENDO IS **REAL DIESEL, REAL AFFORDABLE**

SEE FOR YOURSELF!

THE CRESCENDO DIESEL PUSHER MOTORHOME MODELS COSTING

THOUSANDS LESS GIVES YOU:

- 350hp Catipilliar Large Block Sleeved Diesel Engine
- 6 Speed Allison Transmission
- Raised Rail Construction
- Full Air Suspension
- 7.5 Quiet Diesel Generator
- Full Air Brake System
- Two, Three or Four SlideRooms
- Front A/C and Optional Rear A/C
- Home Theatre System w/ DVD and 24" Flatscreen TV
- Seamless Fiberglass Roof
- 27,910 lbs. GVWR
29,410 lbs. GVWR
- Residential Crown Molding
- Hardwood Cabinetry
- Laminated Sidewalls
- Cradle of Strength Construction
- Full Body Paint with Hi-Tech Vinyl Graphics
- 40,000 BTU Front Furnace
25,000 BTU Rear Furnace

THE COMPETITION'S CLOSEST-IN- COMPARISON DIESEL COSTING

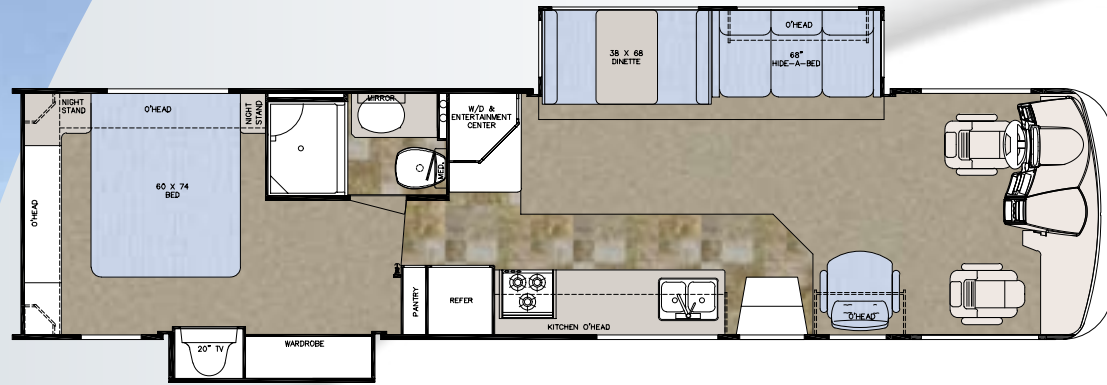
THOUSANDS MORE GIVES YOU:

- 300 hp Cummins Small Block Non-Sleeved Diesel Engine
- 5 Speed Allison Transmission
- Standard Rail Chassis
- Front air suspension
- 7.5 Generator
- Full Air Brake System
- One or Two Slide Rooms
- Front A/C
- 4 speaker surround sound w/ VCR and 24" TV
- Vinyl Roof
- 27,910 lbs. GVWR



CRESCENDO

MODEL 8356



Chassis	Freightliner
Engine	350 Cat
Fuel	100
GVWR	27,910
Length	36'-4"
Width	101"
Height w/AC	11'-10"
Interior Height	80"
Wheelbase	228"
Fresh	75 gal.
Grey	40 gal.
Black	40 gal.
LP Gas Tank	115 lbs.
Furnace (BTU's)	40,000/25,000
Water Heater w/DSI	10 gal.

MODEL 8386



Chassis	Freightliner
Engine	350 Cat
Fuel	100
GVWR	29,410
Length	38'-8"
Width	101"
Height w/AC	11'-10"
Interior Height	80"
Wheelbase	252"
Fresh	75 gal.
Grey	40 gal.
Black	40 gal.
LP Gas Tank	115 lbs.
Furnace (BTU's)	40,000/25,000
Water Heater w/DSI	10 gal.

MODEL 8408



Chassis	Freightliner
Engine	350 Cat
Fuel	100
GVWR	29,410
Length	40'-9"
Width	101"
Height w/AC	11'-10"
Interior Height	80"
Wheelbase	276"
Fresh	75 gal.
Grey	40 gal.
Black	40 gal.
LP Gas Tank	115 lbs.
Furnace (BTU's)	40,000/25,000
Water Heater w/DSI	10 gal.



Interior & Decor

- Natural Oak Cabinet Doors
- Solid Surface Countertops
- 22" Metal Drawer Guides w/Nylon Rollers.
- Silverware Drawer and Drawer Front
- Residential Sized Cabinets and Overheads
- Windshield Privacy Drape
- 3-Way Driver & Passenger Seats
- Deluxe Carpet w/Pad
- Coordinated Bedspread & Pillow Shams
- Lighted Closets
- Decorator Mirror (where available)
- Generous Overhead Storage
- Pleated Shades
- Crown Molding Throughout

Appliances

- 3-Burner High-Performance Range
- Convection Microwave
- Lighted Power Range Hood
- Double Door, 2-Way Refrigerator

Bath & Water

- Demand Water System
- City Water Hook-Up
- Kitchen Sink Cover
- Residential Rectangular Shower
- Mirrored Medicine Cabinet
- Deluxe Porcelain Pedal Stool w/Sprayer
- Sky Dome Over Shower
- Glass Shower Enclosure

Electrical Systems

- Easy-Access Dual Battery System
- 12-volt, 80-Amp Converter
- 50 AMP Service
- Automotive-Type, Color-Coded Wiring
- Lighted Entry & Aisle Lights
- Directional Reading/Map Lights

- Battery Disconnect
- 4 6V Batteries (coach 12V power) 8408
- 2 12V Batteries (coach 12V power) 8356, 8386
- 2 12V Batteries (chassis 12V power)

Exterior & Construction

- "Cradle of Strength" Construction:
 - Welded Steel Sub-Floor Truss System
 - 1-1/2" Tubular Metal Cage Construction on Sidewalls & Roof
 - Insulated Floors w/Virtually Seamless Structurewood Decking
 - Vacuum-Bond Laminated 2" Thick Sidewall Construction Smooth Filon Fiberglass
- High-Density Block Foam Insulation Throughout Sidewalls, Roof & Floor
- Radiused Laminated Fiberglass Roof w/Tubular Metal Rafters
- Molded Roof Brick Insulation in Roof, Surrounding Ducted Roof A/C Vents
- Heated & Fully Enclosed Holding Tanks
- Automotive-Style Bumpers
- Deluxe Outside Mirrors
- Generous Pass-Through Basement Storage
- Hinged Exterior Storage Doors
- Exterior Storage Compartment Latches & Locks
- Fully Welded Steel Firewall
- Below Floor Storage Area's are Laminated with Galvanized Steel (not plastic)

Heating, Ventilation & A/C

- Ducted Furnace w/Elect. Ignition (40,000 / 25,000 BTU's)
- Ducted Roof A/C

Chassis

- Freightliner Custom Chassis, Catipillar 350 HP, Rear Radiator 860 ft. lb. Torque, Allison 6-Speed Electronically Shifted Automatic Transmission
- C-Channel Type, Raised-Rail Steel Chassis Frame

- Anti-Lock Brake System
- Air Brakes
- Full Air-Ride Suspension w/Auto Leveling System and Pure Air Plus Heated Air Dryer
- Allison MD 3060P 6-Speed Electronically Shifted Automatic Transmission
- 22.5 Radial Tires
- Steel Wheel Inserts

Deluxe Standard Features

- Auto Dash Air Conditioner
- Auto Cruise Control
- AM/FM CD w/4 Spkrs.
- Monitor Panel
- Stainless Steel Entry Handle
- Power Vent in Commode
- Converter w/Battery Charger
- Auxiliary Battery
- Carbon Monoxide Detector
- TV Antenna
- LP Gas Leak Detector
- Awning Rail
- Flush Floor Slideouts
- Hydraulic Jack Leveling System
- Color Back-up Monitor
- 24" Color Flat Screen TV in Front Overhead

Popular Options

- ☐ Dishwasher (8356)
- ☐ Washer/Dryer
- ☐ Diesel Generator
- ☐ 20" Flat Screen TV in Bedroom
- ☐ Deluxe Exterior Paint Graphics
- ☐ G-Sound Surround Sound
- ☐ 10 cu/ft Side by Side Refrigerator
- ☐ 2000 Watt Invertor
- ☐ Maple Hardwood Cabinetry
- ☐ 13,500 BTU A/C in Bedroom



The Gulf Streamers RV Club is a valuable benefit to all Gulf Stream owners. Members enjoy staying active and participating in the various rallies and caravans offered throughout the United States and Canada. Others simply enjoy the value of receiving their Main Stream, the club's 44-page newsletter, with all its up-to-date product information, service tips and company highlights. Whether or not group camping is a part of your RV use, everyone can benefit from the Emergency Road Service and Gulf Streamers Insurance options. Both are available at competitive rates with friendly, reliable service. Another great benefit is the 10% Program, where campgrounds throughout the U.S. and Canada provide Gulf Streamers with a 10 percent discount on camping. As a member, you'll also receive discounts on National Theme Parks and special attractions, including RV and travel guides, directories and magazines.

Rally and caravan participants spend time touring attractions, enjoying fabulous meals, taking in area highlights and shows, while having plenty of free time to relax or explore on their own. Our pre-scouted events include knowledgeable staff to assure you of the finest routes, the tastiest restaurants and the friendliest atmosphere to help make the most out of your RV experience. Special rallies throughout the year also include Gulf Stream supplier seminars, complimentary minor repairs by Gulf Stream technicians, Gulf Stream dealer product displays and round table discussions to voice your product improvement ideas.

Coach-Net®
24 HR. EMERGENCY ROADSIDE ASSISTANCE

- One Year Coach-Net Membership
- Towing and Winching
- Flat Tire Change
- Mobile Mechanic
- Delivery of emergency Fluids
- Jump-Start / Battery Boost
- Lockout



GULF STREAM FACILITIES...

Located in the heart of the Amish country, the complex, along with Gulf Stream's affiliate, Fairmont Homes, Inc., covers over 400 acres and includes more than 1.5 million square feet of state-of-the-art manufacturing facilities. With over 20 years of manufacturing experience producing quality Recreational Vehicles, Gulf Stream is the leading manufacturer of high quality and high value RV products that are distributed through a partnership relation with independent dealers who are focused on meeting customer expectations.

GULF STREAM
COACH, INC.

Quality, Comfort, Innovation

GULF STREAM EXCEPTIONAL VALUE...

Your family and friends will feel safe and comfortable wrapped in Gulf Stream's "Cradle of Strength". Comfort, Quietness and Insulation from the elements is what you will experience from Gulf Stream's "Tried and Tested" Motorhomes. Compare... and you will find the exceptional value of a Gulf Stream Motorhome.

POST OFFICE BOX 1005

• YOUR GULF STREAM COACH DEALER •

NAPPANEE, IN 46550



VISIT

WWW.GULFSTREAMRV.COM

**FOR MORE DETAILED INFORMATION...
OR CALL 1-800-765-8787-EXT. 3288**

For more information and available options, contact your local Gulf Stream dealer, www.gulfstreamRV.com or Gulf Stream Coach, Inc. Gulf Stream Coach, Inc., reserves the right to make changes in prices, colors, materials, components and specifications and to discontinue models at any time without notice or obligation. Gulf Stream Coach, Inc., assumes no responsibility for any error in type or print reproduction of specifications or floorplans in this brochure. Photographs may show equipment or items that are optional and are not included in the purchase price of the coach. Test drive and review a current model at your nearest Gulf Stream dealer. © 2002 Gulf Stream Coach, Inc., Nappanee, Indiana U.S.A.

7/04-SP-10k