

GULF STREAM COACH

CLASS A DIESEL MOTORHOMES

2007

FRIENDSHIP

G8



GULF STREAM



COACH, INCORPORATED

FAMILY VALUE

*The Most Important Friendship
We've ever built is yours.*

FRIENDSHIP G8



COCKPIT • UNIVERSAL

MODERN COCKPIT...

Driving the large and powerful Friendship may be intimidating at first, but once you become accustom to the controls and smooth handling of the intense 350 horsepower machine you will feel right at home in our ergonomic cockpit designed to put the controls right at your fingertips.

STANDARD ELECTRONICS PACKAGE 30" LCD



LOW-PROFILE SATELITE



GPS / MP3 SYSTEM



DINETTE • MODEL 8708

FINE DINING...

The dinette of the 8708 Friendship is available in a standard freestanding table with chairs and comes freestanding with chairs in the sun room slideout in the 8411. This dinette gives you plenty of room for fine dining and the ability to entertain in style and comfort in your new home on wheels.

ELEGANT INTERIORS...

The Friendship wows guests with it's impressive interior decor. This luxury coach features deluxe carpet, designer, three-accent decor, and your choice of solid cherry hardwood, elegant white laminate or white laminate with cherry accents.



LIVING AREA • MODEL 8708



KITCHEN

SPACIOUS KITCHEN...

The kitchen in the Friendship line of luxury coaches gives you plenty of room with the addition of seven foot six inch ceilings Gulf Stream is able to offer taller kitchen cabinets as well as larger overhead cabinets throughout the motorhome. Friendship has the appliances you need to prepare all of your favorite meals. This kitchen setup includes 3-burner range with a large over the range convection microwave giving you ventilation for cooking, and a microwave large enough to cook a 9 lb. turkey! Not to mention a large dual deep basin sink which includes residential faucet and hand sprayer.

GULF STREAM



COACH, INCORPORATED

FAMILY VALUE



***GULF STREAM EXCLUSIVE SUN ROOM FEATURING
ALL NEW WHITE LAMINATE WITH CHERRY ACCENTS • MODEL 8411***

FRIENDSHIP G8



Gulf Stream's Two-Zone living concept gives you 30% more room to utilize throughout the day. By adding a sitting area to the bedroom and giving you the ability to shut the bedroom off from the rest of the coach allows you to enjoy TV, reading or sleeping in private with peace and quiet.



BEDROOM STORAGE...

The bedroom of the Friendship delivers plenty of storage for both his and her clothing. All floorplans include deep dresser drawers and large wardrobe storage to hang attire.

BATHROOM...

The bathroom in the Friendship makes it easy to prepare for the day ahead. The medicine cabinet mirror and under-sink storage gives you room to hide away personal items, and the skylight in the shower stall provides natural light and additional headroom for tall travelers.



RESTFUL NIGHTS...

Gulf Stream knows that a comfortable night's sleep is an integral part of a great travel experience. That's why we give you many amenities that you enjoy at home in our cozy bedroom areas. Items including Queen and King (8708) size beds, windows at the head of the bed for natural light and ventilation, air conditioning, vanity mirror, overhead storage and Optional 20" television.



GULF STREAM



COACH, INCORPORATED

FAMILY VALUE



KING SIZE BED WITH POWER INCLINE BACK & HEAD SUPPORT • MODEL 8708

FRIENDSHIP G8



*BLACK/SILVER EXTERIOR
GRAPHICS PACKAGE*



*TAN EXTERIOR
GRAPHICS PACKAGE*

"Store-Galore" Organizers Maximize basement storage with stacking bins to protect your cargo and keep it in place.



Exterior Trash Hatch. Avoid dragging messy trash through your coach. Empty the kitchen trash from outside.



**Easy-Glide
Basement
Storage Drawer**



Convenient air and water hose storage in a lighted compartment prepared for outside entertainment center



Rain or Shine

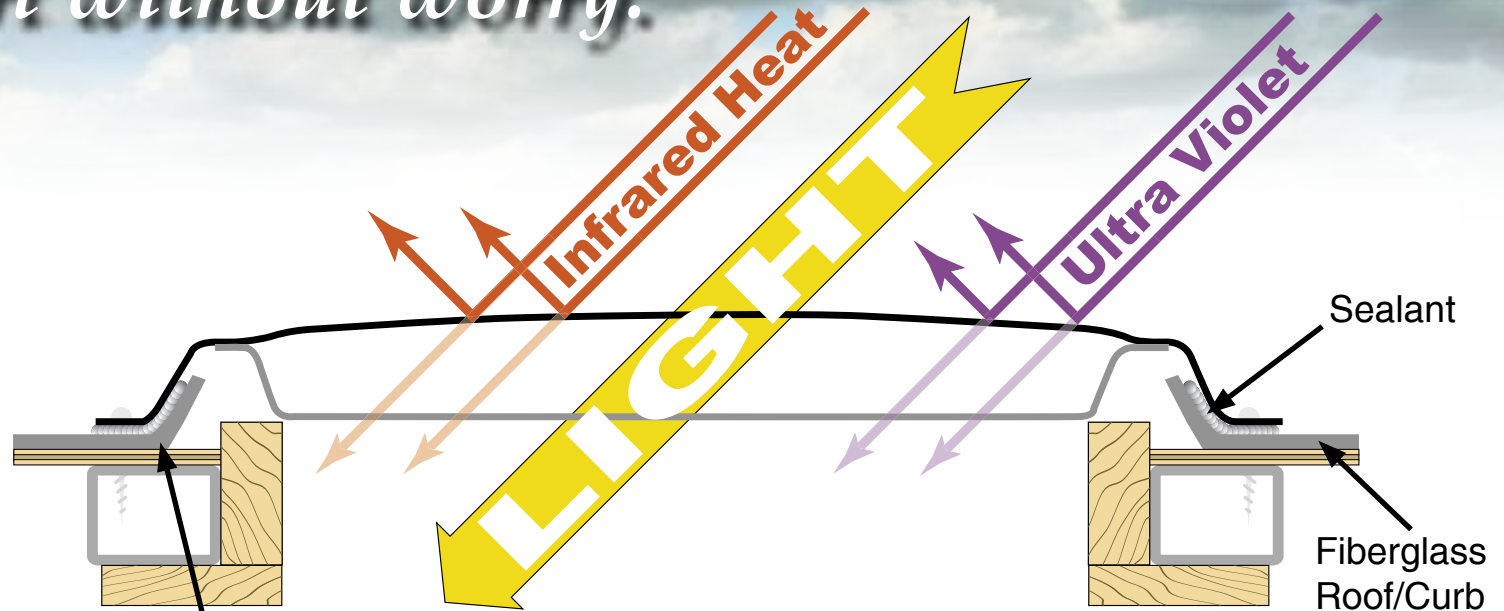
Comfort without worry.

GULF STREAM
COACH, INCORPORATED
FAMILY VALUE

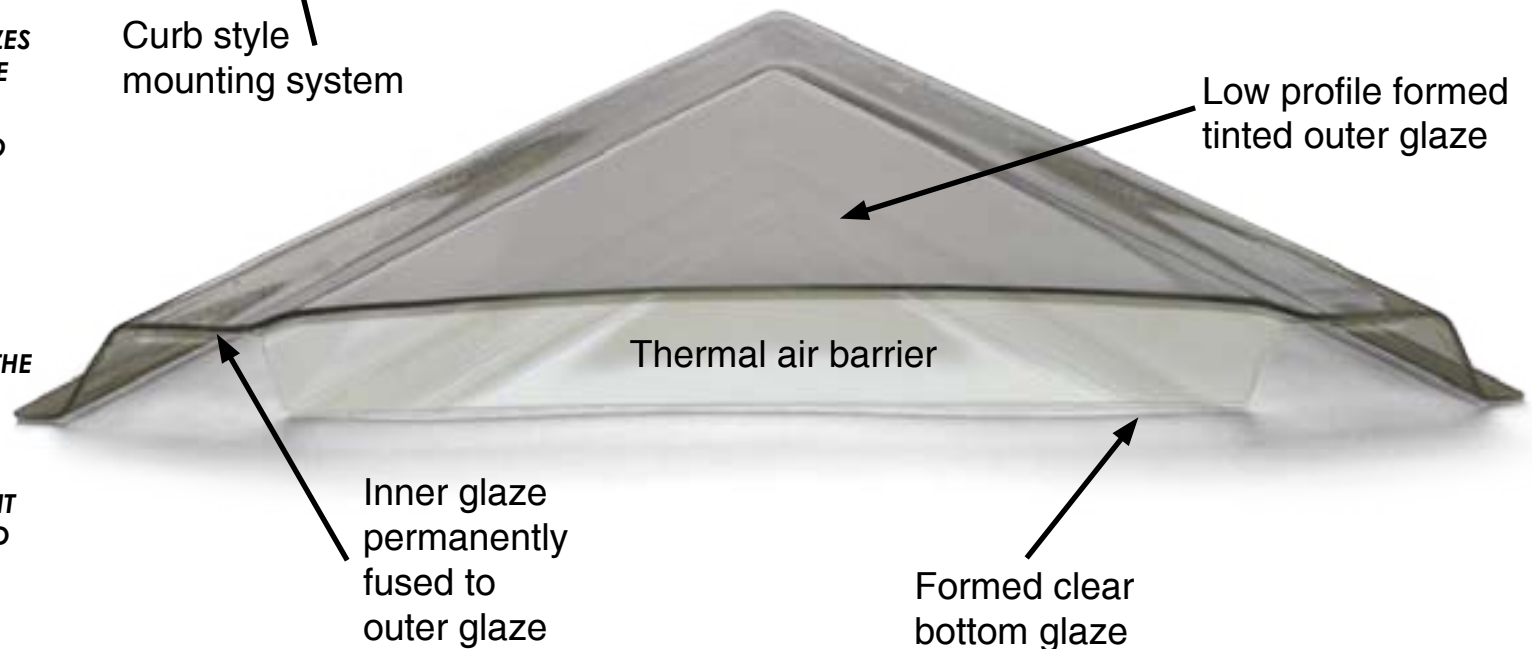
PATENTED SUN ROOM DESIGN...

Open panoramic views, natural lighting and spacious freestanding dinette are just a few of the benefits of the Gulf Stream sun room. More important, is the peace of mind knowing the sun room's skylights are designed to protect the interior from damaging UV light, prevent leaks and aid in climate control.

- **DESIGNED BY GULF STREAM EXCLUSIVELY FOR SLIDEOUT ROOMS.**
- **CURB STYLE INSTALLATION ELIMINATES LEAKS.**
- **BOTH TOP AND BOTTOM GLAZES ARE FORMED OF UNBREAKABLE POLYCARBONATE.**
- **THE OUTER GLAZE IS TINTED TO MINIMIZE SOLAR HEAT GAIN. THE BOTTOM GLAZE IS CLEAR.**
- **COLLECTIVELY, BOTH GLAZES ELIMINATE 97% OF THE DAMAGING UV LIGHT.**
- **ALL WALLS AND CEILING OF THE SUN ROOM ARE INSULATED FOR THERMAL AND SOUND CONTROL.**
- **EVERY WINDOW AND SKYLIGHT IN THE SUN ROOM IS EQUIPPED WITH A DAY/NIGHT SHADE.**



Curb style mounting system



Friendship Exclusive Features & Benefits

**SOLID
HARDWOOD
CABINETRY**



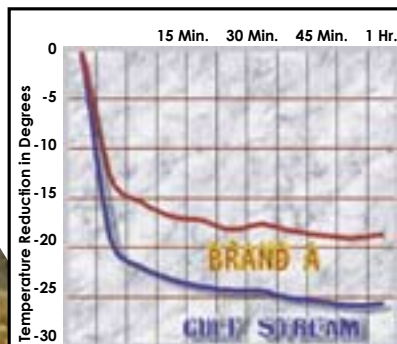
**PRE-DRILLED
HARDWOOD
CONSTRUCTION**

Our residential style cabinets are constructed of solid hardwood doors and fronts that are pre-drilled and screwed then they are stained and top coated with a furniture grade finish that provides long lasting beauty and durability as well as adding strength and quietness to your motorhome.

COMPETITOR'S CABINETRY

Other companies use wrapped cabinet fronts prone to peeling, fading and tearing. The softer composite wood used does not hold screws as well as hardwood resulting in loss of strength and squeaking. Discoloration will degrade the beauty and lower the value of the motorhome.

Dual metal H-Ducted air conditioning system with foil bubble wrapped insulation for superior climate control.



GULF STREAM VS. BRAND A Cool Down Comparison

- At 15 minutes, Gulf Stream cooled 7 degrees cooler.
- At 30 minutes, Gulf Stream cooled 9 degrees cooler.
- At 1 hour, Gulf Stream cooled 9 degrees cooler.

Finally, empirical data demonstrating the efficiency and performance of a roof air conditioning system versus a floor air conditioning system.
Winner: Roof air conditioning by Gulf Stream

Excellent Weathering -

Maintaining the vehicle's quality appearance enhances its resale value.

**Seamless
FIBERGLASS ROOF**

Tear Resistance - Flexroof's hard abuse resistant finish resists tearing, a condition that can cause leaks and lead to expensive repair.

Low Maintenance - Road grime can easily be removed with normal cleaning maintenance. Rubber chalking due to solar breakdown of the roof surface is eliminated, preserving the original appearance and resale value of the vehicle.

Stain Resistance - Fiberglass Flexroof is designed to resist staining and maintain its quality appearance.

Structural Integrity - Unlike conventional EPDM rubber roof membranes, Flexroof is a structural component of the roof system.

One Piece Molded Smooth Fiberglass -

Helps dissipate heat and prevents tree limbs from tearing or scratching your roof.



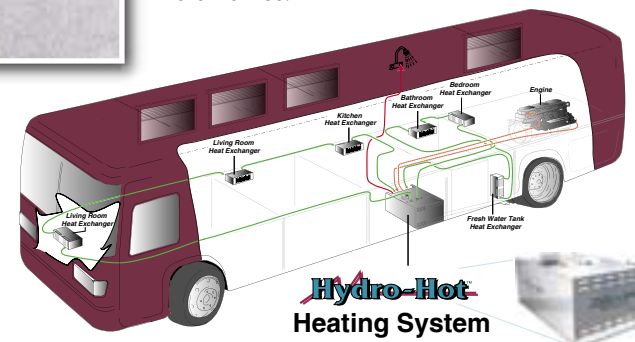
**VILLA
INTERNATIONAL**

Optional Villa furniture offers a level of quality, sophistication, and residential style you can see and expect from a Gulf Stream Coach.

FLUSH FLOOR
Slide out rooms



Gulf Stream offers true flush floor slide out rooms to give you more headroom in the slide and eliminates the step up into the slide room that you will experience in many of our competitors motorhomes.



Hydro-Hot, the innovative solution for heating a diesel powered motorhome. This unique system heats by distributing hot liquid to highly efficient heat exchangers strategically located in zones of the coach putting the heat where you need it when you want it.

Additionally Hydro-Hot provides on-demand hot water eliminating the need for a separate hot water heater.

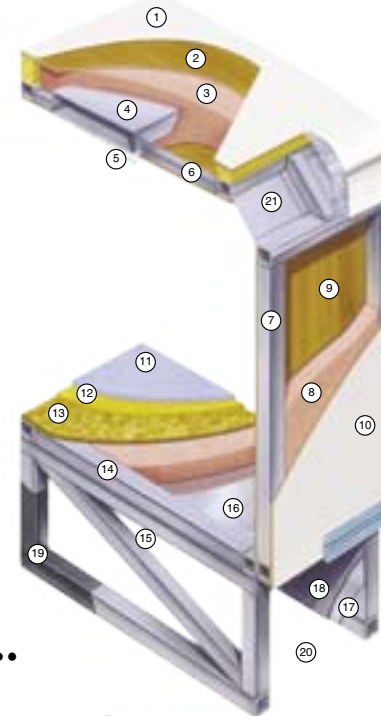


Cradle of Strength



Custom built and hand crafted, utilizing steel framing and eight way hand tied upholstery. Villa, superior furniture for superior coaches.

1. Seamless Molded Fiberglass Roof For Greater Energy Efficiency and Dependability.
2. Luan Decking for Additional Strength.
3. Molded, High Density EPS (Expanded Polystyrene) Roof Brick Insulation - Provides Consistent Insulation Value as well as Superior Dimensional Rigidity.
4. One-Piece Formed Aluminum Air Conditioning Duct, Completely Surrounded By EPS Insulation.
5. Bubble-Wrapped Foil Insulation Provides Superior Insulation and Helps Prevent Condensation.
6. Rugged Welded Tubular Aluminum Roof Framing.
7. Rugged Heavy-Gauge Tubular Aluminum, Fixture Welded to Form the Sidewall Framing.
8. High-Density EPS Insulation Provides Superior Lamination and Bonding Characteristics and Insures Greater Energy Efficiency.
9. Interior Wall Panels Securely Laminated to Sidewall Framing.
10. "Super Slick" Fiberglass Exterior Vacuum-bond Laminated to Sidewall Framing for Lasting Beauty and Durability.
11. High-Quality Stain-Resistant Carpeting Available in Designer Coordinated Colors.
12. Extra-Thick Padding Under Carpet Provides Extra Comfort and Increases Carpet Durability.
13. Seamless Structurewood Floor Decking Laminated to Steel Floor Structure Assures a Quiet, Long-Lasting Rigid Floor.
14. Heavy-Gauge Tubular Steel Framing, Fixture Welded for Extra Strength and Stability.
15. Heavy-gauge Tubular Steel Framed, Fixture Welded Floor Truss System Provides the Strongest Foundation in the Industry.
16. Seamless Layer of Galvanized Steel Securely Laminated to the Steel Floor Framing.
17. Galvanized Steel Used to Form Each Storage & Holding Compartment.
18. Durable All-Weather Carpeting Completes Each Accessible Storage Compartment, Providing Extra Protection for Luggage and Valuables.
19. Rust-Prohibitive Paint Coating Applied to All Steel Framing Assures Corrosion and Rust Protection.
20. The Industry's Strongest, Most Spacious Exterior Storage Compartments.
21. Reinforced Heavy-Gauge Steel "W" Transition.



TAN



MOCHA



SAND DOLLAR CARPET



BLUE



GREEN



BASKET BEIGE CARPET



TONY BERMUDA



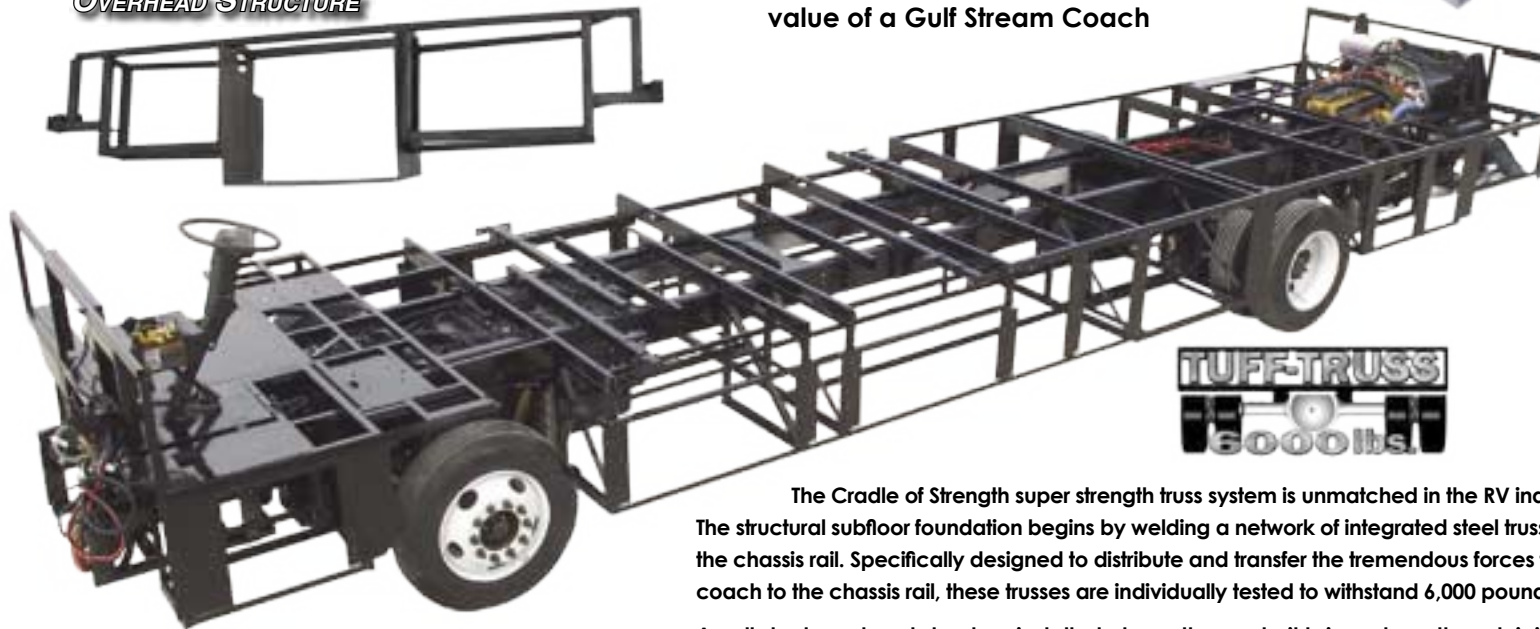
TORCHLIGHT CARPET

RESIDENTIAL HARDWARE



TAKE THE TIME TO COMPARE...
and you will see the exceptional value of a Gulf Stream Coach

ALL STEEL OVERHEAD STRUCTURE

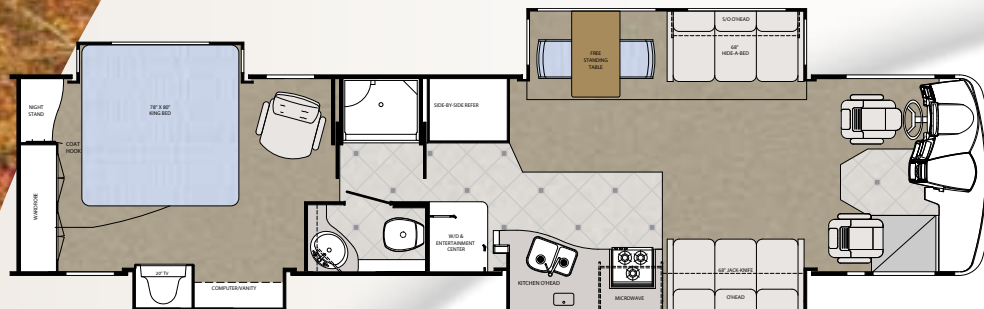


TUFF-TRUSS
6000 lbs.

The Cradle of Strength super strength truss system is unmatched in the RV industry. The structural subfloor foundation begins by welding a network of integrated steel trusses to the chassis rail. Specifically designed to distribute and transfer the tremendous forces from the coach to the chassis rail, these trusses are individually tested to withstand 6,000 pounds each.

An all steel overhead structure installed above the cockpit brings strength and rigidity to the upper portion of the coach providing a safe strong platform to install a TV that will not break free in an impact while maximizing overhead storage.

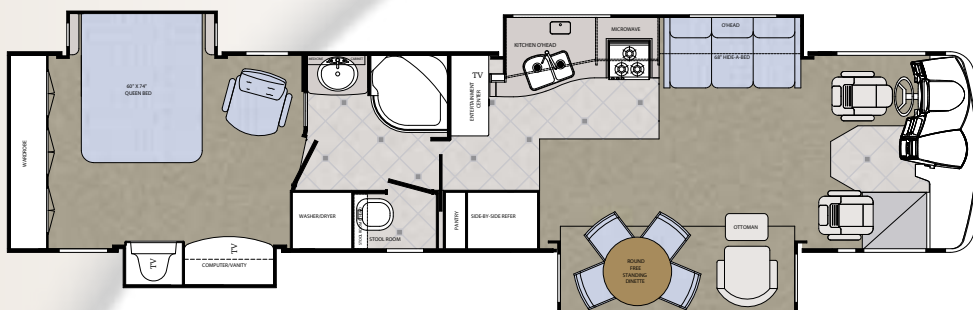
FRIENDSHIP G8



MODEL 8708

Chassis	Freightliner
Engine	350 Cat
Fuel	150
Wheelbase	276"
GVWR	32,000
Length	41'-4"
Height w/AC	12'-6"

Width	100"
Interior Height	90"
Fresh	90 gal.
Grey	75 gal.
Black	75 gal.
LP Gas Tank	85 lbs.
Furnace	Hydro Hot
Water Heater w/DSI	Hydro Hot



MODEL 8411

Chassis	Freightliner
Engine	350 Cat
Fuel	150
Wheelbase	276"
GVWR	32,000
Length	41'-4"
Height w/AC	12'-6"

Width	100"
Interior Height	90"
Fresh	90 gal.
Grey	75 gal.
Black	75 gal.
LP Gas Tank	85 lbs.
Furnace	Hydro Hot
Water Heater w/DSI	Hydro Hot



MODEL 8412

Chassis	Freightliner
Engine	350 Cat
Fuel	150
Wheelbase	288"
GVWR	32,000
Length	42'-2"
Height w/AC	12'-6"

Width	100"
Interior Height	90"
Fresh	90 gal.
Grey	75 gal.
Black	75 gal.
LP Gas Tank	85 lbs.
Furnace	Hydro Hot
Water Heater w/DSI	Hydro Hot



MODEL 8414

Chassis	Freightliner
Engine	350 Cat
Fuel	150
Wheelbase	288"
GVWR	32,000
Length	42'-2"
Height w/AC	12'-6"

Width	100"
Interior Height	90"
Fresh	90 gal.
Grey	75 gal.
Black	75 gal.
LP Gas Tank	85 lbs.
Furnace	Hydro Hot
Water Heater w/DSI	Hydro Hot



Chassis

- 32,000 GVWR, 350 HP CAT FREIGHTLINER, 150 GAL FUEL TANK W/ALUMINUM RIMS (8708 8411)

Décor

- CERAMIC TILE IN KITCHEN, BATH & ENTRY
- CHERRY HARDWOOD INTERIOR
- DAY/NIGHT PLEATED SHADES
- METAL MINI BLIND (ALABASTER) KITCHEN
- PRIVACY CURTAIN
- CORIAN KITCHEN COUNTERTOPS
- VINYL CEILING LINER
- MIRRORING MEDICINE CABINET
- DECORATIVE BEVELED MIRROR DOORS ABOVE SOFA
- DECORATIVE CROWN CEILING MOLDING

Heating & Cooling

- DASH A/C
- (2) 15,000 BTU LOW PROFILE DUCTED ROOF AIR CONDITIONERS
- HYDRO HOT HEATING SYSTEM
- 3-SPEED FANTASTIC ATTIC FAN

Miscellaneous

- ARCTIC PACKAGE
- HYDRAULIC JACK LEVELING SYSTEM
- 10,000 LB TRAILER HITCH
- INTERIOR S.S. ENTRY ASSIST HANDLE
- MUD STORAGE AREA
- CARPETED STORAGE BINS
- STORE GALORE IN BASEMENT
- HEATED HOLDING TANKS
- WATER MANIFOLD SYSTEM (NA CANADA)
- RALLY HOOK UP HOSE FAUCET
- SHOWER HOSE, HEAD & FAUCET
- TELEPHONE HOOKUP
- CABLE TV HOOKUP
- PAPER TOWEL ROLL DISPENSER
- WATER FILL - GRAVITY & CITY
- FIRE EXTINGUISHER
- DELUXE METAL WRAP AWNING
- SLIDE OUT TOPPERS
- SUNROOM SLIDE TOPPER (8411)
- POWER STEPWELL COVER
- POWER SUN VISORS
- GARDEN HOSE & AIR HOSE IN BASEMENT
- EXTERIOR TRASH CONTAINER ACCESS DOOR

Electrical

- POWER CORD REEL
- WALL CLOCK
- BACK-UP MONITOR
- FLUORESCENT CEILING LIGHTING
- WALL SWITCHES FOR ALL CEILING LIGHTS
- AM/FM/CASSETTE STEREO W/CD PLAYER & SPEAKERS
- SONY SURROUND SOUND SYSTEM/DVD PLAYER
- 50 AMP SVC W/CORD & AUTO 110 CHANGEOVER
- EMERGENCY START SWITCH IN DASH
- MAP LIGHTS
- OVERHEAD DEFROST BLOWER
- ANTENNA W/AMPLIFIER, BOOSTER & 2 JACKS
- CB ANTENNA
- (1) PHONE JACK IN KITCHEN & (1) IN BEDROOM
- AUTO DOUBLE ELECTRIC STEP
- 20" SAMSUNG FLAT SCREEN COLOR TV IN BEDROOM
- SONY 24" FLAT SCREEN COLOR TV IN FRONT OVERHEAD
- DSS PREP
- LIGHTED EXTERIOR STORAGE BINS
- DELUXE AIR HORNS

Bath

- POWER VENT IN COMMODE & SHOWER AREA
- PORCELAIN PEDAL STOOL W/SPRAYER
- SKY DOME IN BATH
- RADIUS TUB/SHOWER W/RADIUS GLASS DOOR (8411)
- SHOWER W/GLASS DOOR & SURROUND (8708)
- HOLDING TANK FLUSH KIT

Power

- (4) DEEP CYCLE 6 VOLT COACH BATTERIES
- BATTERY DISCONNECT
- 2000 WATT INVERTER
- 7.5 ONAN DIESEL GENERATOR

Furnishings

- 2-TONE 6-WAY POWER PILOT SEAT
- 2-TONE 6-WAY POWER COPILOT SEAT
- SOFT TOUCH EURO RECLINER & OTTOMAN (PS) (8411)
- CLOTH SLEEPER (HAB) SOFA (DS)
- CLOTH SOFA (PS) (8708)
- 60 X 74 BED W/DELUXE INNERSPRING MATTRESS (8411)
- 78 X 80 KING BED W/INNERSPRING MATTRESS & POWER LIFT (8708)
- 3 POINT SEAT BELTS
- FREE STANDING DINETTE

- W/(2) RESIDENTIAL DINING CHAIRS
- (2) THROW PILLOWS (LOUNGE AREA) &
- (2) BEDROOM PILLOWS
- BEDROOM CHAIR
- SILVERWARE DRAWER
- VANITY BENCH (8411 8708)

Appliances

- SIDE BY SIDE REFRIGERATOR W/ICEMAKER & PURIFIER (NDR1292IMH)
- MONITOR PANEL
- 3-BURNER TOP
- 30" OTR CONVECTION MICROWAVE
- WATER PURIFIER
- 48# LP GAS BOTTLE
- CARBON MONOXIDE DETECTOR
- LP GAS LEAK DETECTOR
- PREP FOR WASHER/DRYER

Exterior

- "CRADLE OF STRENGTH" CONSTRUCTION:
 - Welded Steel Sub-Floor Truss System
 - 1-1/2" Tubular Metal Cage Construction on Sidewalls & Roof
 - Insulated Floors w/ Virtually Seamless Structurewood Decking
 - Vacuum-Bond Laminated 2" Thick Sidewall Construction Smooth Fiberglass
 - High-Density Block Foam Insulation Throughout Sidewalls, Roof & Floor
- PRE-MOLDED FRONT & REAR FIBERGLASS CAPS
- ONE-PIECE FIBERGLASS ROOF
- THERMOPANE WINDOWS
- HEATED & REMOTE EXTERIOR MIRRORS
- REMOTE CONTROL SPOTLIGHT
- FRIENDSHIP DELUXE FULL SIDE BODY PAINT
- SAND & BUFF
- LOGO REAR ROCKGUARD



Popular Options

- ☐ CHASSIS VALUE PACKAGE (REQUIRED)
- ☐ 32,000 GVWR, 400 HP CUMMINS FREIGHTLINER (8708 8411)
- ☐ WHITE LAMINATE INTERIOR W/CHERRY ACCENTS
- ☐ WHITE LAMINATE INTERIOR
- ☐ FULLY AUTO HYDRAULIC JACKS
- ☐ ENTRANCE DOOR AWNING
- ☐ HOT/COLD DRINK TRAY
- ☐ ALUMINUM SLIDING TRAY IN BASEMENT
- ☐ CENTRAL VACUUM SYSTEM
- ☐ ELECTRIC AWNING PACKAGE
 - MAIN AWNING
 - ENTRANCE DOOR AWNING
 - SUNROOM SLIDE OUT TOPPER (8411)
 - WINDOW AWNING
- ☐ 10-DISC CD CHANGER
- ☐ 17" LCD COLOR TV IN LIVING ROOM
- ☐ 30" LCD COLOR TV IN FRONT OVERHEAD
- ☐ 15" FLIP DOWN LCD COLOR TV IN BEDROOM
- ☐ HEAT PUMPS
- ☐ 2-TONE 6-WAY POWER COPILOT BUDDY SEAT W/ FOOT REST
- ☐ SOFT TOUCH SLEEPER (HAB) SOFA IPO CLOTH SLEEPER (DS)
- ☐ (2) FOLDING CHAIRS
- ☐ COMFORT PLUS BOOTH DINETTE IPO FREE STANDING DINETTE (8708)
- ☐ VILLA FURNITURE PACKAGE
 - ULTIMA LEATHER HAB SOFA (DS)
 - POWER PILOT SEAT
 - POWER BUDDY SEAT W/FOOTREST
 - EURO RECLINER W/OTTOMAN (PS) (8411)
 - CLOTH SOFA (PS) (8708)
- ☐ 7.5 GENERAC QUIET DIESEL GENERATOR
- ☐ 2-WAY/4-DOOR NORCOLD REFRIGERATOR W/ ICEMAKER & PURIFIER (1200LRIM)
- ☐ SLIDE OUT FREEZER IN BASEMENT
- ☐ COMBO WASH/DRYER



GULF STREAM



COACH, INCORPORATED

FAMILY VALUE

GULF STREAM FACILITIES...

Located in the heart of the Amish country, the complex, along with Gulf Stream's affiliate, Fairmont Homes, Inc., covers over 400 acres and includes more than 1.5 million square feet of state-of-the-art manufacturing facilities. With over 20 years of manufacturing experience producing quality Recreational Vehicles, Gulf Stream is the leading manufacturer of high quality and high value RV products that are distributed through a partnership relation with independent dealers who are focused on meeting customer expectations.

EXCEPTIONAL VALUE...

Your family and friends will feel safe and comfortable wrapped in Gulf Stream's "Cradle of Strength". Comfort, Quietness and Insulation from the elements is what you will experience from Gulf Stream's "Tried and Tested" Motorhomes. Compare... and you will find the exceptional value of a Gulf Stream Motorhome.



The Gulf Streamers RV Club is a valuable benefit to all Gulf Stream owners. Members enjoy staying active and participating in the various rallies and caravans offered throughout the United States and Canada. The Main Stream, the club Magazine, with up-to-date product information, service tips and company highlights. Members benefit from the Emergency Road Service and Gulf Streamers

Insurance options. Both are available at competitive rates with friendly, reliable service. The 10% discount program at campgrounds throughout the U.S. and Canada. As a member, you'll receive discounts at National Theme Parks and special attractions, including RV and travel guides, directories and magazines. Gulf Streamers spend time touring attractions, enjoying fabulous meals, taking in area highlights and shows to help make the most out of your RV experience. Special rallies throughout the year include Gulf Stream supplier seminars, complimentary minor repairs by Gulf Stream technicians, Gulf Stream dealer product displays and round table discussions to voice your product improvement ideas.

POST OFFICE BOX 1005

• YOUR GULF STREAM COACH DEALER •

NAPPANEE, IN 46550



VISIT

WWW.GULFSTREAMRV.COM

FOR MORE DETAILED INFORMATION...
OR CALL 1-800-765-8787-EXT. 3288

For more information and available options, contact your local Gulf Stream dealer, www.gulfstreamRV.com or Gulf Stream Coach, Inc. Gulf Stream Coach, Inc., reserves the right to make changes in prices, colors, materials, components and specifications and to discontinue models at any time without notice or obligation. Gulf Stream Coach, Inc., assumes no responsibility for any error in type or print reproduction of specifications or floorplans in this brochure. Photographs may show equipment or items that are optional and are not included in the purchase price of the coach. Test drive and review a current model at your nearest Gulf Stream dealer. © 2002 Gulf Stream Coach, Inc., Nappanee, Indiana U.S.A.

11/05-SP-7k