

Montana

The 2006 Montana Fifth Wheel



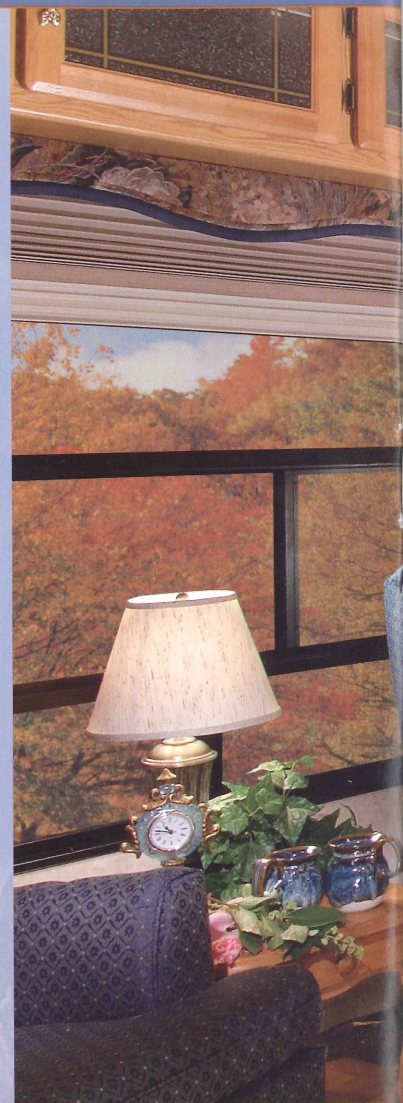
"Built by People who know RVing"



2006



The amazing 3000 RK side lounge, shown here in the Sapphire décor, features an immaculate kitchen area for the ultimate in storage and function. While you are resting in matching hi-back recliners, you will have a spectacular view of the great outdoors or a perfect angle to enjoy the built-in 25" television. Of course, a DVD/CD player with 5.1 surround sound completes a truly residential video and audio experience in every Montana.



The Montana's bedroom features a single-level floor for safety and convenience, abundant storage and 6'5" of head room, maximizing your comfort. A 19" television swivels to the perfect viewing angle.





Move Up To Montana.

At Montana, we believe that, with the right inspiration, you can achieve greatness at most anything—even if it's vacationing, adventuring or just relaxing. We're inspired to build fifth wheels that will enable you to easily achieve all three.

To do this, we know we must build a fifth wheel that provides continuing pleasure over the long haul and in every aspect of the ownership experience. This has been our goal ever since we introduced the Montana.

Montana is the envy of the industry and the Number One choice in North America because we bring together concepts other manufacturers find mutually exclusive — convenience, comfort, quality, innovation and value — and offer it all to you in breathtaking floor plans and interior décors.

It's easy to see why Montana is the standard against which all other fifth wheels are measured.



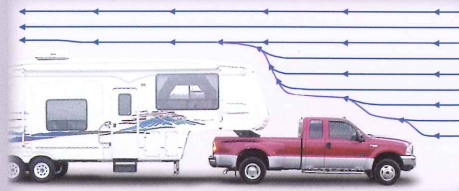
Quality.

A Montana's appearance speaks of class-leading style and comfort. But we are not satisfied with mere good looks. So, we build the Montana as tough and durable as it is beautiful. Realizing that the final quality of the Montana is a direct result of the quality of everything that goes into it, Montana's engineers analyze every component to ensure years of trouble-free usage.

Not everyone offers quality features like Total Surround Aluminum Plus™ framing, all-steel drawer guides complete with roller ball bearings or real wood trim moldings. Other manufacturers find it easier to talk about quality than to create it. Montana's Old World craftsmen are the finest in the industry and continually strive to provide a level of "fit-and-finish" second to none. Your peace of mind is assured because you are purchasing an RV worthy of its established reputation for quality.

The innovative 3650 RK floor plan creates a unique kitchen and living environment unlike any other fifth wheel. Enter the fabulous gourmet kitchen with double slide rooms and an island bar. Notice the generous amount of kitchen counter space and residential-style cabinetry, designed for maximum storage. The spacious living room features an L-shaped hide-a-bed and an atrium-style slide room with oversize windows that allow you to enjoy the scenery while you relax. This model shown in the Desert Sunset décor.

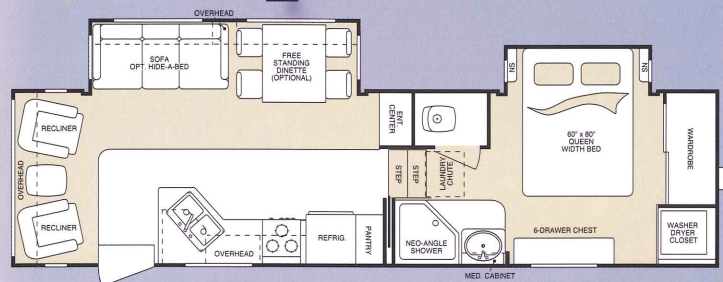
Towability.



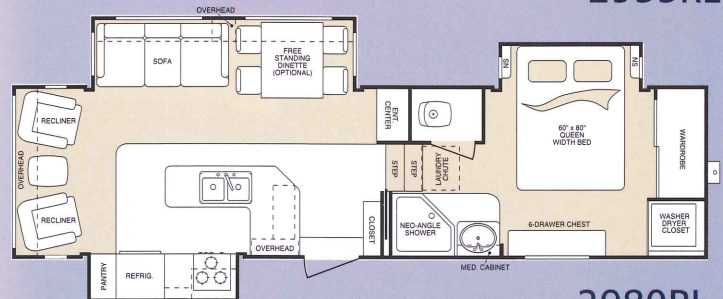
Montana is the finest towing fifth wheel on the market. The reasons are clear and simple. First, lightweight Aluminum-Framing-Plus lowers the

center of gravity, minimizing sway. Next, the Montana is engineered with great weight distribution. (We even separate the LP bottles to spread the load.) Further, Montana's front cap maximizes aerodynamics. The "end point" of the cap sits lower than the top of the truck cab. This strategic design forces air to flow over and around the fifth wheel instead of under it. Better aerodynamics result in less sway, stress-free towing and increased fuel economy.

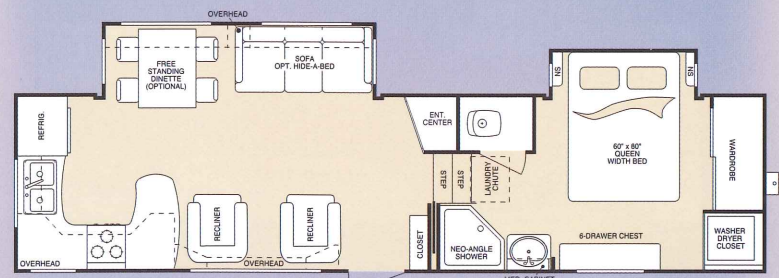
Floorplans.



2955RL



2980RL

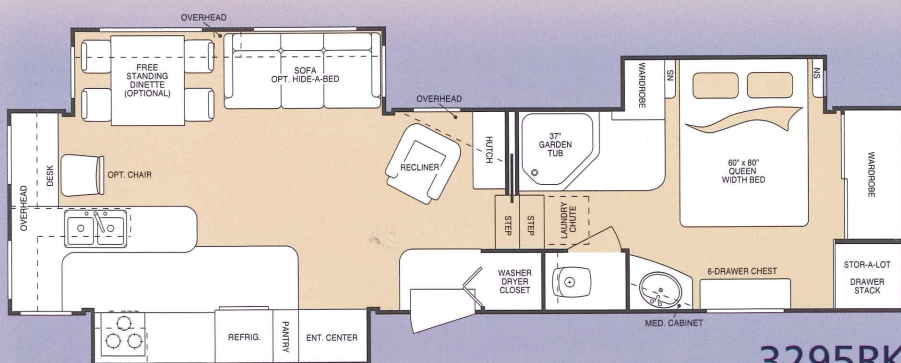


3000RK

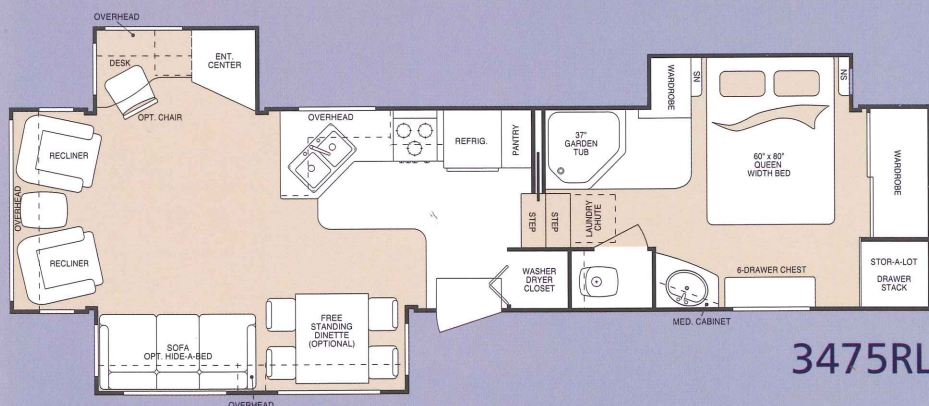
Visit the Montana Owners' Club website, independently created and maintained by Montana fifth wheel owners, at www.montanaowners.com

TOTAL SURROUND™ ALUMINUM PLUS

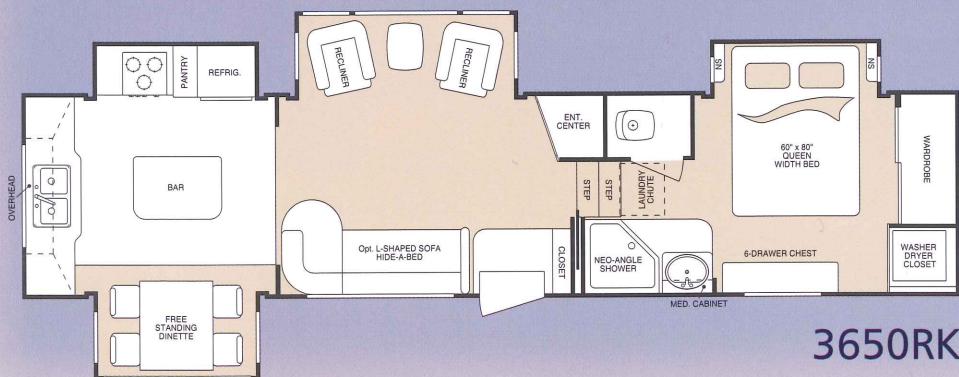
Many Fifth Wheel brands claim to be aluminum framed, but to cut costs most manufacturers use wood framed floors and roofs. At Montana, that's not the case. We build 100% aluminum framing in all the walls and floors, PLUS we utilize state-of-the-art lightweight, machine-fabricated steel rafters in the roof. In addition, for added strength and smoother exterior finish, our one-piece sidewalls are 2" thick and laminated! Check out the difference. You'll be impressed.



3295RK



3475RL

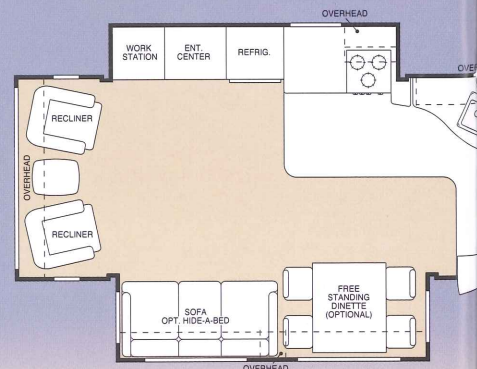


3650RK

Light Bu



We don't recommend driving a truck over the wall of your RV, but isn't it nice to know you could?



MODEL NAME	2955RL	2980RL	3000RK	3295RK	3400RL	3475RL	3500RL	3650RK	3670RL	3685FL
GROSS DRY WEIGHT (UVW) ¹	9575	10230	10115	10845	11710	11035	11445	11035	11160	11100
CARRYING CAPACITY	2410	2245	2320	3640	2455	3115	2440	2995	3140	3290
HITCH	1825	2315	2275	2485	2165	2150	1885	2030	2300	2390
EXTERIOR LENGTH ²	32' 0"	32' 0"	34' 1"	34' 11"	37' 1"	36' 9"	37' 1"	37' 1"	36' 6"	36' 10"
EXTERIOR HEIGHT (TOP OF A/C)	12' 9"	12' 9"	12' 9"	12' 9"	12' 9"	12' 9"	12' 9"	12' 9"	12' 9"	12' 9"

¹ Hi-gloss fiberglass option will add approximately 600 lbs.

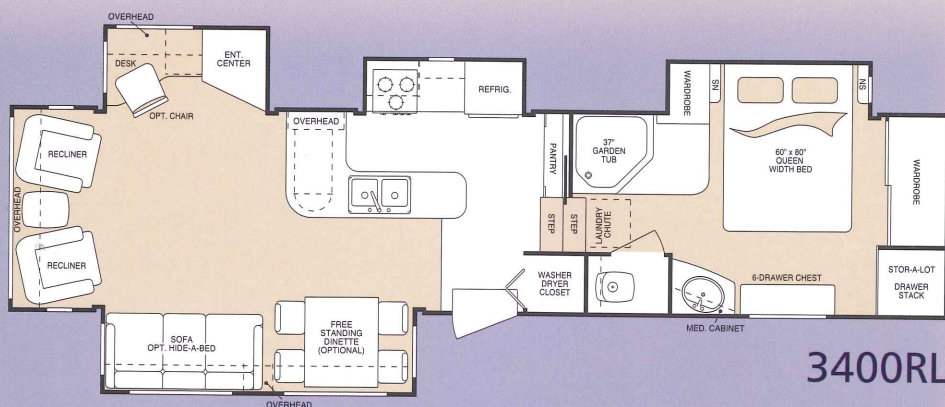
² Does not include hitch pin

GVWR = Gross Dry Weight + Carrying Capacity

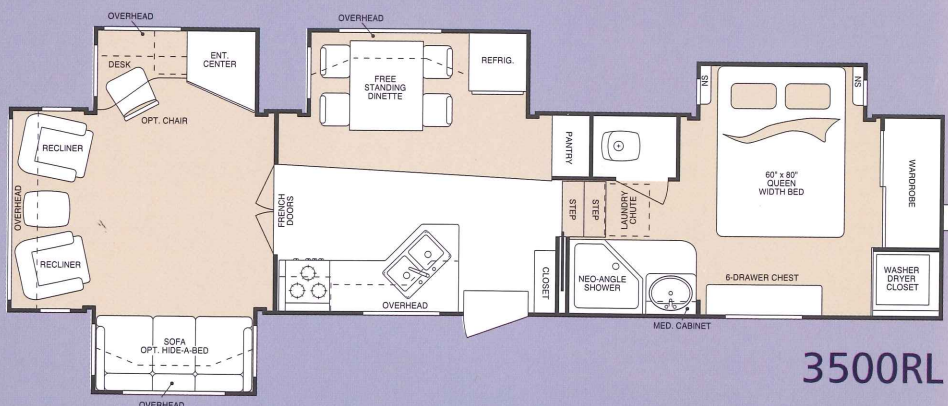
Due to continuous product improvement, modifications may be made without prior notification or obligation. Specifications are calculated as base unit with standard equipment only.

Strong.

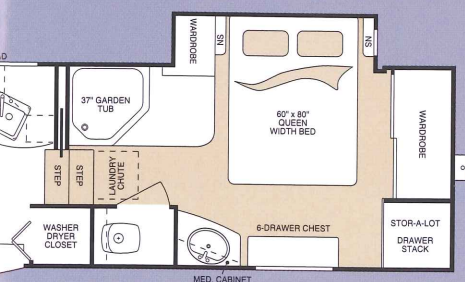
Montana's state-of-the-art laminated and layered sidewall construction creates a lighter yet stronger wall than you'll find in any comparable fifth wheel. Inside this amazingly sturdy wall, solid foam insulation provides year-round comfort with higher insulation factors while also reducing outside noise. And, solid foam will not lose its efficiency through settling in your sidewall (unlike fiberglass insulation).



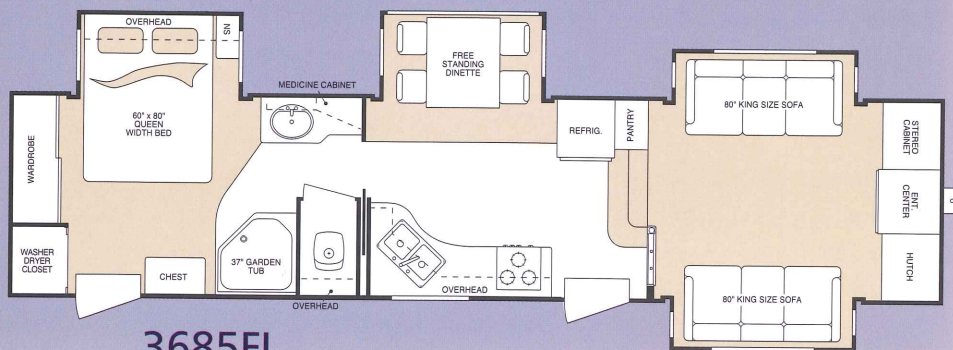
3400RL



3500RL



3670RL



3685FL

Comfort.

Your level of joy is directly proportional to your level of comfort. That's why Montana pays so much attention to providing comfort. Extra tall slide rooms and 6'5" of height entering the bedroom suite allow ample head room. Full-sized designer sofas invite you to relax during the day and an optional king size bed promises to make your nights full of peaceful bliss.

More examples of comfort-focused amenities include big, fully vented windows, residential-grade carpeting, and large glass enclosed shower stalls. The result—your sanctuary from the cares of the world is created.

Style.

Three fashionable color schemes form the foundation for Montana's carefully coordinated room décors. Beautiful drapery and upholstery fabrics, designer hardware, fashionable window treatments, walls and countertops in the latest colors and materials — all contribute to Montana's legendary style, setting your fifth wheel home apart from all others in a quiet but dramatic statement that says you've "arrived."

The "Spacemaker" free-standing dinette features a tabletop which slides forward and back on either side so it is easier to enter and leave the dining area. The elegant, single pedestal design allows ample leg room under the table. You'll find plenty of additional storage under the hinged seat cushions. Upon close observation, you will recognize the quality of this American-made dinette ensemble to be truly premium.



Imagine the pleasure of this 5,100 BTU electric fireplace whenever you want to enjoy a touch of cozy warmth.





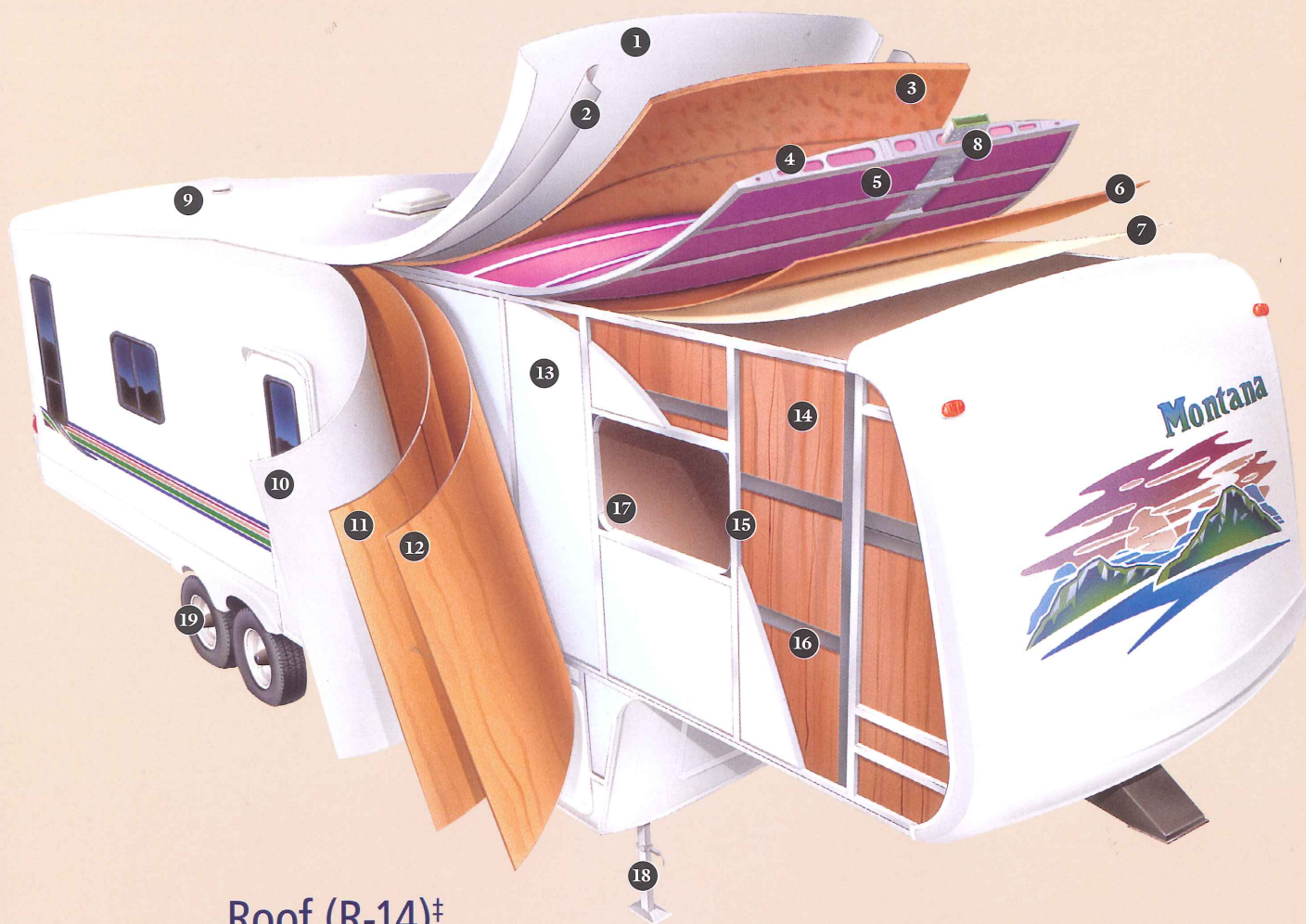
Montana's 3670 RL floor plan is the most open of all our interiors. Shown above in the elegant Spruce décor, the 3670 RL glows with a traditional, yet spacious atmosphere. Extra tall recliners provide you with the perfect place to chat, watch television or take a little snooze.

Convenience.

At Montana, brilliant ergonomics are a trademark to be found literally at every turn. Veteran travelers instantly recognize RV-friendly features such as a computer work station with data port, Freezeguard™ winterizing system, E-Z Lube wheels and a Convection Microwave. An abundance of more subtle conveniences like a cell phone holder with charging station, plate-depth overhead cabinets and a rechargeable flashlight exist to increase your relaxation.

Our designers have also examined every detail to offer maximum storage and utilization of space. Pull-out pantry baskets, a multi-level Lazy Susan, the "Spacemaker" dinette group and a sliding waste container are just a few examples of the ease of use which is synonymous with all Montana fifth wheels.

Construction.



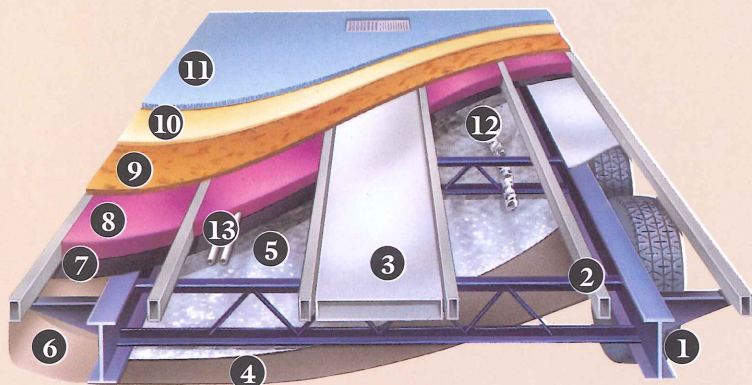
Roof (R-14)[‡]

- | | |
|--|---|
| 1. One-Piece EPDM Rubber Roof Membrane with 12-Year Warranty | 5. Fiberglass Insulation |
| 2. Aluminum Radius Roof Transition Molding | 6. Ceiling Decking |
| 3. 3/8" Roof Decking | 7. Vinyl Ceiling |
| 4. 5" Fabricated Steel Truss Rafters on 16" Centers | 8. Insulated, Foam-Core Air Conditioning Duct |
| | 9. Attic Vent |

[‡] When Equipped with "Arctic Insulation Package"

Sidewalls (R-9)

- | | |
|---|---|
| 10. Gel-Coated Fiberglass | 16. Electro-Galvanized Sheet (EGS) Metal Backing Strips |
| 11. 1/8" Luan Board | 17. Radius Corner Blocks |
| 12. Second Layer 1/8" Luan Board with Seams Staggered | 18. Easy Access Adjustable Snap Jack Pins |
| 13. Solid Block Insulating Foam | 19. Heavy Duty 8-Lug Wheels |
| 14. Interior Decorator Board | |
| 15. 2" Welded Aluminum Wall Studs | |

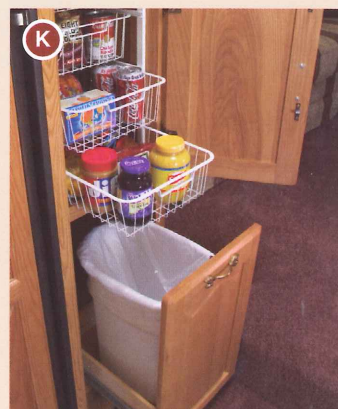
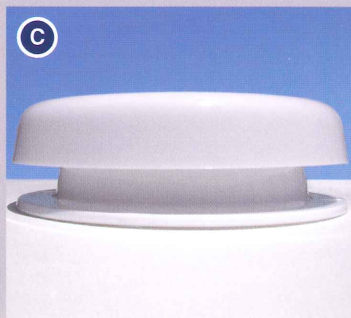
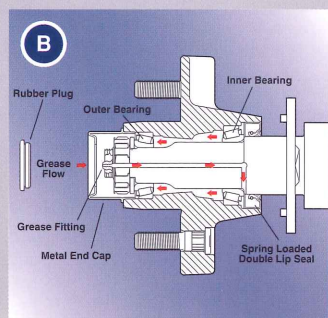


Floor (R-21)[‡]

- | | |
|---|---|
| 1. 10" Steel "Rolled" I-Beam | 9. 5/8" Seamless, Floor Decking |
| 2. 3" Welded Aluminum Floor | 10. Carpet Pad |
| 3. 3" Large-Capacity Heat Duct | 11. Residential-Grade Carpeting with Stain Protectant |
| 4. 1/4" ABS Underbelly | 12. 2" Heat Duct from Furnace into Underbelly |
| 5. Astro-Foil Insulation (97% Heat Reflection) [‡] | 13. Enclosed and Insulated Water Lines |
| 6. Full Radius Wrap Aluminum Enclosure | |
| 7. Moisture Barrier | |
| 8. Fiberglass Insulation | |

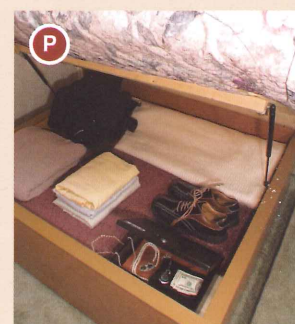
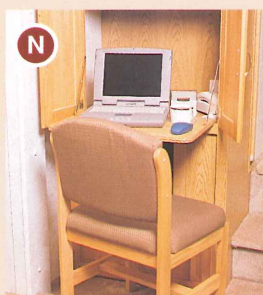
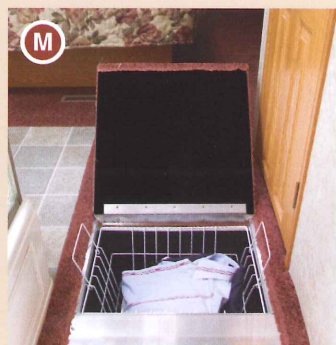
Exterior Details.

- A. You'll provide easy, safe entry for everyone with our low first step and folding handrail.
- B. Easy-lube axles can be lubricated without removing the wheel.
- C. Attic vents provide vital escape routes for unwanted moisture that can accumulate with extended use.
- D. Enclosed sewer dump handles are well protected and add convenience.
- E. Low-point drain shut-offs are enclosed and heated for extended season use.
- F. The detachable marine power cord is safe, easy to use and completely sealed.
- G. Easy-pull snap jacks are mounted toward the front for convenient access.



Interior Details.

- H. Hidden storage is great for keys or jewelry.
- I. Montana's porcelain toilet is a high-rise with a residential size lid.
- J. The strategically placed bedroom lamp casts light downward into your storage areas.
- K. The versatile pantry area has loads of storage potential.
- L. Pull-out pantry baskets are convenient lightweight carriers for your outdoor dining.
- M. The easy access laundry chute transfers dirty laundry to the outside storage area.
- N. Your Montana computer center is built-in, complete with data port.
- O. Montana's Lazy Susan places food items at your fingertips.
- P. Underbed storage area for bulkier, larger items includes a hidden and secured safe.





"Tailgate Compatibility" is another example of Montana's attention to detail that experienced RV'ers are quick to appreciate. No need for a special tailgate; just drop yours down and hitch up your Montana.

Standard Features.

Exterior

- Welded, totally aluminum-framed walls and floor
- 2" laminated, gel-coated Filon exterior walls (R-9)
- 5" fabricated steel truss rafters • Aerodynamic front and rear fiberglass caps • Outstanding exterior pass-thru storage
- Insulated radius baggage doors with inside fasteners
- Radius wrap lower walls • Heated, enclosed holding tanks
- ABS, fully enclosed underbelly • 16" radial tires • Heavy duty 8-lug wheels • Step well for lower first entry step • Seamless, one-piece 5/8" floor decking • Flip-up front storage shelf
- "Wide Stance" front jack legs with adjustable snap jack pins
- In-floor heated and enclosed water lines

Interior

- High-density carpeting and upholstery with fabric protector
- Solid hardwood cabinet doors with cathedral tops
- Entertainment center with TV cabinet • Residential full extension steel drawer glides • 6'3" extra tall slide room with overhead cabinets • (1 or 2) glider/recliner(s) w/footrest
- Decorator jackknife sofa • Computer work station with data port (most models) • Flush floor slide room in living room
- Day/night shades

Kitchen

- Large, 8 cubic foot double door refrigerator • Granite impregnated composite countertop • 1-piece molded kitchen sink with deep bowls • Lighted range hood with fan
- Wide, deep drawers – real wood • Residential-size overhead cabinets • Linoleum kitchen floor, and entryway

Bathroom

- 36" garden tub with glass enclosure (3295, 3400, 3475, 3670, 3685) • Neo-angle shower with glass enclosure (2955, 2980, 3000, 3500, 3650) • Adult height vanity

Montana Fifth Wheel is a product of:



Keystone RV Company

2642 Hackberry Drive Goshen, IN 46526
(574) 535-2100 www.keystone-montana.com

Your Montana Dealer:



- Larger residential-size bath sink • Decorative vanity light
- Residential-style medicine cabinet • Linen shelf with towel hooks
- Foot pedal toilet

Bedroom

- Single level bedroom/bath suite • Quilted bedspread and 2 pillow shams • Residential-sized chest of drawers • TV cabinet with cable and satellite outlets • Deluxe innerspring mattress • "Shoe closet" storage area in wardrobe • Nightstand shelves • Wood window valance with hidden storage

Utilities

- 35,000 BTU furnace • No-fuss, "Freezeguard" winterizing kit
- 10-gallon gas/electric DSI water heater • Systems monitor panel
- 55-amp convertor • 50-amp detachable, marine power cord
- Automatic ignition furnace with in-floor ducting • Phone jack / data port • Cable TV hook-up • Fresh water system – 62 gal.; Grey water – 76 gal.; Black water – 38 gal. • Carbon monoxide detector

Optional Features.

Moving To Montana Package:

- 15,000 BTU A/C with quick cool
- 1/2 Time™ convection microwave • Awning • 25" TV in living area
- Customer Convenience Group:
Easy lube axles / Deep tint windows / Safety glass windows / Vented attic / 12 v. rechargeable flashlight near exit / Cabinet toe kicks / Lazy Susan / Laundry chute to basement / Reading lights over bed / TV antenna and booster High output range with automatic ignitor and 22" oven / Water heater by-pass kit / "Easy-Access" double 30-lb. LP bottles with auto change-over / Oak cell phone holder with charging station 2 kitchen sink-covers

Value Package:

- Fold-away entry/exit handle • Patio scare light: door and roadside • Crank-down stabilizer jacks • Electric front jacks
- Raised-oak refrigerator front • Flush mount range cover
- Roof ladder • DVD/AM/FM receiver with 5.1 surround sound
- Skydome over tub • Shock absorbers • Brinks® hidden safe
- Satellite prep • 19" bedroom TV • Deluxe porcelain toilet upgrade • Black tank flush • Spare tire and carrier

Exterior Options

- Outside shower • Slide-room awning(s) • Aluminum wheels
- Dual pane safety glass windows • Hi-gloss fiberglass

Interior Options

- Spacemaker free-standing dinette w/4 storage chairs
- Neo-angle shower w/glass enclosure IPO garden tub
- King size bed • Full size hide-a-bed sofa • End table and lamp
- Sofa table

Equipment Options

- Second 13,500 BTU A/C • Wire and frame for second A/C
- Ceiling fan • Power vent fan w/rain sensor • Generator prep
- 10 cubic foot double-door refrigerator • Washer/Dryer prep
- Arctic insulation package • Fireplace • Hydraulic selector valves
- Central vacuum

IPO=In Place Of