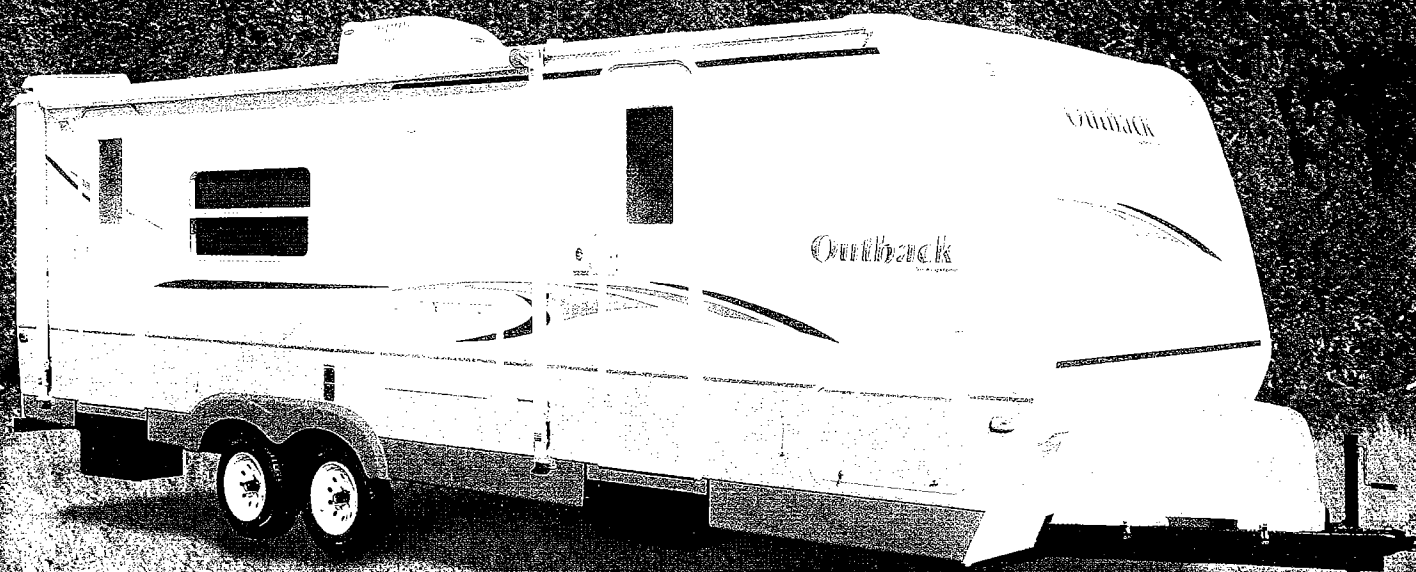


Outback

2006
by Keystone

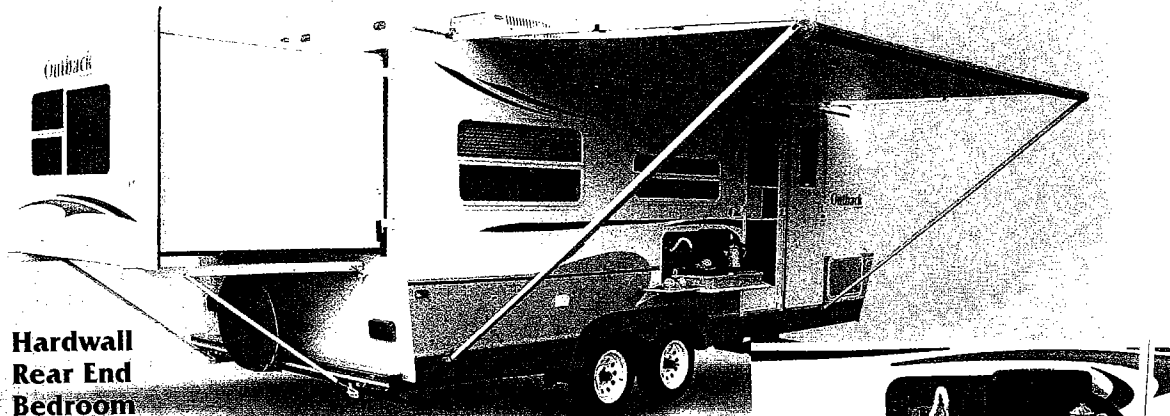
EXTRAORDINARY
TRAVEL TRAILERS



"Built for a Lifetime of RVing"

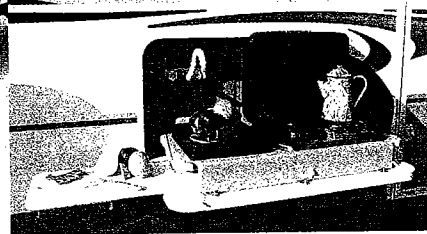
Outback

UNCOMMON DESIGN



Hardwall
Rear End
Bedroom
Slide-out

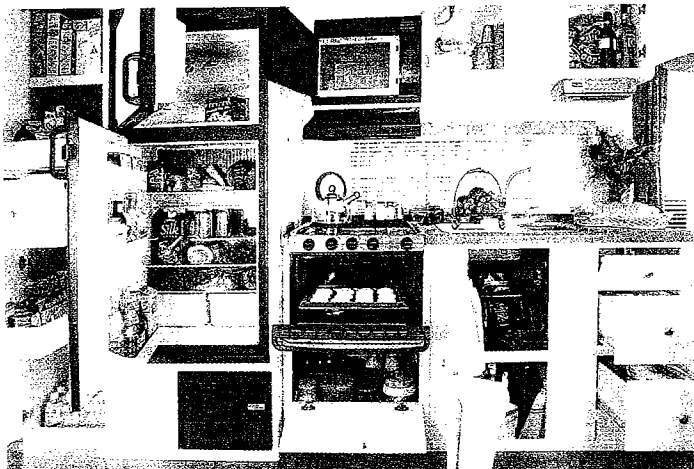
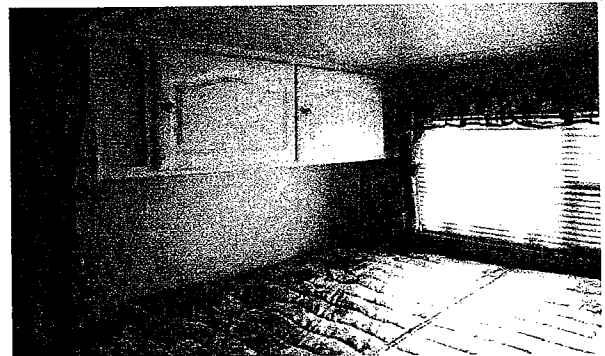
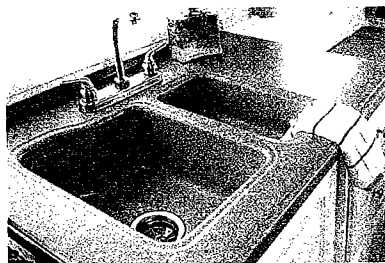
Outside Camp Kitchen!



OUTBACK OPTIONS

- Designer package
- Comfort package
- Pullout pantry (n/a on all models)
- Carbon monoxide detector
- Exterior picnic table
- Tub surround
- Outside camp kitchen
- 14" Spare tire kit
- 6-Gal. gas/elec. DSI water heater
- Oven
- Stabilizer jacks (4)
- 2 Security lights at side

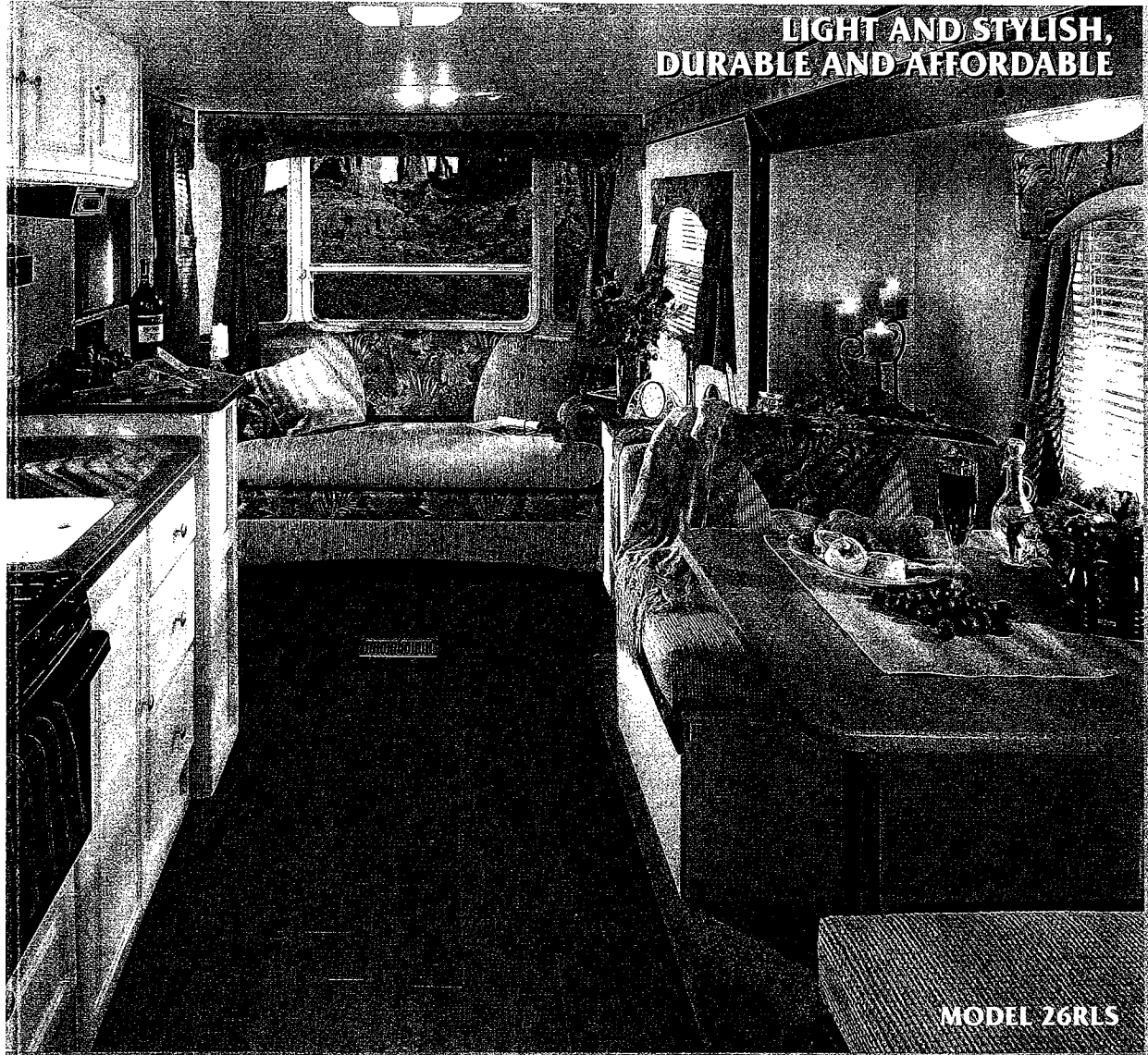
New this year with Outback's fabulous outside camp kitchen is a 20-ft. coil hose you can swap with the sink faucet for outdoor clean-up. The large concealed cutting board slides from side to side, both hot and cold water are accessible, and there's even a towel rack.



Top left, Outbacks' one-piece, granite-look molded acrylic sink/counter top. Top right, the hardwall rear slide-out bedroom adds living space without length when it's time for Outback to take to the road. New for 2006, a bank of cabinets above the queen size bed. Bottom photo shows the amazing amount of storage you'll enjoy in your Outback kitchen.

REMOTE-CONTROLLED HEATING,
AIR-CONDITIONING AND DEHUMIDIFYING
ALLOW YOU TO
MANAGE YOUR ENVIRONMENT

**LIGHT AND STYLISH,
DURABLE AND AFFORDABLE**



MODEL 26RLS

Left photo, Outback's Havana decor, new for 2006, shown here in Model 26RLS. The appeal of the Outback interior revolves around the unusual white raised panel Thermofoil cabinetry. Specially suited for the RVing environment, it is light but remarkably strong and easy to maintain. Contrasting with the cherry wood-plank look flooring, the cabinetry harmonizes with Outback's light-toned furnishings. The complete look offers the same fresh, upscale style found in today's most trend setting homes. The 26RLS also features a comfortable camel-back sofa in front of a panoramic scenic view window. In the front of the model, there is a spacious, carpeted queen bedroom/bathroom suite.

STANDARD INTERIOR FEATURES

Living Area

- Grab handle at entry*
- Hardwood valance (living room)
- Linoleum floor
- Thermofoil residential raised-panel doors with concealed hinges throughout
- Wood side drawers with steel guides
- Water, soil, and stain resistant fabrics
- Molded acrylic galley counter and dinette
- Aluminum framed dinette seats
- Large overhead cabinets

Kitchen

- 60/40 deep molded acrylic sink with 3" drains
- Pullout pantry drawers* (n/a 26RKS and 26RLS)

- Two-door 6 cu.ft. refrigerator
- High-rise faucet
- Flush fitting cutting board
- Monitor panel
- Utensil tray
- Trash can (most models)
- 3 burner range with oven*

Bedroom

- Deluxe innerspring mattress
- TV hook-up
- Residential bedspread
- Deluxe headboard
- Jalousie windows for maximum ventilation

Bathroom

- Power roof vent
- One-piece molded acrylic lavatory sink
- Skylight over tub
- Grab handle at tub
- Porcelain foot flush toilet
- Laundry hamper

- Tub surround*
- Large linen closet (most models)

Appliances

- Two-door 6 cu.ft. refrigerator
- Three-burner range with oven*
- Six gallon gas/electric DSI water heater*
- 30,000 BTU furnace
- 13,500 BTU Remote-controlled A/C with timer*

OUTBACK DESIGNER PACKAGE

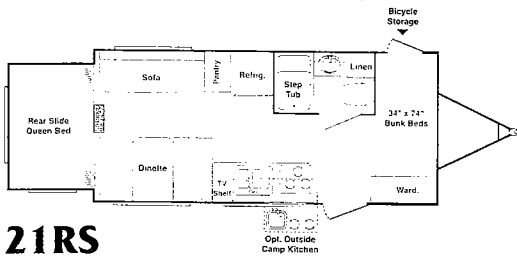
Oval mirror, Wall Border, Cloth Shower Curtain, Laundry Hamper, Bathroom Accessories, Brushed Nickel Coat Hooks, Utensil Rack, Sofa Pillows, Innerspring Mattress, Bedspread, LP/Battery Cover, Chrome Bumper Cover, Catch-All Tray, Raised Panel Refrigerator, Recessed Cutting board, (Approx. Wt. - 300 Lbs.)

OUTBACK COMFORT PACKAGE

TV Antenna/Cable, Microwave, AM/FM/CD Stereo, Awning, 13,500 BTU Ducted A/C with Remote (Approx. Wt. 200 Lbs.)

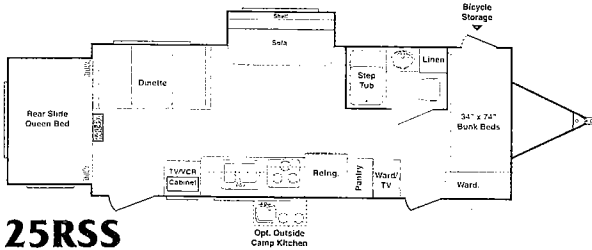
*Optional

2006 Outback Floorplans



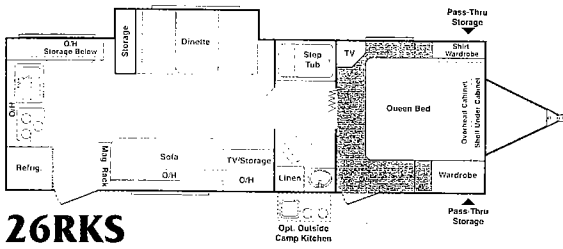
21RS

GVWR Dry Weight Hitch Carrying Cap.
 6000 4300 425 1625
Ext. Height w/AC Exterior Length
 9' 11" 22' 1"



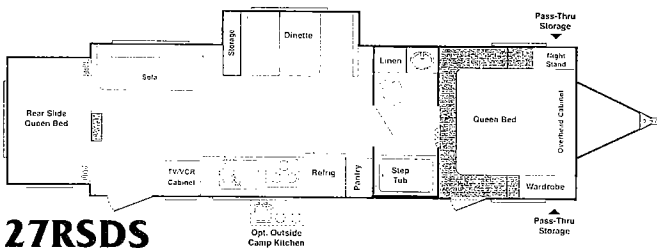
25RSS

GVWR Dry Weight Hitch Carrying Cap.
 6000 4695 440 1305
Ext. Height w/AC Exterior Length
 9' 11" 25' 10"



26RKS

GVWR Dry Weight Hitch Carrying Cap.
 7000 5155 625 1845
Ext. Height w/AC Exterior Length
 9' 11" 28' 9"



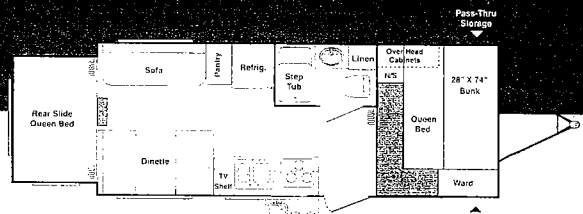
27RSDS

GVWR Dry Weight Hitch Carrying Cap.
 7500 5550 570 1950
Ext. Height w/AC Exterior Length
 10' 1" 29' 7"

OUTBACK TANK CAPACITIES

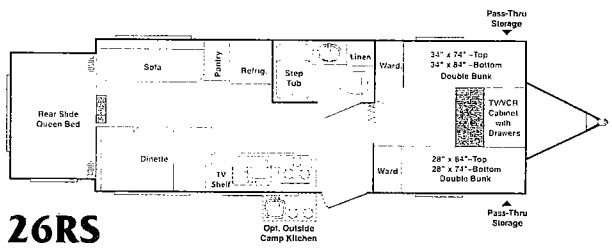
LP Capacity: 60 Lbs.
Water Tanks:
 Fresh.....50 Gal.
 Grey.....40 Gal.
 Waste.....40 Gal.

*Options not included in dry weight; check actual trailer for dry weight with options.



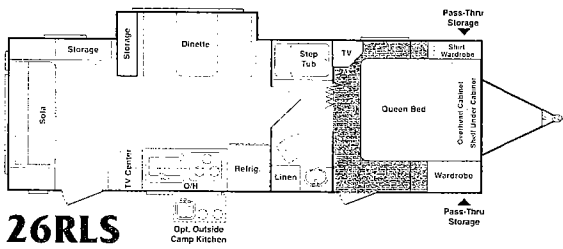
23RS

GVWR Dry Weight Hitch Carrying Cap.
 6000 4715 565 1285
Ext. Height w/AC Exterior Length
 9' 11" 24' 11"



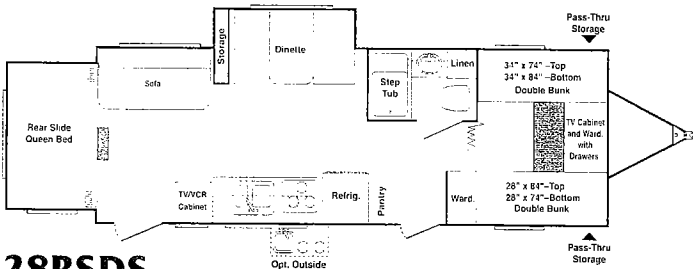
26RS

GVWR Dry Weight Hitch Carrying Cap.
 6000 4905 605 1095
Ext. Height w/AC Exterior Length
 9' 11" 26' 5"



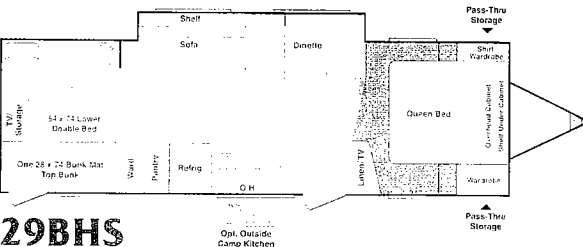
26RLS

GVWR Dry Weight Hitch Carrying Cap.
 7000 5025 770 1975
Ext. Height w/AC Exterior Length
 10' 1" 28' 10"



28RSDS

GVWR Dry Weight Hitch Carrying Cap.
 7500 5630 700 1870
Ext. Height w/AC Exterior Length
 10' 1" 30' 8"



29BHS

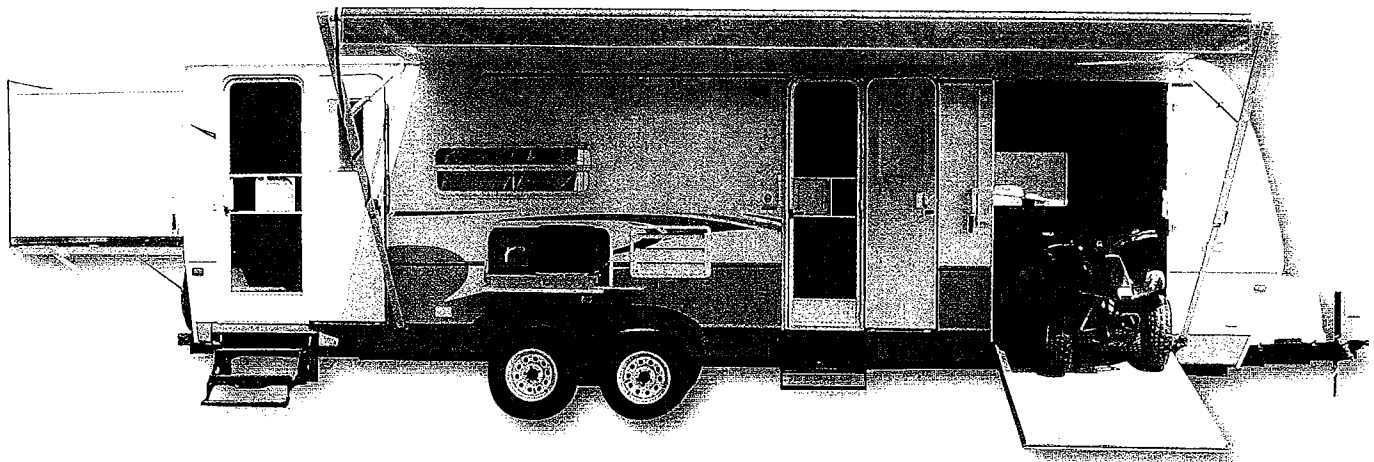
GVWR Dry Weight Hitch Carrying Cap.
 7500 5250 670 2250
Ext. Height w/AC Exterior Length
 10' 1" 30' 8"

**NEW
FOR 2006**

**2 FLOOR PLANS
OFFER 338 CU.-FT.
OF CARGO SPACE!**

**Outback
KARGOROO**
by Keystone

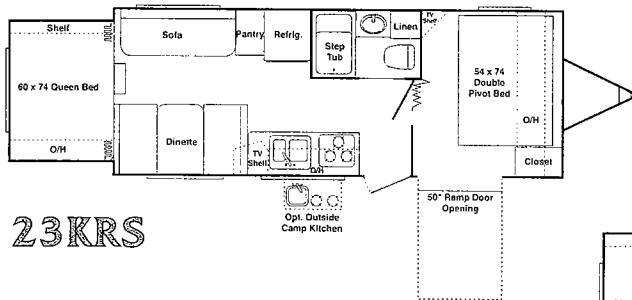
**CARRY WHAT YOU WANT
WITHOUT THE BULK & WEIGHT
OF AN S.U.T.!**



1/2-TON or SUV TOWABLE! LOW-ANGLE SIDE ENTRY RAMP!

New for 2006, the Kargoroo is a special edition of the Outback with the same Outback standard and optional features as all the other models. IN ADDITION, as shown above set up for the campground, the Outback Kargoroo offers a huge cargo space which is actually a separate

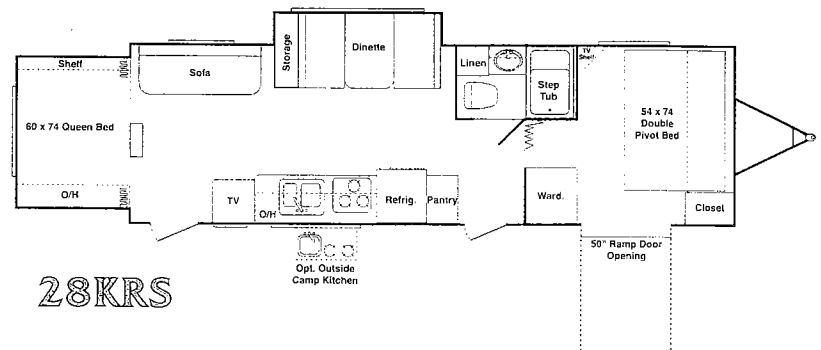
room complete with a hinged aluminum-framed double bed and an accordion door. This versatile 338-cu.ft. cargo area furnishes space for leisure vehicles and sporting equipment of all kinds, barbeque grill, large tools, hobby equipment, wheelchairs, or even a traveling workshop.



23KRS

GVWR Dry Weight Hitch Carrying Cap.
7000 4790 565 2210
Ext. Height w/AC Ext. Length
9' 11" 24' 11"

GVWR Dry Weight Hitch Carrying Cap.
7600 5685 665 1915
Ext. Height w/AC Ext. Length
10' 1" 30' 8"



28KRS

Outback

2006 Travel Trailers

7-Layer Sidewall Construction

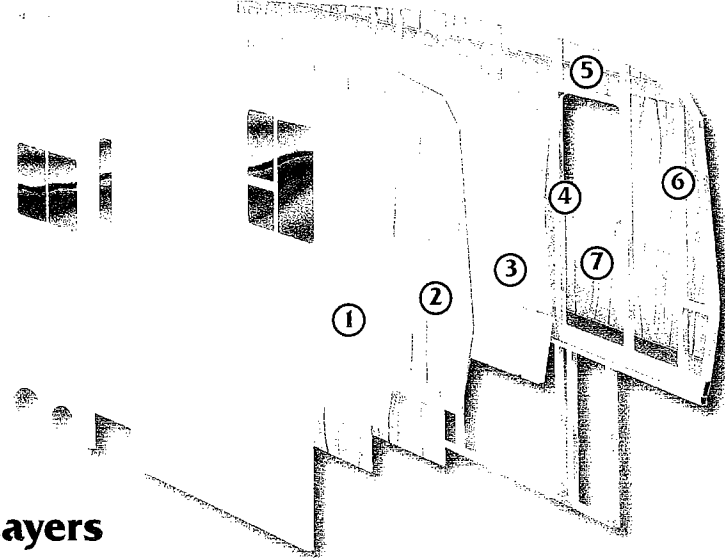
EXTERIOR FEATURES



This handy bike storage area is available in the 21RS, 25RSS and 29BHS Outback models.

- Tinted jalousie safety glass windows
- Extra large baggage doors (1" thick with continuous hinge and rubber D-seal)
- Assist handle at entry
- Radius entry door
- Extended drip caps and full length drip rail
- Two security lights (one each side)*
- Porch light
- Hitch light
- Aluminum bumper cover*
- Weather encapsulated floor line trim
- Exterior 120-volt receptacle
- Heated enclosed underbelly, tanks and valves
- One-piece molded LP tank cover
- Automotive-style fender skirt
- Molded picnic table (n/a on all models)*
- Double welded dual battery brackets

*Optional



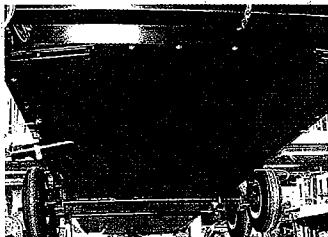
Layers

1. Gel-Coated Fiberglass
2. 1/8" Luan Wood Backer
3. Solid Block EPS (Expanded Polystyrene) Insulation
4. Radius Window Corner Blocks
5. Metal Backing Strips (EGS-Electro-Galvanized Sheet)
6. 2" Welded Aluminum Sidewall Studs
7. Interior Wall

CONSTRUCTION

Walls

- Two-tone exterior fiberglass
- 2" welded aluminum framed side walls and end walls
- Solid block foam insulation



Outback's heated underbelly encloses tanks and valves, helping to extend the camping season. On the road, the smooth underside greatly improves air flow for better towability.

Roof

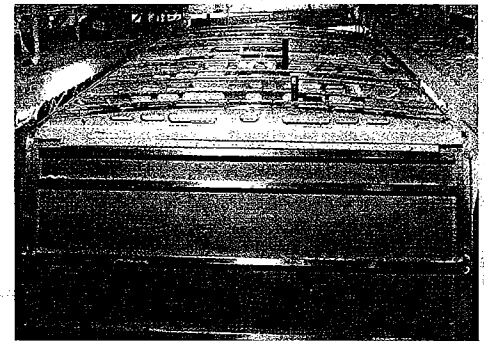
- 5" tapered galvanized steel truss on 16" centers
- Luan roof decking
- One-piece EPDM rubber roof (12 year warranty)
- Blanket insulation

Floor

- 3" welded aluminum floor joist on 13" centers
- 5/8" seamless one-piece floor deck
- Blanket insulation
- Darco wrapped barrier
- Polypropylene enclosed heated underbelly, tank, valves

Chassis

- Leaf spring equalizing suspension system
- 8" powder coated I-beam
- Easy-to-lube axles
- 10" electric brakes
- Full-size welded outriggers
- 6" box steel A-frame, double welded
- 205/75R14 tires



ALL-ALUMINUM FRAME WITH PATENTED, ONE-PIECE GALVANIZED STEEL ROOF TRUSS

Utilities

- 55-amp converter
- 30 lb. LP bottles with auto changeover
- TV antenna with booster, cable TV*
- 30-amp shore power line

*Optional



Safety

- LP leak detector
- Smoke detector
- Carbon monoxide detector*
- Fire extinguisher
- Tinted safety glass windows
- Break away switch
- Safety chains

*Mandatory Option

Outback's aerodynamic exterior design, with its streamlined front cap, radiused corners, and enclosed underbelly, substantially reduces air turbulence, increasing stability during travel.

Outback Travel Trailers

ARE A PRODUCT OF



2642 Hackberry Drive, Goshen, IN 46526
574.535.2100 www.keystone-outback.com

For more information, contact your **Outback** Dealer:



Go RVing
Life's A Trip™