

THE BIGGEST ^{and Baddest} CAT IN TOWN!



Travel Trailers, Park Trailers & Fifth Wheels





Travel Trailers, Park Trailers & Fifth Wheels

Model 26RLSS shown in Julliard Raison



An expanded line of innovative new models makes Puma the biggest cat in town with lots of new features to rival the big dogs in quality and value. Vibrant new fabrics and upgraded window treatments add designer fashion to your leisure living while residential grade Armstrong ToughGuard® linoleum flooring provides

great looking durability. Manufactured to withstand the demands of family living, this tough floor is guaranteed not to rip, tear, gouge, or discolor. Whether you're interested in a travel trailer, park trailer, or fifth wheel, Puma offers the variety and features to please just about everyone.



Lots of interior and exterior storage features enhance the livability of every Puma unit. From handsome cabinetry to under bed storage space to exterior slide-through cargo compartments, you'll have plenty of room to bring along everything you need.





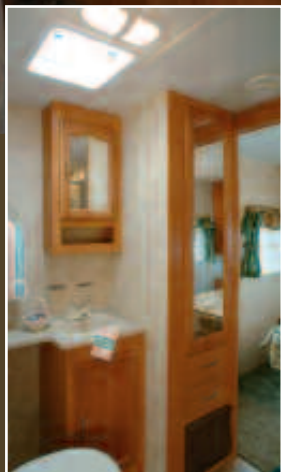
Travel Trailers, Park Trailers & Fifth Wheels

Model 282RKSS shown in Jungle Forest



Prowl through Puma's interior and discover the many easy living features. By carefully utilizing available space, Puma designers have integrated beauty, form, and function to create incredibly spacious floor plans with a full 80 inches of interior height. Flush floor slide-outs in most models add even more living space.

The slide-out framing is enhanced with an attractive wood fascia that adds an elegant touch of style along with rich cathedral style cabinets with polished nickel finish hardware. Fully equipped kitchens feature residential style appliances and quality countertops for high-end appeal.



The bed and bath area promises a good night's rest and the comfort of convenience. The quality innerspring queen size mattress provides sleeping comfort while an abundance of wardrobe space gives you plenty of room for storage. The roomy bath area is furnished with everything to meet your needs.



Travel Trailers, Park Trailers & Fifth Wheels

Model 26RLSS shown in Reflex Baltic



Quality furnishings add beauty as well as value. Sit a spell and enjoy the comfort of the finely crafted furniture manufactured by Seating Technology. The plush 21-ounce solid color, trackless carpet is finished with plied heat set polypropylene and ActionBac™. Puma offers a choice of four different color decors to please your individual sense of style. (Julliard Raison-Plum, Jungle Forest-Green, Reflex Baltic-Blue, and Just Mahogany-Tan)





Travel Trailers, Park Trailers & Fifth Wheels

Model 282RKSS shown in Just Mahogany



The large variety of floor plans and models ensures your satisfaction. Regardless of your lifestyle or family size, we've got the unit that perfectly fits your needs, desires and tastes. Even though every unit is loaded with a long list of standard features, Puma also offers many optional



choices to enhance your selection. Most importantly, Puma's superior construction with high-grade building components gives you lasting value for years of traveling pleasure.



Standards & Options

EXTERIOR FEATURES

.024-Gauge Mesa Aluminum Exterior
Clamp Ring Windows
Double Entry Doors (where applicable)
Pass-Thru Storage (where applicable)
Rubber Roof - 12 Year Manufacturer's Warranty
E-Z Open Double Entry Steps
Rain Gutters
R7-Fiberglass Insulation (all 6 sides)
4-1/2" Crowned Truss Rafters
Automotive Style Fender Skirts
Radius Trunk Doors
Wrapped Darco Underbelly
One Piece, 24' Sheet, 5/8" Floor Decking (25 Year Manufacturer's Warranty by Affiliated Resources, Inc.)
2 x 3 Flush Joists on 12" Centers
Lighted Pass-Thru Exterior Compartments (where applicable)
2-20 lb. Gas Bottles
6 Gal. DSI Hot Water Heater
Rack and Pinion Electric Slide System with manual override (standard on all slideout models)
High End Exterior Graphics
Extra Color Band Metal on the Bottom Sidewall
Heavy Duty Storage Door for the Puma Den Option
Rear Garage Storage
Compartment (standard on the 27FQ, 28BHS, 30RDSS and 259RGSS)

INTERIOR FEATURES

Seating Technology Furniture
80" Interior Height
Insulated Duct A/C (all models)
Floor Ducted Heat
Flush Floor Slide-Outs
Real Wood Drawers

Plant Built Wood Medicine Cabinet with Mirrored Door
60/40 Deep Double Bowl Kitchen Sink
High Rise Kitchen Faucet
Cathedral Mortise and Tenon Cabinet Doors
Suburban 3-Burner, High Output Range
Knife Rack
Upgrade Window Treatment
55 Amp Converter with Battery Charger
Flip Down Utensil Tray (kitchen)
Innerspring Mattress
Bedroom Carpet
1 Sink Cover
Single Door Refer
Power Vent in Bath
12V Shower Light
4 Interior Colors
Polished Nickel Finish Cabinet Hardware, Light and Bath Fixtures
Cabinet Doors under Dinette Seats
Upgraded Carpet (21 oz.)
Upgraded Residential Armstrong ToughGuard® Linoleum
High End Looking Counter Tops
Color Coordinated Sink
Full Length Wardrobe and Shirt Closet in Front Bedrooms (Travel Trailer only)

STANDARD SAFETY FEATURES

CO₂ Detector
LP Leak Detector
Fire Extinguisher
Smoke Detector

TRAVEL TRAILER OPTIONS

Water Purifier
Sink Cover
Range Cover
Galley Extension
Double Door Refer
6 Gal. Gas/Electric DSI Hot Water Heater

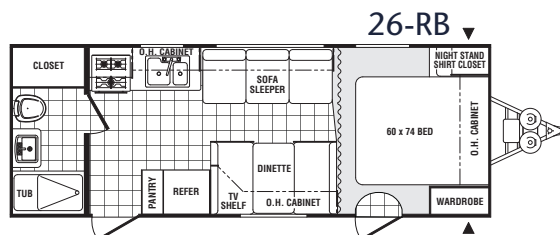
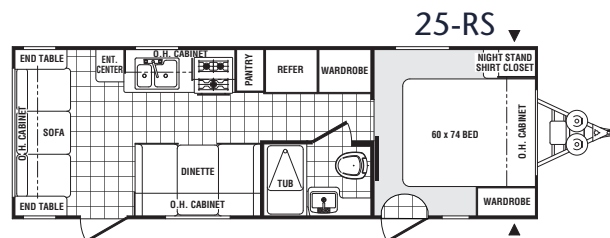
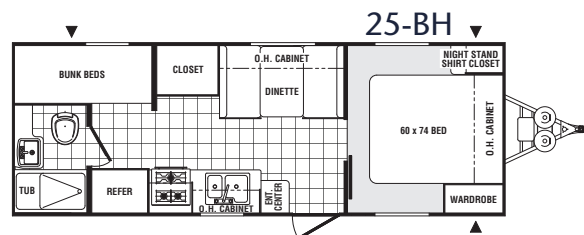
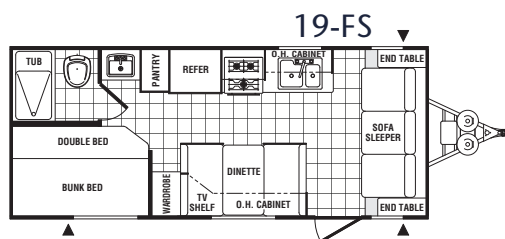
Water Heater By-Pass (forced option)
21" Oven
Microwave
Create-a-Breeze Fan (exchange)
AM/FM CD Stereo
TV Antenna with Booster and Cable Hook-Up
Bedroom TV Hook-Up (NA 19FS)
Extra Roof Vent
13,500 BTU Ducted A/C
15,000 BTU Ducted A/C
Bedsread
Outside Grill
Tub Surround
Mini Blinds
Wall Border
Front Window with Rockguard
Awning
2 Stabilizer Jacks
4 Stabilizer Jacks
Outside Shower
Tinted Safety Glass
Diamond Plate
30 lb. Gas Bottles and Cover
Spare Tire and Carrier
AM/FM CD DVD Home Theater Surround Sound System
Double Bed Spread and Bunk Spread*
PUMA Den*
Swivel Rocker*
Bath Skylights
Free Standing Dinettes*
Overhead Cabinets in Slide Room*
Hide-A-Bed Sofa*
Glass Shower Door*
Roof Ladder
Heated Tanks
J-Lounge Sofa (29RKSS only)
Interior Decors-Reflex Baltic, Jungle Forest, Julliard Raisin and Just Mahogany
Puma Premier Package-
See back cover for details

FIFTH WHEEL OPTIONS

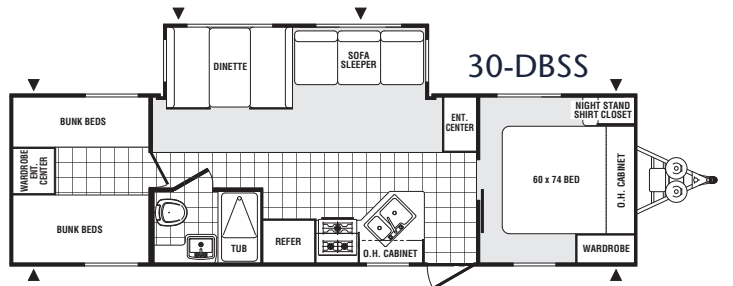
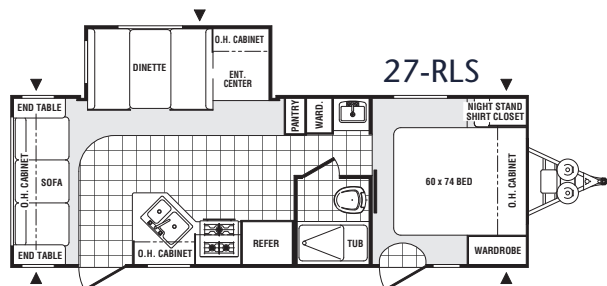
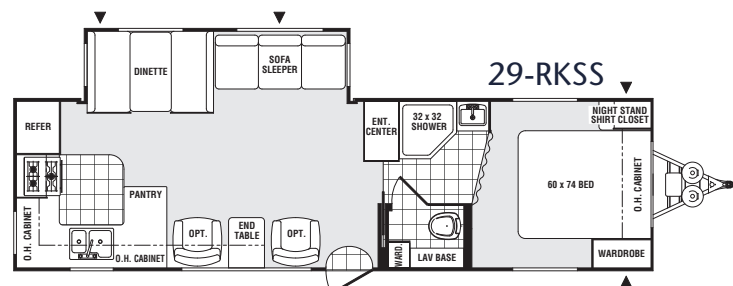
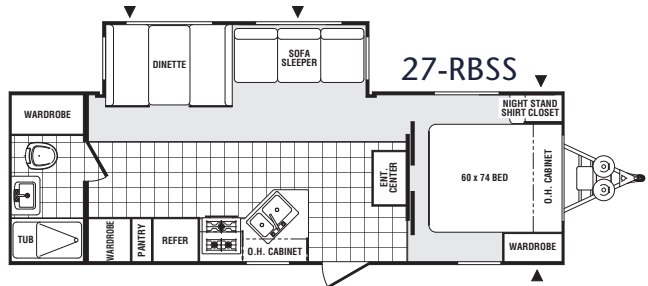
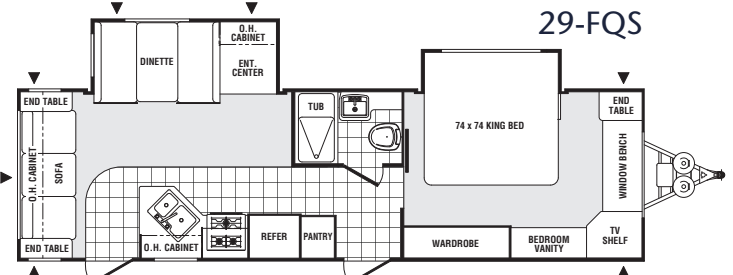
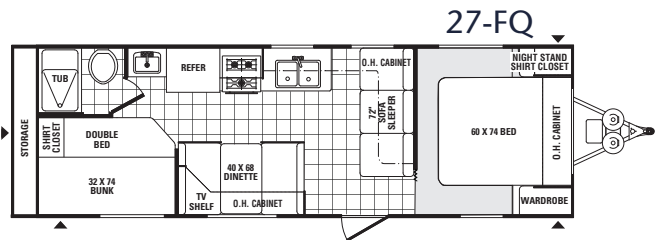
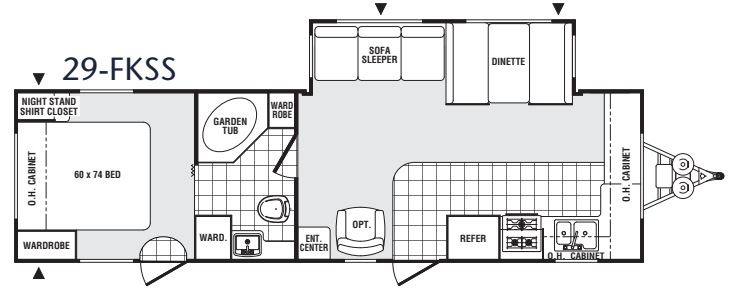
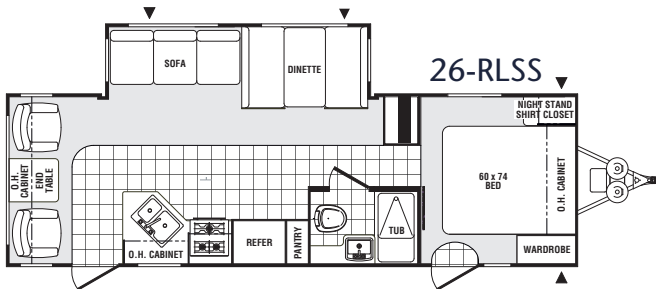
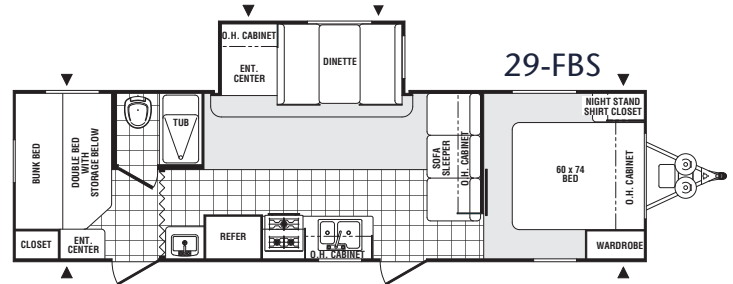
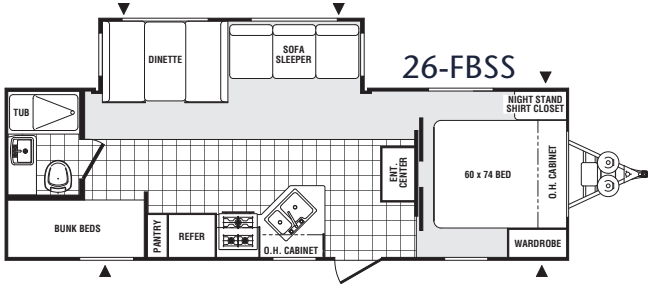
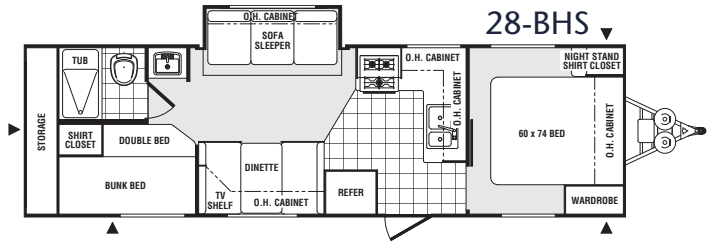
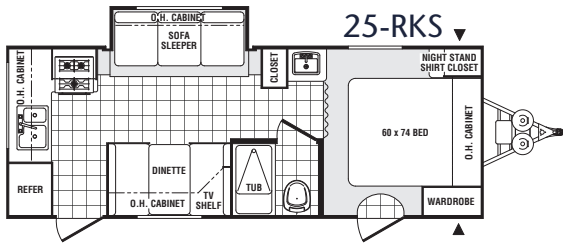
Water Purifier
Sink Cover
Range Cover
Galley Extension
Double Door Refer
6 Gal. Gas/Electric DSI Hot Water Heater
Water Heater By-Pass (forced option)
Oven
Microwave
Create-a-Breeze Fan (exchange)
AM/FM CD Stereo
TV Antenna with Booster and Cable Hook-Up
Bedroom TV Hook-Up
Extra Roof Vent
13,500 BTU Ducted A/C
15,000 BTU Ducted A/C
Bedsread
Tub Surround
Mini Blinds
Wall Border
Swivel Rockers*
Outside Grill
Awning
2 Stabilizer Jacks
Outside Shower
Tinted Safety Glass
Power Front Jacks
30 lb. Gas Bottles
Spare Tire and Carrier
AM/FM CD DVD Home Theater Surround Sound System
PUMA Den*
Bath Skylights
Free Standing Dinettes*
Overhead Cabinets in Slide Room*
Hide-A-Bed Sofa*
Glass Shower Door*
Roof Ladder
Heated Tanks
"J" Lounge Sofa (282RKSS only)
Interior Decors-Reflex Baltic, Jungle Forest, Julliard Raisin and Just Mahogany
Puma Premier Package-
See back cover for details

*Available on select models

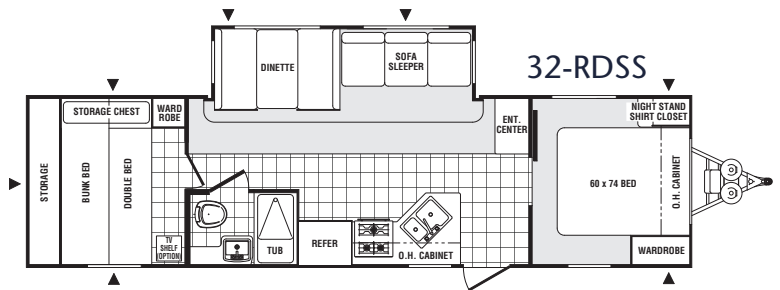
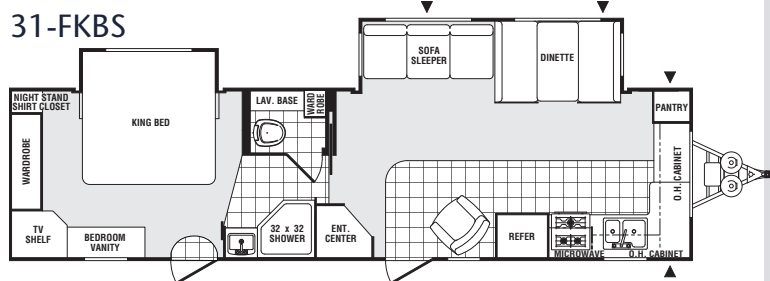
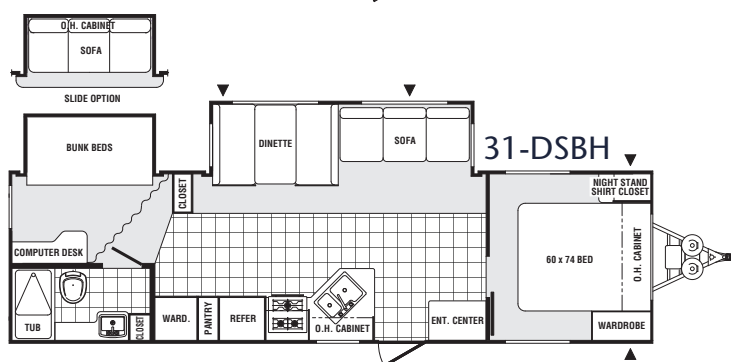
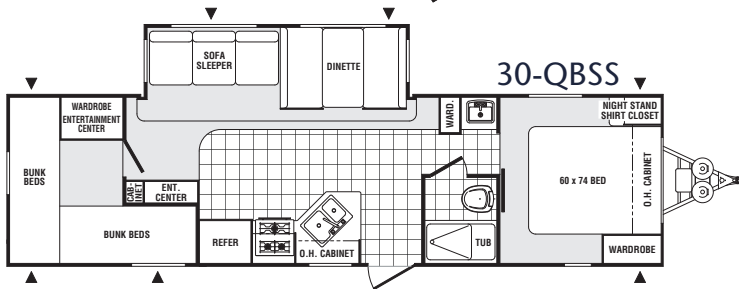
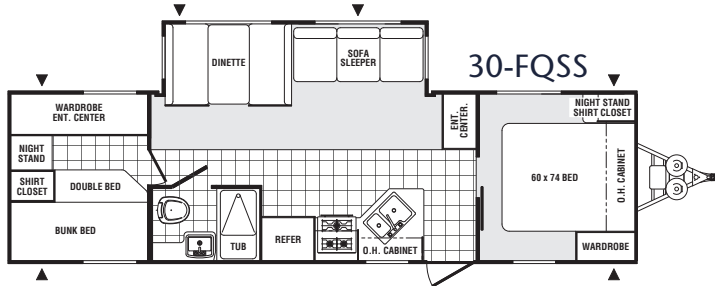
Travel Trailer Floor Plans



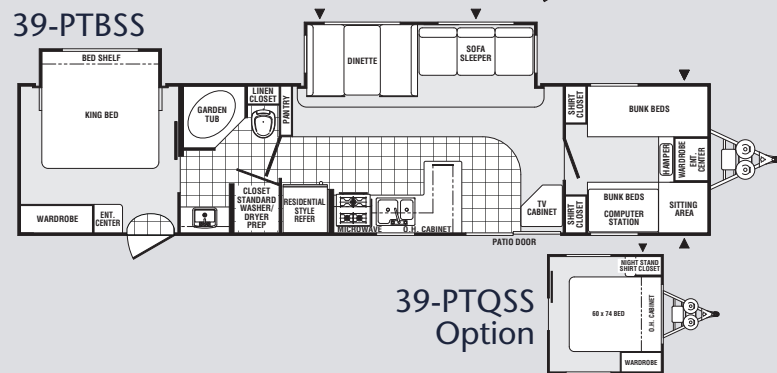
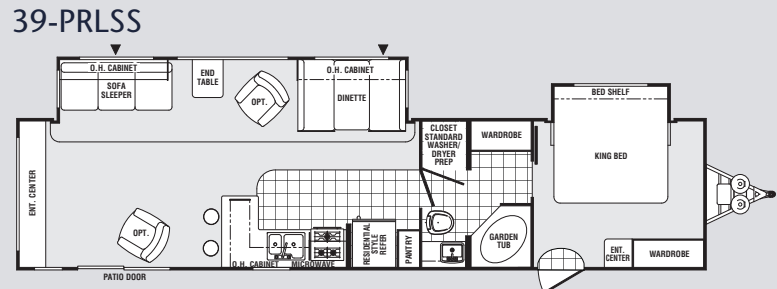
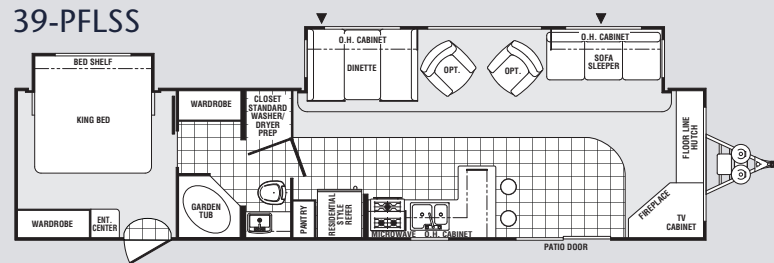
Travel Trailer Floor Plans



Travel Trailer Floor Plans



Park Model Floor Plans



39-PTQSS
Option

Travel Trailers

Models	19-FS	25-BH	25-RS	26-RB	25-RKS	26-FBSS	26-RLSS	27-FQ	27-RBSS	27-RLS	28-BHS	29-FBS	29-FKSS	29-FQS
Hitch Dry Weight	560 lbs.	660 lbs.	600 lbs.	580 lbs.	570 lbs.	705 lbs.	700 lbs.	530 lbs.	*	590 lbs.	640 lbs.	910 lbs.	800 lbs.	720 lbs.
Dry Axle Weight	3710 lbs.	4090 lbs.	4430 lbs.	4700 lbs.	4520 lbs.	5460 lbs.	5470 lbs.	4820 lbs.	*	5090 lbs.	5260 lbs.	5635 lbs.	5910 lbs.	6260 lbs.
Total Dry Weight	4270 lbs.	4750 lbs.	5030 lbs.	5200 lbs.	5090 lbs.	6165 lbs.	6170 lbs.	5350 lbs.	*	5680 lbs.	5900 lbs.	6545 lbs.	6710 lbs.	6980 lbs.
Carrying Capacity	2827 lbs.	2447 lbs.	2107 lbs.	2520 lbs.	2017 lbs.	2877 lbs.	2867 lbs.	1717 lbs.	*	1447 lbs.	1277 lbs.	2702 lbs.	2427 lbs.	2077 lbs.
GVWR	7560 lbs.	7660 lbs.	7600 lbs.	7720 lbs.	7570 lbs.	9505 lbs.	9500 lbs.	7530 lbs.	*	7590 lbs.	7640 lbs.	9710 lbs.	9600 lbs.	9520 lbs.
Tire Size	14"	14"	14"	14"	14"	15"	15"	15"	15"	15"	15"	15"	15"	15"
Interior Height	80"	80"	80"	80"	80"	80"	80"	80"	80"	80"	80"	80"	80"	80"
Exterior Height w/AC	10'5"	10'5"	10'5"	10'5"	10'5"	11'1"	11'1"	10'5"	10'5"	10'5"	10'5"	11'1"	11'1"	11'1"
Exterior Width	98"	98"	98"	98"	98"	98"	98"	98"	98"	98"	98"	98"	98"	98"
Overall Length	22'10"	25'4"	28'4"	27'0"	25'9"	29'10"	28'6"	29'8"	29'6"	27'8"	29'8"	33'0"	32'6"	32'11"
Fresh Water Capacity	45 gal.	45 gal.	45 gal.	45 gal.	45 gal.	45 gal.	45 gal.	45 gal.	45 gal.	45 gal.	45 gal.	45 gal.	45 gal.	45 gal.
Grey Water Capacity	32 gal.	32 gal.	32 gal.	32 gal.	64 gal.	32 gal.	64 gal.	32 gal.	64 gal.	64 gal.	32 gal.	32 gal.	64 gal.	32 gal.
Black Water Capacity	32 gal.	32 gal.	32 gal.	32 gal.	32 gal.	32 gal.	32 gal.	32 gal.	32 gal.	32 gal.	32 gal.	32 gal.	32 gal.	32 gal.

Travel Trailers

Models	29-RKSS	30-DBSS	30-FQSS	30-QBSS	31-DSBH	31-FKBS	32-RDSS
Hitch Dry Weight	830 lbs.	800 lbs.	800 lbs.	*	980 lbs.	*	930 lbs.
Dry Axle Weight	6100 lbs.	5870 lbs.	5870 lbs.	*	6000 lbs.	*	5250 lbs.
Total Dry Weight	6930 lbs.	6670 lbs.	6670 lbs.	*	6980 lbs.	*	6167 lbs.
Carrying Capacity	2237 lbs.	2467 lbs.	2467 lbs.	*	3697 lbs.	*	3994 lbs.
GVWR	9630 lbs.	9600 lbs.	9600 lbs.	*	11140 lbs.	*	11090 lbs.
Tire Size	15"	15"	15"	15"	15"	15"	15"
Interior Height	80"	80"	80"	80"	80"	80"	80"
Exterior Height w/AC	11'1"	11'1"	11'1"	11'1"	11'1"	11'1"	11'1"
Exterior Width	98"	98"	98"	98"	98"	98"	98"
Overall Length	33'4"	32'4"	32'3"	34'3"	33'5"	35'2"	35'0"
Fresh Water Capacity	45 gal.	45 gal.	45 gal.	45 gal.	45 gal.	45 gal.	45 gal.
Grey Water Capacity	64 gal.	32 gal.	32 gal.	64 gal.	64 gal.	64 gal.	32 gal.
Black Water Capacity	32 gal.	32 gal.	32 gal.	32 gal.	32 gal.	32 gal.	32 gal.

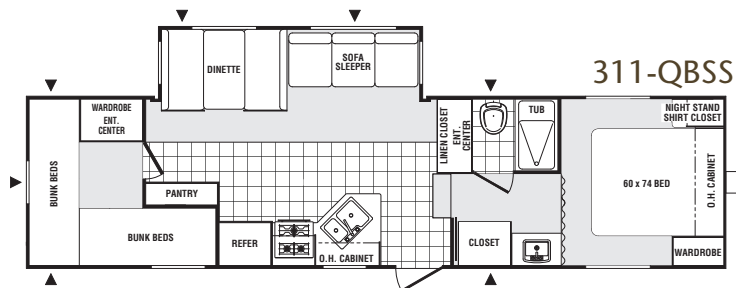
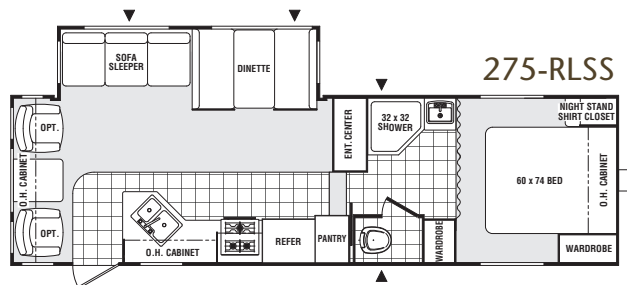
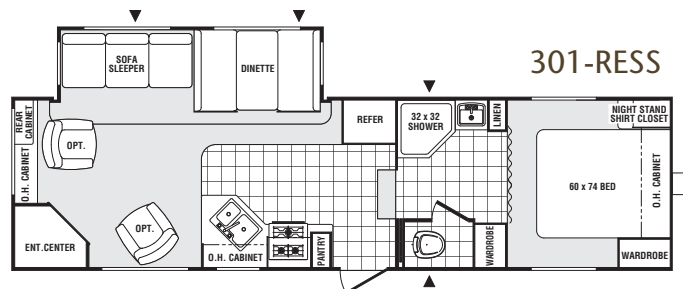
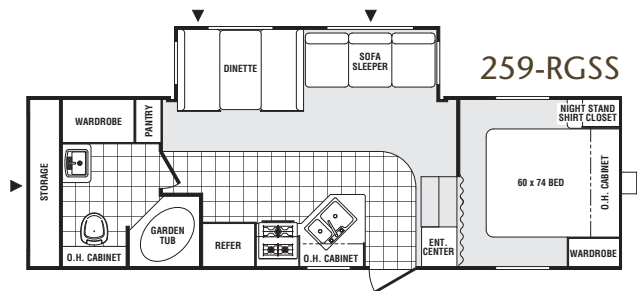
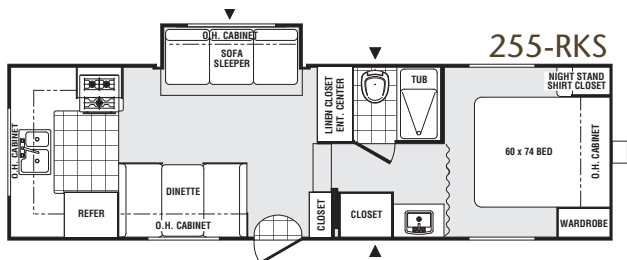
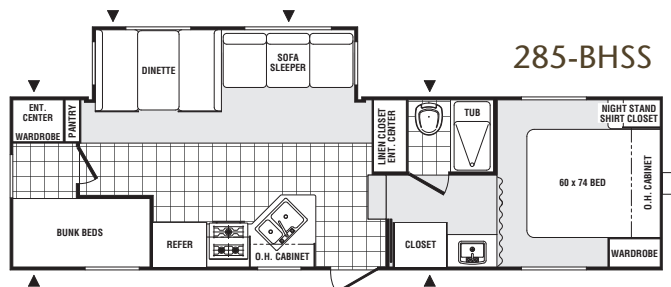
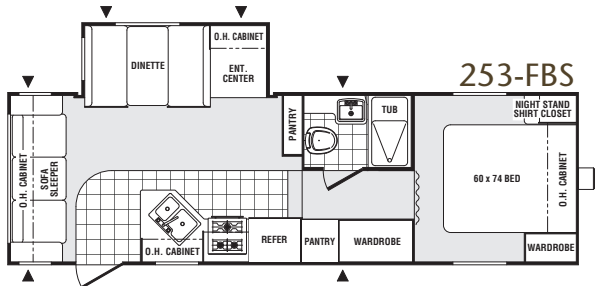
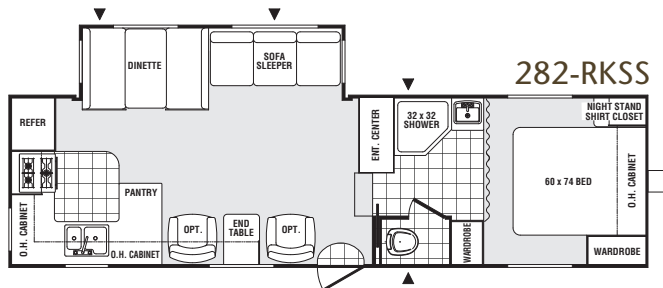
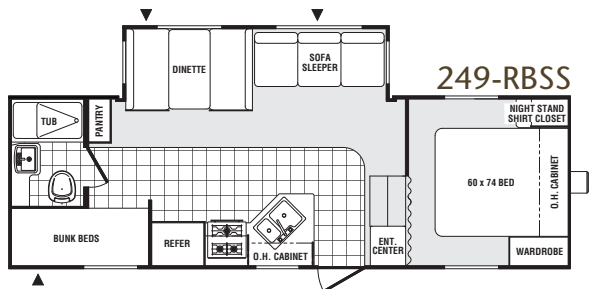
*N/A at time of publication

Park Trailers

Models	39-PFLSS	39-PRLSS	39-PTBSS
Hitch Dry Weight	1150	*	800
Dry Axle Weight	8280	*	9230
Total Dry Weight	9430	*	10030
Carrying Capacity	1417	*	467
GVWR	11300	11700	10960
Tire Size	15"	15"	15"
Interior Height	84"	84"	84"
Exterior Height w/AC	11'9"	11'9"	11'9"
Exterior Width	96"	96"	96"
Overall Length	40'3"	40'3"	40'3"
Fresh Water Capacity	45 gal.	45 gal.	45 gal.
Grey Water Capacity	64 gal.	64 gal.	64 gal.
Black Water Capacity	32 gal.	32 gal.	32 gal.

*N/A at time of publication

Fifth Wheel Floor Plans



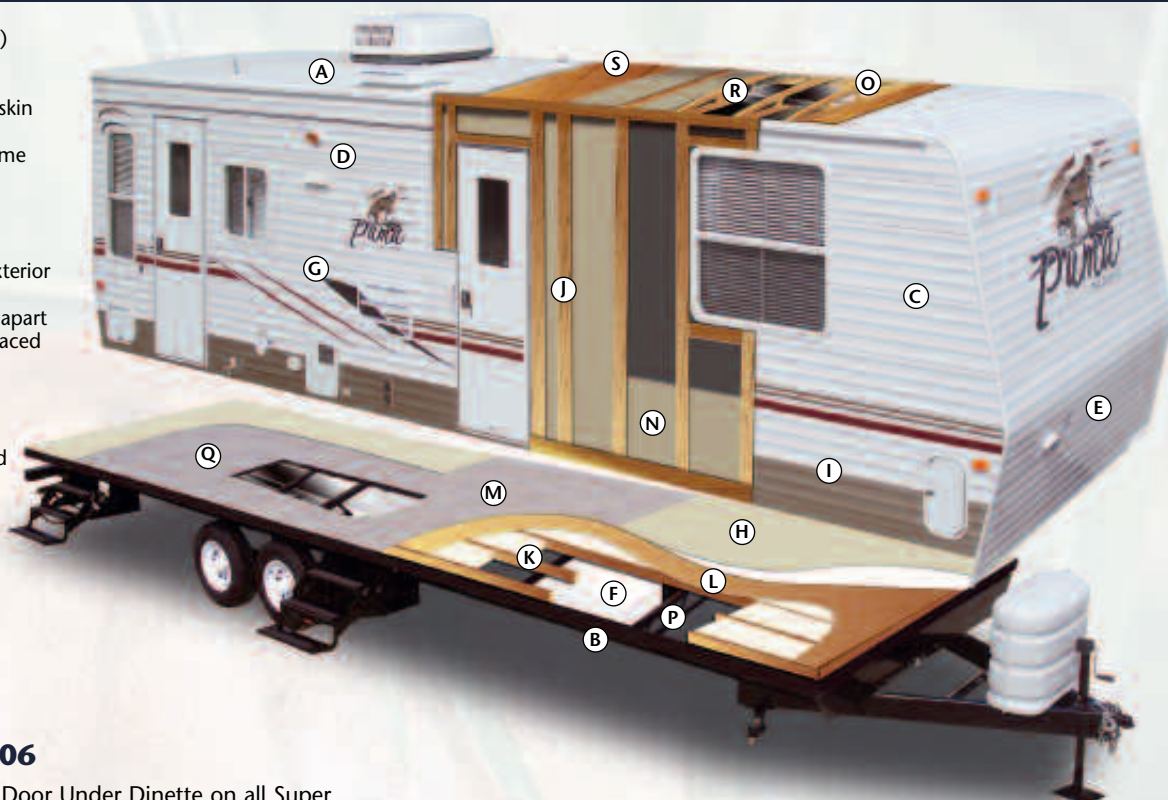
Fifth Wheels

[illegible]

*N/A at time of publication

Construction & Features

- A. Rubber roof (12 year warranty)
- B. Rugged, powder coated steel I-beam frame
- C. Sturdy .024 gauge aluminum skin
- D. Exterior amber lens patio light
- E. Exterior hitch light for night-time hook up
- F. 45 gallon fresh water tank
- G. Bold exterior graphics
- H. Residential grade carpet
- I. Color band metal enhances exterior looks
- J. Sidewall studding spaced 16" apart
- K. Longitudinal floor studding spaced 12" apart
- L. 5/8" DynaSpan™
- M. New Armstrong ToughGuard® linoleum flooring throughout
- N. R7 fiberglass insulation cut and glued between sidewall studs
- O. 4-1/2" crowned truss roof rafters
- P. Steel crossmembers for added support
- Q. Floor ducted heat
- R. Insulated wrapped ducted air conditioning runs
- S. 3/8" Roof decking



New Features for 2006

- Additional Exterior Baggage Door Under Dinette on all Super Slide Models
- All New Fabrics - Reflex Baltic (Blue), Jungle Forest (Green), Julliard Raisin (Plum) and Just Mahogany (Tan)
- New Upgraded Curtains on all Models
- New Residential Armstrong ToughGuard® Linoleum Flooring
- Upgraded Wood Facia Slide-Out Framing
- Sofa w/OHC IPO Bunks in 31DSBH (Optional)
- King Bed Standard in Front Bedroom for the 29FQS
- Raised Bunks on 31DSBH Allowing for Four Full Drawers Beneath



Dinette Under Seat Storage Access



Pass-Thru Storage



Rear Storage (Standard on 27FQ, 28BHS, 30RDS, 259RGSS)



Puma Den Door (Optional)

New Puma Premier Package!

Radius Entry Door
 Folding Grab Handle
 Raised Panel Cabinet Doors (Eye Level Living Room and Kitchen)
 Lambrequin Window Treatments
 Overhead Cabinets in Super Slide Models
 Day/Night Window Shades
 Bi-Fold Doors In Place of Curtains (Where Applicable)
 Dark Tinted Safety Glass
 Upgraded Front Cap (Fifth Wheels)
 AM/FM CD DVD Home Theater Surround Sound System
 6 Panel Interior Passage Doors
 Color Band Metal at the Top of the Coach
 Diamond Plate Standard (Travel Trailers)
 High End Metal Rear Bumper Cover
 Chrome Trim Rings and Hubs on the Wheels
 Frosted Light Above Sofa in Super Slides
 Throw Pillows for the Sofa
 Roof Ladder
 Special Puma Premier Package Decal

Available in all Models!!

DEALER



**Puma Division
 Forest River, Inc.**

31450 M-86 West
 Colon, MI 49040
 Phone: (269) 432-3271
www.palominorv.com

All illustrations and specifications contained in this literature are based on the latest product information at time of publication. Forest River, Inc. reserves the right to make changes in prices, colors, materials, equipment and specifications at anytime without notice and assumes no responsibility for any error in this literature. All weights shown are approximate. All units are shipped F.O.B. Goshen, Indiana. CONSULT YOUR LOCAL DEALER FOR WARRANTY INFORMATION.