

TRAVEL TRAILERS & FIFTH WHEELS

DENALI

DENALI



Let Your Journey Begin.



Refreshing Style. Unrivalled Features. Your Best Value.

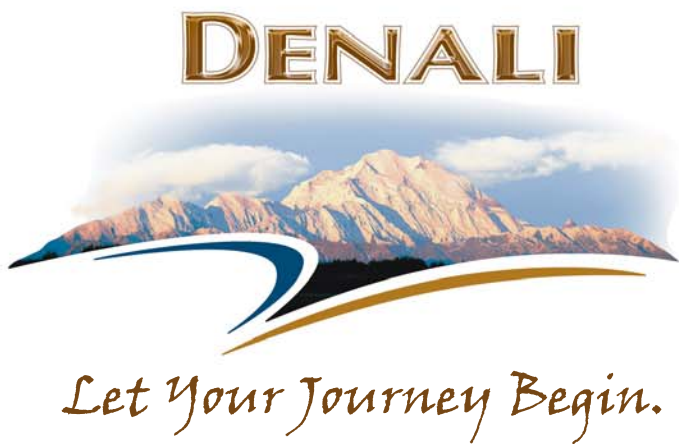
The native people of the great Alaskan wilderness call the massive peak of Mount McKinley "Denali". Translated, Denali means "Great One".

Denali is also the name of the immense national park and nature preserve containing Mt. McKinley. At 6,000,000 acres, Denali National Park exemplifies Alaska's character as one of the world's last great frontiers for wilderness and adventure. It remains an untouched terrain of wildlife and glaciated mountains.

The grandeur and beauty of Denali National Park has inspired Denali laminated travel trailers and fifth wheels. Denali will captivate your senses and deliver first-class features and comfort with unprecedented value.



31RG-M5 in Nirvelli Spice



DENALI - Offering More Standard Features

BETTER FEATURES - BETTER

Weather Guard Premium Protection Package

R14 Roof Structure

- 5" Truss roof with fiberglass insulation
- Two layers of R7 insulation
- 3/8" OSB walk-on roof deck
- One-piece rubber roof
- Insulated air conditioning duct

WEATHER GUARD

Enclosed/Heated Floor Structure

- 3" Floor structure with R7 insulation layer
- Enclosed tanks with three-layer laminated, insulated underbelly
- Radiant heat & heat duct to underbelly
- Frame rails lined with Poly Air insulation

STANDARD



More Standard Convenience Items



Quick-drain tanks with 1.5" gate valve



Spare tire



Black tank flush



EZ lube hubs

STANDARD



Entertainment Package



LCD Flat screen TV with built-in DVD player
Jensen AM/FM/CD player

4 Ceiling-mounted interior speakers



2 Exterior marine-grade speakers



STANDARD



Hitch Helper® King Pin Cover



Denali's exclusive "Hitch Helper" makes hooking up your fifth wheel a breeze. Simply use your rear view mirror and the mirror on the Hitch Helper to locate your fifth wheel hitch. It's easy to use!



STANDARD



Features & Value Than The Competition

CONSTRUCTION - BEST VALUE

Thule Smart RV Pods

The Thule Smart RV system uses a number of factory-installed anchor pods mounted on the exterior of the trailer. The optional accessories mount to the pods in seconds using Thule's quick-release latch system. (Accessories optional)



STANDARD



Residential Interior Features

Solid wood slide fascia
Large, dark-tint windows
Residential hide-a-bed sofa

STANDARD



More Standard Features



8.0 cu.ft. Extra large refrigerator



10 Gallon DSI hot water heater

*Optional feature on travel trailers

STANDARD



Full Fiberglass Front Cap

The cap features integrated "area lights." The area lights are on a dimmer switch that allows you to illuminate your campsite at night for added security.

STANDARD



Premium Construction Highlights

- 2" Thick, aluminum-framed, laminated, high-gloss fiberglass walls
- Fully decked 3/8" walk-on roof
- 5" Tapered truss roof rafters with R14 insulation
- Cambered steel I-beam frame with outriggers
- Triple fold-away steps welded to frame
- 3" Thick floor structure with one-piece 5/8" 5-ply tongue-and-groove, exterior-grade floor decking
- Weather Guard Premium Protection Package
- Dark-tint, radius corner windows
- Ultra-lube hubs - grease zerk make wheel bearings easy to lube
- All tanks mounted in frame - saves valuable interior space



STANDARD

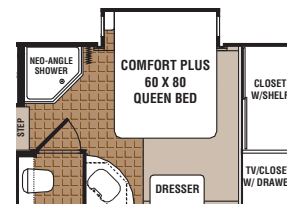


[illegible]

Floor plan of the second floor. The plan includes a central hallway with a 'FLUSH FLOOR SLIDEOUT' area. To the left is a 'REFER' (refrigerator) and a 'PANTRY' area. To the right is a 'QUEEN BED' and a 'CLOSET W/DRAWER'. The plan also includes a 'DINETTE PLUS', 'OHC' (overhead cabinet), 'HIDE-A-BED SOFA', 'ENL. CENTER' (enlarged center), 'NEO-ANGLE SHOWER', and 'S/C' (sink/cabinet). There are also 'OHC' labels for the kitchen and bedroom areas.

The floor plan for the 2014 Jayco Jay-Fly 28 shows a front dinette with a table and chairs, a kitchen area with a counter, sink, and refrigerator, a bathroom with a toilet and shower, and a sleeping area with a queen bed. Storage areas include a closet and a wardrobe.

These fifth wheel
floorplans are
available with a
Queen Bed Slide Suite!



10th Floor Plan:

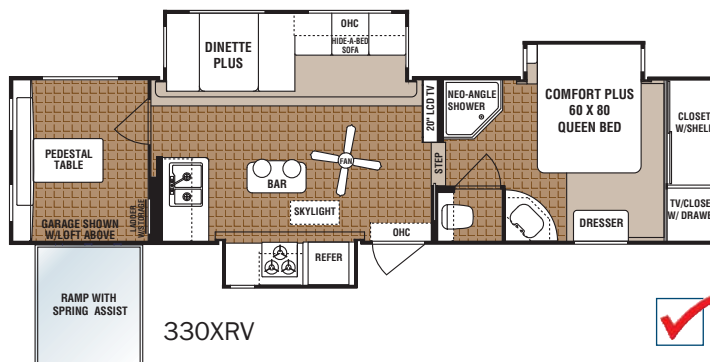
- OHC
- OHC
- OHC
- WIDE-A-RED SOFA
- FLUSH FLOOR SLIDE OUT
- BAR STOOLS
- SKYLIGHT
- REFER
- DINETTE
- OHC
- FLUSH FLOOR SLIDE OUT
- CHAIR
- STEP
- CUTTING CENTER
- NEO-ANGLE SHOWER
- COMFORT PLUS 60 X 80 QUEEN BED
- DRESSER
- TV/CLOSET W/ DRAWER
- CLOSET W/ SHELF

2014 Forest River Freedom 3000 Floor Plan:

- Front Section:** DINETTE PLUS, HIDE-A-BED SOFA, OHC (Overhead Cabinet).
- Kitchen Area:** FLUSH FLOOR SLIDEOUT, COUNTER, SINK, STOVE, REF (Refrigerator), OPT. SEAT TABLE, CHAIR, ENT. CENTER.
- Bathroom:** NEO-ANGLE SHOWER, TOILET, CLOSET.
- Rear Section:** COMFORT PLUS 60 X 80 QUEEN BED, DRESSER, TV/CLOSET W/ DRAWER, CLOSET W/ SHELF.
- Other Features:** OHC, OPT. SEAT TABLE, CHAIR, ENT. CENTER, STEPS, CLOSET.

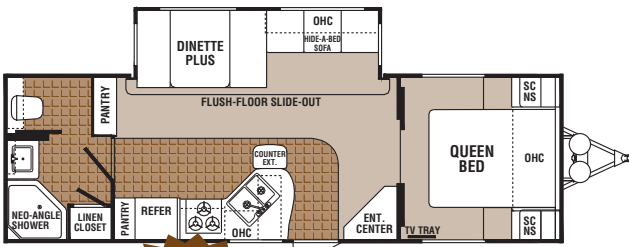
Floor plan of the 2014 Jayco Jay Flight 28. The layout includes a front entrance with a center console and chairs, a dinette with a flip-up bar, a kitchen area with a flip-top bar, a bathroom with a flip-top shower, a bedroom with a king bed and dresser, and a closet with a TV/drawer unit. The plan also shows a pantry with drawers below, a refrigerator, and a hidden bed sofa.

This diagram shows the floor plan of a motorhome. The layout includes a front section with a 'COMFORT PLUS 60 X 80 QUEEN BED' and an 'OHC' (Overhead Cabinet) above it. To the right of the bed is a 'TUB' and a 'REFER' (Refrigerator). The central area features a 'U-SHAPED DINETTE' with a 'HIDE-A-BED' above it and a 'FLUSH-FLOOR SLIDE-OUT' below it. To the right of the dinette is a 'COUNTER EXT.' (Extended Counter) with a 'SINK' and a 'STOVE'. A 'STEP' is located near the counter. The rear section includes a 'DOUBLE BUNK' and a 'BUNK OVER FLIP SOFA'. A 'DRESSER' is located near the bunk area. The plan also shows 'ENT. CENTER' (Entrance Center) and 'LINEN PANTRY' areas.



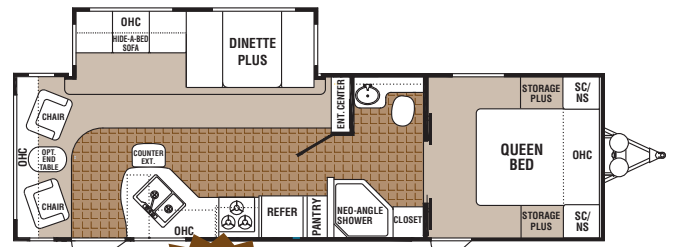
330XRV

TRAVEL TRAILER FLOORPLANS



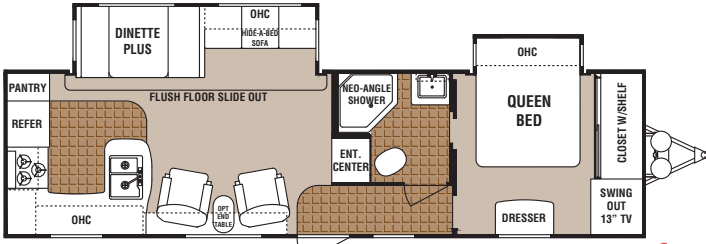
26FB-DSL

1/2 Ton Towable

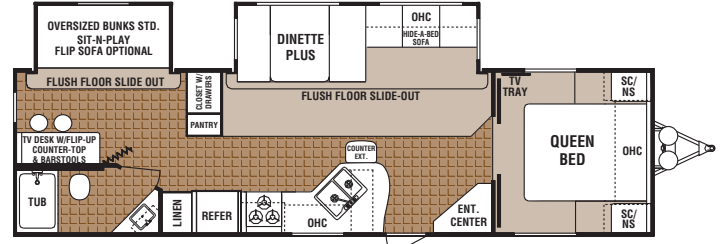


270RL-DSL

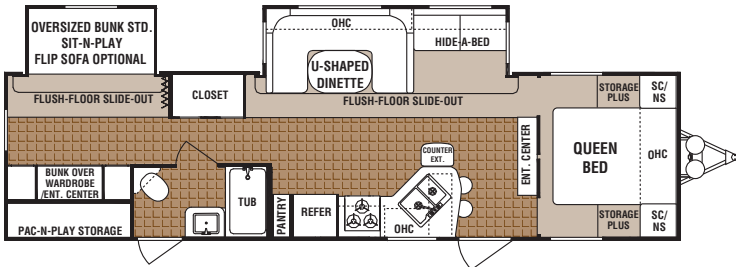
1/2 Ton Towable



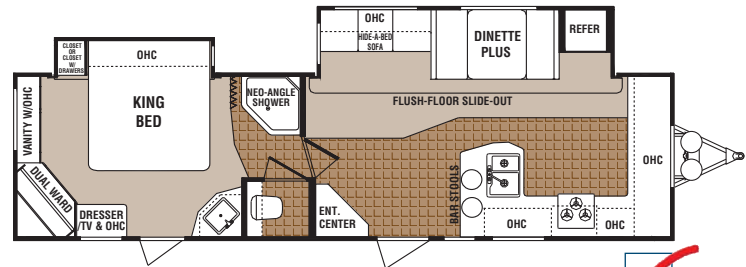
295BS-DSL Available with J-sofa option



30BS-DSL Available with optional second entry door in bath



312BH-DSL Shown with optional bath entry



31FG-DSL-BS

WEIGHTS & SPECIFICATIONS

TRAVEL TRAILERS	26FB-DSL	270RL-DSL	295BS-DSL	30BS-DSL	31FG-DSL-BS	312BH-DSL
Unloaded Vehicle Weight	6836	7035	7782	8142	8131	8321
Hitch Dry Weight	858	852	1051	980	1186	1312
GVWR	9680	11176	11176	11176	11176	11176
Cargo Capacity	2844	4141	3394	3034	3045	2855
Length	29'9"	31'2"	34'1"	33'11"	34'11"	35'7"
Exterior Width	8'	8'	8'	8'	8'	8'
Exterior Height	11'0"	11'0"	11'0"	11'0"	11'2"	11'2"
Fresh Water Capacity	46	46	46	46	46	46
Grey Water Capacity	42	42	42/42	42/42	42/42	42/42
Black Water Capacity	42	42	42	42	42	42
Furnace Size (BTUs)	30000	34000	30000	34000	34000	34000

Tire Size (all models) ST225/75R15(D)

FIFTH WHEELS	28LB-M5	28LBBS-M5	28RK-M5	28RKBS-M5	28RL-M5	28RLBS-M5	31RGS-M5	31SBBS-M5	320TS-M5	326QB-M5	330XRV
Unloaded Vehicle Weight	8471	8765	7908	8237	7812	8151	9255	8835	9482	9216	10043
Hitch Dry Weight	1648	1832	1345	1618	1482	1709	1752	2094	2108	2040	2221
GVWR	10560	10560	10560	10560	10560	10560	12192	12192	12192	12192	13000
Cargo Capacity	2089	1795	2652	2323	2748	2409	2937	3357	2710	2976	3357
Length	33'6"	33'6"	32'7"	32'7"	31'3"	31'2"	34'7"	35'2"	35'11"	36'	35'8"
Exterior Width	8'	8'	8'	8'	8'	8'	8'	8'	8'	8'	8'
Exterior Height	12'6"	12'6"	12'6"	12'6"	12'6"	12'6"	12'6"	12'6"	12'6"	12'6"	13'
Fresh Water Capacity	46	46	46	46	46	46	46	46	46	46	46
Grey Water Capacity	42/42	42/42	42/42	42/42	42/42	42/42	42/42	42/42	42/42	42	42
Black Water Capacity	42	42	42	42	42	42	42	42	42	42/42	42/42
Furnace Size (BTUs)	30000	30000	34000	34000	34000	34000	34000	34000	34000	34000	34000

Tire Size (all models except 330XRV): ST225/75R15(D) 330XRV Tire Size: ST23580R/16E



Rain Bay

All Denali are tested in our exclusive "extreme weather" rain bay facility.

Vehicle loading - Every effort has been made to provide the greatest number of options for the recreational vehicle owner. Along with these choices comes the responsibility to manage the loads that are imposed by the choices that they remain within the manufacturer's specified chassis weight limits. Do not overload the recreational vehicle.

Some optional equipment not included. Net carrying capacity (NCC) is determined by subtracting unloaded vehicle weight (UVW) from gross vehicle weight (GVWR) and includes fluids, options and cargo. Liquid capacities and weights are approximations only. Warning - This information is intended as a guide only. Weights of individual vehicles may vary. Consult your owner's manual for complete loading, weighing and towing instructions. *UVW and Hitch Dry Weight are base weights of units without options. Each unit includes a weight label which lists specific weight information for that unit.

THE DENALI GUARANTEE:

The best built product, with the best features for the best price.

What does the competition offer?

Denali	The Competition	Interior Items	Denali	The Competition	Exterior Items
✓	■	6'7" Living area slide room height (FW)	✓	■	Weather Guard Package with R14 roof insulation and heated, enclosed and insulated underbelly
✓	■	Comfort Plus queen bed (FW bed slides)	✓	■	Detachable 30 amp power cord/50 amp optional
✓	■	Aluminum-framed, laminated bath deck (FW)	✓	■	Front fiberglass cap with area lights (FW)
✓	■	Residential, steel, roller drawer guides	✓	■	Rear ladder (FW, optional TT)
✓	■	12V Power exhaust roof vent in bath	✓	■	Electric front jacks with rear stabilizer jacks (FW)
✓	■	Sink and stove cover	✓	■	Front/rear stabilizer jacks (TT)
✓	■	Skylight in bath	✓	■	13.5 BTU ducted air conditioner (15K optional)
✓	■	Glass shower doors recessed into shower base (neo-angle showers)	✓	■	A&E patio awning
✓	■	Hide-a-bed sofa	✓	■	Hitch Helper system (FW)
✓	■	Solid wood, arched cabinet doors	✓	■	Extra large entry-assist handle and interior handle
✓	■	Solid wood refrigerator fronts	✓	■	Cable and satellite hook-ups
✓	■	Slider windows on sides of living room slide	✓	■	Exterior, hot and cold spray away shower with 15' hose
✓	■	Designer <i>Howard Miller</i> clock	✓	■	GL20 Extra dark tint windows
✓	■	8 cu.ft. Double door refrigerator (FW)	✓	■	Spare tire
✓	■	LCD flat screen TV with swing arm	✓	■	EZ lube hubs
✓	■	4 interior speakers & 2 exterior speakers	✓	■	1.5" Quick-drain fresh water tank
✓	■	Porcelain toilet with foot flush lever	✓	■	"San-t-flush" black tank flush
✓	■	10 Gallon gas/electric DSI water heater with water heater bypass (FW, optional TT)	✓	■	65 Amp power converter
✓	■	<i>Magic Chef</i> oven with auto ignition	✓	■	Every unit 100% extreme weather rain bay test
✓	■	<i>Hydro Flame</i> forced air, DSI furnace with wall thermostat	✓	■	Large pass-through storage (FW)
✓	■	Ceiling fan with light (FW)	✓	■	Laminated rear wall (all models)
✓	■	Range hood with 12V light and exhaust fan	✓	■	Laminated front wall (TT)
✓	■	Countertop extension (where possible)	✓	■	Anti-wicking paint around all wall openings
✓	■	Premium high-rise galley faucet	✓	■	Aluminum diamond plate rock guard (TT)
✓	■	Hinged dinette seats with storage below	✓	■	Triple-sealed slide out system
✓	■	<i>Norcold</i> refrigerator with easy temp adjustments	✓	■	30" Radius corner entry door

*See your local dealer for available options

www.Denali-rv.com

Premium Options At Value Prices

Equa-Flex Suspension*



Equa-Flex suspension with shock absorbers isolate and absorb road shock and provide better protection of your trailer.

*Optional features

Aluminum Rims*



Customize your Denali travel trailer or fifth wheel with the Aluminum Rims Package.

A division of Dutchmen Manufacturing, Inc.
2164 Caragana Court ■ Goshen, IN 46526
Sales: 574.534.1224 ■ Fax: 574.975.0626

Your Local Denali® Dealer

Product information, specifications, and photography in this brochure were as accurate as possible at time of printing. Photographs may contain some features that are optional on your vehicle. Since we continually strive to improve our products, actual products may differ. Prices and specifications are subject to change without notice. All capacities are approximate and dimensions are nominal. Some features or options may be different or unavailable in Canada. Vehicles are designed for recreational use only and not intended for use as a primary residence. All product brand names used in this brochure are registered trademarks of Thor Industries Inc. Unauthorized use of trademarks is prohibited by law.
©2008 Thor Industries, Inc.

rev2DN1/08