

2008



CLASS A DIESEL
MOTORHOMES

DEDICATED TO QUALITY,
INNOVATION AND VALUE.

GULF STREAM



COACH, INCORPORATED
FAMILY VALUE



Yellowstone
BY GULF STREAM®



Real Diesel, Real Affordable

Yellowstone

BY GULF STREAM®



MODERN COCKPIT...

The cockpit of the Yellowstone luxury diesel pusher is spacious and designed to give you total control over all systems on your motorhome. You will be impressed with the comfort and ergonomic layout.

GALLEY CONVENIENCE...

Our wide-open galley offers all the comforts of your kitchen at home. 3-burner high performance range; 2-door, 2-way refrigerator and large convection microwave and an optional dish washer you will be able to prepare any of your family's favorite meals.



MODEL 8356



MODEL 40UL

COMFORTABLE DINING...

Gulf Stream delivers in the pullout design and construction of the dinette table and seating. Allowing 4 to sit comfortably.

Enhanced by large panoramic windows to take in the view while dining in your luxury motorhome.



GPS / MP3 SYSTEM



LOW-PROFILE SATELLITE

TECHNOLOGY...

Traveling is easy and enjoyable with our optional GPS Navigation system and our Low-Profile Satellite system. Now millions of destination are within your grasp! Make the most of your time on the road with the satellite service. With the entertainment package you are always going to have the best seat in the house!



MODEL 8390



MODEL 324

SPACIOUS LIVING QUARTERS...

Open living areas that incorporate full wall slide rooms and residential style furniture make this home away from home very comfortable. The overhead LCD TV and the entertainment cabinet provide plenty of storage for music and movies to entertain everyone on a rainy day or quiet evening.

GULF STREAM

COACH, INC. ESTABLISHED 1965
FAMILY V.

Real Diesel, Real Affordable

Yellowstone
BY GULF STREAM®



MODEL 8390



MODEL 324

Large bedroom windows open up the bedroom letting in natural light and fresh air and the bunk option (40UL) gives you the extra sleeping space and privacy when you need it. The bedroom delivers plenty of storage for both his and her clothing. All floorplans include deep dresser drawers and large wardrobe storage to hang attire.



MODEL 8390

BATHROOM...

The bathroom in the Yellowstone makes it easy to prepare for the day ahead. The mirrored medicine cabinet and under-sink storage gives you room to hide away personal products, and the skylight in the shower stall provides natural light and additional headroom for tall travelers.



MODEL 40UL



MODEL 324

RESTFUL NIGHTS...

Gulf Stream knows that a comfortable night's sleep is an integral part of a great travel experience. That's why we give you many amenities that you enjoy at home in our elegant bedroom areas. Items including a king or Queen size bed, windows at the head of the bed for ventilation, air conditioning, vanity mirror, overhead storage and Optional 20" LCD television.



Exclusive Features & Benefits



SOLID HARDWOOD CABINETRY



Our residential style cabinets are constructed of solid hardwood doors and fronts that are predrilled and screwed then they are stained and top coated with a furniture grade finish that provides long lasting beauty and durability as well as adding strength and quietness to your motorhome.

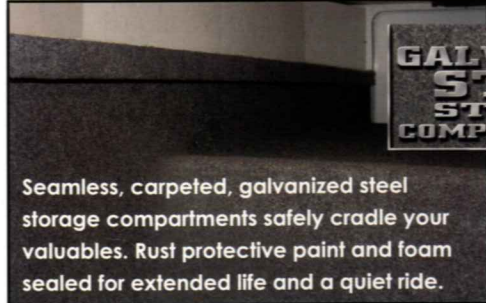
Other companies use wrapped cabinet fronts prone to peeling, fading and tearing. The softer composite wood used does not hold screws as well as hardwood resulting in loss of strength and squeaking. Discoloration will degrade the beauty and lower the value of the motorhome.



PREDRILLED HARDWOOD CONSTRUCTION



COMPETITOR'S CABINETRY

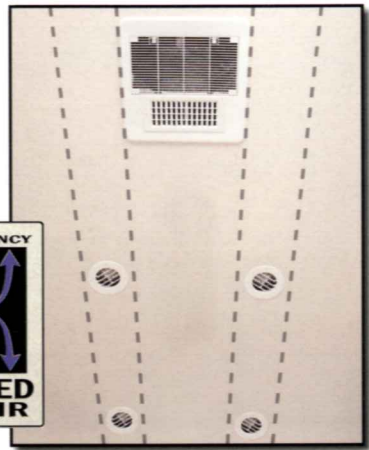
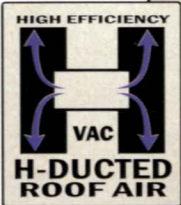


GALVANIZED STEEL STORAGE COMPARTMENTS

Seamless, carpeted, galvanized steel storage compartments safely cradle your valuables. Rust protective paint and foam sealed for extended life and a quiet ride.

**24 MONTH
24,000 MILE
WARRANTY
ON STRUCTURAL COMPONENTS***

*or 12,000 mile total use warranty under normal use against defects in material and workmanship in construction and original components. Excludes this warranty. Structural components shall be limited to a structure of the side walls, front and back walls, roof and floor. See the official written Gulf Stream Coach, Inc. Warranty for details.



Dual metal H-Ducted air conditioning system with foil bubble wrapped insulation for superior climate control.

Excellent Weathering - Maintaining the vehicle's quality appearance enhances its resale value.



Tear Resistance - Flexroofs hard abuse resistant finish resists tearing, a condition that can cause leaks and lead to expensive repair.

Low Maintenance - Road grime can easily be removed with normal cleaning maintenance. Rubber chalking due to solar breakdown of the roof surface is eliminated, preserving the original appearance and resale value of the vehicle.

Stain Resistance - Fiberglass Flexroof is designed to resist staining and maintain its quality appearance.

Structural Integrity - Unlike conventional EPDM rubber roof membranes, Flexroof is a structural component of the roof system.

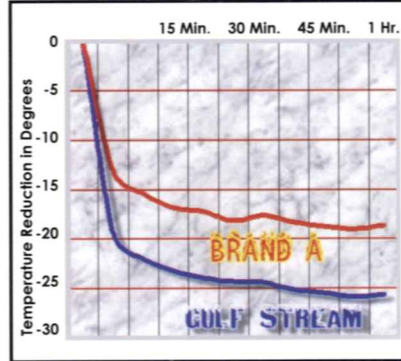
Textured Fiberglass - Helps dissipate heat and prevents tree limbs from tearing or scratching your roof.



Comfort Plus furniture by Gulf Stream Coach features residential styling, solid construction, total comfort and a comprehensive warranty.

FLUSH FLOOR Slide out rooms

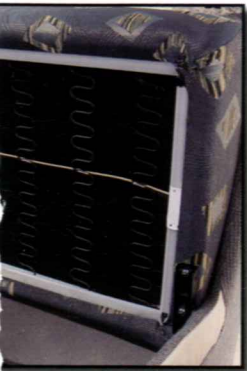
Gulf Stream offers true flush floor slide out rooms to give you more headroom in the slide and eliminates the step up into the slide room that you will experience in many of our competitors motorhomes.



GULF STREAM VS. BRAND A Cool Down Comparison

- At 15 minutes, Gulf Stream cooled 7 degrees cooler.
 - At 30 minutes, Gulf Stream cooled 9 degrees cooler.
 - At 1 hour, Gulf Stream cooled 9 degrees cooler.
- Finally, empirical data demonstrating the efficiency and performance of a roof air conditioning system versus a floor air conditioning system.
Winner: Roof air conditioning by Gulf Stream

Cradle of Strength



Unlike traditional plywood and foam seating Comfort Plus dinette seating features the strength of steel and the comfort of a sprung cushion.

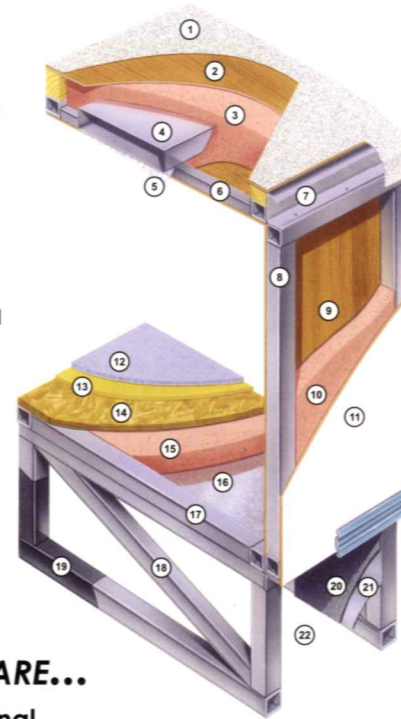
1. Seamless Fiberglass Roof For Greater Energy Efficiency, Durability and Dependability.
2. Luan Decking for Additional Strength.
3. Molded, High Density EPS (Expanded Polystyrene) Roof Brick Insulation - Provides Consistent Insulation Value as well as Superior Dimensional Rigidity.
4. One-Piece Formed Aluminum Air Conditioning Duct, Completely Surrounded By EPS Insulation.
5. Bubble-Wrapped Foil Insulation Provides Superior Insulation and Helps Prevent Condensation.
6. Rugged Welded Tubular Aluminum Roof Framing.
7. Heavy-Gauge Aluminum Radius Transition.
8. Rugged Heavy-Gauge Tubular Aluminum, Fixture Welded to Form the Sidewall Framing.
9. Interior Wall Panels Laminated to Sidewall Framing.
10. High-Density EPS Insulation Provides Superior Lamination and Bonding Characteristics and Insures Greater Energy Efficiency.
11. "Super Slick" Fiberglass Exterior Vacuum-bond Laminated to Sidewall Framing for Lasting Beauty and Durability.
12. High-Quality Stain-Resistant Carpeting Available in Designer Coordinated Colors.

ALL STEEL OVERHEAD STRUCTURE



TUFFTRUSS
6000 lbs.

13. Extra-Thick Padding Under Carpet Provides Extra Comfort and Increases Carpet Durability.
14. Seamless Structurewood Floor Decking Laminated to Steel Floor Structure Assures a Quiet, Long-Lasting Rigid Floor.
15. Block Foam Insulated Floor
16. Seamless Layer of Galvanized Steel Securely Laminated to the Steel Floor Framing.
17. Heavy-Gauge Tubular Steel Floor Framing, Fixture Welded for Extra Strength and Stability.
18. Heavy-gauge Tubular Steel Framed, Fixture Welded Truss System Provides the Strongest Foundation in the Industry.
19. Rust-Prohibitive Paint Coating Applied to All Steel Framing Assures Corrosion and Rust Protection.
20. Durable All-Weather Carpeting Completes Each Accessible Storage Compartment, Providing Extra Protection for Luggage and Valuables.
21. Galvanized Steel Used to Form Each Storage & Holding Compartment.
22. The Industry's Strongest, Most Spacious Exterior Storage Compartments.

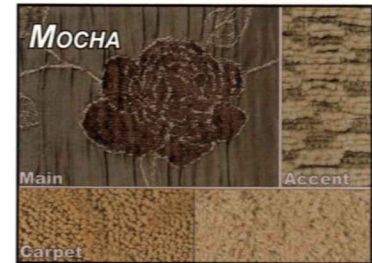
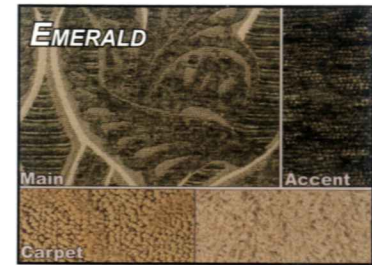


TAKE THE TIME TO COMPARE...

and you will see the exceptional value of a Gulf Stream Coach

The Cradle of Strength super strength truss system is unmatched in the RV industry. The structural subfloor foundation begins by welding a network of integrated steel trusses to the chassis rail. Specifically designed to distribute and transfer the tremendous forces from the coach to the chassis rail, these trusses are individually tested to withstand 6,000 pounds each.

An all steel overhead structure installed above the cockpit brings strength and rigidity to the upper portion of the coach providing a safe strong platform to install a TV that will not break free in an impact while maximizing head storage.



GULF STREAM
COACH, INCORPORATED
FAMILY VALUE

Standards & Options

Yellowstone
BY GULF STREAM®

CHASSIS

- 28,000 GVWR, 350HP CAT (C-7) WORKHORSE, 100 FUEL TANK W/STEEL WHEELS & VIP STEERING WHEEL (8356)
- 32,000 GVWR, 350HP CAT (C-7) WORKHORSE, 100 FUEL TANK W/STEEL WHEELS & VIP STEERING WHEEL (8386 8390 40UL 40K)
- 27,000 GVWR, 340HP CUMMINS FREIGHTLINER, 55 FUEL TANK W/STEEL WHEELS (325)
- 22,000 GVWR, 300HP CUMMINS FREIGHTLINER, 60 FUEL TANK W/STEEL WHEELS (324)

EXTERIOR

- "Cradle of Strength" Construction:
 - Welded Steel Sub-Floor Truss System
 - 1-1/2" Tubular Metal Cage Construction on Sidewalls & Roof
 - Insulated Floors w/Virtually Seamless Structurewood Decking
 - Vacuum-Bond Laminated 2" Thick Sidewall Construction Smooth Filon Fiberglass
- PRE-MOLDED FRONT & REAR FIBERGLASS CAPS
- LAMINATED FIBERGLASS ROOF
- SLICK FIBERGLASS EXTERIOR W/GRAPHICS
- THERMOPANE RADIUS WINDOWS

HEATING & COOLING

- DASH A/C
- (1) 40,000 & (1) 25,000 BTU FURNACES (8356 8386 8390 40K 40UL)
- 40,000 BTU DUCTED FURNACE (324 325)
- 2 13,500 BTU DUCTED ROOF A/C (FRONT & REAR)
- 3 A/C's (UL)

MISCELLANEOUS

- HEATED HOLDING TANKS
- EXTERIOR SIDEVIEW MIRRORS w/HEAT
- ARCTIC PACKAGE
- STAINLESS STEEL WHEEL INSERTS
- JACK LEVELING SYSTEM
- 10,000 LB TRAILER HITCH (8356 8386 8390 40UL 40K)
- 5,000 LB TRAILER HITCH (324)
- INTERIOR S.S. ENTRY ASSIST HANDLE
- CARPETED STORAGE BINS

- 3,5000 lb Trailer Hitch (325)
- MUD FLAPS (FRONT & REAR)
- ELECTRIC STEP COVER
- POWER STEPWELL COVER (8386 40UL 40K)
- FIRE EXTINGUISHER
- MAIN POWER AWNING
- SLIDE OUT TOPPERS
- RALLY HOOK UP
 - HOSE FAUCET
 - PAPER TOWEL ROLL DISPENSER
 - CABLE TV HOOKUP
 - TELEPHONE HOOKUP
- REAR LADDER
- CENTRAL VAC SYSTEM

ELECTRICAL

- OVERHEAD DEFROST BLOWER
- COLOR BACK-UP MONITOR W/AUDIO & SIDE CAMERAS
- WALL SWITCHES FOR ALL CEILING LIGHTS
- AM/FM/CASSETTE STEREO W/C D PLR & SPEAKERS
- EMERGENCY START SWITCH IN DASH
- MAP LIGHTS
- ANTENNA W/AMPLIFIER, BOOSTER & 2 JACKS
- CB ANTENNA
- (1) PHONE JACK IN KITCHEN & (1) IN BEDROOM
- AUTO DOUBLE ELECTRIC STEP
- 37" LCD TV IN LIVING ROOM (8390)
- 32" LCD TV OVERHEAD (324 325 40UL)
- 32" LCD FEATURE WALL (8356 8386)
- 19" LCD DINNING ROOM (8390)
- DVD READY
- DSS PREP
- LIGHTED EXTERIOR STORAGE BINS

BATH

- POWER VENT IN COMMODE & SHOWER AREA
- SKY DOME IN BATH
- SHOWER W/GLASS DOOR & SURROUND
- PORCELAIN STOOL W/SPRAYER
- HOLDING TANK FLUSH KIT

DÉCOR

- MIRRORING MEDICINE CABINET
- PRIVACY CURTAIN
- CORIAN KITCHEN COUNTERTOP
- LINOLEUM IN KITCHEN, BATH & HALL
- PLEATED SHADES
- METAL MINI BLIND KITCHEN
- VINYL CEILING LINER
- DECORATIVE CROWN CEILING MOLDING
- MAPLE HARDWOOD INTERIOR

FURNISHINGS

- 2-TONE COPILOT SEAT
- 2-TONE PILOT SEAT
- 3-POINT SEAT BELTS
- SOFT TOUCH EURO RECLINER & OTTOMAN (PS) (8356)
- 78 X 80 KING BED W/POWER HEAD REST (40K 40UL)
- 60 X 74 BED W/DELUXE INNERSPRING MATTRESS (8356)
- 60 X 80 BED W/DELUXE INNERSPRING MATTRESS (8386 8390 324 325)
- CLOTH SLEEPER (H-A-B) SOFA (DS)
- COMFORT PLUS DINETTE BOOTH BED
- (2) THROW PILLOWS (PER SOFA) & (2) BEDROOM PILLOWS
- SILVERWARE DRAWER (8356 8386 8390 324 325)

APPLIANCES

- LARGE DOUBLE DOOR, 2-WAY REFER
- MONITOR PANEL
- 30" OTR CONVECTION MICROWAVE
- 3-BURNER TOP
- FLUSH STOVE TOP COVER
- 10 GAL DSI WATER HEATER
- 115# LP GAS BOTTLE (8356 8386 8390 40K 40UL)
- 85# LP GAS BOTTLE (324 325)
- CARBON MONOXIDE DETECTOR
- LP GAS LEAK DETECTOR
- PREP FOR WASHER/DRYER (8356 8386 8390 40K 40UL)

POWER

- (2) 12 VOLT AUXILIARY BATTERIES
- BATTERY DISCONNECT
- 50 AMP SERVICE W/AUTO TRANSFER SWITCH & 80 AMP CONVERTOR
- 8.0 POWERTECH QUIET DIESEL GENERATOR w/ EMS (40UL)
- GENERATOR READY

Coach-Net®
24 HR. EMERGENCY ROADSIDE ASSISTANCE

- One Year Coach-Net Membership
- Towing and Winching
- Flat Tire Change
- Mobile Mechanic
- Delivery of emergency Fluids
- Jump-Start / Battery Boost
- Lockout



STANDARD BODY PAINT



PLATINUM BEIGE



PEWTER DEL SOL



TITANIUM BLACK



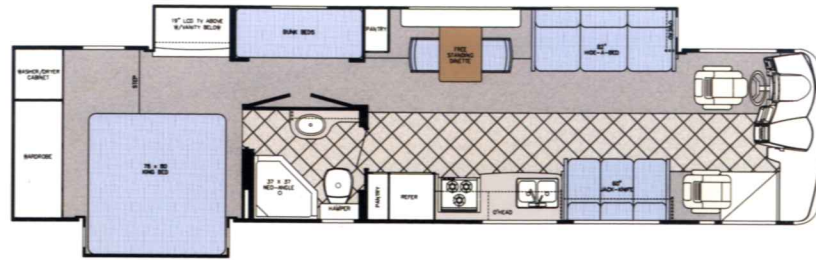
CARBON SLATE

(Yellowstone® stripes are vinyl decals)



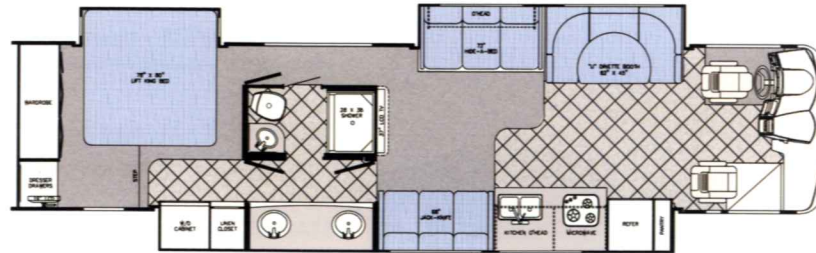
MODEL 40 UL

Chassis	Workhorse	Wheelbase	260"
Engine	350 CAT	Fresh	90 gal.
Fuel	100	Grey	75 gal.
GVWR	32,000	Black	75 gal.
Length	40'-6"	LP Gas Tank	115 lbs.
Width	100"	Furnace (BTU's)	40,000/25,000
Height w/AC	12'-6"	Water Heater w/DSI	10 gal.
Interior Height	90"		



NEW MODEL 40 K

Chassis	Workhorse	Wheelbase	276"
Engine	350 CAT	Fresh	90 gal.
Fuel	100	Grey	75 gal.
GVWR	32,000	Black	75 gal.
Length	41'-11"	LP Gas Tank	115 lbs.
Width	100"	Furnace (BTU's)	40,000/25,000
Height w/AC	12'-3"	Water Heater w/DSI	10 gal.
Interior Height	84"		



MODEL 8356 YSW

Chassis	Workhorse	Wheelbase	228"
Engine	350 CAT	Fresh	70 gal.
Fuel	100	Grey	75 gal.
GVWR	28,000	Black	75 gal.
Length	38"	LP Gas Tank	115 lbs.
Width	100"	Furnace (BTU's)	40,000/25,000
Height w/AC	12'-3"	Water Heater w/DSI	10 gal.
Interior Height	84"		



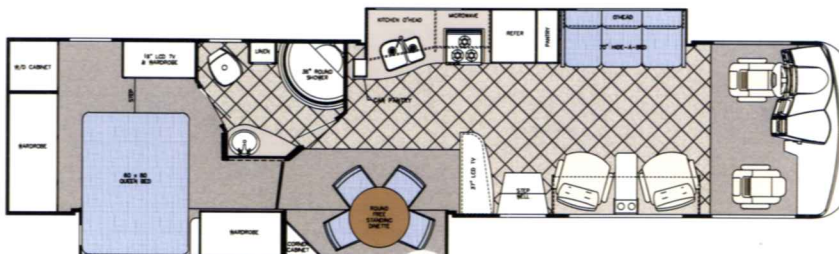
MODEL 8386 YSW

Chassis	Workhorse	Wheelbase	252"
Engine	350 CAT	Fresh	90 gal.
Fuel	100	Grey	75 gal.
GVWR	32,000	Black	75 gal.
Length	39'-11"	LP Gas Tank	115 lbs.
Width	100"	Furnace (BTU's)	40,000/25,000
Height w/AC	12'-3"	Water Heater w/DSI	10 gal.
Interior Height	84"		



MODEL 8390 YSW

Chassis	Workhorse	Wheelbase	264"
Engine	350 CAT	Fresh	90 gal.
Fuel	100	Grey	75 gal.
GVWR	32,000	Black	75 gal.
Length	40'-8"	LP Gas Tank	115 lbs.
Width	100"	Furnace (BTU's)	40,000/25,000
Height w/AC	12'-3"	Water Heater w/DSI	10 gal.
Interior Height	84"		



POPULAR OPTIONS

- BEDROOM 13,500 BTU DUCTED ROOF A/C (NA 40UL)
- 15,000 BTU DUCTED A/C IPO 13,500 BTU A/C (NA 40UL)
- 3-SPEED FANTASTIC ATTIC FAN
- HEATED & REMOTE MIRRORS
- 19" LCD COLOR TV IN BEDROOM
- DELUXE AIR HORNS
- SONY SURROUND SOUND SYSTEM W/DVD PLAYER
- GPS NAVIGATION SYSTEM & MP3 PLAYER
- KVH SATELLITE DISH
- 2000 WATT INVERTER
- 8.0 POWERTEC QUIET DIESEL GENERATOR (NA 40UL)
- 7.5 GENERAC QUIET DIESEL GENERATOR (NA 40UL)
- 2-TONE 6-WAY POWER PILOT SEAT
- 2-TONE 6-WAY POWER COPILOT SEAT
- SOFT TOUCH SLEEPER (H-A-B) SOFA IPO CLOTH SLEEPER SOFA (DS)
- F/S BUFFET DINETTE W/(2) RESIDENTIAL DINING CHAIRS IPO BOOTH DINETTE (NA 8390 40K)
- (2) FOLDING CHAIRS
- EURO RECLINER IPO SOFT TOUCH RECLINER (324)
- LARGE 2-WAY REFER W/ICEMAKER & PURIFIER
- SIDE BY SIDE REFER W/ICEMAKER & PURIFIER (NA 324 325)
- COMBO WASH/DRY W/OUTSIDE VENT (NA 324 FRED)
- DISHWASHER (8356)
- POP UP TV W/EURO RECLINER (40UL)
- 2 FLIP DOWN DVD PLAYERS (40UL)
- WARDROBE IPO BUNKS (40UL)
- COMPUTER WORK STATION IPO BUNKS (40UL)

Holding tank capacities (both fresh water and waste water) are volume calculations based on overall tank dimensions. The capacities may differ from published calculations due to the result of tank installation, tank material variation, tank fitting locations and other plumbing variables.

*Estimated length from front to rear cap.



FRONT ENGINE DIESEL

FRED FACTS

The real advantages of Front Engine Diesel.

**UP TO
12
MPG.***

* actual mileage per gallon on the FRED may vary due to road conditions, terrain, driver habits, cargo weight, or towing.



PERFORMANCE • Front Engine configuration uses natural motion and ram air to cool the engine allowing the valuable horsepower to concentrate on powering the coach, not cooling the engine.

EFFICIENCY • The Front Engine Diesel chassis touts a fuel economy of an estimated 12-13 MPG*
*actual mileage per gallon may vary due to road conditions, terrain, driver habits, cargo weight, or towing.

STABILITY • By moving the Engine to the front of the unit and by increasing the wheelbase by 20" we create a more comfortable ride. This also eliminates porpoising (the forward and aft rocking caused by the engine being placed in the rear of a unit with a smaller wheelbase) A more stable ride means less wear on the unit and on the driver.

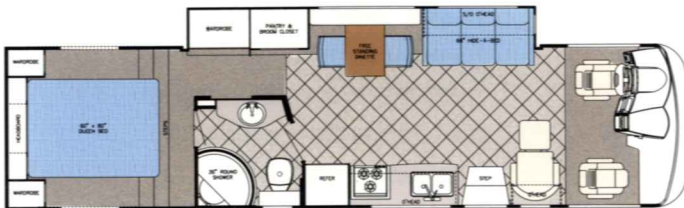


MODEL 324 FRED

Chassis	Freightliner	Wheelbase	228"
Engine	5.9L 300hp	Fresh	57 gal.
Fuel	60	Grey	50 gal.
GVWR	22,000	Black	50 gal.
Length	33'	LP Gas Tank	85 lbs.
Width	100"	Furnace (BTU's)	40,000
Height w/AC	12'-0"	A/C Front (BTU's)	13,500
Interior Height	84"	Water Heater w/DSI	10 gal.

NEW MODEL 325 FRED

Chassis	Freightliner	Wheelbase	228"
Engine	340hp	Fresh	50 gal.
Fuel	55	Grey	50 gal.
GVWR	27,000	Black	50 gal.
Length	35'-6"	LP Gas Tank	85 lbs.
Width	100"	Furnace (BTU's)	40,000
Height w/AC	12'-0"	A/C Front (BTU's)	13,500
Interior Height	84"	Water Heater w/DSI	10 gal.



G.O.L.D. Program

(Gulf Stream Ownership Lifetime of Dedication)

Gulf Stream is dedicated to our customers and their enjoyment of our products. Our golden promise is to call you within four weeks of the new vehicle purchase date welcoming you to the Gulf Stream family. This call, made by your dedicated customer care person, is to let you know that if you ever need assistance with the operation of components, troubleshooting, or if you ever need to locate an authorized service center, you can rest assured that help is but a phone call away. With the G.O.L.D. Program we'll be there for you for the lifetime of your RV.



Holding tank capacities (both fresh water and waste water) are volume calculations based on overall tank dimensions. The capacities may differ from published calculations due to the result of tank installation, tank material variation, tank fitting local

*Estimated length from front to rear cap.



MODEL 40UL

Unlike other manufacturers Gulf Stream uses the large bathroom as a partition between the bedroom and the rest of the coach. This allows you to entertain guests without having the bedroom exposed for all to see.

Open living areas that incorporate large slide rooms and residential style furniture make home away from home very comfortable.



MODEL 40UL



Entertainment has a whole new meaning! Gulf Stream provides you with an easy to use entertainment center offering an optional pop up TV, with a Euro Recliner to make movie night easy and relaxing. (40UL)

FEATURES & BENEFITS

- CUMMINS ISB 300HPDIESEL ENGINE
620 LBS.-FT. OF TORQUE - 22.5" TIRES (324)
- CUMMINS ISB 340HPDIESEL ENGINE
660 LBS.-FT. OF TORQUE - 22.5" TIRES (325)
- 22,000 GVWR FREIGHTLINER 60 GAL. FUEL (324)
- 27,000 GVWR FREIGHTLINER, 55 GAL. FUEL (325)
- 55 - DEGREE WHEEL CUT
- 60" PARABOLIC LEAF SPRING / SACHS SHOCKS
- BOSCH DISC BRAKES W/4-WHEEL ABS
- LOWERED CENTER OF GRAVITY
- LOWERED ENGINE MOUNT
- 15,000 MILE OIL CHANGE INTERVAL
- 5-YEAR / 100,000-MILE COOLANT
- 400%-LONGER-LIFE TRANSMISSION FLUID
- READILY IDENTIFIABLE SERVICE POINTS
- 5 SPEED ALLISON TRANSMISSION (300 CUMMINS)
- 6 SPEED ALLISON TRANSMISSION (340 CUMMINS)
- HARDWOOD CABINERY
- SEAMLESS FIBERGLASS ROOF
- GALVANIZED STEEL COMPARTMENTS
- FLUSH FLOOR SLIDE OUT ROOMS
- 13,500 BTU H-DUCTED ROOF A/C
- 40,000 BTU FURNACE
- CORIAN™ KITCHEN COUNTERTOPS
- 30" CONVECTION OVEN
- 3-BURNER RANGE TOP
- LARGE DOUBLE DOOR 2-WAY REFRIGERATOR
- 10 GALLON WATER HEATER
- 7.5 DIESEL QUIET GENERATOR
- JACK LEVELING SYSTEM
- COLOR BACK-UP MONITOR W/SIDEVIEW CAMERAS
- 5,000 LBS. HITCH (324)
- 3,500 LBS. HITCH (325)
- ELECTRIC IGNITION WATER HEATER W/BY-PASS VALVE
- 85# LP GAS BOTTLE
- LP GAS LEAK DETECTOR
- CARBON MONOXIDE DETECTOR
- ARCTIC PACKAGE
- HEATED HOLDING TANKS,
- REAR LADDER

POPULAR OPTIONS

- 3-SPEED FANTASTIC FAN
- 19" LCD BEDROOM TV
- HEATED / REMOTE MIRRORS

**DEDICATED TO QUALITY,
INNOVATION AND VALUE.**

GULF STREAM



COACH, INCORPORATED
FAMILY VALUE

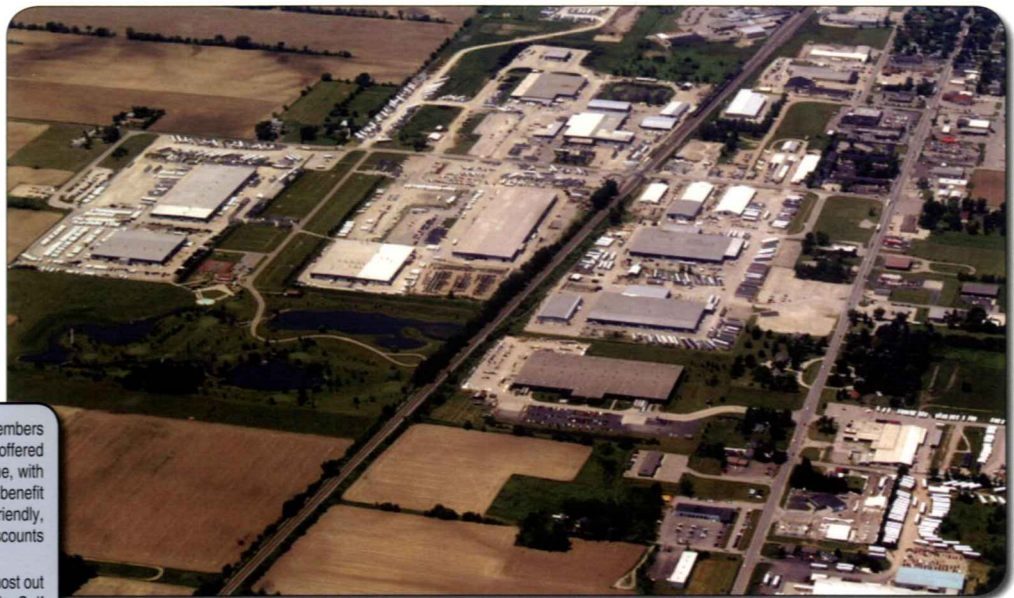
Gulf Stream Coach

has been a manufacturer of recreational vehicles for over 25 years. Our slogan, "Family Value", speaks to our family-owned company, the value offered in our products and to our customers.

We use advanced manufacturing techniques to build everything from entry-level travel trailers to luxury motorhomes. We offer the largest product line in the industry.

RV dealers and consumers look to Gulf Stream for high-value products offering quality construction, innovative features, contemporary design, unmatched service and on-going support.

We'd love to have you as part of the family



INTERNATIONAL RECREATIONAL VEHICLE CLUB

The Gulf Streamers RV Club is a valuable benefit to all Gulf Stream owners. Members enjoy staying active and participating in the various rallies and caravans offered throughout the United States and Canada. The Main Stream, the club Magazine, with up-to-date product information, service tips and company highlights. Members benefit from the Emergency Road Service and Gulf Streamers Insurance options. Both are available at competitive rates with friendly, reliable service. The 10% discount program at campgrounds throughout the U.S. and Canada. As a member, you'll receive discounts at National Theme Parks and special attractions, including RV and travel guides, directories and magazines.

Gulf Streamers spend time touring attractions, enjoying fabulous meals, taking in area highlights and shows to help make the most out of your RV experience. Special rallies throughout the year include Gulf Stream supplier seminars, complimentary minor repairs by Gulf Stream technicians, Gulf Stream dealer product displays and round table discussions to voice your product improvement ideas.

Visit <http://streamers.gulfstreamcoach.com/> for more information.



POST OFFICE BOX 1005
• YOUR GULF STREAM COACH DEALER •
NAPPANEE, IN 46550

VISIT www.GULFSTREAMRV.com

For more information and availability options, contact your local Gulf Stream dealer, www.gulfstreamRV.com or Gulf Stream Coach, Inc. Gulf Stream Coach, Inc., reserves the right to make changes in prices, colors, materials, configurations and specifications and to discontinue models at any time without notice or obligation. Gulf Stream Coach, Inc., assumes no responsibility for any error in type or print reproduction of specifications or floorplans in this brochure. Photographs may show equipment or items that are optional and are not included in the purchase price of the motorhome. Test drive and review a current model at your nearest Gulf Stream dealer. © 2008 Gulf Stream Coach, Inc., Nappanee, Indiana U.S.A.