

2008

OUTLAW

DAMON MOTOR COACH



Outlaw



The cozy loft bedroom features an incredibly comfortable 60" x 74" mattress with pillow shams and pillows. You'll also find an entertaining 15" LCD TV, lots of storage space and a special curtain to keep your bedroom private.



The galley is fully equipped for gourmet eating: a double-door refrigerator, 3-burner range and microwave and a dream dinette.



Step up to the exciting loft bedroom — it's like having a two story motorhome.



The bathroom is comfortably large with ample storage plus a full shower.



A huge 27" LCD TV with full-function booster and jack, plus a beautiful control center will keep you entertained.

Outlaw 3611 with Redwood Creek décor, cherry wood and optional faux leather hide-a-bed with air mattress.

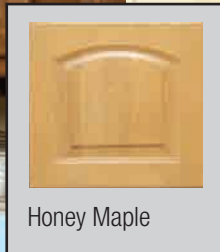
- A most arresting Toyhauler.

With an imposing new blend of feature-benefits, Outlaw will be stealing plenty of hearts in 2008. The big, bold fiberglass front cap adds a streamlined, contemporary touch with lots of eye appeal. The one-piece windshield is also new and improves visibility and safety, and it's tinted to shield the driver from the sun's glare.

Outlaw is truly the shape of things to come. On the outside, it's sleek and stylish with a sloped roof that slices through the wind. Inside, there's plenty of room in the loft bedroom with a 60" x 74" bed. You'll also appreciate the handy nightstand, 15" LCD TV and extra storage space.

Outlaw by Damon. The most wanted Toyhauler for 2008.

, including
nd oven, a



Honey Maple

unction remote, antenna,
Toshiba DVD player and
ained for hours.



Putting your toys away is child's play thanks to the rugged ramp door and pneumatic lift assist. White or décor panel walls are a bright addition to the garage interior. A comfortable Murphy bed or electric queen lift bed (shown, is optional) make sleeping super. The garage can also feature a second 15" LCD TV (inset, also optional) to entertain crews between races. There's also a cutting-edge Monster Surroundsound® system with MP3 capability.



Outlaw standard specifications and features

Chassis

Automatic leveling jacks with touchpad controls
Front and rear mud flaps
Aluminum wheels
Trailer hitch (5,000 tow lbs./500 tongue lbs.)
Emergency start circuit
Under-hood light
Automatic transmission with overdrive
Layer of neoprene vibration dampener
22.5" tires

Exterior

Wide-body design
Radius-cornered domed TPO roof
Aerodynamic front fiberglass cap
Side-mounted patio awning
Side-mounted awning over slideout
GelCoat poured sidewalls with deluxe graphics
Locking exterior storage doors
White-trimmed, radius-topped entrance door with deadbolt lock and black-trimmed clear window with shade and valance
Black-framed dual-pane windows
Patio lights
Easy-to-clean, lighted, rotocast storage compartments
Full basement pass-through storage
Gas spring-supported exterior storage doors
Rear drop-down ramp door with lift assist
Remote fuel filling station with pump and nozzle
Rear spotlights

Entry

Electric entrance step
Battery access in stairwell
Battery disconnect

Cockpit

Vinyl covered dash with pod
Electronically controlled dash air conditioning
AM/FM/CD player (single-disk, in-dash)

Cruise control
Tilt steering wheel
Map light (single pancake)
Dash fans
Tinted wraparound windshield
Windshield privacy shade
Side-mounted power mirrors with heat
Reclining swivel captain's chairs
3-point, wall-mounted seatbelts
Sun visors
Back-up monitor system with audio
Drink holders

Living Area

Euro recliner
Hide-a-bed (air)
Lambrequin window treatments
Day/night shades (except kitchen)
100% nylon carpeting with stain treatment and padding
27" LCD TV in entertainment center with full-function remote, antenna booster and jack
Video package (DVD player and control center)

Kitchen

Refrigerator: large flush-mounted, double-door
Refrigerator: raised-panel, hardwood front
3-burner range and oven
Folding range cover
Microwave oven
Lighted power range hood
Monitor panel with LPG readout
Sink cover
Pantry
Solid-wood, raised-panel cabinet doors
Vinyl tile flooring
Dream Dinette
Mini blinds
Wallpaper border
Ball-bearing drawer guides

Bathroom

Vinyl tile flooring
Shower with surround
Shower door
Fantastic® power vent
Foot-flush toilet
Wallpaper border

Bedroom (loft area)

Mattress with pillow shams and pillows
15" LCD TV
Ceiling lights with switch
Privacy curtain

Garage

Tread plate non-slip flooring
White panel walls (3611 only)
Décor panel walls (3612 only)
Air ventilation sidewall vents
A/C and heat vents
Stainless storage cabinet
TV hook-up/receptacles
Fantastic® power vent
Tie-down tracks
Miniblinds
Murphy bed (3612 only)
Monster Surround System by Pioneer and MTX, with MP3 player holder/connection and outside controls

Utilities

Air conditioner: 13,500-BTU ducted central (low profile)
Second air conditioner: 13,500-BTU ducted central (low profile)
Remote thermostatically controlled air conditioning
Furnace: 35,000-BTU electronic ignition, floor-ducted
Water heater: 6-gallon gas with electronic ignition

Water heater bypass kit
Generator: 5.5 kW Onan® Marquis Gold®
Converter: 60-amp
Dual 6-volt auxiliary batteries
Battery disconnect
50-amp, 120-volt service
Exterior shower
Enclosed heated potable and holding tanks
Black-water tank flush
Telephone hookup
Cable TV/satellite hookup
Pre-wired for roof-mounted satellite dish
Exterior GFCI receptacle
Exterior TV prep
Carbon monoxide, LP gas and smoke detectors

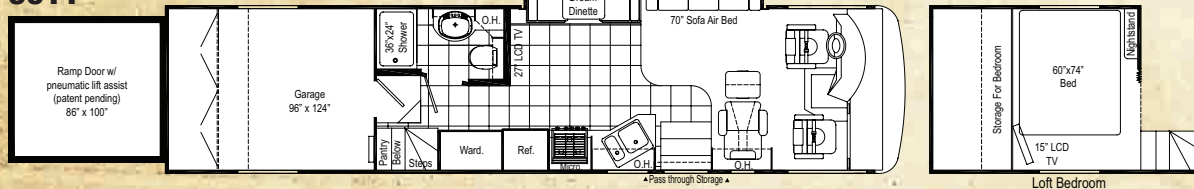
Options

Sofa/air bed (faux leather)
Electric queen lift bed – N/A 3612
15" LCD TV – N/A 3612

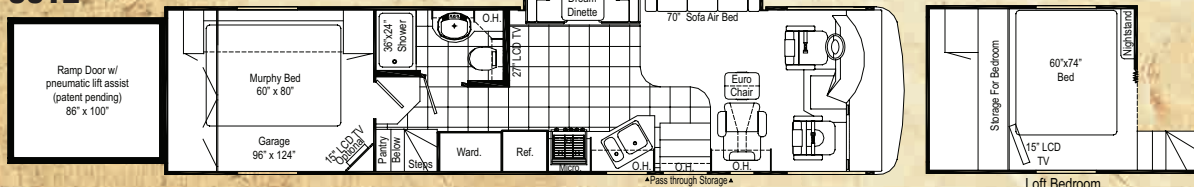
Weights and Measures

Chassis	Workhorse/Ford
Wheelbase	242
Overall length	37'2"
Overall width	101"
Overall height with AC	12'11"
Std. weight (approx. lbs.)	
3611	17,924/18,346
3612 – N/A on Ford	19,014/N/A
GVWR	24K/22K
GCWR	30K/26K
Fresh water (approx. gal.)	71
Grey/black water (approx. gal.)	53/53
LP (lbs.)	104
Sleeping capacity	5
Exterior storage capacity (cu. ft.)	131
Interior drawers	11
Interior drawer capacity (cu. ft.)	9.7
Fuel capacity (approx. gal.)	75

3611



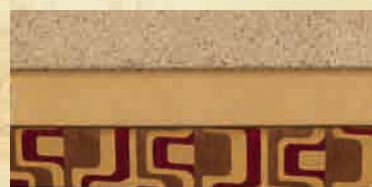
3612



P.O. Box 2888 • Elkhart, IN 46515
Customer Service: 800-860-3812 Sales Department: 800-860-5658
www.OutlawRV.com



Hickory Point



Redwood Creek



Thunder Road

Due to constant product improvements, the specifications, component parts and standard/optional equipment are subject to change without notice or obligation. Product photography or diagrams may show equipment that is optional. Damon Motor Coach reserves the right to make changes in prices and models and to discontinue models without notice or obligation. Components, parts or chassis may have been manufactured at times other than the model year indicated. All capacities are approximate and dimensions are nominal. All dry weights are based on standard model features and do not include optional features or equipment. Various RV components and features may differ to conform to local codes. Due to EPA environmental restrictions, engine power and torque ratings may change mid-year.