



Adventurer
TRUCK CAMPERS



Discover Another World.





93FDS

Since 1969, Adventurer Manufacturing's reputation has been built on a commitment to customer satisfaction. Our team of manufacturing specialists is dedicated to ensuring excellence in all areas of design, engineering, construction and assembly. Demonstrating a proven ability to listen and respond to our customers' needs, the company has grown from a small regional operation to an international industry leader, with an unrivalled reputation for outstanding service, quality and value.

OUR MISSION STATEMENT

Our mission is to be industry leaders in manufacturing recreational vehicles, and as a team do everything possible to ensure our customers' vacation dreams are realized.

To succeed in our mission, we apply the corporate standard established by Erdman Epp, founder of Adventurer Truck Campers. His rule is short, simple and successful:

"We're never satisfied until good is better...and better—best!"

The result of our total commitment to this principle is the Adventurer Truck Camper made for the adventurer in you as you explore God's beautiful creation.

ON COVER: Large Photo - 86SBS Small Photo - 950B with Extreme Exterior Graphics Package option

Adventurer



910FBS • Galley



910FBS • Big Sur Decor

Comfort Starts On The Inside.

Raised



Lowered



IN-SLIDE BUNK

The optional In-Slide Bunk allows additional sleeping accommodations with plenty of headroom and access to the large opening dinette window for easy ventilation. The effortless fold-down/up feature is easy to use and store when not needed. Comfort for a quick nap or a full-nights rest!



910FBS • Big Sur Decor

Our attractive interiors and durable exteriors are built to withstand the rigors of outdoor living. The craftsmanship and attention to detail is evident in all aspects of an Adventurer. Quality cabinet doors that fit precisely, windows that seal tightly even in the most inclement weather, beautiful upholstery and furnishings, and extra storage compartments. All this plus more add up to what we believe is the best value in the industry.

Big Sur



Espresso



Summit



DECOR • Adventurer Truck Campers use high quality durable fabrics to create pleasing decors that are functional and rugged, yet contemporary and easy to care for. These professional designer chosen fabrics coordinate beautifully with selected high quality wall coverings, galley and bath surfaces, flooring and solid shaker-style light maple cabinet doors and drawer fronts to create 3 popular new interior decor groups. Choose a color group and personalize your new camper to suit your own unique sense of style.



950B • Big Sur Leather Accent Package option



910FBS • Bath/Shower



90FWS • Galley Area



An Adventurer exclusive, the Comfort-Step Bumper provides a solid, wide platform with multiple steps to aid in safe-and-sure entry and exit from the camper. Boasting the lowest ground-to-step height of any permanently attached system, it provides sure-footed access for all ages. The aluminum design is lightweight, durable and is an attractive addition available on select floor plans. The step conveniently folds up out of the way and locks into place for travel.



COMFORT-STEP BUMPER® (OPTIONAL)



TRU-COMPOSITE® CONSTRUCTION TCC® WOOD

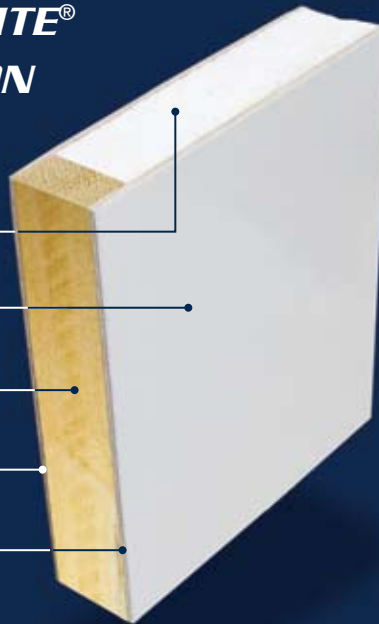
Solid Foam Core

Fiberglass Outer Shell

Wood Frame

Inside Wall Surface

Luan Plywood



Wood Framed TCC® is used on the **76R, 80W, 85WS** and **810WS**

TRU-COMPOSITE® CONSTRUCTION TCC® ALUMINUM

Lumber Core

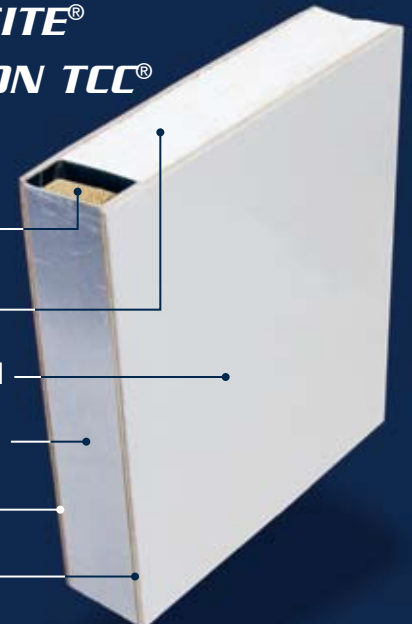
Solid Foam Core

Fiberglass Outer Shell

Aluminum Tube Frame

Inside Wall Surface

Luan Plywood



TCC® Aluminum is used on the **86SBS, 90FWS, 93FDS, 950B, 910FBS** and **106DBS**

First-Class Construction.

Framing an Adventurer Truck Camper is a craft in itself. All materials are pre-cut and hand assembled to provide a tighter, stronger fit.

1 Our composite fiberglass walls are constructed by laminating a welded aluminum tube or wood frame between an outer fiberglass shell and an inner luan laminated wood panel. The void created by these two panels is filled with a solid styrofoam insulation.

2 All units use flush-frame safety glass radius windows with gusseted corners. Solar reflective windows are standard on most models, provide greater privacy and reflect UV rays keeping the interior at a comfortable temperature.

3 The heated enclosed holding tank area is insulated with reflectics. Heat ducts in the holding tank area ensure a warm area when the furnace is in operation, leaving the zone warm & dry at all times.

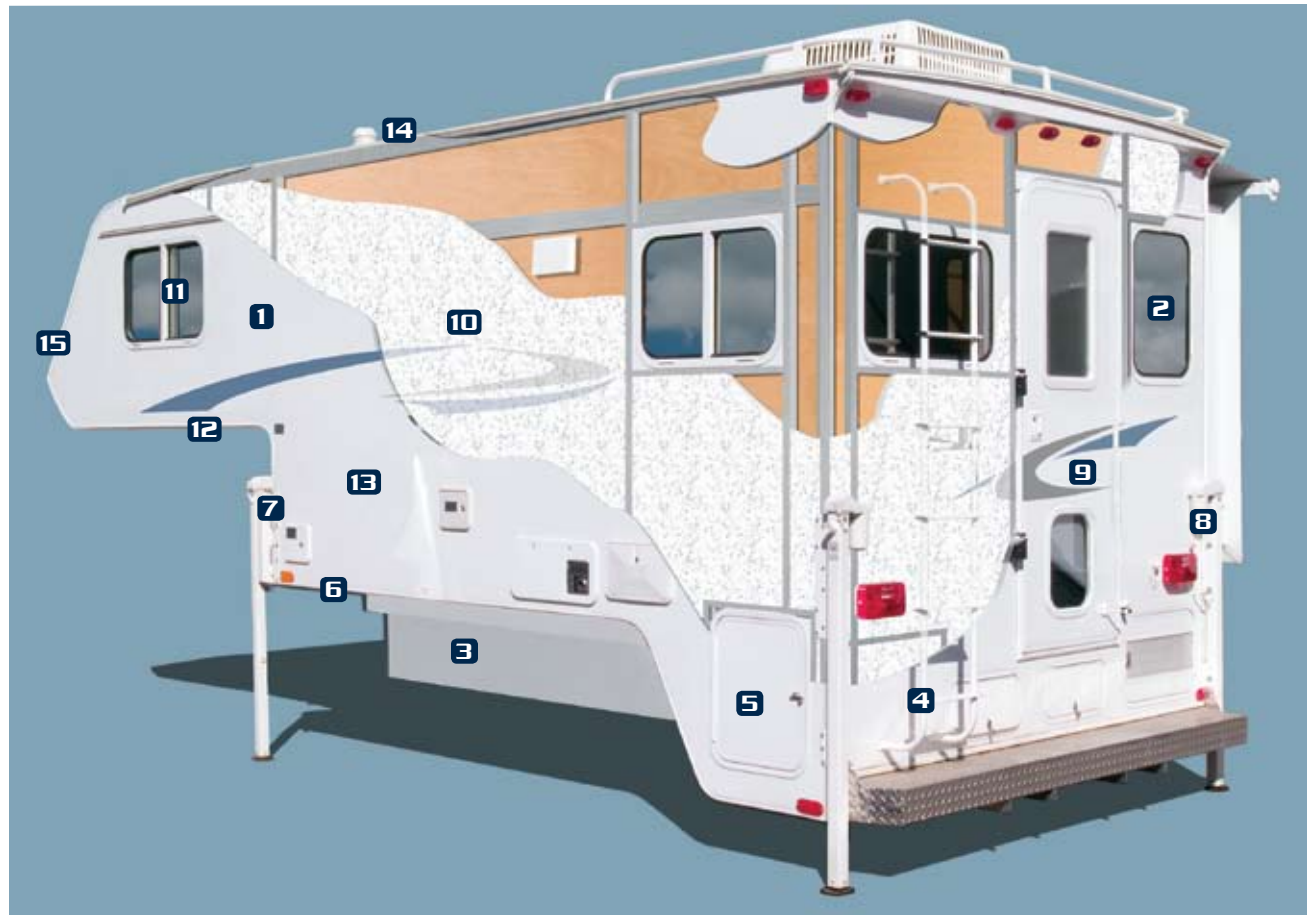
4 A sturdy powder coated aluminum ladder provides easy access to the roof. (standard most models)

5 Generous exterior storage space.

6 Tie-down brackets are bolted to the main wall and wing wall for extra reinforcement and strength.

7 Our jacks are completely bolted through the wall corners to achieve a strong and stable platform when the camper is not on the truck.

8 The Happi-Jac® camper jack system continues our tradition of quality manufacturing. Providing over 34" of lift, the Happi-Jac® screw jack safely raises and lowers the camper with ease, ensuring optimum efficiency and performance, while enhancing the look of your camper. The unique concave footpad design reduces movement and offers improved stability over convex footpads.



9 Stylish graphics enhance the look of all Adventurer Truck Campers and coordinate with today's popular truck colors.

10 All external walls are insulated with high density styrofoam for all-weather insulation, sound dampening and structural strength.

11 Large emergency egress window.

12 Floor on overhead bed is bolted in place with 3/4" bolts on each side.

13 At Adventurer we manufacture our own exterior fiberglass to exact specifications to ensure our products are always up to our high standards. We use only the best building materials, from aluminum tubing to quality solid wood cabinet doors; absolutely no particle board is used.

14 A fully framed composite panel roof is fully load bearing and walkable. A one-piece E.P.D.M. rubber roof membrane with a 12-year limited warranty is tightly sealed and is standard.

15 Molded fiberglass nose caps are standard on all TCC®-Aluminum constructed campers, are more aerodynamic and use automotive styling to complement today's popular trucks.

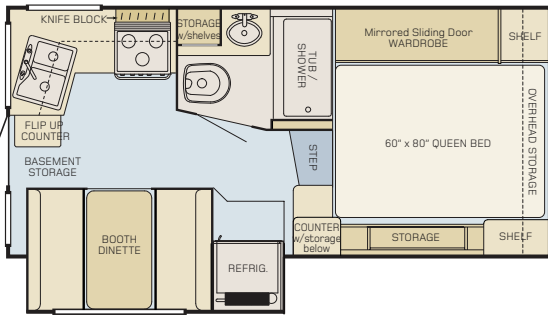
Adventurer

Specifications

	106DBS	910FBS	950B	93FDS	90FWS	86SBS	810WS	85WS	80W	76R	
45A Power Converter	●	●	●	●	●	●	●	●	●	●	
3-Burner Range Top (Piezo)								●	●	●	
3-Burner Range w/Oven, Sealed Burner (Piezo)	●	●	●	●	●	●	○	○	○	○	
Assist Handle	●	●	●	●	●	●	●	●	●	●	
Battery Compartment	●(double)	●(double)	●(double)	●(double)	●(double)	●(double)	●(double)	●(single)	●(single)	●(single)	
Bed Spread & Pillows	●	●	●	●	○	○	○	○	○		
Blinds; Day/Night	●	●	●	●	●	●	●	●(night only)	●(night only)	●(night only)	
Cable TV Hook-up	●	●	●	●	●	●	●	●	●	●	
Comfort-Step Bumper	○	○	○	○	○	○	○				
Exterior; TCC™	TCC® Alum.	TCC® Alum.	TCC® Alum.	TCC® Alum.	TCC® Alum.	TCC® Alum.	TCC® Wood	TCC® Wood	TCC® Wood	TCC® Wood	
Fiberglass Siding							●	●	●	●	
Fold Down Bunk	○	○		○		○	●	●	●		
Furnace	25,000 BTU	25,000 BTU	25,000 BTU	25,000 BTU	16,000 BTU	25,000 BTU	16,000 BTU	16,000 BTU	12,000 BTU	12,000 BTU	
Heated, Enclosed & Insulated Holding Tanks	●	●	●	●	●	●	●	●	●★	●★	
High-Gloss Reflections® Fiberglass Siding	●	●	●	●	●	●					
Hot Water Tank (6 US gallon)	●(DSI)	●(DSI)	●(DSI)	●(DSI)	●(DSI)	●(DSI)	●(DSI)	●(DSI)	○	○	
Jacks; HAPPIJAC® Remote Electric	○	○	○	○	○	○	○	○	○	○	
Jacks; HAPPIJAC® Manual	●	●	●	●	●	●	●	●	●	●	
Locking Waterfill Door	●	●	●	●	●	●	●	●	●	●	
Mattress; High Density Foam	○	○	○	○	○	○	○	○	○	●	
Mattress; Premium Spring	●	●	●	●	●	●	●	●	●		
Outside Shower	●	●	●	●	●	●	○	○	○	○	
Power Range Hood w/Light	●	●	●	●	●	●	●	●	●	●	
Power Roof Vent in Bath	●	●	●	●	●	●	●	●	●		
Refrigerator	6 cu. ft.	6 cu. ft.	6 cu. ft.	6 cu. ft.	6 cu. ft.	6 cu. ft.	6 cu. ft.	4 cu. ft.	5 cu. ft.	3 cu. ft.	
Roof Rack & Ladder	●	●	●	●	●	●	●	○	○		
Safety Glass Windows	●	●	●	●	●	●	●	●	●	●	
Shower (Full Fiberglass)	●(Dry)	●	●	●	●	●	●	●			
Slide Awning	○	○	○	○		○					
Slide Out Propane Tray	●										
Sink; Acrylic (Galley)	●	●	●	●	●	●	●	●	●	●	
Sink Cover/Cutting Board	●	●	●	●	●	●	●	●	●	●	
Solar Reflective Windows	●	●	●	●	●	●	●				
Systems Monitor	●	●	●	●	●	●	●				
Water Heater Bypass	●	●	●	●	●	●	●	○	○	○	
WEIGHTS & MEASURES											
Standard Sleeping Capacity	4	5	6	5	4	5	5	5	5	4	
Floor Length	10'6"	9'10"	9'10"	9'3"	9'2"	8'6"	8'10"	8'5"	8'	7'6"	
Exterior Width	96"	96"	96"	96"	96"	96"	96"	93"	96"	81"	
Interior Height	77"	77"	77"	77"	76"	76"	79"	77"	77"	72"	
Fresh Water Capacity (US Gallons / Liters)	38 / 142	38 / 142	38 / 142	38 / 142	32 / 122	38 / 142	33 / 127	33 / 127	20 / 77	20 / 77	
Grey Water Capacity (US Gallons / Liters)	31 / 115	31 / 115	31 / 115	36 / 136	19 / 72	31 / 115	24 / 90	24 / 90			
Black Water Capacity (US Gallons / Liters)	18 / 68	18 / 68	18 / 68	28 / 106	19 / 72	18 / 68	18 / 68	18 / 68	10.5 / 40		
Dry Weight (LBS / Kilograms)	3331 / 1510	3233 / 1466	2750 / 1247	2818 / 1278	2576 / 1169	2699 / 1224	2320 / 1054	1811 / 823	1652 / 750	1140 / 517	
POPULAR OPTIONS											
Air Conditioner	Thermopane Windows		Stove Cover		Amplified TV Antenna		Microwave Oven		Triple Pivot LCD TV Bracket		
Carefree Box Side Awning	Awning, 7 ft. Carefree Rear		Fan-Tastic® Exhaust Vent Fan		AM/FM/CD Player		AM/FM/CD/DVD/MP3 Player		Generator Ready		
● Standard Feature		○ Optional Feature		Blank field indicates option not available.		Note: Not all options are available on all models.		★ Enclosed & Insulated only.		Specifications subject to change without notice	

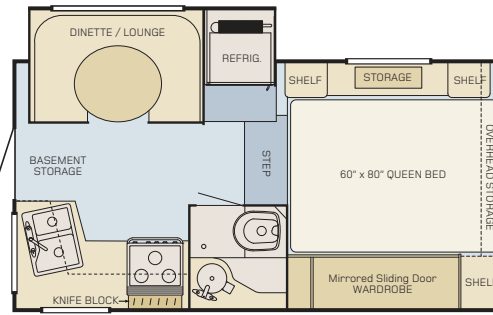
Adventurer takes great care in providing accurate weight information on its units by weighing each camper individually. However, weights in this brochure are approximate. Please check the wardrobe or closet for an accurate unit dry weight with factory installed options at time of manufacture.

A Floor Plan For Every Adventure.



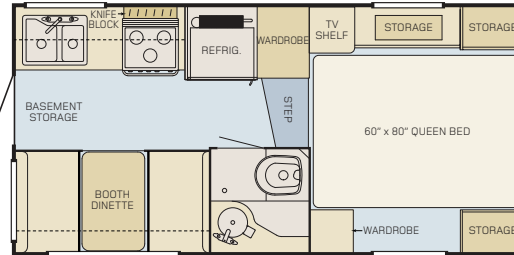
106DBS

Adventurer has poured a lot of effort into creating the 106DBS. Being the largest of the series, this 10'-6" floor plan will require a 1 ton long box pickup, and is chocked full of creature comforts. It features a dry bath/shower area, large dinette/refrigerator slide, storage to spare, and a large galley which makes food preparation a breeze. Be sure you have a look at this camper for the ultimate camping experience.



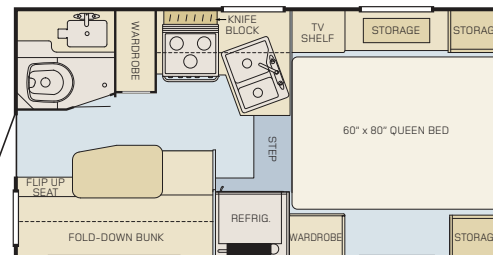
86SBS

The 86SBS is the first and smallest slide unit in our series of truck campers. Start with an 8'-6" length, add a full wall slide with large dinette/lounge, toss in a full bathroom, large closet, and ample space. Top that off with Adventurer's TCC®-Aluminum process and serve with a 3-year limited structural warranty.



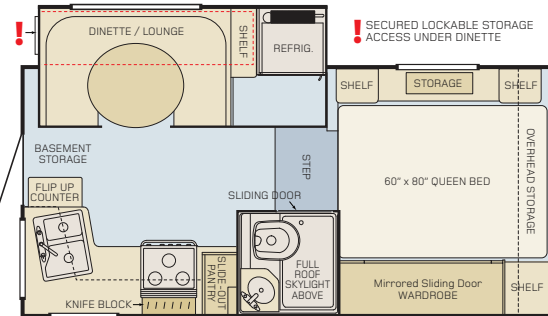
90FWS

First in line for the 9 foot series, is the 90FWS. It features a forward bath, full side dinette, and over 10 cu. ft. of external storage. Designed to fit a 3/4 ton or larger truck, this luxury model's large dinette and ample cab over afford a higher level of comfort



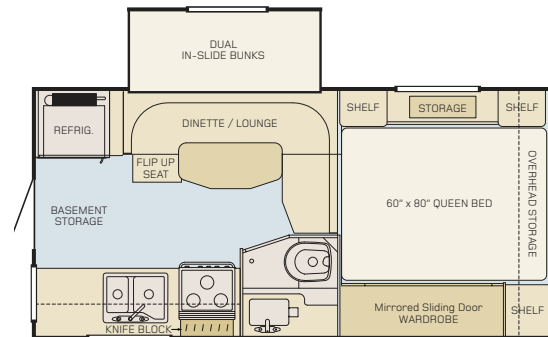
810WS

We designed the 810WS over a quarter century ago. It has been often copied by others in the industry, but only Adventurer can claim the original design. This Luxury Camper has been significantly upgraded with a larger 6 cu. ft. refrigerator. A fully installed generator with short box option is available. Generously sized basement holding tanks aid its all-weather capabilities.



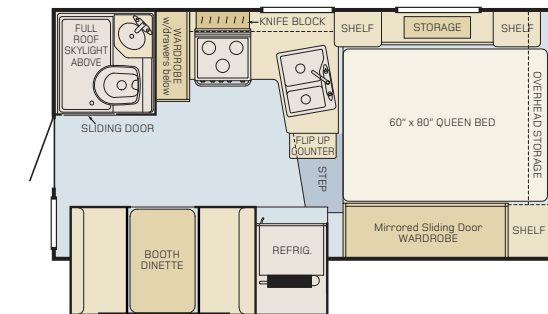
910FBS

The largest in the Adventurer nine foot range is the 910FBS. The slide-out includes a large dinette/lounge, refrigerator, and an optional fold-down dinette bed. Rear and side windows in the galley, further open up and brighten the unit interior. Under the dinette, is a huge secure storage compartment that fits items up 80" long; it can be accessed from inside or outside the slide. The 910 is designed to fit on a long box pickup.



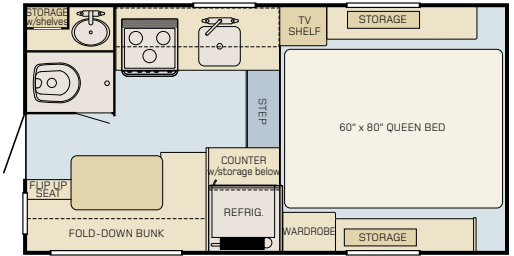
950B

A truck camper first! This floor plan is exclusive to Adventurer and was developed with the family in mind. Full-length dual bunks in the extra deep slide-out provide a comfortable sleeping area with individual windows for increased ventilation. The oversize dinette/lounge area accommodates a large gathering with ease. You'll appreciate the abundant storage areas and plenty of room for everyone in a smaller and lightweight package.



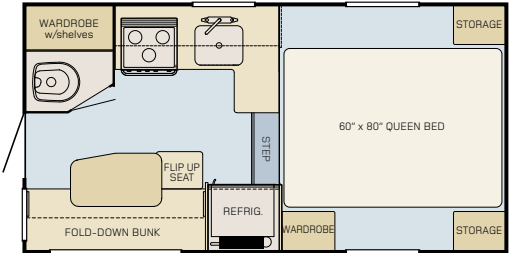
93FDS

Classic in style, the full rear bath is topped with a large, bright, and airy skylight. The full-wall slide includes the dinette and a double door 6 cu. ft. refrigerator thus greatly increasing floor space.



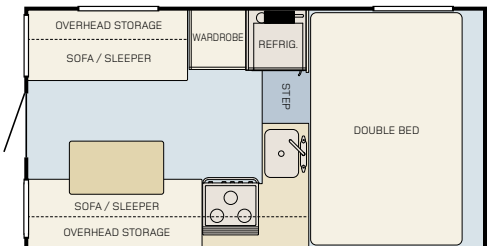
85WS

Next in the 8 foot series is the 85WS. Also, built using our TCC®-Wood construction, this deluxe model sports a full bathroom, generous storage, and even with extras, it is still light and economical. Generously sized basement holding tanks aid its all-weather capabilities.



80W

The 80W is the shortest and most popular contender in the half-ton truck market. It uses our TCC®-Wood construction and boasts a large 5 cu. ft. refrigerator standard. The rear bath, full galley, and ample cabover make for a comfortable and convenient camping experience. The 80W is a value leader in its class.



76R

This camper is the smallest in the Adventurer line and is designed to fit onto the smaller import pickup and get into those tight outdoor places. You can go anywhere as it is lightweight and quite spacious for its size, and uses our TCC®-Wood process. Loaded with features like beautiful maple cabinets, full galley, and space to sleep 4, the 76R provides plenty of room for those weekend get-a-ways. It can be adapted to fit full size 1/2 ton trucks with the factory lift kit.



93FDS

FACTORY TOURS

We invite you to visit our manufacturing facility located in beautiful Yakima, Washington. During your tour, you will see Adventurer Truck Campers being assembled with tremendous skill and pride. Tours are available by appointment. Please call for details.

Your Authorized Dealer:

no coating in dealer box

USA:

Manufacturing, Sales & Marketing,
Customer Services

Adventurer LP

3303 West Washington Avenue
Yakima, Washington 98903
Toll-Free: 866-312-0799

Canada:

Adventurer Mfg. Ltd. Partnership

30440 South Fraser Way
Abbotsford, BC V2T 6L4
Tel: 604-852-5731

www.AMLRV.com



3-YEAR LIMITED STRUCTURAL WARRANTY



All Adventurer products are warranted to be free of defects in materials, or workmanship, for 36 months from date of delivery to the original purchaser and will be repaired or replaced, within this period, at the discretion of the manufacturer at approved service centers.

Any component carrying its own guarantee shall be covered under the conditions and terms of its manufacturer. This warranty does not cover damage caused by misuse, accident, alteration, improper maintenance or rental. Contact your dealer for details.

When purchasing an Adventurer Truck Camper, there are a few important factors to consider:

How much weight will your truck handle? The payload capacity is usually posted in the glove box on most trucks. What is your (GVWR) Gross Vehicle Weight Rating, and (GAWR) Gross Axle Weight Ratings? These are usually posted on the driver's side door post.

As the owner, it is your responsibility not to exceed the weight specifications of your truck when purchasing a truck camper. Always think safety first before loading a camper on your truck. Please consult your dealer, who can help you select aftermarket items designed to aid in proper use of your truck and camper combination.

If you need service on your Adventurer while away and you are not near an Adventurer dealer, just stop in at any reputable RV service center and have them contact Adventurer for authorization to repair your recreational vehicle under warranty.

NOTICE: Adventurer Truck Campers, whose policy is one of continuous improvement, reserves the right to change any of the specifications without prior notice and without incurring any obligation. If you have any questions about our product line, please don't hesitate to contact your nearest dealer or an Adventurer representative.

