

# **BTouring CRUISER**

BY CONQUEST AND TRITON

2010 Class C Motorhomes

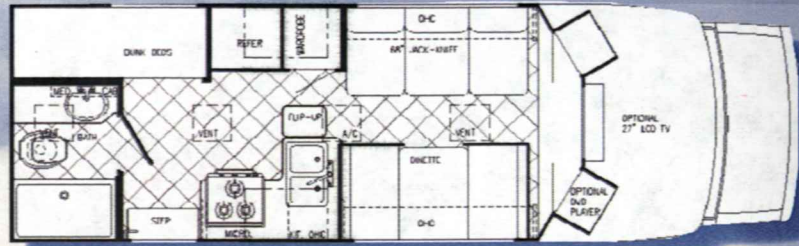
## 2010

**Patented  
Atrium Sunroom**





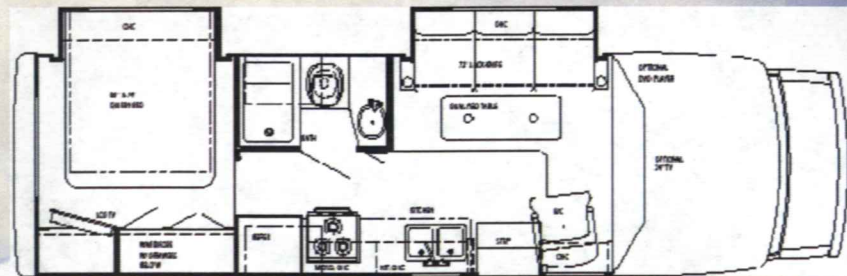
## Floorplans and Specifications



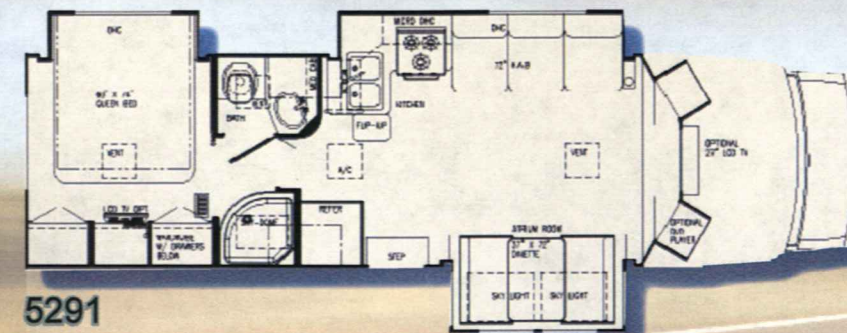
5256



### Optional Comfort Plus Booth Dinette



5272



5291

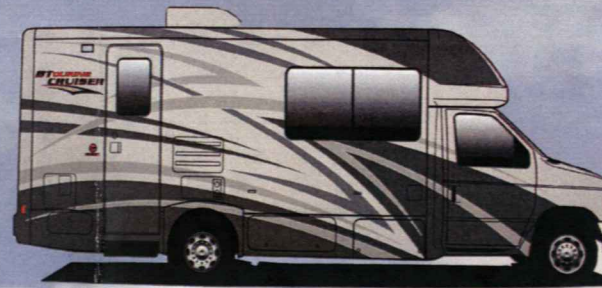
Chassis	Ford.
Engine	V-10
Fuel	55 gal.
GVWR	12,500
Length	25'-5"
Height w/AC	10'-4"
Width	96"
Wheelbase	158"
Fresh	38 Gal.
Grey	24 Gal.
Black	24 Gal./30 Gal.
LP Gas Tank	42 lbs.
Furnace (BTU's)	25,000
Water Heater w/DSI	6 gal.
Ext Storage	TBD

Chassis	Ford/Chevy Workhorse Opt.
Engine	V-10/V-8
Fuel	55/57 gal.
GVWR	14,500/14,050
Length	27'-11"/28'-4"
Height w/AC	10'-4"
Width	96"
Wheelbase	196"/197"
Fresh	38 Gal.
Grey	38 Gal.
Black	38 Gal./30 Gal.
LP Gas Tank	42 lbs.
Furnace (BTU's)	30,000
Water Heater w/DSI	6 gal.
Ext Storage	26.27 cu. ft.

Chassis	Ford/Chevy Worhorse Opt.
Engine	V-10/V-8
Fuel	55/57 gal.
GVWR	14,500/14,050
Length	30'-6"/30'-11"
Height w/C	10'-4"
Width	96"
Wheelbase	208"/209"
Fresh	38 Gal.
Grey	36 Gal.
Black	32 Gal.
LP Gas Tank	42 lbs.
Furnace (BTU's)	30,000
Water Heater w/DSI	6 gal.
Ext Storage	39.41 cu. ft.



TAN



## SILVER



**LUXURY FORD**



## LUXURY CHEVY



Main

## Accent

Carpet

## Emerald



Main



## Accent



Main

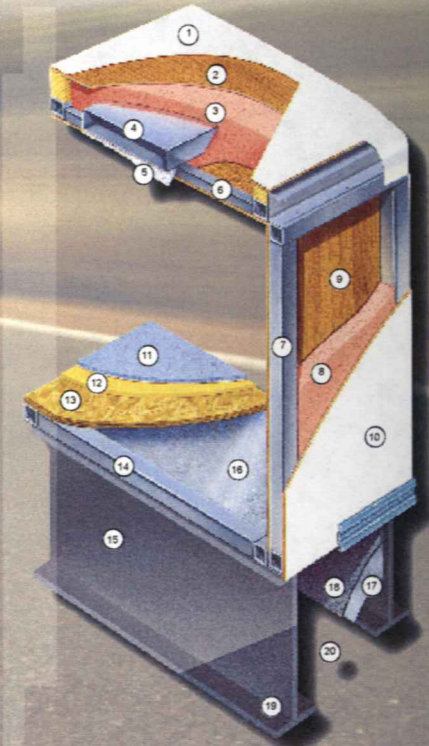
### Accent

Carpet

**Carpet**

## Thyme

## Remington



## TAKE THE TIME TO COMPARE...

and you will see the exceptional value of a Gulf Stream Coach

1. Fiberglass Roof for greater energy efficiency and dependability.
2. Luan Decking for Additional Strength.
3. Molded, High Density EPS (Expanded Polystyrene) Roof Brick Insulation - Provides Consistent Insulation Value as well as Superior Dimensional Rigidity.
4. One-Piece Formed Aluminum Air Conditioning Duct, Completely Surrounded By EPS Insulation.
5. Bubble-Wrapped Foil Insulation Provides Superior Insulation and Helps Prevent Condensation.
6. Rugged Welded Tubular Aluminum Roof Framing.
7. Rugged Heavy-Gauge Tubular Aluminum, Fixture Welded to Form the Sidewall Framing.
8. High-Density EPS Insulation Provides Superior Lamination and Bonding Characteristics and Insures Greater Energy Efficiency.
9. Interior Wall Panels Securely Laminated to Sidewall Framing.
10. G3 Seamless Fiberglass Exterior Vacuum-bond Laminated to Sidewall Framing for Lasting Beauty and Durability.

11. High-Quality Stain-Resistant Carpeting Available in Designer Coordinated Colors.
12. Extra-Thick Padding Under Carpet Provides Extra Comfort and Increases Carpet Durability.
13. Seamless Structurewood Floor Decking Laminated to Steel Floor Structure Assures a Quiet, Long-Lasting Rigid Floor.
14. Heavy-Gauge Tubular Steel Framing, Fixture Welded for Extra Strength and Stability.
15. Heavy-gauge Steel I-Beam Floor Truss System Provides the Strongest Foundation in the Industry.
16. Seamless Layer of Galvanized Steel Securely Attached to the Steel Floor Framing.
17. Galvanized Steel Used to Form Each Storage & Holding Compartment.
18. Durable All-Weather Carpeting Completes Each Accessible Storage Compartment, Providing Extra Protection for Luggage and Valuables.
19. Rust-Prohibitive Paint Coating Applied to All Steel Framing Assures Corrosion and Rust Protection.
20. The Industry's Strongest, Most Spacious Exterior Storage Compartments.



## STANDARDS / OPTIONS

### CHASSIS

- 158" WB, FORD E-45 V-10, 6.8L ENG., 55 GAL FUEL TANK & POWER LOCKS & WINDOWS

### DECOR

- HARD ROCK MAPLE INTERIOR W/M&T DOORS
- FABRIC CEILING
- WINDOW TREATMENTS
- OVERHEAD READING LIGHTS
- FLUORESCENT LIGHT OVER KITCHEN SINK

### EXTERIOR

- SLIDE OUT ROOM (SOFA) (5272)
- SLIDE OUT ROOM (BEDROOM)
- SLIDE OUT ROOM (KITCHEN/SOFA) (5291)
- ATRIUM SLIDE OUT ROOM (DINETTE) (5291)
- WELDED ALUMINUM CAGE
- FIBERGLASS FRONT CAP & WINGS
- LAMINATED FLOOR STEEL FRAME FLOOR W/METAL UNDERBELLY
- (2) SLIDE OUT TOPPERS
- REAR WINDOW
- RADIUS TINTED WINDOWS
- STAINLESS STEEL WHEEL INSERTS
- ACRYLIC ENTRY DOOR ASSIST BAR
- FOAM SEAL & UNDERCOATING
- G3 SEAMLESS FIBERGLASS WALL

### POWER

- AUXILIARY BATTERY
- CONVERTER W/CHARGER & AUTO CHANGE OVER KIT
- GENERATOR PREP
- BATTERY DISCONNECT
- 30' POWER CORD
- 4.0 GENERAC GENERATOR

### HEATING AND COOLING

- DASH A/C
- 15,000 BTU LOW PROFILE DUCTED AC
- 30,000 BTU FURNACE

### BATH

- BI-FOLD SHOWER DOOR & SURROUND (5272)
- GLASS SHOWER DOOR ROUND RADIUS
- POWER BATH VENT

### ELECTRICAL

- TV CABINET
- CD PLAYER
- PLATINUM LIGHTS IN BEDROOM
- MONITOR PANEL
- GENERATOR SWITCH & HOUR METER
- TV ANTENNA W/AMP & BOOST

### FURNISHINGS

- 2-WAY D/P SEATS
- D/S JACK KNIFE SOFT TOUCH SOFA
- SINGLE BARREL CHAIR (PS)(5272)
- DINETTE BOOTH BED (PS) (5291)
- DECORATIVE SOFA PILLOWS

### APPLIANCES

- OTR CONVECTION MICROWAVE W/3-BURNER TOP
- 6 GAL ELECTRONIC IGNITION WATER HEATER W/BYPASS VALVE
- SM. 2-WAY DBL DOOR REFER
- LP GAS TANK
- CARBON MONOXIDE DETECTOR
- LP LEAK DETECTOR

### POPULAR OPTIONS

- ☐ 159" WB, CHEVY VORTEC 6.0 ENGINE, 57 GALLON FUEL TANK
- ☐ 14,500 GVWR, 158" WB, FORD E-45, 6.0 DIESEL ENGINE (5272)
- ☐ **TOURING PACKAGE UPGRADE (REQ)**
  - FIBERGLASS RUNNING BOARDS
  - FIBERGLASS ROOF
  - HARDWOOD STILES
  - ELECTRIC STEP
  - H-DUAL DUCT SYSTEM
  - DELUXE LAMINEX STEP
  - ELECTRIC MAIN AWNING
- ☐ **XL UPGRADE PACKAGE**
  - WOOD DASH
  - FLUORESCENT LIGHTING
  - G-SOUND W/DVD
  - VINYL CEILING
- ☐ **DRIVER CONVENIENCE PKG.**
  - BACKUP MONITOR
  - BACKUP ALARM
  - KEYLESS ENTRY SYSTEM (NA CHEVY)
- ☐ 4.0 ONAN GENERATOR - ENCLOSED
- ☐ 3.6 ONAN W/LP CONVERSION (5272)
- ☐ HEATED HOLDING TANKS (NA W/CSA)
- ☐ REAR LADDER
- ☐ 5000 LB HITCH W/PLUG
- ☐ EXTERIOR PAINTED SKIRT AREA
- ☐ FULL PAINT W/SUPER SLICK EXTERIOR (TAN, SILVER)
- ☐ HEATED & REMOTE MIRRORS
- ☐ LCD COLOR TV IN BEDROOM
- ☐ LCD COLOR TV WITH REMOTE
- ☐ DVD PLAYER (NA W/XL PKG)
- ☐ EMERGENCY START SWITCH
- ☐ (7) FLUORESCENT CEILING LIGHTS
- ☐ DSS PREP
- ☐ 6-WAY POWER SOFT TOUCH D/P SEATS IPO 2-WAY CLOTH SEATS
- ☐ COMFORT PLUS BOOTH DREAM DINETTE IPO DS SOFA (5272)
- ☐ UPGRADE COMFORT PLUS QUEEN MATTRESS
- ☐ RANGE COVER
- ☐ OUTSIDE SHOWER
- ☐ BLACK FLUSH TANK
- ☐ UPGRADED WOOD DASH
- ☐ ROLL GOODS THROUGHOUT
- ☐ CENTRAL VAC SYSTEM

[www.gulfstreamrv.com](http://www.gulfstreamrv.com) / 1.800.289.8787

GULF STREAM

25

1983 - 2008