


2010 Class A Diesel Motorhomes



Yellowstone

BY GULF STREAM®

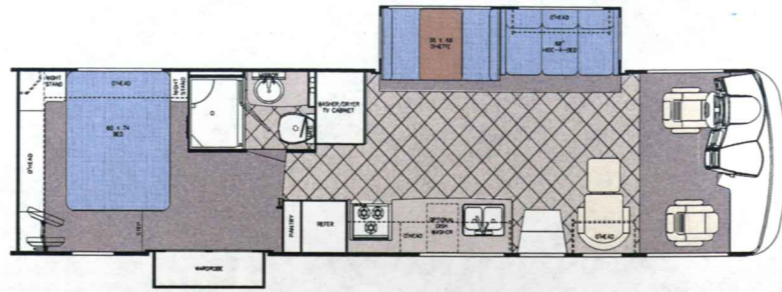
2010

NATURALLY THE BEST VALUE



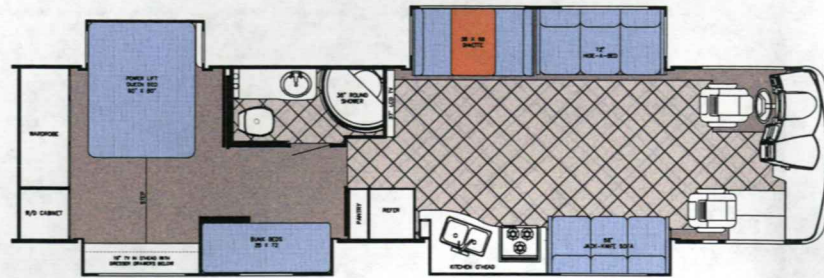
MODEL 356 YSW

Chassis	Freightliner	Wheelbase	228"
Engine	340 Cummins	Fresh	70 gal.
Fuel	100	Grey	75 gal.
GVWR	28,000	Black	75 gal.
Length	38'	LP Gas Tank	115 lbs.
Width	100"	Furnace (BTU's)	40,000/25,000
Height w/AC	12'-3"	Water Heater w/DSI	10 gal.
Interior Height	84"		



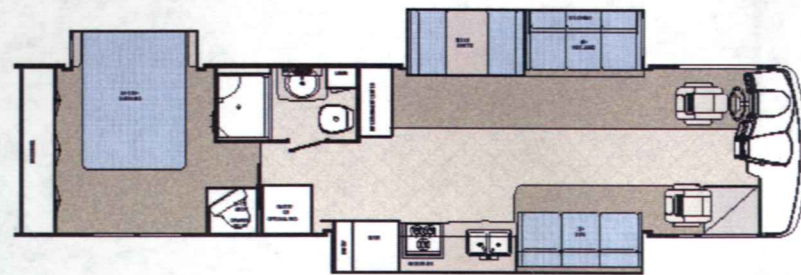
MODEL 8384 YSW

Chassis	Freightliner	Wheelbase	252"
Engine	360 Cummins	Fresh	90 gal.
Fuel	100	Grey	75 gal.
GVWR	32,400	Black	75 gal.
Length	39'-11"	LP Gas Tank	115 lbs.
Width	100"	Furnace (BTU's)	40,000/25,000
Height w/AC	12'-3"	Water Heater w/DSI	10 gal.
Interior Height	84"		



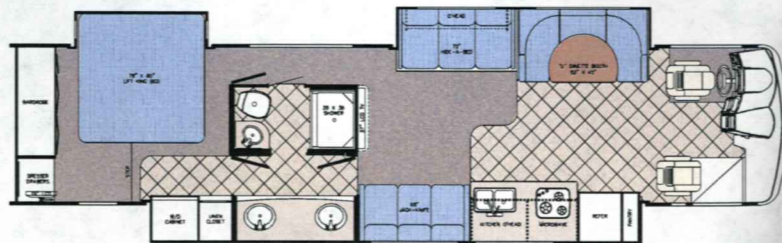
MODEL 8386 YSW

Chassis	Freightliner	Wheelbase	252"
Engine	360 Cummins	Fresh	90 gal.
Fuel	100	Grey	75 gal.
GVWR	32,400	Black	75 gal.
Length	39'-11"	LP Gas Tank	115 lbs.
Width	100"	Furnace (BTU's)	40,000/25,000
Height w/AC	12'-3"	Water Heater w/DSI	10 gal.
Interior Height	84"		



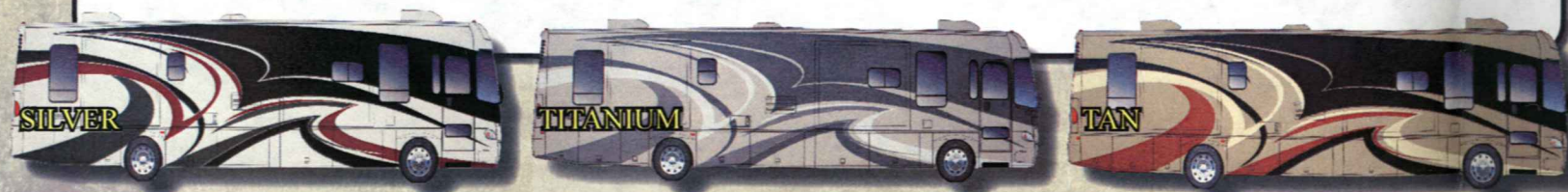
MODEL 40 K

Chassis	Freightliner	Wheelbase	276"
Engine	360 Cummins	Fresh	90 gal.
Fuel	100	Grey	75 gal.
GVWR	32,400	Black	75 gal.
Length	41'-11"	LP Gas Tank	115 lbs.
Width	100"	Furnace (BTU's)	40,000/25,000
Height w/AC	12'-3"	Water Heater w/DSI	10 gal.
Interior Height	84"		



Holding tank capacities (both fresh water and waste water) are volume calculations based on overall tank dimensions. The capacities may differ from published calculations due to the result of tank installation, tank material variation, tank fitting locations and other plumbing variables.

*Estimated length from front to rear cap.



CHASSIS

- 28,000 GVWR 340HP CUMMINS FREIGHTLINER 6-SP ALLISON, REAR RADIATOR (356)
- 32,400 GVWR 360HP CUMMINS FREIGHTLINER, 100 FUEL TANK W/STEEL WHEELS (N/A 324, 325, 356)
- 22,000 GVWR, 300HP CUMMINS (FREIGHTLINER, 60 GAL. FUEL TANK W/ STEEL WHEELS (324)
- 27,000 GVWR, 340 HP CUMMINS FREIGHTLINER, 50 GAL. FUEL TANK W/STEEL WHEELS (325)
- VALUE PACKAGE (REQUIRED)
 - THERMOPANE WINDOWS
 - VINYL CEILING
 - CENTRAL VAC
 - FLUORESCENT LIGHTING
 - POWER AWNING
 - SIDE CAMERAS

EXTERIOR

- "Cradle of Strength" Construction:
 - Welded Steel Sub-Floor Truss System
 - 1-1/2" Tubular Metal Cage Construction on Sidelwalls & Roof
 - Insulated Floors w/Virtually Seamless Structurewood Decking
 - Vacuum-Bond Laminated 2" Thick Sidewall Construction Smooth Filon Fiberglass
- VINYL WRAP AWNING
- PRE-MOLDED FRONT & REAR FIBERGLASS CAPS
- LAMINATED FIBERGLASS ROOF
- SLICK FIBERGLASS EXTERIOR
- FULL BODY PAINT W/DOUBLE CLEAR COAT

HEATING & COOLING

- DASH A/C
- (1) 40,000 & (1) 25,000 BTU FURNACES (356, 8384, 8386, 40K)
- 40,000 BTU DUCTED FURNACE (324/325)
- 13,500 BTU DUCTED ROOF A/C
- ADDITIONAL 13,500 BTU DUCTED ROOF A/C

MISCELLANEOUS

- HEATED HOLDING TANKS
- EXTERIOR SIDEVIEW MIRRORS
- STAINLESS STEEL WHEEL INSERTS
- JACK LEVELING SYSTEM
- 10,000 LB TRAILER HITCH (356, 8384, 8386, 40K)
- 5,000 LB TRAILER HITCH (324)
- 3,500 LB TRAILER HITCH (325)
- INTERIOR S.S. ENTRY ASSIST HANDLE
- CARPETED STORAGE BINS
- MUD FLAPS (FRONT & REAR)
- STEPWELL COVER
- FIRE EXTINGUISHER
- SLIDE OUT TOPPERS
- RALLY HOOK UP
 - HOSE FAUCET
 - PAPER TOWEL ROLL DISPENSER
 - CABLE TV HOOKUP
 - TELEPHONE HOOKUP
- REAR LADDER

ELECTRICAL

- OVERHEAD DEFROST BLOWER
- COLOR BACK-UP MONITOR W/AUDIO
- WALL SWITCHES FOR ALL CEILING LIGHTS
- AM/FM/CASSETTE STEREO W/CD PLR & SPEAKERS
- EMERGENCY START SWITCH IN DASH
- MAP LIGHTS
- ANTENNA W/AMPLIFIER, BOOSTER & 2 JACKS
- CB ANTENNA
- (1) PHONE JACK IN KITCHEN & (1) IN BEDROOM

- AUTO DOUBLE ELECTRIC STEP
- 32" LCD TV FRONT OVERHEAD (324, 325)
- 32" LCD FEATURE WALL (356, 8384, 8386, 40K)
- DVD READY
- DSS PREP (TRIPOD)
- LIGHTED EXTERIOR STORAGE BINS

BATH

- POWER VENT IN COMMODE & SHOWER AREA
- SKY DOME IN BATH
- SHOWER W/GLASS DOOR & SURROUND
- PORCELAIN STOOL W/SPRAYER
- HOLDING TANK FLUSH KIT

DÉCOR

- MIRRORED MEDICINE CABINET
- PRIVACY CURTAIN
- CORIAN KITCHEN COUNTERTOP
- TILE BACK SPLASH
- LINOLEUM IN KITCHEN, BATH & HALL
- PLEATED SHADES
- DECORATIVE CROWN CEILING MOLDING
- MAPLE HARDWOOD INTERIOR

FURNISHINGS

- 2-TONE COPILLOT SEAT
- 2-TONE PILOT SEAT
- 3-POINT SEAT BELTS
- SOFT TOUCH EURO RECLINER & OTTOMAN (PS) (356, 324)
- 60 X 74 BED W/DELUXE INNERSPRING MATTRESS (N/A 324, 8384, 8386)
- 60 X 80 BED W/DELUXE INNERSPRING MATTRESS
- FS BUFFET DINETTE W/(2) RESIDENTIAL DINING CHAIRS (324, 325)
- COMFORT PLUS DINETTE BOOTH BED (356, 8384, 8386)
- VANITY BENCH (324)
- (2) THROW PILLOWS (PER SOFA) & (2) BEDROOM PILLOWS
- SOFT TOUCH J-KNIFE SOFA (PS)(8384)
- BUNKS (8384)

APPLIANCES

- LARGE 2-WAY REFER W/ICEMAKER & PURIFIER
- MONITOR PANEL
- 30" OTR CONVECTION MICROWAVE
- 3-BURNER TOP
- FLUSH STOVE TOP COVER
- 10 GAL DSI WATER HEATER
- 115# LP GAS BOTTLE (356, 8384, 8386)
- 85# LP GAS BOTTLE (324, 325)
- CARBON MONOXIDE DETECTOR
- LP GAS LEAK DETECTOR
- PREP FOR WASHER/DRYER (N/A 324)

POWER

- (2) 12 VOLT AUXILIARY BATTERIES
- BATTERY DISCONNECT
- 50 AMP SERVICE W/AUTO TRANSFER SWITCH & 80 AMP CONVERTOR
- 7.5 GENERAC DIESEL GENERATOR

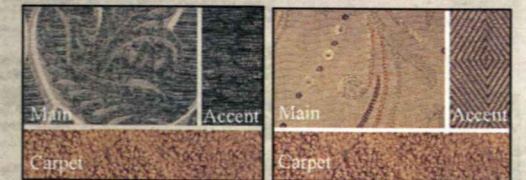
POPULAR OPTIONS

- ECONOMIZER PACKAGE
- 2000 WATT INVERTER W/AUTO START
- 8.0 ONAN QUIET DIESEL GENERATOR
- 15,000 BTU DUCTED A/C IPO 13,500 BTU A/C
- 3-SPEED FANTASTIC ATTIC FAN
- HEATED & REMOTE MIRRORS
- POWER SUN VISOR
- SURGE PROTECTION
- CERAMIC TILE
- 19" LCD COLOR TV IN BEDROOM
- 2 FLIP DOWN DVD PLAYERS (8384)
- DELUXE AIR HORNS
- SURROUND SOUND SYSTEM W/DVD PLAYER
- GPS NAVIGATION SYSTEM & MP3 PLAYER
- KVH SATELLITE DISH
- REAR ROCKGUARD
- 2-TONE 6-WAY POWER PILOT SEAT
- 2-TONE 6-WAY POWER COPILLOT SEAT
- COMFORT PLUS BOOTH DINETTE IPO FS BUFFET (324)
- F/S BUFFET DINETTE W/(2) RESIDENTIAL DINING CHAIRS IPO BOOTH DINETTE
- (2) FOLDING CHAIRS
- FIREPLACE (356, 8386, 40K)
- SIDE BY SIDE REFER W/ICEMAKER & PURIFIER (NA 324)
- COMBO WASH/DRY W/OUTSIDE VENT (NA 324 FRED)
- CENTRAL VAC



Midnight

Remington



Emerald

Thyme

FEATURES & BENEFITS

- CUMMINS ISB 300HP DIESEL ENGINE
620 LBS.-FT. OF TORQUE - 22.5" TIRES (324)
- CUMMINS ISB 340HP DIESEL ENGINE
660 LBS.-FT. OF TORQUE - 22.5" TIRES
- 22,000 GVWR FREIGHTLINER 60 GAL. FUEL (324)
- 27,000 GVWR FREIGHTLINER 80 GAL. FUEL (325)
- 55 - DEGREE WHEEL CUT
- 60" PARABOLIC LEAF SPRING /
SACHS SHOCKS
- BOSCH DISC BRAKES W/4-WHEEL ABS
- LOWERED CENTER OF GRAVITY
- LOWERED ENGINE MOUNT
- 15,000 MILE OIL CHANGE INTERVAL
- 5-YEAR / 100,000-MILE COOLANT
- 400%-LONGER-LIFE TRANSMISSION FLUID
- READILY IDENTIFIABLE SERVICE POINTS
- 5 SPEED ALLISON TRANSMISSION (300 CUMMINS)
- 6 SPEED ALLISON TRANSMISSION (340 CUMMINS)
- HARDWOOD CABINETS
- SEAMLESS FIBERGLASS ROOF
- GALVANIZED STEEL COMPARTMENTS
- FLUSH FLOOR SLIDE OUT ROOMS
- 13,500 BTU H-DUCTED ROOF A/C
- 40,000 BTU FURNACE
- CORIAN KITCHEN COUNTERTOPS
- 30" CONVECTION OVEN
- 3-BURNER RANGE TOP
- LARGE DOUBLE DOOR 2-WAY REFRIGERATOR
- 10 GALLON WATER HEATER
- 7.5 DIESEL QUIET GENERATOR
- JACK LEVELING SYSTEM
- COLOR BACK-UP MONITOR W/SIDEVIEW
CAMERAS
- 5,000 LBS. HITCH (N/A 325)
- ELECTRIC IGNITION WATER HEATER
W/BY-PASS VALVE
- 85# LP GAS BOTTLE

- LP GAS LEAK DETECTOR
- CARBON MONOXIDE DETECTOR
- ARCTIC PACKAGE
- HEATED HOLDING TANKS,
• REAR LADDER

POPULAR OPTIONS

- 13,500 BTU DUCTED REAR A/C
- 3-SPEED FANTASTIC FAN
- 20" FLAT SCREEN BEDROOM
TV
- HEATED / REMOTE MIRRORS
- ECONOMIZER PACKAGE
- GPS NAVIGATION SYSTEM

FRONT ENGINE DIESEL

FRED FACTS

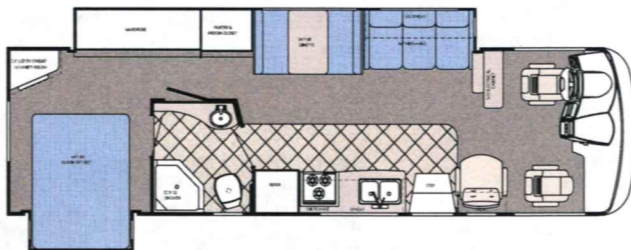
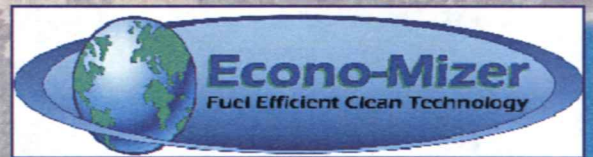
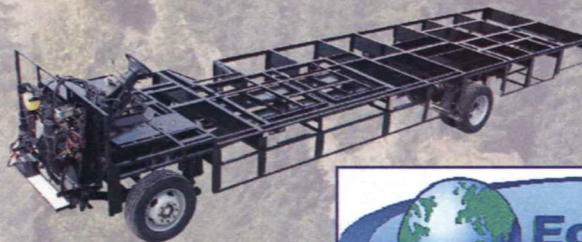
The real advantages of Front Engine Diesel.

PERFORMANCE • Front Engine configuration uses natural motion and ram air to cool the engine allowing the valuable horsepower to concentrate on powering the coach, not cooling the engine.

EFFICIENCY • The Front Engine Diesel chassis touts a fuel economy of an estimated 12-13 MPG *

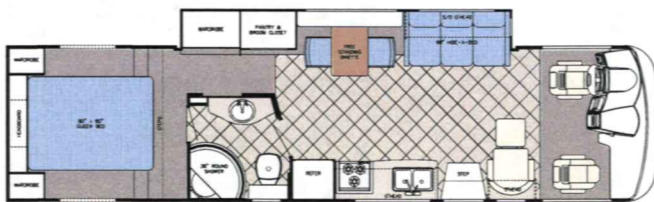
*actual mileage per gallon may vary due to road conditions, terrain, driver habits, cargo weight, or towing.

STABILITY • By moving the Engine to the front of the unit and by increasing the wheelbase by 20' we create a more comfortable ride. This also eliminates porpoising (the forward and aft rocking caused by the engine being placed in the rear of a unit with a smaller wheelbase) A more stable ride means less wear on the unit and on the driver.



MODEL 324 FRED

Chassis	Freightliner	Wheelbase	228"
Engine	300 Cummins	Fresh	57 gal.
Fuel	60	Grey	50 gal.
GVWR	22,000	Black	50 gal.
Length	33'	LP Gas Tank	85 lbs.
Width	100"	Furnace (BTU's)	40,000
Height w/AC	12'-0"	A/C Front (BTU's)	13,500
Interior Height	84"	Water Heater w/DSI	10 gal.



MODEL 325 FRED

Chassis	Freightliner	Wheelbase	228"
Engine	340 Cummins	Fresh	50 gal.
Fuel	50	Grey	50 gal.
GVWR	27,000	Black	50 gal.
Length	35'-6"	LP Gas Tank	85 lbs.
Width	100"	Furnace (BTU's)	40,000
Height w/AC	12'-0"	A/C Front (BTU's)	13,500
Interior Height	84"	Water Heater w/DSI	10 gal.

Holding tank capacities (both fresh water and waste water) are volume calculations based on overall tank dimensions. The capacities may differ from published calculations due to the result of tank installation, tank material variation, tank fitting locations and other plumbing variables.

*Estimated length from front to rear cap.

VISIT
www.GULFSTREAMRV.com

OR CALL
1-800-289-8787