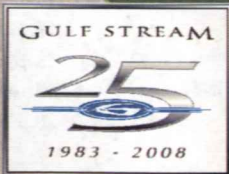


Yellowstone

2010

Industry
Exclusive
Residential
Loft

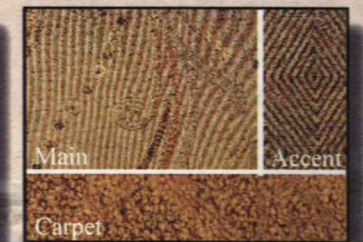




EMERALD



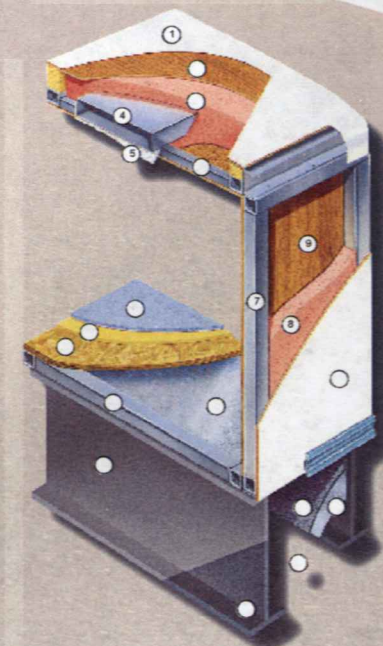
REMINGTON



THYME

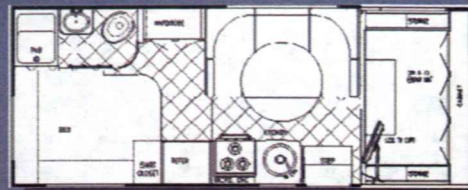


OPTIONAL GLITZ PACKAGE



Floorplans and Specifications

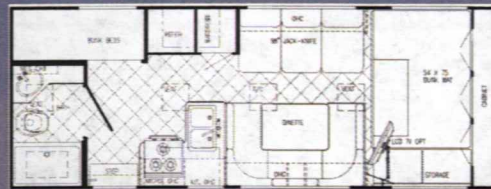
Holding tank capacities (both fresh water and waste water) are volume calculations based on overall tank dimensions. The capacities may differ from published calculations due to the result of tank installation, tank material variation, tank fitting locations and other plumbing variables.



6237Y

Sleeps 6!

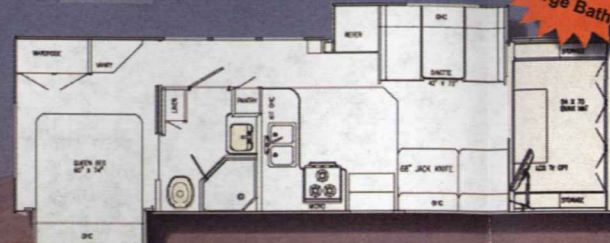
| | |
|--------------------|---------------------------|
| Chassis | Ford/Chevy Workhorse Opt. |
| Engine | V-10/V-8 |
| Fuel | 55/57 gal. |
| GVWR | 12,500/12,300 |
| Length | 23'7"/24' |
| Height w/AC | 11'-3" |
| Width | 101" |
| Wheelbase | 158"/159" |
| Fresh | 40 Gal. |
| Grey | 27 Gal. |
| Black | 27 Gal. |
| LP Gas Tank | 42 lbs. |
| Furnace (BTU's) | 25,000 |
| Water Heater w/DSI | 6 gal. |
| Ext Storage | 87.84 cu. ft. |



6256Y

New Floorplan!

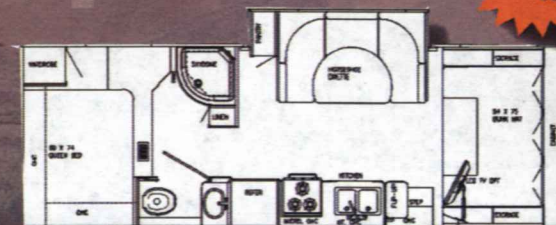
| | |
|--------------------|---------|
| Chassis | Ford |
| Engine | V-10 |
| Fuel | 55 gal. |
| GVWR | 12,500 |
| Length | 25'7" |
| Height w/AC | 11'-3" |
| Width | 101" |
| Wheelbase | 158" |
| Fresh | 38 Gal. |
| Grey | 24 Gal. |
| Black | 24 Gal. |
| LP Gas Tank | 42 lbs. |
| Furnace (BTU's) | 25,000 |
| Water Heater w/DSI | 6 gal. |
| Ext Storage | TBD |



63110Y

Side Aisle and Large Bath!

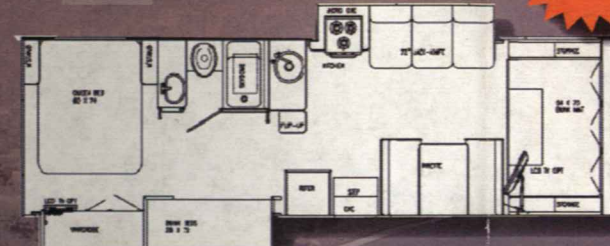
| | |
|--------------------|---------------------------|
| Chassis | Ford/Chevy Workhorse Opt. |
| Engine | V-10/V-8 |
| Fuel | 55/57 gal. |
| GVWR | 14,500/14,050 |
| Length | 32'-4"/32'-10" |
| Height w/AC | 11'-5" |
| Width | 101" |
| Wheelbase | 209'/208" |
| Fresh | 34 Gal. |
| Grey | 36 Gal. |
| Black | 36 Gal. |
| LP Gas Tank | 42 lbs. |
| Furnace (BTU's) | 30,000 |
| Water Heater w/DSI | 6 gal. |
| Ext Storage | 89.33 cu. ft. |



6268Y

HUGE Storage!

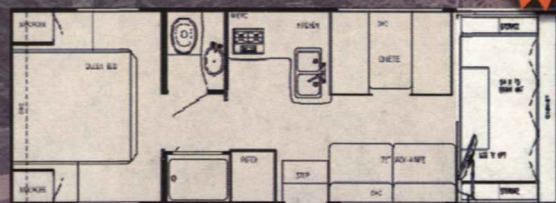
| | |
|--------------------|---------------------------|
| Chassis | Ford/Chevy Workhorse Opt. |
| Engine | V-10/V-8 |
| Fuel | 55/57 gal. |
| GVWR | 14,500/14,050 |
| Length | 28'3"/28'-9" |
| Height w/AC | 11'-6" |
| Width | 101" |
| Wheelbase | 196'/197" |
| Fresh | 34 Gal. |
| Grey | 36 Gal. |
| Black | 36 Gal. |
| LP Gas Tank | 42 lbs. |
| Furnace (BTU's) | 25,000 |
| Water Heater w/DSI | 6 gal. |
| Ext Storage | 137.01 cu. ft. |



63111Y

Bunks!

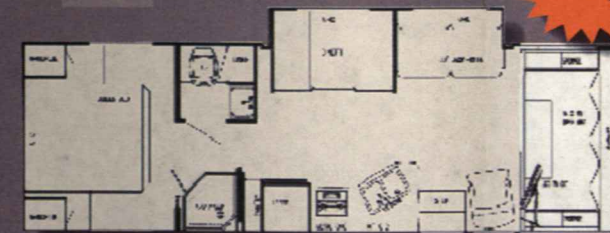
| | |
|--------------------|---------------------------|
| Chassis | Ford/Chevy Workhorse Opt. |
| Engine | V-10/V-8 |
| Fuel | 55/57 gal. |
| GVWR | 14,500/14,050 |
| Length | 31'11"/32'6" |
| Height w/AC | 11'-6" |
| Width | 101" |
| Wheelbase | 209'/208" |
| Fresh | 38 Gal. |
| Grey | 36 Gal. |
| Black | 36 Gal. |
| LP Gas Tank | 42 lbs. |
| Furnace (BTU's) | 30,000 |
| Water Heater w/DSI | 6 gal. |
| Ext Storage | 82.2 cu. ft. |



6280Y

Under 30'!

| | |
|--------------------|---------------------------|
| Chassis | Ford/Chevy Workhorse Opt. |
| Engine | V-10/V-8 |
| Fuel | 55/57 gal. |
| GVWR | 12,500/12,300 |
| Length | 29'7"/30' |
| Height w/AC | 11'-3" |
| Width | 101" |
| Wheelbase | 196'/197" |
| Fresh | 40 Gal. |
| Grey | 36 Gal. |
| Black | 27 Gal. |
| LP Gas Tank | 42 lbs. |
| Furnace (BTU's) | 25,000 |
| Water Heater w/DSI | 6 gal. |
| Ext Storage | 61.98 cu. ft. |



6316Y

Super Slide!

| | |
|--------------------|---------------------------|
| Chassis | Ford/Chevy Workhorse Opt. |
| Engine | V-10/V-8 |
| Fuel | 55/57 gal. |
| GVWR | 14,500/14,050 |
| Length | 31'7"/32' |
| Height w/AC | 11'-3" |
| Width | 101" |
| Wheelbase | 209'/208" |
| Fresh | 40 Gal. |
| Grey | 36 Gal. |
| Black | 27 Gal. |
| LP Gas Tank | 42 lbs. |
| Furnace (BTU's) | 30,000 |
| Water Heater w/DSI | 6 gal. |
| Ext Storage | 64.81 cu. ft. |

TAKE THE TIME TO COMPARE...

and you will see the exceptional value of a Gulf Stream Coach

1. TPO roof for greater energy efficiency and dependability.
2. Luan Decking for Additional Strength.
3. Molded, High Density EPS (Expanded Polystyrene) Roof Brick Insulation - Provides Consistent Insulation Value as well as Superior Dimensional Rigidity.
4. One-Piece Formed Aluminum Air Conditioning Duct, Completely Surrounded By EPS Insulation.
5. Bubble-Wrapped Foil Insulation Provides Superior Insulation and Helps Prevent Condensation.
6. Rugged Welded Tubular Aluminum Roof Framing.
7. Rugged Heavy-Gauge Tubular Aluminum, Fixture Welded to Form the Sidewall Framing.
8. High-Density EPS Insulation Provides Superior Lamination and Bonding Characteristics and Insures Greater Energy Efficiency.
9. Interior Wall Panels Securely Laminated to Sidewall Framing.
10. G3 Seamless Fiberglass Exterior Vacuum-bond Laminated to Sidewall Framing for Lasting Beauty and Durability.
11. High-Quality Stain-Resistant Carpeting Available in Designer Coordinated Colors.
12. Extra-Thick Padding Under Carpet Provides Extra Comfort and Increases Carpet Durability.
13. Seamless Structurewood Floor Decking Laminated to Steel Floor Structure Assures a Quiet, Long-Lasting Rigid Floor.
14. Heavy-Gauge Tubular Steel Framing, Fixture Welded for Extra Strength and Stability.
15. Heavy-gauge Steel I-Beam Floor Truss System Provides the Strongest Foundation in the Industry.
16. Seamless Layer of Galvanized Steel Securely Attached to the Steel Floor Framing.
17. Galvanized Steel Used to Form Each Storage & Holding Compartment.
18. Durable All-Weather Carpeting Completes Each Accessible Storage Compartment, Providing Extra Protection for Luggage and Valuables.
19. Rust-Prohibitive Paint Coating Applied to All Steel Framing Assures Corrosion and Rust Protection.
20. The Industry's Strongest, Most Spacious Exterior Storage Compartments.

*Estimated length from front to rear cap.

Chassis

- 12,500 GVWR, 158" WB, FORD E-350 V-10 ENGINE (6237, 6280)
- 158" WB, FORD E-450, V-10, 6.8L, 55 GAL FUEL TANK & POWER LOCKS & WINDOWS (6268, 63110, 63111, 6316)

Exterior

- G3 SEAMLESS FIBERGLASS EXTERIOR WALLS
- RADIUS TINTED WINDOWS
- REAR WINDOW (6237)
- SIDE CABOVER WINDOWS
- KITCHEN WINDOW
- BASEMENT STORAGE
- SPRING CLIPS FOR STORAGE DOORS
- UNDERCOAT PAINT
- SINGLE ELECTRIC STEP (6268, 63110, 63111)
- BUMPER COVER
- MAG LOOK WHEEL COVERS
- REAR MUD FLAPS
- SLIDE OUT TOPPER (6268, 6316)
- SLIDE OUT TOPPERS (63110, 63111)
- SLIDE OUT ROOM (SOFA, DIN) (6316)
- SLIDE OUT ROOM (DINETTE) (6268)
- SLIDE OUT ROOM (REFER/DIN) (63110)
- SLIDE OUT ROOM (BED) (63110)
- SLIDE OUT ROOM (SOFA/STOVE) (63111)
- SLIDE OUT ROOM (BUNK BEDS/ WARDROBE) (63111)
- WELDED ALUMINUM PERIMETER FRAME
- LAMINATED DUCTED ROOF (N/A 6237, 6280)
- LAMINATED STEEL FRAME FLOOR W/METAL UNDERBELLY
- TPO ROOF

Décor

- ROLL GOODS THROUGHOUT COACH
- KITCHEN COUNTERTOP EXTENSION

- MAPLE CABINET DOORS
- HARDWOOD STILES/TRIM
- INTERIOR UPGRADE FABRICS
- CARPET IN BEDROOM (N/A 6237)

Heating & Cooling

- DASH AC
- 25,000 BTU FURNACE (6237, 6268, 6280)
- 30,000 BTU FURNACE (63110, 63111, 6316)
- DUCTED ROOF A/C (N/A 6237, 6280)

Electrical

- TV TRAY IN BEDROOM (6280, 6316)
- MONITOR PANEL
- CABLE TV READY
- CD PLAYER
- TV ANTENNA W/ AMP BOOST
- TV JACK IN BEDROOM (N/A 6237)
- FLUORESCENT LIGHT OVER KITCHEN SINK
- CEILING LIGHT WALL SWITCH

Bath

- POWER BATH VENT
- SKYDOME
- GLASS SHOWER DOOR (6268, 6280, 6316, 63110)
- SHOWER CURTAIN (6237, 63111)

Power

- BATTERY DISCONNECT
- AUXILIARY BATTERY
- CONVERTER WITH CHARGER & AUTO CHANGE OVER
- GENERATOR PREP

Furnishings

- PLEATED WINDOW SHADES
- INSIDE HANDRAIL
- PRIVACY CURTAIN IN BEDROOM (6237, 6268)
- PLEATED PRIVACY DOOR (6280, 63110, 63111, 6316)

- SIDE CABOVER TV CABINET
- DINETTE BOOTH BED
- QUEEN BED W/ INNERSPRING MATTRESS (N/A 6237)
- 2-WAY DR/PASS SEATS W/ARM REST
- J-KNIFE SOFA (NA 6237, 6268)
- SINGLE BARREL CHAIR (6316)
- RESIDENTIAL LOFT PACKAGE
- DECORATIVE SOFA PILLOWS

Appliances

- 6 GAL ELECTRONIC IGNITION WATER HEATER W/BY-PASS VALVE
- LP GAS TANK
- CARBON MONOXIDE DETECTOR
- LP LEAK DETECTOR
- SMALL 2-WAY DOUBLE DOOR REFER
- 3-BURNER RANGE W/OVEN
- MICROWAVE OVEN

Popular Options

- 14,050 GVWR, 159" WB, CHEVY VORTEC 6.0 ENGINE (6316, 63110, 63111)
- 14,500 GVWR 158" WB, FORD E-450, 6.0 DSL ENGINE (6237, 6280, 6316)

LUXURY PACKAGE

- DREAM DINETTE
- COMFORT PLUS DINETTE
- UPGRADED LIGHTING
- G-SOUND
- EXTERIOR ACRYLIC GRAB HANDLE
- LIGHTED TRUNKS
- ALUMINUM BED BASE
- RANGE COVER
- UPGRADED DASH
- SOFT TOUCH VINYL CEILING

YELLOWSTONE PACKAGE

- 4.0 GENERAC GENERATOR - ENCLOSED
- 13,500 BTU ROOF AIR CONDITIONER
- ELECTRIC AWNING

- EMERGENCY START
- 4.0 ONAN GENERATOR - ENCLOSED
- 3.6 ONAN GENERATOR W/LP CONVERSION
- 15,000 BTU A/C IPO 13,500 A/C
- HEATED HOLDING TANKS (N/A W/CSA)
- STAINLESS STEEL WHEEL LINERS
- HEATED & REMOTE MIRRORS
- FULL BODY PAINT W/ VINYL GRAPHICS & SLICK FIBERGLASS WALLS
- HITCH W/PLUG
- REAR WINDOW (NA 6237)
- LADDER
- ALUMINUM RUNNING BOARDS
- FIBERGLASS RUNNING BOARDS
- EXTERIOR SKIRT PAINT
- OUTSIDE RINSE & WASH SPRAY SYSTEM (N/A 6237, 6268)
- BLACK FLUSH TANK
- BACK UP MONITOR
- 3-SPEED FANTASTIC FAN
- (7) FLUORESCENT LIGHTS
- DSS PRE-WIRE
- OUTSIDE ENTERTAINMENT CENTER
- PHONE JACK
- DUAL FLIP DOWN TV'S IN BUNKS (63111)
- REAR FLAT SCREEN COLOR LCD TV (63110, 63111)
- FRONT LCD TV

- 6-WAY POWER OPTIMA D/P SEATS IPO CLOTH (NA CHEVY)
- SOFT TOUCH J-KNIFE SOFA IPO DINETTE (6280)
- DELUXE COMFORT PLUS MATTRESS (N/A 6237)
- LARGE 2-WAY DOUBLE DOOR REFER
- CENTRAL VAC SYSTEM