

**OPTIONAL FULL-BODY  
 PAINT GRAPHICS**

**STANDARD GRAPHICS**

*Canyon*



*Cabernet Gold*



*Platinum*



*Sage Mist*



*Champagne Star*



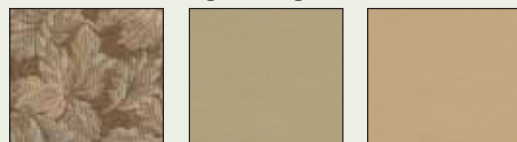
*White Pearl*



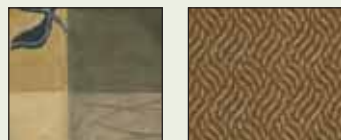
**INTERIOR DÉCORS**

*Canyon*

Living/Dining Room



Bedroom



*Sage Mist*

Living/Dining Room



Bedroom



*Cyberspace Café*

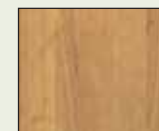
Living/Dining Room



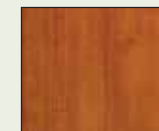
Bedroom



*Wood Finishes*



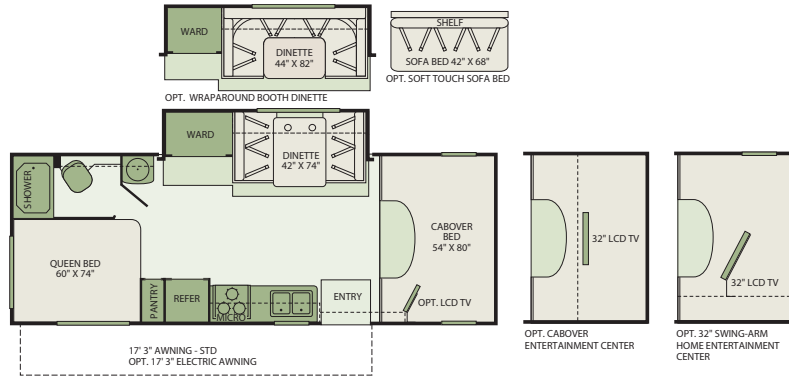
Symphony Cherry



Bijoux Cherry

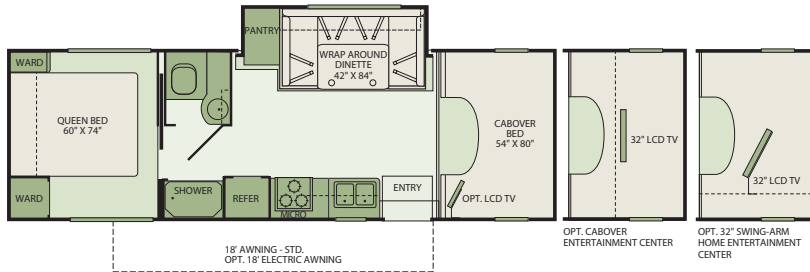
## FLOOR PLANS

25G



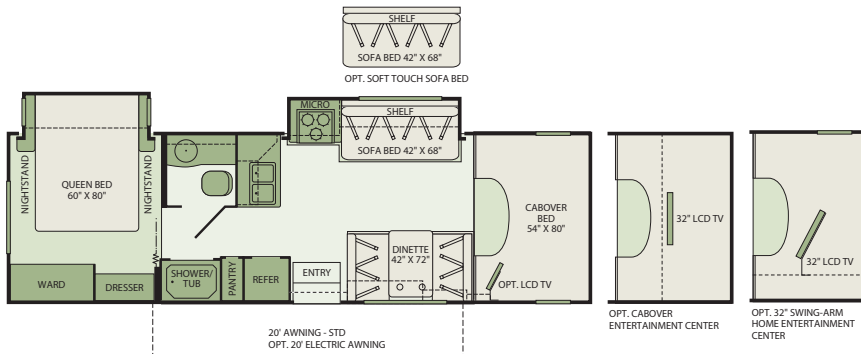
Interior Storage Capacity: 102 cu. ft.  
Exterior Storage Capacity: 100 cu. ft.

28Y



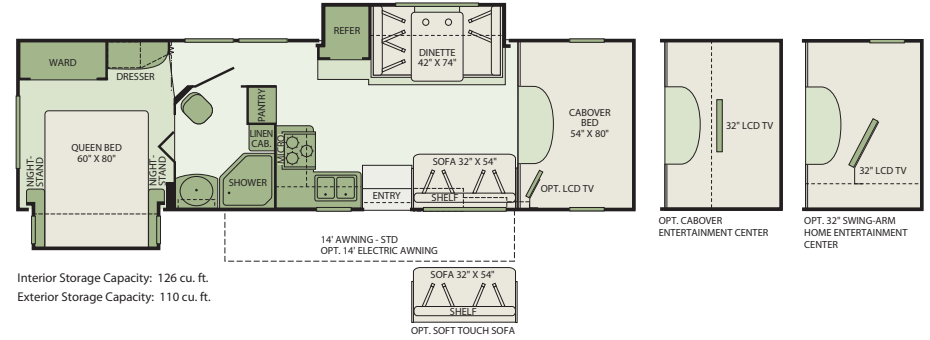
Interior Storage Capacity: 93 cu. ft.  
Exterior Storage Capacity: 144 cu. ft.

30U



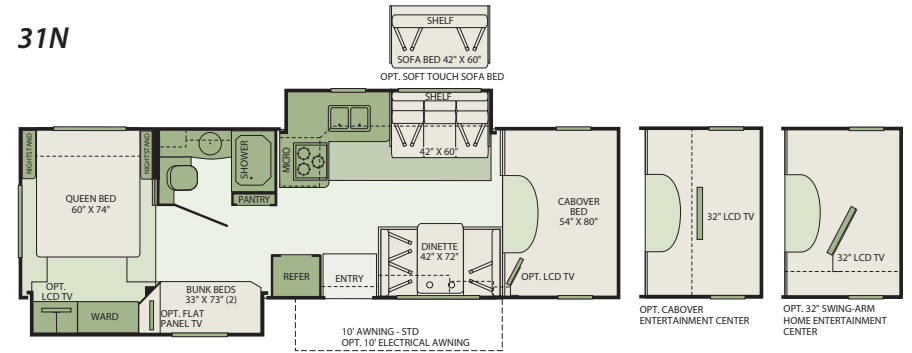
Interior Storage Capacity: 130 cu. ft.  
Exterior Storage Capacity: 101 cu. ft.

31M



Interior Storage Capacity: 126 cu. ft.  
Exterior Storage Capacity: 110 cu. ft.

31N



Interior Storage Capacity: 119 cu. ft.  
Exterior Storage Capacity: 111 cu. ft.

31W



Interior Storage Capacity: 92 cu. ft.  
Exterior Storage Capacity: 124 cu. ft.

## STANDARD FEATURES

### INTERIOR THROUGHOUT

- Complete TuffPEX Plumbing System
- 12V Water Pump, Demand Operation
- 13,000 Btu Conventional Air Conditioner (25G)
- 15,000 Btu Ducted Air Conditioner w/Chill Grille (28Y, 31M, 31N, 30U)
- 30,000 Btu Furnace, Wall Mounted Thermostat
- Dual 20,000 Btu Furnaces (31N)
- 6 Gallon Propane Water Heater w/Electronic Ignition
- Arched Hardwood Overhead Cabinet Doors w/Raised Panel and Hidden Hinges
- Ozite-Lined Shelves in Overhead Cabinets
- Auxiliary Battery w/Disconnect Switch
- Vinyl Flooring Throughout (Except Bedroom and Slide-Out Applications)
- Deluxe Roller Bearing, Full Extension Drawer Guides and Transit-Ship Locks
- Water Pump Controller with On/Off Switches at Galley, Lavvy and Service Compartment
- Quality Constructed Furniture by Flexsteel®
- Water Heater Bypass Valve Fresh Water System Winterization
- Central Monitor Panel
- GFI Circuit Protection
- AC/DC Load Center w/12V Converter/Battery Charger
- Padded Vinyl Ceilings
- Stainless Steel Appliances

### DRIVER CONVENIENCE

- 3 Point Seat Belts at Driver and Front Passenger Seats
- In-Dash AM/FM/Radio w/CD Player and 4 Speakers
- Power Windows and Door Locks
- 54" x 80" Cabover Bed w/Privacy Curtain, Roof Vent and Sliding Side Windows
- Cabover Bunk Ladder
- Driver/Front Passenger Air Bag Supplemental Restraint System
- Cockpit Area w/Tilt Wheel, Cruise Control, Dome Light, Beverage Cup Holders, Map Pocket
- Auxiliary Emergency Start Assist Switch on Dash
- Soft Touch Driver/Passenger Seat Covers
- Custom Dash Appliqués

### LIVING ROOM

- Ceiling Lights w/Wall Switches (Entry and Bath)
- Day/Night Pleated Shades
- Dinette w/2 Cup Holders, Convertible for

Sleeping & Hinged Seat w/Strut for Easy Storage Access (Select Models)

- Sofa Bed w/Armrests (Select Models)
- Pedestal Sofa Table w/Locking Legs

### GALLEY

- Laminate Countertops w/Solid Surface Edge
- Stainless Steel Range w/High Output/Piezo Igniter and Oven & Stainless Steel Cover
- Decor Wall Border
- Dometic® 8 cu.ft. Refrigerator/Freezer
- Flip-Up Countertop Extension (Select Models)
- Kitchen Convenience Package: Spice Rack, Paper Towel Holder, Sink Cover/Cutting Board (Select Models)
- Stainless Steel Over the Range Microwave Oven w/Electronic Touch Pad
- Real Wood Raised Panel Refrigerator Inserts
- Residential Size Double Bowl Sink w/Single Lever Faucet
- Whole Coach Water Filtration System
- Power Roof Fan-Tastic® Vent Fan

### BEDROOM

- Bedspread w/Reverse Pillow Shams
- Night Pleated Shades
- Halogen Reading Lights
- Queen Bed w/Innerspring Mattress (Select Models)
- Carpet w/Pad (Select Models)

### BATHROOM

- Laminate Countertops w/Solid Surface Edge
- Stainless Steel Lavvy Sink
- Bath Door w/Residential Passage Lock
- China Bowl Toilet w/Hand Sprayer
- Medicine Cabinet w/Wood Construction
- Shower Head w/Flexible Hose Extension
- Skylight/Roof Vent w/12V Fan
- Wall Mounted Mirror (Select Models)
- Molded ABS Shower/Tub w/Surround
- Residential Style Metal Faucet w/Large Sink
- Glass Shower Door Enclosure (Select Models)
- Shower Curtain (25G)
- Shower Clothes Rod (Select Models)

### EXTERIOR THROUGHOUT

- High Gloss Tuff-Coat® Smooth Fiberglass Exterior
- Outstanding Exterior Graphics and Styling
- Onan® 4.0kW MicroQuiet Generator
- Large 1" (Inside Diameter) Water Tank Drain
- Rear Ladder
- Steel Basement Truss System

- Utility Compartment w/Exterior Shower and Holding Tank Dump Valves
- Rear Cap Trims
- Debris Awning Above All Slide-Out Rooms
- Trailer Hitch w/7 Pin Electrical Hook-Up†
- Dual 6V Deep Cycle Auxiliary Batteries
- Side Fuel Fill
- Stainless Steel Wheel Simulators
- Full Size Spare Tire w/Carrier
- Patio Awning
- Toilet Tank San-T-Flush™ System
- Roto-Molded Polyethylene Luggage Compartments (Where Applicable)
- Pass Through Storage

### BODY STRUCTURE

- Vacu-bond® Hull Lamination Process
- Vacu-bond® Floor
- Royal Tuff-Ply Radius Roof with Ducted A/C
- Sidewalls Framed with 1-1/2" Aluminum Tubing
- Corrosion Resistant Aluminum Tube Hull Framing
- Molded Rear Wheel Trim Flares
- Powder Coated Molded Rear Wall/Ceiling Transition Trim & Taillight Housing
- Steel Powder Coated Rear Bumper
- Heated Holding Tanks in Basement Compartments
- One-Piece Molded Fiberglass Front End Cap
- 26" Wide Radius Corner Entry Door w/ Obscured Window
- Full Basement Exterior

### STORAGE

- Molded Cross Link Polyethylene Battery Compartment Container and Lid
- Insulated Locking Luggage Doors w/Thumb Latch

### SAFETY & CONVENIENCE

#### INTERIOR

- 10 ABC Fire Extinguisher
- Carbon Monoxide Detector/Alarm
- Exterior & Interior Entry Assist Handle
- Propane Detector/Alarm
- Smoke Detector/Alarm
- Multiple Seatbelt Locations

#### EXTERIOR

- 30 Amp, 30' Power Cord, Compartment Storage
- AC Duplex GFI Receptacle on Patio Side
- Amber Porch Light w/Interior Switch
- Automotive Safety Glass
- Breakaway Side Mirrors w/Power Adjust & Heat Control

- Entry Door w/Screen Door & Deadbolt Lock
- High Mounted Large Taillights
- Hydraulic 4 Wheel Disk Brakes w/4 Wheel Anti-Lock Brakes
- Power Double Electric Step
- Radius Tinted Windows

## OPTIONS

### INTERIOR

- 15,000 Btu A/C with Heat Pump
- Sofa Sleeper w/Air Mattress (Select Models)
- Wrap Around Booth Dinette (Select Models)
- Dual Flat Panel TV Package (31N)
- Soft Toch Sofa Bed (Select Models)
- Soft Touch Sofa Sleeper w/Air Mattress (Select Models)
- Upgraded Linoleum
- Cabover Entertainment System: 32" LCD TV w/Home Theater
- 19" LCD Wide-Screen TV w/Remote and DVD Player
- 32" Swing-Arm Home Entertainment Center
- Satellite Radio
- Mattress Upgrade
- 19" LCD TV (Bedroom)
- Convection Microwave Oven (Select Models)

### EXTERIOR

- Exterior Entertainment Center with AM/FM/CD Player and Auxiliary Speaker, Coax Cable and 12V/110 Receptacles
- Electric Patio Awning
- Dual Pane Windows
- Rear Vision Camera
- Auto Locating Satellite Dish
- Full Body Paint
- Midi Heki Skylight- Sunroof, w/Screen & Pull shade
- Clear Front Protective Mask
- Aluminum Wheels
- Upgrade SL/GT Package includes the following:
  - Soft Touch Driver/Passenger Seat Covers w/logo
  - Solid Surface Countertops
  - 2-Burner Black Seaglass Cooktop Replaces Range
  - Stainless Steel Over the Range Convection Microwave
  - Upgraded Dash Appliqués
  - Chrome Rearview Mirrors
  - Chrome Engine Exhaust Tip
  - Aluminum Wheels
  - Full Body Paint
  - Upgraded Running Boards
  - Molded Front Wheel Trims
  - Soft Touch Sofa
  - Raised Panel Base Cabinet Doors

FORD® E450 CHASSIS						
MODELS	25G	28Y	30U	31M	31N	31W
Engine Displacement (Liters)	6.8	6.8	6.8	6.8	6.8	6.8
Wheelbase (Inches)	176"	198"	206"	218"	214"	214"
GVWR (lbs) <sup>1</sup>	14,500	14,500	14,500	14,500	14,500	14,500
Front GAWR (lbs) <sup>2</sup>	5,000	5,000	5,000	5,000	5,000	5,000
Rear GAWR (lbs) <sup>2</sup>	9,500	9,500	9,500	9,500	9,500	9,500
GCWR (lbs) <sup>3</sup>	19,500	19,500	19,500	19,500	19,500	19,500
Hitch Rating Weight (lbs) <sup>†</sup>	5,000	5,000	5,000	5,000	5,000	5,000
Tongue Weight (lbs) <sup>†</sup>	500	500	350	350	350	350
Fuel Capacity (gal)	55	55	55	55	55	55

DIMENSIONS & CAPACITIES						
MODELS	25G	28Y	30U	31M	31N	31W
Overall Length <sup>4</sup>	26' 2.5"	29' 2.5"	30' 10.5"	32' 5.5"	31' 8.5"	31' 7.5"
Overall Height (with A/C)	11' 5¾"	11' 5¾"	11' 5¾"	11' 5¾"	11' 5¾"	11' 5¾"
Overall Width (maximum) <sup>5, 6</sup>	102"	102"	102"	102"	102"	102"
Interior Height (maximum)	82"	82"	82"	82"	82"	82"
Interior Width (maximum)	96"	96"	96"	96"	96"	96"
Fresh Water Holding Tank (gal)	50	50	60	35	60	60
Grey Water Holding Tank (gal)	37	37	35	35	35	37
Black Water Holding Tank (gal)	36	37	35	35	35	36
Water Heater Tank (gal)	6	6	6	6	6	6
Appliance Propane Tank (gal) (WC) <sup>7</sup>	14	14	14	14	14	14

CHASSIS	LIQUID WEIGHT REFERENCE	METRIC CONVERSION
<b>Model:</b> Ford® E450 <b>Engine:</b> 6.8L Triton V10 <b>Transmission:</b> 5-Speed Automatic w/Overdrive	Water (gal) = 3.8kgs Fuel (gal) = 2.8 kgs Propane (gal) = 1.9 kgs	Multiply pounds x 0.453 to obtain kilograms. Multiply gallons x 3.785 to obtain liters. Multiply liters x 61 to obtain cubic inches.
<b>Alternator Amps:</b> 115 Amp <b>Torque:</b> 420 lb-ft @ 3250 RPM <b>Horsepower:</b> 305HP		

## WHY FLEETWOOD?



### Quality

There's no cutting corners. Skilled craftsmen build every Fleetwood RV for maximum durability and longevity.



### Trust

More people trust Fleetwood. After all, we've spent the last 60 years perfecting RVs, earning the loyalty of generations of RVers.



### Passion

We're truly passionate about the RV lifestyle. Fleetwood was founded by RV enthusiasts, and that tradition continues today.



### Safety

You've got precious cargo. So we've engineered dozens of innovative safety features into our motor homes to give you more peace of mind.



### Service

Help is nearby. When you need an upgrade or repair, you'll find Fleetwood dealers all across North America ready to assist you.



### Warranty

Exclusive RV ownercare warranty. See your Fleetwood dealer for details.

- GVWR (Gross Vehicle Weight Rating) is the maximum permissible weight of this fully loaded motor home. The GVWR is equal to or greater than the sum of the (UVW) unloaded vehicle weight plus the (OCCC) occupant cargo carrying capacity\*.
- GAWR (Gross Axle Weight Rating) is the maximum permissible loaded weight a specific axle is designed to carry.
- GCWR (Gross Combined Weight Rating) is the value specified by the motor home manufacturer as the maximum allowable loaded weight of this motor home with its towed vehicle. Towing and braking capacities may be different. Refer to Fleetwood and chassis manufacturer's manuals for complete information.
- Length measured from front bumper to rear bumper (excludes accessories).
- Excludes safety equipment and awnings.
- Motor homes feature a body-width over 96" which will restrict your access to certain roads. Before purchasing, you should research any state and/or province road laws which may affect your usage.
- Tank manufacturer's listed water capacity (WC). Actual propane capacity is 80% of water listing as required by the safety code.

- † The chassis manufacturer recommends the installation of a supplemental brake control system to activate the brakes on the vehicle or trailer you are towing. Hitch receiver ratings expressed are maximum for the hitch receiver installed and may require the purchase of additional equipment that is dependent on the weight of the towed load. Consult with hitch receiver manufacturer for further information.
- \* UVW and OCCC are found on the label containing the federal certification tag in each RV.

**IMPORTANT – PLEASE READ:** Product information, photography and illustrations included in this publication were as accurate as possible at the time of printing. For further product information and changes, please visit our website at [www.fleetwoodrv.com](http://www.fleetwoodrv.com) or contact your local Fleetwood dealer. Prices, materials, design and specifications are subject to change without notice. All weights, fuel, liquid capacities and dimensions are approximate. Fleetwood has designed its recreational vehicles to provide a variety of uses for its customers. Each vehicle features optimal seating, sleeping, storage and fluid capacities. The user is responsible for selecting the proper combination of loads (i.e. occupants, equipment, fluids, cargo, etc.) to ensure that the vehicle's capacities are not exceeded.