



2011 | CLASS A DIESEL | DISCOVERY®

FLEETWOOD RV



Discovery

OPEN UP TO LIFE'S OPPORTUNITIES



DISCOVERY 42C shown in Antique Copper interior décor with Brown Sugar wood cabinetry.

REASON TO CELEBRATE.

When your Discovery rolls into camp, everybody notices. And it's not just Discovery's commanding presence. People know the celebration is about to begin; share the fun with family and friends.



WHY BUY DISCOVERY?

- 380HP CUMMINS® ISC 8.3L ENGINE
- FULL-BODY PAINT
- SONY® ELECTRONICS
- 2000 WATT PURE SINE WAVE INVERTER W/REMOTE
- 8.0 KW ONAN® QUIET DIESEL GENERATOR
- CERAMIC TILE FLOORING
- HARDWOOD CABINET DOORS/DRAWERS
- MANUAL DOUBLE ROLLER SHADES
- SIDE SWINGING LUGGAGE DOORS
- 84" INTERIOR CEILING HEIGHT
- OPTIONAL EXTERIOR GRILL AND KITCHENETTE



2011
Discovery

EXTERIOR GRAPHICS



Antique Frost



Gold Starfire



Granite Pearl



Graphite Storm



Platinum Frost

INTERIOR DÉCORS
& WOOD FINISHES

BROWN
SUGAR



MOONSTONE KHAKI



ANTIQUE COPPER



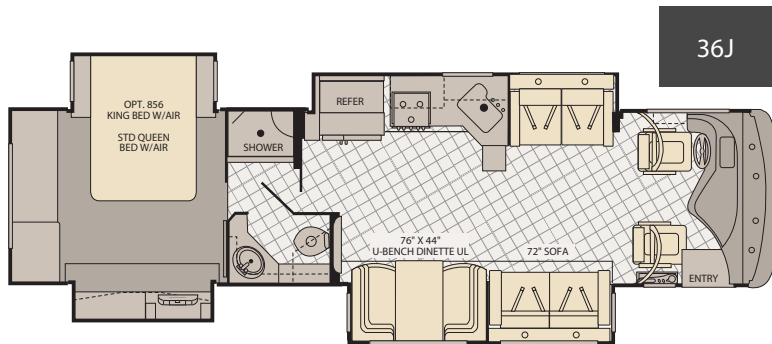
WARM
HONEY



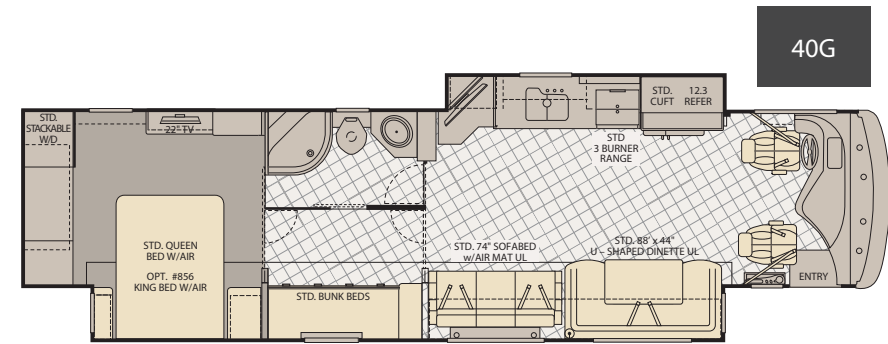
CHESTNUT RAVEN



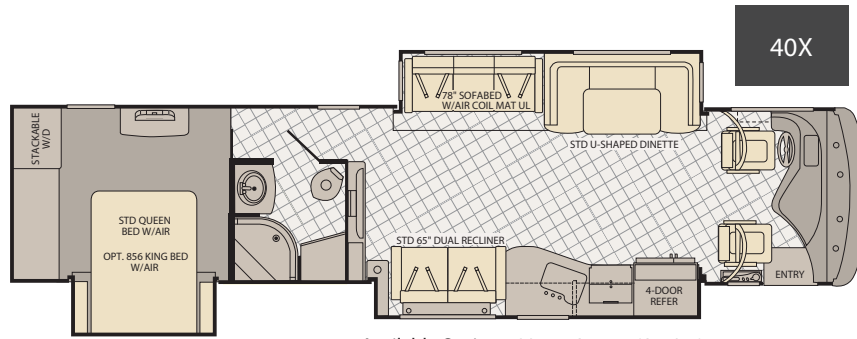
FLOOR PLANS



• Available Options: 087, 144, 635, 856

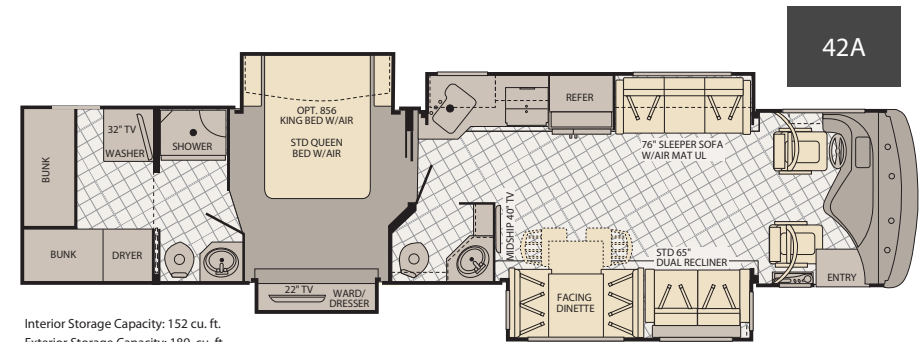


• Available Options: 087, 144, 867, 878, 856



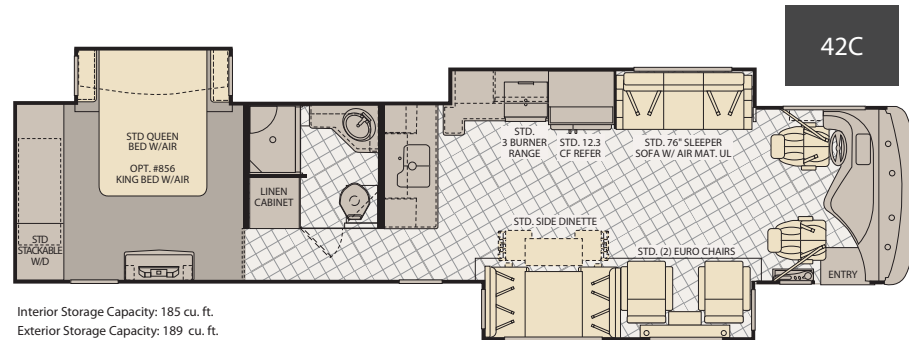
Interior Storage Capacity: 197 cu. ft.
Exterior Storage Capacity: 208 cu. ft.

• Available Options: 087, 113, 144, 627, 856



Interior Storage Capacity: 152 cu. ft.
Exterior Storage Capacity: 189 cu. ft.

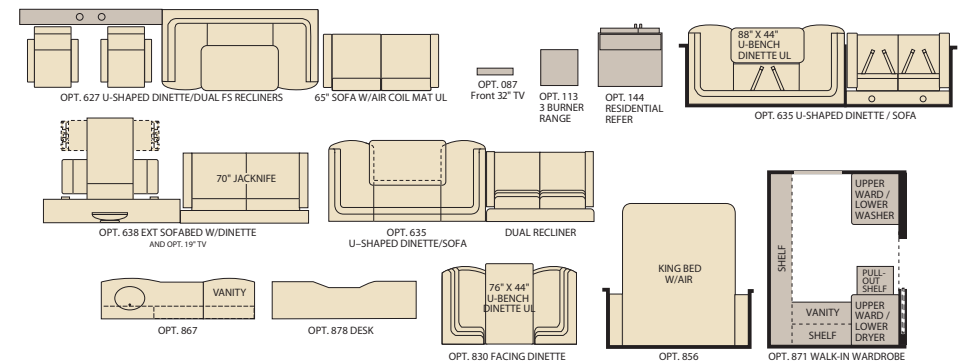
• Available Options: 087, 144, 856, 871



Interior Storage Capacity: 185 cu. ft.
Exterior Storage Capacity: 189 cu. ft.

• Available Options: 144, 635, 638, 856

FLOOR PLAN OPTIONS



Seatbelt configuration may vary depending on options chosen.

STANDARD FEATURES AND OPTIONS

STANDARD FEATURES

INTERIOR THROUGHOUT

- 20,000/25,000 Btu Dual Furnaces (36J, 40G)
- 20,000/30,000 Btu Dual Furnaces (40X)
- 25,000/34,000 Btu Dual Furnaces (42A, 42C)
- 84" Interior Ceiling Height
- Complete TuffPEX Plumbing System
- Crown Molding
- Manual Double Roller Shades
- Deluxe Roller Bearing, Full Extension Drawer Guides & Transit-Ship Locks
- Demand Water Pump w/Filter
- Dual Roof Mounted, High Efficiency A/C w/Solar Panel
- Hardwood Cabinet Doors/Drawers
- Wall-to-Wall Ceramic Tile to Bedroom
- Plush Wall-to-Wall Carpet w/Carpet Pad in Bedroom
- Stackable Washer & Dryer
- Wall Sconces
- Wall Switches
(Includes Switches for Ceiling Lights & Vents)
- Water Heater Bypass
- Whole Coach Water Filtration System
- Wood Finish Return Air Intake for Furnace
- Central Vacuum System
- Water Heater 16 Gallon Output

DRIVER CONVENIENCE

- Adjustable 3 Point Seat Belts at Driver & Front Passenger Seats (w/Adjustable Shoulder Straps)
- Dual Dash Monitors
- Auxiliary Start Circuit
- Battery Disconnect System
- CB Radio Ready
- Cruise Control
- Driver Side Manual Pull Down Shade
- Villa® Driver/Front Passenger Soft Touch Captain's Chairs w/Reclining Back/Slide Controls w/Power Driver Seat
- Denso High Output Auto A/C Heater Combo
- Pass Armrest w/Integrated Magazine Rack & Easy Access Battery Disconnect Switch
- Power Driver/Front Passenger Sun Visors
- Radio Switch Main/Auxiliary Power
- Snack Tray/Service Door at Dash
- Tilt/Telescoping Steering Wheel
- Power Entry Step Cover
- 110 Volt Power Outlet at Dash
- 2-12 Volt Power Outlets at Dash
- Power Passenger Seat w/Power Footrest
- Automatic Generator Start System
- Radio w/Built in GPS, Back-Up Camera & Mirror-Mounted Side Cameras

GALLEY

- GE 1 cu.ft. Convection Microwave Oven w/Built in Range Hood & Light
- 3 Burner, High Output Cooktop w/Sealed Burners (36J, 40X, 42A)
- 3 Burner, High Output Range w/Sealed Burners (40G, 42C)
- Adjustable Cabinet Shelves (Select Cabinets)
- Fan-Tastic® Power Roof Vent w/Wall Switch
- Pull-Out Countertop (36J)
- Dometic® 12.2 cu.ft. Residential Style 4 Door Refrigerator w/Ice Maker & Water Dispenser

- Galley Faucet w/Pullout Sprayer
- Slide-Out Dinette Drawers w/Latches
- Solid Surface Countertop w/Sink & Range Covers
- Under Galley Shelving & Wastebasket
- Window Over Sink
- Corian Dinette Tabletop

LIVING ROOM

- Sony® 32" LCD HDTV (32" Midship in 36J, 40G & 40K; 40" Midship in 40X & 42A)
- Sony® 5.1 Home Theater System w/Built in AM/FM/DVD & Surround Sound Speakers
- Villa® Residential Seat Styling
- TV Antenna w/ Signal Booster

BEDROOM

- Sony® 22" LCD HDTV
- Slide-Out Features Overhead Cabinet
- Bedspread w/Décor Pillows
- Coffin Ceiling
- Remote Generator Start
- Deluxe Pillow Top Innerspring Mattress
- Ventilated Rear Wardrobe w/Cedar Lining, Carpeted Floor & Wire Organizer
- Wardrobe Lighting
- Bedroom Dash Radio Switch

BATHROOM

- A/C Venting
- Cabinet Toe Kicks
- Fan-Tastic® Power Roof Vent w/Wall Switch
- Glass Shower w/Skylight and Low Threshold
- Faucet
- Hardwood Bath Door/Trims
- Lighted Assist Handle
- Make-Up Lights (Some Models)
- Porcelain Toilet w/Water Saver
- Halogen Lighting Over Bathroom Sink

SAFETY/CONVENIENCE

- Carbon Monoxide Detector/Alarm
- Energy Management System (EMS) w/Soft Start
- Fire Extinguisher
- Multiple Seatbelt Locations
- Propane Detector/Alarm
- Smoke Detector/Alarm
- Neutral Loss Protection Standard

EXTERIOR THROUGHOUT

- 120V/12V AC/DC Converter
- 120V/12V Wire Raceways
- 2000 Watt Pure Sine Wave Inverter w/Remote
- 4 Point Automatic Levelers
- 50 Amp Service
- 8.0 KW Onan® Quiet Diesel Generator
- Manual Generator Slides
- Awning Rail/Drip Molding (Both Sides)
- Doorside Patio Receptacle
- DSS Auto Locating Satellite Dish (Covered)
- Dual Pane Windows w/Screens
- Fiberglass Front Quarter Panels
- Fiberglass Wheel Well Trims
- Full-Body Paint w/Color & Graphics
- New Exterior Graphics & Colors - 5 Choices
- Weather Pro Power Awnings (Patio Awning Includes Wind Sensor)

- Patio Awning
- Fiberglass Front/Rear Caps w/High Mounted Taillights
- Water Pump Switch (Multiple Locations)
- Exterior Entertainment Center w/Sony® 32" LCD HDTV and High Output, Splashproof AM/FM/DVD Sound System
- Heat Pump in Bedroom A/C

AUTOMOTIVE

- 10,000 lb. Weight Distributing Hitch Receiver w/7 Pin Electrical Hook-Up†
- Aluminum Wheels
- Dual Fuel Fill (One on Each Side)
- Fog Lamps
- Mud Flaps
- Color Rear & Side Vision Camera System
- Remote Keyless Entry
- Windshield Wipers w/Wet Arm
- Underhood Utility Light
- Large One-Piece Bonded-in Windshield
- 380HP Cummins® ISC 8.3L Engine
- Power Bridge Chassis® - 36', 40' Models
- Liberty Chassis® - 42' Models
- Heated Chrome Power Exterior Mirrors w/Turn Signals w/Sideview Cameras
- Diamond Shield Clear Front Protective Mask

SAFETY/CONVENIENCE

- 20' Sewer Hose
- ABS Brakes
- Automotive Safety Glass
- Daytime Running Lights
- Easy Sweep Flooring at Entry Step
- Entry Door w/Screen Door & Deadbolt Lock
- Four 6V/Deep Cycle House Batteries
- Lighted Entry Assist Handle
- Power Entry Step
- Remote/Heated Rear View Mirrors
- Toilet Tank San-T-Flush™ System
- Touch Sensor Tank Monitoring System
- Utility Compartment w/Exterior Shower
- Rear Side Marker Lights

STORAGE

- Continuous One-Piece Compartment Bulb Seal
- Pass Through Storage
- Side Swinging Luggage Doors
- Insulated Aluminum Luggage Doors w/Single Paddle Metal Latches & Corrosion Resistant Steel Hinges
- Large Compartment Doors
- Lighted Luggage Compartments

BODY STRUCTURE

- Aluminum Interlocking Floor/Wall/Ceiling Framing
- Tuff-Ply Roof
- Heated Water & Holding Tank Compartments
- Quiet Cool Ducted A/C
- Vacu-bond® Upper/Lower Floors, Walls & Ceilings

OPTIONS

INTERIOR

- CSA Package (Canadian Specs)**

GALLEY

- 3 Burner Sealed Drop-In Range w/Oven (40X)
- GE 22 cu-ft Residential Refer w/Two Additional Batteries & Additional Inverter (No Extra Charge)

LIVING ROOM

- Vanity (40G)
- Facing Dinette
- U-Shaped Dinette/Sofa (36J, 42C)
- U-Shaped Dinette/Dual FS Recliners (40X)
- Extended SofaBed w/Dinette (42C)
- Sony® 32" LCD HDTV in Front Overhead (36J, 40G, 40X, 42A)
- Desk (40G)

BEDROOM

- Dresser/Vanity w/Second Sink (40G)
- Walk-in Closet w/Washer & Dryer (42A)
- Adjustable King Air Mattress

EXTERIOR

- Solar Electric Power
- B Tray Package (Split Trays)
- Mobile DSS System
- 3rd Roof A/C (40G, 40X)
- Exterior "Pull Out" Grill & Kitchenette
- Window Awning Package

FLEETWOOD ADVANTAGES

- Sony® 32" LCD HDTV in Living Room (40" in 40X & 42A), Sony® 22" LCD HDTV in Bedroom
- Sony® 5.1 Home Theater System w/Surround Sound
- Sony® In-Dash Stereo
- HDMI Electronic Components Throughout Coach
- TV & Home Theater Remote Control Operation
- Built-In, Standard or HDMI, Satellite Receiver AV Input Jack
- Single, Digital, LED Extend Retract Switch that combines five (5) functions including: awnings, step well Cover & Slide-Out Functions, into one (1), easily-accessible unit
- 50 Amp EMS System that monitors both legs of power
- 110AC Outlet in Dash Area
- Full-Wall Slide (Patent Pending)
- 380HP Cummins® ISC 8.3L Engine
- Vacu-bond® Walls w/Smooth High Gloss Exterior Tuff-Coat® Fiberglass
- Large One-Piece Bonded-in Windshield
- Pass-Through Storage
- Side Swinging Luggage Doors
- Deluxe Roller Bearing, Full Extension Drawer Guides
- 84" Interior Ceiling Height
- Power Bridge™ Construction (Fleetwood RV Exclusive)
- Liberty Chassis®

**CSA Standards may require substitution or deletion to achieve conformance

WEIGHTS AND MEASUREMENTS

CHASSIS	FREIGHTLINER®			SPARTAN®	
MODELS	36J	40G	40X	42A	42C
Wheelbase (Inches)	228"	276"	276"	302"	302"
GVWR (lbs) ¹	32,400	32,400	32,400	44,600	44,600
Front GAWR (lbs) ²	12,400	12,400	12,400	14,600	14,600
Tag Axle GAWR	N/A	N/A	N/A	10,000	10,000
Rear GAWR (lbs) ²	20,000	20,000	20,000	20,000	20,000
GCWR (lbs) ³	42,400	42,400	42,400	54,600	54,600
Hitch Rating Weight (lbs) [†]	10,000	10,000	10,000	10,000	10,000
Tongue Weight (lbs) [†]	1,000	1,000	1,000	1,000	1,000
Fuel Capacity (gal)	100	100	100	150	150

POWER BRIDGE CHASSIS (36'- 40' MODELS)

Model: Freightliner® XCM Series

Engine: Cummins® 8.3L ISC

Transmission: Allison® 3000 MH 6-Speed

Alternator: Delco Remy 160 Amp

Torque: 1050 lb-ft

Horsepower: 380HP

LIBERTY CHASSIS (42' MODELS)

Model: Spartan®

Engine: Cummins® 8.3L ISC

Transmission: Allison® 3000 MH 6-Speed w/ Electronic Shifter

Alternator: Leece Neville 170 Amp

Torque: 1050 lb-ft

Horsepower: 380HP

DIMENSIONS & CAPACITIES

MODELS	36J	40G	40X	42A	42C
Overall Length ⁴	37' 7.5"	41' 7.5"	41' 7.5"	43' 4"	43' 4"
Overall Height (with A/C)	12' 10"	12' 10"	12' 10"	12' 10"	12' 10"
Overall Width (maximum) ^{5,6}	102"	102"	102"	102"	102"
Interior Height (maximum)	84"	84"	84"	84"	84"
Interior Width (maximum)	96"	96"	96"	96"	96"
Fresh Water Holding Tank (gal)	100	100	100	100	100
Grey Water Holding Tank (gal)	75	75	75	60	60
Black Water Holding Tank (gal)	50	50	50	40	40
Appliance Propane Tank (gal) (WC) ⁷	38.7	38.7	38.7	28.2	28.2
Water Heater Tank (gal)	10	10	10	10	10

Liquid Weight Reference:

Water (gal) = (8.3 lbs/3.8 kgs) Fuel (gal) = (6.1 lbs/2.8 kgs) Propane (gal) = (4.2 lbs/1.9 kgs)

Metric Conversion:

Multiply pounds x 0.453 to obtain kilograms. Multiply gallons x 3.785 to obtain liters.

Multiply liters x 61 to obtain cubic inches.

- GVWR (Gross Vehicle Weight Rating) is the maximum permissible weight of this fully loaded motor home. The GVWR is equal to or greater than the sum of the (UVW) unloaded vehicle weight plus the (OCCC) occupant cargo carrying capacity*.
 - GAWR (Gross Axle Weight Rating) is the maximum permissible loaded weight a specific axle is designed to carry.
 - GCWR (Gross Combined Weight Rating) is the value specified by the motor home manufacturer as the maximum allowable loaded weight of this motor home with its towed vehicle. Towing and braking capacities may be different. Refer to Fleetwood and chassis manufacturer's manuals for complete information.
 - Length measured from front bumper to rear bumper (excludes accessories).
 - Excludes safety equipment and awnings.
 - Motor homes feature a body-width over 96" which will restrict your access to certain roads. Before purchasing, you should research any state and/or province road laws which may affect your usage.
 - Tank manufacturer's listed water capacity (WC). Actual propane capacity is 80% of water listing as required by the safety code.
- † The chassis manufacturer recommends the installation of a supplemental brake control system to activate the brakes on the vehicle or trailer you are towing. Hitch receiver ratings expressed are maximum for the hitch receiver installed and may require the purchase of additional equipment that is dependent on the weight of the towed load. Consult with hitch receiver manufacturer for further information.
- * UVW and OCCC are found on the label containing the federal certification tag in each RV.

IMPORTANT — PLEASE READ: Product information, photography and illustrations included in this publication were as accurate as possible at the time of printing. For further product information and changes, please visit our website at www.fleetwoodrv.com or contact your local Fleetwood RV dealer. Prices, materials, design and specifications are subject to change without notice. All weights, fuel, liquid capacities and dimensions are approximate. Fleetwood RV has designed its recreational vehicles to provide a variety of uses for its customers. Each vehicle features optimal seating, sleeping, storage and fluid capacities. The user is responsible for selecting the proper combination of loads (i.e. occupants, equipment, fluids, cargo, etc.) to ensure that the vehicle's capacities are not exceeded.





RV OWNERCARE*

Limited one-year/15,000-mile coach warranty and three-year/45,000-mile structural warranty, whichever occurs first, and it is fully transferable for the first 12 months. RV OWNERCARE is one of the RV industry's most comprehensive programs and includes systems, appliances, components and construction, with no deductible and no service charge. RV OWNERCARE coverage is provided from a company that will be around in the future to service your needs. See your nearest Fleetwood RV dealer for a full explanation of benefits and restrictions.

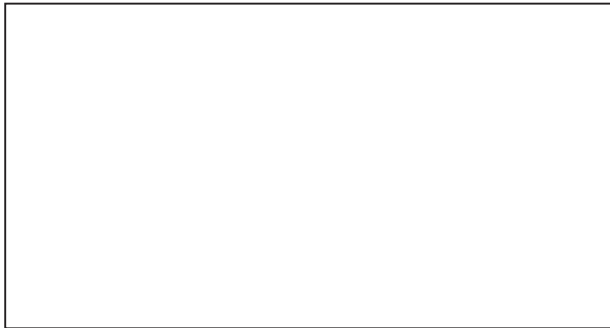
CONTACT US

To locate a dealer near you, visit our website at www.fleetwoodrv.com or call 1-800-322-8216. We can also be contacted at Fleetwood RV Customer Relations, P.O. Box 1007, Decatur, IN 46733.

FLEETWOOD RV MOTOR HOME CLUBS

As a Fleetwood RV owner, you're invited to become a member of several Fleetwood RV motor home clubs. Becoming a club member is the perfect way to meet other Fleetwood owners who love to travel across America and share in the RV lifestyle. Visit our website at www.fleetwoodrv.com/owners_clubs to learn more and join the fun.

YOUR LOCAL FLEETWOOD RV DEALER IS:



IMPORTANT—PLEASE READ

Product information, photography and illustrations included in this publication were as accurate as possible at the time of printing. For further product information and changes, please visit our website at www.fleetwoodrv.com or contact your local Fleetwood RV dealer. Prices, materials, design and specifications are subject to change without notice. All weights, fuel, liquid capacities and dimensions are approximate. Fleetwood RV has designed its recreational vehicles to provide a variety of uses for customers. Each vehicle features optimal seating, sleeping, storage and fluid capacities. The user is responsible for selecting the proper combination of loads (i.e. occupants, equipment, fluids, cargo, etc.) to ensure that the vehicle's capacities are not exceeded.

WHY FLEETWOOD RV?



Quality

There's no cutting corners. Skilled craftsmen build every Fleetwood RV for maximum durability and longevity.



Trust

More people trust Fleetwood RV. After all, we've spent the last 60 years perfecting RVs, earning the loyalty of generations of RVers.



Passion

We're truly passionate about the RV lifestyle. Fleetwood RV was founded by RV enthusiasts, and that tradition continues today.



Safety

You've got precious cargo. So we've engineered dozens of innovative safety features into our motor homes to give you more peace of mind.



Service

Help is nearby with 24/7 emergency roadside assistance through **Coach-Net****. And when you need an upgrade or repair, you'll find Fleetwood RV dealers all across North America ready to assist you.



Warranty

Exclusive RV ownercare warranty. See your Fleetwood RV dealer for details.

*All 2011 Fleetwood RV motor homes include a 1-year membership to Coach-Net.

*For complete info see your Fleetwood RV dealer.

©2010. Fleetwood RV, Inc.
Printed in the USA. Inventory Control Number DI10B1, 11/10.
Model Year 2011, First Edition.

