

HIDEOUT

WESTERN EDITION



HIDEOUT

WESTERN EDITION

HORNET



HORNET





The Hideout introduces the perfect lineup of RVs for your family. Kids, grand-children, friends - everyone fits with room to spare in a Hideout. With an incredible choice of bunkhouse and family friendly models, Hideout is your perfect choice for family camping.



HIDEOUT 30RKSWE SHOWN IN SADDLEBROOK DECOR



The 318BDSWE bunk room is designed specifically to be the kids' domain. We've built in plenty of storage for all the clothes and toys. Best of all, everyone has their own space when it's time to settle in for the night..



27RBWE BUNKS OFFER COMFORT FOR THE WHOLE FAMILY.

Luxury Comes Standard



With upscale luxury features inside and out the Hideout is more than just a travel trailer.

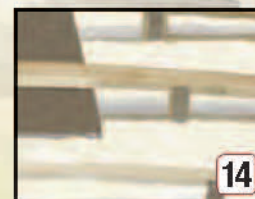
Comfort and luxury for the whole family are standard in the Hideout.



Visit us online to see more features and information.
www.keystone-hideout.com



FORCED FURNACE AIR INTO THE UNDERBELLY ON MEGA SLIDES, DOUBLE SLIDES, 23RB, 24RLS



HIDEOUT

KEY FEATURES

1. Radius Interior Bath Walls
2. Night Shades in Living Room
3. Kitchen Countertop Extension
4. Exterior TV Hookup/Cable and Bracket
5. E-Coated Wheels
6. Upgraded Graphics Package
7. Entrance Door Featuring Integrated Strut
8. Dometic Adjustable Power Awning
9. XL Entry Assist Handle
10. Enclosed Underbelly with Heated Fresh Water Tank (N/A 19FLB, 20RD, 22RB, 23RKS, 27RB)
11. Integrated CD/DVD Player
12. Black Tank Flush
13. LP Quick Disconnect for BBQ
14. Double Insulation Ceiling

NEO ANGLE SHOWER

AVAILABLE IN THE FOLLOWING MODELS
23RBS, 23RKS, 24RLS, 26RBS,
27FLBS, 30RKS, 38BHDS, 38FQDS



DECOR OPTIONS



BROOKSTONE



MAPLECREST



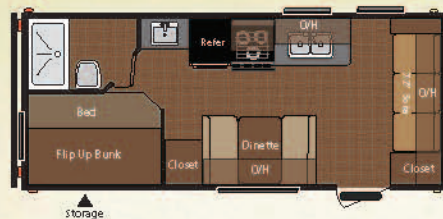
SADDLEBROOK



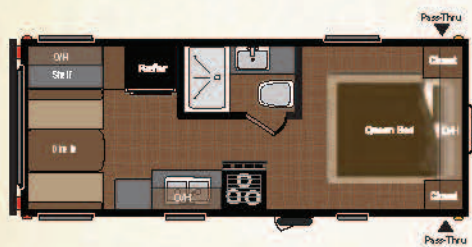
Get the high-end look without the high-end price! Hideout offers a wide range of floorplans, features, and luxury details in a light and affordable travel trailer. There's sure to be a floorplan to match your camping needs.



Get the free mobile app at <http://gettag.nuebi> and scan this Tag.



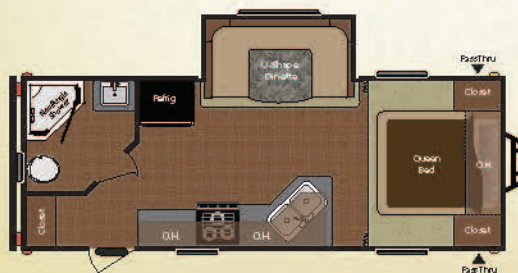
19FLBWE



20RDWE



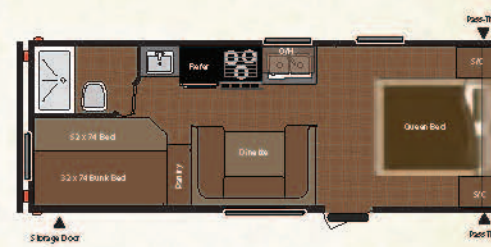
22RBWE



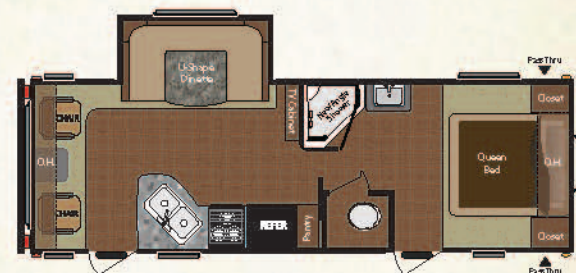
23RBSWE



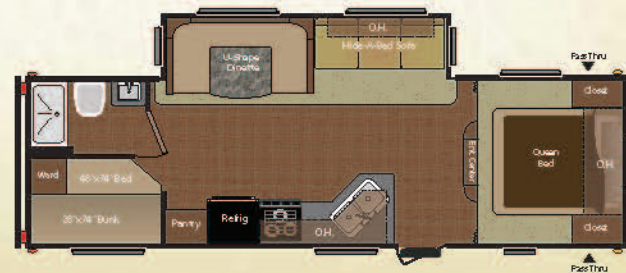
23RKSWE



24BHW



24RLSWE



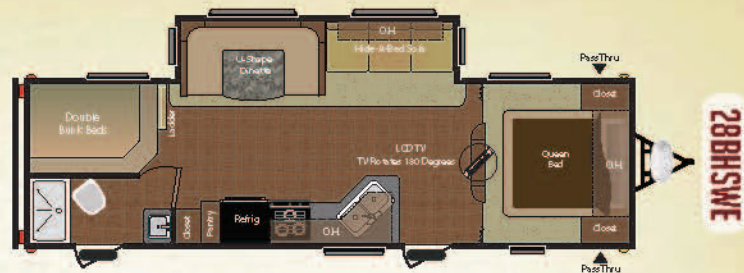
26BHSWE

HIDEOUT

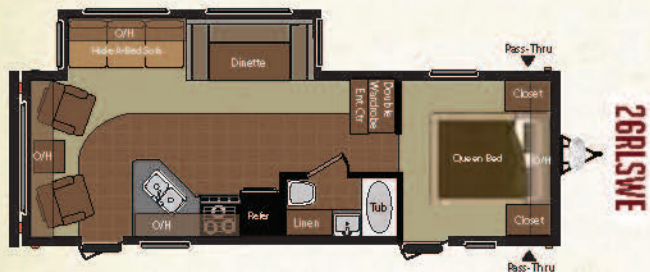
WESTERN EDITION



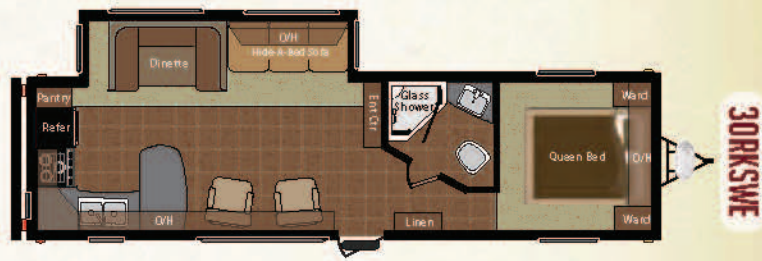
26RBSWE



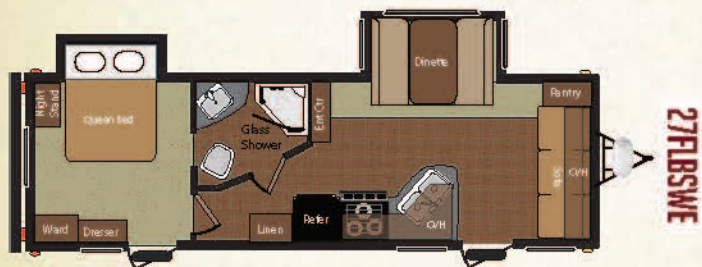
28RBSWE



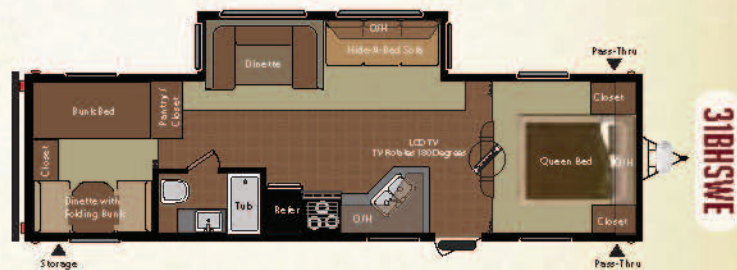
26RISWE



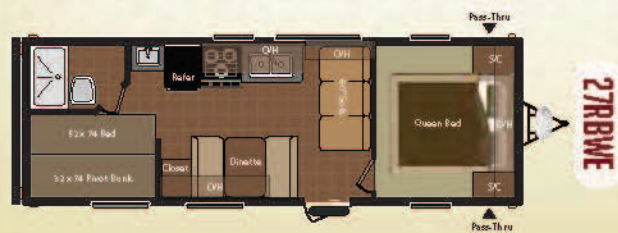
30RKSWE



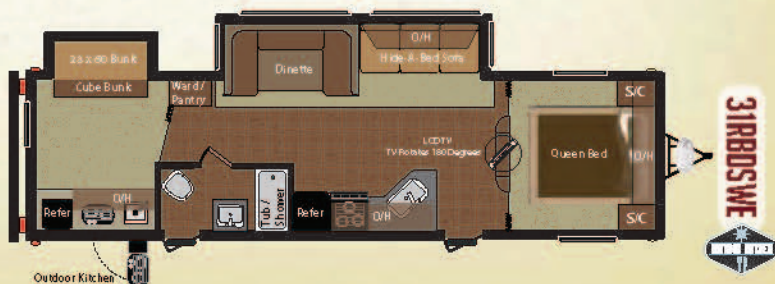
27FLBSWE



31RBSWE



27RBSWE



31RBSWE

FLOORPLANS



View photos and more on our website www.keystone-hideout.com
Click on the camera icon in the floorplans page to view snap shots



FORCED FURNACE AIR INTO THE UNDERBELLY
ON MEGA SLIDES, DOUBLE SLIDES,
23RB, 24RLS

Hideout has a Floor Plan to Accommodate Any Family!

With a variety of great floorplans to choose from the Hideout has a lot to offer. Spacious open style floorplans designed with easy access to all of your amenities.



CONSTRUCTION

- One Piece Rubber Roof
- 3/8" OSB Roof Decking
- Twin 30 Lb. LP Bottles with Cover
- Electric Color Matched Awning
- R-14 Insulation in Ceiling, and R-7 Insulation in Sidewalls & Floor
- Dual Battery Trays
- Radius Window Corner Blocks
- 5/8" Seamless Floor Decking
- Easy Lift Steps
- 6 Gallon Gas/Electric DSI Water Heater
- Easy Lube Axles
- Stabilizer Jacks
- Black Framed, Tinted Safety Glass Windows
- Rain Gutter with Down Spouts
- Exterior Speakers
- 13,500 BTU Ducted Air Conditioner
- 30,000 BTU Furnace
- Bumper Sewer Hose Storage



- Double Trusses at Openings
- Walkable Crowned Roof
- Foam Core Insulated Ducts

- Hurricane Strap Reinforcement
- Oversized Pass Through Storage
- Diamond Plate Front Protector

- One Piece I-Beam Frame

Two burner gas stove which rotates inward for storage

Abundant overhead cabinet storage

110 volt receptacle and cable TV connection

Compact electric refrigerator

Silverware drawer

Sink with hot and cold water and sprayer hose

Paper towel holder

Fully Functional Outdoor Kitchen

(Available on Hideout models 22RB and 31RBDS)



HIDEOUT

WESTERN EDITION

WEIGHTS & MEASUREMENTS



MODEL	19FLBWE	20RDWE	22RBWE	23RBSWE	23RKSW	24BHWE	24RLSWE	26BHSWE	26RBSWE	26RLSWE	27FLBWE	27RBWE	28BHSWE	30RKSW	31BHSWE	31RBDWE
SHIPPING WEIGHT	4105	4330	4860	5320	5270	4491	5790	6400	6098	6150	6650	5060	6468	6958	6726	7399
CARRYING CAPACITY	2695	2470	2730	2230	2155	2929	1680	1400	1602	1550	3050	2520	1252	2702	2849	2221
HITCH WEIGHT	425	490	590	550	650	420	470	800	700	730	900	580	720	860	775	820
LENGTH	23'	23' 10"	27' 5"	26' 1"	28' 6"	26' 5"	28' 7"	31' 6"	21' 10"	29' 11"	31'	30'	32' 6"	34' 1"	33' 9"	34' 4"
HEIGHT	10' 6"	10' 3"	10' 3"	10' 3"	10' 6"	10' 3"	10' 3"	11' 3"	11' 3"	11' 3"	10' 9"	11' 3"	11' 3"	10' 10"	10' 10"	10' 10"
FRESH WATER	60	60	60	60	60	60	60	60	60	60	60	60	60	60	45	60
WASTE WATER	32	38	38	38	38	38	38	38	38	38	38	38	38	38	38	38
GRAY WATER	38	76	38	76	64	38	38	76	38	38	38	76	76	76	38	38
LPG	60	60	60	60	60	60	60	60	60	60	60	60	60	60	60	60

DISCLAIMER: Product information is as accurate as possible as of the date of publication of this brochure. All features, floor plans, and specifications in this brochure are subject to change without notice. Please also consult Keystone's web site at www.keystone-hideout.com for more current product information and specifications. All customers should consult with a motor vehicle manufacturer or their dealer concerning the purchase and use of suitable tow vehicles for Keystone products. Keystone disclaims any liability or damages suffered as a result of the selection, operation, use or misuse of a tow vehicle. KEYSTONE'S LIMITED WARRANTY DOES NOT COVER DAMAGE TO THE RECREATIONAL VEHICLE OR THE TOW VEHICLE AS A RESULT OF THE SELECTION, OPERATION, USE OR MISUSE OF THE TOW VEHICLE. 05/12

HORNET

Platinum

WEIGHTS & MEASUREMENTS



MODEL	SHIPPING WEIGHT	CARRYING CAPACITY	HITCH WEIGHT	LENGTH	HEIGHT	FRESH WATER	WASTE WATER	GRAY WATER	LPG
275RLS	7330	2845	1375	30' 2"	11' 9"	45	38	38	60
285RKS	7625	2530	1355	31' 5"	11' 9"	45	38	76	60
295BHS	7890	2410	1540	32' 4"	11' 9"	45	38	76	60



HORNET 275RLS SHOWN IN BROOKSTONE DECOR



Get the free mobile app
at <http://gettag.mobi>
and scan this Tag.

HORNET
Platinum

All new aerodynamic profile, 7-foot tall ceilings, more storage, and new Mega Slide System deliver more livability in these family friendly RVs. Step out of the ordinary and step into the NEW Hornet.



NEW

AERODYNAMIC
FRONT PROFILE

NEW

DESIGN & GRAPHICS

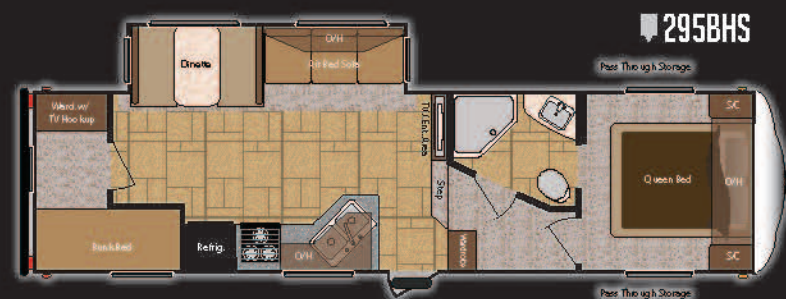


- EZ Trax Axle System
- Aerodynamic Front Profile
- Aluminum Wheels Option
- Darco Wrapped Main Floor Moisture Barrier
- 5/8" Seamless Sub-Floor
- Sub-Floor Limited Lifetime Warranty
- Laminated Side Wall
- Interior Radius Walls
- Heated and Enclosed Underbelly

- 4 1/2" Crowned Roof
- Truss Cleats on Both Sides
- Double Trussed at Openings
- Loomed Wiring
- Radius Corner Blocks
- Radius Storage Doors
- Radius Entry Doors
- Neo Angle Shower (all models)



HORNET FLOORPLANS



HIDEOUT STANDARD FEATURES

EXTERIOR

- » Upgraded Graphics Package
- » Dometic Power Awning
- » Black Tank Flush
- » Exterior TV Hookup/Cable and Bracket
- » Entrance Door Featuring Integrated Strut
- » Exterior Shower
- » Walk on Roof
- » Ladder Backers (N/A 19FLB)
- » Cambered Chassis
- » Two Heavy Duty Stabilizer Jacks
- » Easy Lube Axles
- » Full Length Outriggers
- » Dual Battery Rack
- » Two 30 lb. LP Bottles with Easy Access Cover
- » Awning Color Coordinated

- » Heated and Enclosed Fresh Water Tank (All units)
- » Heated and Enclosed Underbelly (Mega Slide, Double Slide, 23RB, 24RLS)
- » Fender Skirts
- » Exterior Speakers
- » Black Radius Window Frames
- » TV Antenna with Booster
- » Radio Antenna
- » Roof Vents
- » Cable Hook Up
- » GFI Electrical Outlets
- » Seamless One Piece Roof
- » Radius Skirting
- » Oversized Pass Thru Storage
- » Hose Storage in the Bumper
- ».024 Gauge Aluminum Siding
- » R-7 Insulation in Sidewalls and Floor, R-14 in Ceiling

- » Rain Gutters with Down Spouts
- » Four Stage Slide Room Seals
- » Roto-Cast Seamless Holding Tanks

INTERIOR

- » Radius Interior Bath Walls
- » 4 Interior Surround Sound Speakers
- » Interior TV Bracket
- » LCD TV (standard on Mega Slide and Double Slide units, optional on all other units)
- » Kitchen Countertop Extension
- » Ball Bearing Drawer Guides
- » Nightshades in Living Room Arrangements
- » 12 Volt 55 Amp Converter
- » 13,500 BTU Air Conditioner
- » Entertainment System with AM/FM, CD, MP3 Jack
- » Integrated DVD Player
- » Foam Core Insulated A/C Ducts
- » Wallpaper Border
- » Built-In Furnace
- » 6 Gallon Gas/Electric DSI Quick Recovery

- » Water Heater with By Pass Kit
- » Flex Pex Tubing with 10 Year Warranty
- » 78" Interior Height
- » Tub Surround
- » Porcelain Foot Flush Toilet
- » Wall Switches for the Lights
- » RG6 Cable and Satellite Wiring
- » Pre-Drilled & Screwed Residential Cabinetry Throughout
- » Decorative Window Treatments
- » Panoramic Dinette Window
- » Jack Knife Sofa-Standard
- » Mini Blinds
- » 4 1/2" Crowned Roof
- » Truss Cleats on Both Sides
- » Double Trussed at Openings
- » Hurricane Straps Throughout
- » Loomed Wiring
- » Radius Corner Blocks
- » Radius Storage Doors
- » Radius Entry Doors

SAFETY

- » Safety Chains
- » Break Away Switch
- » Electric Brakes on All Wheels
- » Carbon Monoxide Detector
- » L.P. Gas Detector
- » Smoke Detector
- » Fire Extinguisher
- » GFI Electrical Outlets
- » Tinted Safety Glass
- » Radial Tires

OPTIONS

- » Spare Tire and Carrier
- » Air Bed Sofa (N/A 19FLB, 20RD, 22RB, 23RB, 23RKS, 24BH, 24RLS, 27RB, 27FLBS)
- » Rear Ladder (N/A 19FLB)
- » 15,000 BTU Air Conditioner
- » Two Additional Stabilizer Jacks (Four Total)
- » Residential Refrigerator (38BHDS, 38FDQS only)
- » Freestanding Dinette (38BHDS, 38FDQS only)

*All Features Not Available on All Models

HORNET STANDARD FEATURES

EXTERIOR

- » Walk on Roof
- » Electric Awning
- » Filon Front Cap
- » Ladder Backers
- » Powder Coated I-Beam Frame
- » Cambered Chassis
- » Four Heavy Duty Stabilizer Jacks
- » EZ Trax Suspension System
- » Aluminum Rims
- » Easy Lube Axles
- » Full Length Outriggers
- » Dual Battery Rack
- » Two 30lb Bottles with Cover and Auto Changeover
- » Awning Color Coordinated
- » Heated and Enclosed Underbelly
- » Fender Skirts
- » Diamond Plate

- » Exterior Speakers
- » Black Radius Window Frames
- » TV Antenna with Booster
- » Radio Antenna
- » Roof Vents
- » Cable Hook Up
- » GFI Electrical Outlets
- » Seamless One Piece Roof
- » Radius Skirting
- » Full Basement Storage on all Hornets Under Queen Bed
- » Hose Storage in the Bumper
- » R-9 Insulation Throughout
- » Rain Gutters with Down Spouts
- » Four Stage Slide Room Seals
- » Roto-Cast Seamless Holding Tank

INTERIOR

- » LCD TV
- » 13,500 BTU Air Conditioner

- » True Sound Entertainment System with AM/FM, CD, DVD, MP3 Jack
- » Foam Core Insulated A/C Ducts
- » Wallpaper Border
- » 72" Slide Ceiling Height
- » 30,000 BTU Furnace
- » 6 Gallon Gas/Electric DSI Quick Recovery Water Heater
- » Heater with By-Pass Kit
- » Flex Pex Tubing with 10 Year Warranty
- » Ball Bearing Drawer Guides
- » Wall Switches for the Lights
- » RG6 Cable and Satellite Wiring
- » Sculptured Valances with Lambrequins
- » Panoramic Dinette Window
- » Deep Slide Room Cabinets
- » Shirt Closets
- » 60" BY 80" Hide-A-Bed Sofa

BEDROOM

- » TV Hook Up
- » Bedsread-Master Bedroom

- » Bed Storage with Air Shocks
- » Cabinets Above Queen Bed
- » Reading Light

BATH

- » Porcelain Foot-Flush Toilet
- » Tub Surround
- » Shower Exhaust Fan
- » Large Medicine Cabinet
- » Robe and Towel Hooks

KITCHEN

- » 12 Volt Shur Flo Water Pump
- » Three Drawers
- » Silverware Divider
- » Holding Tank Monitor Panel
- » Range with Hi-Output Burner
- » 6 cu foot Refrigerator (5 Settings)
- » Exhaust Fan with Light
- » Microwave
- » Reversible Dinette Cushions
- » Largest Residential Kitchen Sink

- » High Rise Kitchen Faucet
- » Waste Basket Storage
- » Pre-Drilled & Screwed Residential Cabinetry Throughout
- » Mortise and Tenon Door Joints
- » Raised Panel Upper Cabinet Doors
- » Overhead Cabinets Above the Sink
- » Sink Cover
- » Heavy Duty Ball Bearing Drawer Glides
- » Counter Top Extensions

OPTIONS

- » Spare Tire Carrier/Cover
- » Rear Ladder
- » Two Swivel Rockers (31RLDS)
- » Free Standing Dinette
- » 15,000 BTU Air Conditioner



**Keystone RV
Company**

2642 HACKBERRY DRIVE | P.O. BOX 2000
GOSHEN, IN 46527 | 574.535.2100 | WWW.KEYSTONE-RV.COM



HIDEOUT
www.keystone-hideout.com



HORNET
www.keystone-hornet.com