

STORM® 2012

FLEETWOOD RV | CLASS A GAS



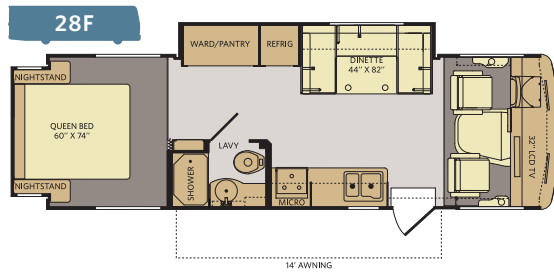
Red Velvet

TOP FEATURES

- Single-Piece Windshield
- Glazed Hardwood Cabinet Doors with Hidden Hinges
- Bunk Bed and Breakfast (Select Models)
- Hide-A-Loft Feature
- High-Gloss Exterior Fiberglass
- Full Basement Storage
- Flexsteel® Furniture
- PEX Plumbing System

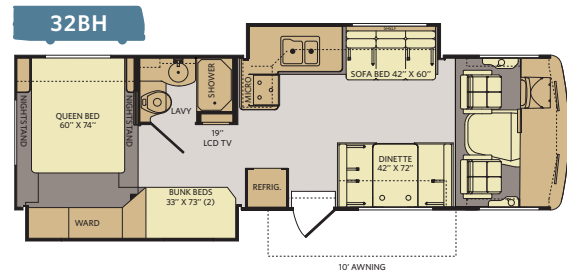


New Penny



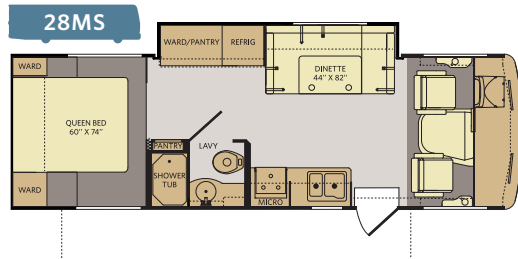
INTERIOR STORAGE CAPACITY: 110 CU. FT.
EXTERIOR STORAGE CAPACITY: 132 CU. FT.

Available options: 084, 218, 664



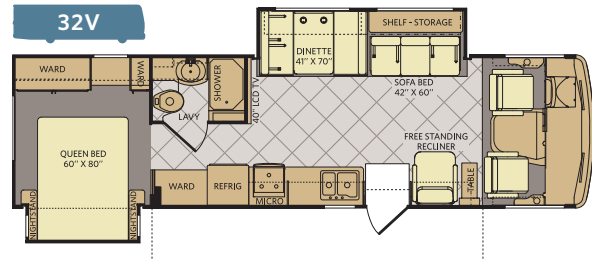
INTERIOR STORAGE CAPACITY: 119 CU. FT.
EXTERIOR STORAGE CAPACITY: 104 CU. FT.

Available options: 084, 097, 157, 218, 860/864



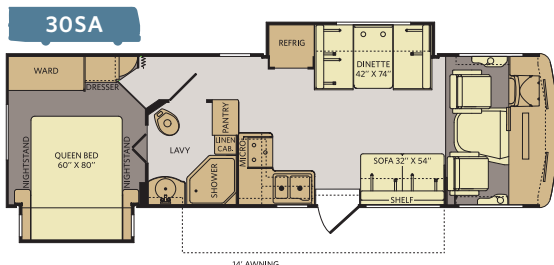
INTERIOR STORAGE CAPACITY: 125 CU. FT.
EXTERIOR STORAGE CAPACITY: 132 CU. FT.

Available options: 084, 218, 664



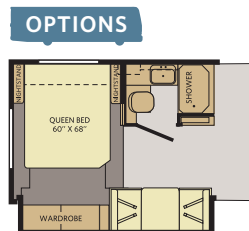
INTERIOR STORAGE CAPACITY: 138 CU. FT.
EXTERIOR STORAGE CAPACITY: 112 CU. FT.

Available options: 084, 217, 664

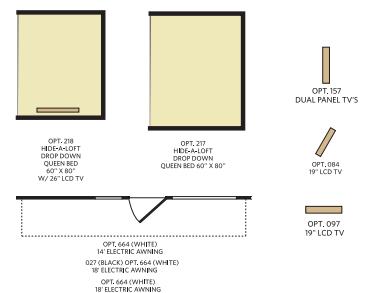


INTERIOR STORAGE CAPACITY: 126 CU. FT.
EXTERIOR STORAGE CAPACITY: 102 CU. FT.

Available options: 084, 218, 664



OPT. 860/864
DINETTE W/ SWING DOWN BUNK
30" X 70" DINETTE / 28" X 70" BUNK



WEIGHTS & MEASUREMENTS

CHASSIS	FORD*				
MODELS	28F	28MS	30SA	32BH	32V
Engine Displacement (liters)	6.8	6.8	6.8	6.8	6.8
Wheelbase (inches)	178"	178"	190"	190"	208"
GVWR (lbs) ¹	18,000	18,000	18,000	18,000	18,000
Front GAWR (lbs) ²	7,000	7,000	7,000	7,000	7,000
Rear GAWR (lbs) ²	12,000	12,000	12,000	12,000	12,000
GCWR (lbs) ³	23,000	23,000	23,000	23,000	23,000
Hitch Rating Weight (lbs) ¹	5,000	5,000	5,000	5,000	5,000
Tongue Weight (lbs) ¹	500	500	500	500	500
Fuel Capacity (gal)	80	80	80	80	80

FORD CHASSIS

Model: Ford*
Engine: 6.8L Triton V10
Transmission: Ford*, 5-Speed, Automatic w/Overdrive

Alternator: 175 Amp
Torque: 457 lb-ft @ 3,250 RPM
Horsepower: 362HP

DIMENSIONS & CAPACITIES

MODELS	28F	28MS	30SA	32BH	32V
Overall Length ⁴	28' 8"	28' 8"	31'	31'	32' 9"
Overall Height (with A/C)	12'	12'	12'	12'	12'
Overall Width (maximum) ^{5, 6}	102"	102"	102"	102"	102"
Interior Height (maximum)	82"	82"	82"	82"	82"
Interior Width (maximum)	96"	96"	96"	96"	96"
Fresh Water Holding Tank (gal)	60	60	60	60	60
Grey Water Holding Tank (gal)	35	35	35	35	37
Black Water Holding Tank (gal)	35	35	35	35	37
Appliance Propane Tank (gal) (WC) ⁷	14	14	14	14	14
Water Heater Tank (gal)	6	6	6	6	6

Liquid Weight Reference:

Water (gal) = (8.3 lbs/3.8 kgs) Fuel (gal) = (6.1 lbs/2.8 kgs) Propane (gal) = (4.2 lbs/1.9 kgs)

Metric Conversion:

Multiply pounds x 0.453 to obtain kilograms. Multiply gallons x 3.785 to obtain liters.
 Multiply liters x 61 to obtain cubic inches.

Disclaimers

- GVWR (Gross Vehicle Weight Rating) is the maximum permissible weight of this fully loaded motor home. The GVWR is equal to or greater than the sum of the (UVW) unloaded vehicle weight plus the (OCCC) occupant cargo-carrying capacity.*
- GAWR (Gross Axle Weight Rating) is the maximum permissible loaded weight a specific axle is designed to carry.
- GCWR (Gross Combined Weight Rating) is the value specified by the motor home manufacturer as the maximum allowable loaded weight of this motor home with its towed vehicle. Towing and braking capacities may be different. Refer to Fleetwood and chassis manufacturer's manuals for complete information.
- Length measured from front bumper to rear bumper (excludes accessories).
- Excludes safety equipment and awnings.
- Motor homes feature a body width over 96" which will restrict your access to certain roads. Before purchasing, you should research any state and/or province road laws which may affect your usage.
- Tank manufacturer's listed water capacity (WC). Actual propane capacity is 80% of water listing as required by the safety code.

† The chassis manufacturer recommends the installation of a supplemental brake control system to activate the brakes on the vehicle or trailer you are towing. Hitch receiver ratings expressed are maximum for the hitch receiver installed and may require the purchase of additional equipment that is dependent on the weight of the towed load. Consult with hitch receiver manufacturer for further information.

* UVW and OCCC are found on the label containing the federal certification tag in each RV.

RV OWNERCARE**

Limited one-year/15,000-mile coach warranty and three-year/45,000-mile structural warranty, whichever occurs first, and it is fully transferable for the first 12 months. RV OWNERCARE is one of the RV industry's most comprehensive programs and includes systems, appliances, components and construction, with no deductible and no service charge. RV OWNERCARE coverage is provided by a company that will be around in the future to service your needs. See your nearest Fleetwood RV dealer for a full explanation of benefits and restrictions.

CONTACT US

To locate a dealer near you, visit our website at www.fleetwoodrv.com or call 1-800-322-8216. We can also be contacted at Fleetwood RV Customer Relations, P.O. Box 1007, Decatur, IN 46733.

FLEETWOOD RV MOTOR HOME CLUBS

As a Fleetwood RV owner, you're invited to become a member of several Fleetwood RV motor home clubs. Becoming a club member is the perfect way to meet other Fleetwood owners who love to travel across America and share in the RV lifestyle. Visit our website at www.fleetwoodrv.com/owners_clubs to learn more and join the fun.

IMPORTANT—PLEASE READ

Product information, photography and illustrations included in this publication were as accurate as possible at the time of printing. For further product information and changes, please visit our website at www.fleetwoodrv.com or contact your local Fleetwood RV dealer. Prices, materials, design and specifications are subject to change without notice. All weights, fuel, liquid capacities and dimensions are approximate. Fleetwood RV has designed its recreational vehicles to provide a variety of uses for customers. Each vehicle features optimal seating, sleeping, storage and fluid capacities. The user is responsible for selecting the proper combination of loads (i.e., occupants, equipment, fluids, cargo, etc.) to ensure that the vehicle's capacities are not exceeded.



**All 2012 Fleetwood RV motor homes include a 1-year membership to Coach-Net. For complete info, see your Fleetwood RV dealer.

©2011 Fleetwood RV Inc. Printed in USA. Inventory Control Number ST12F1, 08/11. Model Year 2012, First Edition.

WHY FLEETWOOD RV?



Quality

There's no cutting corners. Skilled craftsmen build every Fleetwood RV for maximum durability and longevity.



Safety

You've got precious cargo. So we've engineered dozens of innovative safety features into our motor homes to give you more peace of mind.



Trust

More people trust Fleetwood RV. After all, we've spent over 60 years perfecting RVs, earning the loyalty of generations of RVers.



Service

Help is nearby with 24/7 emergency roadside assistance through Coach-Net®*. And when you need an upgrade or repair, you'll find Fleetwood RV dealers all across North America ready to assist you.



Passion

We're truly passionate about the RV lifestyle. Fleetwood RV was founded by RV enthusiasts, and that tradition continues today.



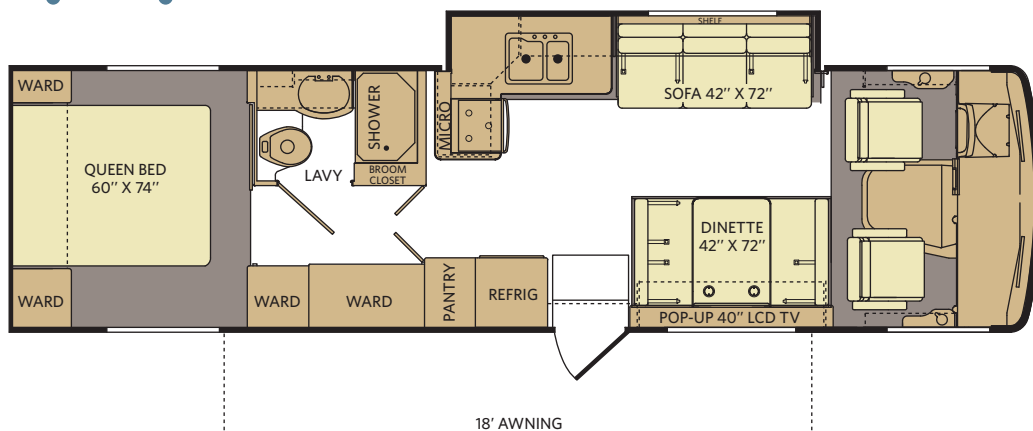
Warranty

Exclusive RV ownercare warranty. See your Fleetwood RV dealer for details.

STORM[®] 2012

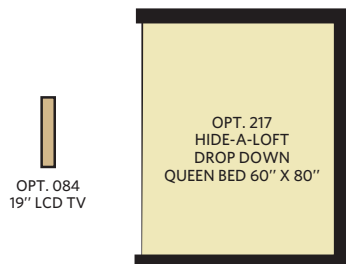
FLEETWOOD RV | CLASS A GAS

33Q



INTERIOR STORAGE CAPACITY: 128 CU. FT.
EXTERIOR STORAGE CAPACITY: 92 CU. FT.

OPTIONS:



FLOOR PLAN FEATURES:

- Single-Piece Windshield
- Glazed Hardwood Cabinet Doors with Hidden Hinges
- Hide-A-Loft Feature
- High-Gloss Exterior Fiberglass
- Full Basement Storage
- Flexsteel[®] Furniture
- Spacious 90\" Valted Ceilings
- PEX Plumbing System
- Low Entry Step
- 40\" LCD Pop-Up TV
- Expansive Wardrobe Storage
- Service/Broom Closet

WEIGHTS & MEASUREMENTS

CHASSIS	FORD [®]
MODELS	33Q
Engine Displacement (liters)	6.8
Wheelbase (inches)	208"
GVWR (lbs) ¹	18,000
Front GAWR (lbs) ²	7,000
Rear GAWR (lbs) ²	12,000
GCWR (lbs) ³	23,000
Hitch Rating Weight (lbs) ⁴	5,000
Fuel Capacity (gal)	80

FORD[®] CHASSIS

Model: Ford[®]
Engine: 6.8L Triton V10
Transmission: Ford[®] 5-Speed, Automatic w/Overdrive
Horsepower: 362HP
Alternator: 175 Amp
Torque: 457 lb-ft @ 3,250 RPM

DIMENSIONS & CAPACITIES

MODELS	33Q
Overall Length ⁴	33' 5"
Overall Height (with A/C)	12'
Overall Width (maximum) ^{5, 6}	102"
Interior Height (maximum)	90"
Interior Width (maximum)	96"
Fresh Water Holding Tank (gal)	60
Grey Water Holding Tank (gal)	37
Black Water Holding Tank (gal)	37
Appliance Propane Tank (gal) (WC) ⁷	14
Water Heater Tank (gal)	6

STORM



NEW PENNY

RED VELVET

- GVWR (Gross Vehicle Weight Rating) is the maximum permissible weight of this fully loaded motor home. The GVWR is equal to or greater than the sum of the (UVW) unloaded vehicle weight plus the (OCCC) occupant cargo-carrying capacity.*
 - GAWR (Gross Axle Weight Rating) is the maximum permissible loaded weight a specific axle is designed to carry.
 - GCWR (Gross Combined Weight Rating) is the value specified by the motor home manufacturer as the maximum allowable loaded weight of this motor home with its towed vehicle. Towing and braking capacities may be different. Refer to Fleetwood and chassis manufacturer's manuals for complete information.
 - Length measured from front bumper to rear bumper (excludes accessories).
 - Excludes safety equipment and awnings.
 - Motor homes feature a body width over 96" which will restrict your access to certain roads. Before purchasing, you should research any state and/or province road laws which may affect your usage.
 - Tank manufacturer's listed water capacity (WC). Actual propane capacity is 80% of water listing as required by the safety code.
- *UVW and OCCC are found on the label containing the federal certification tag in each RV.