

adventure, inspired by  
**AIRSTREAM**



Minimalist design  
for maximum functionality.

## *Sterling*

Wherever you go, there you are – in style – with the latest design innovation from Christopher C. Deam. With a spatial and contemporary vibe, you'll bring your style wherever you go with the new Airstream International Sterling. Keeping the design impressively simple provides all the amenities you need without clutter or compromise.

Only the International Sterling blends innovative modernist design sense with the human form-factor friendly layouts Airstream is renowned for. You get the best design in the most livable space – fresh, clean colors and sleek metal surfaces coupled with inviting Ultraleather



**27FB International Sterling in Obsidian Violet Décor**

seating and LED lighting for a cool environment that stays that way. Storage surfaces are easy to maintain and their bespoke features are easy to admire. Premium fixtures, HD TVs and premium sound systems create an inviting space that blends minimalist cache with a party-starting, media-driven atmosphere. By marrying a future-forward interior with the iconic "aero-exterior", only Airstream could bring the SoHo-loft-meets-spaceship vibe to the most unique travel trailer ever. Make it your mobile pied à terre and let the envy begin.

Designed by Christopher C. Deam & built by Airstream.

**27FB INTERNATIONAL STERLING**

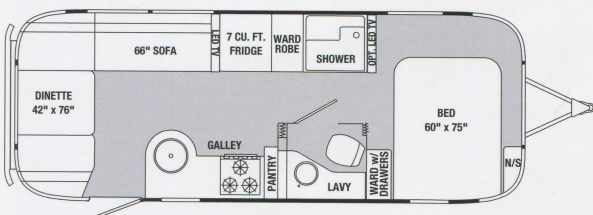




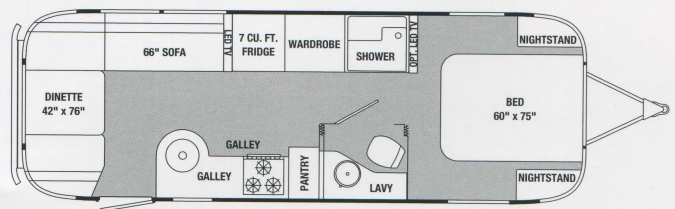
27FB International Sterling in Arctic Dijon Décor



**International Sterling Floorplans**



25FB International Sterling



27FB International Sterling



### INTERNATIONAL STERLING TECHNICAL SPECIFICATIONS

	25FB	27FB
Exterior Length	25' 11"	28'
Width Exterior	8' 5.5"	8' 5.5"
Width Interior	8' 1"	8' 1"
Height Exterior w/A/C	9' 7"	9' 7"
Height Interior w/A/C	6' 5"	6' 5"
Hitch Weight (w/LP & w/o options, water & cargo) (lbs.)	833	770
Unit Base Weight (w/LP & w/o options, water & cargo) (lbs.)	5,612	5,824
Gross Vehicle Weight Rating (lbs.)	7,300	7,600
Axles	2	2
Net Carrying Capacity (NCC=GVWR-UBW) (lbs.)	1,688	1,776
Fresh Water Tank w/drain valve (gal.)	39	39
Black Water Tank (gal.)	39	39
Gray Water Tank (gal.)	37	37
Water Heater w/electronic ignition (gal.) (XT)	6	6
A/C w/heat pump (BTU)	15,000	15,000
Furnace (BTU)	25,000	25,000
LPG (2-30 lb. steel tanks) (lbs.)	60	60
Deep Cycle Battery (lead acid) Group 24	2	2
Sleeping Capacity	2-5	2-5

### Interior Décors – International Sterling

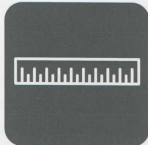
- Arctic Dijon
- Obsidian Violet



Axles



GVWR  
7,300 - 7,600 lbs



Length  
25'11" - 28'



Sleeps  
2-5

Please visit [www.airstream.com](http://www.airstream.com) to see a full set of model specifications, floorplans, features and options, and to find your nearest Airstream dealer.



27FB International Sterling Front to Back in Arctic Dijon Décor



adventure, inspired by  
**AIRSTREAM**

*International*



27FB International Sterling in Obsidian Violet Décor

Product information, specifications, and photography in this brochure were as accurate as possible at time of printing. Photographs may contain some features that are optional on your vehicle. Since we continually strive to improve our products, actual products may differ. Prices and specifications are subject to change without notice. All capacities are approximate and dimensions are nominal. Some features or options may be different or unavailable in Canada.

Vehicle Loading – Every effort has been made to provide the greatest number of options for the recreation vehicle owner. Along with these choices comes the responsibility to manage the loads that are imposed by the choices so that they remain within the manufacturer’s specified chassis weight limits. Do not overload the recreation vehicle.

Dry Weights - based on standard features; optional equipment not included. Net Carrying Capacity (NCC) is determined by subtracting Unit Base Weight (UBW) from the Gross Vehicle Weight Rating (GVWR), and is the capacity available for water, options and cargo. Liquid capacities and weights are approximations only.

Warning – This information is intended as a guide only. Weights of individual vehicles may vary. Consult your owner’s manual for complete loading, weighing, and towing instructions.



*Sterling*

Airstream now offers  
 24/7 roadside  
 service & technical  
 assistance provided  
 by CoachNet.

**Coach-Net**

RV Membership Plans



**nmc**  
 NATIONAL MOTOR CLUB

Airstream, Inc.  
 419 West Pike Street  
 P.O. Box 629  
 Jackson Center, OH  
 45334 USA  
 937-596-6111  
 www.airstream.com

All content and images  
 © Airstream 2013 & 2014

Sterling 12k 8/13



Airstream is a subsidiary of Thor Industries, Inc.