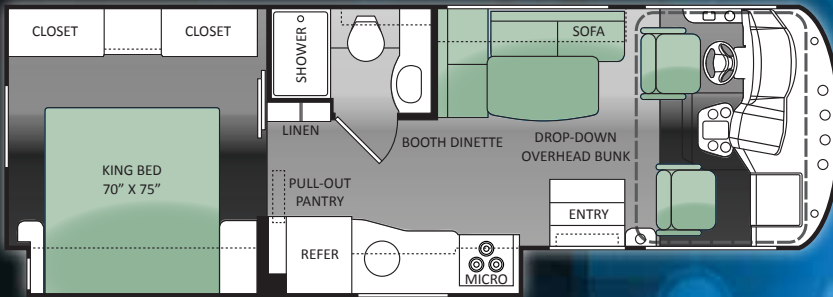
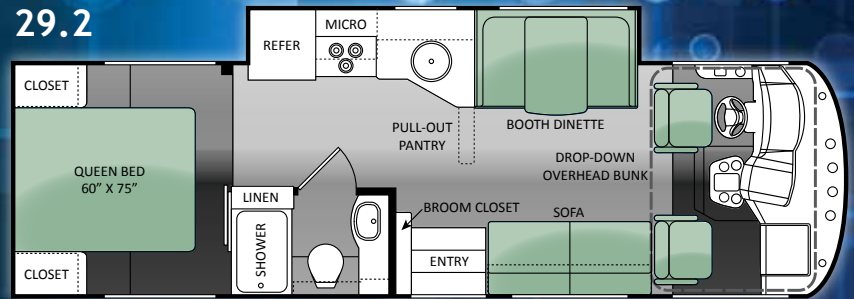


FLOOR PLANS

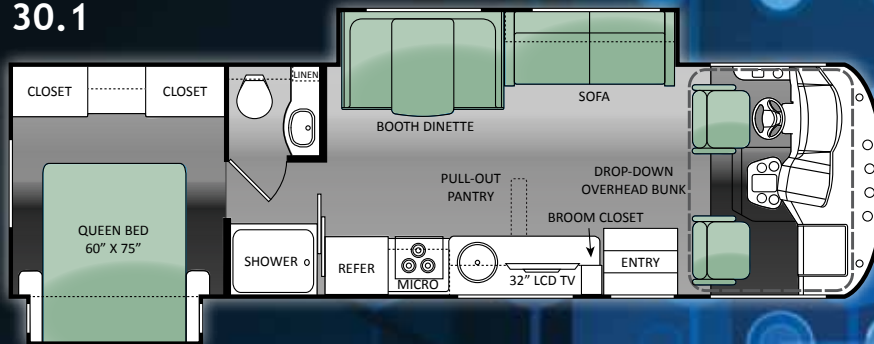
27.1



29.2



30.1



DECOR



OLYMPIC CHERRY



VINTAGE MAPLE



BLACK FORREST



HAZELNUT



JEWEL

SPECS

MODEL

	27.1	29.2	30.1
Chassis	Ford	Ford	Ford
Gross Vehicle Weight Rating (GVWR)	16,000	16,000	18,000
Gross Combined Weight Rating (GCWR)	23,000	23,000	23,000
Wheel Base	178"	190"	190"
Exterior Length (without ladder)	28'7"	29'7"	30'10"
Exterior Height (with air conditioning)	11' 11"	11' 11"	11' 11"
Exterior Width (without mirrors)	99"	99"	99"
Interior Height	84"	84"	84"
Awning Size	14'	14'	14'
Fuel (gallons)	80	80	80
LPG (pounds)	88	88	88
Fresh Water (gallons)	50	50	50
Grey Water (gallons)	44	44	44
Waste Water (gallons)	29	24.5	24.5
Water Heater (gallons)	6	6	6
Furnace (BTUs)	34,000	34,000	34,000
Exterior Storage Capacity (cubic feet)	93	122.6	68

STANDARD & OPTIONS

CONSTRUCTION & EXTERIOR

- One-Piece Fiberglass Front Cap
- Slick Fiberglass Sidewalls
- Exterior Graphics Package
- Rear Mega Storage Compartment
- Skid Resistant Metal Storage Compartments
- Multi-Purpose Tie-Down
- Electric Patio Awning
- Rubber Tread Entry Steps with Utility Storage & Mud Room Compartment
- Automatic Electric Entry Step
- Outside Shower

CONSTRUCTION & EXTERIOR OPTIONS

- Roof Ladder
- HD-Max™ Exterior with Graphics Package
- Full Body Paint Package
- Fully Automatic Hydraulic Leveling Jacks

AUTOMOTIVE & COCKPIT

- Premium AM/FM Dash Radio with CD Player & LCD Back-up Monitor with Camera
- Leatherette Driver & Passenger Captain's Chairs
- Deluxe Exterior Mirrors
- 19.5" Tires
- Stainless Steel Wheel Liners
- 5,000 lbs Trailer Hitch

AUTOMOTIVE & COCKPIT OPTIONS

- Heated/Remote Exterior Mirrors with Integrated Side View Cameras

INTERIOR

- 84" Interior Ceiling Height
- Residential Linoleum [Galley, Living Room & Bath]

- 13,500 BTU Roof Air Conditioner
- Olympic Cherry Cabinetry
- Hardware with Nickel Silver Finish
- Leatherette Convertible Sofa [29.2 & 30.1]
- Leatherette Convertible L-Shape Sofa with Free Standing Dinette Table [27.1]
- Wrap Around Leatherette Booth Dinette [29.2 & 30.1]
- Electric Fold-Away Overhead Front Bunk
- Night Shades

INTERIOR OPTIONS

- 15,000 BTU Roof Air Conditioner
- Vintage Maple Cabinetry

GALLEY

- Double-Door Refrigerator
- 3-Burner High-Output Gas Cooktop with Oven
- Microwave Oven
- Laminate Countertops
- Oversized Bowl Sink with Single Lever Gooseneck Faucet
- Pull-Out Pantry
- Coat/Broom Closet with Hanging Hooks
- Waste & Recycling Containers
- Full Extension Metal Drawer Guides

ENTERTAINMENT

- 26" LCD Television in Living Area [27.1 & 29.2]
- 32" LCD Television in Living Area [30.1]
- Satellite & Cable Television Prep

ENTERTAINMENT OPTIONS

- LCD Television with DVD Player in Bedroom

BEDROOM & BATHROOM

- Queen Size Bed [29.2 & 30.1]
- King Size Bed [27.1]
- Linen Closets in the Hallway & Bathroom [27.1 & 29.2]
- Linen Closet in Bathroom [30.1 Only]
- Pull-Out Drawer with FDA Approved Pet Bowl Liner
- Wardrobe in Bedroom
- China Bowl Toilet
- Shower with Micro Anti-Bacterial Shower Curtain

BEDROOM & BATHROOM OPTIONS

- Fantastic Fan in Bathroom

SAFETY & CONVENIENCE

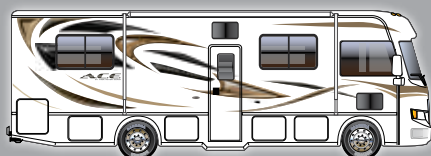
- Entry Door with Deadbolt Lock
- Systems Control Center
- Smoke, LPG & Carbon Monoxide Detectors
- Fire Extinguisher
- Valve Stem Extenders

ELECTRICAL & PLUMBING

- Onan RV QG 4000 Gas Generator
- Battery Disconnect Switch
- Emergency Start Switch
- 30-amp Service with Marine-Type Detachable Power Cord
- "Below-Floor" Mounted 6-gallon Gas Water Heater with DSI
- "Below-Floor" Mounted 34,000 BTU LP Furnace
- Water Heater Bypass System
- Heated & Enclosed Holding Tanks

ELECTRICAL & PLUMBING OPTIONS

- Second Auxiliary Battery



STANDARD GRAPHICS



SUMMER BREEZE FULL BODY PAINT



TWILIGHT DAWN FULL BODY PAINT



CASCADE HD-MAX™



LUCKY PENNY HD-MAX™

IMPORTANT - PLEASE READ: Information published within this brochure reflects product design, fabrication, material, components and specifications at the date of printing. If your vehicle was manufactured before this brochure was published this information may not be accurate because vehicles assembled before the brochure was published may not have the same design, fabrication, materials, components and specification as represented in the brochure. If your vehicle was manufactured after this sales brochure was published the representations may not be accurate because, for product improvement reasons, we reserve the unilateral right, at any time, without prior notice, to make changes in product design, material, components and specifications. The date the brochure was published (i.e. "Julian date") is set forth on the last page of the brochure. IF CERTAIN INFORMATION PUBLISHED WITHIN THIS BROCHURE IS SIGNIFICANT TO YOUR PURCHASING DECISION, PLEASE CONSULT WITH YOUR SELLING DEALERSHIP TO CONFIRM THAT THE INFORMATION IS ACCURATE WITH RESPECT TO THE VEHICLE YOU ARE CONSIDERING PURCHASING. Photographs in the brochure may depict optional equipment or may only be available in certain floor plans. We reserve the right to make changes in prices and models and to discontinue models without notice or obligation. Components, appliances and the chassis may have been manufactured in a calendar year before the vehicle's designated model year. All capacities are approximate. The actual length of the vehicle may differ from that indicated in the brochure due to variances in the manufacturing processes and/or installed components. All dry weights are based on standard model features and do not include optional features or equipment. Components, appliances and features may differ to conform to local codes. Due to EPA environmental restrictions, engine power and torque ratings may change during any model year. The Thor Motor Coach logo and its design are registered trademarks. Other products and company names are trademarks and/or registered trademarks of their respective manufacturer. While the color of the motorhome's exterior and the interior fabrics depicted in this brochure are fair and reasonable depictions, the colors depicted may not be exact match of the actual colors because of variances in photo processing and printing. Component part and appliance manufacturers issue limited warranties covering portions of the vehicle not covered under the limited warranty we issue. To learn specific details regarding warranty coverage please consult your selling dealership or review the warranty packet inside the vehicle.



YOUR LOCAL TMC DEALER:



Go RVing.