

EXPEDITION® 2013

CLASS A DIESEL | **FLEETWOOD RV**



Scarlet Rose



Copper Mist



Cocoa Pearl



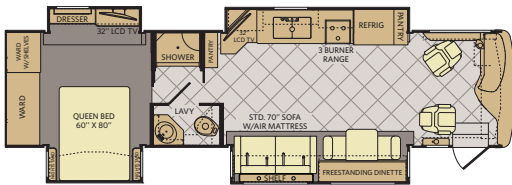
Polar Ice

TOP FEATURES

- 360HP Cummins® ISB 6.7L Engine
- Sony® A/V Electronics
- 8.0 kW Onan® Quiet Diesel Generator
- Quick Recovery Water Heater w/Direct Spark Ignition (Gas/Electric)
- MCD Double-Roller Shades
- Side Swinging Luggage Doors
- 84" Interior Ceiling Height
- Solid Surface Countertops
- Crown Molding
- Porcelain Flooring w/ Decorative Tile Inserts
- Molded Fiberglass Roof
- Chrome Mirrors w/Side View Cameras
- Aluminum Wheels



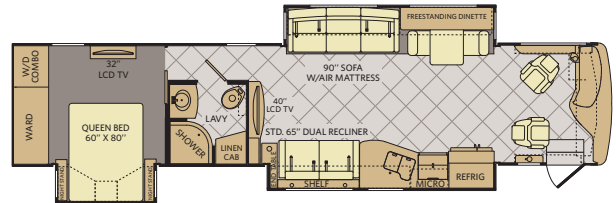
36M



INTERIOR STORAGE CAPACITY: 221 CU. FT.
EXTERIOR STORAGE CAPACITY: 139 CU. FT.

Available options: 087, 131, 144, 830, 853, 854, 855, 856

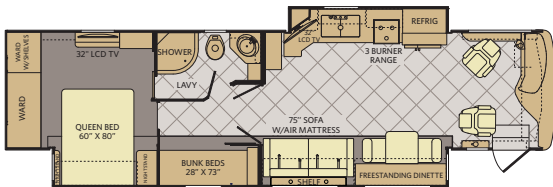
40X



INTERIOR STORAGE CAPACITY: 197 CU. FT.
EXTERIOR STORAGE CAPACITY: 208 CU. FT.

Available options: 087, 116, 131, 144, 191, 635, 830, 853, 854, 855, 856

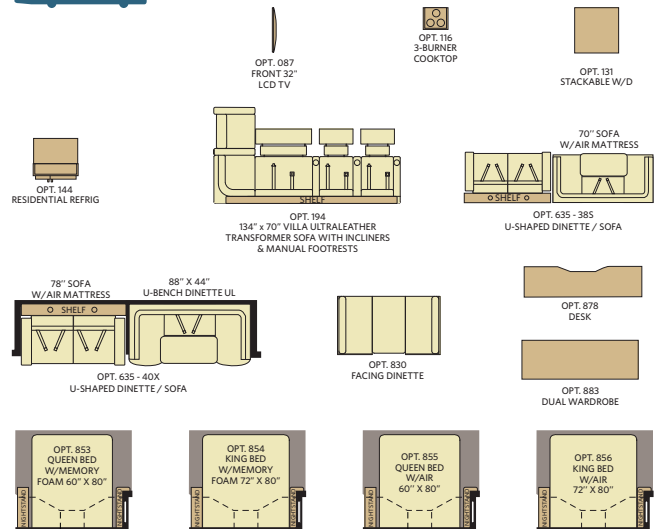
38B



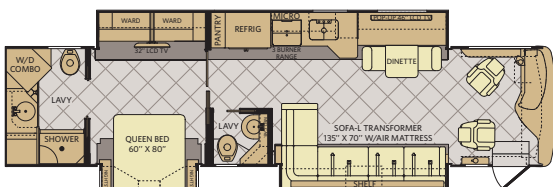
INTERIOR STORAGE CAPACITY: 217 CU. FT.
EXTERIOR STORAGE CAPACITY: 181 CU. FT.

Available options: 087, 131, 144, 635, 830, 853, 854, 855, 856, 878, 883

OPTIONS



38S



INTERIOR STORAGE CAPACITY: 138 CU. FT.
EXTERIOR STORAGE CAPACITY: 112 CU. FT.

Available options: 087, 116, 131, 144, 194, 853, 854, 855, 856

WEIGHTS & MEASUREMENTS

| CHASSIS MODELS | POWER BRIDGE® | | | |
|---|---------------|--------|--------|--------|
| | 36M | 38B | 38S | 40X |
| Wheelbase (inches) | 228" | 252" | 252" | 276" |
| GVWR (lbs) ¹ | 32,400 | 32,400 | 32,400 | 32,400 |
| Front GAWR (lbs) ² | 12,400 | 12,400 | 12,400 | 12,400 |
| Rear GAWR (lbs) ² | 20,000 | 20,000 | 20,000 | 20,000 |
| GCWR (lbs) ³ | 39,900 | 42,400 | 42,400 | 42,400 |
| Hitch Rating Weight (lbs) ^{1,††} | 7,500 | 10,000 | 10,000 | 10,000 |
| Tongue Weight (lbs) ¹ | 750 | 1,000 | 1,000 | 1,000 |
| Fuel Capacity (gal) | 100 | 100 | 100 | 100 |

POWER BRIDGE® CHASSIS

Model: Freightliner® XCM Series
Engine: Cummins® ISB 6.7L
Transmission: Allison® 3000 MH 6-Speed
 w/Electronic Shifter

Alternator: Delco Remy 160 Amp
Torque: 800 lb-ft @ 1,800 RPM
Horsepower: 360HP

DIMENSIONS & CAPACITIES

| MODELS | 36M | 38B | 38S | 40X |
|--|----------|----------|----------|----------|
| Overall Length ⁴ | 36' 7.5" | 38' 7.5" | 38' 7.5" | 41' 7.5" |
| Overall Height (with A/C) | 12' 10" | 12' 10" | 12' 10" | 12' 10" |
| Overall Width (maximum) ^{5, 6} | 102" | 102" | 102" | 102" |
| Interior Height (maximum) | 84" | 84" | 84" | 84" |
| Interior Width (maximum) | 96" | 96" | 96" | 96" |
| Fresh Water Holding Tank (gal) | 105 | 105 | 105 | 105 |
| Grey Water Holding Tank (gal) | 75 | 75 | 75 | 75 |
| Black Water Holding Tank (gal) | 50 | 50 | 50 | 50 |
| Appliance Propane Tank (gal) (WC) ⁷ | 38.7 | 38.7 | 38.7 | 38.7 |
| Water Heater Tank (gal) | 10 | 10 | 10 | 10 |



FLEETWOOD RV IS AN ALLIED SPECIALTY VEHICLE COMPANY.



Addendums

- GVWR (Gross Vehicle Weight Rating) is the maximum permissible weight of this fully loaded motorhome. The GVWR is equal to or greater than the sum of the (UVW) unloaded vehicle weight plus the (OCCC) occupant cargo-carrying capacity*.
- GAWR (Gross Axle Weight Rating) is the maximum permissible loaded weight a specific axle is designed to carry.
- GCWR (Gross Combined Weight Rating) is the value specified by the motorhome manufacturer as the maximum allowable loaded weight of this motorhome with its towed vehicle. Towing and braking capacities may be different. Refer to Fleetwood and chassis manufacturer's manuals for complete information.
- Length measured from front bumper to rear bumper (excludes accessories).
- Excludes safety equipment and awnings.
- Motorhomes feature a body width over 96" which will restrict your access to certain roads. Before purchasing, you should research any state and/or province road laws which may affect your usage.
- Tank manufacturer's listed water capacity (WC). Actual propane capacity is 80% of water listing as required by the safety code.

† The chassis manufacturer recommends the installation of a supplemental brake control system to activate the brakes on the vehicle or trailer you are towing. Hitch receiver ratings expressed are maximum for the hitch receiver installed and may require the purchase of additional equipment that is dependent on the weight of the towed load. Consult with hitch receiver manufacturer for further information.

* UVW and OCCC are found on the label containing the federal certification tag in each RV.

†† The Minimum Towable Load of this vehicle is the available weight capacity, up to GCWR, when the coach is fully loaded to maximum GVWR. However, if the coach is loaded to something less than maximum GVWR, that extra available weight capacity can be added to your Towable Load. For example, if your coach is loaded to 1000lbs less than maximum GVWR, your Towable Load increases accordingly. Do not exceed the hitch rating weight, GVWR or GCWR.

IMPORTANT—PLEASE READ

Product information, photography and illustrations included in this publication were as accurate as possible at the time of printing. For further product information and changes, please visit our website at www.fleetwoodrv.com or contact your local Fleetwood RV dealer. Prices, materials, design and specifications are subject to change without notice. All weights, fuel, liquid capacities and dimensions are approximate. Fleetwood RV has designed its recreational vehicles to provide a variety of uses for customers. Each vehicle features optimal seating, sleeping, storage and fluid capacities. The user is responsible for selecting the proper combination of loads (i.e., occupants, equipment, fluids, cargo, etc.) to ensure that the vehicle's capacities are not exceeded.

CONTACT US

To locate a dealer near you, visit our website at www.fleetwoodrv.com or call 1-800-322-8216. We can also be contacted at Fleetwood RV Customer Relations, P.O. Box 1007, Decatur, IN 46733.



** All 2013 Fleetwood RV motorhomes include a 1-year emergency Fleetwood RV Trusted Roadside Assistance membership. For complete info, see your Fleetwood RV dealer.

©2012 Fleetwood RV Inc. Printed in USA. Inventory Control Number EXP13F2, 11/12. Model Year 2013, Second Edition.