

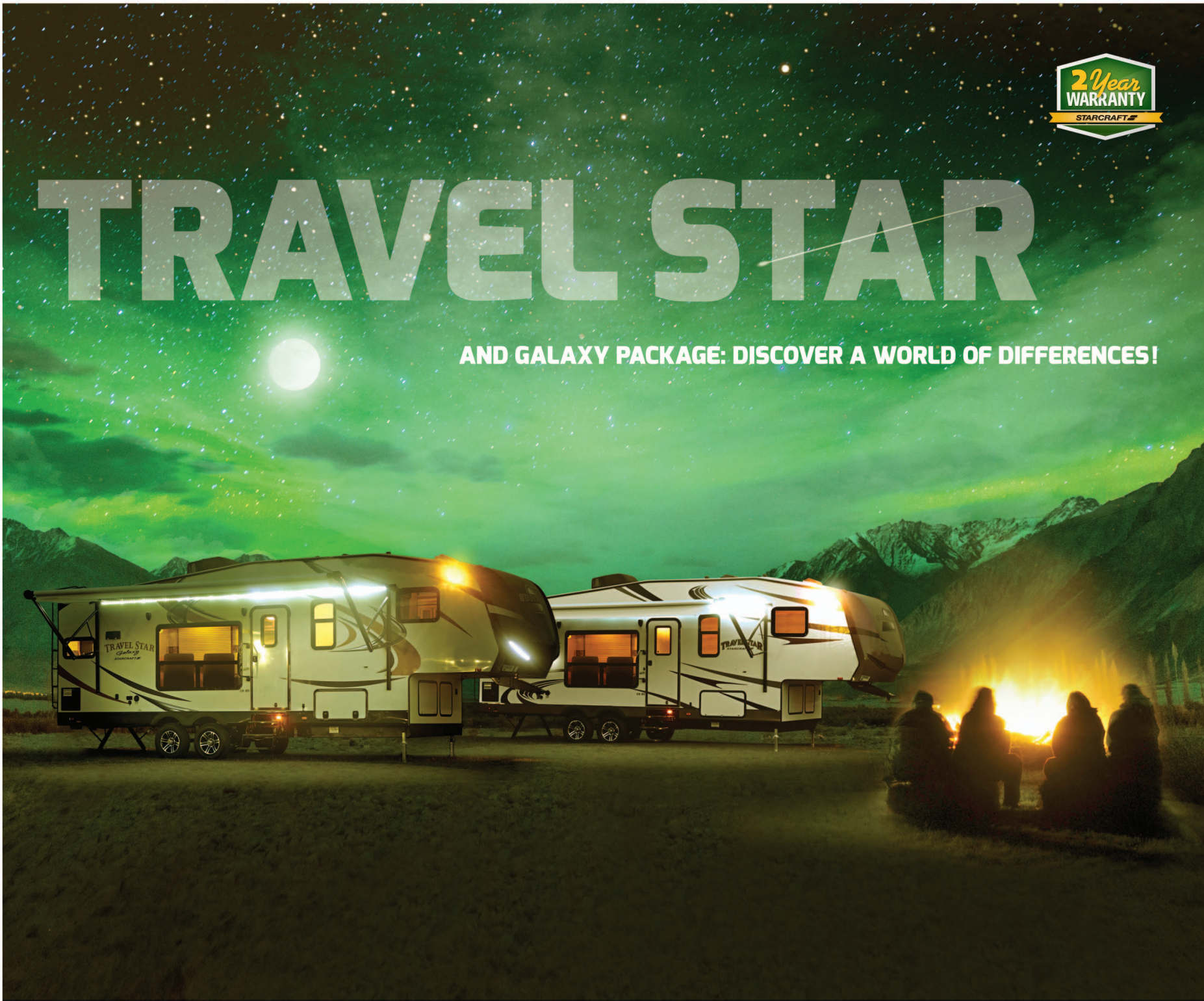
**STARCRAFT**

THE FUTURE OF CAMPING | pure and simple.

**TRAVEL STAR & GALAXY** MIDLINE FIFTH WHEELS

# TRAVEL STAR

AND GALAXY PACKAGE: DISCOVER A WORLD OF DIFFERENCES!



# TRAVEL STAR GALAXY

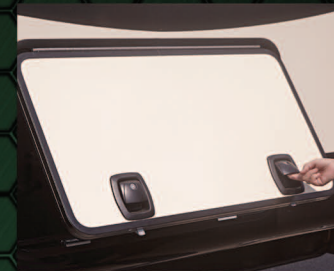


Model 276RKS Galaxy shown.



## **GALAXY BLACK PEARL EDITION.**

The optional Galaxy Black Pearl features upgrades like cream-colored high-gloss gel-coated fiberglass side and rear walls, frameless windows, LED lighting, aluminum wheels, black front cap and more!



## **TOP QUALITY SLAM LATCHES.**

Oversized, pass-through baggage compartments feature large doors with slam latches and locks. The easiest-to-use and operate on the planet!



102" width allows for more hallway and bedroom living space!



### LIVING ROOM.

You'll find unique luxury standard features like our 21" round skylight with LED lighting, a sleeper sofa and brand name carpet—and options include recliner chairs, a fireplace and living room wallpaper border.

### KITCHEN.

Easy to spot quality with Honey Glazed Cherry wood cabinetry, backsplash, range cover, and hardwood fridge door, but quality goes beyond the surface with heavy-duty ball-bearing drawer guides and much more.

### BEDROOM.

All Starcraft fifth wheels feature 102" width vs. the industry's 96". This means more hallway space and bigger bedrooms. A Denver® quality mattress is standard for the 60" x 80" queen bed. See more standards on page 7.

### BATHROOM.

Large shower and glass door, solid-surface countertop, medicine cabinet with mirror, vinyl flooring and decorative hardware highlight your bathroom. Starcraft makes the best use of space. Check out our floorplans on page 6.

# TRAVEL STAR



Model 276RKS Travel Star with standard LED TV and optional fireplace.



## TRAVEL STAR STANDS OUT.

Gel-coated fiberglass exteriors are durable and easy to clean. Plenty of storage and room in our 102"-wide fifth wheels—industry standard is 96". You won't notice while towing, but you will while camping with the extra space inside.



## UNIVERSAL DOCKING CENTER.

All fifth wheels come with this convenient station for hook-ups including city water connection, black tank flush, water heater by-pass switch, soap dispenser and more. Shown here with optional outside shower.



Large 8 cu. ft. refrigerator is standard.



50 lb. drawer capacity!

### LIVING ROOM.

Standard, elegant living features include plush swivel rockers and sleeper sofa, Honey Glazed Cherry wood cabinetry, quality-built slide systems, multi-media sound system with radio/CD stereo, and more!

### KITCHEN.

Travel Star kitchens come with residential-style high-rise faucet, sink cover, spice rack, backsplash, microwave, large 8 cu. ft. refrigerator, oven with range cover, storage areas and Honey Glazed Cherry wood cabinetry.

### BEDROOM.

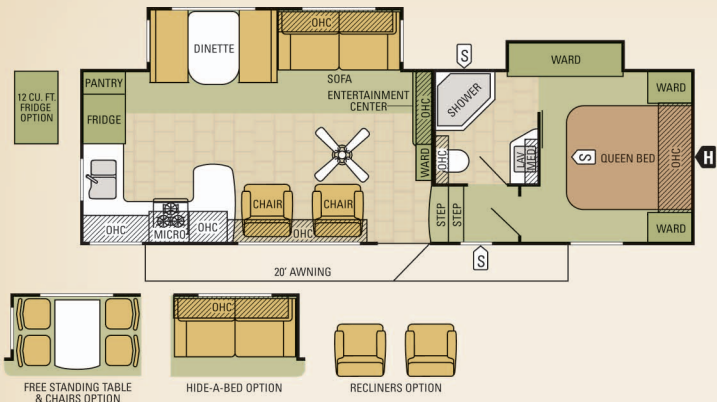
A 60" x 80" Queen Xtend-a-bed features a quality Denver® pillow-top mattress, under-bed storage and large wardrobes. See Travel Star Galaxy on page 3 for similar bedroom photo or visit our website for more.

### BATHROOM.

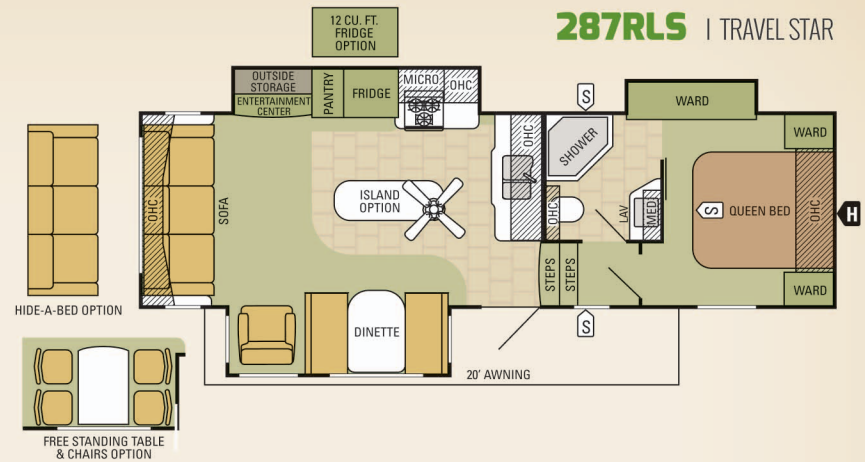
Well appointed and spacious bathrooms (see page 3 for photo reference) include all the conveniences of home, along with a standard 10-gallon water heater, large shower surround with glass door, skylights and much more.

# TRAVEL STAR & GALAXY FLOORPLANS

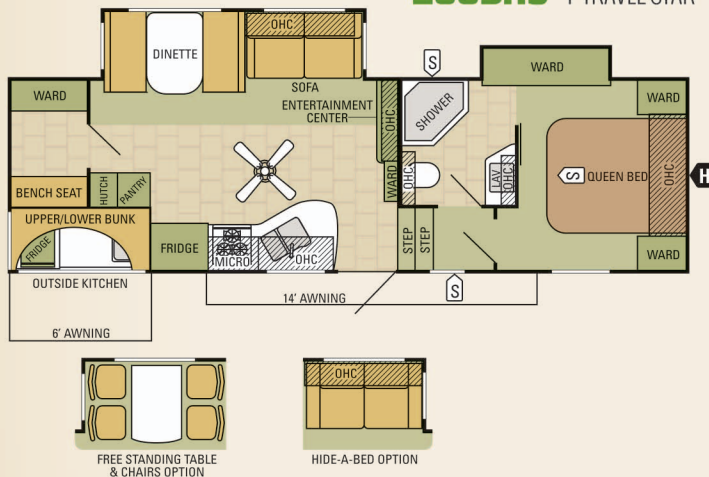
**276RKS** | TRAVEL STAR



**287RLS** | TRAVEL STAR



**288BHS** | TRAVEL STAR



## SPECIFICATIONS

	<b>276RKS</b>	<b>287RLS</b>	<b>288BHS</b>
Unloaded Vehicle Weight (lbs.)	7900	8375	7805
Dry Hitch Weight (lbs.)	1705	1965	1665
Gross Vehicle Weight Rating (lbs.)	10250	10750	10500
Cargo Carrying Capacity (lbs.)	2350	2375	2695
Exterior Length	31' 11"	32' 4"	31' 11"
Exterior Width	102"	102"	102"
Exterior Height with A/C	152"	148"	149"
Interior Height (bedroom)	76"	76"	76"
Wheel Base	246 - 1/2"	246 - 1/2"	240"
Fresh Water Capacity (gals.)*	72.6	72.6	72.6
Gray Wastewater Capacity (gals.)	61.6	30.8	61.6
Black Wastewater Capacity (gals.)	30.8	30.8	30.8
Sleeping Capacity	3-6	4-5	5-8

\*Includes water heater tank

## COLOR CHOICES



MOCHA

WALNUT

SAND

COUNTERTOP

FLOORING

# UFO

## UNBELIEVABLE FEATURES & OPTIONS.

### POPULAR STANDARD FEATURES

- 102"-Wide Exterior (6" Wider Hallways)
- Drop-Frame Front Basement Storage Area
- 5/8" Tongue-and-Groove Plywood Floor Decking w/Enclosed Underbelly (R-24)
- 6' Interior Slideout Height
- 10-gal. Gas/Electric DSI Water Heater
- Universal Docking Center
- 21" Round Skylight w/LED Lighting in Bedroom/Kitchen
- Ball-Bearing Drawer Guides (50-lb Capacity)
- Honey Glazed Cherry Wood Cabinetry
- 8 cu/ft Refrigerator
- Denver® Pillow-Top Mattress
- Electric Awning w/LED Lighting

### GALAXY PACKAGE (OPTIONAL)

- 6-Panel Residential-Trim Bathroom Door
- 24" LED TV in Bedroom
- Aluminum Rims
- Bedroom Carpet

- Rear Electric Stabilizer Jacks
- Hardwood Refrigerator Door Inserts
- Headboard with Integrated Shelf
- Black-Colored Front Cap
- Cream-Colored Hi-Gloss Gel-Coated Fiberglass Sidewalls and Rear Wall
- Frameless Windows
- LED Lighting Package
- Raised-Panel Cabinetry in Living Room and Kitchen
- Slam-Latch, Pass-Thru Storage Doors
- Upgraded Galaxy Graphics
- Wallpaper Border in Living Room

### POPULAR OPTIONS

- 24" LED TV in Bedroom (with Detachable Bracket for Outside Use)
- Arctic Insulation Package
- Frameless Windows
- Stainless Steel Appliance Package
- More Options Available

FOR OPTIONS AND MORE STANDARD FEATURES GO TO | [starcraftcamping.com](http://starcraftcamping.com)

## SPACE AGE CONSTRUCTION FEATURES.

For over 50 years Starcraft RV's reputation has been built around top-quality products, designed to provide years of trouble-free use and backed by a 2-year limited warranty. Innovation starts with a solid foundation. Compare us and you'll see just how much care and meticulous attention to "doing it right" goes into every Starcraft fifth wheel.



SEE THE FULL COMPARISON ONLINE AT [STARCRAFTCAMPING.COM](http://STARCRAFTCAMPING.COM)



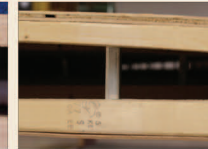
**US** 4,500 lbs. on a Starcraft roof!



**THEM** Same weight on a competitor's style roof.



**US** Vertical wood studs for added support.



**THEM** Little aluminum brace, if that.

## STRONGEST ROOF EVER!

Strength is one of the basic principles of engineering; the stronger something is built, the longer it will last. At Starcraft, we understand strength comes from within, which is why we focused on the smallest of details when constructing our exclusive Magnum Roof System. From sturdier vertical studs to 7" header beams, we pride ourselves on staying at the top of our game—building stronger products that last.



**US** We use large oversized nail plates on both sides.



**THEM** They use smaller and only on one side of truss.



Our optional Arctic Package extends your camping season, providing protection against cooler temperatures with its insulated, heated and enclosed underbelly.



Using TuffShell vacuum-bonded lamination, our walls combine welded aluminum framing, fiberglass sidewalls and metal backers, ensuring your camper can handle the toughest conditions.

# TRAVEL STAR. THE FUTURE OF CAMPING JUST GOT BRIGHTER!



**LANDED IN 1964.** Starcraft is one of the oldest and most respected names in the RV industry. In fact, we've been around since 1903. Back then, we made our name building livestock tanks and other metal farm equipment. In the 1920's, we added a variety of boats to our product lineup. And in 1964, we entered—and revolutionized—the modern camping industry.

## GET MORE OF WHAT YOU NEED IN CYBERSPACE.



Explore more Starcraft RVs by visiting our world-class website. This advanced, digital-age-friendly site offers more product photo galleries, construction information, videos, the latest floorplans, specifications and other great features to assist you. Find your closest dealer, customer service info and more!

[STARCRAFTCAMPING.COM](http://STARCRAFTCAMPING.COM)

**ROADSIDE ASSISTANCE.** Travel worry-free with the complimentary one-year Roadside Assistance program through a third-party provider, which gives you immediate access to dependable roadside assistance with a simple phone call. Check with your local dealer to learn more (available at participating dealers).

## SEE YOUR LOCAL STARCRAFT DEALER:



## UNHEARD OF 2-YEAR WARRANTY.

The Starcraft warranty is a manufacturer's limited warranty. Each Starcraft is warranted to the original purchaser for 24 months from the original date of purchase against defects in materials and workmanship. For a copy of the limited warranty with full terms and conditions, ask your local Starcraft RV dealer.

## eco advantage™

**SAVING THE PLANET.** The Starcraft EcoAdvantage™ is our company's commitment to protecting the environment. Through smart sustainability efforts, we're creating better ways to build better RVs using fewer or renewable natural resources. This is our commitment to you—to build a better RV so that we can do a better job of protecting our planet.

**STARCRAFT®**

THE FUTURE OF CAMPING | pure and simple.

536 Michigan Street  
Topeka, IN 46571 USA

Phone: (800) 945-4787  
Web: [starcraftcamping.com](http://starcraftcamping.com)

FOR INTELLIGENT LIFE  
FOLLOW US ON:



All information contained in this brochure and on the Starcraft RV website is the latest available at the time of publication approval. Starcraft reserves the right to make changes and to discontinue models without notice or obligation. Photography may show optional equipment or props used for decoration purposes only. RVs built for sale in Canada may differ to conform to Canadian codes. Check with your Starcraft dealer for the latest in specifications, standard and optional equipment. 11/14

© 2014 STARCRAFT RV, INC.