

PROVIDENCE®

PROVIDENCE®



2015

CLASS A DIESEL



Providence is all you need for the perfect journey



Providence has exactly what you need for a perfect journey, every time. An ideal combination of power, luxury and sophistication means you'll enjoy your adventures surrounded by the very best of all worlds.

#### Providence Top Features

- 450HP Cummins® ISL 9L Engine
- Aqua-Hot® System Standard
- 2,800-Watt Pure Sine Wave Inverter w/Remote
- 8.0 kW Onan® Quiet Diesel Generator
- 15,000 lb. Hitch Rating
- Sony® LED TVs
- LED Lighting
- High-Gloss 12x24 Porcelain Rectangle Floor Tile
- Hardwood Cabinet Doors/Drawers
- Polished Solid-Surface Countertops
- Double-Roller Shades
- 84" Interior Ceiling Height
- Frameless Flush Mount Windows

PROVIDENCE 42P SHOWN IN LINEN LATTE DÉCOR WITH SPICE WOOD CABINETRY

Go to *FleetwoodRV.com* and build your own Providence!



Cashmere Charm



Linen Latte



Timeless Black

Both inside and out, there is a wide selection of colors, styles and finishes. From the moment you lay your eyes on an Providence, the high-style graphics and décor collection welcome you with gracious beauty and contemporary design. We’ve paid attention to every detail. So wherever you are, you’ll feel right at home.

| CASHMERE CHARM |        |           |            |          |        | CABINETRY |
|----------------|--------|-----------|------------|----------|--------|-----------|
| SOFA           | ACCENT | BEDSPREAD | COUNTERTOP | FLOORING | CARPET |           |
|                |        |           |            |          |        |           |
| LINEN LATTE    |        |           |            |          |        | CABINETRY |
| SOFA           | ACCENT | BEDSPREAD | COUNTERTOP | FLOORING | CARPET |           |
|                |        |           |            |          |        |           |
| TIMELESS BLACK |        |           |            |          |        | CABINETRY |
| SOFA           | ACCENT | BEDSPREAD | COUNTERTOP | FLOORING | CARPET |           |
|                |        |           |            |          |        |           |

INTERIOR THROUGHOUT

- Aqua-Hot® Heating System 50,000 Btu/h (House & Water)
  - 84" Interior Ceiling Height
  - Complete PEX Plumbing System
  - Crown Molding w/Decorative Corner Caps
  - Manual Double Roller Shades
  - Deluxe Roller Bearing, Full-Extension Drawer Guides & Transit-Ship Locks
  - Solid-Surface Entry-Step w/LED Accent Lights
  - Demand Water Pump w/Filter
  - 3 Roof-Mounted, High-Efficiency A/Cs
  - Solid Wood Face Frame Cabinets
  - Hardwood Cabinet Doors/Drawers
- Solid-Surface Countertops & Sink Covers
  - LED Lighting
  - Vinyl Padded Ceiling
  - Wall Switches (Includes Switches for Ceiling Lights & Vents)
  - Whole Coach Water Filtration System
  - Central Vacuum System
  - Stackable Washer & Dryer

- Optional**
- CSA Package (Canadian Specs)\*\*

DRIVER CONVENIENCE

- Adjustable 3-Point Seatbelts at Driver & Front Passenger Seats (w/Adjustable Shoulder Straps)
  - Xite® Touch Screen Dash Radio w/GPS Navigation & Sirius® Satellite Radio (Subscription Required)
  - Automotive Wrap-Around Dash
  - Driver Left-Console w/Lower Storage Bin
  - Color Back-Up Monitor
  - Mirror-Mounted Side Cameras
  - Auxiliary Start Circuit
  - Backlit Switches & Gauges
  - Battery Disconnect System
  - Cruise Control
  - Manual Driver/Passenger Roller Shades/Blinds
  - Front Power Roller Shades/Blinds
  - Driver/Front Passenger Ultraleather™ Captain's Chairs w/Reclining Back/Slide Controls/Power/Heated/Adjustable Arms
  - Denso® High-Output Auto A/C
- Heater Combo
  - Passenger Armrest w/Integrated Magazine Rack
  - Passenger Seat Power Footrest & Adjustable Arm
  - Radio Switch Main/Auxiliary Power
  - Soft-Surface Automotive Dash
  - Smart Wheel w/ Tilt/Telescoping Steering Wheel
  - Power Entry Step Cover
  - 110V Power Outlet at Dash
  - (2) 12V Power Outlets at Dash

GALLEY

- GE 1.7 cu.ft. Convection Stainless Steel Microwave Oven w/Built-in Range Hood & Lights
  - Residential Refrigerator/All Electric
  - 2-Burner, High-Output Electric Flat Panel Induction Cooktop
  - Adjustable Cabinet Shelves (Select Cabinets)
  - Fan-Tastic® Power Roof Vent w/Wall Switch
- Optional**
- Dishwasher

LIVING ROOM

- Sony® 40" LED HDTV Midship (42M)
  - Sony® 48" LED HDTV Midship (42P)
  - Sony® DVD Home Theater Sound System w/Hidden Surround Sound Speakers
  - Polished Porcelain Tile
  - Comfort Fit by Villa® Residential Seat Styling
  - TV Antenna
  - Ultraleather™ Sofa Bed (Select Models)
  - Ultraleather Sofa Sleeper (Select Models)
  - Ultraleather Love Seat (Select Models)
- Optional**

  - Sony® 32" LED HDTV in Front Overhead
  - Sony 60" LED HDTV Mid-Ship (42P)
  - Ultraleather U-Shaped Dinette/Sofa (42M)
  - Ultraleather U-Shaped Dinette/Recliner (42P)
  - Facing Dinette
  - Satellite Radio (Subscription Required)

BEDROOM

- King Dream Easy Memory Foam Mattress
  - Bedspread w/Décor Pillows
  - Cabinet Storage Above the Bed
  - Coffered Ceiling
  - Mirrored Wardrobe Doors
  - Remote Generator Start Switch
  - Rear Wardrobe w/Cedar Lining, Carpeted Floor & Wire Organizer
- Wardrobe Lighting
  - Bedroom Entertainment Center w/Sony® 32" LED HDTV
- Optional**
- King Adjustable Air Mattress

BATHROOM

- Cabinet Toe Kicks
  - Fan-Tastic® Power Roof Vent w/Wall Switch
  - Hardwood Bath Door/Trims
  - Molded Shower Enclosure w/Skylight
- Porcelain Toilet w/Water Saver
  - Solid-Surface Sink
  - LED Light Over Sink
  - Porcelain Vacuum Flush Toilet (42M)

SAFETY/CONVENIENCE (INTERIOR)

- Carbon Monoxide Detector/Alarm
  - Energy Management System (EMS) w/Soft Start
  - Central Electrical Panel
- Fire Extinguisher
  - Multiple Seatbelt Locations
  - Propane Detector/Alarm
  - Smoke Detector/Alarm
  - Neutral Loss Protection

EXTERIOR THROUGHOUT

- 120V/12V AC/DC Converter
  - 2,800-Watt Pure Sine Wave Inverter w/Remote
  - 4-Point Automatic Levelers
  - 50-Amp Service
  - 8.0 kW Onan® Quiet Diesel Generator
  - Awning Rail/Drip Molding (Both Sides)
  - Molded Fiberglass Roof
  - Fiberglass Front Quarter Panels
  - Fiberglass Front/Rear Caps w/High Mounted Taillights
  - Fiberglass Wheel Well Trims
  - Full-Body Paint
  - Remote/Heated Rear-View Mirrors
  - Utility Compartment w/Exterior Shower
  - Water Pump Switch (Multiple Locations)
- Weather Pro Power Awnings (Patio Awning Includes Wind Sensor)
  - Front & Mid-Coach Docking Lights
  - Generator Manual Slide Out
  - Rear Rockguard
  - Frameless Flush Mount Windows

- Optional**
- Exterior Entertainment Center
  - Window Awning Package
  - Satellite Dish Winegard Stationary
  - Satellite Dish Winegard In-Motion
  - Rear Ladder
  - 1st Full Bay 90" Slide Tray
  - 1st Full Bay 36"/54" Slide Trays
  - 2nd Full Bay 90" Slide Tray
  - 2nd Full Bay 36"/54" Slide Trays

AUTOMOTIVE

- Aluminum Wheels
  - Fog Lamps
  - Large One-Piece Bonded-in Windshield
  - Mud Flaps
  - Color Rear & Side-Vision Cameras
  - Windshield Wipers w/Wet Arm
- Tire Valve Extenders
  - Underhood Utility Light
  - Protective Front Mask
  - Remote/Heated Chrome Rear-View Mirrors w/Turn Signals & Sideview Cameras

SAFETY/CONVENIENCE (EXTERIOR)

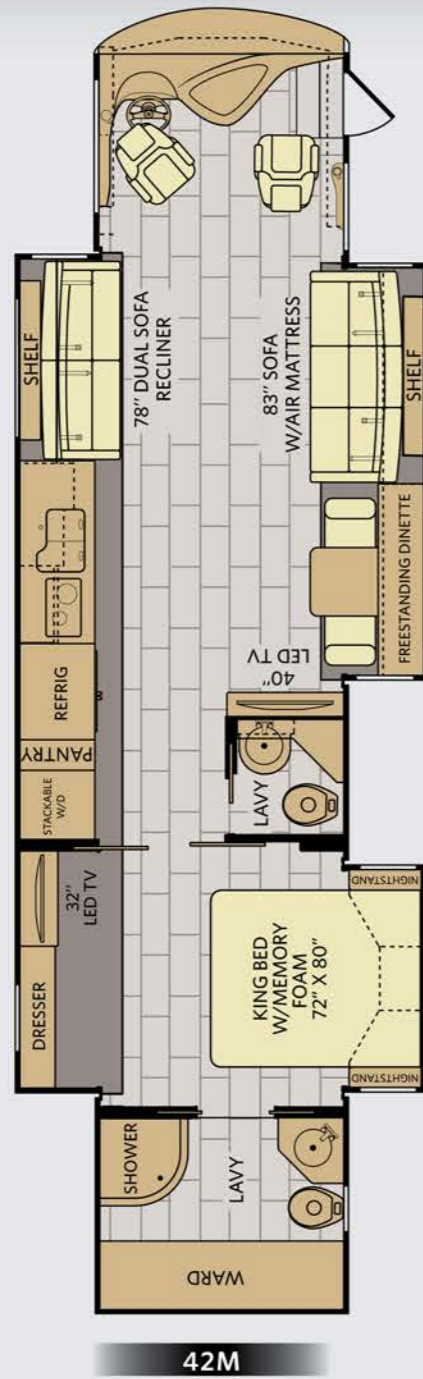
- Automatic Generator Start System
  - ABS Air Brakes
  - 20' Sewer Hose
  - Automotive Safety Glass
  - Daytime Running Lights
  - Doorside Patio Receptacle
  - Easy Sweep Flooring at Entry Step
  - Entry Door w/Screen Door & Deadbolt Lock
  - Four 6V/Deep-Cycle House Batteries
- Keyless Entry Remote
  - Lighted Entry Assist Handle
  - Park Cable Receptacle
  - Porch Light
  - Power Entry Step
  - Rear Side Marker Lights
  - Black Tank San-T-Flush™ System
  - Touch Sensor Tank Monitoring System
  - Utility Compartment w/Exterior Shower

STORAGE

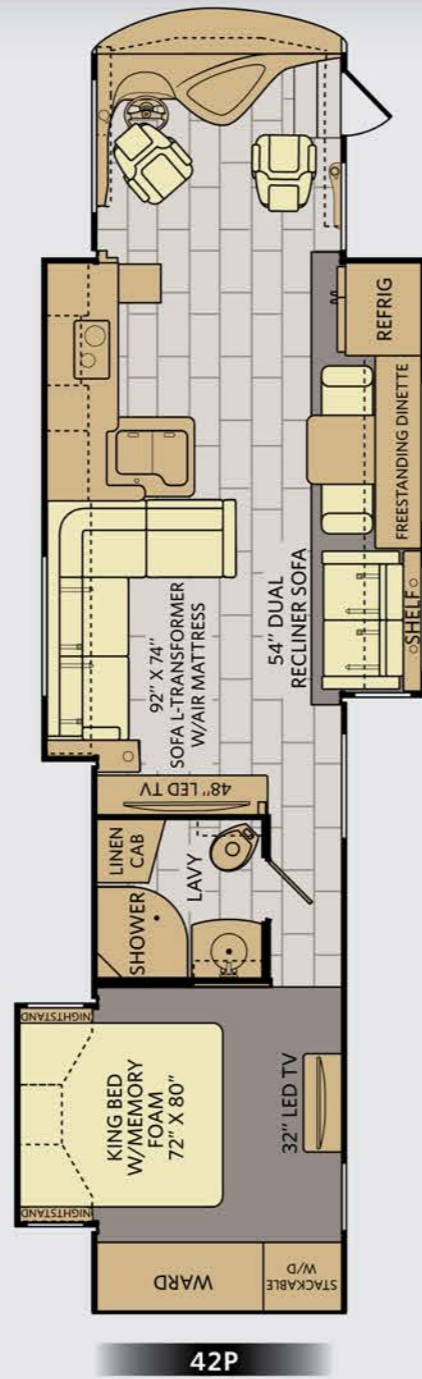
- Continuous One-Piece Compartment Bulb Seal
  - Hidden, Stainless Steel Latch Rods
  - Insulated Aluminum Luggage Doors w/Single Paddle Metal Latches & Stainless Steel Hinges
- Lighted Luggage Compartments
  - Pass-Through Storage
  - Side Swinging Luggage Doors

BODY STRUCTURE

- Ceiling Framing
  - Heated Water & Holding Tank Compartments
- Molded Fiberglass Radius Roof w/Ducted A/C
  - Vacu-Bond® Floors, Walls, Ceiling

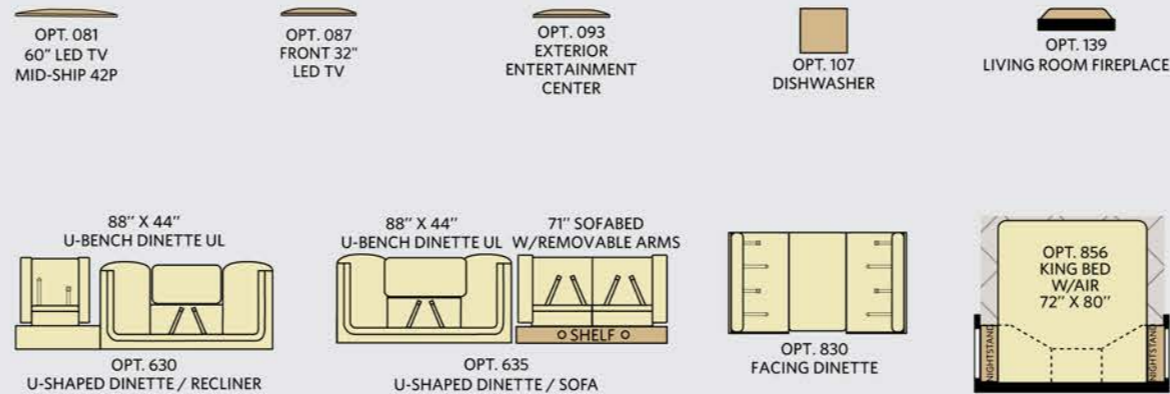


Available options: 087, 107, 635, 830, 856



Available options: 081, 087, 107, 139, 630, 830, 856

FLOOR PLAN OPTIONS



- Addendums
1. GVWR (Gross Vehicle Weight Rating) is the maximum permissible weight of this fully loaded motorhome. The GVWR is equal to or greater than the sum of the (UVW) unloaded vehicle weight plus the (OCCC) occupant cargo-carrying capacity\*.
  2. GAWR (Gross Axle Weight Rating) is the maximum permissible loaded weight a specific axle is designed to carry.
  3. GCWR (Gross Combined Weight Rating) is the value specified by the motorhome manufacturer as the maximum allowable loaded weight of this motorhome with its towed vehicle. Towing and braking capacities may be different. Refer to Fleetwood and chassis manufacturer's manuals for complete information.
  4. Length measured from front bumper to rear bumper (excludes accessories).
  5. Excludes safety equipment and awnings.
  6. Motorhomes feature a body width over 96" which will restrict your access to certain roads. Before purchasing, you should research any state and/or province road laws which may affect your usage.
  7. Tank manufacturer's listed water capacity (WC). Actual propane capacity is 80% of water listing as required by the safety code.
- † The chassis manufacturer recommends the installation of a supplemental brake control system to activate the brakes on the vehicle or trailer you are towing. Hitch receiver ratings expressed are maximum for the hitch receiver installed and may require the purchase of additional equipment that is dependent on the weight of the towed load. Consult with hitch receiver manufacturer for further information.
- \* UVW and OCCC are found on the label containing the federal certification tag in each RV.



| CHASSIS                                | POWER BRIDGE® |        |
|--|---------------|--------|
| MODELS                                 | 42M           | 42P    |
| Wheelbase (inches)                     | 302"          | 302"   |
| GVWR (lbs) <sup>1</sup>                | 44,700        | 44,700 |
| Front GAWR (lbs) <sup>2</sup>          | 14,700        | 14,700 |
| Rear GAWR (lbs) <sup>2</sup>           | 10,000        | 10,000 |
| GCWR (lbs) <sup>3</sup>                | 20,000        | 20,000 |
| Hitch Rating Weight (lbs) <sup>†</sup> | 59,700        | 59,700 |
| Tongue Weight (lbs) <sup>†</sup>       | 15,000        | 15,000 |
| Fuel Capacity (gal)                    | 150           | 150    |

**POWER BRIDGE® CHASSIS**

**Model:** Freightliner® XCM Series  
**Engine:** Cummins® ISL9  
**Transmission:** Allison® 3000 MH 6-Speed w/Electronic Shifter

**Alternator:** Leece Neville 170 Amp  
**Torque:** 1,250 lb-ft @ 1,400 RPM  
**Horsepower:** 450HP

| DIMENSIONS & CAPACITIES                 |         |         |
|---|---------|---------|
| MODELS                                  | 42M     | 42P     |
| Overall Length (inches) <sup>4</sup>    | 43' 6"  | 43' 6"  |
| Overall Height (suspension inflated)    | 12' 10" | 12' 10" |
| Overall Width (maximum) <sup>5, 6</sup> | 102"    | 102"    |
| Interior Height (maximum)               | 84"     | 84"     |
| Interior Width (maximum)                | 96"     | 96"     |
| Interior Storage (cu. ft.)              | 207     | 200     |
| Exterior Storage (cu. ft.)              | 189     | 188     |
| Fresh Water Holding Tank (gal)          | 100     | 100     |
| Grey Water Holding Tank (gal)           | 60      | 60      |
| Black Water Holding Tank (gal)          | 40      | 40      |
| Water Heater Tank (gal)                 | 10      | 10      |

# PROVIDENCE

## WHY FLEETWOOD?



### Quality

There's no cutting corners. Skilled craftsmen build every Fleetwood RV for maximum durability and longevity.



### Trust

More people trust Fleetwood RV. After all, we've spent over 60 years perfecting RVs, earning the loyalty of generations of RVers.



### Passion

We're truly passionate about the RV lifestyle. Fleetwood RV was founded by RV enthusiasts, and that tradition continues today.



### Safety

You've got precious cargo. So we've engineered dozens of innovative safety features into our motor homes to give you more peace of mind.



### Service

Help is nearby with 24/7 emergency roadside assistance through **Coach-Net.\*\*** And when you need an upgrade or repair, you'll find Fleetwood RV dealers all across North America ready to assist you.



### Warranty

Exclusive RV ownercare warranty.  
See your Fleetwood RV dealer for details.

\*\*All 2015 Fleetwood RV motorhomes include a 1-year emergency roadside assistance membership. For complete info, see your Fleetwood RV dealer.

## FLEETWOOD RV



Visit [FleetwoodRV.com](http://FleetwoodRV.com).



### RV OWNERCARE\*\*

Limited one-year/15,000-mile coach warranty and three-year/45,000-mile structural warranty, whichever occurs first, and it is fully transferable for the first 12 months. RV OWNERCARE is one of the RV industry's most comprehensive programs and includes systems, appliances, components and construction, with no deductible and no service charge. RV OWNERCARE coverage is provided by a company that will be around in the future to service your needs. See your nearest Fleetwood RV dealer for a full explanation of benefits and restrictions.

### CONTACT US

To locate a dealer near you, visit our website at [www.fleetwoodrv.com](http://www.fleetwoodrv.com) or call 1-800-322-8216. We can also be contacted at Fleetwood RV Customer Relations, P.O. Box 1007, Decatur, IN 46733.

### FLEETWOOD RV MOTOR HOME CLUBS

As a Fleetwood RV owner, you're invited to become a member of several Fleetwood RV motor home clubs. Becoming a club member is the perfect way to meet other Fleetwood owners who love to travel across America and share in the RV lifestyle. Visit our website at [www.fleetwoodrv.com/owners\\_clubs](http://www.fleetwoodrv.com/owners_clubs) to learn more and join the fun.

**IMPORTANT—PLEASE READ:** Product information, photography and illustrations included in this publication were as accurate as possible at the time of printing. For further product information and changes, please visit our website at [www.fleetwoodrv.com](http://www.fleetwoodrv.com) or contact your local Fleetwood RV dealer. Prices, materials, design and specifications are subject to change without notice. All weights, fuel, liquid capacities and dimensions are approximate. Fleetwood RV has designed its recreational vehicles to provide a variety of uses for customers. Each vehicle features optimal seating, sleeping, storage and fluid capacities. The user is responsible for selecting the proper combination of loads (i.e., occupants, equipment, fluids, cargo, etc.) to ensure that the vehicle's capacities are not exceeded.

**YOUR LOCAL FLEETWOOD RV DEALER IS:**