

# Ellipse

**WINNEBAGO**<sub>RV</sub><sup>TM</sup>



## *Why Ellipse?*

- Unmatched performance of the exclusive Maxum Chassis®
- Flexsteel® luxury cab seats with heat/massage
- New multi-plex wiring system
- Aqua-Hot® zone heating, engine pre-heat, and continuous hot water
- LED lighting
- Stainless steel appliances
- MCD solar/blackout roller shades
- Polished porcelain tile floors
- Exterior entertainment center with HDTV, soundbar, and wireless subwoofer





On the Cover: 42HD Autumn Frost Full-Body Paint

42HD Canyon Trail with Coffee-Glazed Honey Cherry Cabinetry

## The Essence of Refinement

Behold the Ellipse®: A luxurious diesel-pusher built on the Winnebago-exclusive Maxum Chassis® with lowered-rail construction providing unequaled ride, performance, and storage capacity. A proven Cummins® 450-hp turbo-charged diesel engine delivers all the power you need, which you will sense from the Flexsteel® luxury six-way adjustable cab seats that come standard with a power footrest, heat and massage, and power lumbar support. Choose between two magnificent 42' floorplans, including the 42QD featuring a mid-coach galley with pull-out island, French door refrigerator with bottom freezer

drawer, and guest half bath with private master bath. The all-electric coach includes an induction range top. Premium interior amenities including Corian® countertops, porcelain tile flooring, LED lighting, and an electric fireplace will make your amazing journeys comfortable and memorable. Outdoor entertaining is better than ever with the available pull-out Tailgate Package featuring a single-burner induction range top, stainless steel counter, lockable refrigerator/freezer, storage area, and cold water access. The Ellipse is the ideal choice for elegant indoor and outdoor living on the road.



**Recognized Quality** The Recreation Vehicle Dealer Association annually rates RV manufacturers and awards the Quality Circle Award to manufacturers that provide exceptional products, service, and support. Winnebago is proud to be the only manufacturer that has received this award every year since its inception.



## Best in Class

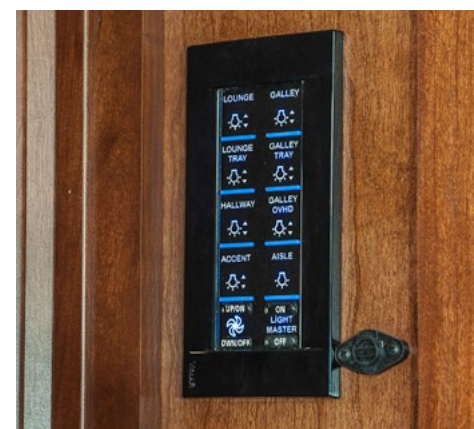
See how Winnebago takes motorhome design and function to the next level, and why we've earned the right to be called the Most Recognized Name in Motorhomes.®



Click on this icon throughout the brochure to link to more information on the web.



Important gauges, switches, and controls are all centrally located in the **OnePlace® Systems Center**.



**Multi-Plex Wall Switches** are located throughout the coach, giving you control of your exterior and interior lights, HWH hydraulic jacks, slideout rooms, exterior service center, and more.



The **Entertainment Center** with a retractable HDTV and electric fireplace provide warmth and entertainment for your friends and family.

The **Rest Easy® Sofa** glides from a sofa to a lounge to a bed at the touch of a button. Select the available ottomans for additional storage and relaxation (42HD).





42HD Canyon Trail with Coffee-Glazed Honey Cherry Cabinetry

Start your relaxation with the Ultraleather™ furniture including a Rest Easy® extendable sectional sofa (42QD) or a Rest Easy sofa (42HD), both with two available ottomans. Bask in the ambient warmth of the fireplace while enjoying your favorite movie on the Blu-ray™ Home Theater System. Feel free to roam about your motorhome with the HDMI 4X4 Matrix Audio/Video Selection System that displays your movie on multiple HDTVs simultaneously so you'll never miss a beat. The ultimate lounging experience awaits in the Ellipse.



Rest Easy Sofa with Ottomans



Glide & Dine Dining Table and Chairs



Corner Cabinet



Refined amenities abound in this high-end galley featuring stainless steel appliances, a two-burner induction range top, French door refrigerator with bottom freezer drawer, microwave/convection oven, and a drawer-style dishwasher. Corian® solid-surface countertops and sink covers provide ample workspace to prepare everything from snacks to gourmet meals. Large, full-extension drawers and the beautiful, glazed cabinets offer abundant storage space as well.



42HD Galley



French Door Refrigerator/Freezer



Dishwasher



Full-Extension Drawer Slides



Microwave/Convection Oven





42HD Bedroom

After a long day on the road, nothing is more welcoming than the sight of a comfortable bed. It's more inviting than ever with the walk-around, powered king bed featuring the Ideal Rest® Natural Reserve digital comfort control mattress. In addition to being fully-adjustable for personalized firmness on each side of the bed, it also comes with a duo-firmness memory-cell insert with natural cotton and bamboo fibers. Enjoy the comforts of twin wardrobes and a large, private master bath featuring the BIG Shower.



42HD Master Bath



42HD Half Bath







Dash

Get behind the wheel, and you'll immediately appreciate a wealth of amenities while experiencing the smooth ride and control of a quality motorhome built on the revolutionary, Winnebago-exclusive Maxum Chassis®. Everything in the cab can be easily adjusted to your preference: the steering wheel, foot pedals, and six-way Flexsteel® luxury seats that feature a power footrest, heat and massage, power lumbar support, and a repositioned seat pedestal for ease in rotating. Enjoy navigational confidence with the standard Infotainment Center with Rand McNally RV GPS and SiriusXM™ satellite radio (subscription not included). With the new, larger Contour™ coach windows you'll appreciate the views and feel one with the road. Powered mirrors with defrost and house mode allow you to mirror what's on the monitor to any TV in the coach. Also enjoy controlling the radio from all TVs in the coach.



Powered Mirrors



Flexsteel Luxury Cab Seats with Footrests



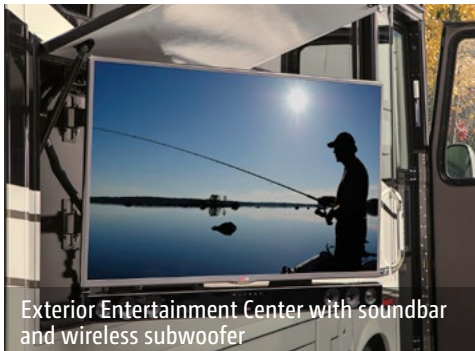
The Ellipse carries its signature elegance on the outside as well, with stylish full-body paint, polished stainless steel accents, and powered acrylic awnings. An exterior entertainment center includes a new, larger HDTV, soundbar, and wireless subwoofer that extends and rotates for easy viewing. Choose the available tailgate package with its single-burner induction range top, stainless steel counter, refrigerator/freezer storage, and cold water access for easy outdoor entertaining. A 90" x 54" slideout storage tray comes standard and allows easy access to gear from both sides of the coach. A powered hose and cord reel, as well as a QuickConnect® sewer hose nozzle, can be found in the service center.



42HD Powered Acrylic Patio Awnings with Motion Sensors



Exterior Storage



Exterior Entertainment Center with soundbar and wireless subwoofer



Entrance Awning with LED Lighting



Electrical Service Center



Available Tailgate Package



## Fiberglass Roof

The crowned, one-piece fiberglass roof is backed by a 10-year limited parts-and-labor roof skin warranty.

## Thermo-Panel® Sidewalls

By layering fiberglass and high-density block foam insulation with welded aluminum support structures, we create some of the industry's strongest, most durable and lightweight sidewalls.

**E-Coating** An electrodeposition coating helps protect critical steel components.

**Embedded Steel** Metal substructures embedded into the sidewall provide solid attachment points to keep cabinets and appliances mounted securely in place.

**Solid Framework** Aluminum extruded in our own facility to our exacting standards creates an extremely strong and solid structural framework.

**Laser-Cut Tubing** Precision laser cutters create precise joints in structural steel that are stronger and require less welding.



**Interlocking Joints** Specially engineered interlocking joints connect the floor, sidewalls and roof where competitors often rely on simple screws to bear the weight.



**Steel Cab Structure** Our innovative all-steel cab SuperStructure adds durability, strength, and safety.

# SUPER STRUCTURE

BUILT TO LAST

Every coach—from our smallest Class C to our largest diesel-pusher model—is built to Winnebago's® legendary SuperStructure® construction standards. It's a process developed and refined over more than 50 years of building some of the strongest, most durable coaches in the industry.



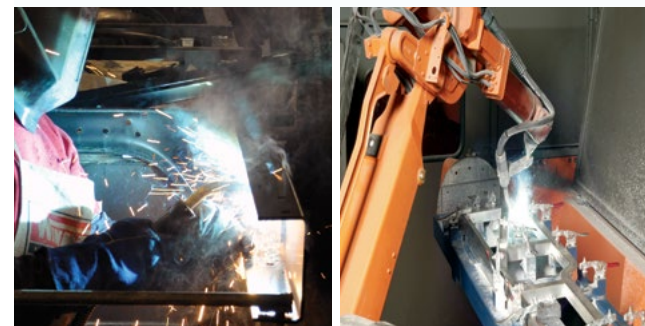
**TESTING** Before rolling out of our factories, every coach undergoes an extensive 113-point inspection. Each coach also passes a high-pressure water test that simulates rain at a rate of 50-inches per hour to check for leaks. During the design process, our computer simulations, physical testing center, and rigorous test track ensure each model is built to last.



**DETAILS** At Winnebago, we treat the features you can't see with the same care as the ones you can. Look in the access panels of some of our competitors' coaches and you'll see loose insulation and wires haphazardly strewn about. Winnebago maintains a clean fit and finish throughout so your coach will last for the long haul.



**BUILT IN-HOUSE** We extrude our own aluminum. We rotocast our own plastic components. In fact, we manufacture most of our own parts so they are designed to fit the space, rather than fitting the space to an awkward off-the-shelf component size.

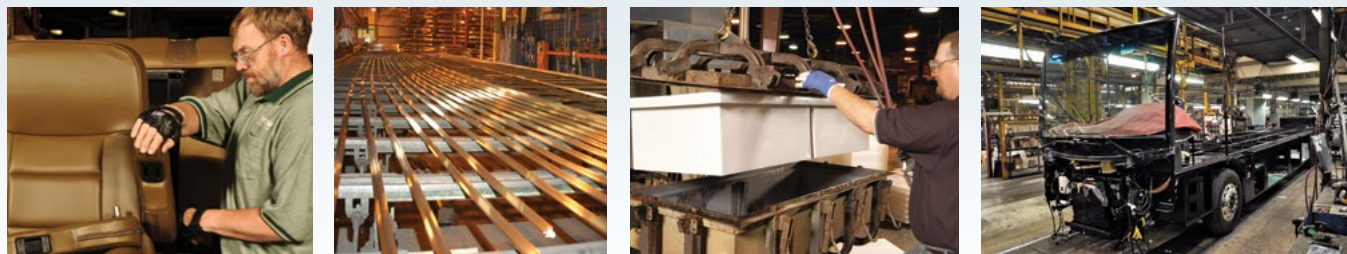


**SUPER  
STRUCTURE**<sup>®</sup>  
BUILT TO LAST

**W** Visit [BetterBuiltRVs.com](http://BetterBuiltRVs.com) to gain real insight into what goes into a Winnebago motorhome.

**TAKE A TOUR** We're proud of our processes, state-of-the-art facilities, and the people who make Winnebago number one. We invite you to visit our complex in Forest City, Iowa, for a firsthand look at the dedication and technology behind every motorhome we build.

Call **641-585-6936** or **1-800-643-4892** or visit us online at [WinnebagoInd.com/company/visit](http://WinnebagoInd.com/company/visit) for more information.





3-point engine mounting reduces engine vibration.

Engine compression brake uses the engine to slow the coach, promoting longer brake life.

15,000-lb. trailer hitch<sup>6</sup>

Allison<sup>®</sup> 3000 MH 6-speed automatic transmission includes a touchpad control for ease of use.

## MAXUM<sup>®</sup> CHASSIS

ZF IFS front suspension and NeWay<sup>®</sup> rear air suspension provide superior ride and handling.

The lowered-rail design moves intrusive rails from storage areas, creating up to 196 cubic feet of storage.

A 60° wheel cut provides a tighter turning radius and better maneuvering.

Rear axle incorporates proprietary gear machining for a smoother, quieter ride.

Taller, pass-through storage height accommodates bulky items.

Extra space in critical areas allows for more pass-through storage.

"Clean Air Diesel" 450-hp ISL Cummins<sup>®</sup> engine delivers hill-climbing power when you need it most.

Low frame rails create a lower center of gravity, improving stability.

Winnebago's SuperStructure integrated with the lowered-rail design creates a chassis that is seven times stronger than typical raised-rail chassis designs.

Dual-fill 150-gal. fuel tank.

Color-coded air lines make service easy.

## A True Work of Art

You may not be able to see the Maxum Chassis as you're driving through the Rockies, but you'll know it's there. Its powerful Cummins turbo-charged diesel engine and Allison<sup>®</sup> transmission go to work so you don't have to sweat the peaks and valleys ahead.

Through a strong partnership with Freightliner, the undisputed leader in diesel motorhome

chassis, we set a new standard for handling, ride and performance in diesel chassis design.

But performance doesn't mean sacrificing storage. The innovative lowered-rail design of the Maxum Chassis opens up a cavernous basement storage compartment, offering up to 196 cubic feet of storage.

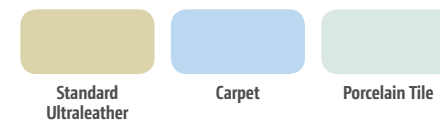
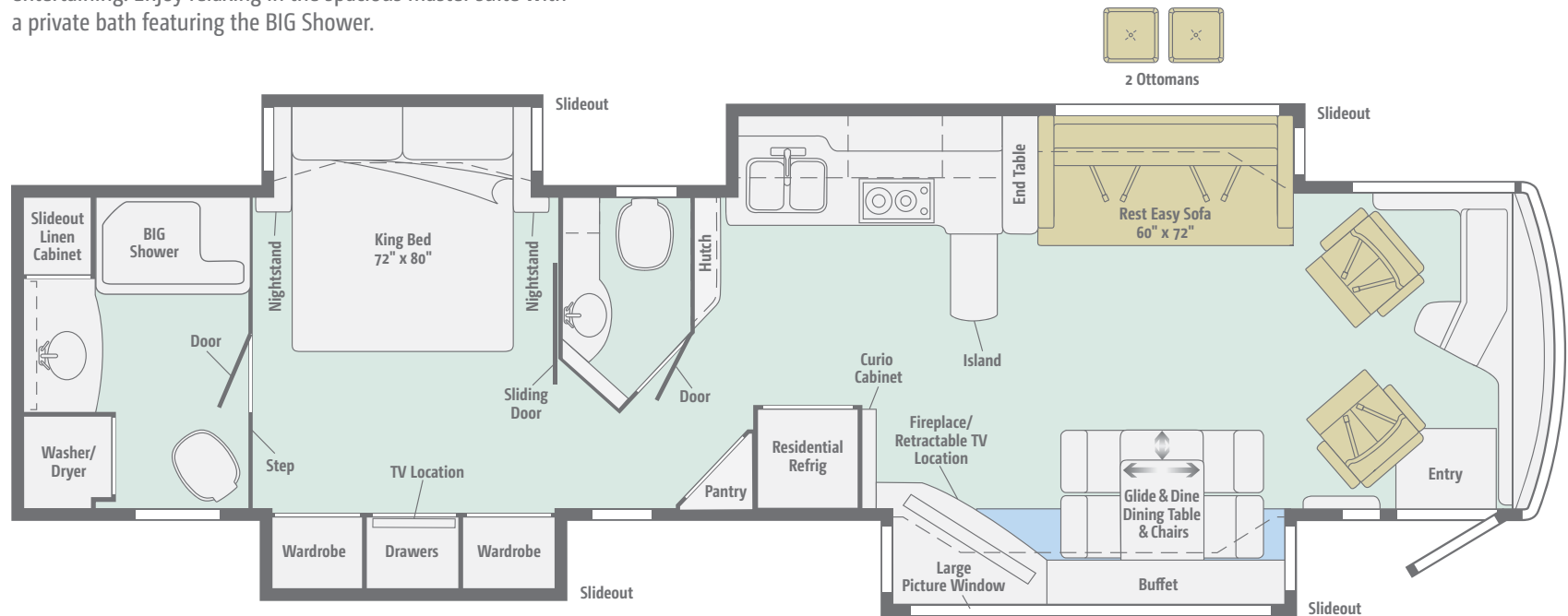
Michelin<sup>®</sup> tires and polished aluminum wheels look sharp.

4-wheel ABS anti-lock air brakes provide fast stopping power.



## NEW 42HD

Four slideouts, a large, 10-foot picture window, a mid-coach galley island, dining table/buffet with Glide & Dine tabletop, and a guest half bath create the perfect space for comfortable entertaining. Enjoy relaxing in the spacious master suite with a private bath featuring the BIG Shower.

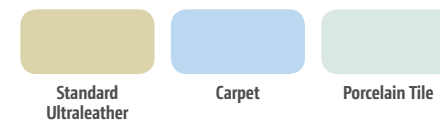
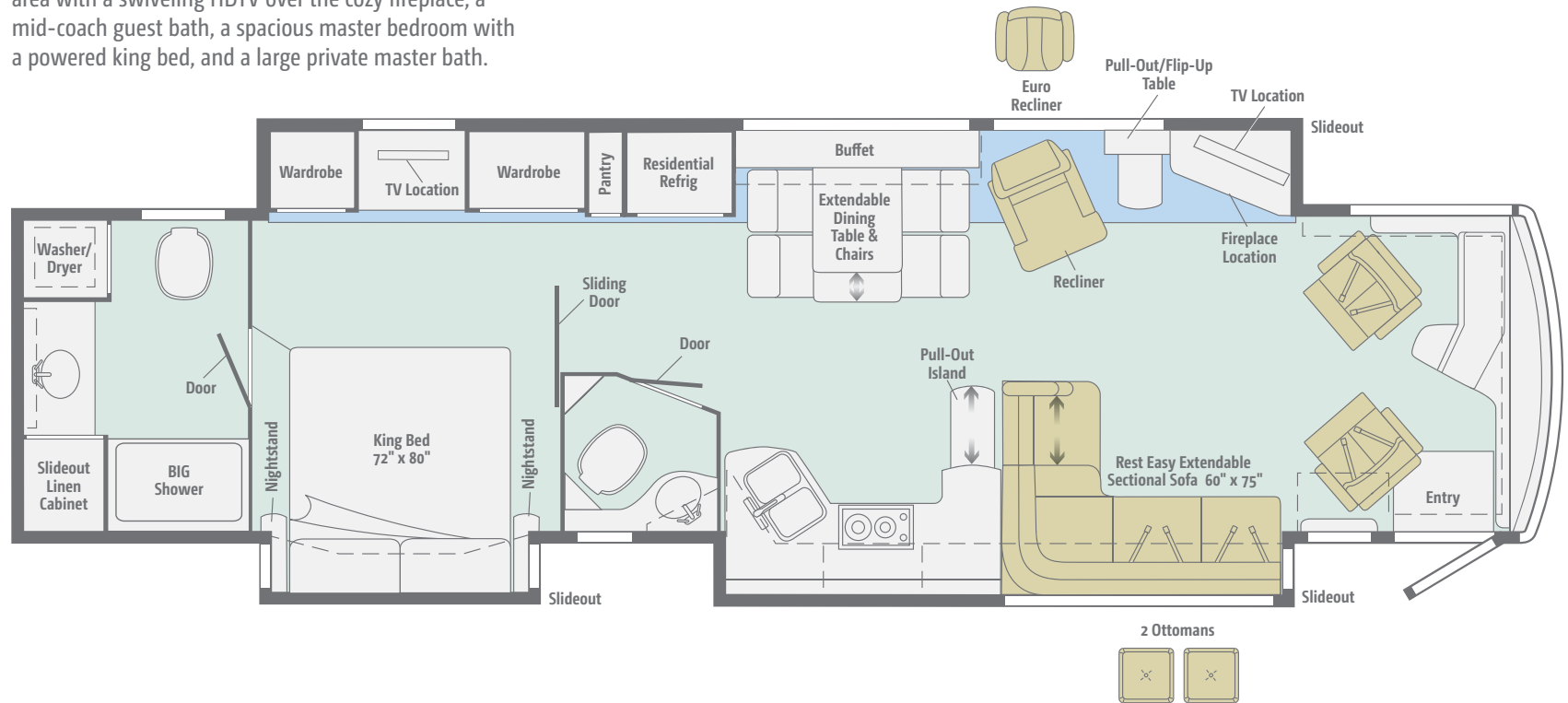


Dimensions shown are for sleeping space only and may vary due to styling differences. Dashed lines denote overhead storage areas. Floorplans and specifications are also available online at [WinnebagoInd.com](http://WinnebagoInd.com).



## 42QD

This full-wall slideout makes for an expansive living area with a swiveling HDTV over the cozy fireplace, a mid-coach guest bath, a spacious master bedroom with a powered king bed, and a large private master bath.



Dimensions shown are for sleeping space only and may vary due to styling differences. Dashed lines denote overhead storage areas. Floorplans and specifications are also available online at [WinnebagoInd.com](http://WinnebagoInd.com).



Choose from three elegant fabric collections and three cabinetry options.

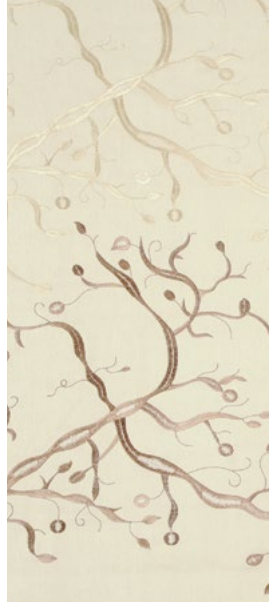
## Marbella



Ultraleather



Accent



Bedsread



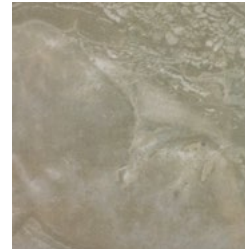
Corian Countertop



Wall Board



Carpet



Porcelain Tile



Coffee-Glazed  
Honey Cherry



Coffee-Glazed  
Vienna Maple



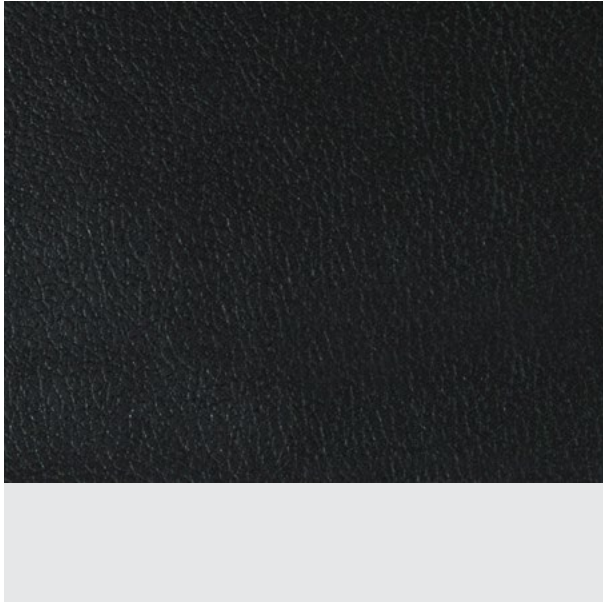
Glazed Java

*Winnebago reserves the right to change décor materials and specifications without notice or obligation.*



Choose from three elegant fabric collections and three cabinetry options.

## Delmar



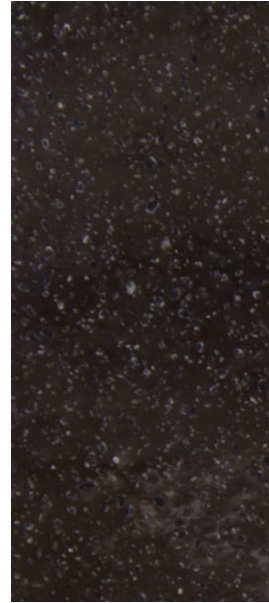
Ultraleather



Accent



Bedspread



Corian Countertop



Wall Board



Carpet



Porcelain Tile



Coffee-Glazed  
Honey Cherry



Coffee-Glazed  
Vienna Maple



Glazed Java

*Winnebago reserves the right to change décor materials and specifications without notice or obligation.*



Choose from three elegant fabric collections and three cabinetry options.

## Canyon Trail



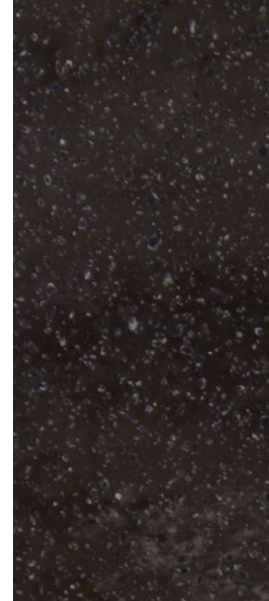
Ultraleather



Accent



Bedspread



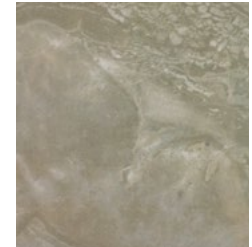
Corian Countertop



Wall Board



Carpet



Porcelain Tile



Coffee-Glazed  
Honey Cherry



Coffee-Glazed  
Vienna Maple



Glazed Java

*Winnebago reserves the right to change décor materials and specifications without notice or obligation.*



The Ellipse has distinguished curb appeal thanks to a premier clearcoat automotive finish that brings a new level of depth and shine to the full-body paint design. A lower front protective mask safeguards the paint for years to come.



**Kalahari**  
FULL-BODY PAINT



**Silver Lining**  
FULL-BODY PAINT



The Ellipse has distinguished curb appeal thanks to a premier clearcoat automotive finish that brings a new level of depth and shine to the full-body paint design. A lower front protective mask safeguards the paint for years to come.



**Midnight**  
FULL-BODY PAINT



**Silver Maple**  
FULL-BODY PAINT



The Ellipse has distinguished curb appeal thanks to a premier clearcoat automotive finish that brings a new level of depth and shine to the full-body paint design. A lower front protective mask safeguards the paint for years to come.



**Sandstone**  
FULL-BODY PAINT



**Autumn Frost**  
FULL-BODY PAINT



## Weights & Measures

	42HD	42QD
Length	43'	43'
Exterior Height <sup>1</sup>	12'10"	12'11"
Exterior Width <sup>2</sup>	8'5.5"	8'5.5"
Exterior Storage <sup>3</sup> (cu. ft.)	196	196
Awning Length	14'6"/18'	14'6"/17'
Interior Height	7'	7'
Interior Width	8'0.5"	8'0.5"
Freshwater Tank Capacity <sup>4</sup> (gal.)	85	85
Water Heater Capacity (gal.)	Continuous	Continuous
Holding Tank Capacity - Black/Gray <sup>4</sup> (gal.)	51/95	51/71
LP Capacity <sup>5</sup> (gal.)	5.6	5.6
Fuel Capacity (gal.)	150	150
GCWR <sup>6</sup> (lbs.)	60,660	60,660
GVWR (lbs.)	45,660	45,660
GAWR - Front (lbs.)	15,660	15,660
GAWR - Rear (lbs.)	30,000	30,000
Wheelbase	279" + tag	279" + tag

## Maxum Chassis®

Cummins® ISL 8.9L 450-hp turbo-charged diesel engine

Adjustable brake and accelerator pedals

Allison® 3000 MH 6-speed electronic transmission w/3-stage (low, medium, high) + off engine compression brake

Information display center

ZF™ Independent Front Air Suspension, NeWay® rear air suspension

160-amp. alternator

Air brakes w/ABS

Quick-connect air accessory

HWH automatic leveling jacks w/3-position controls

Tow power package w/7-pin trailer wiring and I.P. wiring

Trailer Hitch<sup>6</sup> 15,000-lb. drawbar/1,500-lb. maximum vertical tongue weight

Stylized aluminum wheels

## Cab Conveniences

**Flexsteel® luxury cab seats** driver and queen passenger seat w/6-way power, power footrest, heat and massage, remote swivel, power lumbar support, manual recline, adjustable armrests

### 3-point seat belts

**Infotainment Center with Rand McNally RV GPS** 10.4" touch screen color monitor w/split screen function, 2nd monitor, Rand McNally RV GPS safe & easy routing, amenities & tools, trips & content, turn-by-turn voice guidance, AM/FM radio w/CD/DVD player, steering wheel and handheld remote, SiriusXM™ (subscription not included), compass, outside temperature, iPod®/iPhone® audio integration, Bluetooth™, color rearview camera, sideview camera display, and house mode feature

### Video camera system

**Tilt/telescoping SmartWheel™ steering wheel w/infinite adjustable column**

### Cruise control

**Power door locks w/remote keyless entry**

**Powered adjustable mirrors w/defrost, sideview camera and turn signal**

### 12-volt powerpoints

**Powered stepwell cover**

**2-speed built-in defroster fans**

**MCD solar/blackout roller shades** powered for windshield, manual for driver/passenger windows

**Chassis/house battery radio power switch**

## Interior

**Electric fireplace** adjustable thermostat and flame, handheld remote, electronic timer w/automatic shut-off

**50" HDTV** (mid-coach 42QD)

**Blu-ray™ Home Theater** w/soundbar and subwoofer

**Dirt Devil® central vacuum system w/VacPan®**

**Stackable washer/dryer**

**Security Safe**

**HDMI 4X4 Matrix central video selection system**

**Satellite system ready** (front and bedroom)

**OnePlace® systems center**

**Contour™ windows** tinted, dual-glazed, thermo-insulated

**Soft vinyl ceiling**

**Powered ventilator fan** w/rain sensor (galley)

**Powered roof vent(s)** (42QD bathroom)

**MCD solar/blackout roller shades**

**Multi-plex wall switches** w/dimming feature

**LED ceiling lights**

**Accent lighting**

**Digital TV amplified antenna system**

## OPTIONAL EQUIPMENT

**Winegard® Trav'ler® automatic multi-satellite antenna**

**Winegard Mission® in-motion TV antenna system**

## Galley

**Corian® countertops, sink covers, and decorative backsplash**

**Stainless steel microwave/convection oven** w/sensor cook and exterior vented range fan

**2-burner induction range top** w/rapid cooling ceramic glass top

**Stainless steel drawer-style dishwasher**

**Residential stainless steel French door refrigerator** w/freezer drawer, water and ice dispenser

**Cold water filtration system**

## OPTIONAL EQUIPMENT

**Stainless steel microwave/speedcook oven** w/exterior vented range fan

## Bath

**Corian® countertop** w/decorative backsplash

**Flexible showerhead**

**Moen® Posi-Temp® shower valve**

**Textured glass shower door**

**Skylight**

**Porcelain toilets** (macerator)

**Area rug** (master bath)

## Bedroom

29" HDTV (42QD)

32" HDTV (42HD)

Ceiling fan

Powered king bed w/Ideal Rest® Natural Reserve digital comfort control mattress and remote controls

Bedsread, pillows and shams

Headboard

## Exterior

Auxiliary docking lamps

Driver and passenger-side service bay lights

2 powered acrylic patio awnings w/motion sensors w/LED lights, metal wrap

Powered acrylic entrance awning w/LED lights

Acrylic window awnings

KeyOne™ lock system

Exterior entertainment center 42" HDTV and home theater soundbar system w/AC duplex receptacle and wireless subwoofer

90" x 54" slideout storage compartment tray (extends out either side of the coach)

Lighted storage compartments

Storage containers w/lids

7' folding stepladder

Lighted assist handle

Porch and stepwell lights

Automatic entrance steps

Lower front protective mask

Premier clearcoat automotive finish

Rear mud flaps

Full-width rear mudguard

Polished stainless steel on lower valance doors and panels

## OPTIONAL EQUIPMENT

**Pull-Out Tailgate Package** single-burner induction range top, painted steel counter, stainless steel lockable refrigerator/freezer, bottle opener, garbage bag holder, paper towel holder, cold water access port, flexible water spout w/shut off, 15' coil water hose, 110-volt/AC receptacle, large storage area, LED light

**Ladder** (rear cap mounted)

## Heating & Cooling System

**TrueAir® Maximum Comfort A/C** 3-13,500 BTU roof air conditioners w/2 heat pumps and 3 condensation pumps

**Aqua-Hot® 450 hydronic dual-zone heating system w/continuous hot water and engine pre-heat**

**Triple-zone thermostat**

## Electrical System

**Service Center** 120-volt AC power, cable input, QuickPort® service connection hatch, portable satellite dish hookup, solar panel monitor

**Shoreline/generator automatic changeover switch w/Surge Guard®**

**PowerLine® Energy Management System**

**Auxiliary start circuit**

**50-amp. power cord w/power cord reel**

**2,800-watt inverter/charger w/remote panel**

**10,000-watt Cummins Onan® Quiet Diesel™ generator**

**Powered generator slideout mechanism**

**AC/DC electrical distribution system**

**6-12V deep-cycle marine/RV AGM (Absorbed Glass Mat) sealed batteries** (maintenance-free)

**Battery disconnect system** (coach and chassis)

**Automatic dual-battery charge control**

**Chassis battery charger/maintainer**

**Automatic generator start system**

**Shoreline/generator automatic changeover switch w/SurgeGuard**

## OPTIONAL EQUIPMENT

**100-watt solar panel battery charger**

## Plumbing System

**Service Center** multi-plex switch panel, lighted, monitor panel, pressurized city water hookup w/diverter fill, freshwater drain, drainage valves, exterior wash station w/pump switch, glove holder, holding tank flushing system, paper towel holder, 20' sewer hose w/QuickConnect® QuickPort service connection hatch, soap dispenser

**TrueLevel™ holding tank monitoring system**

**Water supply hose w/reel**

**Full coach water filtration system**

**Removable LP tank w/shut-off valve**

**LPG accessory connection** (patio area)

**On-demand water pump**

**Winterization Package**

**Heated holding tank compartment**

## Safety

**LP, smoke, and carbon monoxide detectors**

**10 BC fire extinguisher**

**Ground fault interrupter**

**Daytime running lamps**

**Fog lamps**

**High-mount brake lamps**

## Warranty<sup>7</sup>

**12-month/15,000-mile basic limited warranty<sup>8</sup>**

**36-month/36,000-mile limited warranty on structure<sup>8</sup>**

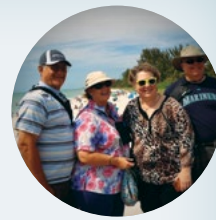
**10-year limited parts-and-labor warranty on roof skin<sup>8</sup>**

### FOOTNOTES

- The height of each model is measured to the top of the tallest standard feature and is based on the curb weight of a typically equipped unit. The actual height of your vehicle may vary by several inches depending on chassis or equipment variations. Please contact your dealer for further information.
- Floorplans feature a wide-body design - over 96." In making your purchase decision, you should be aware that some states restrict access on some or all state roads to 96" in body width. Before making your purchase decision, you should confirm the road usage laws in the states of interest to you.
- The load capacity of your motorhome is designated by weight, not by volume, so you cannot necessarily use all available space when loading your motorhome.
- Capacities are based on measurements prior to tank installation. Slight capacity variations can result due to installation applications.
- Capacities shown are tank manufacturer's listed water capacity (W.C.). Actual filled LP capacity is 80% of listing due to overfilling prevention device on tank.
- Actual towing capacity is dependent on your particular loading and towing circumstances which includes the GVWR, GAWR, and GCWR, as well as adequate trailer brakes. Please refer to the Operator's Manual of your vehicle for further towing information.
- See separate chassis warranty.
- See your dealer for complete warranty information.

Winnebago's continuing program of product improvement makes specifications, equipment, model availability, and prices subject to change without notice. Published content reflects the most current product information at time of printing. Please consult your dealer for individual vehicle features and specifications.





Let us host your next

# Adventure

Over 20 Tours in 2015



WGOAdventures.com



Show your Winnebago love with high-quality gifts and wearables.



Apparel | Gifts | Parts | Gear

WinnebagoOutdoor.com

Find your style



Connect with Winnebago (Click one of the following)



Like us



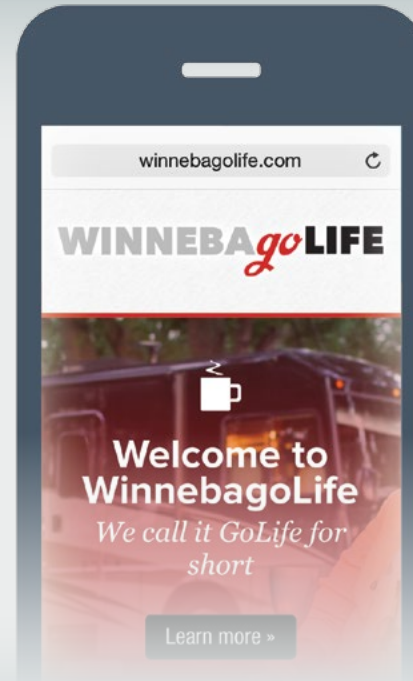
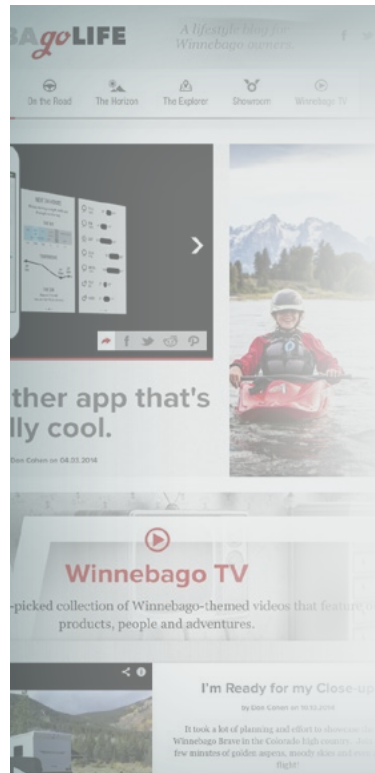
Follow us



Watch now

## WinnebagoInd.com Has All The Answers

Visit WinnebagoInd.com on your computer, smartphone, or tablet for the latest product information and updates.



## Welcome to GoLife!

Visit our lifestyle blog for motorhome news, personal travelogues, and community stories.

WinnebagoLife.com





# WINNEBAGO HAS A STORY AND WHAT A STORY IT IS

## Looking Back



**Take a Drive Down Memory Lane**  
Our favorite history begins in the American heartland of Forest City, Iowa over 60 years ago. Here we have pioneering and building high quality, eye-catching recreation vehicles. Here our story between the wheels.

## Tell us your story

The story of Winnebago is about the people who love our products and take their wild enthusiasm on the road. Now we want to hear from yours. Your stories. Please, do tell. We promise we'll tell everyone! All story submissions will receive a Crew t-shirt. Added bonus: If your story is posted to the website, we'll send you a vintage-style Crew T-shirt. Read more about The Crew below.



WRITE YOUR STORY READ ALL ABOUT IT

## Join the Crew

**Show Your Pride**  
We're looking for a few good men and women on wheels. Start here and we want everybody to join The Crew! If you love Winnebago products and want ahead to show it, you're in! Submit your names and photos to become part of The Crew.



## See How Far We've Come



## Then & Now



**The Crew is Back**  
To the 1960s and The Crew was the beginning of a new era. Winnebago motorhomes with the iconic W and G logo. "Vintage" models in fact, are made in the same Forest City, Iowa as the original ones and today.

SEE TRIBUTE SEE CREW

## Add from the Archives



# VISIT:

MyWinnebagoStory.com

# PREFERRED CARE PROGRAM

We back our motorhomes with best-in-class support both before and after the sale:



- 12-month/15,000-mile basic limited warranty
- 36-month/36,000-mile limited warranty on structure
- 10-year limited parts-and-labor warranty on roof skin
- Complimentary 24-hour roadside assistance program
- TripSaver® Fast Track Parts guarantees that in-stock warranty parts ship directly to your dealer within 24 hours
- National dealer service network



For more information, visit us  
[WGOService.com](http://WGOService.com)



From RV to personal insurance, Winnebago RV Insurance can provide all the coverage and services you need to feel at home on the road.

For more information:  
**(800) 642-4892**



## CONTACT US

### GENERAL INQUIRIES

Corporate Switchboard  
(641) 585-3535

### CURRENT PRODUCT OWNER AND SERVICE-RELATED INQUIRIES

(800) 537-1885  
or@winnebagoind.com

### NEW VEHICLE SALES INQUIRIES

sales@winnebagoind.com

### FAX

(641) 585-6966

### POSTAL ADDRESS

Winnebago, Inc.  
P.O. Box 152  
Forest City, IA 50436

### STREET ADDRESS

Winnebago, Inc.  
605 West Crystal Lake Road  
Forest City, IA 50436

# WIT CLUB

## Join the Club, Join the Fun

Here's the perfect way to begin your life on the road as the owner of a new Winnebago – by joining the exclusive WIT Club. Start your adventure with other fun-loving WIT Club members from across the country and get the most out of your new Winnebago motorhome.



### Members enjoy:

- Caravans and rallies
- Newsletters
- Local and state group activities
- RV travel benefits

See more at  
[WITClub.com](http://WITClub.com)

©2015 Winnebago  
Seat belts are your most important hookup. Always buckle up.



## Grand National Rally

G'day mates! Explore the outback at this year's "Down Under" Grand National Rally. Each year, thousands of Winnebago owners descend upon the land down under – a.k.a. Forest City, Iowa.

Rally-goers enjoy an unforgettable week reconnecting with friends, taking tours, participating in activities, and more. Hop on down and join the adventure this July!

