

Sandpiper



SANDPIPER SELECT FIFTH WHEELS



357TRIP

BRANDY DECOR

The 357TRIP is a great bunkhouse floorplan that includes 3 bunks. It also features a dine in kitchen with abundant countertop space and a large pantry. This bunkhouse comes complete with an exterior kitchen, a perfect feature for any camp chef. To round out the 357TRIP we have included a spacious bath with walk-in shower and glass door and a large master bedroom with standard queen size bed and large wardrobe.



FIFTH WHEELS THAT ARE BOTH STYLISH AND AFFORDABLE.

The Sandpiper Select series is perfect for the camper that's looking to transition into the Fifth Wheel lifestyle. Its compact size and affordable price make it a great alternative for the camper that doesn't require a full size Fifth Wheel. While it may be smaller in stature, the Sandpiper Select is big on Fifth Wheel amenities. Featured on every floorplan is a queen bed, high rise kitchen sink faucet, stonecast undermount sink, real wood slideout fascia, stainless steel microwave and range and abundant storage.



34CK

CREAM DECOR

The Sandpiper Select Series 34CK is an innovative Fifth Wheel layout. The 34CK features a full size closet at the entry, an island kitchen, a full wall slide and angled entertainment center. Rounding out this unit is an upper deck master bedroom with queen bed and large wardrobe and a side aisle bath with a walk-in shower and linen closet.





A TRUE HOME ON THE ROAD.



Hi Rise Faucet. Sandpiper's Hi-Rise faucet is both functional and stylish.



Convenient Features. Our stainless steel digital microwave is a great way to heat up a cup of tea or make a quick snack.



Residential Finishes. All Sandpiper kitchens feature Mocha accent crown molding over the cabinets.



Pendent Lighting. Our pendent lighting fixtures are just one more example of our commitment to true residential design.

EXTERIOR FEATURES



A.



B.



C.



D.



E.



F.



G.



H.



I.



J.



K.



L.

A. 110v outlet and cable outlet conveniently located in the pass-thru storage area.

B. Gel coat fiberglass protects from UV rays and prevents yellowing and cracking.

C. Sandpiper's two tone aerodynamic front cap gives you an improved turning radius.

D. Optional low rise quadruple entry step allows for safe and easy entry into your unit.

E. Heated and enclosed underbelly protects your coach and improved airflow allows for a sturdier ride.

F. Insulated heavy duty Slam Lock baggage doors.

G. Sandpiper's control panel allows you to monitor tanks and other systems quickly and easily.

H. Drip rail with extra long drip spouts help prevent black streaking.

I. Optional hydraulic wide stance power front jacks.

J. The quick connect spray port is great for easy clean up.

K. Contemporary aluminum rims with E-rated radial tires.

L. Optional exterior kitchen with single lever faucet, deep bowl sink, mini refrigerator, abundant storage and bumper mounted swing arm gas grill.

INTERIOR FEATURES



A.



B.



C.



D.



E.



F.



G.



H.



I.



J.



K.



L.

A. Handcrafted fascia gives the slide-out a distinguished look.

B. Serta™ Memory Foam mattress is a Forest River exclusive feature.

C. LED HDTV with premium soundbar and Sony DVD player

D. LED interior lighting. Our LED lights are 40% more efficient than incandescent lights.

E. Contemporary ceiling fan.

F. Real wood drawers on soft close, full extension, ball bearing drawer guides

G. Enjoy the warmth and comfort of the electric fireplace.

H. Mocha accented crown molding gives the Sandpiper kitchen a truly residential finish.

I. Control the temperature with the dual zone Dometic® thermostat.

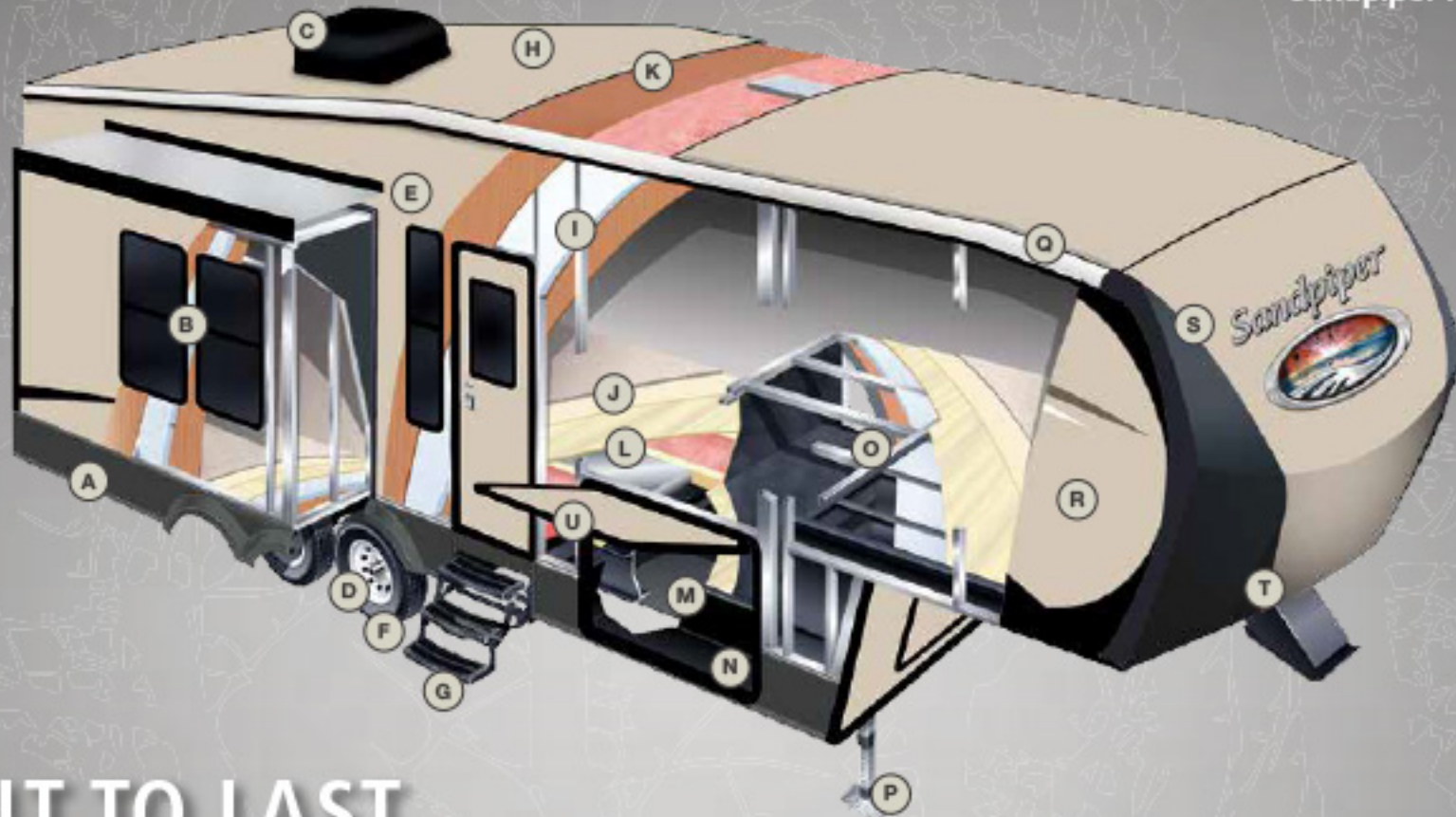
J. Relax in comfort in your rocker recliner. (Standard per floorplan).

K. Theater seating with footrests and console storage. (per floorplan).

L. Porcelain foot flush toilet, easy to use, easy to clean.



Check us out on our Facebook page keyword "Sandpiper RV's"



BUILT TO LAST.

The Sandpiper Select is built to last using only the best materials to ensure that your coach is in it for the long haul. Careful engineering, well appointed craftsmanship and an uncompromising sense of pride go into every fifth wheel that we produce. Rest assured that every Sandpiper is built for luxury living.

- | | | |
|---|---|---|
| <p>A. ROLLED ALUMINUM SIDE SKIRTING</p> <p>B. TINTED SAFETY GLASS WINDOWS (80%)</p> <p>C. DUAL ZONE DUCTED 15K BTU AIR CONDITIONING</p> <p>D. DEXTER AXLES WITH AUTO ADJUST BRAKES</p> <p>E. LAMINATED VACUUM BONDED ALUMINUM SIDEWALLS</p> <p>F. 16" E-RATED RADIAL TIRES (STANDARD)</p> <p>G. HICKORY SPRINGS RADIUS ENTRY STEPS</p> <p>H. COLOR MATCHED SEAMLESS RUBBER ROOF (12 YR. WARRANTY)</p> | <p>I. 2" BLOCK FOAM INSULATION</p> <p>J. DELUXE STAIN RESISTANT CARPET WITH PADDING</p> <p>K. 3/8" ROOF DECKING (FULL WALK-ON ROOF)</p> <p>L. 5/8" TONGUE AND GROOVE PLYWOOD FLOORING</p> <p>M. ENCLOSED, HEATED UNDERBELLY</p> <p>N. I-BEAM POWDER-COATED FRAME W/ RUST INHIBITOR</p> <p>O. ALUMINUM LAMINATED & INSULATED BATH DECK</p> | <p>P. POWER FRONT JACKS WITH QUICK RELEASE SNAP PINS (HYDRAULIC OPTIONAL)</p> <p>Q. SLEEK RADIUS ROOF</p> <p>R. PAINTED COLOR MATCHED HIGH GLOSS GEL-COATED FIBERGLASS EXTERIOR</p> <p>S. TWO TONE GEL-COAT FIBERGLASS FRONT CAP (STANDARD)</p> <p>T. IMPROVED FRONT CAP FOR SHARPER TURNING RADIUS</p> <p>U. INSULATED SLAM LOCK BAGGAGE DOORS</p> |
|---|---|---|

STANDARDS AND OPTIONS

EXTERIOR FEATURES

- Color match high gloss gel coated colored exterior fiberglass
- Painted two tone aerodynamic fiberglass front cap with improved turning radius
- Enclosed and heated dump valves
- Large tinted windows with 80/20 UV prohibitor
- Hickory Springs® radius triple steps with 9" riser (no pinched fingers)
- "One Touch" Dometic® electric awning w/LED light strip
- Power front jacks with spring loaded snap pins
- 16" Radial tires-E Rated
- Automotive-style fender skirts
- Hitch light
- Exterior refrigerator (per floorplan)
- Porch light with interior switch
- 30 lb. double LP tanks with auto change over
- Roof ladder
- 2 exterior speakers
- Rain gutters with extra long drip spouts (prevents black streaking)
- Insulated heavy duty slam lock baggage doors
- Exterior foldable grab handle
- Unobstructed pass-through storage area with cable jacks and 110V outlet
- 2 spray ports with 25' hose (one on each side)
- Upgraded aluminum rims
- 7,000 Lb. axles
- Friction hinge entry door

INTERIOR FEATURES

- 84" interior height with 6'4" slide heights
- Stainless steel appliances
- Beauflor® rustic wood plank linoleum
- Decorative backsplash
- Four color coordinated interiors (Granite, Cream, Pecan, Brandy)
- Soft close full extension drawer glides
- Stone cast under mounted kitchen sink
- Washer/Dryer prep
- Delight Maple handmade cabinetry with screwed lumber core stile construction
- LED lighting throughout
- Residential countertops
- Recessed residential lighting
- Colored shower surround with etched tile pattern
- Upgraded adjustable shower head with shelf

- Accent paneling in slideouts
- Accent lighting over dinette
- Walk-in shower with seat (most models)
- Mocha accent crown molding over kitchen cabinets
- Extra large picture windows throughout
- Vented side windows in slideouts
- TV antenna with booster
- Solid wood drawer fronts with birch sides
- Upgraded raised panel cabinet doors with designer rails
- Bedroom slideout fascia
- Serta® memory foam mattress
- Teddy Bear® bunk mats
- 32" flat screen LED HD TV
- Premium soundbar with Sony® DVD player
- Designer window treatment accented per decor
- 9 cu. ft. stainless refrigerator
- Ceiling fan
- Tri-fold hide-a-bed sofa
- Residential stain resistant carpet
- Center mounted A/C unit for even cooling
- Quilted bedspread
- Trash receptacle in kitchen

APPLIANCES/SYSTEMS

- Dual zone ducted High Performance Dometic® 15K A/C with Quiet Cool (second A/C prep)
- 9 cu. ft. refrigerator
- Dual zone thermostat for living room and bedroom A/C
- Floor ducted 35,000 BTU furnace
- OTR stainless steel microwave
- Three burner high output range with 22" oven
- Interior monitor panel for holding tanks
- Flush floor hydraulic slideouts (per floorplan)
- Dual battery prep
- Satellite and cable hookup with RG-6 cable for high quality picture
- Porcelain foot flush toilets
- 10 Gal. DSI water heater
- 65 Amp converter
- EZ Breeze® power fan in bathrooms

CONSTRUCTION

- Welded aluminum-framed, vacuum bonded laminated superstructure
- Laminated and fully insulated

- bathroom floor deck
- 2" x 3" floor joists 12" on center
- 5/8" tongue & groove plywood floor decking
- 3/8" roof decking (full walk-on roof)
- Cambered powder coated frame with rust prohibitor
- Fully enclosed heated underbelly
- 5" truss roof rafters
- R-10E sidewall construction
- Laminated sidewalls
- Laminated slideout walls

POPULAR OPTIONS

- Hydraulic front jacks
- Roto Flex hitch pin
- Electric rear jacks
- Tri-fold hide-a-bed with hinged bunk overhead (bunk slides)
- Recliners IPO theater seating (where available)
- Solid surface countertops in kitchen
- Free-standing dinette with 4 chairs
- Party Lounge w/footrest and Hide-A-Bed sofa
- Washer and dryer (per floorplan)
- Sofa IPO bottom bunk (per floorplan)
- Second air conditioner-bedroom
- Fantastic fan with rain sensor (bunk room, kitchen, living room, bathroom, half bath)
- 12 Volt heated holding tanks
- Equalflex® equalizer system
- Beauflor® tile look linoleum
- Central vacuum
- R-38E insulation
- Quad entry steps

OPTIONAL POLAR TECH PACKAGE

- Thermal pane windows
- Heated holding tanks
- R-38E roof & all floors insulation
- 40K BTU furnace
- Double fiberglass insulation in roof & floor

FOR YOUR SAFETY

- Smoke alarm
- Fire extinguisher
- Breakaway switch (battery hook-up required)
- Dead-bolt lock on entry door
- LP/CO₂ gas detector
- Fire escape windows

SANDPIPER SELECT SIGNATURE PACKAGE

- Aerodynamic two tone fiberglass painted front cap
- 9 cu. ft. stainless steel refrigerator
- Stainless appliance package
- Serta memory foam mattress
- OTR stainless steel microwave
- Decorative backsplash
- Soft close residential drawers
- Docking station
- High gloss color matched gelcoated fiberglass exterior
- 32" Flat screen LED HD TV
- Premium sound bar with Sony DVD player
- EZ Breeze® power fan in bathroom(s)
- Tri-fold hide-a-bed
- "One Touch" Dometic electric awning with LED light strip*
- LED interior lighting throughout
- Residential stain resistant carpet
- Slam lock baggage doors
- Quiet-cool air conditioner
- Wire and brace for 2nd A/C (ducted)
- Residential pullout kitchen faucet
- 10 Gal. G/E water heater w/DSI
- Aluminum wheels w/7,000 Lbs. axles
- Washer/dryer prep
- Water filter system
- "Rustic wood" look Beauflor flooring

DECOR OPTIONS



GRANITE INTERIOR



CREAM INTERIOR



PECAN INTERIOR



BRANDY INTERIOR



25RLS



329RE



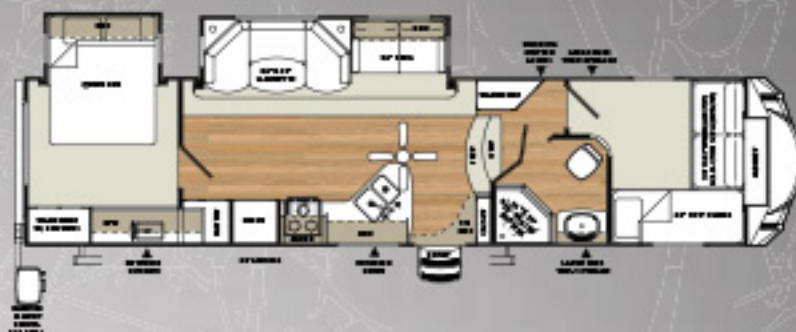
34CK



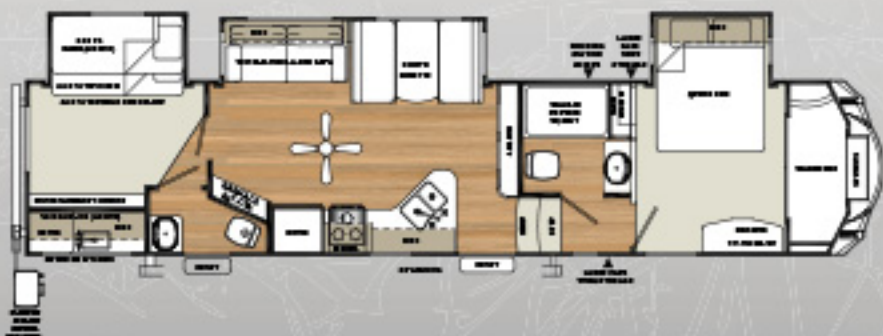
3010K



32QBBS



357TRIP



SPECIFICATIONS

MODEL	25RLS	3010K	32QBBS	329RE	43CK	357TRIP
HITCH	1,472	1,930	1,896	2,218	2,007	1,990
UVW	7,585	10,486	9,059	10,055	10,167	11,248
GVWR	13,472	13,930	13,896	14,218	14,007	13,980
CARGO	5,887	3,444	4,837	4,163	3,840	2,732
LENGTH	29' 0"	37' 11"	36' 11"	36' 3"	39' 11"	40' 3"
HEIGHT	12' 6"	12' 6"	13' 0"	13' 3"	13' 2"	13' 2"
AWNING	18'	16'	20'	16'	16'	20'
BLACK	33	50	44	50	50	100
GRAY	33	77	88	80	100	145
FRESH	43	56	43	56	56	56

See back cover for more information regarding weights.



PRE-DELIVERY INSPECTION FACILITY
20,000 square feet of quality assurance. The bare essentials for a premium product. This state-of-the-art facility gives immediate daily feedback to production for quality assurance in every unit built.



Forest River, Inc. encourages our customers to purchase their Forest River products from a local dealership whenever possible for the following reasons:

It is the goal of Forest River, Inc. that all of our RV owners fully enjoy the RV experience and that customer satisfaction meets or exceeds their expectations!

- 1) Forest River, Inc. dealers are independently owned and operated businesses so priority service and scheduling is at their discretion and is often provided to customers that purchased their unit at that dealership.
- 2) Purchasing locally allows customers to establish meaningful relationships with a dealer, enhancing the RV experience through assistance with product questions, user tips or RV regulations for your state or country, and much more!
- 3) Canadian customers must meet requirements to bring an RV purchased out of the country to their home. These requirements may involve additional inspections and certifications, taxes and fees. Your local Canadian Dealer is a professional at meeting these requirements.
- 4) Scheduling timely warranty repairs and adjustments through a local dealership provides for greater flexibility and convenience to you, the customer!

24/7 EMERGENCY ROADSIDE ASSISTANCE

For a worry-free ownership experience

Forest River includes one year of Coach-Net RV Technical & Roadside Assistance with each RV purchase. Whether new to the RV lifestyle or an experienced RV enthusiast, Forest River owners have 24/7 access to technical, operational and emergency road service coverage throughout the US & Canada.

Coach-Net's fast, dependable service is just a phone call away.

Coach-Net®

RV Technical & Roadside Assistance

FREE MEMBERSHIP
to Forest River Owners' Group

www.forestriverfrog.com



GVWR (Gross Vehicle Weight Rating) - is the maximum permissible weight of the unit when fully loaded. It includes all weights, inclusive of all fluids, cargo, optional equipment and accessories. For safety and product performance do NOT exceed the GVWR.

GAWR (Gross Axle Weight Rating) - is the maximum permissible weight, including cargo, fluids, optional equipment and accessories that can be safely supported by a combination of all axles.

UVW (Unloaded Vehicle Weight)** - is the typical weight of the unit as manufactured at the factory. It includes all weight at the unit's axle(s) and tongue or pin and LP Gas. The UVW does not include cargo, fresh potable water, additional optional equipment or dealer installed accessories.

*Estimated Average based on standard build optional equipment.

CGC (Cargo Carrying Capacity)** - is the amount of weight available for fresh potable water, cargo, additional optional equipment and accessories. CGC is equal to GVWR minus UVW. Available CGC should accommodate fresh potable water (8.3 lbs per gallon). Before filling the fresh water tank, empty the black and gray tanks to provide for more cargo capacity.

** Estimated average based on standard build optional equipment

Each Forest River RV is weighed at the manufacturing facility prior to shipping. A label identifying the unloaded vehicle weight of the actual unit and the cargo carrying capacity is applied to every Forest River RV prior to leaving our facilities.

The load capacity of your unit is designated by weight, not by volume, so you cannot necessarily use all available space when loading your unit.

All information contained in this brochure is believed to be accurate at the time of publication. However, during the model year, it may be necessary to make revisions and Forest River, Inc., reserves the right to make all such changes without notice, including prices, colors, materials, equipment and specifications as well as the addition of new models and the discontinuance of models shown in this brochure. Therefore, please consult with your Forest River dealer and confirm the existence of any materials, design or specifications that are material to your purchase decision.



Learn More
Scan this barcode using a QR Reader on your smart phone to learn more about Forest River.



A Berkshire Hathaway company.

Forest River, Inc.
55470 C.R. 1, Elkhart, IN 46515
(574) 880-4500
www.forestriverinc.com/Sandpiper
www.forestriveraccessories.com

YOUR LOCAL SANDPIPER DEALER