

WE'RE YOUR
LIGHT WEIGHT
SPECIALISTS

Flagstaff

SUPER LITE TRAVEL TRAILERS, & FIFTH WHEELS,
SUPER V, MICRO LITE AND SHAMROCK



Flagstaff

SUPER LITE TRAVEL TRAILERS,
& FIFTH WHEELS, SUPER V,
MICRO LITE AND SHAMROCK





WE'RE BUILDING A LEGACY

FLAGSTAFF TRAVEL TRAILERS, FIFTH WHEELS AND CAMPING TRAILERS CONTINUE TO PROVIDE UNSURPASSED VALUE AND COMFORT. For over 25 years, Flagstaff has been committed to being the market's "light weight" specialist. With a focus on providing travel trailers to meet the weight requirements of the vehicles our customers own, we have built a legacy based on providing superior value and service while remaining in tune with our customer's needs. As a result, Flagstaff has become one of the most versatile product lines in the light weight trailer market, proudly showcasing more innovative floor plans, appealing features and refined interior appointments than any others in its class.



Flagstaff is committed to insuring that our customers enjoy their camping experiences. Through the utilization of our experienced work force, "state of the art" lamination facility and detailed production assembly processes our aim is to continue to provide our customers with the best built product possible at an unmatched value.



MONARCH / MAPLE

27BESS
STANDARD DÉCOR

THE EMERALD PACKAGE. THE LEGACY CONTINUES.

To continue this tradition, Flagstaff Super Lites offer a group of appealing features to enhance the appearance of the Super Lite series. The Emerald package adds style and luxury as demonstrated in the picture of the 26VFKS on page 4 and the 27RLWS on page 6. This option package includes: Oyster colored fiberglass, Deep tinted frameless bonded windows, Slam latches on most storage doors exterior step lighting, aluminum wheels, upgraded slide fascia and solid surface Corian® kitchen counter tops.



EMERALD PACKAGE EXTERIOR

The Super Lite trailer's spacious interiors offer numerous windows, 80" vaulted ceilings with directional vented air conditioning and extensive interior LED lighting throughout. Rich with appointments like the flush mount Stonecast sink, a stove top with glass cover, 22" oven and distinctive Maple or Driftwood cabinets with solid wood doors and drawer fronts throughout add to the tremendous value provided.



Featuring an aluminum framed with vacuum bonded construction, high gloss fiberglass exterior and deluxe graphics, the Super Lite and Super V are among the best constructed, most well insulated trailers available on the market today.



WINSLOW / DRIFTWOOD

27VRL
STANDARD DÉCOR



WINSLOW / MAPLE

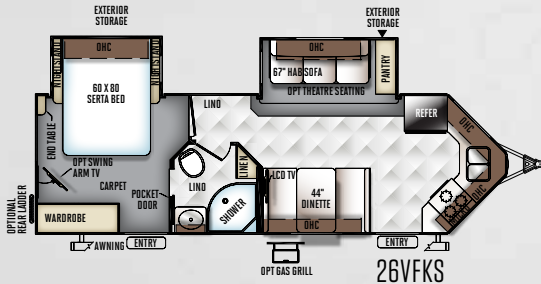
26VFKS
EMERALD PACKAGE

FLAGSTAFF

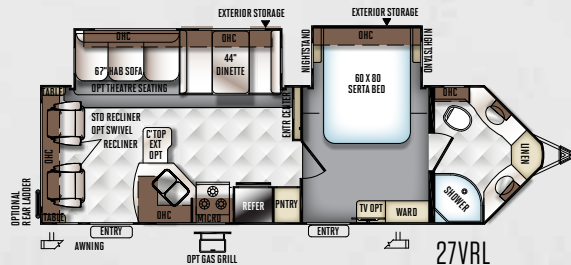
SUPER V

SUPER V

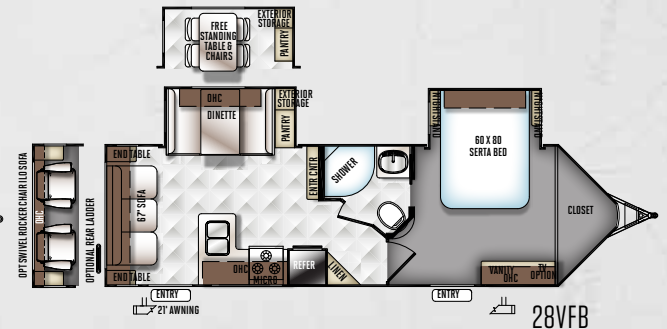
SMALLER IN SIZE, BIG IN COMFORT. The Super V models are a downsized "V" nose designed alternative to the Flagstaff V-Lite. These aerodynamic, six sided vacuum bonded trailers can be towed by a wide range of vehicles while offering "big time" features like bed rooms with walk around residential queen bed slides, fully equipped kitchens and generous storage space.



26VFKS

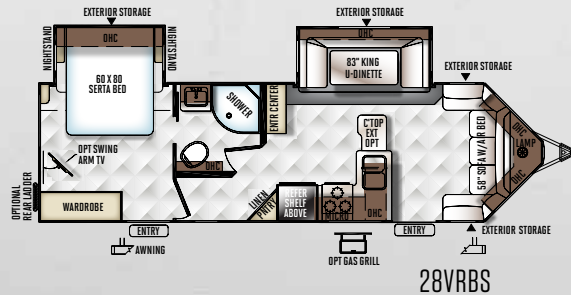


27VRL



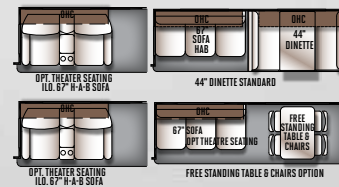
28VFB

MODEL	26VFKS	27VRL	28VFB	28VRBS
UNLOADED VEHICLE WEIGHT *	6259	6689	6447	6463
BASE DRY HITCH WEIGHT	708	840	824	806
BASE DRY AXLE WEIGHT	5492	5790	5564	5598
CARGO CAPACITY	1449	1551	1577	1543
LENGTH (HITCH TO BUMPER)	29' 9"	31' 10"	29' 8"	31' 9"
WIDTH	96"	96"	96"	96"
HEIGHT WITH A/C	132"	131"	132"	132"
INTERIOR HEIGHT	80"	80"	80"	80"
FRESH WATER CAPACITY	43 gal	43 gal	43 gal	43 gal
GRAY WATER CAPACITY	74 gal	74 gal	37 gal	37 gal
BLACK WATER CAPACITY	37 gal	37 gal	37 gal	45 gal

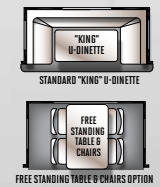


28VRBS

SUPER SLIDE OPTIONS



DINETTE SLIDE OPTION



The Unloaded Vehicle Weight (UJV) listed represents the weight of one trailer with that model's standard equipment including the content of specified Option Packages. * See back cover for further specification definitions.



FLAGSTAFF

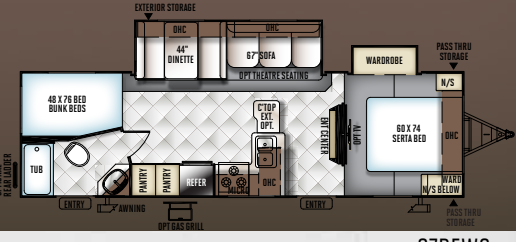
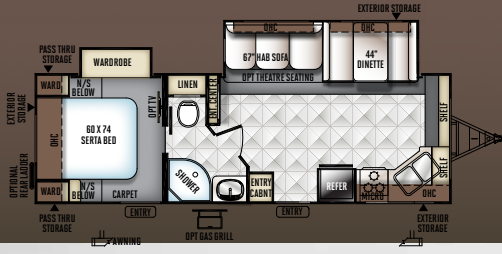
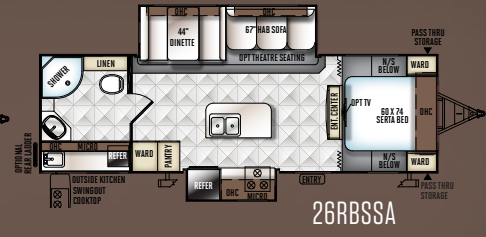
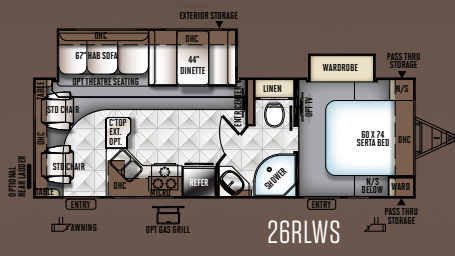
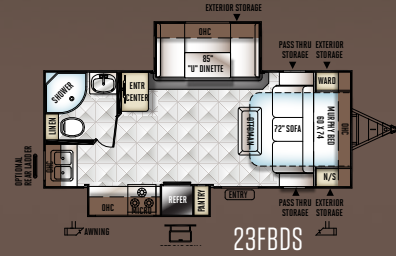
SUPER LITE TRAVEL TRAILERS

THE FLOOR PLAN YOU WANT IN THE SIZE YOU NEED. We have custom designed our trailers with the best in style and amenities while keeping your towing needs in mind. Quality craftsmanship and attention to detail have been put into our Super Lite trailers, all with you in mind. The fully equipped kitchens with comfortable dinettes and distinctive, spacious interiors are just a couple notable features.



WINSLOW / DRIFTWOOD

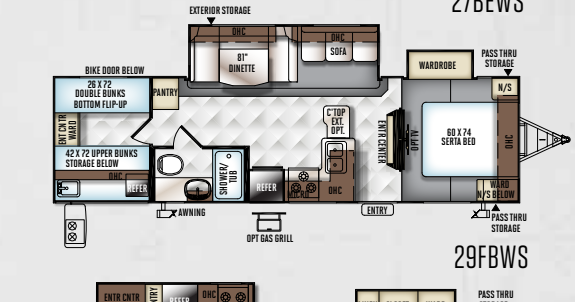
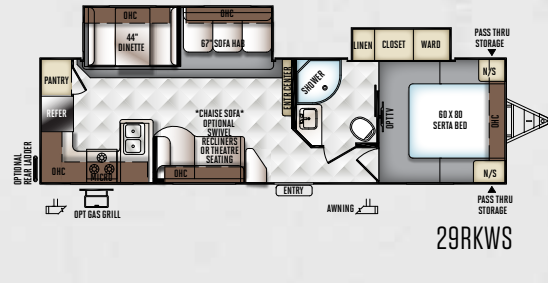
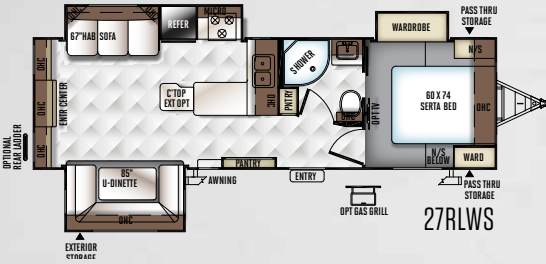
27RLWS
EMERALD PACKAGE



26FKWS

27BESS

27BEWS



27RLWS

29RKWS

29FBWS



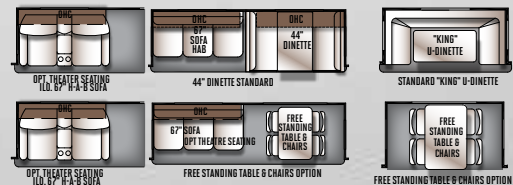
29KSWS

MODEL	23FBDS	26RLWS	26RBSSA	26FKWS	27BESS	27BEWS	27RLWS	29RKWS	29FBWS	29KSWS
UNLOADED VEHICLE WEIGHT*	5195	5875	5909	5876	5645	6309	6618	6690	6596	6965
BASE DRY HITCH WEIGHT	598	662	814	720	648	802	734	674	830	816
BASE DRY AXLE WEIGHT	4538	5154	5036	5097	4938	5448	5825	5863	5801	6090
CARGO CAPACITY	1403	1387	1505	1444	1403	1493	1516	1478	1540	1551
LENGTH (HITCH TO BUMPER)	25' 1"	29' 11"	31' 3"	29' 11"	32' 5"	32' 5"	32' 3"	33' 9"	33' 9"	33' 11"
WIDTH	96"	96"	96"	96"	96"	96"	96"	96"	96"	96"
HEIGHT WITH A/C	132"	132"	132"	132"	131"	132"	132"	131"	131"	132"
INTERIOR HEIGHT	80"	80"	80"	80"	80"	80"	80"	80"	80"	80"
FRESH WATER CAPACITY	43 gal	43 gal	43 gal	43 gal	43 gal	43 gal	43 gal	43 gal	3 gal	43 gal
GRAY WATER CAPACITY	37 gal	37 gal	74 gal	74 gal	37 gal	37 gal	37 gal	74 gal	37 gal	37 gal
BLACK WATER CAPACITY	37 gal	37 gal	37 gal	37 gal	37 gal	37 gal	37 gal	37 gal	37 gal	37 gal

The Unloaded Vehicle Weight (UWV) listed represents the weight of one trailer with that model's standard equipment including the content of specified Option Packages.
 *See back cover for further specification definitions.

SUPER SLIDE OPTIONS

DINETTE SLIDE OPTION





MONARCH / DRIFTWOOD

526RLWS
STANDARD DÉCOR

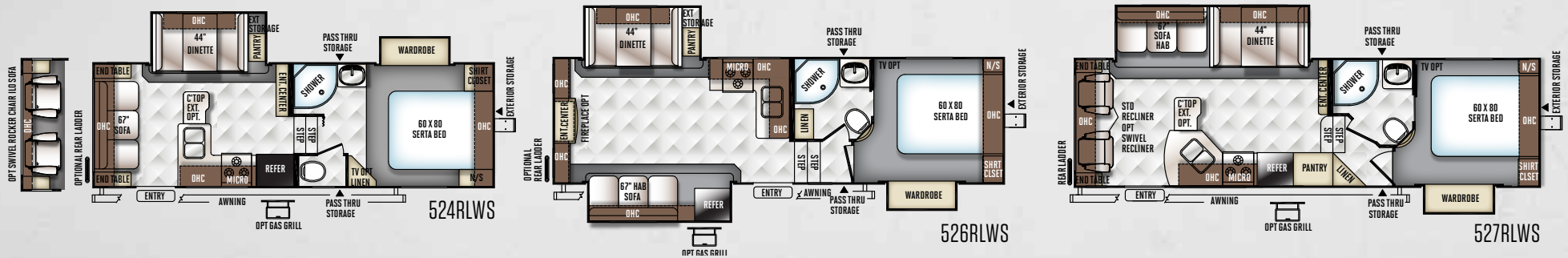
FLAGSTAFF

SUPER LITE FIFTH WHEELS

LIGHTEN YOUR LOAD AND RELAX IN COMFORT. The Flagstaff Super Lite Fifth Wheel models provide light weight alternatives with a variety of floor plans, features and options for owners of 1/2 ton pick up trucks. Equipped with a standard Reese Revolution Hitch, you can tow with almost any size truck bed. Take a close look and you will see that our Super Lite fifth wheels have been custom designed with the best in styling and amenities while keeping your towing needs in mind.



SUPER LITE FIFTH WHEELS

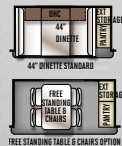


MODEL	524RLWS	526RLWS	527RLWS
UNLOADED VEHICLE WEIGHT*	6397	7303	7400
BASE DRY HITCH WEIGHT	1244	1300	1498
BASE DRY AXLE WEIGHT	5094	5944	5843
CARGO CAPACITY	1447	1497	1498
LENGTH (HITCH TO BUMPER)	27'	29' 8"	30' 1"
WIDTH	96"	96"	96"
HEIGHT WITH A/C	150"	150"	150"
FRESH WATER CAPACITY	43 gal	43 gal	43 gal
GRAY WATER CAPACITY	37 gal	37 gal	74 gal
BLACK WATER CAPACITY	37 gal	37 gal	37 gal

SUPER SLIDE OPTIONS



DINETTE SLIDE OPTION



With the Reese Revolution standard on all Flagstaff Fifth Wheel models, you can tow with almost any size truck bed and have more free space to carry your camping gear.

The Unloaded Vehicle Weight (UJV) listed represents the weight of one trailer with that model's standard equipment including the content of specified Option Packages.
* See back cover for further specification definitions.

FLAGSTAFF

SHAMROCKS

THERE'S MORE TO THE SHAMROCK THAN BLIND LUCK. Whether you are interested in the expanded interior space provided by the spacious drop down bunks with heated innerspring mattresses or the ability to bring an ATV along, the Flagstaff Shamrock will deliver with the quality and amenities you expect. Flagstaff has redefined camping by allowing you to have the necessities of residential living at the campsite.



MONARCH / MAPLE

23IKSS



MODEL	17	183	19	21B0	21DK	21SS	21SSL	23IKSS	23WS	233S
UNLOADED VEHICLE WEIGHT *	3149	3862	3654	4744	4015	4668	5514	5349	4841	4786
BASE DRY HITCH WEIGHT	346	392	394	698	586	504	398	658	500	660
BASE DRY AXLE WEIGHT	2765	3432	3222	4008	3391	4126	5078	4653	4303	4088
CARGO CAPACITY	1197	930	1140	1454	971	1436	1584	1309	1459	1474
LENGTH (HITCH TO BUMPER)	18' 9"	21' 3"	21' 3"	23' 11"	21' 9"	22' 10"	32' 2"	25' 3"	25' 2"	25' 3"
TRAILER LENGTH (OPEN)	23' 1"	25' 7"	25' 7"	27' 10"	26' 1"	27' 2"	36' 4"	29' 7"	29' 6"	29' 7"
WIDTH	96"	96"	96"	96"	96"	96"	96"	96"	96"	96"
HEIGHT WITH A/C	122"	123"	123"	129"	124"	129"	131"	132"	132"	129"
INTERIOR HEIGHT	80"	80"	80"	80"	80"	80"	80"	80"	80"	80"
FRESH WATER CAPACITY	43 gal	43 gal	43 gal	43 gal	43 gal	43 gal	43 gal	43 gal	43 gal	43 gal
GRAY WATER CAPACITY	30 gal	30 gal	30 gal	30 gal	30 gal	30 gal	30 gal	30 gal	30 gal	30 gal
BLACK WATER CAPACITY	30 gal	30 gal	30 gal	30 gal	30 gal	30 gal	30 gal	30 gal	30 gal	30 gal

The Unloaded Vehicle Weight (UJV) listed represents the weight of one trailer with that model's standard equipment including the content of specified Option Packages.
 * See back cover for further specification definitions.

FREE STANDING TABLE & CHAIRS OPTION



OPT FOR 21B0, 21SS, 21SSL, 23IKSS & 233S.



Sapphire Package Exteriors



FLAGSTAFF

MICRO LITES

ALL YOU NEED IN A PERFECT, COMPACT PACKAGE. Micro Lite trailers are excellent for those who want to move from the tent camper to the Light weight towable. The light, small compact design was created for families driving vans and small sport utility vehicles. With residential amenities and excellent features, you're sure to enjoy the Micro Lites.



CASHMERE / DRIFTWOOD

19FBS



MONARCH / DRIFTWOOD

25BHS



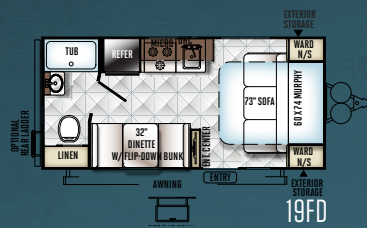
THE BEST MICRO LITE TRAILER ON THE MARKET. When towing size and weight are your focus. You will find that these specially designed Micro Lite models offer flexible floor plans that provide you with more comfort and amenities that you would expect all within the towing capacity of many of the smaller vehicles on the road today.



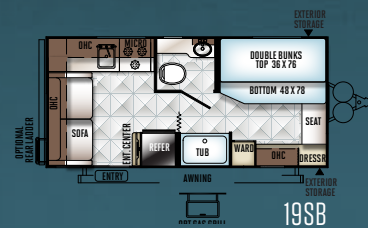
25BHS w/ Sapphire Package



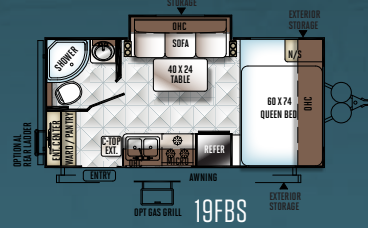
19FBS w/ Standard Exterior



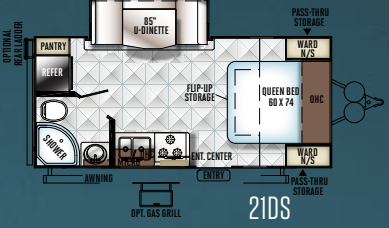
19FD



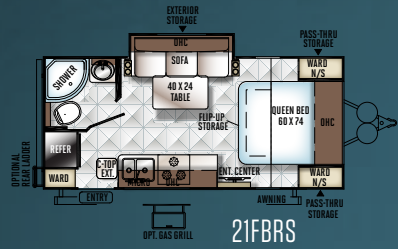
19SB



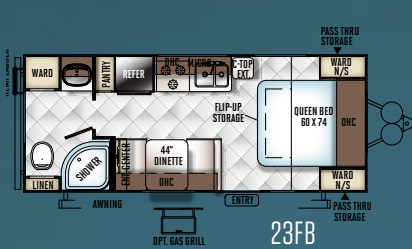
19FBS



21DS



21FBR



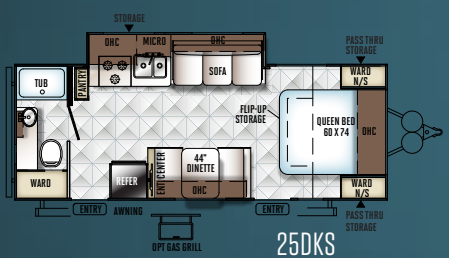
23FB



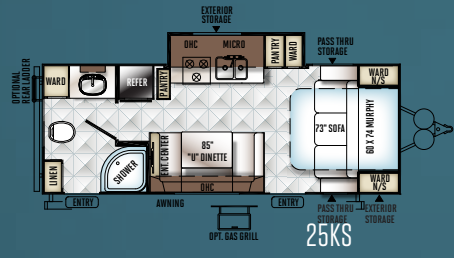
23FBKS



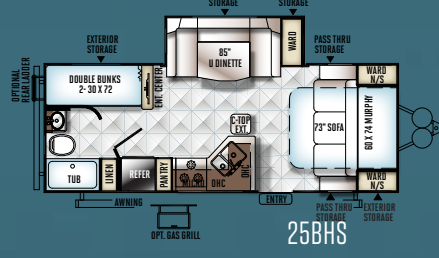
23LB



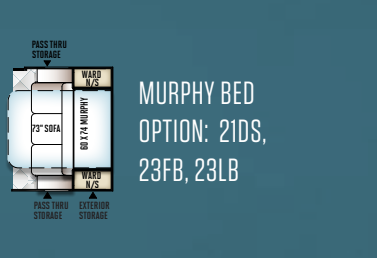
25DKS



25KS



25BHS



MURPHY BED
OPTION: 21DS,
23FB, 23LB

MODEL	19FD	19SB	19FBS	21DS	21FBR	23FB	23FBKS	23LB	25DKS	25KS	25BHS	25BKS	25FKS
UNLOADED VEHICLE WEIGHT*	3127	3091	3451	4150	4037	3964	4189	3890	4400	4514	4876	4463	4791
BASE DRY HITCH WEIGHT	397	386	462	536	456	585	576	516	527	625	512	529	560
BASE DRY AXLE WEIGHT	2692	2705	2989	3555	3522	3320	3554	3315	3814	3830	4305	3875	4172
CARGO CAPACITY	770	757	473	1386	1219	1421	1387	1426	1327	1311	1436	1266	1469
LENGTH (HITCH TO BUMPER)	20' 4"	20' 4"	20' 4"	21' 7"	21' 7"	23' 7"	23' 7"	23' 7"	25' 7"	25' 7"	25' 9"	25' 7"	25' 9"
WIDTH	96"	96"	96"	96"	96"	96"	96"	96"	96"	96"	96"	96"	96"
HEIGHT WITH A/C	123"	123"	122"	130"	123"	123"	123"	123"	122"	123"	128"	124"	128"
INTERIOR HEIGHT	80"	80"	80"	80"	80"	80"	80"	80"	80"	80"	80"	80"	80"
FRESH WATER CAPACITY	43 gal	43 gal	43 gal	43 gal	43 gal	43 gal	43 gal	43 gal	43 gal	43 gal	43 gal	43 gal	43 gal
GRAY WATER CAPACITY	30 gal	30 gal	30 gal	30 gal	30 gal	30 gal	30 gal	30 gal	30 gal	30 gal	30 gal	30 gal	30 gal
BLACK WATER CAPACITY	30 gal	30 gal	30 gal	30 gal	30 gal	30 gal	30 gal	30 gal	30 gal	30 gal	30 gal	30 gal	30 gal

The Unloaded Vehicle Weight (UVW) listed represents the weight of one trailer with that model's standard equipment including the content of specified Option Packages.
*See back cover for further specification definitions.



25BHS

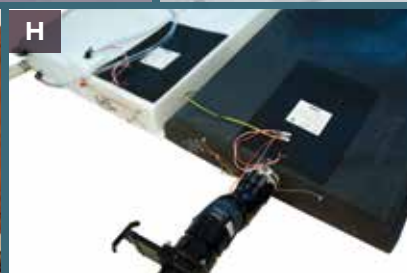
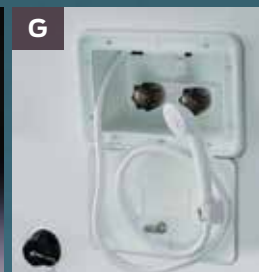


25FKS

FLAGSTAFF

POPULAR
FEATURES

JUST A FEW FEATURES THAT MAKE US GREAT.



A Power Awning with Adjustable Rain Dump and LED Lighting
(UL/UV: Std/Opt, ML and R: Opt.)

B Solar Panel Prep (Std. All Models) The Zamp 40 amp, portable solar panel shown is sold separately.)

C 32" LCD w/ 5.1 Dolby Speaker System with "Bluetooth" Technology.
(Opt. UL/UV: Select Models)

D Rear Camera Prep. (Std. All Models) The Furrion observation camera system with digital wireless technology is sold separately.

E Under mount Stonecast Kitchen Sinks (Std. in Most Models)

F Water Filtration System (Std. Opt.)

G Outside Shower (Std.)

H Heated holding tanks with 12 volt heat pads secured to the bottom (Opt.)

I Radius Glass Door Shower (N/A Models w/ Tub bases)

J Swivel Rocker Chair Fabric Matched to Sofa Shown w/ Cashmere Decor
(Std. 26RLWS Only) (Opt. 524RLWS Only)

K Push Back Recliner Fabric Matched to Sofa Shown w/ Cashmere Decor
(Std. 27VRL, 27BEWS) (N/A 26RLWS)

L Theatre seating fabric matched to sofa shown w/ Cashmere decor
(Std. 29KSWs)(Opt. 1LO Sofa 26VFKS, 27VRL, 26RLWS, 26RBSSA, 26FKWS, 27BEWS, 29FBWS, 526RLWS, 527RLWS)

M Deluxe Tri-Fold Sleeper Sofa w/ Comfortable Easy Set up Queen Bed (Std. 26VFKS, 27VRL, 28VRS, 26RLWS, 26RBSSA, 26FKWS, 27BEWS, 27RLWS, 29RKWS, 29FBWS, 29KSWs, 526RLWS, 527RLWS)(Opt. 21SS/21SSL, 23IKSS)

FLAGSTAFF

QUALITY CONSTRUCTION

JUST A FEW FEATURES THAT MAKE US GREAT.

Quality built trailers always bring the same results: long-lasting products you can depend on to enjoy with your family year after year. These are some of our highlights.



- 1 Glued and screwed wood cabinetry
- 2 Aluminum dinette frames for added strength and weight savings
- 3 Vacuum-bonded floor with 16" on center aluminum floor joists (Std. Super Lite, select Shamrock models)
- 4 Extra large dinette storage doors and full extension metal drawer guides in the kitchen
- 5 Dexter Torflex Axles:
 - Independent wheel suspension and self-damping action
 - Rubber cushioning eliminates metal-to-metal contact.
 - Forged torsion arm for maximum strengthModels are also equipped with E-Z Lube® System and Nev-R-Adjust® Brakes.
- 6 Enclosed underbelly protects trailer components as well as increasing aerodynamics (Super Lite models only)
- 7 Aluminum Frame Construction with fiberglass exterior shown with Emerald Package and deluxe graphics

ROOF CONSTRUCTION



Vacuum-bonded radius roof with vaulted ceiling providing superior insulation and more interior height.



4" thick roof with built in insulated A/C ducts



Built strong to enable you to conveniently perform periodic roof maintenance.

WALL STRENGTH



Structurally engineered materials makes our vacuum-bonded walls some of the strongest in the industry.

VACUUM-BONDED LAMINATED CONSTRUCTION



Flagstaff is one of the few manufacturers that is a fully **6 sided vacuum-bonded trailer**. Our walls, floors, roof, fronts and backs are all aluminum framed and vacuum-bonded to ensure a light weight strong structural trailer.

STANDARDS & OPTIONS

STANDARDS & OPTIONS ARE SUBJECT TO CHANGE.

MODELS	SV	STT	SFW	S	ML	MODELS	SV	STT	SFW	S	ML	MODELS	SV	STT	SFW	S	ML
INTERIOR FEATURES						Designer Valances w/ Lambrequin Arms	S	S	S	--	--	Microwave Oven	SO	SO	SO	SO	SO
Driftwood Interior	S	S	S	S	S	Mini Blinds	S	S	S	--	--	Solid Surface Corian Counter Tops in Kitchen	EP	EP	EP	--	--
Maple(w/ Solid Maple Glaze Finished Cabinet Doors) Interior	O	O	O	O	O	Night Shades	--	--	--	O	O	Under Mount Double Bowl Stonecast Kitchen Sink w/ Residential Style Faucet (N/A 19FD, 19SB)	S	S	S	S	S*
Upgraded Decorative Slide Out Fascia	EP	EP	EP	--	--	Day/Night Shades	O	O	O	--	--	Residential One-Piece Sink Cover	S	S	S	S	S
Solid Wood and Raised Panel Doors and Drawers	S	S	S	S	S	Push Back Recliner Fabric Matched to Sofa (Std. 27VFRL, 527RLWS)	S*	--	S*	--	--	Cutting Board	S	S	S	S	S
Screwed and Glued Wood Cabinetry	S	S	S	S	S	Swivel Rocker Chair (26RLWS Only, Opt. 28VFB, 524RLWS ILO Rear Sofa)	O*	S*	O*	--	--	Kitchen Cabinet Mounted Fold Down Shelf (23FB, 23LB Only)	--	--	--	--	S*
Residential Full Extension Metal Drawer Guides	S	S	S	S	S	Swivel Rocker Recliners ILO Push Back Chairs (Opt. 27VFRL, 527RLWS Only)	O*	--	O*	--	--	Counter Top Extension (Std. 29KSWWS) (Available 27VFRL, 28VRBS, 26RLWS, 27BEWS, 27RLWS, 29FBWS, 524RLWS, 527RLWS, 25BHDS)	O*	O*	O*	--	O*
Flooring: Carpet and an Engineered Mold and Mildew Resistant Floor Covering (21SS, 21SSL, 23IKSS, 233S)						Swivel Rocker Recliners ILO Chaise Lounge (Opt. 29RKWS Only)	--	O*	--	--	--	Water-Pur Filtration System	SO	SO	SO	SO	SO
Engineered Mold and Mildew Resistant Floor Covering	S	S	S	S*	S	Theater Seating (Std. 29KSWWS, Opt. 26VFKS, 27VFRL, 26RLWS, 26RBSSA, 26FKWS, 27BEWS, 29FBSS, 526RLWS, 527RLWS)	O*	S*/O*	O*	--	--	Tube Surround	S	S	S	S	S
Minimum Carpet	O	O	O	--	--	Theater Seating ILO Chaise Lounge (Opt. 29RKWS Only)	--	O*	--	--	--	Radius Glass Door Shower	S*	S*	S*	S*	S*
Ducted Furnace	--	--	--	S	S	Deluxe Tri-Fold Sleeper Sofa (Std. 26VFKS, 27VFRL, 27VRBS, 26RLWS, 26RBSSA, 26FKWS, 27BEWS, 27RLWS, 29RKWS, 29FBWS, 29KSWWS, 526RLWS, 527RLWS) (Opt. 21SS/21SSL, 23IKSS)	S*	S*	S*	O*	--	Bathroom Skylight	S	S	S	S	S
Floor Ducted Furnace	S	S	S	--	--	Aluminum Bed and Dinette Frames	S	S	S	S	S	110 DSI Gas/Electric Six Gallon "Quick Recovery"					
13,500 BTU Ducted Air (N/A 19FBS, 19FD, 19SB, 17, 183, 19)	SO	SO	SO	SO*	SO*	44" Family Dinette (N/A 21DS, 25BHDS, 25FKS, 23FBDS, 27BESS, 27RLWS, 27VRBS, 29FBWS, 21DK, 233S)	S*	S*	S*	S*	O*/S*	Water Heater w/ Interior Gas and Electric Switches	SO	SO	SO	SO	SO
15,000 BTU A/C	O	O	O	O	O	48" X 84" Spacious King-U-Style Dinette (Std. 21DS, 25BHDS, 25FKS, 23FBDS, 27BESS, 27RLWS, 27VRBS, 29FBWS, 21BD, 21DK, 233S)	S*	S*	S*	S*	S*	Water Heater By-Pass Kit	S	S	S	S	S
2nd Roof A/C w/ Chill Chaser Heat Strip in Bedroom and 50 Amp Service (Opt. 27RLWS, 29RKWS, 29FBWS, 29KSWWS, 524RLWS, 526RLWS, 527RLWS)	O*	O*	O	--	--	Free Standing High Pressure Laminated Table with Swing Level Legs (Swing Level Legs N/A 19FBS, 19FD, 19SB, 21FBRS, 23FB, 23FBKS, 23LB, 25DKS, 25BHKS, 25O6S)	S	S	S	S	S*	Foot Flush Toilets	S	S	S	S	S
13,500 Roof A/C (Std. 17, 183, 19)(Opt. 19FBS, 19FD, 19SB)	--	--	--	SO*	SO*	Free Standing Table and Chairs (N/A 26VFKS, 27BESS, 17, 183, 19, 21DK, 23WS, All Micro Lite Models)	O*	O*	O*	O*	--	Maxxair® Ventilation Fan and Vent Cover	SO	SO	SO	SO	SO
Fireplace (27RLWS, 29KSWWS, 526RLWS Only)	--	O	O	--	--	Stainless Steel Appliances	O	O	O	O	O	Extra Maxxair® Ventilation Fan and Vent Cover	O	O	O	S	O
Carbon Monoxide Detector	SO	SO	SO	SO	SO	Raised Refrigerator Panels	O	O	O	O	O	Murphy Bed w/ Under Sofa Storage System and Outside Access for Unmatched Floor Plan Flexibility (Std. 23FBDS, 23FBKS, 25KS, 25BHDS, 25BHKS, 19FD)(Opt. 21DS, 23FB, 23LB)	--	S*	--	--	O*/S*
12 Volt Power Plug Hook-up	S	S	S	S	S	Single Door Auto Gas/Elec. Refrigerator (19FBS, 19FD, 19SB, 17, 183, 19 Only)	--	--	--	S*	S*	Murphy Bed w/ Dinette for Unmatched Floor Plan Flexibility (Opt. 25BHKS)	--	--	--	--	O*
CSA	O	O	O	O	O	Double Door Auto Gas/Elec. Large Refrigerator (N/A 19FD, 19SB, 19FBS)	S	S	S	S	S*	Heated Mattress	O	O	O	SO	SO
Monitor Panel Switch Station	S	S	S	S	S	3 Burner High Output Gas Range w/ Glass Stove Top Cover Gas Oven (Required 21DK, 23IKSS, , 23FBKS, 25DKS, 25KS, 25BHKS)(Included w/ OPG: 19FBS, 19FD, 19SB)	SO	SO	SO	O*	O*	Serta Upgrade Mattress All Walk Around Beds	S	S	S	--	--
55 Amp Converter With Charger	S	S	S	S	S							EXTERIOR FEATURES					
Battery Disconnect Switch	S	S	S	S	S							Fully Laminated Aluminum Frame (Floor, Sidewall, & Roof)	S	S	S	S	S
Solar Panel Prep	S	S	S	S	S							Insulation Factors R-7 Side Wall, R-12 Floor and R-14 Ceiling	S	S	S	S	S
Recessed Ceiling LED 12 Volt Interior Lighting	S	S	S	S	S							Radius Roofs w/ Interior Vaulted Ceilings	S	S	S	S	S
Bunk Fan/Light Combination with Each Bed	--	--	--	S	--							Vinyl / Rubber Composite Roofing Membrane	S	S	S	S	S
Mounted 24" LCD TV (Opt. 19FBS, 19FD, 19SB)	SO	SO	SO	SO	SO*							T V Antenna w/ Cable & Satellite Hook-Up	S	S	S	S	S*
Bedroom Mounted 24" LCD TV (Opt. All UL Models Except 23FBDS, ML: 25BHKS Bunk Room, R: 23IKSS, 233S Only)	O*	O*	O*	O*	O*							Rear Observation Camera Prep w/ Molded Mounting Plate	S	S	S	S	S
32" LCD TV	S	S	S	--	--							Laminated Oyster Colored Fiberglass Sidewalls	EP/SP	EP/SP	EP/SP	SP	SP
5.1 Digital Dolby Surround Sound Speaker System (Required: 27RLWS 29KSWWS, 524RLWS, 526RLWS, 527RLWS)	O	O	O	--	--							Laminated Fiberglass Sidewalls	S	S	S	S	S
Digital AM/FM/CD/DVD w/ Remote	S	S	S	S	S							Distinctive Black Exterior Trim	S	S	S	S	S
MP3 Player Hook-Up	S	S	S	S	S							Electric Slide-Out (All Slide Out Models)	S	S	S	S	S
Decorative Valances	--	--	--	S	S												

MODELS	SV	STT	SFW	S	ML
Lower Front Diamond Plate Panel	--	--	--	--	S
Decorative Frame Skirting (2IDS, 25BHDS, 25FKS Only)	S	S	S	S*	S*
Easy to Reach Lockable Bed Latch System	--	--	--	S	--
Bed Cable System (No Poles)	--	--	--	S	--
Rear Ladder	0	0	0	--	0
Bike Rack Ladder Attachment	0	0	0	0	0
Power Awning With Adjustable Rain Dump and LED Lighting	SO	SO	SO	0	0
Awning (Opt: 19FD, 19FBS, 19SB)	--	--	--	SO	SO*
Awning Slide Topper	0	0	0	0	0
Entrance/Screen Door	--	--	--	S	S
30" Primary Entrance/Screen Door	S	S	S	--	--
Large Assist Grab Handles	SO	SO	SO	S	S
Lighted Entry Step and Scare Light	EP	EP	EP	--	--
Radius Corner Windows and Doors	S	S	S	S	S
Windows w/ Tinted Safety Glass	SO	SO	SO	SO	SO
Tinted Bonded Frameless Windows	EP/SP	EP/SP	EP/SP	SP	SP
Thermopane Windows	0	0	0	0	0
Large Dinette Picture Window (N/A 19FD, 19SB, 25BHKS)	S	S	S	S	S*
Outside Grill Prep	S	S	S	S	S
Outside Gas Grill and Worktable (Opt: 19FBS, 19FD, 19SB)	SO	SO	SO	0	SO*
Outside Speakers	SO	SO	SO	SO	SO
Outside Shower	S	S	S	S	S
1/2 Sliding Storage Tray (N/A 19FD, 19SB, 23FB and All Models w/ Murphy Bed) (Opt: 23FBDS, 17, 183, 19, 21SS, 21SSL, 23IKSS)	0*	0*	--	0*	0*
Outside Antifreeze Stations	S	S	S	S	S
Front Outside "Trunk" Storage Separated From Heated Pass Thru Storage Compartments	--	--	S	--	--
Slam Latches on Both Side Pass Thru Storage Doors & Front Compartment Door	--	--	EP	--	--
Slam Latches on Storage Doors	EP	EP	EP	--	--
Two-20 Lb Gas Bottles (19FD, 19SB, 19FBS Only)	--	--	--	S	S*
Two-30 Lb Gas Bottles	S	S	S	--	S*
Enclosed Gas Bottles w/ Storage Door Access	S	--	S	--	--
Molded Bottle Cover	--	S	--	S	S
Surface Coated Steel I-Beam Frame (N/A 19FBS, 19FD, 19SB)	S	S	S	S	S*
Reese Revolution Hitch	--	--	S	--	--
8' X 8' Front Storage Deck: 1300 LBS. Max Capacity (21SSL Only)	--	--	--	S*	--
2' X 8' Front Storage Deck W/ Enclosed Storage: Compartment: 350 LBS. Max Capacity (21BD Only)	--	--	--	S*	--
Fuel Station with 18 Gallon Capacity (Gasoline Only) (Opt. 21SSL Only)	--	--	--	0	--

MODELS	SV	STT	SFW	S	ML
Toylok Mounted Locking System (21BD, 21SSL Only)	--	--	--	S*	--
Power Front Landing Jacks	--	--	S	--	--
Power Tongue Jack	0	0	--	0	0
Stabilizer Jacks	S	S	S	S	S
Power Stabilizer Jacks (Fifth Wheels: Rear Jacks only)	0	0	0	--	--
Torsion Axle, Rubber-Ryde Suspension	S	S	S	S	S
Easy Lube Axles and Nev-R Adjust Brakes	S	S	S	S	S
15" Radial Tires w/ Nitro Fill	S	S	S	--	--
Radial Tires w/ Nitro Fill (19FB, 19SB, 19FBS, 17 Sham. w/ Single Axle)	--	--	--	S	S
Double or Triple Entry Step	S	S	S	S	S
Off Road Package (Includes: 15" Off Road Tires and Aluminum Wheels) (21SSL Only)	--	--	--	S*	--
Chrome-look Wheel Covers	0	0	0	0	0
Aluminum Wheels	0/EP/SP	0/EP/SP	0/EP/SP	0/SP	0/SP
Spare Tire Carrier & Cover	SO	SO	SO	0	SO
Electronically Controlled Heated Holding Tanks	0	0	0	0	0
Enclosed Holding Tanks	S	S	S	--	--
Black Water Flush	S	S	S	S	S
EMERALD PACKAGE INCLUDES:	0	0	0	--	--
Oyster Colored Fiberglass					
Deep Tinted Frameless Bonded Windows					
Slam Latches on Storage Doors					
Exterior Step and "Scare" Light					
Aluminum Wheels					
Solid Surface Corian Kitchen Counter top					
Upgraded Slide Fascia					
SAPPHIRE PACKAGE INCLUDES:	0	0	0	0	0
Oyster Colored Fiberglass					
Deep Tinted Frameless Bonded Windows					
Aluminum Wheels					
CONVENIENCE PKG. B INCLUDES:	SO	SO	SO	--	--
13,500 BTU Ducted Air					
Mounted 24" LCD TV w/ AM/FM Stereo, CD, DVD Player					
Gas Oven					
Microwave Oven					
110 DSI Gas/Electric Six Gallon "Quick Recovery" Water Heater					

MODELS	SV	STT	SFW	S	ML
Power Awning w/ LED Lighting					
Large Assist Grab Handle					
Windows w/ Tinted Safety Glass					
Outside Grill and Worktable					
Spare Tire Carrier & Cover					
Outside Speakers					
CONVENIENCE PACKAGE C INCLUDES:	--	--	--	SO	--
13,500 BTU Roof A/C (17, 183, 19)					
13,500 BTU Ducted Air (21BD, 21DK, 21SS, 21SSL, 23IKSS, 23WS, 233S)					
Mounted 24" LCD TV w/ TV Antenna & Cable Hook-up					
Microwave Oven					
110 DSI Gas/Electric Six Gallon "Quick Recovery" Water Heater					
Awning					
Windows w/ Tinted Safety Glass					
Outside Speakers					
OPTION PKG. G INCLUDES: (19FBS, 19FD, 19SB ONLY)	--	--	--	--	SO*
Gas Oven					
Microwave Oven					
110 DSI Gas/Electric Six Gallon "Quick Recovery" Water Heater					
TV Antenna w/ Cable & Satellite Hook-up					
Spare Tire Carrier & Cover					
Outside Speakers					
CONVENIENCE PKG. A INCLUDES: (N/A 19FBS, 19FD, 19SB)	--	--	--	--	SO*
13,500 BTU Ducted Air					
Mounted 24" LCD TV w/ AM/FM Stereo, CD, DVD Player					
Microwave Oven					
110 DSI Gas/Electric Six Gallon "Quick Recovery" Water Heater					
Awning					
Windows w/ Tinted Safety Glass					
Outside Grill and Worktable					
Outside Speakers					
Spare Tire Carrier & Cover					

SV = SUPER V, STT = SUPER LITE TRAVEL TRAILER, SFW = SUPER LITE FIFTH WHEEL, S = SHAMROCK, M = MICRO LITE
 S = STANDARD, SO = STANDARD OPTION, 0 = OPTIONAL, -- NOT AVAILABLE, EP = EMERALD PACKAGE, SP = SAPPHIRE PACKAGE, * = SELECTED MODELS



PRE-DELIVERY INSPECTION FACILITY

20,000 square feet of quality assurance. The bare essentials for a premium product. This state-of-the-art facility gives immediate daily feedback to production for quality assurance in every unit built.



Forest River, Inc. encourages our customers to purchase their Forest River products from a local dealership whenever possible for the following reasons:

- 1) Forest River, Inc. dealers are independently owned and operated businesses so priority service and scheduling is at their discretion and is often provided to customers that purchased their unit at that dealership.
- 2) Purchasing locally allows customers to establish meaningful relationships with a dealer, enhancing the RV experience through assistance with product questions, user tips or RV regulations for your state or country, and much more!
- 3) Canadian customers must meet requirements to bring an RV purchased out of the country to their home. These requirements may involve additional inspections and certifications, taxes and fees. Your local Canadian Dealer is a professional at meeting these requirements.
- 4) Scheduling timely warranty repairs and adjustments through a local dealership provides far greater flexibility and convenience to you, the customer!

It is the goal of Forest River, Inc. that all of our RV owners fully enjoy the RV experience and that customer satisfaction meets or exceeds their expectations!

24/7 EMERGENCY ROADSIDE ASSISTANCE

For a worry-free ownership experience Forest River includes one year of Coach-Net RV Technical & Roadside Assistance with each RV purchase. Whether new to the RV lifestyle or an experienced RV enthusiast, Forest River owners have 24/7 access to technical, operational and emergency road service coverage throughout the US & Canada. Coach-Net's fast, dependable service is just a phone call away.

Coach-Net®
RV Technical & Roadside Assistance



Specification Definitions

GVWR (Gross Vehicle Weight Rating) - is the maximum permissible weight of the unit when fully loaded. It includes all weights, inclusive of all fluids, cargo, optional equipment and accessories. For safety and product performance do NOT exceed the GVWR.

GAWR (Gross Axle Weight Rating) - is the maximum permissible weight, including cargo, fluids, optional equipment and accessories that can be safely supported by a combination of all axles.

UVW (Unloaded Vehicle Weight) - is the typical weight of the unit as manufactured at the factory. It includes all weight at the unit's axle(s) and tongue or pin and LP Gas. The UVW does not include cargo, fresh potable water, additional optional equipment or dealer installed accessories.

*Estimated average based on standard build optional equipment.

CCC (Cargo Carrying Capacity)** - is the amount of weight available for fresh potable water, cargo, additional optional equipment and accessories. CCC is equal to GVWR minus UVW. Available CCC should accommodate fresh potable water (8.3 lbs per gallon). Before filling the fresh water tank, empty the black and gray tanks to provide for more cargo capacity.

** Estimated average based on standard build optional equipment

Each Forest River RV is weighed at the manufacturing facility prior to shipping. A label identifying the unloaded vehicle weight of the actual unit and the cargo carrying capacity is applied to every Forest River RV prior to leaving our facilities.

The load capacity of your unit is designated by weight, not by volume, so you cannot necessarily use all available space when loading your unit.

LOOK FOR OUR OTHER POPULAR LINES OF FLAGSTAFF CAMPING TRAILERS.



MAC, SE, Classic, High Wall & Hard Side Camping Trailers.



V-Lite, Classic Super Lite TT & FW

FLAGSTAFF

WARRANTY

FOR DETAILS ON FLAGSTAFF'S COMPLETE WARRANTY PROGRAM, SEE YOUR FLAGSTAFF DEALER. When it comes to backing products with the same quality and commitment it does when it begins the manufacturing process, the only name you have to remember when you're looking for a recreational vehicle is Flagstaff. Flagstaff offers the following additional limited warranties to the original purchasers. Consult written warranty for details.

1. Twelve-year vinyl roof warranty,
2. Two-year fiberglass warranty,
3. Five-year axle warranty,
4. Five-year tent warranty,
5. One-year bumper to bumper warranty,
6. Available second-year warranty



Learn More
Scan this barcode using a QR Reader on your smart phone to learn more about Forest River.



A Berkshire Hathaway company.



201 WEST ELM MILLERSBURG, IN 46543 WWW.FORESTRIVERINC.COM/FLAGSTAFF 574.642.2640

YOUR FLAGSTAFF DEALER

All information contained in this brochure is believed to be accurate at the time of publication. However, during the model year, it may be necessary to make revisions and Forest River, Inc., reserves the right to make all such changes without notice, including prices, colors, materials, equipment and specifications as well as the addition of new models and the discontinuance of models shown in this brochure. Therefore, please consult with your Forest River dealer and confirm the existence of any materials, design or specifications that are material to your purchase decision. Litho. U.S.A. W-2016.02.16