

COLUMBUS BY PALOMINO



EXPLORE THE ULTIMATE FIFTH WHEEL

COLUMBUS BY PALOMINO

COLUMBUS BY PALOMINO



EXPLORE THE ULTIMATE FIFTH WHEEL

COLUMBUS BY PALOMINO



The 366RL, pictured above in Espresso Cherry wood, tile look floor and Antigua interior, has a super island with mini wine cooler, double bowl stainless steel sink, solid surface countertops and the floor plan offers a full pantry, prep sink and an outside kitchen. Columbus offers La-Z-boy furniture, up to date lighting fixtures, residential backsplash, modern window treatments and ample storage space.



ANTIGUA



CORONADO



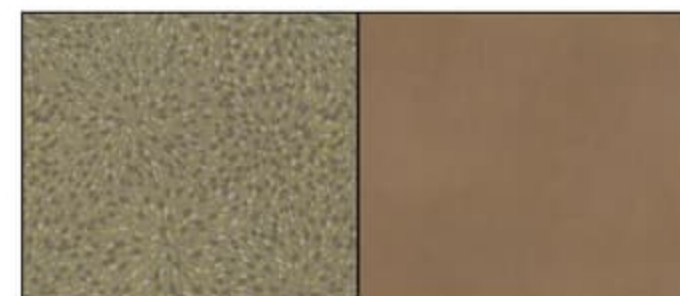
METROPOLITAN



The 366RL, pictured above in Espresso Cherry wood, tile look floor and Antigua interior, has a super island with mini wine cooler, double bowl stainless steel sink, solid surface countertops and the floor plan offers a full pantry, prep sink and an outside kitchen. Columbus offers La-Z-boy furniture, up to date lighting fixtures, residential backsplash, modern window treatments and ample storage space.



ANTIGUA



CORONADO



METROPOLITAN

EXPLORE THE ULTIMATE FIFTH WHEEL



Reinforced Dovetail Drawers



LED TV with Bluetooth Soundbar



Solid Cherry Slide Fascia

The Columbus 386FK kitchen boasts residential refrigerator options, a full size lazysusan, appliance garage, residential range hood and comfortable seating for the option of entertaining friends or an at home feel with your family. 20 cu ft residential refer, Chestnut Cherry wood and tile look floor pictured left.



The 298RLC pictured left in Chestnut Cherry wood, Metropolitan cloth interior and tile look floor offers luxury feel in a smaller length at 36' 9" total, plus an outside kitchen. 48" LED TV's with soundbar and DVD player comes standard and the entertainment center allows for loads of storage with plenty of room to spread out and relax.



Columbus offers 2 exterior colors. White, shown above, and Cream.

EXPLORE THE ULTIMATE FIFTH WHEEL



Reinforced Dovetail Drawers



LED TV with Bluetooth Soundbar



Solid Cherry Slide Fascia

The Columbus 386FK kitchen boasts residential refrigerator options, a full size lazysusan, appliance garage, residential range hood and comfortable seating for the option of entertaining friends or an at home feel with your family. 20 cu ft residential refer, Chestnut Cherry wood and tile look floor pictured left.



The 298RLC pictured left in Chestnut Cherry wood, Metropolitan cloth interior and tile look floor offers luxury feel in a smaller length at 36' 9" total, plus an outside kitchen. 48" LED TV's with soundbar and DVD player comes standard and the entertainment center allows for loads of storage with plenty of room to spread out and relax.



Columbus offers 2 exterior colors. White, shown above, and Cream.



The 383FB half bath, pictured above, designed with residential details, provides an additional linen closet, solid surface countertop with deep sink and porcelain toilet. Rich hand-rubbed, raised panel cherry hardwood cabinetry, five inch drawer handles, durable dovetail drawers with reinforced bottoms and attractive raised panel cabinet doors and hidden hinges create an upscale feeling of home in the large front bath, pictured right, in Espresso Cherry wood, with solid surface countertops and a double bowl vanity, this floorplan offers a true walk in closet, plenty of storage and washer and dryer hookup. All Columbus models offer 60"x30" residential showers with triple sliding glass shower doors, built in seat and oversized skylight.



The Columbus bedroom offers a pillowtop mattress, stylish headboard and beautiful comforter and pillow set. Cherry hardwood presstop dresser, an industry leading bed slide height for more head room, and a revamped front closet with sliding glass doors to provide full access completes the distinctive style for any fifth wheel enthusiast.

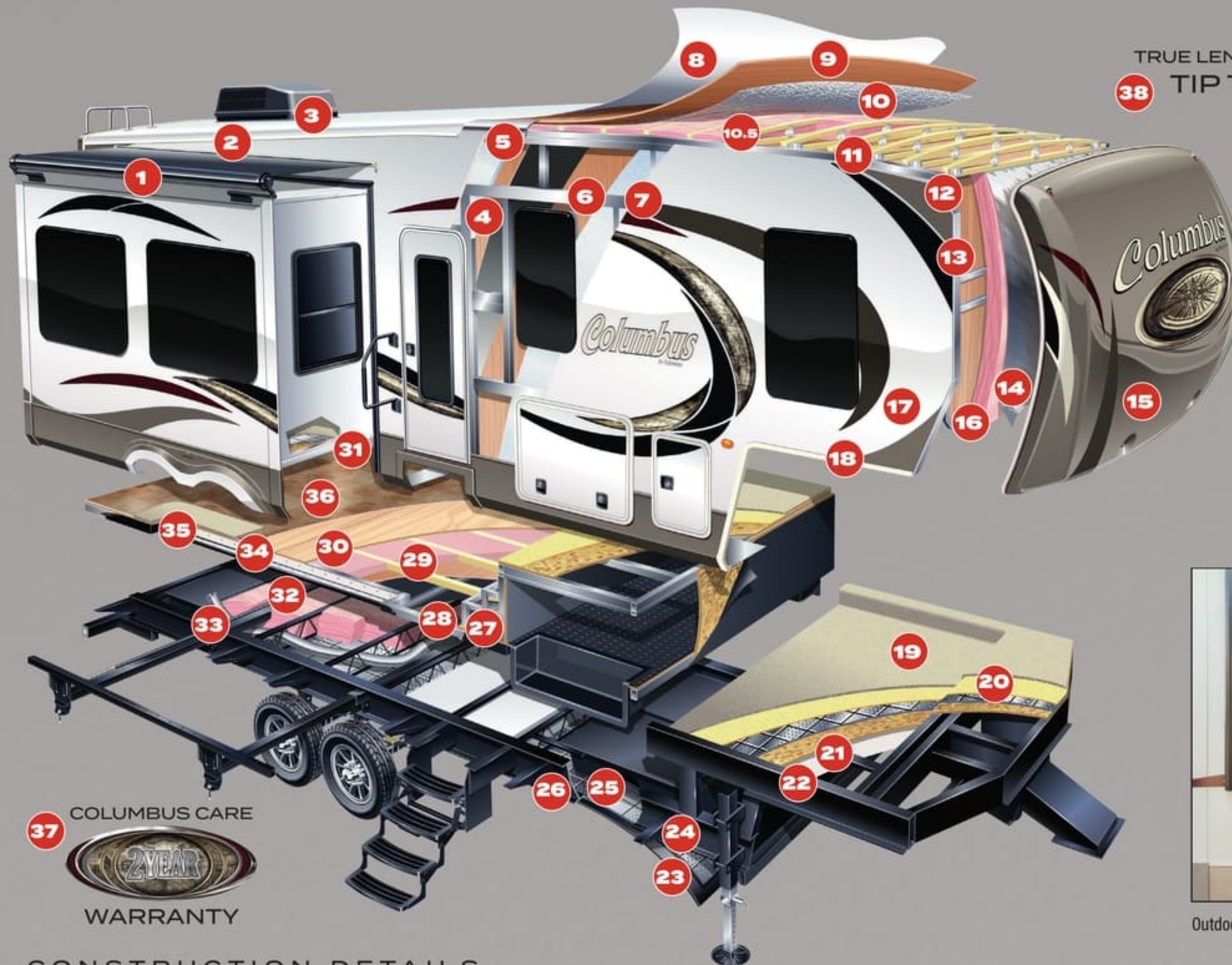


The 383FB half bath, pictured above, designed with residential details, provides an additional linen closet, solid surface countertop with deep sink and porcelain toilet. Rich hand-rubbed, raised panel cherry hardwood cabinetry, five inch drawer handles, durable dovetail drawers with reinforced bottoms and attractive raised panel cabinet doors and hidden hinges create an upscale feeling of home in the large front bath, pictured right, in Espresso Cherry wood, with solid surface countertops and a double bowl vanity, this floorplan offers a true walk in closet, plenty of storage and washer and dryer hookup. All Columbus models offer 60"x30" residential showers with triple sliding glass shower doors, built in seat and oversized skylight.



The Columbus bedroom offers a pillowtop mattress, stylish headboard and beautiful comforter and pillow set. Cherry hardwood presstop dresser, an industry leading bed slide height for more head room, and a revamped front closet with sliding glass doors to provide full access completes the distinctive style for any fifth wheel enthusiast.





TRUE LENGTHS FROM
TIP TO TIP



Maxx Air Fan



Optional Metal Wrap Awning

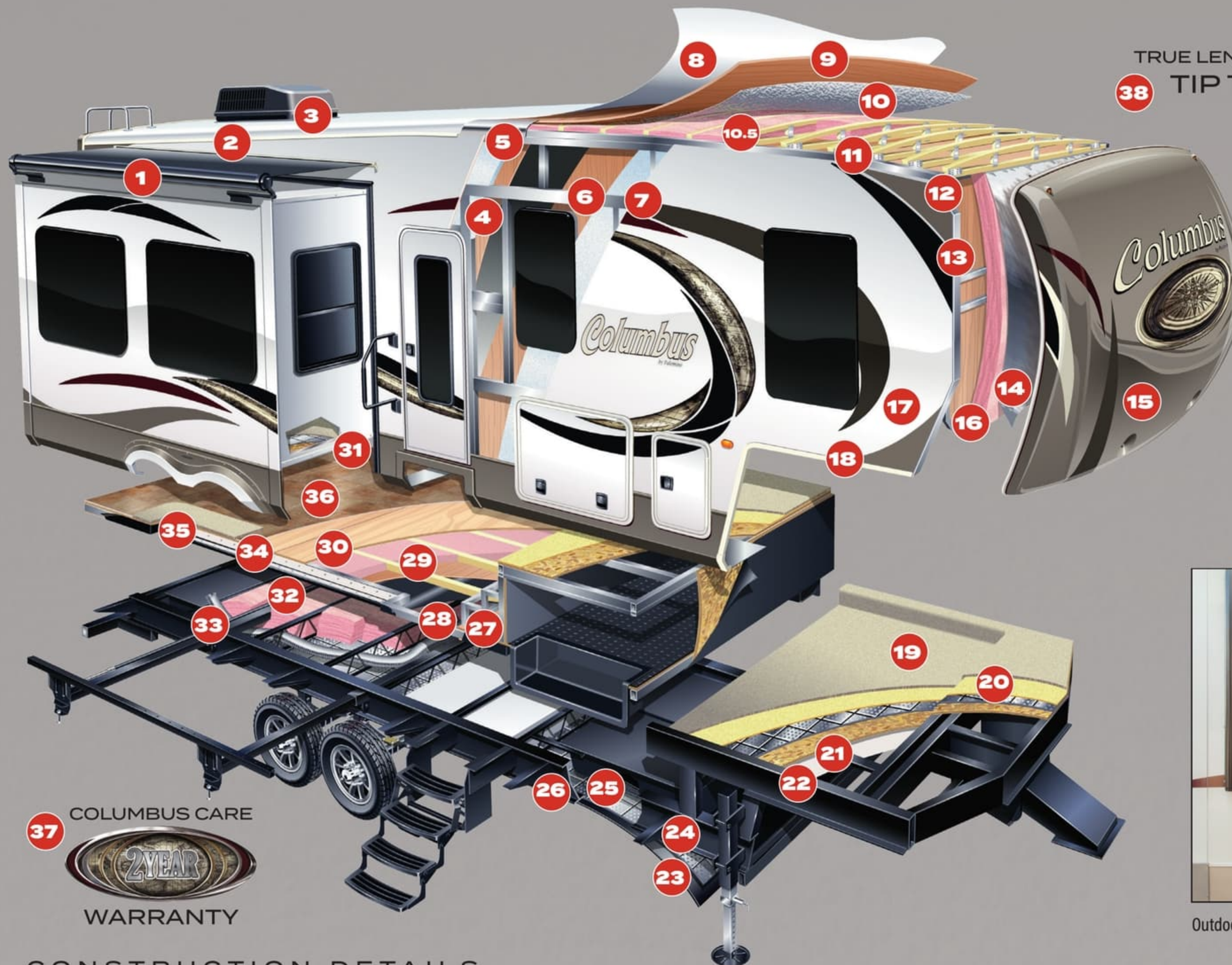


Outdoor Kitchen Available On 298RL, 366RL and 385BH

37 COLUMBUS CARE
2 YEAR
WARRANTY

CONSTRUCTION DETAILS

- | | | | | |
|-------------------------------------|----------------------------|---------------------------------------|------------------------------------|-------------------------------------|
| 1. Optional Slide Toppers | 9. 3/8" Decking | 16. Double Spun Fiberglass Insulation | 24. Astro Foil Insulation | 32. Fiberglass Insulation |
| 2. Roof R-40 | 10. Astro Foil Insulation | 17. Sidewall R-11 | 25. Heat Pad On All Tanks | 33. Separate Heat Runs |
| 3. Coleman Serenity Air Conditioner | 10.5 Fiberglass Insulation | 18. Fiberglass Exterior | 26. I-Beam Frame | 34. Floor R-38 |
| 4. Aluminum Wall Frame | 11. Wood Trusses | 19. Carpet | 27. Step Above Entry Step | 35. Carpeted Slide Outs |
| 5. Aluminum Radius | 12. Luan | 20. Pad | 28. Darco Wrap | 36. Designer Flooring |
| 6. Luan | 13. Aluminum Wall Frame | 21. 5/8" OSB | 29. Fiberglass | 37. Columbus Care Two Year Warranty |
| 7. Foam Insulation | 14. Astro Foil Insulation | 22. Fiberglass Insulation | 30. 5/8" Tongue and Groove Plywood | 38. True Lengths from Tip to Tip |
| 8. TPO | 15. Painted Front Cap | 23. Corrugated Plastic Underbelly | 31. Astro Foil Insulation | |



TRUE LENGTHS FROM
TIP TO TIP



Maxx Air Fan



Optional Metal Wrap Awning

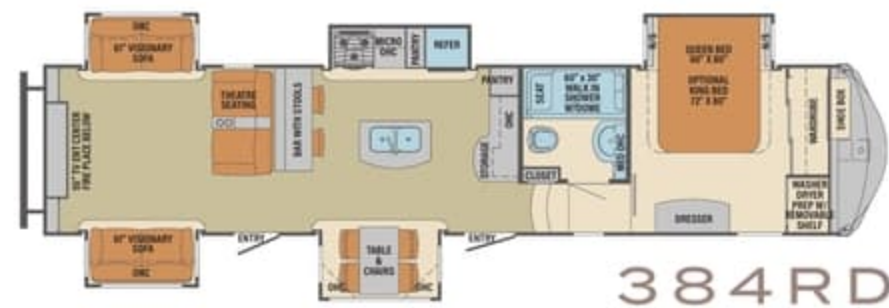
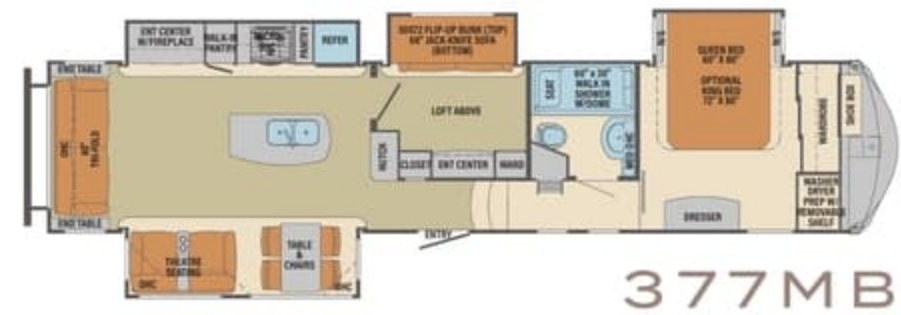
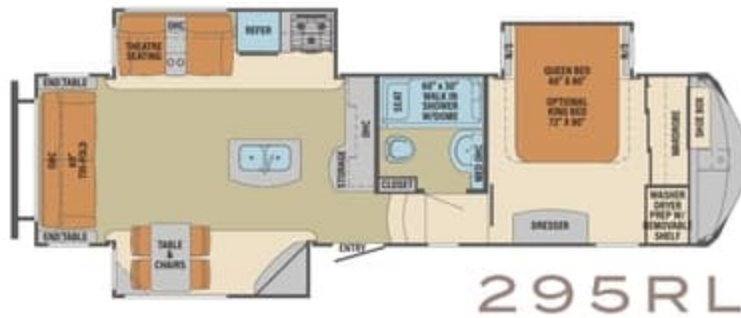


Outdoor Kitchen Available On 298RL, 366RL and 385BH



CONSTRUCTION DETAILS

- | | | | | |
|-------------------------------------|----------------------------|---------------------------------------|------------------------------------|-------------------------------------|
| 1. Optional Slide Toppers | 9. 3/8" Decking | 16. Double Spun Fiberglass Insulation | 24. Astro Foil Insulation | 32. Fiberglass Insulation |
| 2. Roof R-40 | 10. Astro Foil Insulation | 17. Sidewall R-11 | 25. Heat Pad On All Tanks | 33. Separate Heat Runs |
| 3. Coleman Serenity Air Conditioner | 10.5 Fiberglass Insulation | 18. Fiberglass Exterior | 26. I-Beam Frame | 34. Floor R-38 |
| 4. Aluminum Wall Frame | 11. Wood Trusses | 19. Carpet | 27. Step Above Entry Step | 35. Carpeted Slide Outs |
| 5. Aluminum Radius | 12. Luan | 20. Pad | 28. Darco Wrap | 36. Designer Flooring |
| 6. Luan | 13. Aluminum Wall Frame | 21. 5/8" OSB | 29. Fiberglass | 37. Columbus Care Two Year Warranty |
| 7. Foam Insulation | 14. Astro Foil Insulation | 22. Fiberglass Insulation | 30. 5/8" Tongue and Groove Plywood | 38. True Lengths from Tip to Tip |
| 8. TPO | 15. Painted Front Cap | 23. Corrugated Plastic Underbelly | 31. Astro Foil Insulation | |



CONSTRUCTION

- 101" wide body
- All welded aluminum frame superstructure
- laminated sidewalls and slide boxes
- 5/8 tongue-groove plywood floor
- R40 Residential 5" radius Wood Truss Roof
- 6'6" height slides (living area slides)
- (5) heat ducts out of interior traffic areas
- Snap-in ceiling molding-no staples or tape
- 12V heat pads on all holding tanks
- R38 floor insulation
- R40 roof insulation
- R11 sidewall insulation
- EZ Flex Dexter Axles Easylube Axles w/NEV-R adjust brakes
- 16" wheels w/nitro fill tires

INTERIOR

- Large frameless tinted windows throughout
- Hidden hinges
- Dovetail constructed reinforced drawers with upgraded hardware
- Upgraded crack/mold/mildew-resistant flooring
- Upgrade true solid surface countertops bath/kitchen
- LED lights
- Residential crown molding throughout unit
- Cherry hardwood slide fascia
- 24 ounce carpet
- Roller night shades
- Cherry hardwood steps
- Central vacuum system
- Large entry closet for jacket / shoe storage

EXTERIOR

- Metal slam latches on all storage doors
- Magnetic Compartment Door Holds
- 2-tone aluminum wheels
- 2-tone wheel well skirting
- Painted fiberglass front cap
- 2 exterior color choices with champagne metal skirting (cream, white)
- Heated utility convenience center
- Black tank flush
- Outside AM/FM/Bluetooth receiver with USB port and exterior speakers
- Electric rear stabilizer jacks
- Outside shower
- 3-20 lb LP tanks with auto switch (EZ replacement)
- Full view entry door w/window and screen door
- Quick battery disconnect
- Power awning w/LED lighting
- 7000 lb axles (all models)

- Crank down spare tire
- Storage rack in front compartment

FURNITURE

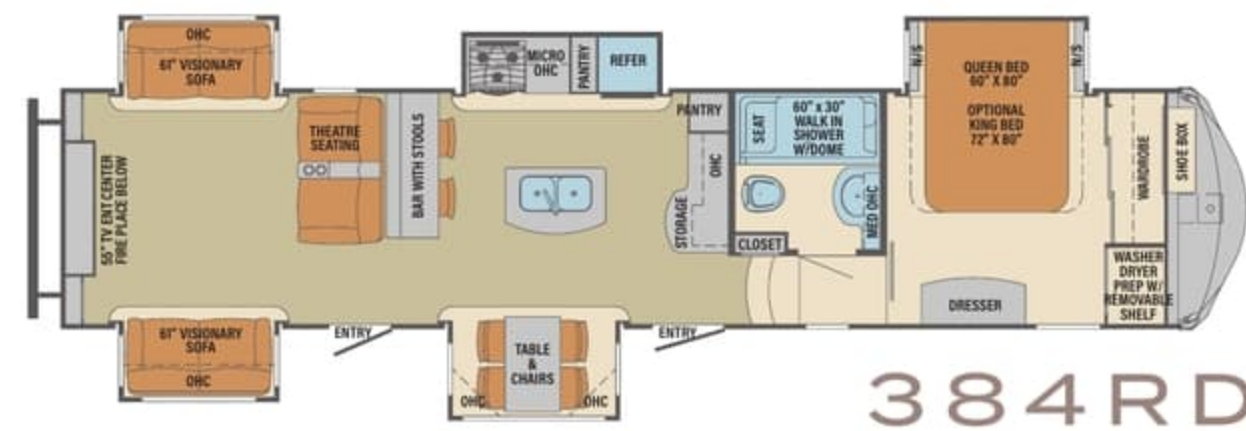
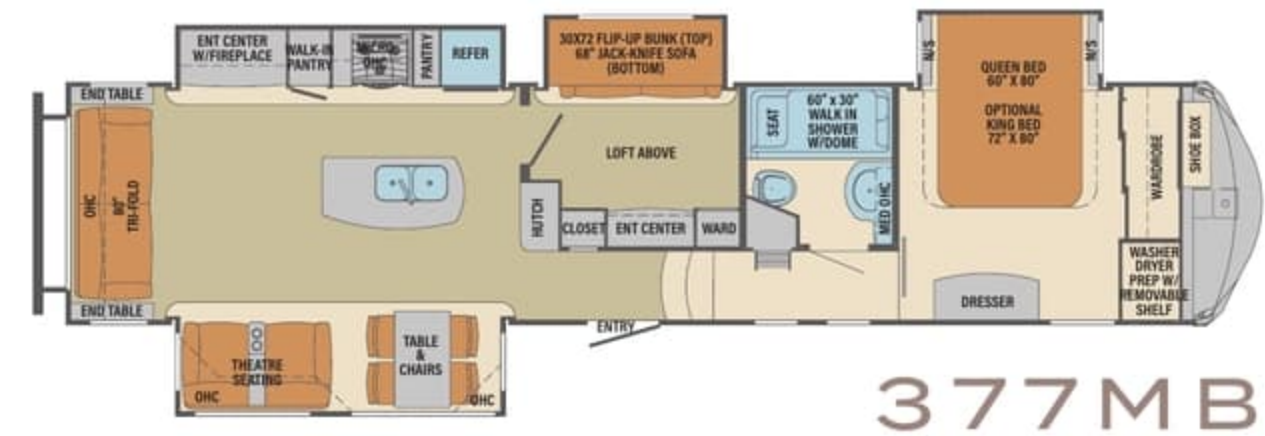
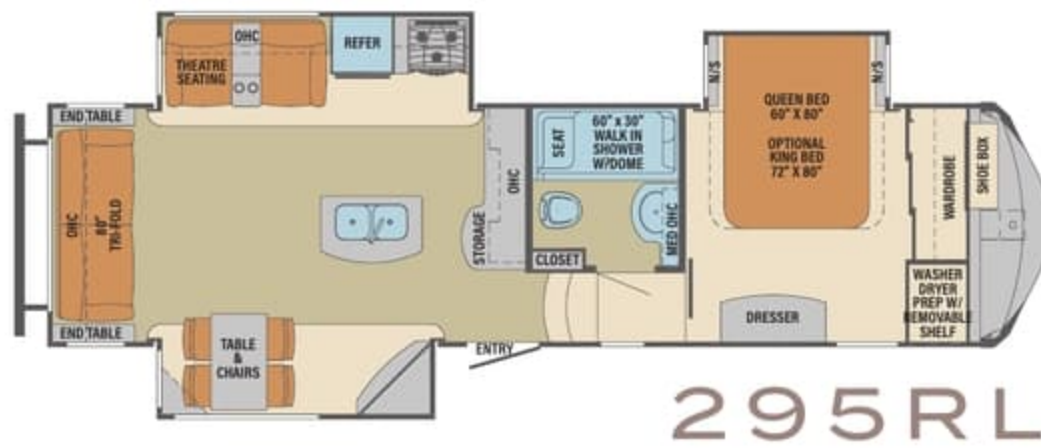
- Lazy Boy residential theater seating w/storage
- Lazy Boy 80" tri-fold sofa (per model)
- Cherry hardwood entertainment and end table tops
- Residential high end dining chairs with storage

BEDROOM

- Wall mounted / framed TV cabinet
- Cherry hardwood dresser top
- Pillow top mattress
- (3) French mirrored sliding closet doors
- High end bedspread / pillows

APPLIANCES

- Upgrade 8 cu ft refrigerator w/adjustable temp settings and raised panel doors
- 48" LED TV w/Sound Bar and Blu-Ray
- 10 gallon water heater w/quick recovery
- Cell phone / ipad charging station
- Washer / dryer prep
- Full system water purifier
- 30" residential convection oven microwave
- 15,000 BTU high output Coleman Serenity A/C
- 35,000 BTU furnace



CONSTRUCTION

- 101" wide body
- All welded aluminum frame superstructure
- laminated sidewalls and slide boxes
- 5/8 tongue-groove plywood floor
- R40 Residential 5" radius Wood Truss Roof
- 6"6" height slides (living area slides)
- (5) heat ducts out of interior traffic areas
- Snap-in ceiling molding-no staples or tape
- 12V heat pads on all holding tanks
- R38 floor insulation
- R40 roof insulation
- R11 sidewall insulation
- EZ Flex Dexter Axles Easylube Axles w/NEV-R adjust brakes
- 16" wheels w/nitro fill tires

INTERIOR

- Large frameless tinted windows throughout
- Hidden hinges
- Dovetail constructed reinforced drawers with upgraded hardware
- Upgraded crack/mold/mildew-resistant flooring
- Upgrade true solid surface countertops bath/kitchen
- LED lights
- Residential crown molding throughout unit
- Cherry hardwood slide fascia
- 24 ounce carpet
- Roller night shades
- Cherry hardwood steps
- Central vacuum system
- Large entry closet for jacket / shoe storage

EXTERIOR

- Metal slam latches on all storage doors
- Magnetic Compartment Door Holds
- 2-tone aluminum wheels
- 2-tone wheel well skirting
- Painted fiberglass front cap
- 2 exterior color choices with champagne metal skirting (cream, white)
- Heated utility convenience center
- Black tank flush
- Outside AM/FM/Bluetooth receiver with USB port and exterior speakers
- Electric rear stabilizer jacks
- Outside shower
- 3-20 lb LP tanks with auto switch (EZ replacement)
- Full view entry door w/window and screen door
- Quick battery disconnect
- Power awning w/LED lighting
- 7000 lb axles (all models)

- Crank down spare tire
- Storage rack in front compartment

FURNITURE

- Lazy Boy residential theater seating w/storage
- Lazy Boy 80" tri-fold sofa (per model)
- Cherry hardwood entertainment and end table tops
- Residential high end dining chairs with storage

BEDROOM

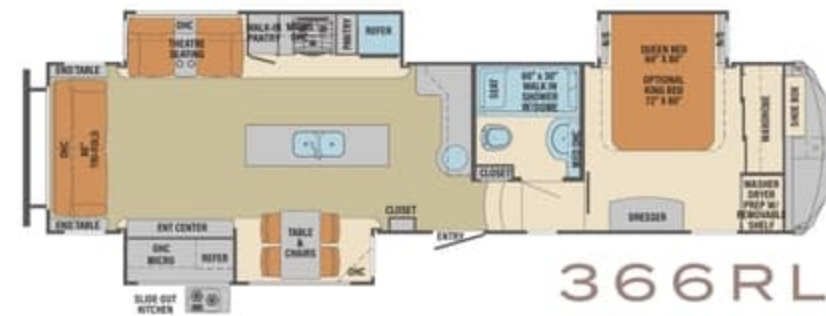
- Wall mounted / framed TV cabinet
- Cherry hardwood dresser top
- Pillow top mattress
- (3) French mirrored sliding closet doors
- High end bedspread / pillows

APPLIANCES

- Upgrade 8 cu ft refrigerator w/adjustable temp settings and raised panel doors
- 48" LED TV w/Sound Bar and Blu-Ray
- 10 gallon water heater w/quick recovery
- Cell phone / ipad charging station
- Washer / dryer prep
- Full system water purifier
- 30" residential convection oven microwave
- 15,000 BTU high output Coleman Serenity A/C
- 35,000 BTU furnace



340RK



366RL



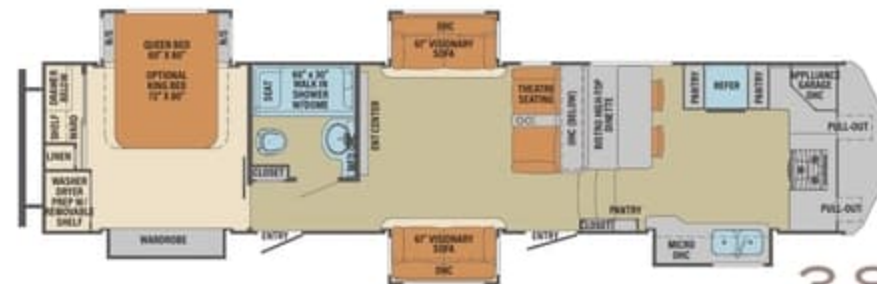
381FL



383FB



385BH



386FK

KITCHEN

- Recessed solid surface sink covers
- Residential under counter storage
- Recessed solid surface range cover
- Residential glass backsplash
- Additional lighting above sink area
- Large double bowl stainless steel sink
- Single lever faucet w/pull out sprayer
- Movable island (320)
- Trash can with dedicated storage (some models)

BATHROOM

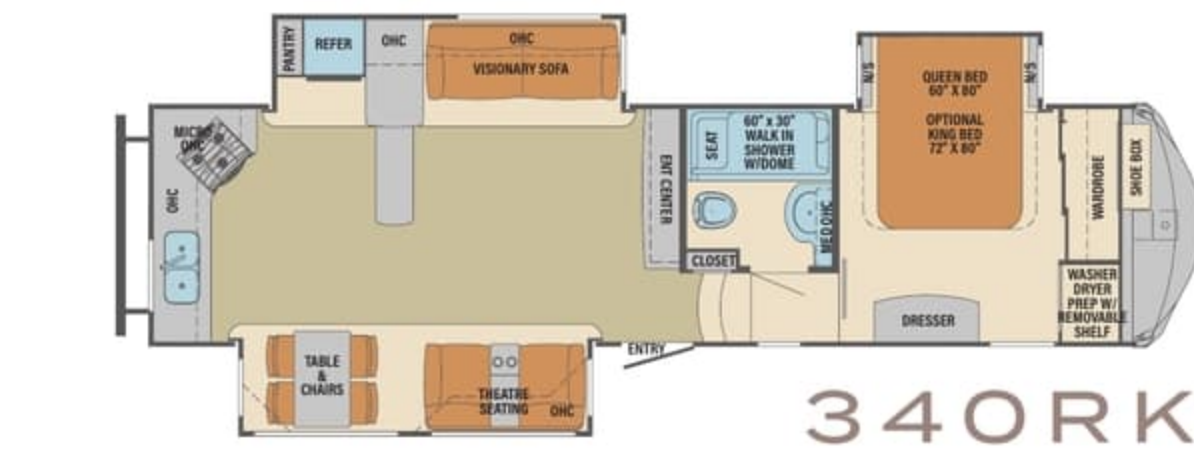
- 60" x 30" one piece fiberglass shower w/seat & built in shelves for toiletries
- Solid surface counter top
- 3 speed power vent
- Porcelain toilet
- Towel rack built into door

OPTIONS

- 13.5 Coleman Serenity bedroom A/C -(std 386)
- Trail air rota flex pin box
- Electric fireplace
- 3 slide toppers (295, 298, 320, 340, 366, 383, 384, 386)
- 4 slide toppers (377, 381)
- 5 slide toppers (385)
- 6 POINT HYDRAULIC LEVEL UP
- Stackable washer / dryer
- Dual pane windows
- Keyless entry door lock
- MCD UV reflective day shades
- 32" bedroom LED TV w/Sounds Bar
- 32" bunkroom LED TV (377, 385)
- Bedroom Maxx Fan w/Rain HOOD
- Kitchen Maxx Fan w/Rain HOOD (available most models, Std 386FK)

- 20cu ft residential refrigerator w/Inverter (n/a 295)
- 18 cu ft gas electric refrigerator (n/a 295)
- King bed
- Serta destination series mattress
- Bike rack (n/a w/rear cap)
- Fiberglass rear cap (n/a w/bike rack)
- Generator prep
- 5/5 generator install (includes gen prep)
- Wood-look floor
- Tile-look floor
- 2 Lazy Boy brand recliners (n/a 298, 366)
- Wireless back up camera
- Metal wrapped awning
- Goodyear G rated tires w/upgraded rims
- 200 Watt Solar Panel (installed)
- Dyson Air Purification System

- **Voyager package includes:** Frameless Windows, Full System Water Purifier, 48" LED TV, Sound Bar, Quick Battery Disconnect, Ext AM/FM/iPOD/CD w/2 Speakers, Cherry Hardwood Slide Out Fascia, 2 Tone Alum Wheels, 1 Piece Fiberglass Shower, 12 Volt Heat Pads on Tanks, LED Awning Lights, Mor/ryde Step Above Entry Steps, Mor/ryde CRE/3000 Suspension, Syphon 360 Vent Caps, MCD Night Roller Shades, Friction Hinge Full Length Window Main Entry Door, Go Power Solar Prep, MyRV System, Decorative Area Rug



340RK



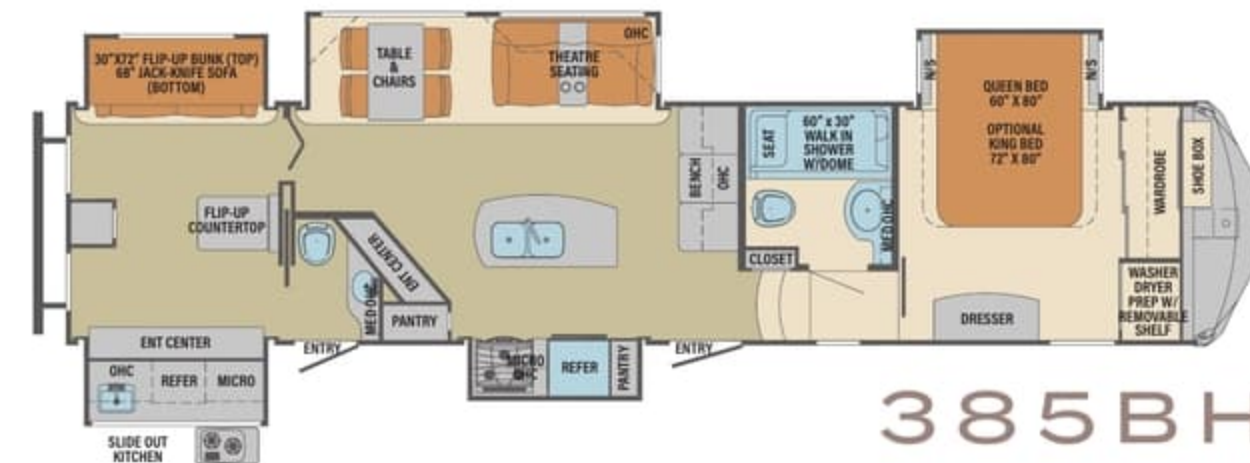
366RL



381FL



383FB



385BH



386FK

KITCHEN

- Recessed solid surface sink covers
- Residential under counter storage
- Recessed solid surface range cover
- Residential glass backsplash
- Additional lighting above sink area
- Large double bowl stainless steel sink
- Single lever faucet w/pull out sprayer
- Movable island (320)
- Trash can with dedicated storage (some models)

BATHROOM

- 60" x 30" one piece fiberglass shower w/seat & built in shelves for toiletries
- Solid surface counter top
- 3 speed power vent
- Porcelain toilet
- Towel rack built into door

OPTIONS

- 13,5 Coleman Serenity bedroom A/C -(std 386)
- Trail air rota flex pin box
- Electric fireplace
- 3 slide toppers (295, 298, 320, 340, 366, 383, 384, 386)
- 4 slide toppers (377, 381)
- 5 slide toppers (385)
- 6 POINT HYDRAULIC LEVEL UP
- Stackable washer / dryer
- Dual pane windows
- Keyless entry door lock
- MCD UV reflective day shades
- 32" bedroom LED TV w/Sounds Bar
- 32" bunkroom LED TV (377, 385)
- Bedroom Maxx Fan w/Rain HOOD
- Kitchen Maxx Fan w/Rain HOOD (available most models, Std 386FK)

- 20cu ft residential refrigerator w/Inverter (n/a 295)
- 18 cu ft gas electric refrigerator (n/a 295)
- King bed
- Serta destination series mattress
- Bike rack (n/a w/rear cap)
- Fiberglass rear cap (n/a w/bike rack)
- Generator prep
- 5/5 generator install (includes gen prep)
- Wood-look floor
- Tile-look floor
- 2 Lazy Boy brand recliners (n/a 298, 366)
- Wireless back up camera
- Metal wrapped awning
- Goodyear G rated tires w/upgraded rims
- 200 Watt Solar Panel (installed)
- Dyson Air Purification System

- **Voyager package includes:** Frameless Windows, Full System Water Purifier, 48" LED TV, Sound Bar, Quick Battery Disconnect, Ext AM/FM/iPOD/CD w/2 Speakers, Cherry Hardwood Slide Out Fascia, 2 Tone Alum Wheels, 1 Piece Fiberglass Shower, 12 Volt Heat Pads on Tanks, LED Awning Lights, Mor/ryde Step Above Entry Steps, Mor/ryde CRE/3000 Suspension, Syphon 360 Vent Caps, MCD Night Roller Shades, Friction Hinge Full Length Window Main Entry Door, Go Power Solar Prep, MyRV System, Decorative Area Rug

2017 COLUMBUS 5TH WHEELS BY PALOMINO

	CMF295RL	CMF298RL	CMF320RS	CMF340RK	CMF366RL	CMF374BH	CMF377MB	CMF381FL	CMF383FB	CMF384RD	CMF385BH	CMF386FK
HITCH WEIGHT	2,142	2,132	2,167	2,138	2,473	TBD	2,378	2,369	2,632	2,490	2,170	2619
UVW Unloaded Vehicle Weight	10,667	10,576	10,744	11,566	11,878	TBD	13,006	12,781	13,164	12,617	13,103	12843
GVWR Gross Vehicle Weight Rating	13,667	13,576	13,744	14,566	14,878	TBD	16,006	15,781	16,164	15,617	16,103	15846
CCC Cargo Carrying Capacity	3,000	3,000	3,000	3,000	3,000	3,000	3,000	3,000	3,000	3,000	3,000	3,003
OVERALL LENGTH	35' 9"	36' 9"	38' 1"	37' 8"	40' 0"	TBD	42' 7"	42' 7"	42' 7"	42' 7"	42' 5"	42' 7"
EXT. HEIGHT (w/o 2nd AC)	12' 6"	12' 6"	12' 6"	12' 6"	12' 6"	12' 6"	12' 6"	12' 6"	12' 6"	12' 6"	12' 6"	12' 6"
EXT. WIDTH	101"	101"	101"	101"	101"	101"	101"	101"	101"	101"	101"	101"
FRESH WATER (gal.)	64 gal	64 gal	64 gal	64 gal	64 gal	64 gal	64 gal	64 gal	64 gal	64 gal	64 gal	64 gal
GREY WATER (gal.)	71 gal	71 gal	78 gal	78 gal	71 gal	71 gal	71 gal	89 gal	78 gal	78 gal	94 gal	89 gal
BLACK WATER (gal.)	39 gal	39 gal	39 gal	39 gal	39 gal	39 gal	39 gal	39 gal	78 gal	39 gal	78 gal	39 gal
AWNING SIZE	16'	16'	16'	16'	18' & 11'	TBD	20'	21'	11' & 12'	12' & 17'	21'	19'

TOWABLES DEFINITIONS

GVWR (Gross Vehicle Weight Rating) - is the maximum permissible weight of the unit when fully loaded. It includes all weights, inclusive of all fluids, cargo, optional equipment and accessories. For safety and product performance do NOT exceed the GVWR.

GAWR (Gross Axle Weight Rating) - is the maximum permissible weight, including cargo, fluids, optional equipment and accessories that can be safely supported by a combination of all axles.

UVW (Unloaded Vehicle Weight)* - is the typical weight of the unit as manufactured at the factory. It includes all weight at the unit's axle(s) and tongue or pin and LP Gas. The UVW does not include cargo, fresh potable water, additional optional equipment or dealer installed accessories. *Estimated Average based on standard build optional equipment.

CCC (Cargo Carrying Capacity)** - is the amount of weight available for fresh potable water, cargo, additional optional equipment and accessories. CCC is equal to GVWR minus UVW. Available CCC should accommodate fresh potable water (8.3 lbs per gallon). Before filling the fresh water tank, empty the black and gray tanks to provide for more cargo capacity. **Estimated average based on standard build optional equipment.

Each Forest River RV is weighed at the manufacturing facility prior to shipping. A label identifying the unloaded vehicle weight of the actual unit and the cargo carrying capacity is applied to every Forest River RV prior to leaving our facilities. The load capacity of your unit is designated by weight, not by volume, so you cannot necessarily use all available space when loading your unit.



PRE-DELIVERY INSPECTION FACILITY

20,000 square feet of quality assurance. The bare essentials for a premium product. This state-of-the-art facility gives immediate daily feedback to production for the quality assurance in every unit built.

24/7 EMERGENCY ROADSIDE ASSISTANCE

For a worry-free ownership experience

Forest River includes one year of Coach-Net RV Technical & Roadside Assistance with each RV purchase. Whether new to the RV lifestyle or an experienced RV enthusiast, Forest River owners have 24/7 access to technical, operational and emergency road service coverage throughout the US & Canada. Coach-Net's fast, dependable service is just a phone call away.

Coach-Net®

RV Technical & Roadside Assistance



Forest River, Inc. encourages our customers to purchase their Forest River products from a local dealership whenever possible for the following reasons:

- 1) Forest River, Inc. dealers are independently owned and operated businesses so priority service and scheduling is at their discretion and is often provided to customers that purchased their unit at that dealership.
- 2) Purchasing locally allows customers to establish meaningful relationships with a dealer, enhancing the RV experience through assistance with product questions, user tips or RV regulations for your state or country, and much more!
- 3) Canadian customers must meet requirements to bring an RV purchased out of the country to their home. These requirements may involve additional inspections and certifications, taxes and fees. Your local Canadian Dealer is a professional at meeting these requirements.
- 4) Scheduling timely warranty repairs and adjustments through a local dealership provides far greater flexibility and convenience to you, the customer!

It is the goal of Forest River, Inc. that all of our RV owners fully enjoy the RV experience and that customer satisfaction meets or exceeds their expectations!

FREE MEMBERSHIP
to Forest River Owners' Group

www.forestriverfrog.com



Learn More
Scan this barcode using a QR Reader on your smart phone to learn more about Forest River.



A Berkshire Hathaway company.

PALOMINO

COLUMBUS BY PALOMINO
A Division Of Forest River, Inc.
105-1/2 C.R. 14 • Middlebury, In 46540
www.palominoRV.com

All information contained in this brochure is believed to be accurate at the time of publication. However, during the model year, it may be necessary to make revisions and Forest River, Inc., reserves the right to make all such changes without notice, including prices, colors, materials, equipment and specifications as well as the addition of new models and the discontinuance of models shown in this brochure. Therefore, please consult with your Forest River, Inc., dealer and confirm the existence of any materials, design or specifications that are material to your purchase decision. ©2016 Palomino RV. A division of Forest River, Inc., Berkshire Hathaway Company. 11/16 Columbus

2017 COLUMBUS 5TH WHEELS BY PALOMINO

	CMF295RL	CMF298RL	CMF320RS	CMF340RK	CMF366RL	CMF374BH	CMF377MB	CMF381FL	CMF383FB	CMF384RD	CMF385BH	CMF386FK
HITCH WEIGHT	2,142	2,132	2,167	2,138	2,473	TBD	2,378	2,369	2,632	2,490	2,170	2619
UVW Unloaded Vehicle Weight	10,667	10,576	10,744	11,566	11,878	TBD	13,006	12,781	13,164	12,617	13,103	12843
GVWR Gross Vehicle Weight Rating	13,667	13,576	13,744	14,566	14,878	TBD	16,006	15,781	16,164	15,617	16,103	15846
CCC Cargo Carrying Capacity	3,000	3,000	3,000	3,000	3,000	3,000	3,000	3,000	3,000	3,000	3,000	3,003
OVERALL LENGTH	35' 9"	36' 9"	38' 1"	37' 8"	40' 0"	TBD	42' 7"	42' 7"	42' 7"	42' 7"	42' 5"	42' 7"
EXT. HEIGHT (w/o 2nd AC)	12' 6"	12' 6"	12' 6"	12' 6"	12' 6"	12' 6"	12' 6"	12' 6"	12' 6"	12' 6"	12' 6"	12' 6"
EXT. WIDTH	101"	101"	101"	101"	101"	101"	101"	101"	101"	101"	101"	101"
FRESH WATER (gal.)	64 gal	64 gal	64 gal	64 gal	64 gal	64 gal	64 gal	64 gal	64 gal	64 gal	64 gal	64 gal
GREY WATER (gal.)	71 gal	71 gal	78 gal	78 gal	71 gal	71 gal	71 gal	89 gal	78 gal	78 gal	94 gal	89 gal
BLACK WATER (gal.)	39 gal	39 gal	39 gal	39 gal	39 gal	39 gal	39 gal	39 gal	78 gal	39 gal	78 gal	39 gal
AWNING SIZE	16'	16'	16'	16'	18' & 11'	TBD	20'	21'	11' & 12'	12' & 17'	21'	19'

TOWABLES DEFINITIONS

GVWR (Gross Vehicle Weight Rating) – is the maximum permissible weight of the unit when fully loaded. It includes all weights, inclusive of all fluids, cargo, optional equipment and accessories. For safety and product performance do NOT exceed the GVWR.

GAWR (Gross Axle Weight Rating) – is the maximum permissible weight, including cargo, fluids, optional equipment and accessories that can be safely supported by a combination of all axles.

UVW (Unloaded Vehicle Weight)* – is the typical weight of the unit as manufactured at the factory. It includes all weight at the unit's axle(s) and tongue or pin and LP Gas. The UVW does not include cargo, fresh potable water, additional optional equipment or dealer installed accessories. *Estimated Average based on standard build optional equipment.

CCC (Cargo Carrying Capacity)** – is the amount of weight available for fresh potable water, cargo, additional optional equipment and accessories. CCC is equal to GVWR minus UVW. Available CCC should accommodate fresh potable water (8.3 lbs per gallon). Before filling the fresh water tank, empty the black and gray tanks to provide for more cargo capacity. **Estimated average based on standard build optional equipment.

Each Forest River RV is weighed at the manufacturing facility prior to shipping. A label identifying the unloaded vehicle weight of the actual unit and the cargo carrying capacity is applied to every Forest River RV prior to leaving our facilities. The load capacity of your unit is designated by weight, not by volume, so you cannot necessarily use all available space when loading your unit.



PRE-DELIVERY INSPECTION FACILITY

20,000 square feet of quality assurance. The bare essentials for a premium product. This state-of-the-art facility gives immediate daily feedback to production for the quality assurance in every unit built.

24/7 EMERGENCY ROADSIDE ASSISTANCE

For a worry-free ownership experience

Forest River includes one year of Coach-Net RV Technical & Roadside Assistance with each RV purchase. Whether new to the RV lifestyle or an experienced RV enthusiast, Forest River owners have 24/7 access to technical, operational and emergency road service coverage throughout the US & Canada. Coach-Net's fast, dependable service is just a phone call away.

Coach-Net®
RV Technical & Roadside Assistance



Forest River, Inc. encourages our customers to purchase their Forest River products from a local dealership whenever possible for the following reasons:

- 1) Forest River, Inc. dealers are independently owned and operated businesses so priority service and scheduling is at their discretion and is often provided to customers that purchased their unit at that dealership.
- 2) Purchasing locally allows customers to establish meaningful relationships with a dealer, enhancing the RV experience through assistance with product questions, user tips or RV regulations for your state or country, and much more!
- 3) Canadian customers must meet requirements to bring an RV purchased out of the country to their home. These requirements may involve additional inspections and certifications, taxes and fees. Your local Canadian Dealer is a professional at meeting these requirements.
- 4) Scheduling timely warranty repairs and adjustments through a local dealership provides far greater flexibility and convenience to you, the customer!

It is the goal of Forest River, Inc. that all of our RV owners fully enjoy the RV experience and that customer satisfaction meets or exceeds their expectations!

FREE MEMBERSHIP
to Forest River Owners' Group

www.forestriverfrog.com



Learn More
Scan this barcode using a QR Reader on your smart phone to learn more about Forest River.



A Berkshire Hathaway company.

PALOMINO

COLUMBUS BY PALOMINO

A Division Of Forest River, Inc.

105-1/2 C.R. 14 • Middlebury, In 46540

www.palominorv.com

All information contained in this brochure is believed to be accurate at the time of publication. However, during the model year, it may be necessary to make revisions and Forest River, Inc., reserves the right to make all such changes without notice, including prices, colors, materials, equipment and specifications as well as the addition of new models and the discontinuance of models shown in this brochure. Therefore, please consult with your Forest River, Inc., dealer and confirm the existence of any materials, design or specifications that are material to your purchase decision. ©2016 Palomino RV. A division of Forest River, Inc., Berkshire Hathaway Company. 11/16 Columbus