

CRUISER

CRUISER

& CRUISER

by **CROSSROADS**
RECREATIONAL VEHICLES

AIRE



CROSSROADS

RECREATIONAL VEHICLES





CRUISER

3 - 7

pages

Our Standard is Loaded!

The longest running product line at CrossRoads RV, Cruiser is engineered for easy towing, luxury, and the real comforts of home.



CRUISER

AIRE

8 - 11

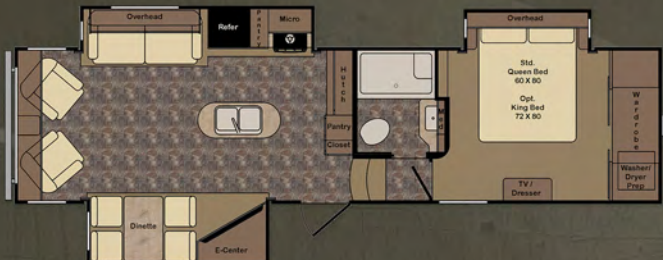
pages

Family-Friendly Affordability

Cruiser Aire is designed for your convenience. We incorporate high end features at a family-affordable price.



CF303SE



CF322RL



CF305RS



CF333RL



CF315RL



CF345BH



CF365BL



CRUISER	CF303SE	CF305RS	CF315RL	CF322RL	CF333RL	CF345BH	CF365BL
Shipping Weight	10172	9624	10084	10544	10538	10897	11658
GVWR	12304	12192	12478	12286	12132	13488	13468
Carrying Cap	2132	2568	2394	1742	1594	2591	1810
Hitch Weight	1904	1792	2078	1886	1732	2188	2368
Axle Weight	8268	7832	8006	8658	8806	8709	9290
Ext. Length*	34' 3"	33' 3"	35' 3"	37' 3"	36' 3"	37' 10"	39' 10"
Ext. Height with A/C	12' 5"	12' 8"	12' 8"	12' 8"	12' 8"	12' 8"	12' 8"
Fresh Water	56	56	56	56	56	56	56
Black Water	40	40	40	40	40	40	40
Gray	80	40	80	80	80	80	80
Tire Size	235/80R16E	235/80R16E	235/80R16E	235/80R16E	235/80R16E	235/80R16E	235/80R16E

* Exterior Length is measured from center of pin to rear bumper.



Cruiser 322RL - Latte Decor
Our most popular selling Cruiser
floorplan can be seen above.



303SE



303SE



365BL

Crossroad RV's Cruiser is engineered for easy towing, luxury and the real comforts of home. While maintaining the utmost standards you will find in the industry today, the Cruiser name has been synonymous with unique floor plans, high quality and innovation.

All Cruiser floorplans are 3/4 ton towable and range from 33 to 40 feet in length. Loaded with extras such as Roto-flex pin box, 2nd electric awning with LED light strip (most models), 2" receiver hitch, tan gel coat high gloss fiberglass, aerodynamic painted front cap, rolled roof edge, secure seal underbelly, secure slide seal system and so much more, Cruiser leaves no doubt that we produce the top-of-the-line product to meet your needs.

OUR STANDARD IS LOADED!



365BL



CROSSROADS
CRUISER



322RL



322RL



303SE



365BL

DECOR



Latte



Espresso



Cappuccino



STANDARDS EXTERIOR

- High gloss laminated sidewalls
- 5-Sided Aluma frame construction
- Aerodynamic painted front cap with LED accent lights
- One-piece seamless rubber roof covering
- Radius rolled roof edge
- Total Truss Roof System
- 30"x72" main entry door
- Lighted triple entry step
- Extendable grab handle at main entry
- EZ lube axles
- Trail air equa-flex suspension
- Trail air roto flex pin box
- 16" "E" rated nitrogen filled radial tires
- Galvanized wheel well
- Outside kitchen (VBM)
- Super-Stor pass through basement storage
- Metal slam latch pass through baggage doors
- Cable prep and electric outlet in basement
- Manual slide override extends through frame for easy access
- Dura-Cam I beam frame
- Scare light
- Exterior marine grade speakers (2)
- Dual battery capacity
- Battery disconnect
- Heated and enclosed gate valves
- ABS Enclosed underbelly
- Secure seal underbelly
- Forced heat to underbelly
- Black tank flush
- Quick recovery 10gal G/E DSI water heater (19.7 gal/hr)
- Outside shower
- Exterior utility center
- 50amp detachable power service
- 2nd AC prep
- Cable/SAT prep
- Digital TV antenna
- Electric rear jacks
- Outside grill prep
- Roof ladder

STANDARD INTERIOR

- Lumber core screwed stile cabinetry construction
- Raised panel cabinetry throughout
- 70-lb steel ball bearing guides, full extension
- Solid wood drawer construction
- Hardwood mullion style fridge front
- Extendable free standing table and chairs
- Self igniting 22" oven with 3-burner cook top

- Range cover
- Knife rack
- Adjustable pantry shelving (VBM)
- High rise pull out kitchen faucet
- Under mount stainless steel kitchen sink w/sink cover
- Maximum lino (Beauflor wood grain)
- Tri-Fold hide a bed sofa
- Swivel rocker recliner chairs (VBM)
- Deluxe theater seating (VBM)
- Ceiling fan
- Fireplace w/remot
- Slide out sidewall light (VBM)
- OHC above sofa/chairs in slide out
- Decorative slide fascias
- Water heater by-pass kit
- EZ winterization kit
- Charging station
- Backlit command center for switches
- 65amp converter with distribution center
- Bath skylight
- Built medicine cabinet
- Glass tub/shower enclosure
- Deluxe bedding package
- Full trunk under bed storage
- Plywood bed base with strut assist
- Spacious bedroom closets
- Washer/dryer prep (VBM)
- Fire extinguisher
- LP/CO2 detector
- Smoke detector

SELECT PACKAGE MANDATORY

- 8cu ft refer
- 12v Multi-media sound system w/Bluetooth
- Toy Lok
- Black Label furniture
- Deluxe soft pull roller night shades
- Dark tinted safety glass windows
- Glazed maple cabinetry
- Interior safety step light
- Interior grab handle
- Dual 30# lp tanks w/auto changeover
- Porcelain toilet with foot flush
- 32" - 48" LED TV in living area (VBM)
- Microwave
- 35,000 btu furnace
- 10 gal quick recovery water heater
- 15,000 BTU ducted air system with quick cool
- Spare tire
- Solid surface kitchen countertops
- Polartec insulation package
- Aluminum rims
- Vetro High gloss sidewalls
- Electric awning with LED light
- Trail Air Roto-flex pin box
- Equa flex suspension

- Rear hitch receiver
- 2nd power awning with LED lights (VBM)
- Maxx Air fan w/rain sensor in kitchen
- Correct track alignment system
- I-Cool mattress (60"x80")
- LED lights throughout interior
- LED strip light behind main TV and in outside kitchens
- 8 Function remote control
- 7" Deep sink w/ high rise pull out faucet
- Luxury backsplash

OPTIONS

- Bumper mount grill
- Insulated windows
- Painted rear fiberglass cap
- Painted exterior (requires painted rear cap)
- 2nd AC (lo-profile 13.5)
- Maxx Air Fan w/ rain sensor in bathroom
- King bed IPO Queen (322RL & 303SE)
- Free standing table and chairs with recliner (345BH)
- Theater seats ipo Recliners (VBM)
- Carpet in living area
- 32" TV with bracket in bedroom
- Ground control 3.0 electric auto leveling system
- 18 cubic ft French door Residential refer (VBM)

POLARTEC COMPONENTS

- Sidewall - Block foam insulation + double layer luan
- Roof - Wood rafters + R-14 spun insulation + R-15 radiant foil
- Floor system - R-14 spun insulation + R-15 radiant foil + ABS enclosure
- Front wall - R-7 spun insulation + R-15 radiant foil
- Rear wall - R-7 spun insulation + R-15 radiant foil
- Slide floor - R-15 radiant foil insulation
- Slide end walls - R-7 spun insulation + R-15 radiant foil
- Bedroom deck - R-7 spun insulation + R-15 radiant foil
- Above open pin box - R-15 radiant foil
- Gate valves - Enclosed and heated
- Underbelly - Forced heat to tanks
- 35,000 BTU Furnace - Largest in its class

TOTAL TRUSS ROOF SYSTEM

- 50% stronger than competitive roof designs
- 4 1/2" crowned wood truss 16" On Center
- 2"x2" vertical wood stud supports to maximize load capacity
- Oversized nail plates for greater stability
- 3/8" roof decking (secured in place with screws)
- Radius roof edge
- Fully walkable

CRUISER

AIRE



Cruiser Aire 28SE - Latte Decor
Above is the main living and kitchen area
in our best selling Cruiser Aire floorplan.



29RS



25SE



25SE

The Cruiser Aire combines affordability, towability and high quality. Although the Cruiser Aire was designed solely as a super-light-weight brand for Crossroads RV, we manufacture floor plans of ALL sizes that are well-constructed and affordable!

With convenience at the top of our list, we incorporate high-end features such as high-gloss fiberglass, slam latch pass-through baggage doors with magnetic catches, electric awnings with LED light strip, Total Truss Roof System with 3/8" walkable roof decking, secure seal underbelly and so much more to make the exterior suitable for all of your needs.

Inside the unit you will find the same standards of convenience such as a 35,000 BTU furnace, 17.8 GPH water heater, 7" deep stainless steel sink with high rise faucet and so much more.

FAMILY - FRIENDLY AFFORDABILITY



28SE



CROSSROADS
AIR

DECOR OPTIONS



Latte



Espresso



Cappuccino



31BH



25SE



25SE



31BH



29RS



29RS



25SE



31BH

CAF25SE



CAF27RL



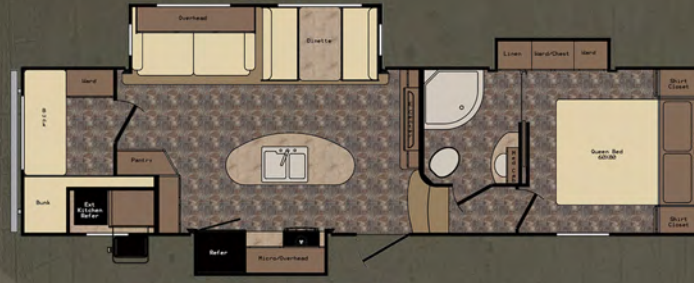
CAF28SE



CAF32BH



CAF29BH



CAF29RS



CAF31BH



CRUISER AIRE	CAF25SE	CAF27RL	CAF28SE	CAF29BH	CAF29RS	CAF31BH	CAF32BH
Shipping Weight	7942	7819	8431	8945	8987	9919	9616
GVWR	9920	9920	9920	11986	11988	12228	TBD
Carrying Cap	1978	2101	1489	3041	3001	2309	TBD
Hitch Weight	1636	1214	1580	1826	1828	2068	TBD
Axle Weight	6306	6605	6851	7119	7159	7851	TBD
Ext. Length	28' 5"	29' 11"	30' 11"	32' 11"	32' 11"	36' 0"	35' 11"
Ext. Height with A/C	12' 0"	12' 0"	11' 10"	11' 10"	12' 3"	12' 4"	12' 5"
Fresh Water	56	56	56	56	56	56	56
Black Water	40	40	40	40	40	80	80
Gray	40	40	40	40	40	80	80
Tire Size	225/75R15D	225/75R15D	225/75R15D	225/75R15D	225/75R15D	225/75R15D	225/75R15D

* Exterior Length is measured from center of pin to rear bumper.

CRUISER

AIRE

CrossRoads RV offers a two year limited warranty on all products from the date of purchase. This applies to units sold in the United States and Canada by authorized CrossRoads Dealers.



CrossRoads®

RECREATIONAL VEHICLES

www.crossroadsrv.com

1140 W. Lake St
Topeka, IN 46571

STANDARDS EXTERIOR

- High gloss laminated sidewalls
- Total truss roof system
- Aluma frame construction (sidewalls, front wall & floor)
- Aerodynamic front cap
- One-piece seamless rubber roof covering
- Radius rolled roof edge
- Total Truss roof system
- 30"x72" main entry door
- Triple entry step
- Extendable grab handle at main entry
- EZ lube axles
- Nitrogen filled radial tires
- Galvanized wheel well
- Outside kitchen with LED light (VBM)
- Super-stor pass through basement storage
- Metal slam latch pass through baggage doors
- Manual slide override extends through frame for easy access
- Dura-Cam I beam frame
- Exterior marine grade speakers (2)
- Secure seal heated underbelly
- Black tank flush
- Quick recovery 6 gal G/E DSI water heater (17.8 gal/hr)
- Outside shower
- 30 amp detachable power service
- Cable/SAT prep
- Digital TV antenna
- Stabilizer jacks
- Outside grill prep

STANDARD INTERIOR

- Lumber core screwed stile cabinetry construction
- 70lb steel ball bearing guides, full extension
- Solid wood drawer construction
- Decorative dinette light
- 40" booth dinette (VBM)
- U-dinette with snap up table (VBM)
- Chair rail in dining room slide
- Plywood dinette base
- Self igniting 22" oven with 3-burner cook top
- Pantry (Most models)
- High definition laminate countertops
- High rise kitchen faucet
- 7" deep Stainless steel kitchen sink with cover
- Maximum lino (Beauflor)
- Tri-fold hide a bed sofa
- Swivel rocker chairs (VBM)
- Over head cabinet above sofa / chairs in slide out
- Decorative slide fascias
- Water heater by-pass kit
- EZ winterization kit
- 55 amp converter with distribution center

- 12-volt bath power vent
- Bath skylight
- Built medicine cabinet
- Glass shower enclosure
- Deluxe bedding package
- Full trunk under bed storage
- Plywood bed board with strut assist
- Spacious bedroom closets
- Fire extinguisher
- LP/CO2 detector
- Smoke detector

TOUR PACKAGE MANDATORY

- Bluetooth radio
- Aluminum Frame Construction
- Black Label furniture
- 2 drawers in bed base
- Dark tinted safety glass windows
- Glazed maple cabinetry
- Dual 30# LP tanks w/auto changeover
- Porcelain toilet with foot flush
- Microwave
- 35,000 BTU furnace
- 13,500 BTU ducted air system with quick cool
- Spare tire
- Aluminum rims
- Vetro High gloss sidewalls
- Electric awning with LED light
- 60" x 80" innerspring mattress
- Metal slam latch pass through baggage doors
- 2 exterior speakers
- LED strip light in outside kitchens (VBM)
- 17.8 GPH GSI water heater
- Large swing handle at entry door
- Max Lino (Beauflor)
- Black tank flush
- Outside shower
- 7" deep stainless steel sink
- Thick Crown molding

TOTAL TRUSS ROOF SYSTEM

- 50% stronger than competitive roof designs
- 4 1/2" crowned wood truss 16" on center
- 2"x2" vertical wood stud supports to maximize load capacity
- Oversized nail plates/greater stability
- 3/8" roof decking (secured in place with screws)
- Radius roof line
- Fully walkable

OPTIONS

- Premium Package
- Roof ladder (included in premium package)
- 15K A/C IPO 13.5K (included in premium package)
- 32" TV in living area

- (included in premium package)
- 8 cu ft refer ipo 6 cu ft (included in premium package)
- Bumper mount grill
- Insulated windows
- 50 amp service with 2nd A/C prep
- 2nd A/C (low-profile 13.5) requires 50 amp option
- Recliners IPO swivel rockers (VBM)
- Free standing table and chairs
- Solid surface counter tops
- Fireplace – Requires 50 amp option
- CSA

PREMIUM PACKAGE OPTIONAL

- 5-sided aluma frame construction
- Painted Aerodynamic front cap w/ LED accent light
- Lighted triple entry step
- Trail Air Equa-Flex suspension
- Battery disconnect switch
- Roof ladder
- LED lights throughout interior
- Raised panel cabinetry
- Luxury Décor glass
- Decorative back splash
- Range cover
- Knife rack
- 12 volt charging station
- Slide out sidewall light (VBM)
- Backlit command center for switches
- 8 cu ft refer w/ Mullion design wood panel
- Deluxe soft pull roller night shades
- Curtains
- 32" TV in living area
- 15,000 BTU ducted air system with quick cool
- *Thermotec insulation package
- Correct track alignment system
- I-Cool mattress (60"x80")
- Rear hitch receiver
- Electric rear jacks
- Spring loaded pull pins on front power jacks
- 12-volt multi-media sound system w/Bluetooth

THERMOTEC COMPONENTS

(In Premium Package)

- Sidewall - Block Foam Insulation + Single Layer Luan
- Roof - Wood Rafters + R-7 Spun Insulation + R-15 radiant foil
- Floor System - R-7 Spun Insulation + R-15 radiant foil + ABS Enclosure
- Front Wall - R-7 Spun Insulation + R-15 radiant foil
- Rear Wall - R-7 Spun Insulation + R-15 radiant foil
- Slide Floor - R-15 Radiant foil Insulation
- Slide End Walls - R-7 Spun Insulation + R-15 radiant foil
- Slide Roof - R-7 Spun Insulation + R-15 radiant foil
- Bedroom Deck - R-7 Spun Insulation + R-15 radiant foil
- Above Open Pin Box - R-15 radiant foil
- ABS enclosed secure seal heated underbelly
- Furnace - 35,000 BTU (Largest in its class)

Revised 1/16

*DISCLAIMER: Product Information is as accurate as possible at the date of publication of this brochure. All features, floorplans, and specification in this brochure are subject to change without notice. Please also consult CrossRoads RV's website at www.crossroadsrv.com for more current product information and specifications. Tow Vehicle Disclaimer. CAUTION: Owners of CrossRoads recreational vehicles are solely responsible for the selection and proper use of tow vehicles. All customers should consult with a motor vehicle manufacturer or their dealer concerning the purchase and use of suitable tow vehicles for CrossRoads RV products. CrossRoads RV disclaims any liability or damages suffered as a result of the selection, operation, use or misuse of tow vehicle. CROSSROADS RV'S LIMITED WARRANTY DOES NOT COVER DAMAGE TO THE RECREATIONAL VEHICLE OR TOW VEHICLE AS A RESULT OF THE SELECTION, OPERATION, USE OR MISUSE OF THE TOW VEHICLE.