

# CATALINA

DESTINATION









39FKTS BACK TO FRONT VIEW



39FKTS KITCHEN STORAGE

# FREE Destination Edition Package

FREE



A

FREE



B

FREE



C

FREE



D

FREE



E

- A - 15,000 BTU DUCTED A/C
- B - TRI FOLD HIDE A BED SOFA
- C - 10 GALLON G/E DSI WATER HEATER
- D - 32" FLAT SCREEN LED TV AND SWING-ARM BRACKET
- E - UNDER MOUNT DUAL DEEP BASIN KITCHEN SINK W/ SINK COVERS
- F - BLUETOOTH STEREO W/CD,DVD, MP3, SD, USB AND AM/FM RADIO
- G - GLASS STEP-IN SHOWER W/ ABS SURROUND
- H - MOSAIC TILE BACKSPLASH
- I - STAINLESS STEEL LIGHTED VENT HOOD
- J - FLUSH MOUNT STAINLESS STEEL 3 BURNER RANGE WITH BI-FOLD GLASS RANGE TOP
- K - STAINLESS STEEL OVEN
- L - STAINLESS STEEL DIGITAL MICROWAVE
- M - LIVING ROOM & MASTER BEDROOM CEILING FANS W/ WALL SWITCH
- N - SERTA SLEEP SYSTEM MATTRESS
- O - SPORT WHEEL PACKAGE (SILVER E-COAT SPORT WHEELS WITH CHROME HUBS AND LUGS)
- P - KITCHEN BAR STOOLS
- Q - BLACK TANK FLUSH
- R - OUTSIDE MARINE GRADE SPEAKERS (2)

FREE



F

FREE



G

FREE



H

FREE



I

FREE



J

FREE



K

FREE



L

FREE



M

FREE



N

FREE



O

FREE



P

FREE



Q

FREE



R



## FREE DESTINATION EDITION PACKAGE

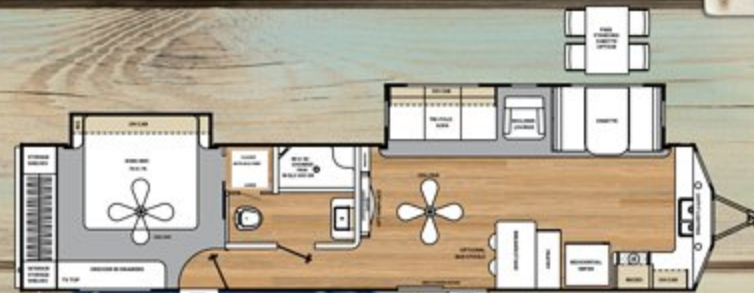
Catalina would like to reward our outstanding Dealers and Customers for their continued business! There is no better way to reward you than with the Destination Edition Package! All of our best options have been combined into a FREE Destination Edition Package. At Coachmen Catalina, we overtly express our gratitude to those who have already become a part of the Coachmen Family and warmly welcome those future campers that choose Coachmen Products. Thank you for your business!

# Floorplans

Featuring  
L A Z B O Y  
Recliners  
Standard



39FKTS



40FKDS



39MKTS



40TSHB



39RLTS



40BHTS

## CATALINA DESTINATION SPECIFICATIONS

| MODEL                       | 39FKTS   | 39MKTS   | 39RLTS   | 40BHTS   | 40FKDS   | 40TSHB   |
|-----------------------------|----------|----------|----------|----------|----------|----------|
| UVW                         | 9,540    | 9,410    | 9,762    | 9,610    | 9,062    | 9,680    |
| Carrying Capacity           | 1,460    | 1,590    | 1,238    | 1,330    | 1,938    | 1,260    |
| GVWR                        | 11,000   | 11,000   | 11,000   | 11,000   | 11,000   | 11,000   |
| Hitch Weight                | 1,110    | 1,330    | 1,494    | 1,130    | 1,138    | 1,190    |
| Exterior Height (with A/C)  | 11'8"    | 11'8"    | 11'8"    | 11'8"    | 11'8"    | 11'8"    |
| Fresh Water Capacity (gal.) | 46       | 46       | 46       | 46       | 46       | 46       |
| Grey Water Capacity (gal.)  | 80       | 80       | 80       | 80***    | 80       | 80       |
| Waste Water Capacity (gal.) | 40       | 30       | 30       | 40       | 30       | 70       |
| Awning Length               | 21'      | 15'      | 18'      | 21'      | 21'      | 21'      |
| Wheel Size                  | 15"      | 15"      | 15"      | 15"      | 15"      | 15"      |
| Exterior Length             | 40'9"    | 40'9"    | 40'9"    | 40'9"    | 40'9"    | 40'9"    |
| Exterior Width              | 96"      | 96"      | 96"      | 96"      | 96"      | 96"      |
| Interior Height (Coach)     | 84"      | 84"      | 84"      | 84"      | 84"      | 84"      |
| Axles                       | 5200 LBS | 5200 LBS | 5200 LBS | 5200 LBS | 5200 LBS | 5200 LBS |

Please see back cover for more information regarding weights.

# STANDARDS AND OPTIONAL FEATURES

## STANDARD EXTERIOR FEATURES

- Cambered structural steel I-beam frame
- 3/8" Fully decked walk-on roof
- 2" X 3" longitudinal floor joists on approximately 12" centers
- Residential in-floor ducted heat
- 84" Ceiling height destination trailers
- One-piece, seamless, rubber roof material with 12 year warranty
- Easy-Trac electric slide out(s)
- Wall studs on 16" centers
- 1/2" Plywood dinette, bed and bunk platforms
- Roof rafters, constructed of residential-style tapered 5" trusses
- 5/8" Tongue & groove plywood floor decking
- R-7 fiberglass insulation in sidewall, roof & floor
- .024" Aluminum exterior skin with .030 Skirt metal
- Dark tinted (G-20) black framed windows w/ safety glass
- Oversize Swing arm entry assist handle at main entry
- Radius entry steps
- Superlube™ easy maintenance axles
- Painted bumper w/drain hose carrier and end caps
- Radius-cornered fiberglass entrance door
- Painted bottom radius skirting
- Amber patio light w/inside switch
- Baggage doors are lockable and radius-cornered
- Grab handle at second entry (per floorplan)
- Rain guttering, molded w/drip spouts
- Polished aluminum fender skirts
- Large bay front windows
- Stabilizer jacks (4)
- TV antenna w/cable interior/exterior hook-ups

## STANDARD INTERIOR FEATURES

- Grace Cherry interior wood
- Congoleum woodplank linoleum flooring
- La-Z-Boy® Recliners (per floorplan)
- Residential furniture
- TV antenna with signal booster
- Cable hook-up with RG-6 coax cabling
- Valance and decorative curtains
- Solid doors throughout all units
- Large dinette tabletop
- Night shades in living area and bedroom
- Single piece thermofoil countertop with Waterfall edge
- Full sized residential refrigerator
- 3-Burner range w/ 9,000 BTU superburner™
- Convenient breakfast bar in all models
- Kitchen drawers with full extension metal ball bearing drawer guides
- Easy-view extra large picture window at dinette
- Residential style lighting above dinette w/ wall sconces
- Silverware drawer
- Under-bed storage, bed lifts easily on gas struts
- Designer decorative headboard
- Skylight above bath and shower
- Shower with glass doors
- LED lighting
- Marine toilet with foot flush
- Large sink in bathroom
- Medicine cabinet w/ mirror
- Bathroom power roof vent

## Standard Heat, Water and Power Equipment

- Roto-cast holding tanks
- Washer/dryer prep (39MKTS, 39RLTS, 40FKDS)
- 35K BTU Auto-ignition furnace with wall thermostat
- 110V G.F.C.I. Protected exterior receptacle
- 50-Amp electric service
- 12V demand water pump
- Systems monitor panel
- Hook-up for city water

- Double 30-lb. propane gas bottles w/ regulator and ABS cover
- Water heater by-pass winterization kit

## FOR YOUR SAFETY

- Smoke alarm
- Fire extinguisher
- Dead-bolt lock on entry door
- LP/CO2 gas detector
- Fire escape windows

## POPULAR OPTIONS

- Heated-enclosed underbelly (N/A non-self contained option)
- Second 13.5 BTU A/C
- Remote operated power electric awning w/ LED light
- Spare tire w/tire carrier and cover
- Non-self contained (residential toilet, fresh water tank and pump, direct dump w/no black or grey tanks)
- Full size exterior camp kitchen (40BHTS only)
- Free standing dining table w/extension and chairs
- Fireplace in living room
- Detachable hitch
- State Seal (Nebraska, Oregon, Washington)
- Coach-net roadside assistance (one year - included for free!)



40BHTS OPTIONAL CAMP KITCHEN



## DESTINATION EDITION PACKAGE

- 15,000 BTU DUCTED A/C
- TRI FOLD HIDE A BED SOFA
- 10 GALLON G/E DSI WATER HEATER
- 32" FLAT SCREEN LED TV AND SWING ARM BRACKET
- UNDER MOUNT DUAL DEEP BASIN KITCHEN SINK W/ SINK COVERS
- BLUETOOTH STEREO W/ CD, DVD, MP3, SD, USB AND AM/FM RADIO
- GLASS STEP-IN SHOWER W/ ABS SURROUND
- MOSAIC TILE BACKSPASH
- STAINLESS STEEL LIGHTED VENT HOOD
- FLUSH MOUNT STAINLESS STEEL 3 BURNER RANGE WITH BI-FOLD GLASS RANGE TOP
- STAINLESS STEEL OVEN
- STAINLESS STEEL DIGITAL MICROWAVE
- LIVING ROOM & MASTER BEDROOM CEILING FANS W/ WALL SWITCH
- SERTA SLEEP SYSTEM MATTRESS
- SPORT WHEEL PACKAGE (SILVER E-COAT SPORT WHEELS WITH CHROME HUBS AND LUGS)
- KITCHEN BAR STOOLS
- BLACK TANK FLUSH
- OUTSIDE MARINE GRADE SPEAKERS (2)





# COA

COACHMEN OWNERS ASSOCIATION

## FREE MEMBERSHIP

[www.coachmenowners.com](http://www.coachmenowners.com)

CUSTOMER SATISFACTION



[www.ForestRiverBuyLocal.com](http://www.ForestRiverBuyLocal.com)



### Travel Easy™ Roadside Assistance

RVing is easier with Coachmen's Travel Easy™ Roadside Assistance provided FREE the first year of ownership to those who purchase a New Coachmen RV. Administered by Coach-Net, this service provides you with 24/7 operational, technical and emergency road service coverage. Also included is towing, fuel delivery, jump starts, lockout service, tire changes, mobile mechanic and unlimited technical assistance. Anywhere. Anytime. Travel Easy™ is the security of knowing that help is an easy phone call away.

All information contained in this brochure is believed to be accurate at the time of publication. However, during the model year, it may be necessary to make revisions and Forest River, Inc., reserves the right to make all such changes without notice, including prices, colors, materials, equipment and specifications as well as the addition of new models and the discontinuance of models shown in this brochure. Therefore, please consult with your Forest River dealer and confirm the existence of any materials, design or specifications that are material to your purchase decision.

To learn more about Coachmen RV and our products and see how Coachmen is leading the great outdoors, visit [www.coachmenrv.com](http://www.coachmenrv.com)  
Coachmen Industries 423 N. Main St., Middlebury, IN 46540  
Phone: 574-825-5821

**GVWR (Gross Vehicle Weight Rating)** - is the maximum permissible weight of the unit when fully loaded. It includes all weights, inclusive of all fluids, cargo, optional equipment and accessories. For safety and product performance do NOT exceed the GVWR.

**GAWR (Gross Axle Weight Rating)** - is the maximum permissible weight, including cargo, fluids, optional equipment and accessories that can be safely supported by a combination of all axes.

**UVW (Unloaded Vehicle Weight)\*** - is the typical weight of the unit as manufactured at the factory. It includes all weight at the unit's axle(s) and tongue or pin and LP Gas. The UVW does not include cargo, fresh potable water, additional optional equipment or dealer installed accessories.

\*Estimated Average based on standard build optional equipment.

**CCC (Cargo Carrying Capacity)\*\*** - is the amount of weight available for fresh potable water, cargo, additional optional equipment and accessories. CCC is equal to GVWR minus UVW. Available CCC should accommodate fresh potable water (8.3 lbs per gallon). Before filling the fresh water tank, empty the black and gray tanks to provide for more cargo capacity.

\*\* Estimated average based on standard build optional equipment

Each Forest River RV is weighed at the manufacturing facility prior to shipping. A label identifying the unloaded vehicle weight of the actual unit and the cargo carrying capacity is applied to every Forest River RV prior to leaving our facilities. The load capacity of your unit is designated by weight, not by volume, so you cannot necessarily use all available space when loading your unit.

# CATALINA

DESTINATION



Learn More  
Scan this barcode using a QR Reader on your smart phone to learn more about Forest River.



A Berkshire Hathaway company.



YOUR CATALINA DEALER