

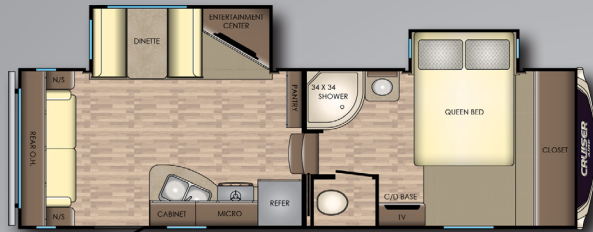
CRUISER



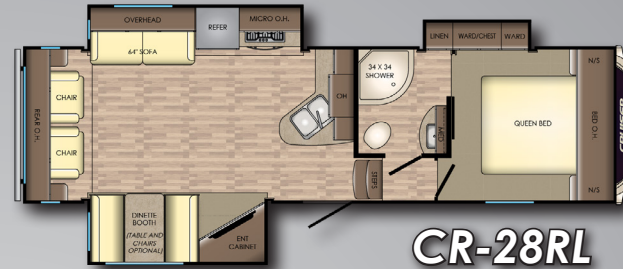
CROSSROADS
Recreational Vehicles

CRUISER

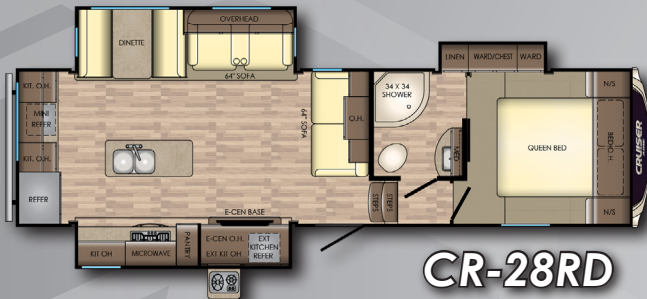
AIRE



CR-25RL



CR-28RL

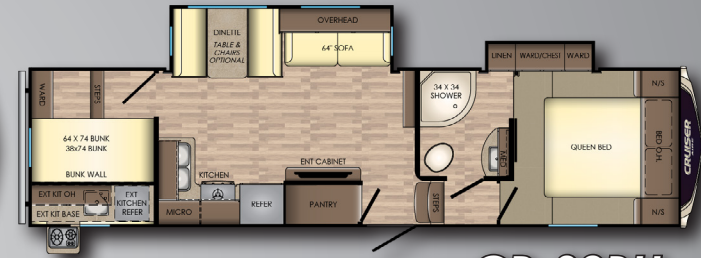


CR-28RD

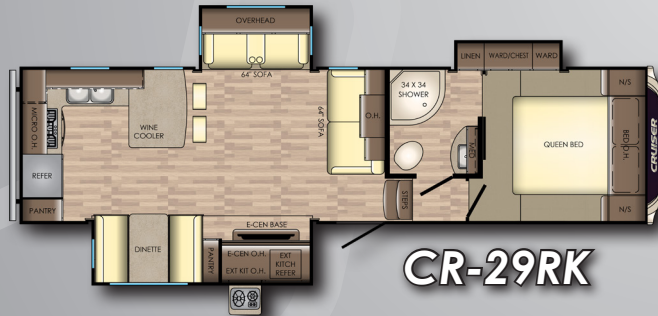
4 Point Leveling System Standard



CR-29SI

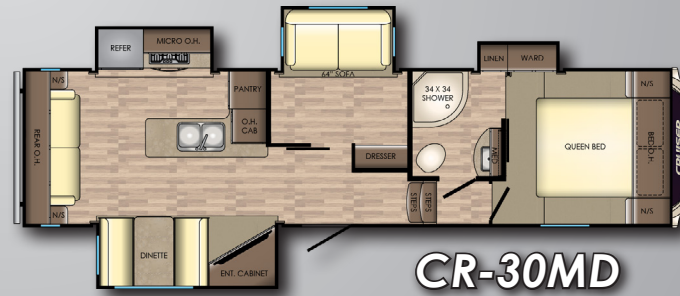


CR-29BH



CR-29RK

4 Point Leveling System Standard



CR-30MD

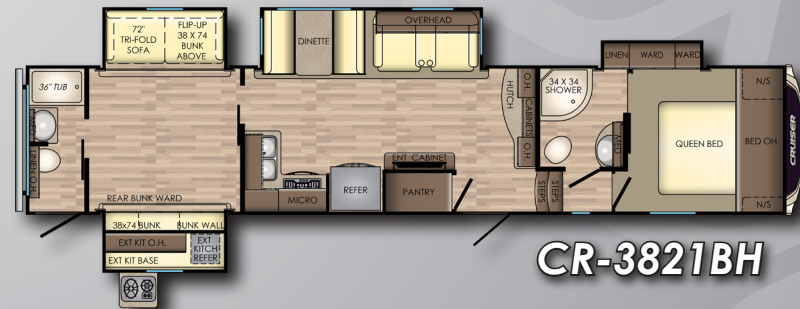
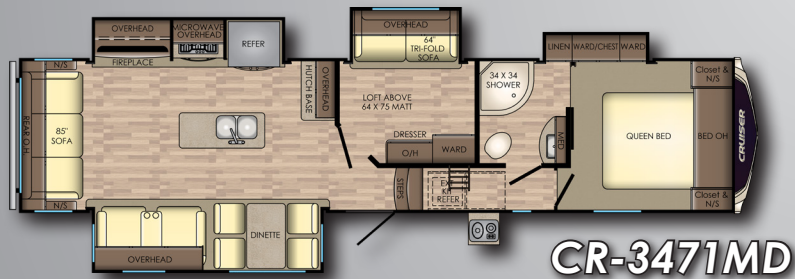
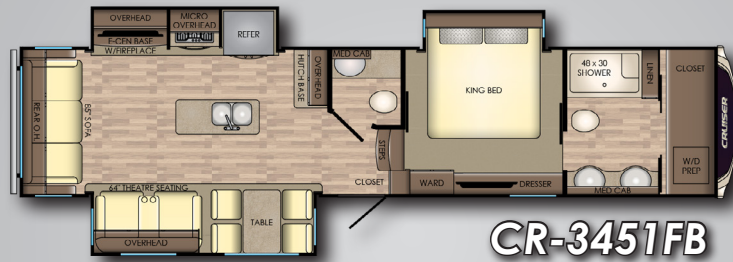
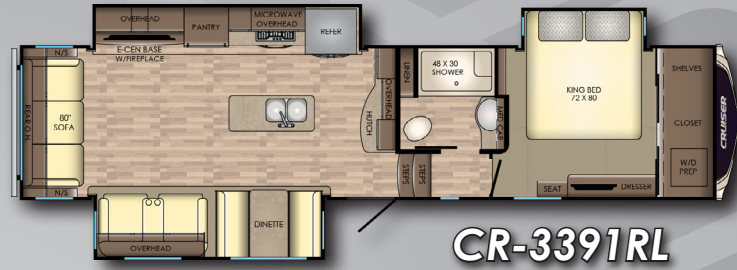
4 Point Leveling System Standard

* SEE WEBSITE FOR ADDITIONAL SPECS

MODEL	25RL	28RL	28RD	29SI	29BH	29RK	30MD	3351BH	3391RL	3451FB	3471MD	3821BH
DRY WEIGHT	7138	7980	8526	8424	8240	8512	8704	11540	10672	10928	11316	12738
HITCH	1322	1406	1479	1530	1570	1610	1480	2030	1904	1862	2028	2270
LENGTH	29' 3"	31' 6"	32' 7"	33' 3"	34' 1"	33' 3"	34' 1"	38' 9"	37' 10"	38' 9"	38' 9"	42' 7"
EXT. HEIGHT W/ A/C	12' 1"	12' 1"	12' 5"	12' 1"	12' 5"	12' 1"	12' 5"	12' 8"	12' 8"	12' 8"	12' 8"	13' 4"
FRESH WATER	60 Gal	60 Gal	60 Gal	60 Gal	60 Gal	60 Gal	60 Gal	64 Gal	64 Gal	64 Gal	64 Gal	64 Gal
BLACK WATER	44 Gal	44 Gal	44 Gal	44 Gal	44 Gal	44 Gal	44 Gal	82 Gal	42 Gal	84 Gal	42 Gal	84 Gal
GRAY WATER	44 Gal	44 Gal	88 Gal	88 Gal	88 Gal	88 Gal	88 Gal	84 Gal	84 Gal	84 Gal	82 Gal	126 Gal

CRUISER

HIGH PROFILE



STANDARDS & OPTIONS

STANDARDS EXTERIOR

- Laminated Sidewalls
- Painted Front Cap w/ Clear Shield
- Total Truss Roof System
- Aerodynamic Front Cap
- One-Piece Seamless Super Flex Roof w/ 12 Yr. Warranty
- 30" Friction Hinge Entry Door
- Extendable Grab Handle at Main Entry
- EZ Lube Axles
- Nitrogen Filled Radial Tires
- Galvanized Wheel Well
- Outside Kitchen w/ LED light (VBM)
- Super-stor Pass Through Basement Storage
- Magnetic Slam Latch Baggage Doors
- Exterior Marine Grade Speakers
- Quick Recovery 6 Gal G/E DSI Water Heater (17.8 gal/hr)
- Outside Shower
- 50 Amp Service w/ 2nd A/C Prep
- Cable/SAT Prep
- Digital TV Antenna
- Roof Ladder
- 3/8" Roof Decking (Secured in Place with Screws)
- Fully Walkable Roof
- 6 Sided Aluminum Construction
- Electric Rear Stabilizer Jacks
- Spring Loaded Pull Pins on Front Jacks
- Battery Disconnect Switch
- Dark Tinted Safety Glass Windows
- 4 Point Leveling System (28RD,29RK,30MD)

STANDARD INTERIOR

- Lumber Core Screwed Stile Cabinetry Construction
- 70lb Steel Ball Bearing Guides, Full Extension
- Solid Wood Drawer Construction
- Hardwood Maple Panel Cabinetry
- Decorative Dinette Light
- 40" Booth Dinette
- Decorative Back Splash

- 30" Microwave
- Furrion Appliances "Chef Collection"
- 7 or 8 ft³ Stainless Steel Refrigerator
- Pantry (Most models)
- Solid Surface Kitchen Countertops
- Stainless Steel Appliances
- High Rise Kitchen Faucet - Pullout
- 9" Deep Stainless Steel Kitchen Sink w/ Cover
- Maximum Lino
- Tri-fold Hide a Bed Sofa
- Over Head Cabinet in Slide Out
- Decorative Slide Fascias
- Water Heater Bypass Kit
- EZ Winterization Kit
- 55 Amp Converter w/ Distribution Center
- 12-volt Bath Power Vent
- Bath Skylight
- Built In Medicine Cabinet
- Glass Shower Enclosure
- Porcelain Toilet w/ Foot Flush
- Under Bed Storage
- Plywood Bed Base w/ Strut Assist
- Spacious Bedroom Closets
- Fire Extinguisher
- 12 Volt Charging Station
- Spare Tire - Undermount
- Thomas Payne Power Theater Seats

OPTIONS

- 39" LED TV
- 15K A/C IPO 13.5K
- 2nd A/C in Bedroom
- 5100 BTU Fireplace
- Free Standing Table & Chairs

SELECT PACKAGE MANDATORY

- Aluminum Wheels
- Black Tank Flush
- Power Awning w/ LED Lights
- Friction Hinge Entrance Doors
- Wood Blinds
- 60x80 Queen Mattress

- LED Interior Lights
- Smoke Detector
- LP Detector
- 13,500 BTU A/C
- Decorative Bedspread
- 30# LP Bottles
- AM/FM/DVD/CD Stereo w/ Bluetooth
- Backup Camera Prep
- Solar Prep
- Secure Stance Steps
- Flip Up Bike Rack

"EXTREME WEATHER PACKAGE"

- Upgrade Insulation
- Heat Barrier - Reflective Foil
- Enclosed & Heated Underbelly
- Furnace - 30,000 BTU

CRUISER HP UPGRADES

- 50" LED HDTV
- Furrion Appliances "Chef Collection"
- 18 ft³ Residential Refer or 12 ft³ Gas/Elec.
- 4/6 Point Leveling System
- 16" Aluminum Wheels
- Raised Panel Cabinet Doors
- Theater Seating "Power"
- Upgraded Mattress - (i-Cool)
- 15,000 BTU A/C
- 35,000 BTU Furnace
- Flip Up Bike Rack
- 6,000 lb. Axles
- 50 Amp Service
- 5 Sided Aluminum Construction
- Roller Shades
- Wood Window Trim

*VBM - Varies by Model

DECORS



OAK HILL



PINE VALLEY

OUR STANDARD IS LOADED

www.crossroadsrv.com • 1140 W. Lake St Topeka, IN 46571 • (260) 593 - 3850

DISCLAIMER: Product information is as accurate as possible as of the date of publication of this brochure. All features, floor plans, and specifications in this brochure are subject to change without notice. Please also consult CrossRoads' web site at www.crossroadsrv.com for more current product information and specifications. Tow Vehicle Disclaimer. CAUTION: Owners of CrossRoads recreational vehicles are solely responsible for the selection and proper use of tow vehicles. All customers should consult with a motor vehicle manufacturer or their dealer concerning the purchase and use of suitable tow vehicles for CrossRoads products. CrossRoads disclaims any liability or damages suffered as a result of the selection, operation, use or misuse of a tow vehicle. CROSSROADS' LIMITED WARRANTY DOES NOT COVER DAMAGE TO THE RECREATIONAL VEHICLE OR THE TOW VEHICLE AS A RESULT OF THE SELECTION, OPERATION, USE OR MISUSE OF THE TOW VEHICLE. REFERENCE CROSSROADS RV COMPANY OWNERS MANUAL FOR LIMITED WARRANTY DETAILS. *Length is defined as the distance from the centerline of hitch pin/coupler to rear bumper of trailer.

