

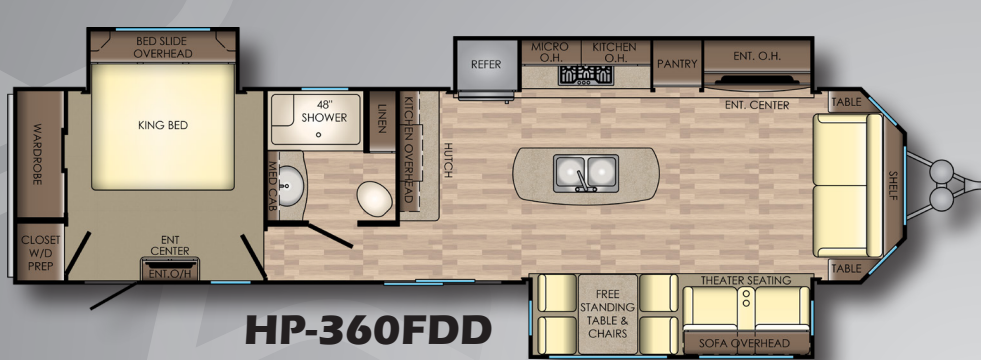
HAMPTON



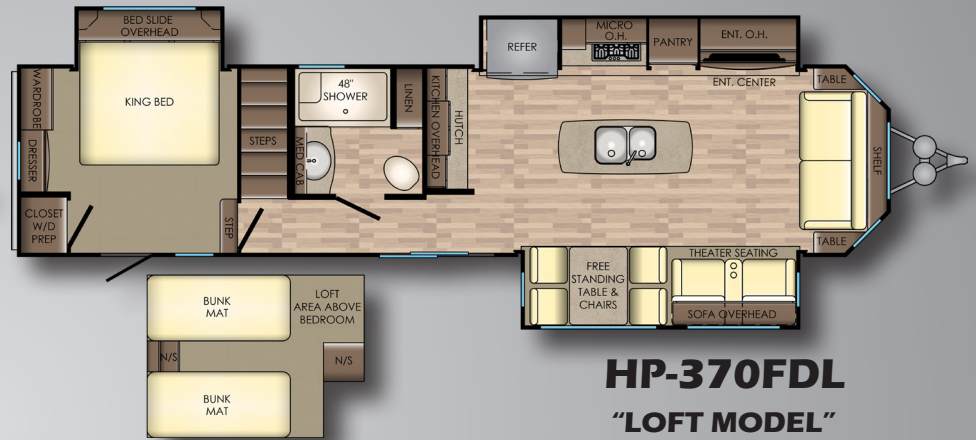
CROSSROADS
Recreational Vehicles

Floorplans and Specs

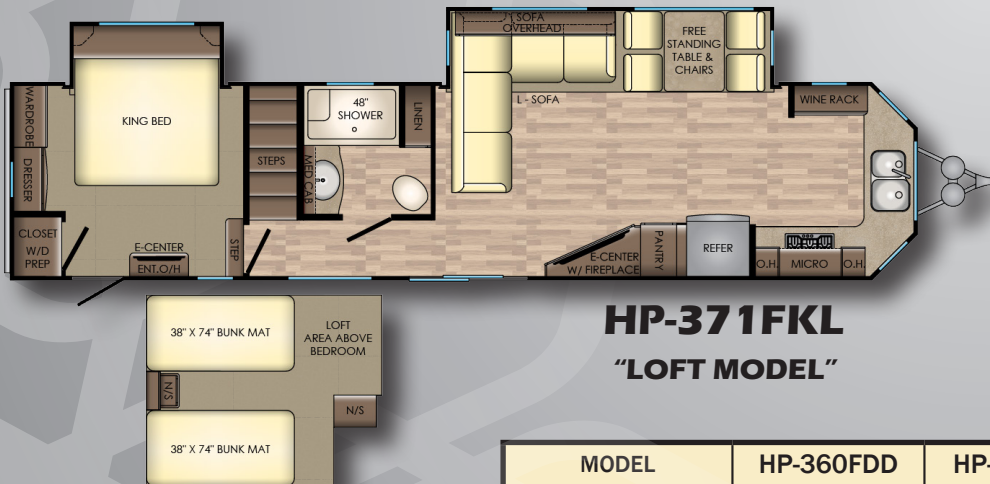
The Hampton is an extended stay travel trailer that won't make you sacrifice any home amenities. Crossroads RV has designed and produced the Hampton to feel like home away from home. From the residential stainless steel appliances, solid surface counter tops, residential wood blinds, 8' ceiling, modern cabinetry and abundance of storage are just a glimpse of what the Hampton offers! Also, Hampton features a detachable hitch and LP connections at both ends to make your set up ideal for any location.



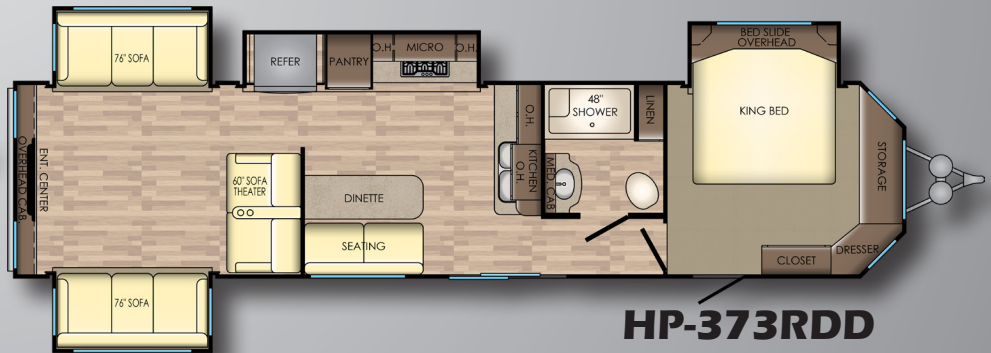
HP-360FDD



HP-370FDL
"LOFT MODEL"



HP-371FKL
"LOFT MODEL"



HP-373RDD

MODEL	HP-360FDD	HP-370FDL	HP-371FKL	HP-373RDD
DRY WEIGHT	10536	11247	10655	10984
LENGTH	40' 3"	41' 0"	41' 0"	41' 0"
EXT. HEIGHT W/ A/C	13' 6"	13' 6"	13' 6"	13' 0"
FRESH WATER	66 Gal	66 Gal	66 Gal	66 Gal
BLACK WATER	44 Gal	44 Gal	44 Gal	44 Gal
GRAY WATER	88 Gal	88 Gal	88 Gal	44 Gal





373RDD - Rear Living Area



373RDD - Dinette

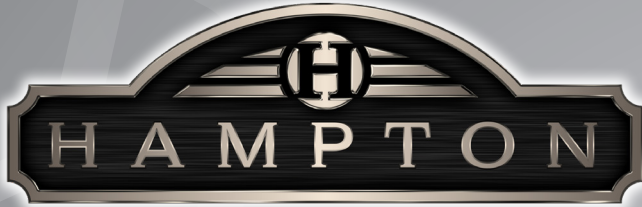


373RDD - Bedroom



373RDD - Kitchen

STANDARDS AND OPTIONS



Heron Creek



Oak Hill



Pine Valley



Shadow Ridge

STANDARDS

LIVING ROOM

- Exterior Cable w/ Satellite Hookup & Booster
- 8' from Floor to Ceiling Height
- 7' 0" Headroom in Slide-Outs
- Two Toned Wood Fascia
- Decorative Accent Lighting
- Powered Theatre Seating (VBM)
- AM/FM/CD/DVD Player w/ Bluetooth
- Four Decor Choices
- TV Antenna w/ Cable Output
- HD LED TV
- Living Room Tri-Fold Hide-A-Bed Sofa
- Patio Door w/ Swing-Out Assist Rail
- Interior LED Lighting
- Wood Blinds

KITCHEN

- Stainless Steel Appliances
- Residential Refrigerator w/ Icemaker
- Stainless Steel Oven
- Stainless Steel Microwave
- Solid Surface Countertops
- Raised Panel Cabinet Door
- Deep Stainless Steel Sink
- Faucet w/ Pull-Out Sprayer
- Residential Overhead Cabinets w/ Lighting
- Freestanding Table and Chairs - VBM
- Full Extension Ball Bearing Drawer Guides

BEDROOM

- TV Hook-up
- Deluxe Closet
- Coordinated Window Treatments & Bedspread
- King Sized Residential Mattress
- Living Room and Bedroom Ceiling Fan - VBM

EXTERIOR

- Tinted Glass Windows
- Patio Awning
- Exterior Speakers
- Outside Faucet

CONSTRUCTION

- 50 Amp Service
- One Piece Radius Roof
- 3/8" Roof Decking
- 16" OC Truss Rafters with 4-1/2" Crown

- Fiberglass Roof & Floor Insulation
- Rain Gutters Along Entire Roof Line
- 15,000 BTU Ducted A/C Wired & Prepped for 2nd A/C in Master Bedroom
- 2nd A/C Standard in Loft Models
- 35,000 BTU Floor Ducted Furnace
- 5/8" Floor Decking
- 16" Tires
- 60" x 76" Patio Door
- 99" Overall Unit Width
- Electric Slides Throughout
- Dual LP Tank Hook-up (Front and Back)
- PolarTec Upgrade Insulation Package
- 12 Gal DSI Gas/Electric Water Heater
- Black Tank Flush
- Enclosed Underbelly
- Full Fiberglass Front Cap w/ Recessed Lighting
- Swing-Out Entry Assist Handle at Second Door

CONVENIENCE

PACKAGE (STANDARD)

- Smoke Detector
- LP Detector
- 15,000 BTU A/C
- Awning
- Microwave
- Power Vent in Bathroom
- TV Antenna
- Tub Surround
- Water Heater Bypass
- Quilted Bedspread

OPTIONS

- 13,500 BTU A/C for Bedroom

*VBM: Varies By Model

www.crossroadsrv.com

1140 W. Lake St Topeka, IN 46571

(260) 593 - 3850

DISCLAIMER: Product information is as accurate as possible as of the date of publication of this brochure. All features, floor plans, and specifications in this brochure are subject to change without notice. Please also consult CrossRoads' web site at www.crossroadsrv.com for more current product information and specifications. Tow Vehicle Disclaimer. CAUTION: Owners of CrossRoads recreational vehicles are solely responsible for the selection and proper use of tow vehicles. All customers should consult with a motor vehicle manufacturer or their dealer concerning the purchase and use of suitable tow vehicles for CrossRoads products. CrossRoads disclaims any liability or damages suffered as a result of the selection, operation, use or misuse of a tow vehicle. CROSSROADS' LIMITED WARRANTY DOES NOT COVER DAMAGE TO THE RECREATIONAL VEHICLE OR THE TOW VEHICLE AS A RESULT OF THE SELECTION, OPERATION, USE OR MISUSE OF THE TOW VEHICLE. REFERENCE CROSSROADS RV COMPANY OWNERS MANUAL FOR LIMITED WARRANTY DETAILS. *Length is defined as the distance from the centerline of hitch pin/coupler to rear bumper of trailer.

