

# CARGO TRAILERS



8.5 x 18

**A HIGHER STANDARD OF PERFORMANCE**



6 x 12



COMMERCIAL-QUALITY TRAILERS  
WITH PREMIUM FEATURES



COMMERCIAL-QUALITY TRAILERS

# THE BIG 10

## REASONS BRAVO IS A BETTER TRAILER STANDARD ON ALL MODELS



1

### TUBE FRAMES

All Bravo trailers have tube main frames that are stronger, straighter and tow better. A combination of Bravo's tube main frame, top rail and front end leads to true commercial quality trailers.



2

### PROTECTED WIRING

Bravo Trailers' in-frame wiring offers much more protection from road debris and weather. Bravo's protected wiring is the best in the industry. We will never leave you stranded.



3

### ROOF FLASHING

Roof leaks are a chronic problem in enclosed cargo trailers. A combination of roof flashing at critical joints, hi-tech roof sealant and better workmanship will help eliminate leaks.



4

### STEEL BACKERS

All exterior side wall lighting and door hold backs are mounted in a steel backer. They also act as a gusset connecting the front and rear to the side walls for a more commercial-grade frame.



5

### SEALED FLOORS

Help keep your valuable cargo dry. Our 3/4" floors are fully sealed around the perimeter edges. Steel provides the backing and hi-tech sealant is used to help keep the water and dust out.



6

### PRIMER

All painted areas on Bravo trailers are prepped, primed and painted. Our better prep, primer and paint combined with all of our trailers being manufactured under one roof leads to much better, longer lasting paint.



7

### REINFORCED A-FRAME

Reinforced A frames combined with the vertical tubes in all of our front ends make Bravo trailers the strongest in the business. Reinforced A frames equal stronger, safer and longer lasting trailers.



8

### WHEEL BOX

8.5' wide trailer sidewalls include 1"x3" tubing across the top of the wheel box connected to 1"x3" tubing running vertically from the side rail to the tube top rail at the front and rear of the wheel box.



9

### REAR RAMP DOOR

All Bravo trailers with rear ramp doors have a tube connecting the rear cross member where the hinge is welded on to the nearest cross member. This reinforcement adds strength at a critical tension point.



10

### SEALED SEAMS

All Bravo trailers have sealed side wall seams keeping dust and moisture out. All screwed trailers have a bead of silicone applied between the side wall aluminum sheets and screwless trailers are sealed by the 3M tape.

## FIVE MORE STANDARD BRAVO FEATURES FOR A COMMERCIAL QUALITY PRODUCT!

## PLUS 5



1

### ALL EXTERIOR LED

Just like commercial quality semi trailers all Bravo trailers come standard with exterior LED lighting. Not only are LED lights five times longer lasting than incandescent they are much brighter and draw less voltage. Brighter lighting makes for safer trailering!



2

### WORKMANSHIP

We are proud of the trailers we build! Please take a look at the fit and finish of our trailer versus the competitions. Look at the trim, miters, straightness of our tube frames, paint, interior finish and judge for yourself. We take the time to do it right, both inside and out.



3

### SEALED FRONT CORNERS

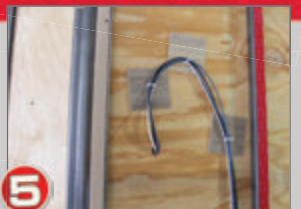
Enclosed cargo trailers are notorious for leaking. Bravo seals the front interior corners with aluminum and sealant so water and dust can't get inside. We also seal the plywood floor along the front of the trailer. Do you want your valuable cargo to get dusty or wet?



4

### SEALED WHEEL BOXES

Our goal at Bravo is for "no leak no dust" trailers and our sealed wheel boxes are a big part of achieving that. We seal both the external and internal joints before painting to keep water and dust out. It's details like this that make Bravo the best cargo trailer on the market today!



5

### SECURE WIRING

The combination of Bravo's protected wiring and secured wiring inside the walls makes for the most reliable trailer wiring on the market today. Other manufacturers simply let both the 12V and 110V wiring hang loose which can cause a safety hazard and leave you stranded.



**scout**

**SCOUT TRAILERS BY BRAVO** ARE NOT YOUR TYPICAL "THROW AWAY" ENTRY LEVEL TRAILERS. EVERY SCOUT IS TRUE COMMERCIAL QUALITY WITH ALL THE BRAVO BIG 10 PLUS 5 FEATURES. THEY ARE AVAILABLE IN SIZES FROM 5X8 TO 8.5X24 WITH AN IMPRESSIVE COMBINATION OF STANDARD FEATURES AND OPTIONS. IF YOU WANT COMMERCIAL QUALITY, A SCOUT TRAILER IS FOR YOU.

**POPULAR STANDARDS & OPTIONS** SEE SPECS & MORE AT [BRAVOTRAILERS.COM](http://BRAVOTRAILERS.COM)



**STANDARDS**

- All LED lighting
- 3/8" DRYMAX walls
- 3/4" DRYMAX floor
- 4" drop Dexter spring axles
- .030 aluminum exterior
- 16" O.C. wall posts
- 30" V Nose on 8.5'w (Scout only)
- LED dome light and switch
- Tube main frame
- Tube top rail and front wall
- Z-Tech undercoated frame
- Radial Tires
- 3 year warranty

**OPTIONAL FRONT END STYLES**

- 18" V Nose 6 and 7
- 30" V Nose 7
- 60" V Nose 8.5
- 60" V Nose with Front Ramp
- 30" Slant V Nose

**AVAILABLE PACKAGES**

- Street
- Appearance
- Auto Hauler (8.5' wide)
- Terrain
- Motorcycle
- Draft



STANDARD FLOW-THRU SIDEWALL VENTS KEEP AIR MOVING ON THE ROAD OR AT REST



STANDARD LED LIGHTING IS BRIGHTER, SAFER AND LASTS LONGER



3/8" DRYMAX SIDEWALLS VS. LAUAN PROVIDE A MUCH STRONGER TRAILER

**BEST-IN-CLASS VALUE**

THERE IS A BRAVO TRAILER TO MEET EVERY NEED, BOTH RECREATIONAL AND COMMERCIAL. OUR UNBEATABLE COMBINATION OF GREAT LOOKS, BUILD QUALITY AND OPTIONS IS UNSURPASSED IN THE INDUSTRY. AND BRAVO'S COMMITMENT TO YOUR TOTAL SATISFACTION AFTER THE SALE IS LEGENDARY. BRAVO TRAILERS WILL LAST LONGER, WORK BETTER AND BE WORTH MORE AT TRADE IN TIME. THAT'S THE BRAVO WAY.



6X12 WITH TWO-TONE EXTERIOR WITH ANODIZED STRIP AND SILVER ALUMINUM BLADE WHEELS



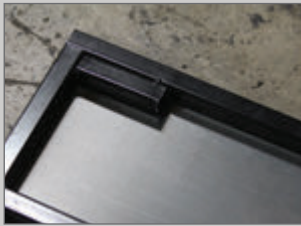
7X14 WITH TERRAIN PACKAGE, TWO-TONE EXTERIOR WITH ANODIZED STRIP AND BLACK ALUMINUM BLADE WHEELS



8.5 x 20



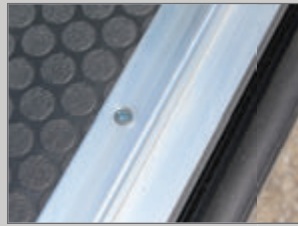
**STAR TRAILERS BY BRAVO** ARE GREAT LOOKING, PREMIUM COMMERCIAL-QUALITY TRAILERS AT A MID-RANGE PRICE. STAR'S COMBINATION OF STANDARD FEATURES AND AVAILABLE PACKAGES MAKE IT THE BEST VALUE IN THE INDUSTRY. THEY ARE AVAILABLE IN 6', 7' AND 8.5' WIDTHS, TAGS AND GOOSENECKS WITH LENGTHS TO 48'. YOU DESERVE SOMETHING SPECIAL!



STEEL FRAMED REAR DOUBLE DOORS



CAST ALUMINUM DOOR HOLD BACKS



HEAVY-DUTY FLOOR TRIM



6 X 10

## POPULAR STANDARDS [SEE SPECS & MORE AT BRAVOTRAILERS.COM](http://www.bravotrailers.com)

### STANDARDS

- All Scout features plus:
- One-piece aluminum roof
- Tube wall posts
- All LED lighting
- Zinc tongue jack and sand foot
- Rear corner castings
- TPO front cap
- Bright anodized aluminum front corners
- HD floor trim with recessed screws
- Beefier trim
- Cast alum. door hold backs
- Bravo BIG 10 Plus 5 features
- 5 Year warranty

### OPTIONAL FRONT END STYLES

- 18" V Nose 6 and 7
- 30" V Nose 7 and 8.5
- 60" V Nose 8.5
- 60" V Nose with Front Ramp
- 30" Slant V Nose

**ALUMINUM** available in limited sizes



8.5 x 38 WITH SPREAD AXLES, SUPERSTAR PACKAGE AND 6' RISER

## GOOSENECK AND FIFTHWHEEL TRAILERS

THESE HEAVY DUTY BEAUTIES ARE BUILT TO LAST! BRAVO'S STAR GN/FW TRAILERS ARE TRUE COMMERCIAL QUALITY AND ARE BUILT FOR YEARS OF USE. DESIGNED BY OUR VETERAN DESIGN TEAM, THEIR BEEFY FRAMES TOW BETTER AND WON'T LEAVE YOU STRANDED. CHOOSE FROM A VARIETY OF SIZES, PAYLOADS AND CUSTOM OPTIONS TO ACHIEVE YOUR DREAM TRAILER!

- 8.5" wide from 24' to 50'
- Taper nose styles available
- 6' and 8' riser lengths
- Heavy duty tube frames
- Two-speed drop down jacks
- Double tube main frames
- Tandem and triple axles
- Spread axles style available
- 36" ATP access door and riser
- 1000's of options to fit your needs



6 x 12



7 x 16



**POPULAR PACKAGES:** GETTING A TRAILER TO FIT YOUR SPECIFIC NEED IS EASY AT BRAVO TRAILERS. WHETHER IT BE A CONCESSION TRAILER TO A FIBER OPTIC SPLICING TRAILER BRAVO HAS A PACKAGE FOR YOU. NOT ONLY WILL YOUR TRAILER HAVE THE BASE OPTIONS TO FILL YOUR NEEDS IT WILL BE ENGINEERED FOR YOUR SPECIFIC USE. GO TO [BRAVOTRAILERS.COM](http://BRAVOTRAILERS.COM) FOR A COMPLETE LIST OF PACKAGES AND THEIR CONTENTS.

### THE LANDSCAPE PACKAGE

LET BRAVO BUILD YOUR TRUE COMMERCIAL QUALITY LANDSCAPE TRAILER!



GALVANIZED STEEL PLATE PROTECTS CORNER POST

- 54" Heavy Duty triple tube a frame
- Set back nose jack
- 7 gauge front cross member
- HD ramp door w spring assist
- 3/4" womanized floor with 12" kick plate
- 3000# drop down jacks
- Galvanized rear corner post protection
- 36" Steel framed HD side door with bar lock
- ATP lock protection plates on side and rear doors



7 X 14 WITH OPTIONAL ADJUSTABLE PINTLE EYE HITCH

### THE MOTORCYCLE PACKAGE

PICK FROM A STANDARD MODEL OR LO RIDER TO CREATE YOUR DREAM TRAILER!

- Ramp Door with spring assist and flap
- 24" beavertail
- 1000# drop down jacks
- Wheel Chock plate (chock optional)
- 4-5000# D rings bolted through steel
- 16" cross members
- 7' wide TA trailers come with 7 D-rings and 2 chock plates

### BOSS PACKAGE

FOR THE ULTIMATE MOTORCYCLE TRAILER!

- Motorcycle package plus
- 24" bright finish anodized aluminum sides and rear
- Bright finish anodized aluminum rear corners and rear header
- Blade aluminum wheels
- White vinyl ceiling
- Chrome bezels for LED tail lights



7 x 14 LoRider



FOR THE ULTIMATE IN TRAILERING BEAUTY!

- Blade aluminum wheels in silver or black
- Polished aluminum front and rear castings
- HD top trim
- Stainless steel front corners
- Stainless steel front insert
- Bright finish anodized aluminum rear corners and header
- Chrome bezel on rear LED tail lights
- Cool Carbon fiber look BRAVO graphics



8.5 x 22 WITH SPREAD AXLES

# IF YOU DREAM IT WE CAN BUILD IT!



## CUSTOM CARGO TRAILER OPTIONS

**OPTIONS** WE LOVE CUSTOM TRAILERS AT BRAVO! OUR DEDICATED DESIGN AND BUILD TEAM WILL GET YOUR TRAILER BUILT RIGHT AND ON TIME. OUR OPTIONS ARE ENGINEERED IN, NOT JUST ADDED ON. COMMERCIAL QUALITY APPLIES TO BOTH OUR TRAILERS AND OPTIONS. LET US EXCEED YOUR EXPECTATIONS.



FINISHED INTERIORS



TIE DOWN OPTIONS



LADDER RACKS



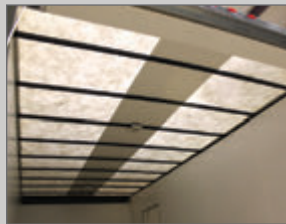
SPARE TIRE OPTIONS IN A VARIETY OF POSITIONS



VENDOR DOORS



DROP DOWN JACKS



TRANSLUCENT CEILING



BLACK MARBLE, BLACK COIN, ATP FLOORING



ALUMINUM TRANSITION FLAP



GENERATOR AND ELECTRICAL OPTIONS



INTERIOR CABINETRY



12V POWER NOSE JACK



SPLIT COLOR WITH BRIGHT FINISH STRIP

GO TO [BRAVOTRAILERS.COM](http://BRAVOTRAILERS.COM)  
FOR HUNDREDS OF OPTIONS  
AND ADDITIONAL PICTURES

LIKE US ON FACEBOOK 

# SPECIFICATIONS

SEE COMPLETE SPECS & ADDITIONAL MODELS AT [BRAVOTRAILERS.COM](http://BRAVOTRAILERS.COM)

**SCOUT**

	SC58SA	SC610SA	SC612SA	SC612TA2	SC714TA2	SC716TA2	SC8520TA2	SC8524TA2	SC8520TA3	SC8524TA3
AXLES/SPRING	2990#	2990#	2990#	3500#	3500#	3500#	3500#	3500#	5200#	5200#
BRAKES	OPTION	OPTION	OPTION	ELECTRIC	ELECTRIC	ELECTRIC	ELECTRIC	ELECTRIC	ELECTRIC	ELECTRIC
TUBE FRAME	3" TUBE	3" TUBE	3" TUBE	4" TUBE	4" TUBE	4" TUBE	6" TUBE	6" TUBE	6" TUBE	6" TUBE
HITCH BALL SIZE	2"	2"	2"	2 5/16"	2 5/16"	2 5/16"	2 5/16"	2 5/16"	2 5/16"	2 5/16"
CURB WEIGHT**	850#	1080#	1250#	1615#	2053#	2278#	2900#	3384#	3180#	3688#
HITCH WEIGHT	128#	162#	187#	242#	307#	341#	435#	507#	447#	553#
GVWR	2990#	2990#	2990#	7000#	7000#	7000#	7000#	7000#	9990#	9990#
PAYLOAD CAPACITY	2140#	1910#	1740#	5350#	4947#	4722#	4100#	3616#	6810#	6302#
OVERALL LENGTH	12'-2"	14'-2"	16'-2"	16'-2"	18'-1"	20'-1"	24'-2"	28'-2"	24'-2"	28'-2"
OVERALL WIDTH	6'-6"	7'-6"	7'-6"	7'-6"	8'-6"	8'-6"	8'-6"	8'-6"	8'-6"	8'-6"
OVERALL HEIGHT	6'-8"	7'-8"	7'-8"	7'-9"	7'-8"	7'-8"	8'-5"	8'-5"	8'-5"	8'-5"
EXTERIOR BOX WIDTH	5'	6'	6'	6'	7'	7'	8'-4"	8'-4"	8'-4"	8'-4"
INTERIOR LENGTH	8'-5"	10'-5"	12'-5"	12'-5"	14'-6"	16'-6"	20'-6"	24'-6"	20'-6"	24'-6"
INTERIOR WIDTH	4'-8"	5'-8"	5'-8"	5'-8"	6'-9"	6'-9"	8'	8'	8'	8'
WIDTH BETWEEN W/W	N/A	N/A	N/A	N/A	N/A	N/A	81-3/4"	81-3/4"	81-3/4"	81-3/4"
INTERIOR HEIGHT	5'-1"	6'-1"	6'-1"	6'-1"	6'-1"	6'-1"	6'-7"	6'-7"	6'-7"	6'-7"
PLATFORM HEIGHT	18"	18"	18"	19"	18"	18"	20"	20"	20"	20"
REAR DOOR WIDTH	4'-2"	5'-2"	5'-2"	5'-2"	6'-3"	6'-3"	7'-7"	7'-7"	7'-7"	7'-7"
REAR DOOR HEIGHT	4'-6"	5'-6"	5'-6"	5'-6"	5'-6"	5'-6"	6'	6'	6'	6'
SIDE DOOR WIDTH	N/A	32"	32"	32"	32"	32"	36"	36"	36"	36"
SIDE DOOR HEIGHT	N/A	5'-4"	5'-4"	5'-4"	5'-4"	5'-4"	5'-10"	5'-10"	5'-10"	5'-10"

**star**

	ST610SA	ST612SA	ST612TA2	ST714TA2	ST716TA2	ST716TA3	ST8516TA2	ST8524TA2	ST8524TA3	ST8528TA3
AXLES/SPRING	2990#	2990#	3500#	3500#	3500#	5200#	3500#	3500#	5200#	5200#
BRAKES	OPTION	OPTION	ELECTRIC	ELECTRIC	ELECTRIC	ELECTRIC	ELECTRIC	ELECTRIC	ELECTRIC	ELECTRIC
TUBE FRAME	3" TUBE	3" TUBE	4" TUBE	6" TUBE	6" TUBE	6" TUBE	6" TUBE	6" TUBE	6" TUBE	6" TUBE
HITCH BALL SIZE	2"	2"	2 5/16"	2 5/16"	2 5/16"	2 5/16"	2 5/16"	2 5/16"	2 5/16"	2 5/16"
CURB WEIGHT**	1145#	1300#	1720#	2110#	2300#	2665#	2418#	3384#	3697#	4207#
HITCH WEIGHT	155#	160#	258#	315#	345#	400#	328#	456#	499#	568#
GVWR	2990#	2990#	7000#	7000#	7000#	9990#	7000#	7000#	9990#	9990#
PAYLOAD CAPACITY	1845#	1690#	5280#	4890#	4700#	7325#	4584#	3616#	6293#	5783#
OVERALL LENGTH	14'-2"	16'-2"	16'-2"	18'-1"	20'-1"	20'-1"	20'-2"	28'-2"	28'-2"	32'-2"
OVERALL WIDTH	7'-8"	7'-8"	7'-8"	8'-6"	8'-6"	8'-6"	8'-6"	8'-6"	8'-6"	8'-6"
OVERALL HEIGHT	7'-8"	7'-8"	7'-9"	7'-10"	7'-10"	7'-10"	8'-5"	8'-5"	8'-5"	8'-5"
EXTERIOR BOX WIDTH	6'	6'	6'	7'	7'	7'	8'-4"	8'-4"	8'-4"	8'-4"
INTERIOR LENGTH	10'-2"	12'-2"	12'-2"	13'-8"	15'-8"	15'-8"	15'-8"	23'-8"	23'-8"	27'-8"
INTERIOR WIDTH	5'-8"	5'-8"	5'-8"	6'-8"	6'-8"	6'-8"	8'-1"	8'-1"	8'-1"	8'-1"
WIDTH BETWEEN W/W	N/A	N/A	N/A	N/A	N/A	N/A	81-3/4"	81-3/4"	81-3/4"	81-3/4"
INTERIOR HEIGHT	6'-1"	6'-1"	6'-1"	6'-1"	6'-1"	6'-1"	6'-7"	6'-7"	6'-7"	6'-7"
PLATFORM HEIGHT	18"	18"	19"	20"	20"	20"	20"	20"	20"	20"
REAR DOOR WIDTH	5'-3"	5'-3"	5'-3"	6'-3"	6'-3"	6'-3"	7'-7"	7'-7"	7'-7"	7'-7"
REAR DOOR HEIGHT	5'-6"	5'-6"	5'-6"	5'-6"	5'-6"	5'-6"	6'	6'	6'	6'
SIDE DOOR WIDTH	32"	32"	32"	32"	32"	32"	36"	36"	36"	36"
SIDE DOOR HEIGHT	5'-4"	5'-4"	5'-4"	5'-4"	5'-4"	5'-4"	5'-10"	5'-10"	5'-10"	5'-10"

# WHAT SETS US APART FROM THE CROWD?



## THE BRAVO COMPANY

BRAVO TRAILERS FACTORY IS THE MOST EFFICIENT IN THE INDUSTRY. OUR TRAILERS ARE BUILT UNDER ONE ROOF UTILIZING LEAN MANUFACTURING PRINCIPLES. THIS, COMBINED WITH OUR SEASONED ENGINEERING TEAM AND A SIMPLER PRODUCT LINE, WE'LL ACHIEVE OUR QUEST FOR THE BEST QUALITY AND THE BEST VALUE.



## CUSTOMER SERVICE

NO OTHER TRAILER MANUFACTURER WILL ADDRESS YOUR NEEDS AS QUICKLY OR AS FAIRLY AS BRAVO. SATISFIED CUSTOMERS ARE BRAVO'S GREATEST ASSET. WHETHER IT IS A PARTS ORDER OR WARRANTY CLAIM, WE WILL EXCEED YOUR EXPECTATIONS. WE BELIEVE TRUE VALUE COMES FROM THE OVERALL OWNERSHIP EXPERIENCE.



## ULTIMATE WARRANTY

THINGS DO GO WRONG. IF YOU EVER HAVE A WARRANTY CLAIM WE WILL ADDRESS IT QUICKLY AND FAIRLY. WE AT BRAVO TRAILERS ARE PROUD OF THE PRODUCTS WE BUILD AND WILL BACK THEM UP. A WARRANTY IS ONLY AS GOOD AS THE COMPANY STANDING BEHIND IT, ALONG WITH THE PEOPLE THAT CARE ABOUT YOUR SATISFACTION.



## BETTER PARTS

ONE OF THE CHRONIC INDUSTRY PROBLEMS IS POOR PARTS SUPPORT FROM TRAILER MANUFACTURERS. AT BRAVO TRAILERS, WE WILL KEEP IN STOCK AND SHIP YOUR PARTS TO YOU OR YOUR DEALER WITHIN 24 HOURS. OUR COMMITMENT TO THIS GOAL, ALONG WITH A MUCH SIMPLER PRODUCT LINE, WILL HELP US ACHIEVE IT. WE WILL NEVER LEAVE YOU STRANDED.



BRAVO TRAILERS LLC  
19319 COUNTY RD 8  
BRISTOL IN 46507

574 848-7500 PHONE  
888 810-7555 FREE  
574 848-7550 FAX

[bravotrailers.com](http://bravotrailers.com)

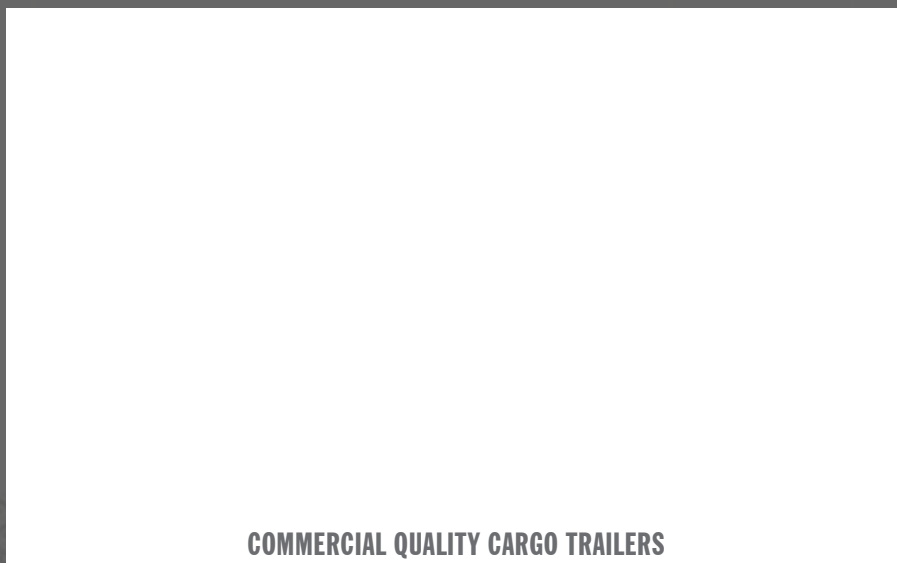
LIKE US ON FACEBOOK

## WE USE WHAT WE SELL

BRAVO TRAILERS WAS FOUNDED BY MITCHELL BENDER WITH ONE GOAL IN MIND: TO BUILD A GREAT TRAILER YOU CAN BE PROUD TO OWN. AS A 25-YEAR INDUSTRY VETERAN WHO PREVIOUSLY FOUNDED AND BUILT THE LARGEST CARGO TRAILER MANUFACTURER IN THE COUNTRY, STARTING BRAVO WITH A CLEAN SHEET OF PAPER WAS A DREAM COME TRUE. TOGETHER WITH THE BRAVO TEAM, THE COMPANY IS IN A UNIQUE POSITION TO TAKE THE INDUSTRY TO A HIGHER LEVEL.



## YOUR LOCAL BRAVO DEALER:



COMMERCIAL QUALITY CARGO TRAILERS

©2014 BRAVO TRAILERS, LLC. DUE TO CONTINUOUS PRODUCT, FEATURE AND SERVICE IMPROVEMENTS; STANDARD FEATURES, OPTIONAL ACCESSORIES AND SPECIFICATIONS SUBJECT TO CHANGE WITHOUT NOTICE OR OBLIGATION. CAPACITIES ARE APPROXIMATE AND DIMENSIONS ARE NOMINAL. WEIGHT SPECIFICATIONS ARE BASED ON STANDARD MODELS AND DO NOT INCLUDE OPTIONAL EQUIPMENT. PRODUCT PHOTOGRAPHY, ILLUSTRATIONS OR CHARTS MAY SHOW EQUIPMENT AND DATA THAT IS AVAILABLE AT AN ADDITIONAL COST. BRAVO TRAILERS, LLC RESERVES THE RIGHT TO MAKE CHANGES TO PRICES AND MODELS, ALONG WITH DISCONTINUING MODELS WITHOUT NOTICE OR OBLIGATION. CONSULT YOUR AUTHORIZED BRAVO TRAILERS DEALER FOR THE MOST CURRENT INFORMATION. BRAVO IS A MEMBER IN GOOD STANDING WITH THE NATM.



# ALUMINUM TRAILERS



**A HIGHER STANDARD OF PERFORMANCE**

**Bravo**  
TRAILERS



TRAILERS SHOWN MAY HAVE OPTIONAL EQUIPMENT

# CARGO TRAILERS



AST612SA WITH RAMP DOOR



AST714TA2 WITH 30" V-NOSE

TRAILERS SHOWN MAY HAVE OPTIONAL EQUIPMENT



**STAR ALUMINUM TRAILERS BY BRAVO** ARE GREAT LOOKING, PREMIUM COMMERCIAL QUALITY ALUMINUM TRAILERS. DON'T CONFUSE THESE WITH THE LIGHT DUTY RECREATIONAL TRAILERS IN THE MARKETPLACE TODAY. OUR TRAILERS HAVE BEEFIER FRAMES AND ARE BUILT WITH BETTER PARTS TO LOOK GREAT AND LAST A LIFETIME. CHECK OUT BRAVO'S ALUMINUM BIG 10 PLUS 5 TO SEE FOR YOURSELF! STAR ALUMINUM TRAILERS ARE AVAILABLE IN 6', 7', AND 8.5' WIDTHS AND LENGTHS TO 32'. YOU DESERVE SOMETHING SPECIAL!



ALUMINUM SEAMLESS ROOF



ALUMINUM BAR LOCKS WITH STAINLESS STEEL FASTENERS



CAST ALUMINUM DOOR HOLD BACKS



HEAVY DUTY FLOOR TRIM WITH RECESSED SCREWS

## POPULAR STANDARDS (6' & 7' WIDE) SEE SPECS & MORE AT BRAVOTRAILERS.COM

- VHB fastenerless exterior
- .030 aluminum exterior
- Seamless aluminum roof
- Anodized front corners
- TPO front cap
- Stainless steel exterior fasteners
- Dexter drop spring axles
- Electric brakes on TA2 and up
- Radial tires, silver mod style wheels
- Aluminum fenders
- 2"x 3" tube on 6' wide SA models
- 5" double hollow tube on 6' wide TA and all 7' wide models
- Exterior clear lenses LED DOT lighting
- 2 LED interior dome lights w/ switch
- 24" ATP stoneguard
- 32" side door with flush lock
- 3/8" plywood walls
- 3/4" plywood floor
- Bravo BIG 10 + 5



AST725TA2 INLINE WITH TERRAIN PACKAGE



AST8524TA2 DECKOVER WITH TERRAIN PACKAGE

## SNOWMOBILE

### & ATV TRAILERS

Choose our turn key TERRAIN package to create your dream snowmobile or ATV trailer. They are available in deck over and inline styles.

- Front (64") and rear ramp doors with spring
- Aluminum 2-way sidewall vents ILO standard
- Galvanized ski guides in V and ramp
- 60" V-nose
- 3/4" wolmanized flooring
- 3/4" x 12" Plywood kickplate

# MOTORSPORT & CAR TRAILERS



ASTA8524TA3 WITH SUPERSTAR PACKAGE

**COMMERCIAL**  
**RECREATIONAL**

**ALL STAR TRAILERS ARE COMMERCIAL QUALITY** AND BUILT TO LAST. WHETHER YOU ARE USING YOUR STAR TRAILER FOR WORK OR PLAY REST ASSURED THESE TRAILER ARE TOUGH AND WILL GET THE JOB DONE. CHOOSE FROM ONE OF OUR TURN KEY SPECIFIC USE PACKAGES TO CREATE YOUR DREAM CAR, SNOWMOBILE, MOTORCYCLE OR ATV TRAILER. YOU HAVE CHOSEN TO SPEND THE EXTRA MONEY ON AN ALUMINUM ENCLOSED TRAILER. CHOOSE THE BEST, BRAVO TRAILERS PULL BETTER, LOOK BETTER AND WILL LAST LONGER THEN THE OTHERS!



DOUBLE TUBE A FRAMES WITH STEEL COUPLER



FLOW-THRU SIDEWALL VENTS



EXTERIOR SCREWS ARE STAINLESS STEEL



ALL TERRAIN PACKAGES COME WITH PROTECTED REAR CORNER POSTS

## POPULAR STANDARDS (8.5' WIDE) SEE SPECS & MORE AT [BRAVOTRAILERS.COM](http://BRAVOTRAILERS.COM)



### ALL PREVIOUS STANDARDS PLUS:

- Dexter torsion axles
- Electric brakes
- 6" double hollow tube frame
- Triple tube tongue
- 36" side door with flushlock

### 8.5' WIDE AUTO HAULERS HAVE IN ADDITION:

- Mini spread axle configuration
- 5 1/2" Super Duty bottom trim
- Aluminum wheels
- Polished Aluminum fenders

- 16" OC wall, roof and floor members
- Polished corner castings with stainless steel insert
- Stainless steel front corners
- 3/4 Advantech flooring
- 48" side door with flushlock

- Ramp door with flap and aluminum barlocks
- Beavertail
- 4 5000# recessed d-rings
- 1 non power roof vent
- Bravo BIG 10+5

## CUSTOM COMMERCIAL

WOW, we do it all! If you have a specific commercial trailer need we can build it. Bravo's dealers work closely with our engineering and design team to get your project built right and on time. From individual trailers to fleets we will produce a custom build that will exceed your expectations.



AST714TA2



# OPTIONS



TIE DOWN OPTIONS



LADDER RACKS



CUSTOM CABINERY



TURN KEY TRAILERS,  
OUR SPECIALTY!



SPLIT COLORS



ALUMINUM WHEELS



MOTORCYCLE CHOCKS



SLANT V NOSE STYLES



12V POWER NOSE JACK



DROP DOWN JACKS



EXTRUDED ALUMINUM,  
BLACK COIN, ATP FLOORING



ALUMINUM TRANSITION FLAP



FINISHED INTERIORS

GO TO  
**BRAVOTRAILERS.COM**  
FOR HUNDREDS OF  
OPTIONS!

# SPECIFICATIONS

SEE COMPLETE SPECS & ADDITIONAL MODELS AT [BRAVOTRAILERS.COM](http://BRAVOTRAILERS.COM)

	AST610SA	AST612SA	AST714TA2	AST716TA2	AST8520TA2	ASTA8524TA3	ASTA8530TA4
AXLES/SPRING (TORSION ON 8.5' W MODELS)	2990#	2990#	3500#	3500#	3500#	5200#	6000#
TUBE FRAME	2" X 3"	2" X 3"	5" DOUBLE	5" DOUBLE	6" DOUBLE	6" DOUBLE	6" DOUBLE
HITCH BALL SIZE	2"	2"	2-5/16"	2-5/16"	2-5/16"	2-5/16"	2-5/16"
CURB WEIGHT	1005#	1105#	1775#	1935#	2850#	3712#	4580#
HITCH WEIGHT	100#	110#	240#	261#	427#	408#	504#
GVWR	2990#	2990#	7000#	7000#	7000#	9990#	12000#
PAYLOAD CAPACITY	1985#	1885#	5225#	5065#	4150#	6278#	7420#
OVERALL LENGTH	14'-2"	16'-2"	18'-1"	20'-1"	24'-2"	28'-2"	34'-2"
OVERALL WIDTH	7'-8"	7'-8"	8'-6"	8'-6"	8'-6"	8'-6"	8'-6"
OVERALL HEIGHT	7'-7"	7'-7"	7'-8"	7'-8"	8'-4"	9'-1"	9'-2"
EXTERIOR BOX WIDTH	6'	6'	7'	7'	8'-4"	8'-4"	8'-4"
INTERIOR LENGTH	10'-2"	12'-2"	13'-8"	15'-8"	19'-8"	23'-8"	29'-8"
INTERIOR WIDTH	5'-9"	5'-9"	6'-9"	6'-9"	8'-1"	8'-1"	8'-1"
INTERIOR HEIGHT	71-3/4"	71-3/4"	71-3/4"	71-3/4"	77-3/4"	84"	84"
PLATFORM HEIGHT	18"	18"	19"	19"	20"	20"	21"
REAR DOORS	DOUBLE	DOUBLE	DOUBLE	DOUBLE	DOUBLE	RAMP	RAMP
SIDE DOOR WIDTH	32"	32"	32"	32"	36"	48"	48"

# THE BIG 10

## REASONS BRAVO IS A BETTER TRAILER STANDARD ON ALL ALUMINUM MODELS



### 1 TUBE FRAMES

All Bravo trailers have tube main frames that are stronger, straighter and tow better. A combination of Bravo's tube main frame, top rail wall posts and front end leads to true commercial quality trailers.



### 2 PROTECTED WIRING

Bravo Trailers' in-frame wiring offers much more protection from road debris and weather. Bravo's protected wiring is the best in the industry. We will never leave you stranded.



### 3 ROOF FLASHING

Roof leaks are a chronic problem in enclosed cargo trailers. A combination of roof flashing at critical joints, hi-tech roof sealant and better workmanship will help eliminate leaks.



### 4 ALUMINUM BACKERS

All exterior side wall lighting and door hold backs are mounted in an aluminum backer. They also act as a gusset connecting the front and rear to the side walls for a more commercial-grade frame.



### 5 SEALED FLOORS

Help keep your valuable cargo dry. Our 3/4" plywood floors are fully sealed around the perimeter edges. Aluminum provides the backing and hi-tech sealant is used to help keep the water and dust out.



### 6 STAINLESS STEEL FASTENERS

All Bravo aluminum trailers feature stainless steel exterior trim fasteners and aluminum bar locks. Both of these premium standard features won't rust and will look great for years to come. Our quality is in the details.



### 7 REINFORCED A-FRAME

Reinforced A frames combined with the vertical tubes in all of our front ends make Bravo trailers the strongest in the business. Reinforced A frames equal stronger, safer and longer lasting trailers.



### 8 WHEEL BOX

8.5' wide trailer sidewalls include 1"x3" tubing across the top of the wheel box connected to 1"x3" tubing running vertically from the side rail to the tube top rail at the front and rear of the wheel box.



### 9 REAR RAMP DOOR

All Bravo trailers with rear ramp doors have a tube connecting the rear cross member where the hinge is welded on to the nearest cross member. This reinforcement adds strength at a critical tension point.



### 10 SCREWLESS SIDEWALLS

All Bravo aluminum trailers come standard with 3M VHB screwless exterior aluminum sidewalls. The smooth exterior sidewalls not only look great but are better sealed against the elements.

## FIVE MORE STANDARD BRAVO FEATURES FOR A COMMERCIAL QUALITY PRODUCT!

# PLUS 5



### 1 ALL EXTERIOR LED

Just like commercial quality semi trailers all Bravo trailers come standard with exterior LED lighting. Not only are LED lights five times longer lasting than incandescent they are much brighter and draw less voltage. Brighter lighting makes for safer trailering!



### 2 WORKMANSHIP

We are proud of the trailers we build! Please take a look at the fit and finish of our trailer versus the competitors. Look at the trim, miters, straightness of our tube frames, paint, interior finish and judge for yourself. We take the time to do it right, both inside and out.



### 3 SEALED FRONT CORNERS

Enclosed cargo trailers are notorious for leaking. Bravo seals the front interior corners with aluminum and sealant so water and dust can't get inside. We also seal the plywood floor along the front of the trailer. Do you want your valuable cargo to get dusty or wet?



### 4 SEALED WHEEL BOXES

Our goal at Bravo is for "no leak no dust" trailers and our sealed wheel boxes are a big part of achieving that. We seal both the external and internal joints before assembling to keep water and dust out. It's details like this that make Bravo the best cargo trailer on the market today!



### 5 SECURE WIRING

The combination of Bravo's protected wiring and secured wiring inside the walls makes for the most reliable trailer wiring on the market today. Other manufactures simply let both the 12V and 110V wiring hang loose which can cause a safety hazard and leave you stranded.

# WHAT SETS US APART FROM THE CROWD?



## THE BRAVO COMPANY

BRAVO TRAILERS FACTORY IS THE MOST EFFICIENT IN THE INDUSTRY. OUR TRAILERS ARE BUILT UNDER ONE ROOF UTILIZING LEAN MANUFACTURING PRINCIPLES. THIS, COMBINED WITH OUR SEASONED ENGINEERING TEAM AND A SIMPLER PRODUCT LINE, WE'LL ACHIEVE OUR QUEST FOR THE BEST QUALITY AND THE BEST VALUE.



## CUSTOMER SERVICE

NO OTHER TRAILER MANUFACTURER WILL ADDRESS YOUR NEEDS AS QUICKLY OR AS FAIRLY AS BRAVO. SATISFIED CUSTOMERS ARE BRAVO'S GREATEST ASSET. WHETHER IT IS A PARTS ORDER OR WARRANTY CLAIM, WE WILL EXCEED YOUR EXPECTATIONS. WE BELIEVE TRUE VALUE COMES FROM THE OVERALL OWNERSHIP EXPERIENCE.



## ULTIMATE WARRANTY

THINGS DO GO WRONG. IF YOU EVER HAVE A WARRANTY CLAIM WE WILL ADDRESS IT QUICKLY AND FAIRLY. WE AT BRAVO TRAILERS ARE PROUD OF THE PRODUCTS WE BUILD AND WILL BACK THEM UP. A WARRANTY IS ONLY AS GOOD AS THE COMPANY STANDING BEHIND IT, ALONG WITH THE PEOPLE THAT CARE ABOUT YOUR SATISFACTION.



## BETTER PARTS

ONE OF THE CHRONIC INDUSTRY PROBLEMS IS POOR PARTS SUPPORT FROM TRAILER MANUFACTURERS. AT BRAVO TRAILERS, WE WILL KEEP IN STOCK AND SHIP YOUR PARTS TO YOU OR YOUR DEALER WITHIN 24 HOURS. OUR COMMITMENT TO THIS GOAL, ALONG WITH A MUCH SIMPLER PRODUCT LINE, WILL HELP US ACHIEVE IT. WE WILL NEVER LEAVE YOU STRANDED.



BRAVO TRAILERS LLC  
19319 COUNTY RD 8  
BRISTOL IN 46507

574 848-7500 PHONE  
888 810-7555 FREE  
574 848-7550 FAX

[bravotrailers.com](http://bravotrailers.com)

LIKE US ON FACEBOOK

## WE USE WHAT WE SELL

BRAVO TRAILERS WAS FOUNDED BY MITCHELL BENDER WITH ONE GOAL IN MIND: TO BUILD A GREAT TRAILER YOU CAN BE PROUD TO OWN. AS A 25-YEAR INDUSTRY VETERAN WHO PREVIOUSLY FOUNDED AND BUILT THE LARGEST CARGO TRAILER MANUFACTURER IN THE COUNTRY, STARTING BRAVO WITH A CLEAN SHEET OF PAPER WAS A DREAM COME TRUE. TOGETHER WITH THE BRAVO TEAM, THE COMPANY IS IN A UNIQUE POSITION TO TAKE THE INDUSTRY TO A HIGHER LEVEL.



## YOUR LOCAL BRAVO DEALER:



COMMERCIAL QUALITY CARGO TRAILERS

© 2014 BRAVO TRAILERS, LLC. DUE TO CONTINUOUS PRODUCT, FEATURE AND SERVICE IMPROVEMENTS; STANDARD FEATURES, OPTIONAL ACCESSORIES AND SPECIFICATIONS SUBJECT TO CHANGE WITHOUT NOTICE OR OBLIGATION. CAPACITIES ARE APPROXIMATE AND DIMENSIONS ARE NOMINAL. WEIGHT SPECIFICATIONS ARE BASED ON STANDARD MODELS AND DO NOT INCLUDE OPTIONAL EQUIPMENT. PRODUCT PHOTOGRAPHY, ILLUSTRATIONS OR CHARTS MAY SHOW EQUIPMENT AND DATA THAT IS AVAILABLE AT AN ADDITIONAL COST. BRAVO TRAILERS, LLC RESERVES THE RIGHT TO MAKE CHANGES TO PRICES AND MODELS, ALONG WITH DISCONTINUING MODELS WITHOUT NOTICE OR OBLIGATION. CONSULT YOUR AUTHORIZED BRAVO TRAILERS DEALER FOR THE MOST CURRENT INFORMATION. BRAVO IS A MEMBER IN GOOD STANDING WITH THE NATM.



# RACE TRAILERS *STEEL OR ALUMINUM*



8.5 x 26

**A HIGHER STANDARD OF PERFORMANCE**



8.5 x 48



HIGH-END MOTORSPORTS TRAILERS



**STEEL OR ALUMINUM**



**STAR RACE TRAILERS ARE A GREAT LOOKING, PREMIUM TRAILER AT A MID-RANGE PRICE. SHARING MUCH OF THE ICON'S LEGENDARY FRAME STRUCTURE, STAR'S WORKMANSHIP AND RACER-PROVEN OPTIONS MAKE IT A MOTORSPORTS TRAILER WITH THE BEST VALUE IN THE INDUSTRY. YOU DESERVE SOMETHING SPECIAL!**

**POPULAR STANDARDS** (SEE SPECS & MORE AT [BRAVOTRAILERS.COM](http://BRAVOTRAILERS.COM))

- All LED exterior lighting
- One-piece aluminum roof
- .030 aluminum exterior skin
- Tube main frame and top rail
- Tube wall posts 16" o.c.
- TPO front cap
- Anodized aluminum front corners
- Z-Tech undercoating
- Cast aluminum door hold backs
- Steel wheels with radial tires
- Dexter spring axles
- Flow-thru sidewall air vents
- 3/8" int. walls, 3/4" Advantech floor
- H/D floor trim w/recessed screws
- Zinc tongue jack with sandfoot
- 5-year limited warranty



**CAST ALUMINUM DOOR HOLD BACKS WORK GREAT AND WON'T RUST.**



**SUPERSTAR POLISHED FRONT CASTING WITH STAINLESS STEEL INSERT AND FRONT CORNERS LOOK GREAT!**



**THE SUPERSTAR PACKAGE IS A GREAT WAY TO DRESS UP YOUR BRAVO STAR TRAILER. THE PACKAGE INCLUDES POLISHED FRONT AND REAR CASTINGS, STAINLESS STEEL FRONT CORNERS AND INSERT, H/D TOP TRIM, BRIGHT ANODIZED ALUMINUM REAR END FRAMING AND YOUR CHOICE OF BLADE OR VIPER II ALUMINUM WHEELS. ASK YOUR DEALER ABOUT OUR OTHER STAR MOTORSPORT PACKAGES, AUTO HAULER, DRAFT AND SPEED-RACER.**



**STEEL OR ALUMINUM**

**ICON**

**ICON IS AN EXCEPTIONAL RACE TRAILER THAT HAS IT ALL! BETTER DESIGN, WORKMANSHIP, BEEFY TUBE FRAME AND REAL RACER-PROVEN OPTIONS MAKE ICON THE TRAILER OF ENVY. YOU CAN EXPECT AND WILL GET A STRAIGHTER, STRONGER, BETTER TOWING TRAILER THAT WON'T LET YOU DOWN.**

**POPULAR STANDARDS** (SEE SPECS & MORE AT [BRAVOTRAILERS.COM](http://BRAVOTRAILERS.COM))

- All Star standards plus:
- Spread axles with skirt
- Polished extruded fenders
- Aluminum wheels with radial tires
- Dexter torsion axles
- H/D double tube roof
- Polished castings with SS insert
- Stainless steel front corners, center section and wrapped rear end
- 3M VHB screwless exterior aluminum
- Finished interior with alum. walls
- Black coin floor and ramp door
- 48" ICON side door
- Rear ramp door with SS paddle latches and beavertail
- 4 recessed D-rings
- 2 roof vents, 2 12V dome lights
- 5-year limited warranty



**MAKE A STATEMENT AND BE PROUD OF WHAT YOU PULL! ICON TAGS RANGE FROM 20' TO 34' AND GOOSENECKS FROM 28' TO 52'.**



**STACKERS AND COACH TRAILERS ARE AVAILABLE IN BOTH STANDARD ICON FRONT END AND BULLNOSE STYLES.**

**BRAVO TRAILERS LOOK BETTER AND WORK BETTER**

**WE USE WHAT WE SELL. THE OWNER OF BRAVO TRAILERS IS A RACER HIMSELF AND HE USES THE TRAILERS JUST LIKE YOU DO. WE LISTEN TO WHAT THE RACER WANTS AND THAT LEADS TO MUCH BETTER TRAILERS AND OPTIONS.**

**ULTRA PACKAGE**

- .050 exterior aluminum
- Screwless interior walls & ceiling
- Premium base and overhead cabinets with stainless steel counter top and aluminum covered shelves
- 12V kill switch
- 4 interior recepts, 1 exterior GFI
- 50A combo load center with 60A converter, fuse panel and motorbase plug
- 4 angle-mounted 24" LED interior lights
- 2 12V LED 3" X 7" scene lights with switch
- Silver paint on frame or under riser (steel trailers)

# IF YOU DREAM IT WE CAN BUILD IT!



FINISHED INTERIORS, CUSTOM CABINETS, TOOL BOXES AND WORK SPACES ARE OUR SPECIALTY.

## CUSTOM RACE TRAILER OPTIONS

WE LOVE CUSTOM TRAILERS AT BRAVO! OUR DEDICATED DESIGN AND BUILD TEAM WILL GET YOUR TRAILER BUILT RIGHT AND ON TIME. OUR OPTIONS ARE ENGINEERED IN, NOT JUST ADDED ON. COMMERCIAL QUALITY APPLIES TO BOTH OUR TRAILERS AND OPTIONS. LET US EXCEED YOUR EXPECTATIONS.



24" LED INTERIOR LIGHTING.



TIRE RACKS, FIXED OR FOLDING.



GENERATOR PACKAGES WITH GAS TANKS.



TURN KEY RAMP SYSTEMS FOR EASY LOADING OF ANY RACE CAR.



LED SIDE BACKUP LIGHTS.



D-RINGS, AIRLINE TRACK AND RECESSED E-TRACK.



RAMP OVER WHEEL WELLS.



ALUMINUM REAR RAMP DOOR.



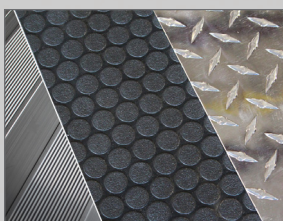
WIRED OR WIRELESS WINCHES.



DRAGSTER LOADING PACKAGE.



SWING-UP DOOR WITH REMOVABLE WHEELBOX.



EXTRUDED ALUMINUM, BLACK COIN, ATP FLOORING.

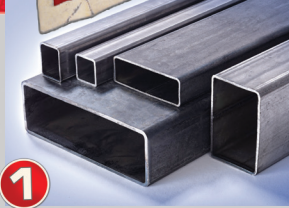
GO TO [BRAVOTRAILERS.COM](http://BRAVOTRAILERS.COM)  
FOR HUNDREDS OF OPTIONS  
AND ADDITIONAL PICTURES

VISIT US AND LIKE US ON FACEBOOK



# THE BIG 10

## REASONS BRAVO IS A BETTER TRAILER STANDARD ON ALL ALUMINUM OR STEEL MODELS



1

### TUBE FRAMES

All Bravo trailers have tube main frames that are stronger, straighter and tow better. A combination of Bravo's tube main frame, top rail and front end leads to true commercial quality trailers.



2

### PROTECTED WIRING

Bravo Trailers' in-frame wiring offers much more protection from road debris and weather. Bravo's protected wiring is the best in the industry. We will never leave you stranded.



3

### ROOF FLASHING

Roof leaks are a chronic problem in enclosed cargo trailers. A combination of roof flashing at critical joints, hi-tech roof sealant and better workmanship will help eliminate leaks.



4

### STEEL BACKERS

All exterior side wall lighting and door hold backs are mounted in a steel backer. They also act as a gusset connecting the front and rear to the side walls for a more commercial-grade frame.



5

### SEALED FLOORS

Help keep your valuable cargo dry. Our 3/4" plywood floors are fully sealed around the perimeter edges. Steel provides the backing and hi-tech sealant is used to help keep the water and dust out.



6

### PRIMER

All painted areas on Bravo trailers are prepped, primed and painted. Our better prep, primer and paint combined with all of our trailers being manufactured under one roof leads to much better, longer lasting paint.



7

### REINFORCED A-FRAME

Reinforced A frames combined with the vertical tubes in all of our front ends make Bravo trailers the strongest in the business. Reinforced A frames equal stronger, safer and longer lasting trailers.



8

### WHEEL BOX

8.5' wide trailer sidewalls include 1"x3" tubing across the top of the wheel box connected to 1"x3" tubing running vertically from the side rail to the tube top rail at the front and rear of the wheel box.



9

### REAR RAMP DOOR

All Bravo trailers with rear ramp doors have a tube connecting the rear cross member where the hinge is welded on to the nearest cross member. This reinforcement adds strength at a critical tension point.



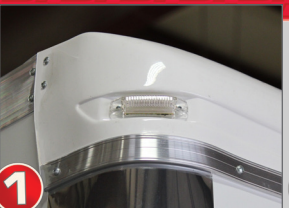
10

### SEALED SEAMS

All Bravo trailers have sealed side wall seams keeping dust and moisture out. All screwed trailers have a bead of silicone applied between the side wall aluminum sheets and screwed trailers are sealed by the 3M tape.

## FIVE MORE STANDARD BRAVO FEATURES FOR A SUPERIOR QUALITY PRODUCT!

# PLUS 5



1

### ALL EXTERIOR LED

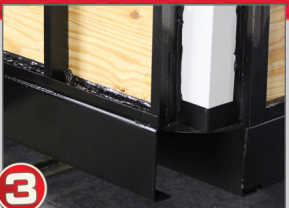
Just like commercial quality semi trailers all Bravo trailers come standard with exterior LED lighting. Not only are LED lights five times longer lasting than incandescent they are much brighter and draw less voltage. Brighter lighting makes for safer trailering!



2

### WORKMANSHIP

We are proud of the trailers we build! Please take a look at the fit and finish of our trailer versus the competitions. Look at the trim, miters, straightness of our tube frames, paint, interior finish and judge for yourself. We take the time to do it right, both inside and out.



3

### SEALED FRONT CORNERS

Enclosed cargo trailers are notorious for leaking. Bravo seals the front interior corners with aluminum and sealant so water and dust can't get inside. We also seal the plywood floor along the front of the trailer. Do you want your precious cargo to get dusty or wet?



4

### SEALED WHEEL BOXES

Our goal at Bravo is for "no leak no dust" trailers and our sealed wheel boxes are a big part of achieving that. We seal both the external and internal joints before painting to keep water and dust out. It's details like this that make Bravo the best cargo trailer on the market today!



5

### SECURE WIRING

The combination of Bravo's protected wiring and secured wiring inside the walls makes for the most reliable trailer wiring on the market today. Other manufactures simply let both the 12V and 110V wiring hang loose which can cause a safety hazard and leave you stranded.

# WHAT SETS US APART FROM THE CROWD?



## THE BRAVO COMPANY

BRAVO TRAILERS FACTORY IS THE MOST EFFICIENT IN THE INDUSTRY. OUR TRAILERS ARE BUILT UNDER ONE ROOF UTILIZING LEAN MANUFACTURING PRINCIPLES. THIS, COMBINED WITH OUR SEASONED ENGINEERING TEAM AND A SIMPLER PRODUCT LINE, WE'LL ACHIEVE OUR QUEST FOR THE BEST QUALITY AND THE BEST VALUE.



## CUSTOMER SERVICE

NO OTHER TRAILER MANUFACTURER WILL ADDRESS YOUR NEEDS AS QUICKLY OR AS FAIRLY AS BRAVO. SATISFIED CUSTOMERS ARE BRAVO'S GREATEST ASSET. WHETHER IT IS A PARTS ORDER OR WARRANTY CLAIM, WE WILL EXCEED YOUR EXPECTATIONS. WE BELIEVE TRUE VALUE COMES FROM THE OVERALL OWNERSHIP EXPERIENCE.



## ULTIMATE WARRANTY

THINGS DO GO WRONG. IF YOU EVER HAVE A WARRANTY CLAIM WE WILL ADDRESS IT QUICKLY AND FAIRLY. WE AT BRAVO TRAILERS ARE PROUD OF THE PRODUCTS WE BUILD AND WILL BACK THEM UP. A WARRANTY IS ONLY AS GOOD AS THE COMPANY STANDING BEHIND IT, ALONG WITH THE PEOPLE THAT CARE ABOUT YOUR SATISFACTION.



## BETTER PARTS

ONE OF THE CHRONIC INDUSTRY PROBLEMS IS POOR PARTS SUPPORT FROM TRAILER MANUFACTURERS. AT BRAVO TRAILERS, WE WILL KEEP IN STOCK AND SHIP YOUR PARTS TO YOU OR YOUR DEALER WITHIN 24 HOURS. OUR COMMITMENT TO THIS GOAL, ALONG WITH A MUCH SIMPLER PRODUCT LINE, WILL HELP US ACHIEVE IT. WE WILL NEVER LEAVE YOU STRANDED.



BRAVO TRAILERS LLC  
19319 COUNTY RD 8  
BRISTOL IN 46507

574 848-7500 PHONE  
888 810-7555 FREE  
574 848-7550 FAX

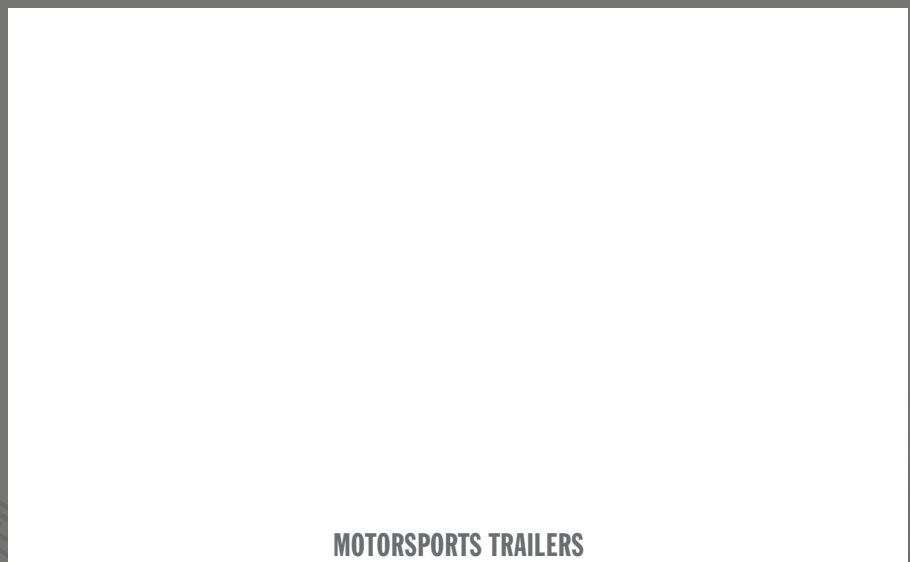
[bravotrailers.com](http://bravotrailers.com)

## WE USE WHAT WE SELL

BRAVO TRAILERS WAS FOUNDED BY MITCHELL BENDER WITH ONE GOAL IN MIND: TO BUILD A GREAT TRAILER YOU CAN BE PROUD TO OWN. AS A 25-YEAR INDUSTRY VETERAN WHO PREVIOUSLY FOUNDED AND BUILT THE LARGEST CARGO TRAILER MANUFACTURER IN THE COUNTRY, STARTING BRAVO WITH A CLEAN SHEET OF PAPER WAS A DREAM COME TRUE. TOGETHER WITH THE BRAVO TEAM, THE COMPANY IS IN A UNIQUE POSITION TO TAKE THE INDUSTRY TO A HIGHER LEVEL.



## YOUR LOCAL BRAVO DEALER:



MOTORSPORTS TRAILERS

© 2017 BRAVO TRAILERS, LLC. DUE TO CONTINUOUS PRODUCT, FEATURE AND SERVICE IMPROVEMENTS; STANDARD FEATURES, OPTIONAL ACCESSORIES AND SPECIFICATIONS SUBJECT TO CHANGE WITHOUT NOTICE OR OBLIGATION. CAPACITIES ARE APPROXIMATE AND DIMENSIONS ARE NOMINAL. WEIGHT SPECIFICATIONS ARE BASED ON STANDARD MODELS AND DO NOT INCLUDE OPTIONAL EQUIPMENT. PRODUCT PHOTOGRAPHY, ILLUSTRATIONS OR CHARTS MAY SHOW EQUIPMENT AND DATA THAT IS AVAILABLE AT AN ADDITIONAL COST. BRAVO TRAILERS, LLC RESERVES THE RIGHT TO MAKE CHANGES TO PRICES AND MODELS, ALONG WITH DISCONTINUING MODELS WITHOUT NOTICE OR OBLIGATION. CONSULT YOUR AUTHORIZED BRAVO TRAILERS DEALER FOR THE MOST CURRENT INFORMATION. BRAVO IS A MEMBER IN GOOD STANDING WITH THE NATM.

