



2019 CORNERSTONE | ANTHEM | ASPIRE | INSIGNIA

2019 LUXURY DIESEL



ENTEGRACOACH®

*enjoy the journey*





# ENTEGRA

COACH®

#WEAREENTEGRA



CORNERSTONE PG 3-6

ANTHEM PG 7-10

ASPIRE PG 11-14

INSIGNIA PG 15-18

# THE QUIETEST RIDING, BEST HANDLING COACH ON THE MARKET TODAY. PERIOD.

## HERE'S WHY:

### 1. SPARTAN® CHASSIS

With more than 30 years of custom chassis manufacturing, Spartan gives us the industry's premier foundation.

### 2. EXCLUSIVE X-BRIDGE™ FRAME

Our exclusive X-Bridge frame adds even more floor strength and structural rigidity, eliminating chassis flex and twisting; with it, the suspension—not the chassis—absorbs road shock and vibration.

### 3. FIVE-INCH-THICK FLOORS

The industry's thickest floors starts with several layers of plywood for dramatic reductions in energy transmission, noise and vibration. Cabinets are screwed directly to the wood and tile is laid precisely around them; other manufacturers place cabinets on top of the tile, causing squeaks or cracking.

### 4. RESIDENTIAL-STYLE WALLS AND ROOF

Our roof combines crowned aluminum truss rafters on 16-inch centers with Flexfoil®, fiberglass insulation and 3/8-inch plywood decking. Our walls, along with our front and rear caps, feature tucked-and-glued batting insulation—the same kind of fiberglass insulation found in sound-absorbing theater rooms.

### 5. MONOTUBE GAS PRESSURE SHOCKS

Designed specifically for luxury motorcoaches by Bilstein®, these shocks have 228% more surface area than twin-tube shocks for greater sensitivity and control. They virtually eliminate excessive sway and self-adjust so you don't have to change settings.



### 6. MICHELIN® MOTORHOME TIRES

One of the most trusted names in the business, Michelin's motorhome tires are designed for unparalleled fuel efficiency, high mileage and precise load control.

### 7. DUAL DIESEL EXHAUST FLUID (DEF) FILL PORTS

DEF fill ports on both sides of the coach for convenience (on most floorplans).

# CORNERSTONE



## STANDARDS & OPTIONS

### CHASSIS

Spartan® K3 raised rail chassis  
Cummins® X15 turbocharged 605HP engine  
1,950-lb. ft. torque at 1,200 RPM  
Allison® 4000 MH 6-speed transmission  
1,500 watt engine block heater  
Reyco® Granning® rear suspension  
Reyco Granning IFS independent 20,000-lb.  
front axle and air suspension  
Dana rear axle 20,000-lb., tag axle 14,000-lb.  
4.30 rear axle ratio  
Reyco Granning Passive Steer Tag Axle and Tag axle  
air dump  
20,000-lb. hitch with 7/4-pin plug  
Hadley® air leveling system with auxiliary air compressor  
Side-mounted radiator  
All-wheel ABS disc brakes  
Three-stage engine brake  
Automatic traction control  
Bilstein® shocks - 60MM front & 46MM on rear/tag  
150-gal. fuel tank (dual fill)  
15-gal DEF tank (dual fill)  
Michelin® 365/70R 22.5" tires (front) and  
315/80R 22.5" tires (rear)  
55-degree turning radius  
Chassis batteries 2-12 volt  
210-amp alternator  
Remote air connection  
Equalizer hydraulic automatic leveling system  
Safehaul tow air brake system  
Tire pressure monitor system

### CONSTRUCTION

X-Bridge™ frames welded into chassis frame  
Insulated, enclosed, thermostat controlled storage area  
Insulation with reflective Flexfoil® floor (R-33), roof  
(R-24), sidewalls (R-16), front and rear caps (R-22)  
2" x 4" floor truss construction  
3/4" 7-ply plywood main floor decking  
Aluma-Tru™ Superstructure construction on  
12"-16" centers  
2-1/2" exterior wall with welded tubular aluminum  
construction and high-gloss, gel-coat fiberglass  
Flush-mounted electric-powered slideout rooms with  
VegaTouch control  
One-piece fiberglass roof with 3/8" plywood decking  
and 4" arched aluminum roof truss  
Steel-reinforced front cap and windshield frame

### HEAT, A/C, WATER, AND POWER

Aqua-Hot® 450 diesel hydronic water and heating  
system with in-floor heat throughout and engine  
preheat  
15,000-BTU low profile A/Cs (3) with heat pumps  
and condensation drain system  
50-amp power cord with electric reel  
Onan® 12,500-watt diesel generator with auto gen  
start on powered slide-out tray  
3,000 watt pure sine wave inverters (2)  
L16 AGM batteries (4), (6v/390 amp hrs. ea.)  
Battery boost system  
Premium surge protector transfer switch  
Water hose with electric reel  
Black holding tank sprayer  
Sani-Con® Turbo macerator holding tank dump system  
with electric gate valves & manual back-up system  
SeeLevel™ tank monitoring system  
City and tank water filtration system  
Winterizing drain system

### EXTERIOR

Executive Bus Armor 10" stainless steel trim  
Lighted chrome clearance accent  
3M® front protective film mask  
LED high and low beam headlights  
LED fog lights  
Daytime running lights  
LED marker lights, turn lights and license plate light  
LED docking lights  
LED accent lights on underside of slideout rooms  
passenger side  
LED third brake light  
Lighted grab handle with keypad system  
Deluxe concealed entry step / Lighted Entegra step  
Girard® power entrance door awning with LED lights  
Girard Ultra window shades and slide-out awnings  
Roof mounted Girard Vision dual pitched patio awning  
w/ LED lights  
Chrome, heated, remote control, side-view  
Ramco mirrors with blind-spot indicators  
Frameless, tinted, dual-pane, Hehr safety-glass windows  
40" Samsung® LED HDTV and Bose® Solo 5 sound bar  
on TV bracket with extend, tilt and swivel arm  
Exterior utility center, heated and enclosed with  
system monitor panel  
Power Slideout cargo trays (2)  
Winegard® in-motion satellite dome with prep for  
TRAV'LER® satellite dish  
Winegard Rayzar Automatic powered TV antenna  
Power engine door with manual override  
Full-width rear mudflap, with chrome "Cornerstone"  
nameplate

### COCKPIT

Valid 15" digital dash with selector knob  
Message center and monitoring systems included in  
Valid digital dash  
Glass panel, dual 9" touchscreen in-dash infotainment  
center with Rand McNally™ RV navigation,  
Bluetooth®, Sirius™ XM, AM/FM tuner, integrated  
camera control, house mode whole coach audio  
distribution, and integrated VegaTouch coach control  
Power front sun visors and privacy shade  
6-way power, lumbar, air cooled, heated, leather driver  
and passenger seats with integrated 3-point belt  
Push button start  
Power flush stepwell cover  
Ultra-Vision® one-piece wrap-around tinted windshield  
Wood-grain, leather-wrapped, tilt and telescoping  
steering wheel with integrated controls for radio,  
cruise, and wipers  
Molded side consoles  
JBL® premium audio sound system with amplifier,  
speakers and subwoofer  
Power adjustable foot pedals  
"Total Vision" rear camera and digital side cameras  
Two dual USB ports

### INTERIOR

VegaTouch pad system, for complete integration of  
coach controls  
Dimmable LED recessed 12V lighting  
High Gloss 12" x 24" porcelain tile with granite  
inlay design  
Carpet on living area slides  
Aire-Secure™ travel locks for all pocket doors  
Power solar day and black out night shades  
Samsung® 50" HDTV  
Samsung 32" LED HDTV in front overhead  
Bose SoundTouch 300 sound system  
Blu-ray™ player in living area  
Leather hide-a-bed  
Stacked washer and dryer  
Central vacuum system  
In-step storage with pull-out tray  
LED lit fireplace (45B and 45Y)  
2 indoor/outdoor "Ollie" chairs

### KITCHEN

Quartz countertops with stainless steel sink and  
dimmable LED accent lighting  
Pullout countertop extension with drawers  
Porcelain tile backsplash with glass design inlays and  
a ceramic border  
Large deep drawer for waste basket with easy access  
trash chute (trash chute not available in 45F)

Dishwasher with wood raised panel door front  
Induction cooktop with cover  
Whirlpool® Gold 1.9 cu. ft. convection microwave oven  
Whirlpool residential refrigerator with ice maker  
and water dispenser  
Maxxair® power vent

### BEDROOM

Select Comfort® Sleep Number® king size mattress  
Nightstands with USB ports and solid surface tops  
Ceiling fan  
Large cedar-lined wardrobe with automatic lights  
(automatic light not available in 45F)  
Samsung 32" LED HDTV  
Bose Solo 5 sound bar  
Blu-ray player

### BATHROOM

Quartz countertop with integrated sink and LED  
accent lighting  
Thetford® Tecma china toilets with push button flush  
(45A, 45F, 45W)  
Porcelain tiled shower walls and floor with skylight  
and frameless glass shower door  
Teak wood shower seat (Not available in 45F)  
Maxxair Deluxe power vents

### SAFETY

Spartan Advanced Protection System equipped  
with collision mitigation, adaptive cruise control and  
electronic stability control  
Security system with glass shatter sensors  
Porch light and motion sensor security lights  
Smoke alarm  
Carbon monoxide alarm  
Safe  
Blind spot monitoring system tuned to detect objects  
within the lane of traffic on either side of the vehicle

### OPTIONS

Canadian Standards  
Leather dinette booth (45A, 45B, 45W and 45Y)  
Free standing table with 4 chairs driver side (45X)  
Theater seating with power recliners and fixed  
center console  
Winegard TRAV'LER satellite dish - DIRECTV®  
Winegard TRAV'LER satellite dish - Shaw® Direct  
Winegard WIFI Extender with 4G/LTE  
Solar panels (Dual-100 watt)  
Exterior freezer

# CORNERSTONE FLOORPLANS



45A | OPTIONS: B AND C



45B | OPTIONS: B AND D



45F | OPTIONS: C



45W | OPTIONS: B AND C

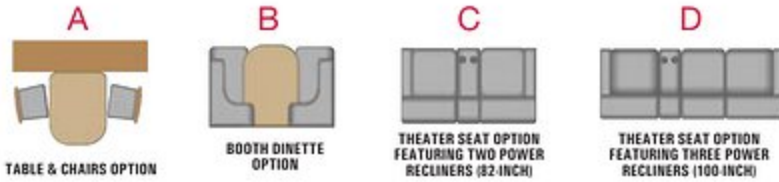


45X | OPTIONS: A AND C



45Y | OPTIONS: B AND D

## SPECS & OPTIONS



Floorplan	GVWR (lbs.)	GCWR (lbs.)	Front GAWR (lbs.)	Rear GAWR (lbs.)	Tag GAWR (lbs.)	Wheel Base	Overall Length	Exterior Height w/ A/C & Satellite	Exterior Width	Interior Height	Fresh Water Capacity (gal.)	Grey Waste Water Capacity (gal.)	Black Waste Water Capacity (gal.)
45A-45Y	54,000	74,000	20,000	20,000	14,000	320"	44' 11"	12' 11"	101"	84"	100	62	41

## CORNERSTONE INTERIORS

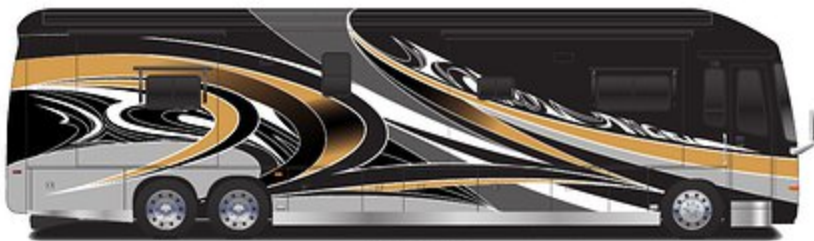


WOOD OPTIONS



Serenity (Bathroom wood only) Stonewall Grey (Cashmere décor only)

## CORNERSTONE PAINT SELECTIONS



AMBER



IMPERIAL



SUNFIRE



AZURE



PHOENIX

# ANTHEM





## STANDARDS & OPTIONS

### CHASSIS

Spartan® K2 raised rail chassis  
Cummins® L turbocharged 450 HP engine 1,250-lb. ft. torque at 1,400 RPM  
Allison® 3000 MH 6-speed transmission  
1,000 watt engine block heater  
Reyco® Granning® IFS independent 17,000-lb. front axle with air suspension  
Rear axle 20,000-lb., tag axle 12,000-lb.  
4.88 rear axle ratio  
15,000-lb. hitch with 7/4-pin plug  
Tag axle air dump  
Side-mounted radiator  
ABS disc brakes on front axle, drum brakes on drive and tag axle  
Two-stage engine brake  
Automatic traction control  
Bilstein® shocks- 60MM front & 46MM rear/tag  
150-gal. fuel tank (dual fill)  
15-gal DEF tank (dual fill)  
Michelin® 315/80R 22.5" tires (front) and 295/80R 22.5" tires (rear)  
55-degree turning radius  
Chassis batteries 2-12 volt  
170-amp alternator  
Remote air connection  
Hadley® air leveling system with auxiliary air compressor  
Equalizer hydraulic automatic leveling  
Blind spot monitoring system  
Safehaul tow air brake system  
Tire pressure monitor system

### CONSTRUCTION

X-Bridge™ frames welded into chassis frame  
Insulated, enclosed, thermostat controlled storage area  
Insulation with reflective Flexfoil® floor (R-33), roof (R-24), sidewalls (R-16), front and rear caps (R-22)  
2" x 4" floor truss construction  
3/4" 7-ply plywood main floor decking  
Aluma-Tru™ superstructure construction on 12"-16" centers  
2-1/2" exterior wall with welded tubular aluminum construction and high-gloss, gel-coat fiberglass  
Flush-mounted electric-powered slideout rooms with VegaTouch control  
One-piece fiberglass roof with 3/8" plywood decking and 4" arched aluminum roof truss  
Steel-reinforced front cap and windshield frame

### HEAT, A/C, WATER, AND POWER

Aqua-Hot® 450 diesel hydronic water and heating system with in-floor heat throughout and engine preheat  
15,000-BTU low profile A/Cs (3) with heat pumps and condensation drain system  
50-amp power cord with electric reel  
Onan® 12,500-watt diesel generator with auto gen start on powered slide-out tray  
3,000 watt pure sine wave inverters (2)  
L16 AGM batteries (4), (6v/390 amp hrs. ea.)  
Premium surge protector transfer switch  
Water hose with electric reel  
Black holding tank sprayer  
Macerator holding tank dump system with manual gate valves  
SeeLevel™ tank monitoring system  
City and tank water filtration system  
Winterizing drain system  
Battery boost system

### EXTERIOR

Premier Bus Armor 8" stainless steel trim  
Lighted, chrome clearance accent  
3M® front protective film mask  
LED high and low beam headlights  
LED fog lights  
Daytime running lights  
LED marker lights, turn lights and license plate light  
LED docking lights  
LED accent lights on underside of slideout rooms passenger side  
LED Third brake light  
Lighted grab handle with keypad system  
Girard® power entrance door awning with LED lights  
Girard Ultra window shade awning and Ultra slide-out awnings  
Roof mounted Girard Vision dual pitched patio awnings with LED lights  
Chrome, heated, remote control, Ramco side-view mirrors with blind-spot indicators  
Frameless, tinted, dual-pane, Hehr safety-glass windows  
40" Samsung® LED HDTV and Bose® Solo 5 sound bar on TV bracket with extend, tilt and swivel arm  
Exterior utility center, heated and enclosed with system monitor panel  
Manual slideout cargo tray  
Winegard® in-motion, dome, roof-mounted satellite dish with prep for TRAV'LER® satellite dish  
Winegard Rayzar automatic powered TV antenna  
Power engine door with manual override  
Full-width rear mudflap, with chrome "Anthem" nameplate

### COCKPIT

Valid 15" digital dash with selector knob  
Message center and monitoring systems included in Valid digital dash  
6-way power, lumbar, Ultraleather driver and passenger seats with integrated 3-point belt  
Push button start  
Powered flush stepwell cover  
Powered front sun visors and privacy shade  
Ultra-Vision® one-piece wrap-around tinted windshield  
Wood-grain, leather-wrapped, tilt and telescoping steering wheel with integrated controls for radio, cruise, and wipers  
Molded side consoles  
Glass panel, dual 9" touchscreen in-dash infotainment center with Rand McNally™ RV navigation, Bluetooth®, Sirius XM™, AM/FM tuner, integrated camera control, house mode whole coach audio distribution, and integrated VegaTouch coach control  
JBL® premium audio sound system with amplifier, speakers and subwoofer  
Power adjustable foot pedals  
High definition digital side and rear view cameras  
Two dual USB ports

### INTERIOR

VegaTouch pad system, for complete integration of coach controls  
Dimmable LED recessed 12V lighting  
High gloss 8" x 48" porcelain tile floor  
Carpet on living area slides  
Power solar day and black out night shades  
Samsung 50" LED HDTV  
Samsung 32" LED HDTV in front overhead  
Bose SoundTouch 300 sound system  
Blu-ray player in living area  
Ultraleather hide-a-bed(s)  
Stacked washer and dryer  
Central vacuum system  
In-step storage with pull-out tray  
LED fireplace (44B, 42DEQ)  
Aire-Secure™ travel locks for all pocket doors

### KITCHEN

Solid surface countertops with stainless steel sink and dimmable LED accent lighting  
Pullout countertop extension with drawers  
Porcelain tile backsplash with glass design inlays  
Large deep drawer for waste basket with easy access trash chute (trash chute not available in 44F)  
Dishwasher with wood raised panel door front  
Induction cooktop with cover  
Whirlpool® Gold 1.9 cu. ft. convection microwave oven  
Whirlpool residential refrigerator with ice maker and water dispenser  
Maxxair® power vent

### BEDROOM

Select Comfort® Sleep Number® king size mattress  
Nightstands with USB ports and solid surface tops  
Ceiling fan  
Large cedar-lined wardrobe with automatic lights (Automatic lights not available in 44F)  
Samsung 32" LED HDTV in bedroom  
Bose Solo 5 sound bar in bedroom  
Blu-ray player

### BATHROOM

Solid surface countertops with integrated sink and dimmable LED accent lighting  
Thetford® Tecma china toilet(s) with push button flush  
Thetford china toilets with push button flush  
Porcelain tiled shower wall with skylight  
Teak wood shower seat (Not available in 44F)  
Maxxair Deluxe power vent

### SAFETY

Security system with glass shatter sensors  
Porch light and motion sensor security lights  
Smoke alarm  
Carbon monoxide alarm  
Safe  
Blind spot monitoring system

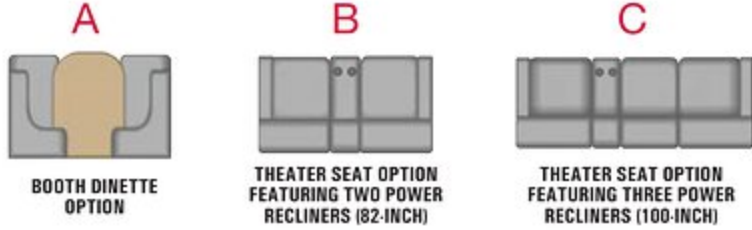
### OPTIONS

Canadian Standards  
Ultraleather dinette booth (N/A 44F)  
Theater seating with power recliners and fixed center console  
Winegard TRAV'LER satellite dish - DIRECTV  
Winegard TRAV'LER satellite dish - Shaw® Direct  
Winegard WIFI Extender with 4G/LTE  
Solar panels (Dual-100 watt)  
Exterior freezer - Dometic

# ANTHEM FLOORPLANS



## SPECS & OPTIONS



Floorplan	GVWR (lbs.)	GCWR (lbs.)	Front GAWR (lbs.)	Rear GAWR (lbs.)	Tag GAWR (lbs.)	Wheel Base	Overall Length	Exterior Height w/ A/C & Satellite	Exterior Width	Interior Height	Fresh Water Capacity (gal.)	Grey Waste Water Capacity (gal.)	Black Waste Water Capacity (gal.)
42DEQ	49,000	64,000	17,000	20,000	12,000	296"	43' 5"	12' 11"	101"	84"	100	62	41
44A, 44B, 44F, 44W	49,000	64,000	17,000	20,000	12,000	320"	44' 11"	12' 11"	101"	84"	100	62	41

## ANTHEM INTERIORS



WOOD OPTIONS



## ANTHEM PAINT SELECTIONS



JAZZ



SALSA



WALTZ



JIVE



TANGO

# ASPIRE



## STANDARDS & OPTIONS

### CHASSIS

Spartan® K2 raised rail chassis  
Cummins® L9 450 HP engine 1,250-lb. ft. torque at 1,400 RPM  
Allison® 3000 MH 6-speed transmission  
1,000 watt engine block heater  
Reyco® Granning® rear suspension  
Reyco Granning IFS independent 17,000-lb. front axle with air suspension  
Rear axle 20,000-lb., tag axle 12,000-lb. (Rear axle 24,000-lb. and no tag on 38M and 40P)  
4.88 rear axle ratio  
15,000-lb. hitch with 7/4-pin plug, (10,000-lb. hitch on 38M and 40P)  
Tag axle air dump (Not available on 38M and 40P)  
Side-mounted radiator  
ABS disc brakes on front axle, drum brakes on drive and tag axle (ABS disc brakes on front and rear axle on 38M and 40P)  
Two-stage engine brake  
Bilstein® 46mm shocks  
150-gal. fuel tank (100-gal. fuel tank on 38M and 40P) dual fill  
15 gallon DEF tank (dual fill except on 38M, 40P, 44R)  
Michelin® 315/80R 22.5" Tires (Front) 295/80 R 22.5" Tires (Rear)  
55-degree turning radius  
Chassis batteries 2-12 volt  
170-amp alternator  
Remote air connection  
Equalizer hydraulic automatic leveling  
Safehaul tow air brake system

### CONSTRUCTION

X-Bridge™ frames welded into chassis frame  
Insulated, enclosed, thermostat controlled storage area  
Insulation with reflective Flexfoil® floor (R-33), roof (R-24), sidewalls (R-16), front and rear caps (R-22)  
2" x 4" floor truss construction  
3/4" 7-ply plywood main floor decking  
Aluma-Tru™ Superstructure construction on 12"-16" centers  
2-1/2" exterior wall with welded tubular aluminum construction and high-gloss, gel-coat fiberglass  
Flush-mounted electric-powered slideout rooms with remote control  
One-piece fiberglass roof with 3/8" plywood decking and 4" arched aluminum roof truss  
Steel-reinforced front cap and windshield frame

### HEAT, A/C, WATER, AND POWER

Aqua-Hot® 400 diesel hydronic water and heating system with in-floor heat throughout  
15,000-BTU low profile A/Cs (3) with heat pump, and condensation drain system  
50-amp power cord with electric reel  
Onan® 10,000-watt diesel generator with auto gen start on slide-out tray  
Battery boost system  
3,000-watt pure sine wave inverter  
L16 AGM batteries (2), (6v/390 amp hrs. ea.)  
Surge protector transfer switch  
Water hose with electric reel  
Black holding tank sprayer  
Macerator holding tank dump system with manual gate valves  
SeeLevel™ tank monitoring system  
City and tank water filtration system  
Winterizing drain system

### EXTERIOR

3M® front protective film mask  
LED low beam headlights  
Halogen high beam headlights  
Halogen fog lights  
Daytime running lights  
LED marker lights, turn lights and license plate light  
LED docking lights  
LED accent lights on underside of slideout room passenger side  
LED Third brake light  
Lighted grab handle with keypad system  
Girard® power entrance door awning with LED lights  
Girard window shade awning and slide-out awnings  
Roof mounted Girard Vision dual pitched patio awning with LED lights  
Chrome, heated, remote control, Ramco side-view mirrors with integrated cameras  
Frameless, dual-pane, tinted, Hehr safety-glass windows  
40" Samsung® LED HDTV and JBL® Bar Studio sound bar on TV bracket with extend, tilt and swivel arm  
Exterior utility center, heated and enclosed with system monitor panel  
Winegard® In-Motion satellite dome with prep for TRAV'LER® satellite dish  
Winegard Rayzar Z1 TV antenna  
Power rear engine door with manual override  
Full-width rear mudflap, with chrome "Aspire" nameplate

### COCKPIT

Powered flush stepwell cover  
Powered front sun visors and privacy shade  
Ultra-Vision® one-piece wrap-around tinted windshield  
6-way power, lumbar Ultraleather driver and passenger seats with 3-point belt  
Push button start  
Tilt and telescoping steering wheel with integrated controls for cruise and wipers  
Molded side consoles  
Spartan Message Center with LCD display  
Dual 9" touchscreen in-dash infotainment center with Rand McNally™ RV navigation, Bluetooth®, Sirius XM™, AM/FM tuner, integrated camera control  
JBL premium audio sound system with speakers, amplifier, and subwoofer  
Powered adjustable foot pedals  
Camera system with side cameras and digital rear camera  
Two dual USB ports

### INTERIOR

Multiplex controlled lighting system  
Dimmable LED recessed 12V lighting  
High gloss 12" x 24" porcelain tile floor hand laid in a herringbone pattern  
Carpet on living area slides  
Manual solar day and black out night shades  
Aire-Secure™ travel locks for all pocket doors  
Samsung 50" LED HDTV (49" in 38M)  
Samsung 32" LED HD TV in front overhead  
Samsung sound bar with wireless subwoofer in living area  
Blu-ray™ player in living area  
Ultraleather hide-a-bed sofa(s)  
Stacked washer and dryer  
Central vacuum system  
In-step storage with pull-out tray

### KITCHEN

Solid surface countertops with stainless steel sink and dimmable LED accent lighting  
Pullout countertop extension with drawers  
Solid-surface backsplash with tile accent  
Large deep drawer for waste basket with easy access trash chute (Trash chute not available on 40P and 44R)  
Induction cooktop with cover  
Whirlpool® 1.9 cu. ft. convection microwave oven  
Whirlpool residential refrigerator with ice maker and water dispenser  
Maxxair® power vent

### BEDROOM

King size gel memory foam mattress  
Nightstands with USB ports and solid surface tops  
Samsung 32" LED HDTV  
JBL Bar Studio sound bar  
Blu-Ray Player  
Ceiling fan  
Automatic lights in wardrobe

### BATHROOM

Solid surface countertops with integrated sink and LED accent lighting  
Thetford® Tecma china toilets  
Marble patterned shower with skylight and clear glass shower door  
Maxxair Deluxe power vent

### SAFETY

Security system with glass shatter sensors  
Porch light and motion sensor security lights  
Smoke alarm  
Carbon monoxide alarm  
Safe

### OPTIONS

Canadian Standards  
LED lit fireplace (38M, 44B and 42DEQ)  
Dishwasher drawer  
Theater seating with power recliner  
Winegard TRAV'LER satellite dish - DIRECTV  
Winegard TRAV'LER satellite dish - Shaw® Direct  
Solar panels  
Slideout storage tray  
Second Girard patio awning  
Winegard WIFI Extender with 4G/LTE  
Batteries - 2 additional AGM, 4 total (Not available on 38M and 40P)

# ASPIRE FLOORPLANS



38M | OPTIONS: A AND B



40P | OPTIONS: A AND B AND D



42DEQ | OPTIONS: A AND C



44B | OPTIONS: A AND C

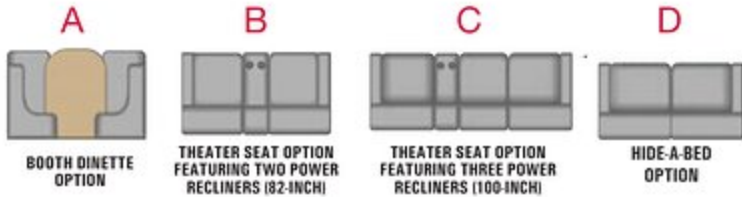


44R | OPTIONS: B



44W | OPTIONS: A AND B

## SPECS & OPTIONS



Floorplan	GVWR (lbs.)	GCWR (lbs.)	Front GAWR (lbs.)	Rear GAWR (lbs.)	Tag GAWR (lbs.)	Wheel Base	Overall Length	Exterior Height w/ A/C & Satellite	Exterior Width	Interior Height	Fresh Water Capacity (gal.)	Grey Waste Water Capacity (gal.)	Black Waste Water Capacity (gal.)
38M-40P	41,000	51,000	17,000	24,000	N/A	261"	40' 11"	12' 11"	101"	84"	100	62	41
42DEQ	49,000	64,000	17,000	20,000	12,000	296"	43' 5"	12' 11"	101"	84"	100	62	41
44B, 44R, 44W	49,000	64,000	17,000	20,000	12,000	320"	44' 11"	12' 11"	101"	84"	100	62	41

## ASPIRE INTERIORS



### WOOD OPTIONS



## ASPIRE PAINT SELECTIONS



GOLDEN ROD



MARIGOLD



TIGER LILLY



IRIS



POPPY

# INSIGNIA





## STANDARDS & OPTIONS

### CHASSIS

Spartan® K2 raised rail chassis  
Cummins® L9 turbocharged 450 HP engine  
1,250-lb. ft. torque at 1,400 RPM (Larger than 40') /  
Cummins® L turbocharged 380 HP engine  
1,150-lb. ft. torque at 1,400 RPM (40' and under)  
Allison® 3000 MH 6-speed transmission  
1,000 watt engine block heater  
Reyco® Granning® front and rear suspension  
Front axle I-beam 16,000-lb. wide track  
Rear axle 20,000-lb., tag axle 12,000-lb. (Larger than  
40') / Rear axles 24,000-lb. (40' and under)  
4.88 rear axle ratio (Larger than 40') / 4.78 rear axle  
ratio (Less than 40')  
15,000-lb. hitch with 7/4-pin plug (Larger than 40') /  
10,000-lb. hitch with 7/4-pin plug (40' and under)  
Tag axle air dump (Larger than 40')  
Side-mounted radiator  
ABS disc brakes on front axle, drum brakes on drive  
and tag axle (Larger than 40') / ABS disc brakes on  
front and rear axle (40' and under)  
Two-stage engine brake  
Bilstein® 46mm shocks  
100-gal. fuel tank (dual fill)  
15 gallon DEF tank (dual fill 44B & 44W) / 15 gallon  
DEF tank (passenger side fill) (Less than 40')  
Michelin® 295/80R 22.5" Tires (Front) 275/80 R 22.5"  
Tires (Rear)  
52 degree turning radius  
Chassis batteries (2) 12 volt  
170-amp alternator  
Remote air connection  
Equalizer hydraulic automatic leveling  
Safehaul tow air brake system (Larger than 40')

### CONSTRUCTION

X-Bridge™ frames welded into chassis frame  
Insulated, enclosed, thermostat controlled  
storage area  
Insulation with reflective Flexfoil® floor (R-33), roof  
(R-24), sidewalls (R-16), front and rear caps (R-22)  
2" x 4" floor truss construction  
3/4" 7-ply plywood main floor decking  
Aluma-Tru™ Superstructure construction on  
12"-16" centers  
2-1/2" exterior wall with welded tubular aluminum  
construction and high-gloss, gel-coat fiberglass  
Flush-mounted electric-powered slideout rooms with  
remote control  
One-piece fiberglass roof with 3/8" plywood decking  
and 4" arched aluminum roof truss  
Steel-reinforced front cap and windshield frame

### HEAT, A/C, WATER, AND POWER

50-gal. propane gas tank  
Aqua-Hot® 400-LP hydronic water and heating system  
with in-floor heat throughout (Larger than 40') /  
Aqua-Hot 250-LP (40' and under)  
15,000 BTU low profile A/Cs with heat pump, digital  
thermostat, and roof to ground condensation drain  
system (3 units in coaches over 40' and 2 units in  
coaches under 40')  
50-amp power cord with electric reel  
Onan® 10,000-watt diesel generator with auto gen  
start on slide-out tray  
3,000-watt pure sine wave inverter  
L16 AGM batteries (2), (6v/390 amp hrs. ea.)  
Battery boost system  
Surge protector transfer switch  
Black holding tank sprayer  
Macerator holding tank dump system with manual  
gate valves  
SeeLevel™ tank monitoring system  
City and tank water filtration system  
Winterizing drain system

### EXTERIOR

3M® front protective film mask  
Halogen high and low beam headlights  
Halogen fog lights  
Daytime running lights  
LED marker lights, turn lights and license plate light  
LED docking lights  
LED accent lights on underside of slideout rooms -  
Passenger side  
LED third brake light  
Lighted grab handle with keypad system  
Girard® power entrance door awning with LED lights  
Carefree® window shade and slide-out awnings  
Girard Ultra power patio awning with LED lights  
Heated, remote control, Ramco side-view mirrors with  
integrated cameras  
Frameless, dual-pane, tinted, Hehr safety-glass windows  
Exterior 39" Insignia™ LED HDTV and Insignia sound  
bar on TV bracket with extend, tilt and swivel arm  
Exterior utility center, heated and enclosed with  
system monitor panel  
Winegard® In-Motion satellite dome with prep for  
TRAV'LER satellite dish  
Winegard Rayzar Z1 TV antenna  
Full-width rear mudflap, with chrome "Insignia"  
nameplate

### COCKPIT

Powered flush stepwell cover  
Powered front sun visors and privacy shade  
Ultra-Vision® one-piece wrap-around tinted windshield  
Power adjustable driver and passenger seats with  
integrated 3-point lap and shoulder safety belts  
Push Button Start  
Tilt and telescoping steering wheel with integrated  
controls for cruise and wipers  
Spartan Message Center with LCD display  
9" touchscreen in-dash infotainment center with  
Rand McNally™ RV navigation, Bluetooth®, Sirius  
XM™, AM/FM tuner, integrated camera control  
JBL® premium audio sound system (Larger than 40')/  
JBL speakers (40' and under)  
Powered adjustable foot pedals  
Side and rear view cameras  
Two dual USB ports

### INTERIOR

Multiplex controlled lighting system  
Dimmable LED recessed 12V lighting  
Hand laid high gloss 12" x 24" porcelain tile floor  
Manual solar day and black out night shades  
Insignia 50" LED HDTV  
Insignia sound bar in living room  
Aire-Secure™ travel locks for all pocket doors  
Blu-ray® player in living area  
Stacked washer and dryer  
Ultraleather hide-a-bed sofa  
Carpet on living area slides

### KITCHEN

Solid surface countertops with stainless steel sink and  
LED accent lighting  
Large deep drawer for waste basket with easy access  
trash chute (Trash chute N/A in 37MB, 40B2, 40BH  
& 44R)  
Induction cooktop with cover  
Whirlpool® Gold 1.9 cu. ft. convection microwave oven  
Whirlpool residential refrigerator with ice maker and  
water dispenser  
Maxxair® power vent

### BEDROOM

Nightstands with USB ports and solid surface tops  
Insignia 32" LED HDTV in bedroom  
Insignia 39" LED HDTV in bedroom (37MB)  
Ceiling fan

### BATHROOM

Solid surface countertop(s) with integrated sink and  
LED accent lighting  
Thetford® Tecma china toilets (Larger than 40')  
Thetford Aqua-Magic china toilet with foot flush  
(40' and under)  
One-piece fiberglass shower with skylight  
Maxxair power vent

### SAFETY

Porch light and security lights  
Smoke alarm  
Carbon monoxide alarm  
Propane alarm

### OPTIONS

Canadian standards  
Dinette booth (40B2, 40BH, 44B & 44W)  
Theater seating w/power recliners and fixed  
center console  
Front overhead TV  
Winegard TRAV'LER satellite dish - DIRECTV  
Winegard TRAV'LER satellite dish - Shaw® Direct  
Winegard WIFI Extender with 4G/LTE  
Slideout storage tray  
Central vacuum system  
Batteries - 2 additional AGM, 4 total (N/A on 40B2)  
LED lit Fireplace (37MB & 44B)

# INSIGNIA FLOORPLANS



37MB | OPTION: B



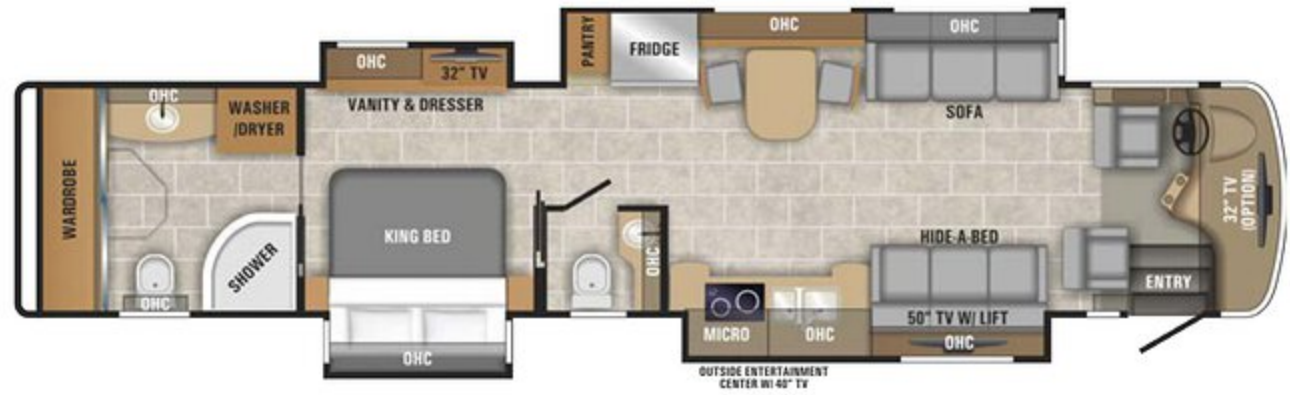
40B2 | OPTIONS: A AND B AND D



44B | OPTIONS: A AND C

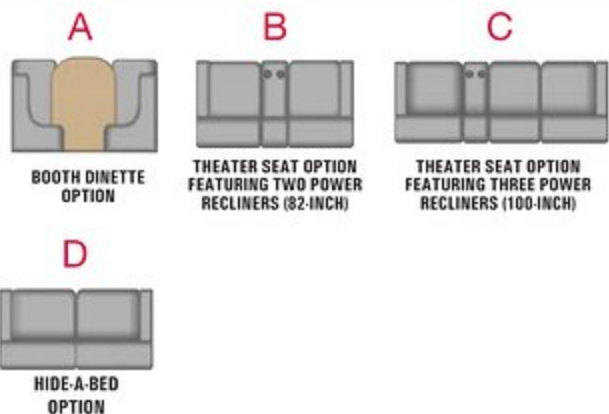


44R | OPTION: B



44W | OPTIONS: A AND B

## SPECS & OPTIONS



Floorplan	GVWR (lbs.)	GCWR (lbs.)	Front GAWR (lbs.)	Rear GAWR (lbs.)	Tag GAWR (lbs.)	Wheel Base	Overall Length	Exterior Height w/ A/C & Satellite	Exterior Width	Interior Height	Fresh Water Capacity (gal.)	Grey Waste Water Capacity (gal.)	Black Waste Water Capacity (gal.)
37MB	40,000	50,000	16,000	24,000	N/A	228"	38' 2"	12' 11"	101"	84"	100	62	41
40B2	40,000	50,000	16,000	24,000	N/A	261"	40' 11"	12' 11"	101"	84"	100	62	41
44B, 44R, 44W	48,000	63,000	16,000	20,000	12,000	320"	44' 11"	12' 11"	101"	84"	100	62	41

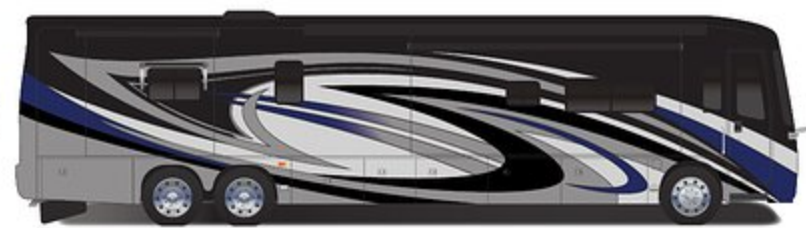
## INSIGNIA INTERIORS



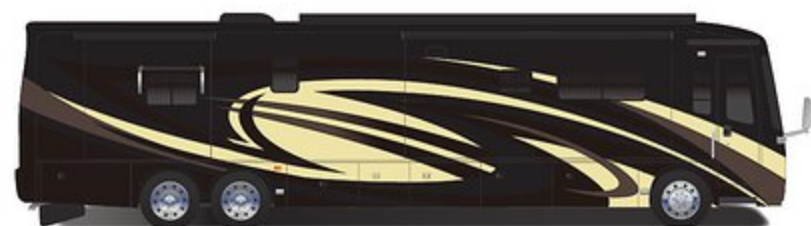
## INSIGNIA PAINT SELECTIONS



AUTUMN BERRY



MOONLIT BEACH



POLISHED PEARL



TOPAZ



**ENTEGRACOACH, INC., P.O. BOX 460, MIDDLEBURY, IN 46540**

**WWW.ENTEGRACOACH.COM**

Gross Vehicle Weight Rating (GVWR): The maximum permissible weight of the motorcoach, including the Unloaded Vehicle Weight (UVW) plus passengers, personal items, all cargo, fluids, options and dealer-installed accessories. The GVWR is equal to or greater than the sum of the UVW and the Cargo Carrying Capacity. Gross Axle Weight Rating (GAWR): The maximum allowable weight each axle assembly is designed to carry, as measured at the tires, therefore including the weight of the axle assembly itself. Gross Combined Weight Rating (GCWR): The maximum allowable combined weight of the motorcoach used as a tow vehicle and the attached towed vehicle.

Entegra Coach, Inc. | P.O. Box 460 | Middlebury, IN 46540 See dealer for further information and prices. All information in this brochure and on [www.entegracoach.com](http://www.entegracoach.com) is the latest available at the time of publication approval. Entegra Coach reserves the right to make changes and to discontinue models without notice or obligation. Photography may show optional equipment or props used for decoration purposes only. RVs built for sale in Canada may differ to conform to Canadian codes. ENTEGRACOACH, JAYCO and the JAYCO BIRD IN FLIGHT are registered trademarks of Jayco, Inc. Printed in U.S.A. 27K 07/18 © 2018 Entegra Coach, Inc. 274887

