

# STELLAR

## Toyhaulers

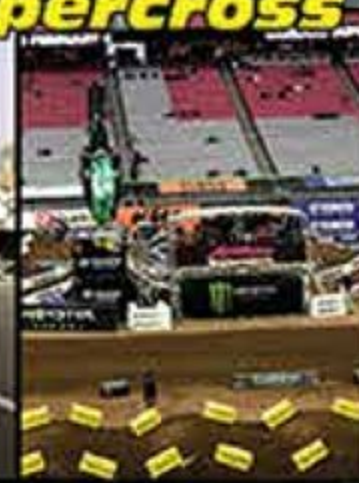


**ECLIPSE**  
RECREATIONAL VEHICLES, INC.



# Events

## MONSTER ENERGY Supercross



## PROLINE WRAPS .COM



## MONSTER JAM MonsterJam



## UTV World Championship



## MAD MEDIA



## Camp RZR



## Doonies

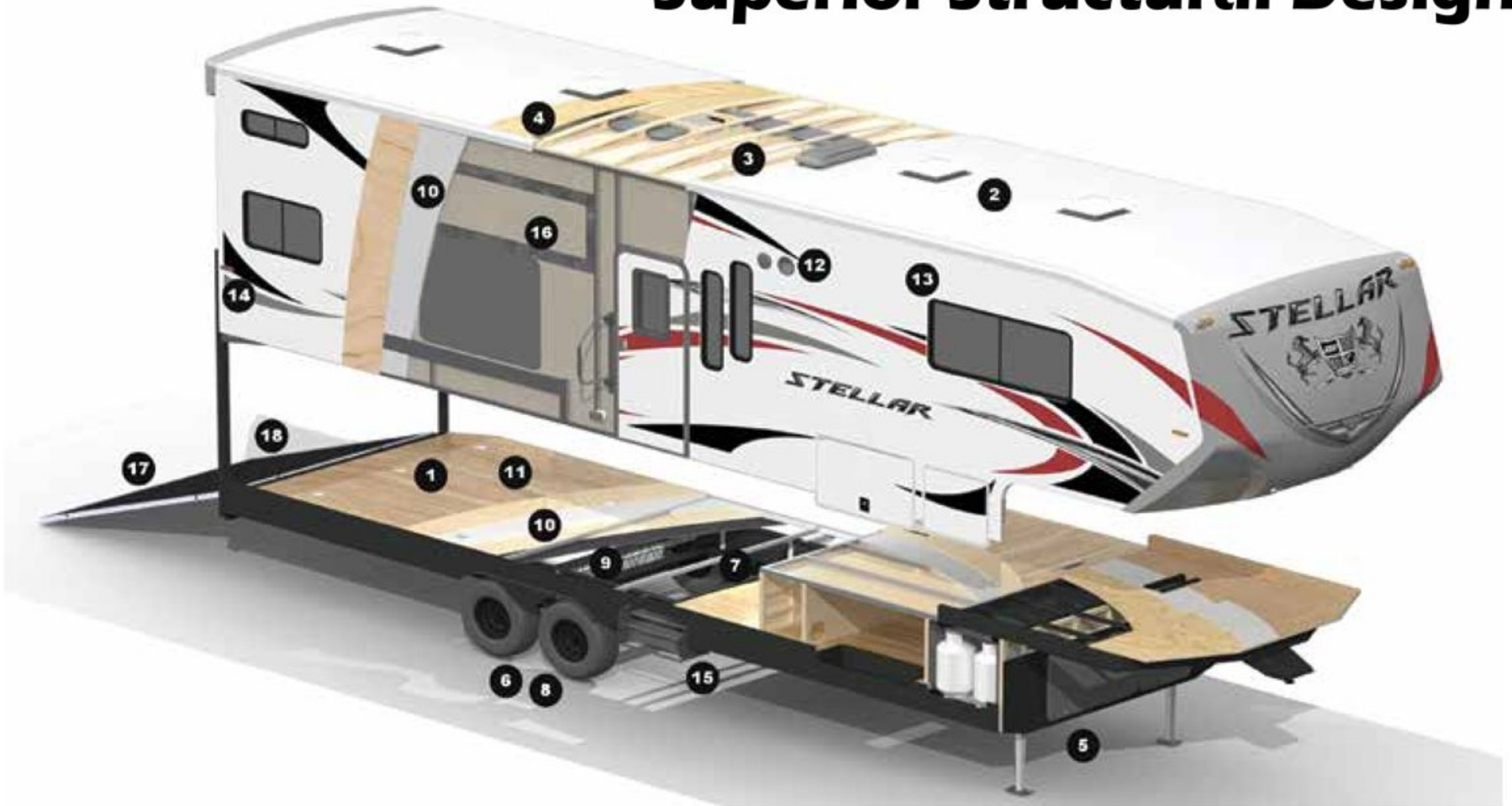


## Make a Wish





# Superior Structural Design

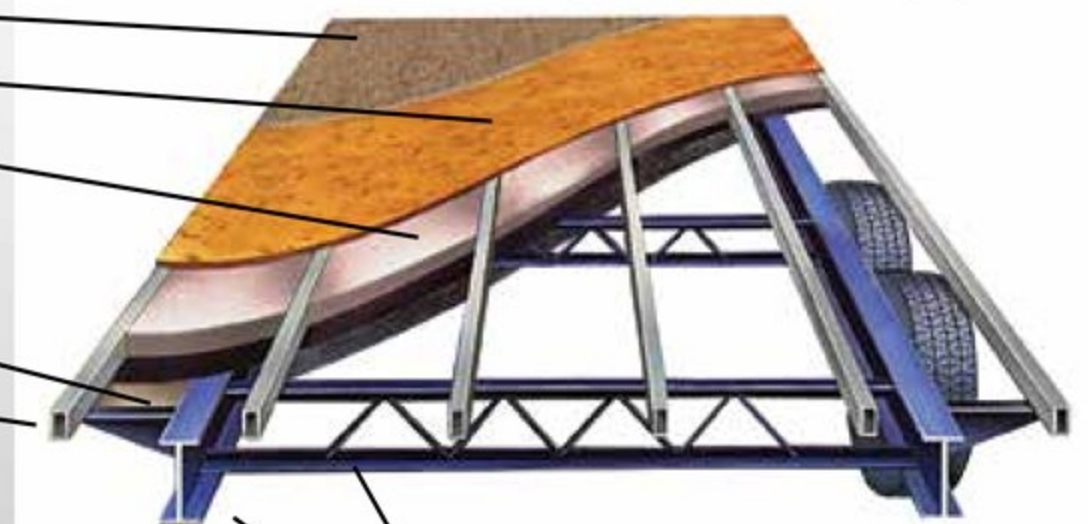


1. 2,500 lbs. Tie-Downs Mounted to Steel
2. Seamless One Piece TPO Roof
3. 5" Roof Trusses
4. Fully Decked Walk-on Roof
5. Wide Stance Chassis
6. Wide Track Axles
7. 12x2" Self Adjust Brakes w/ 7,000 lbs. Stopping Capacity per Axle
8. Tru-Offroad Lubeable Suspension
9. Hi Clearance Offroad Holding Tanks

10. Hi-Density Block Foam - R11 Insulation
11. 2 1/4" Ultra Strong Bonded Floor
12. Hi-Rez LED Flood Lights
13. Extra Large Tinted Windows
14. LED Running Lights
15. Radius Entry Steps
16. Lumber Core Screwed Cabinets with Steel Backing
17. 3,000 lbs. Ramp Door - Rhino Lined
18. Ramp Patio Ready

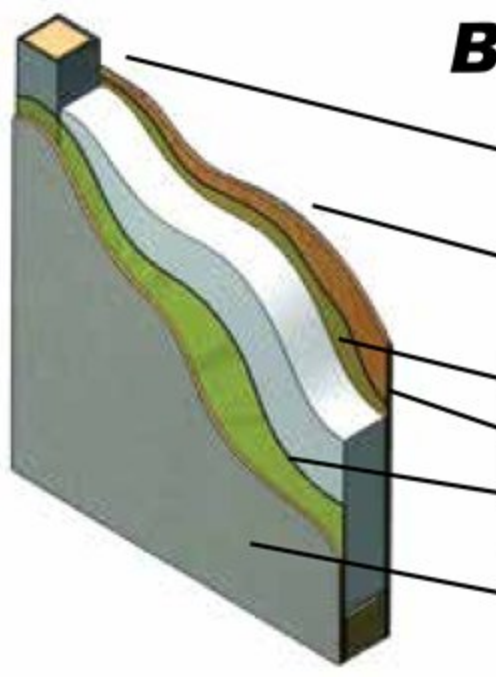
## Bonded Floor

- Residential Grade Linoleum
- 1/2" Marine Grade Plywood Decking
- High Density EPS Foam Installation
- Quality Adhesive Developed Specifically for Vacuum Bonded Process
- Luan Under-Decking Covered w/ Underbelly
- 1.5 x 1.5 Welded Aluminum Tube Framing Filled with Lumber for Better Screw Retention



Heavy Duty Truss Chassis Supports I-Beam Chassis

## Bonded Wall



- 1.5 x 1.5 Welded Aluminum Tube Filled with Lumber for Better Screw Retention
- Lamilux Exterior Paneling High Gloss Gel Coated Fiberglass Surface Bonded to Luan Backing
- High Density EPS Foam Insulation
- Quality Adhesive Developed Specifically for Lamination Process
- Vinyl Covered Luan

\* Bonded Walls and Floors on all Fiberglass Coaches



# Limited Edition



## Standard Features - Exterior

- 6,000 LB Axles w/ Zerk Fittings and Self-Adjusting Brakes
- Awning
- Corrugated Thermal Gray Siding (19SB-LE & 21FS-LE ONLY)
- Fiberglass Sidewalls - Aluminum Framed (Laminated) (19SBG-LE & 21FSG-LE ONLY)
- Decked Walk-on Roof
- Floor - 3" Frame
- Front Laminated Fiberglass
- Fuel Station - 40 Gallon
- HD Digital Antenna w/ Park Cable Hookup
- Hi Def 3M Graphics
- Hi Rez LED Flood Lights
- LP - Dual 20 Lbs w/ LP Cover
- Powder Coated Chassis w/ Double Radius Entry Step
- Propane Stub for Quick Connect
- Ramp Door - 7' (3,000 Lbs Rating)
- Spare Tire w/ Carrier
- Stabilizer Jacks - Rear
- Steel Wheels - Mod Black 15"
- Tank Capacities - 100 Fresh, 50 Gray, 50 Black
- Windows - Extra Large Tinted

## Standard Features - Interior

- 30 AMP Service
- A/C Living Room - 13.5K BTU (Ducted - 21FS-LE & 21FSG-LE)
- Drive-on Wheel Box
- Furnace - 18K BTU (Ducted on 21FS-LE & 21FSG-LE)
- I-Beam Chassis w/ Z-Style Outriggers
- Interior LED Lighting w/ Dimmer
- Stereo - AM/FM/BT w/ Exterior Speakers
- Lumber Core Screwed Cabinets
- Microwave - Range Hood - Range/Oven
- Mini-Blinds
- Porcelain Toilet
- Rapid Charge Converter
- Refrigerator - Large Double Door
- Skylight Over Shower (21FS-LE & 21FSG-LE ONLY)
- Single Bowl Galley Sink w/ Pull-out Faucet
- Tie Downs - 2,500 Lbs Rating
- Top Stitch Deluxe Furniture
- Water Heater - 6 Gal DSI (Quick Recovery)





# STELLAR



## Interior Colors:

- Charcoal w/ Platinum Birch Wood

## Hi Def Exterior Graphics

- Gray

## Optional Upgrades

- 2 Chairs IPO Sofa
- CSA Canada
- Electric Bed w/ Ladder
- Generator - 3.5K Portable
- Power Tongue Jack
- Ramp Door Cable Kit
- Scarlett Furniture Trim
- Solar Panel - 160 Watt
- Stabilizer Jacks - Front
- TV - Living Room (28" Class)
- Winterize

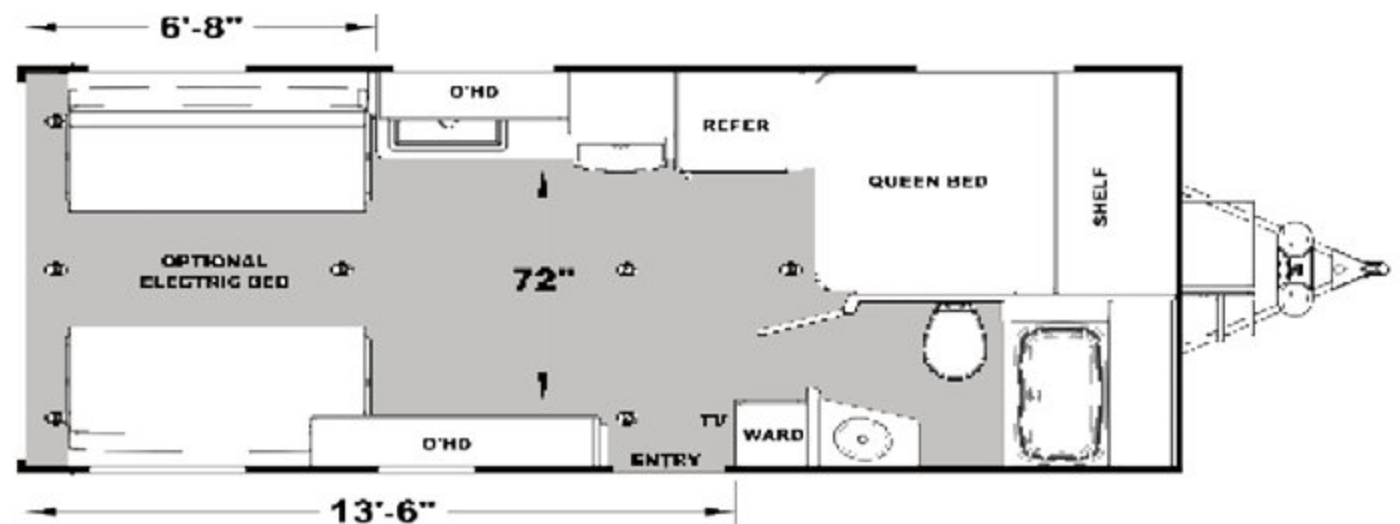
## Limited Package Includes:

- Electric Awning - DVD - Black Tank Flush
- 12V USB Charger

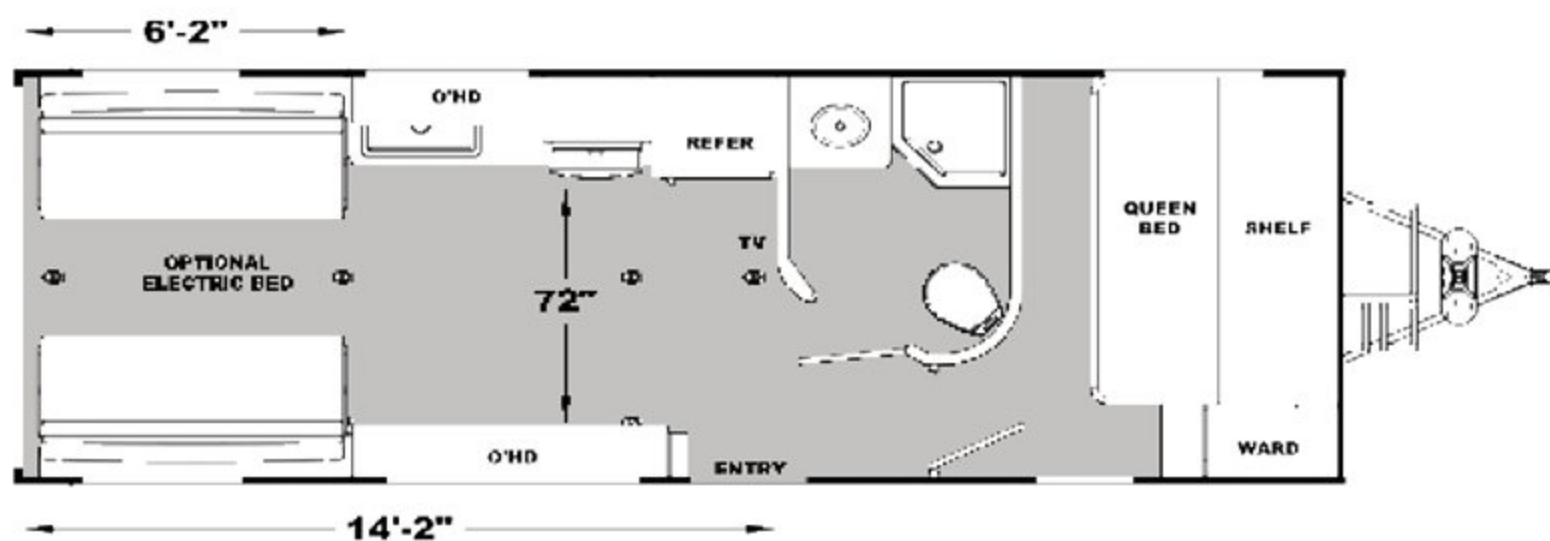
## Stellar Limited Models:

- 19SB-LE
- 19SBG-LE
- 21FS-LE
- 21FSG-LE

# 19SBLE



# 21FSLE





# Prolite



## Standard Features - Exterior

- 6,000 LB Axles w/ Zerk Fittings and Self-Adjusting Brakes
- Corrugated Thermal Gray Siding
- Decked Walk-on Roof
- Electric Awning w/ LED Light
- Exterior LED Light Bar
- Exterior Shower
- Floor - 3" Framed
- Front & Rear Laminated Gray Fiberglass
- Fuel Station - 40 Gallon
- HD Digital Antenna w/ Park Cable Hookup
- Hi Def 3M Graphics
- Hi Rez LED Lights - Running, Flood (DS-2, Rear-2)
- Lights - Hitch, Porch, and Step
- LP - Dual 20 Lbs w/ LP Cover
- Powder Coated Chassis w/ Double Radius Entry Step
- Ramp Door w/ Cables - 7' (3,000 lbs Rating)
- Spare Tire w/ Carrier
- Stabilizer Jacks - Front & Rear
- Steel Wheels - Mod Black 15"
- Swing-away Entry Door Assist Handle
- Tank Capacities - 100 Fresh, 50 Gray, 50 Black w/ Tank Flush

## Standard Features - Interior

- 2 Chairs w/ Bay Window
- 30 AMP Service
- A/C Living Room - 13/5K BTU Ducted (Not Ducted on 23SB)
- Drive-on Metal Wheel Well (3,000 # Rating)
- Electric Bed w/ Single Lounge and Ladder (Lounge N/A 23FIB)
- Furnace - 18K BTU Ducted (Not Ducted on 23SB)
- Glass Enclosed Shower (23FIB, 27FS ONLY)
- I-Beam Chassis w/ Z-Style Outriggers
- Interior LED Lights w/ Dimmer
- Lumber Core Screwed Cabinets
- Medicine Cabinet
- Microwave - Range Hood - Range/Oven
- Pillowtop Mattress w/ Bedspread
- Pleated Shades
- Porcelain Toilet
- Rapid Charge Converter
- Refrigerator - Large Double Door
- Solid Surface Galley Top - Drop Range w/ Glass Cover
- SS Single Bowl Galley Sink w/ Pull-out Faucet
- Stereo - AM/FM/BT/DVD w/ Exterior Speakers
- Top Stitch Deluxe Furniture
- USB Chargers - 12V (One in Galley & One in Bedroom)
- Water Heater - 6 Gal DSI (Quick Recovery)





# STELLAR



25FB



27FS

## Interior Colors:

- Charcoal w/ Platinum Birch Wood
- Diamond w/ Skybrush Wood

## Hi Def Exterior Graphics

- Red, Gray

## Optional Upgrades

- A/C Living Room - 15K BTU
- Aluminum Wheels - Deluxe 15" Black
- Black Aluminum Fender Skirts
- CSA Canada
- Electric Bed / Dinette (Bottom Bunk) (N/A 23FIB)
- Enclosed Tanks - Heated
- Folding Dinette IPO Chairs
- Folding Roof Ladder
- Generator - 3.5K Portable (23FB Only)
- Generator - 4.0K Onan w/ Transfer Switch (N/A w/ 3.5 Gen)
- Living Room Slideout - Roadside (25FB & 27FS Only)
- LP - Dual 30 Lbs
- Power Tongue Jack
- Rear Screen Wall
- Scarlett Furniture Trim
- Skylight Over Shower (N/A 23SB)
- Solar Panel - 160 Watt
- Stainless Steel Appliances
- TV - Living Room (28" Class)
- Winterize

## Glass package (Gray) Includes:

- Fiberglass Sidewalls - Aluminum Framed (Laminated)
- Ultra Strong Bonded Floor

## Stellar Pro Lite Models

- 23SB
- 23FIB
- 25FB
- 27FS

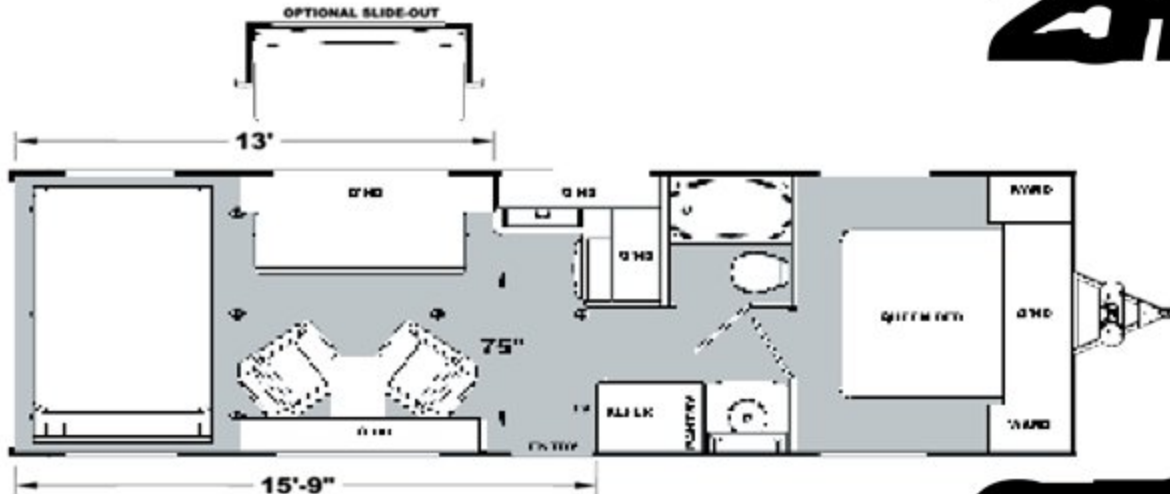
23SB



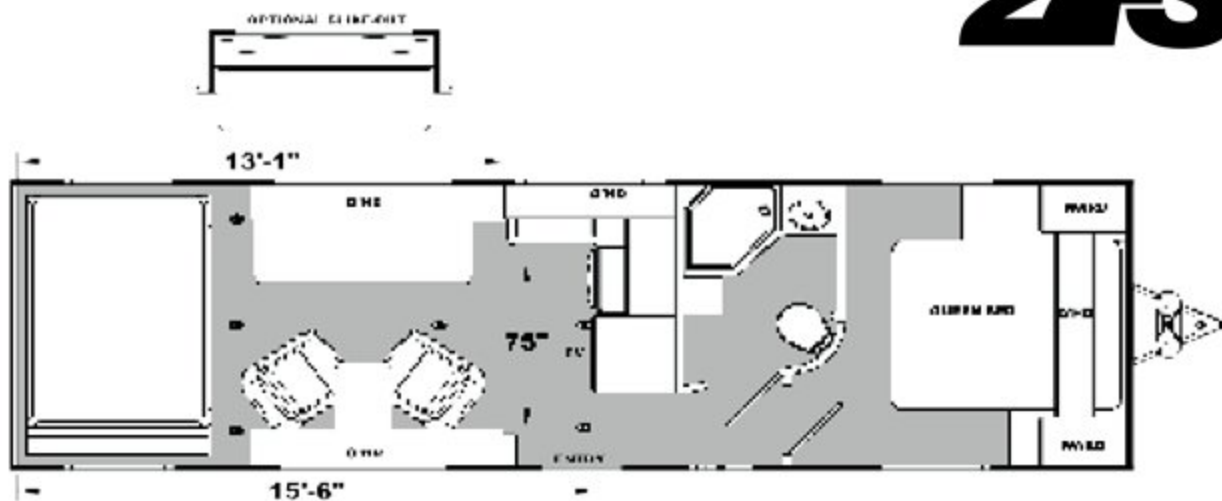
23FB



23IB



27S





# Widelite



## Standard Features - Exterior

- 6,000 LB Axles w/ Zerk Fittings and Self-Adjusting Brakes (7,000 LB Axles on FW) (8,000 LB Axles on 32DBG)
- Aluminum Wheels - Deluxe 15" Black (16" on 28IBLG) (Deluxe 16" Black w/ G-Rated Tires on FW)
- Black Aluminum Fender Skirts
- Curbside Under Glow LED Lighting
- Decked Walk-on Roof
- Electric Awning w/ LED Light
- Exterior Shower
- Fuel Station - 40 Gallon
- Generator 4.0K Onan w/ Transfer Switch
- Gray Fiberglass Caps - Front (w/ LED)
- Gray Fiberglass Sidewalls - Aluminum Framed (Laminated)
- HD Digital Antenna w/ Park Cable Hookup
- Hi Rez LED Lights - Running, Light Bar, Flood (DS-2, Rear-2)
- LP - Dual 30 Lbs (w/ Custom LP Cover on TT's)
- Powder Coated Chassis w/ Dbl Rad Entry Step (Triple on FW)
- Power Tongue Jack on TT's
- Ramp Door w/ Cables - 7' (7.5' on FW) - 3,000 Lbs Rating
- Ramp Door Cable Kit
- Spare Tire w/ Carrier
- Stabilizer Jacks - 4 (High Clearance) (2-Rear on FW)
- Swing-away Entry Door Assist Handle
- Tank Capacities - 150 Fresh, 50 Gray, 50 Black w/ Tank Flush
- Ultra Strong Bonded Floor

## Standard Features - Interior

- 2 Chairs with Bay Window
- 30 AMP Service
- A/C Living Room - 15K BTU Ducted
- Drive-on Metal Wheel Well (3,000# Rating) (28IBG & 32IBG Only)
- Electric Bed / Dinette (Bottom Bunk) and Ladder
- Furnace - 30K BTU Ducted
- Glass Enclosed Shower w/ Skylight
- LED Lights w/ Dimmer
- Lighted Solid Surface Galley Top - Drop Range w/ Glass Cover
- Microwave w/ Built-in Range Hood - Range/Oven
- Pillowtop Mattress w/ Bedspread and Shams
- Pleated Shades
- Refrigerator - Large Double Door (28DBG, 32DBG, TT Only)
- Refrigerator - Side-by-Side (28SKS & 30SKS Only)
- Stainless Steel Single Bowl Galley Sink w/ Pull-out Faucet & Water Filter
- Stereo - AM/FM/CD/DVD/BT w/ App-Controls and Ext Speakers
- TV - Living Room (32" Class) (50" Class on 28KSG, 28SKS, 32KSG) (50" & 32" Class on 30KSG, 30SKS)
- USB Chargers - 12V (One by Electric Bed & One in Bedroom)
- Water Heater - 6 Gal DSI (Quick Recovery)

## Optional Upgrades

- 2nd A/C Bedroom - 13.5K BTU (Req's 5.5 Gen Opt)
- 6-Point Electric Auto-Leveling (FW Only)
- Aluminum Wheels - Deluxe 16" (32IBG Only)
- Ceiling Fan - 12V
- CSA Canada
- Enclosed Tanks - Heated
- Fantastic Fan in Bathroom
- Folding Dinette IPO Chairs (N/A 28KSG, 30KSG, 32KSG, 28SKS, 30SKS)
- Folding Roof Ladder
- Generator - 5.5K Onan w/ Transfer Switch & 50AMP
- Inverter - 1800 Watt
- Kicker Stereo System w/ App Controls
- Living Room Slideout - Roadside (STD 28KSG, 30KSG, 32KSG, 28SKS, 30SKS)
- MorRyde Ramp Patio Fence
- MorRyde Ramp Patio Steps
- Rear Screen Wall
- Refrigerator - XL Double Door (N/A 28SKS, 30SKS)
- Roadside Hi Rez LED Flood Lights (2)
- Scarlett Furniture Trim
- Solar Panel - 160 Watt
- Stainless Steel Appliances
- TV - Bedroom (28" Class)
- Wardrobe Slideout
- Water Heater - 10 Gal DSI/Electric
- White Countertops (STD w/ Diamond Interior)
- Windows - Frameless
- Winterize

## Interior Colors

- Charcoal w/ Platinum Birch Wood
- Diamond w/ Skybrush Wood

## Hi Def Exterior Graphics

- Red, Gray

## Centurion Package Includes:

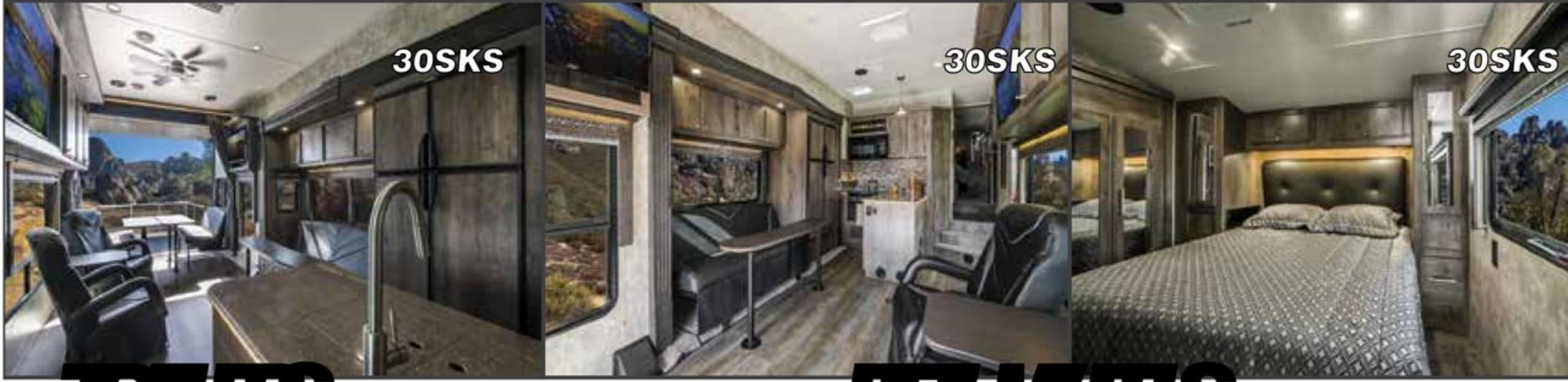
- Solid Surface Lavy Top w/ Glass Bowl & Deluxe Faucet

## Stellar Widelite Models:

- 28IBLG (TT)
- 32IBLG (TT)
- 28DBG (5W)
- 32DBG (5W)
- 28KSG (TT)
- 32KSG (TT)
- 28SKS (5W)
- 30SKS (5W)
- 30KSG (TT)



# STELLAR



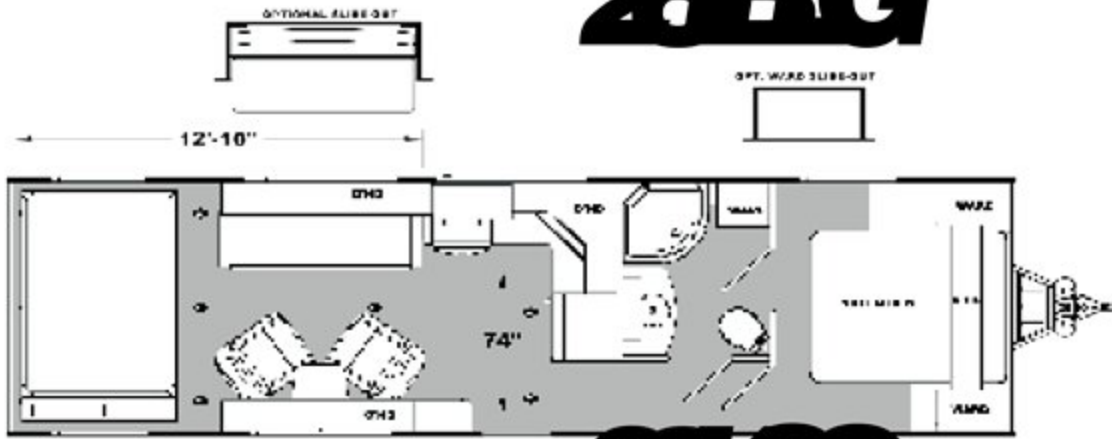
30SKS

30SKS

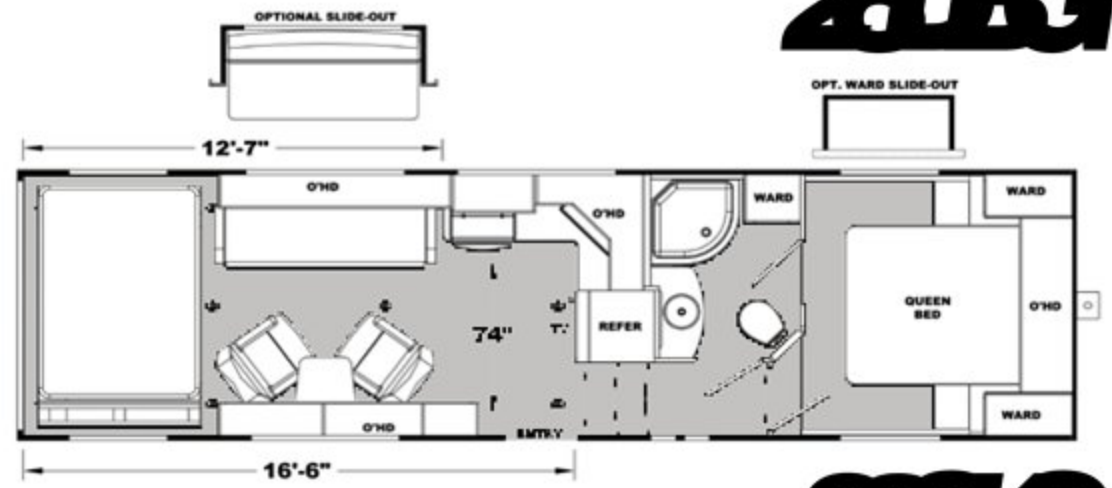
30SKS

**FAHBS**

**FAHBS**



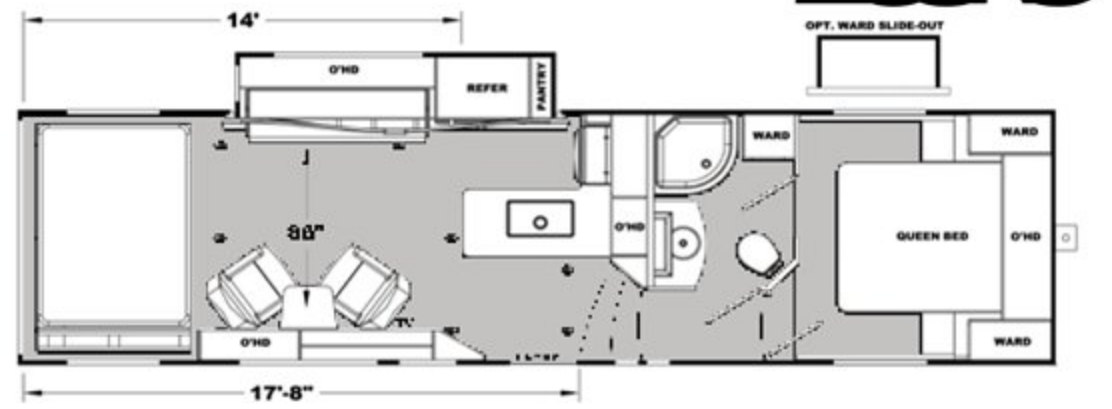
**28HG**



**28DG**



**28SG**



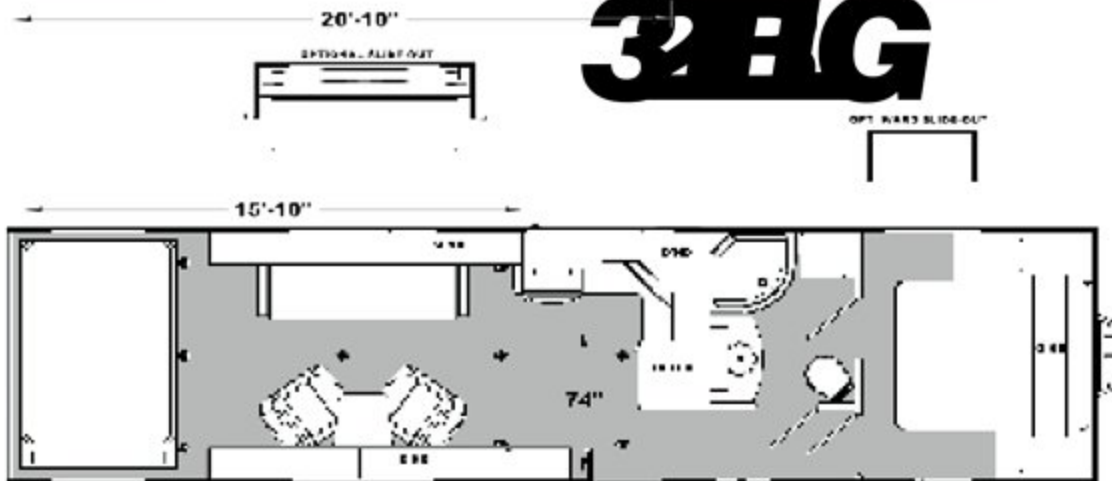
**28KS**



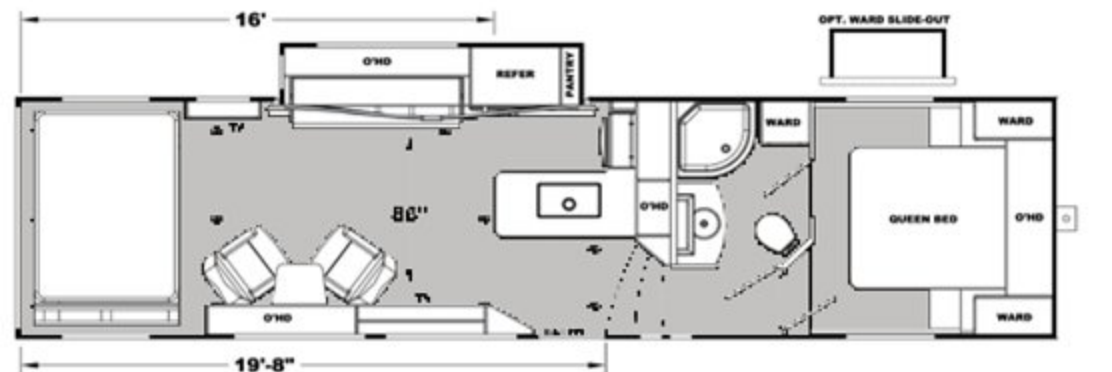
**31SG**



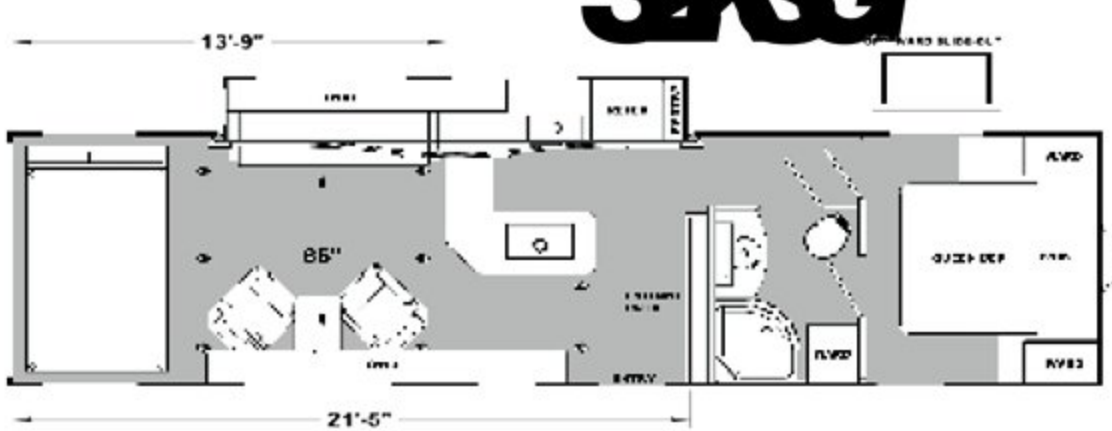
**31DG**



**32HG**



**32KS**



**32SG**



# Widebody 5th Wheels



35KSG

35KSG

35KSG

## Standard Features - Exterior

- 7,000 LB Axles w/ Zerk Fittings and Self-Adjusting Brakes (8,000 LB Axles on 31LKSG)
- Aluminum Wheels - Deluxe 16" Black w/ G-Rated Tires
- Backup Camera Ready
- Black Aluminum Fender Skirts
- Curbside Under Glow LED Light
- Electric Awning w/ LED Light
- Exterior 40" Class TV w/ Luggage Door (N/A 31LKSG)
- Folding Roof Ladder w/ Decked Walk-on Roof
- Fuel Station - 40 Gallon
- Generator 5.5K Onan w/ Transfer Switch
- Gray Fiberglass Caps - Front (w/ LED) Full Turning Radius 88°
- Gray Fiberglass Sidewalls - Aluminum Framed (Laminated)
- HD Digital Antenna w/ Park Cable Hookup
- Hi Rez LED Lights-Running, Light Bar, Flood (DS-2, RS-2, Rear-2)
- Lights - Hitch and Step
- LP - Dual 30 Lbs
- Powder Coated Chassis w/ Triple Radius Entry Step
- Ramp Door w/ Cables - 7.5' (3,000 lbs Rating)
- Spare Tire w/ Carrier
- Stabilizer Jacks - Rear (High Clearance)
- Swing-away Entry Door Assist Handle
- Tank capacities - 150 Fresh, 50 Gray, 50 Black w/ Tank Flush
- Ultra Strong Bonded Floor

## Standard Feature - Interior

- A/C Living Room - 15K BTU Ducted
- Ceiling Fan - 12V
- Electric Bed / Dinette (Bottom Bunk) and Ladder
- Furnace - 30K BTU Ducted
- Glass Enclosed Shower w/ Skylight
- In-Floor Beaver Tail Storage
- LED Lights w/ Dimmer
- Lighted Solid Surface Galley Top - Drop Range w/ Glass Cover
- Microwave w/ Built-in Range Hood - Range/Oven
- Pillowtop King Mattress w/ Bedspread and Shams
- Pleated Shades
- Refrigerator - Large Double Door (N/A 35KSG)
- Refrigerator - Side-by-Side 4-Door (35KSG Only)
- Stainless Steel Galley Sink w/ Pull-out Faucet & Water Filter
- Stereo - AM/FM/CD/DVD/BT w/ App Controls and Ext Speakers
- TV - Living Room (32" Class) (50" Class on 35KSG)
- USB Chargers - 12V (One by Electric Bed & One in Bedroom)
- Water Heater - 6 Gal DSI (Quick Recovery)

## 31LKSG



## 34LKSG





# STELLAR



35KSG



35KSG



35KSG

## Interior Colors

- Charcoal w/ Platinum Birch Wood
- Diamond w/ Skybrush Wood

## Standard Featured - Exterior

- Red, Gray

## Optional Upgrades

- 2 Extra Chairs
- 2nd A/C Bedroom - 13.5K BTU
- 2nd Electric Awning w/ LED Light (35 & 39 Only)
- 6-Point Electric Auto Leveling
- 7.0KW Generator w/ Rear 13.5 A/C (35KSG, 39LKSG Only)
- Central Vacuum System
- CSA Canada
- Enclosed Tanks - Heated
- Exterior TV Bracket & Hookups (31CRSG Only)
- Extra 40 Gallon Fuel Tank (35KSG Req's +3 Opt)
- Extra 70 Gallon Fresh Water (N/A 35KSG)
- Extra Cargo - 3' (35KSG Only)
- Fantastic Fan in Bathroom
- Folding Dinette IPO Chairs (31LKSG Only)
- Folding Dinette w/ Table (39LKSG Only)
- Inverter - 1800 Watt
- Kicker Stereo System w/ App Controls
- Lighted Logo Soffit (N/A 31LKSG)
- Living Room Slideout - Roadside (STD on 35KSG)
- Onan Energy Command 30 Auto-Start for Generator
- MorRyde Ramp Patio Fence
- MorRyde Ramp Patio Step
- Rear Screen Wall
- Rear TV Entertainment (50" Class) (35+3 & 39 Only)
- Refrigerator - XL Double Door (N/A 35KSG)
- Scarlett Furniture Trim
- Solar Panel - 160 Watt
- Stainless Steel Appliances
- TV - Bedroom (28" Class)
- Water Heater - 10 Gal DSI/Electric
- White Countertops (STD w/ Diamond Interior)
- Windows - Frameless
- Windows - Thermo Pane
- Winterize
- Wireless Backup Camera

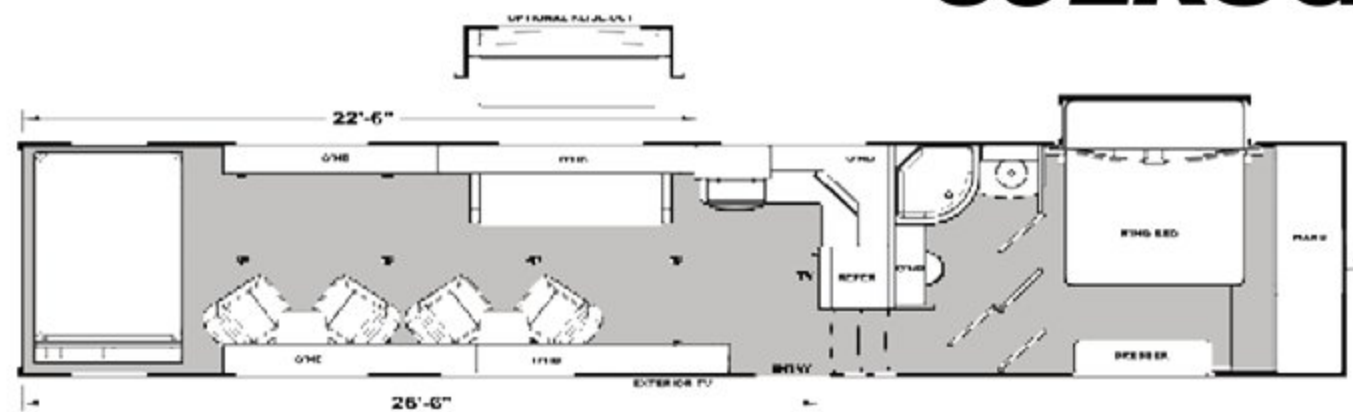
## Stellar Garage 5th Wheels Models:

- 31LKSG • 34LKSG • 35KSG • 39LKSG

## 35KSG



## 39LKSG



## 40LK



## Centurion Package - Includes

- Solid Surface Lavy Top w/ Glass Bowl & Deluxe Faucet



# Garage 5th Wheels



## Standard Features - Exterior

- 7,000 LB Axles w/ Zerk Fittings and Self-Adjusting Brakes
- Aluminum Wheels - Deluxe 16" Black w/ G-Rated Tires
- Backup Camera Ready
- Black Aluminum Fender Skirts
- Curbside Under Glow LED Lighting
- Electric Awning w/ LED Light
- Enclosed Tanks - Heated
- Exterior Shower
- Folding Roof Ladder w/ Decked Walk-on Roof
- Fuel Station - 40 Gallon
- Generator - 5.5K Onan w/ Transfer Switch
- Gray Fiberglass Caps - Front (w/ LED) - Full Turning Radius 88°
- Gray Fiberglass Sidewalls - Aluminum Framed (Laminated)
- HD Digital Antenna w/ Park Cable Hookup
- Hi Rez LED Lights-Running, Light Bar, Flood (DS-2, RS-2, Rear-2)
- Lights - Hitch and Step
- LP - Dual 30 lbs
- Powder Coated Chassis w/ Triple Radius Entry Step
- Ramp Door w/ Cables - 7.5' (3,000 lbs Rating)
- Spare Tire w/ Carrier
- Stabilizer Jacks - Rear (High Clearance)
- Swing-away Entry Door Assist Handle
- Tank Capacities - 150 Fresh, 80 Gray, 50 Black w/ Tank Flush
- Ultra Strong Bonded Floor
- Windows - Extra Large Tinted

## Standard Features - Interior

- 50 AMP Service
- A/C Living Rom - 15K BTU Ducted, Bedroom 13.5K BTU
- Ceiling Fan - 12V
- Central Vacuum System
- Electric Bed / Dinette (Bottom Bunk) and Ladder
- Furnace - 30K BTU Ducted
- Glass Enclosed Shower w/ Skylight
- Heavy Duty Flooring in Garage w/ In-Floor Beaver Tail Storage
- Kicker Stereo System w/ App Controls & Outside Speakers
- LED Lights w/ Dimmer
- Lightened Solid Surface Galley Top
- Drop Range w/ Glass Cover
- Medicine Cabinet w/ Crown Molding
- Microwave w/ Built-in Range Hood
- MorRyde Ramp Door Patio Fence
- Pillowtop King Mattress w/ Bedspread and Shams
- Pleated Shades
- Rear Screen Wall
- Refrigerator - Large Double Door (2 on 40TXSG)
- Refrigerator - Side-by-Side 4-Door (36TXSG)
- Stainless Steel Single Bowl Galley Sink w/ Pull-out Faucet & Water Filter
- Theater Seating w/ Recliners
- TV - Living Room (50" Class)
- USB Chargers - 12V (One by Electric Bed & One in Bedroom)
- Water Heater - 10 Gal DSI/Electric (Quick Recovery)





# STELLAR

## Interior Colors

- Charcoal w/ Platinum Birch Wood
- Diamond w/ Skybrush Wood

## Hi Def Exterior Graphics

- Red, Gray

## Standard Features - Interior

- 2 Extra Chairs
- 2nd Electric Awning w/ LED Light
- 7.0KW Generator w/ Rear 13.5 A/C
- CSA Canada
- Extra 40 Gallon Fuel Tank (36TXSG +3 Only)
- Extra Cargo - 3' (N/A 40TXSG)
- Fantastic Fan in Bathroom
- Fireplace - Electric
- Half Bath w/ Folding Wall
- Inverter - 1800 Watt
- Linc Pad Universal Control
- MorRyde Ramp Patio Step
- Refrigerator - XL Double Door (2) (39LKSG Only)
- Scarlett Furniture Trim
- Solar Panel - 160 Watt
- Stainless Steel Appliances
- TV - Bedroom (28" Class)
- TV - Garage w/ Inside-Outside Bracket (28" Class)
- Washer/Dryer Ready (N/A w/ Half Bath Opt)
- White Countertops (STD w/ Diamond Interior)
- Windows - Frameless
- Windows Thermo Pane
- Winterize
- Wireless Backup Camera

## Stellar Garage 5th Wheels Models:

- 36TXSG
- 40TXSG

## Centurion Package - Includes

- Solid Surface Lavy Top w/ Glass Bowl Deluxe Faucet

## Power Package - Includes

- 6-Point Electric Auto Leveling
- Onan Energy Command 30 Auto-Start for Generator





**Buy Locally**

**STELLAR**

Eclipse Recreation Vehicles Inc. strongly encourages our retail customers to purchase from their local dealership whenever possible.



**Grey Graphics**



Fuel Station

Drive-on Metal Wheel Well



**Ramp Door Patio Fence Option**



# STELLAR

## The Name Says it All

Stellar Design, function and quality, built by Eclipse RV, whose experience proves a track record of credibility. Stellar Toyhaulers offers affordable floorplans, to luxury widebody floorplans, all with you in mind. Stellar offers exclusive features for unrivaled comfort and functionality. Enjoy your adventure with the Stellar Trailer and Fifth Wheel built with you in mind.

Limited	GVWR	Dry Weight	Hitch Weight	Axle Weight	Exterior Height	O.A. Length	Fresh Water	Gray Water	Black Water	LP Capacity
19SB-LE	9900	5540	660	4880	11'-8"	26'-1"	100 Gal.	50 Gal.	50 Gal.	40#
21FS-LE	9900	6550	880	5670	11'-8"	28'-10"	100 Gal.	50 Gal.	50 Gal.	40#
Pro-Lite	GVWR	Dry Weight	Hitch Weight	Axle Weight	Exterior Height	O.A. Length	Fresh Water	Gray Water	Black Water	LP Capacity
23SB	9900	6575	720	5855	11'-8"	30'-1"	100 Gal.	50 Gal.	50 Gal.	40#
23FIB	9900	6428	913	5515	11'-8"	29'-3"	100 Gal.	50 Gal.	50 Gal.	40#
25FB	9900	7010	1010	6000	11'-8"	31'-8"	100 Gal.	50 Gal.	50 Gal.	40#
27FS	9900	6940	915	6025	11'-8"	32'-9"	100 Gal.	50 Gal.	50 Gal.	40#
Wide Lite	GVWR	Dry Weight	Hitch Weight	Axle Weight	Exterior Height	O.A. Length	Fresh Water	Gray Water	Black Water	LP Capacity
28IBLG	12000	7280	1060	6220	11'-10"	34'-4"	150 Gal.	50 Gal.	50 Gal.	60#
28KSG	13000	9443	1506	7937	12'-1"	35'-4"	150 Gal.	50 Gal.	50 Gal.	60#
30KSG	13500	9340	1360	7980	12'-1"	37'-4"	150 Gal.	50 Gal.	50 Gal.	60#
32IBLG	13000	8495	1390	7105	11'-10"	37'-4"	150 Gal.	50 Gal.	50 Gal.	60#
32KSG	13500	9390	1470	7920	12'-1"	37'-4"	150 Gal.	50 Gal.	50 Gal.	60#
Wide Lite 5th Wheel	GVWR	Dry Weight	Hitch Weight	Axle Weight	Exterior Height	O.A. Length	Fresh Water	Gray Water	Black Water	LP Capacity
28DBG	14000	8755	2035	6720	12'-11"	31'-9"	150 Gal.	50 Gal.	50 Gal.	60#
28SKS	14000	10388	2324	8064	12'-11"	33'-0"	150 Gal.	50 Gal.	50 Gal.	60#
30SKS	14000	10933	2433	8500	12'-11"	35'-0"	150 Gal.	50 Gal.	50 Gal.	60#
32DBG	14000	9273	2243	7030	12'-11"	35'-9"	150 Gal.	50 Gal.	50 Gal.	60#
Wide Body 5th Wheel	GVWR	Dry Weight	Hitch Weight	Axle Weight	Exterior Height	O.A. Length	Fresh Water	Gray Water	Black Water	LP Capacity
31LKSG	16000	10690	2690	8000	13'-3"	34'-4"	150 Gal.	50 Gal.	50 Gal.	60#
34LKSG	18000	11280	3590	7690	13'-3"	38'-10"	150 Gal.	50 Gal.	50 Gal.	60#
35KSG	18000	12100	3120	8980	13'-3"	38'-10"	150 Gal.	50 Gal.	50 Gal.	60#
35KSG+3	18000	12540	3260	9280	13'-3"	41'-10"	150 Gal.	50 Gal.	50 Gal.	60#
39LKSG	18000	12400	2870	9530	13'-3"	43'-10"	150 Gal.	50 Gal.	50 Gal.	60#
Garage 5th Wheel	GVWR	Dry Weight	Hitch Weight	Axle Weight	Exterior Height	O.A. Length	Fresh Water	Gray Water	Black Water	LP Capacity
36TXSG	18000	13360	2560	10800	13'-3"	39'-6"	150 Gal.	40&40 Gal.	50 Gal.	60#
36TXSG+3	18000	13528	2883	10645	13'-3"	42'-6"	150 Gal.	40&40 Gal.	50 Gal.	60#
40TXSG	18000	13980	3100	10880	13'-3"	42'-10"	150 Gal.	40&40 Gal.	50 Gal.	60#







All product data, graphics and photography in this brochure were as accurate as possible at press time. Subsequent refinements during the model year may be evident in the actual product. Eclipse RV, Inc. reserves the right to change prices, colors, mater equipment and specifications without notice - as well as to add, modify or discontinue models shown in promotional materials and / or on it website. Unloaded vehicle weight and carrying capacities will vary upon optional equipment.

Manufactured by Eclipse Recreational Vehicles, Inc.

3016 Kansas Ave., #14, Riverside, CA 92507

(951) 684-6868

[www.AttitudeToyhaulers.com](http://www.AttitudeToyhaulers.com)

[www.instagram.com/attituderv/](https://www.instagram.com/attituderv/)

