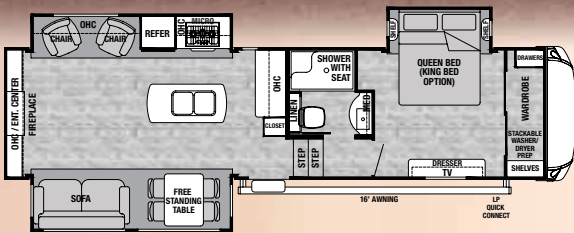
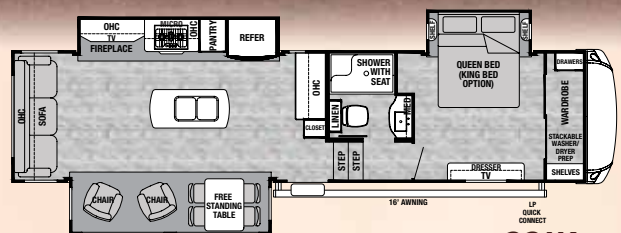


Cedar Creek

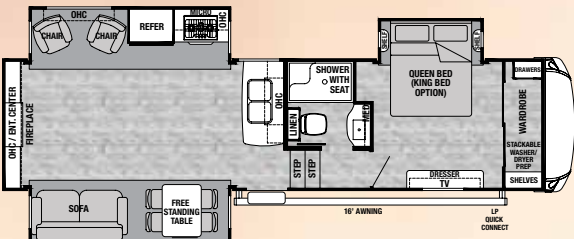
SILVERBACK EDITION



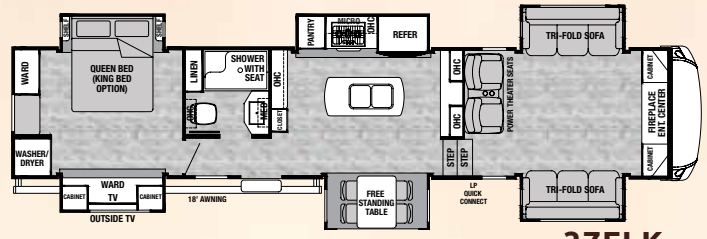
291K



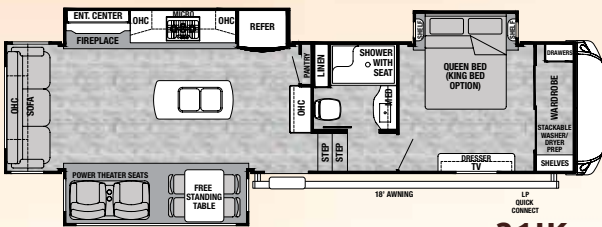
331K



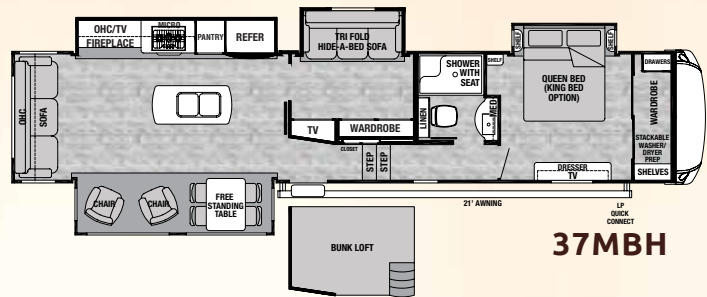
29RE



37FLK

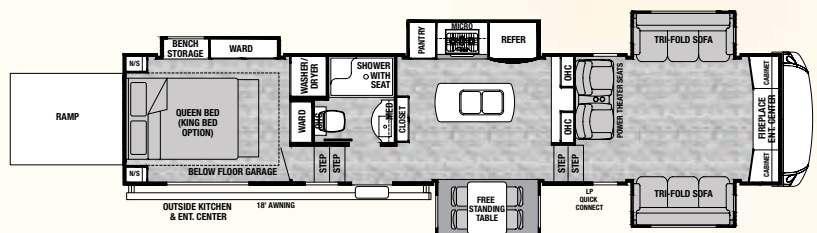


311K



37MBH

Your Cedar Creek Silverback Dealer



37RTH

THE SMART CHOICE FOR THE EXPERIENCED RV'ER

CEDAR CREEK SILVERBACK FIFTH WHEELS

SILVERBACK EDITION PACKAGE

(Mandatory Features)

- "True" Pearl Gelcoat Exterior – truly the best of the best in gelcoat exteriors. Stronger, thicker, and keeps its high gloss longer than our competitor's less expensive gel-coated exteriors
- Cedar Creek's famous, all aluminum super-structure with radius wrap metal skirt and frame
- Z-Frame
- IN-Command control system with smart phone remote app
- Jensen® 50" LED TV with swing arm in living room
- Jensen® 12 volt CD/DVD, AM/FM, Bluetooth, MP3/USB stereo system with smart control app
- Satellite prep
- High sheen, European Beech cabinet doors
- Redesigned slide fascia in living room, kitchen, and bedroom
- Deluxe blackout roller shades
- 36" Electric fireplace
- Ceiling fan
- Congoleum® Carefree flooring throughout (Except dining slide)
- Shaw® carpeting on dining slide
- Franklin™ sofa and La-Z-Boy® recliners (Where applicable)
- Central vacuum system with automatic dustpan and front storage compartment vacuum port
- Furrion® Chef's Kitchen with gas cooktop
- Full panel backsplash
- Upgraded kitchen and shower faucets
- Self-closing drawer guides
- 20" Glass door pantry (33IK, 37MBH, 37FLK, 37RTH)
- 18 Cu. ft. stainless steel, electric only, refrigerator with inverter (N/A 29IK)
- Freestanding table with leaf extension and 4 chairs (2 folding)
- Denver® 8" queen mattress
- Jensen® 32" LED TV in bedroom
- MORryde® Step Above entry steps
- 100% Automotive frameless windows
- Door side cold water port
- 50 Amp cord reel
- Heated front storage compartment
- Quick disconnect LP gas line

STANDARD FEATURES

- Dexter® Safety and Performance Package
 - Dexter® axles/brakes/suspension performance package
 - Dexter® E-Z Flex® rubber equalization system with bronze bushings and six greased zerks per side
 - Dexter® E-Z Lube® hubs
 - Dexter® Nev-R-Adjust® brakes
- 16" ST tires and aluminum rims
- 30" Over the range microwave with outside venting
- Black tank flush
- Bathroom Breeze power fan with wall switch in the bathroom
- Front hydraulic landing legs
- Cedar Creek switch control center
- Prepped for Furrion rear wireless camera
- "Quiet Zone" ducted 15,000 "HP" (High performance), air conditioner with circular motion ductwork and cold air returns. The larger compressor on this AC pushes 30% more air into the coach.
- Attic vents
- Braced and wired for second air conditioner
- Enclosed and insulated underbelly with 12 Volt heating pads on all holding tanks
- Solid wood slide room fascia in living room – Try the tap test...
- 5/8" Tongue and groove plywood floor
- Braced for optional "Level-Up" 6-point hydraulic level system
- LED tail lights and lower front lights
- Locked docking station with water heater by-pass, slide room controls, outside shower, satellite and cable hook-ups, 12 Volt battery disconnect, city and fresh water fills, and easy to use tank handles
- 12 Gallon gas/electric DSI water heater
- Create-A-Breeze Fantastic fan with rain sensor in kitchen
- LED lighting fixtures throughout
- Digital thermostat for heat and air
- 48" Shower with seat and glass doors
- Porcelain toilet with top swirl flush
- Franklin™ trifold Comfort Sleep sofa (37MBH Only)

OPTIONS

- "Level-Up" 6-point hydraulic level system
- "Quiet Zone" ducted Penguin 15,000 BTU roof mount second air conditioner
- Create-a-Breeze fan with rain sensor and thermostat in the bedroom IPO vent (N/A second AC option)
- Shaw® carpeting with rebond pad in living room
- Shaw® carpeting with rebond pad in bedroom
- Power Franklin® theater seating
- Dinette table IPO free standing table and chairs
- Denver® mattress 8" king bed
- "Champagne Dreamer" 10" luxury queen mattress
- "Champagne Dreamer" 10" luxury king mattress
- 8 Cu. ft. gas/electric refrigerator with solid glazed wood door front (29RE)
- 18 Cu. ft. stainless steel, gas/electric refrigerator (N/A 29RE, 29IK)
- 20 Cu. ft. stainless steel refrigerator with double drawers, ice maker (N/A 29IK, 29RE)
- Washer/dryer prep
- Splendide combination washer/dryer
- Splendide stackable washer/dryer
- Dual pane windows
- 1-1/4" Bike rack hitch receiver
- Furrion rear camera – mounted
- Awning toppers
- Solar prep
- 200W Solar panel
- Roof mounted King® Satellite
- Matching Chottoman with interior storage
- Generator prep
- 5.5 Marquis Gold LP generator

MODEL	29IK	29RE	31IK	33IK	37FLK	37MBH	37RTH
GVWR	13965 lb.	13985 lb.	14132 lb.	14067 lb.	16764 lb.	16135 lb.	18000 lb.
Hitch Weight	1965 lb.	1985 lb.	2132 lb.	2067 lb.	2764 lb.	2135 lb.	3176 lb.
UVW	10630 lb.	10705 lb.	11223 lb.	10880 lb.	13425 lb.	12620 lb.	14190 lb.
CCC	3335 lb.	3280 lb.	3212 lb.	3187 lb.	13339 lb.	3515 lb.	3810 lb.
Exterior Length	33' 11"	33' 11"	36'	36' 11"	41' 1"	42' 2"	41' 1"
Exterior Height	13' 5"	13' 5"	13' 5"	13' 5"	13' 5"	13' 5"	13' 5"
Exterior Width	96"	96"	96"	96"	96"	96"	96"
Fresh Water	69 gal.	69 gal.	69 gal.	69 gal.	69 gal.	69 gal.	69 gal.
Gray Water	80 gal.	80 gal.	80 gal.	80 gal.	80 gal.	80 gal.	80 gal.
Black Water	40 gal.	40 gal.	40 gal.	40 gal.	40 gal.	40 gal.	40 gal.
Awning Size	16 ft.	16 ft.	16 ft.	16 ft.	18 ft.	21 ft.	18 ft.

(3 axles)

GVWR (Gross Vehicle Weight Rating) - is the maximum permissible weight of the unit when fully loaded. It includes all weights, inclusive of all fluids, cargo, optional equipment and accessories. For safety and product performance do NOT exceed the GVWR.

GAWR (Gross Axle Weight Rating) - is the maximum permissible weight, including cargo, fluids, optional equipment and accessories that can be safely supported by a combination of all axles.

UVW (Unloaded Vehicle Weight)* - is the typical weight of the unit as manufactured at the factory. It includes all weight at the unit's axle(s) and tongue or pin and LP Gas. The UVW does not include cargo, fresh potable water, additional optional equipment or dealer installed accessories.

*Estimated Average based on standard build optional equipment.

CCC (Cargo Carrying Capacity)** - is the amount of weight available for fresh potable water, cargo, additional optional equipment and accessories. CCC is equal to GVWR minus UVW. Available CCC should accommodate fresh potable water (8.3 lbs per gallon). Before filling the fresh water tank, empty the black and gray tanks to provide for more cargo capacity.

**Estimated average based on standard build optional equipment

Each Forest River RV is weighed at the manufacturing facility prior to shipping. A label identifying the unloaded vehicle weight of the actual unit and the cargo carrying capacity is applied to every Forest River RV prior to leaving our facilities. The load capacity of your unit is designated by weight, not by volume, so you cannot necessarily use all available space when loading your unit.

Cedar Creek
SILVERBACK EDITION

The Smart Choice for the Experienced RV'er

FOREST RIVER INC. CEDAR CREEK DIVISION

501 Hawpatch Road ■ Topeka, IN 46571

Phone: 260-593-2404

Parts & Service Phone: 260-593-4000

On The Web at: www.forestriverinc.com/silverback



All information contained in this brochure is believed to be accurate at the time of publication. However, during the model year, it may be necessary to make revisions and Forest River, Inc., reserves the right to make all such changes without notice, including prices, colors, materials, equipment and specifications as well as the addition of new models and the discontinuance of models shown in this brochure. Therefore, please consult with your Forest River dealer and confirm the existence of any materials, design or specifications that are material to your purchase decision. ©2018 Cedar Creek. A division of Forest River, Inc., a Berkshire Hathaway Company. 9/18 Silverback

Find us on
Facebook