

Carbon

TOY HAULERS

BUILT FOR

THE ROAD AHEAD



The ultimate ownership experience.

The goal of Keystone RV Company is to surprise and delight our owners at each and every touchpoint. We're happy when our campers are happy, and we are committed to providing the very best ownership experience in the industry.



**Keystone RV
Company**

1 EASIER SHOPPING.

At Keystone, we make choosing an RV as easy as finding the Big Dipper on a dark summer night. With comprehensive online product information, Key Connect™ product advisors, and an unparalleled dealer network, we will help you select the perfect RV for your family's adventure.

2 INNOVATIVE THINKING.

The road's a nicer place when you have the industry's smartest features behind you. Keystone leads the pack in patented innovations that make our RVs safer, more comfortable, and easier to operate.

3 LONG HAUL QUALITY.

To keep you on the road, there are certain things we just won't build a Keystone RV without. Game-changing features like our Unified Wiring Standard, Tru-Fit™ five-point slide construction, and no-fail Tuf-Lok™ A/C duct joiners combined with exhaustive testing and inspections are some of the reasons why Keystone is able to offer our owners the industry's best 3-year limited structural warranty.

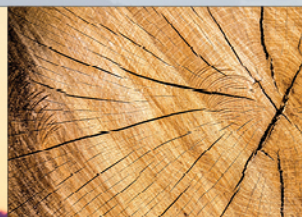
4 WORRY-FREE CUSTOMER SERVICE.

Wherever the road takes you, you're never too far from an authorized Keystone service center. We also offer live service assistance, ultra-fast parts shipping, online maintenance tips and tricks, and a single-point warranty claims policy. *That's* peace of mind.

5 KEYSTONE NATION.

When you choose Keystone, you become a part of one of the largest camping families in the country. We're Keystone Nation. A friendly community where people share photos, travel tips and amazing stories – all in the spirit of camaraderie and adventure. Come join us.

Experience the Carbon lifestyle by visiting [#keystonecarbon](#)



Keystone EXCLUSIVE Innovations

Year after year, Keystone RV's experienced team delivers Built For the Long Haul quality you expect and exclusive innovations you won't find anywhere else.



**3-year Limited Structural Warranty,
1-year Limited Base Warranty**

Every new Keystone RV comes with the industry's best three-year limited structural warranty AND a one-year limited base warranty. Ask your dealer, visit keystonerv.com, or call Keystone Owner Relations for details.



4G LTE and Wi-Fi Prep

All Carbons are equipped with a new Furrion® antenna that integrates 4G LTE and Wi-Fi with standard VHF/UHF/AM/FM reception.



KeyTV™

No more connection guesswork or poor reception. KeyTV offers a game-changing, single point of control of over-the-air, cable, and satellite feeds. Visit us online for more information.



Color-Coded Unified Wiring Standard

Easy-to-trace circuits simplify electrical and entertainment system troubleshooting.



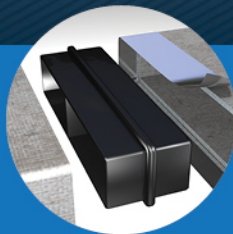
HitchVision™

Simplifies hitch hook-up with "no looking back" convenience.



In-floor Heating Ducts

Distributes heat evenly for greater comfort.



Tuf-Lok® A/C Duct Joiners

Crush resistant design securely joins ductwork and A/C units, and drastically reduces chilled-air leaks to boost cooling efficiency and comfort.



Tru-fit™ Slide Construction

A more durable slide room design that minimizes functional motor and structural stress, resists leaking.

CARBON



TOY HAULERS

Never stop exploring.

Regardless if you're traveling down a dirt road to the dunes or the interstate to a theme park, Carbon is built for the road ahead. Equipped with all of the essentials for the road less traveled, Keystone RV's Carbon is a lighter weight and more affordable toy hauler, making it an enticing option for weekend warriors. With features like frame-welded tie-downs, painted front cap and floorplans built for entertaining, these haulers have brawn, brains and beauty that will thrill even the most seasoned adventurers.

For more information, please visit keystonerv.com/carbon

Details Matter

Built with extra features to transform your camping experience.



Soft-Close Cabinet Doors

Concealed hinges with hydraulics to ease doors closed gently and silently.



Automotive Grade Painted Fiberglass Cap

Carbon caps include Keystone's exclusive KeyGuard™ protective coating designed to provide chip and rock protection.



UPGRADED Roto-Flex™ Pin Box

Reduces chucking and absorbs road shock, resulting in a smoother ride and less wear and tear on your vehicle.



Wired and ready for Solar

Carbons have wiring in place for roof-mounted solar panels and internal controls, making it easy for you to go green and give your coach greater boondocking and campsite flexibility.



Solid Surface Countertops

Durable solid surface countertops are easy-to-clean and provide ultimate food prep flexibility.



Furrion® Backup Camera Prep

Easily add ultimate safety and peace-of-mind for changing lanes, merging and making wide turns.



Stainless Steel Appliances (select models)

Includes an oversized 12 cu.ft. refrigerator, 33% larger than other toy haulers in its class.



Dexter 7,000 lb. Axles with Electric Self-Adjusting Brakes

Equipped with U.S. made, heavy-duty axles, and electric self-adjusting brakes that significantly decrease stopping distance and cause less wear and tear on your tow vehicle.



Frame-welded Tie Downs

Industry-leading 5,000 lb. capacity tie downs increase hauling safety and security.

Safety, Comfort
& Convenience



more product detail at
www.keystonerv.com/Carbon



Warm, Inviting & Sophisticated

Carbon's décor features travertine-inspired flooring, espresso cabinetry, stunning solid surface countertops, and modern brushed nickel drawer pulls and door handles. A 78" entry door is the tallest entry door on the market and was designed for those who live larger than life.



Built-in Comfort

Relax at the end of the day with Carbon's ultra-comfortable pillow-top seating.



Abundant Storage

Carbon makes it easier to travel with the gear you need.

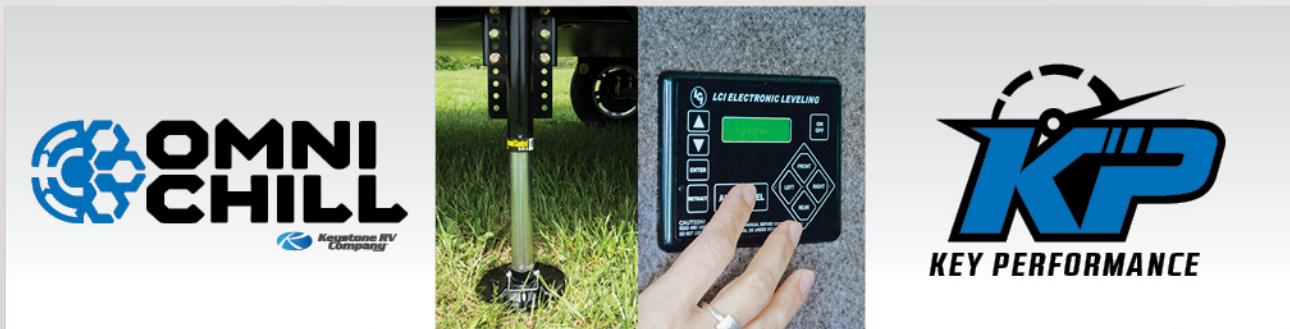




more product detail at
www.keystonerv.com/Carbon

Carbon | TOYHAULERS

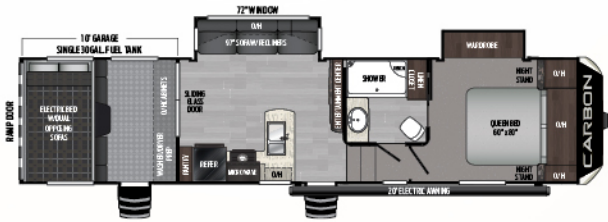
- EXCLUSIVE Omni-Chill™ technology, high efficiency A/C's for maximum cooling
- 5,000 lb. frame-welded tie-downs
- Solar panel prep on roof, standard
- 78" main entry door (largest height in the industry)
- Painted front cap
- Soft-close hardwood cabinet doors
- Furrion® backup camera prep
- Stainless steel appliances
- Dexter® E-Z Lube® 7,000 lb. axles with electric self-adjusting brakes
- 6-point hydraulic leveling system
- Solid-surface kitchen countertops
- Reclining furniture with heat, light and massage
- USB outlets in all sofa slide-outs
- 12 cu. ft. refrigerator (select models)
- F-rated tires
- Dyna Span® floor decking with 25-year warranty
- Dual-entry in every master bathroom
- Furrion® Wi-Fi antenna
- 8' ramp door with spring-assist
- Three-zone stereo with DVD player
- KeyTV™ Keystone's revolutionary single-source, easy-to-use controller for over-the-air, cable and satellite television



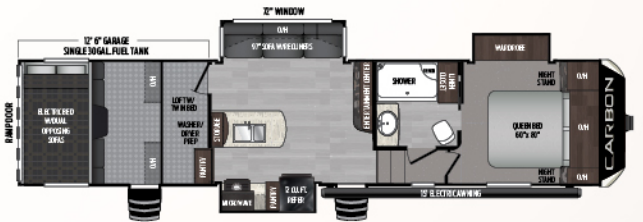
EXCLUSIVE Omni-Chill™
Dual 3/4 ton residential, high efficiency air conditioners that give you the ability to operate using minimum of 30 amps.

6-point Hydraulic Auto Level
Balance and easy set-up with the push of a button with 6-point auto level.

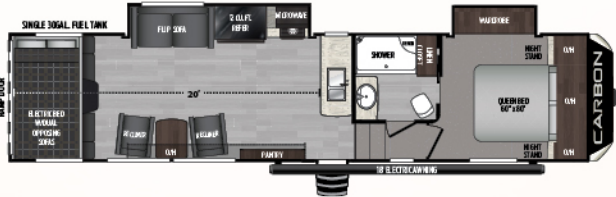
A Key Performance™ Brand
Dedicated toy hauler design and manufacturing team to deliver a higher standard of durability and performance.



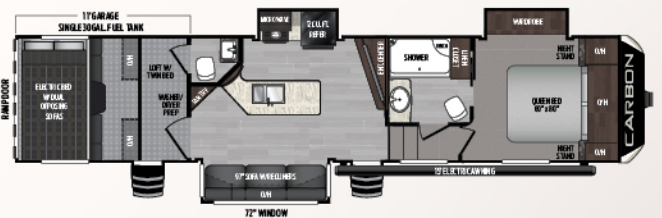
337 Tandem-axle, two slides, 10' garage
Weight: 11710 LBS. | Length: 35' 11"



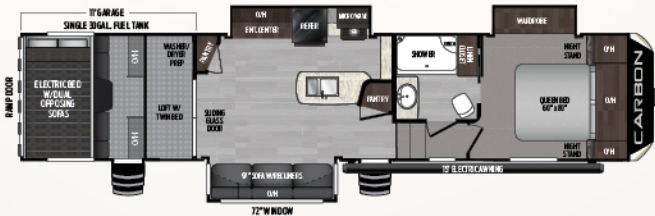
347 Tandem-axle, three slides, 12' 6" garage
Weight: 12551 LBS. | Length: 38' 2"



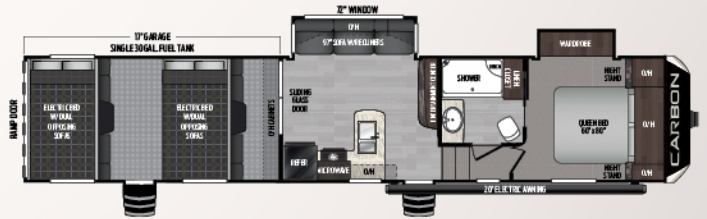
349 Open concept, tandem-axle, two slides, 20' garage
Weight: 11417 LBS. | Length: 36' 11"



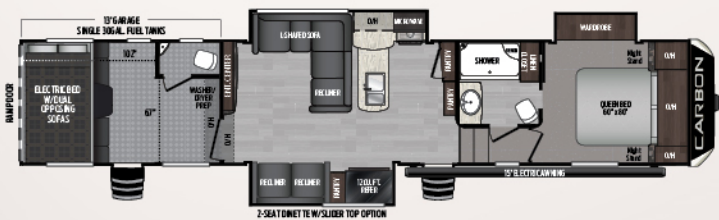
357 Tandem-axle, three slides, 1 1/2 bath, 11' garage
Weight: 12842 LBS. | Length: 38' 11"



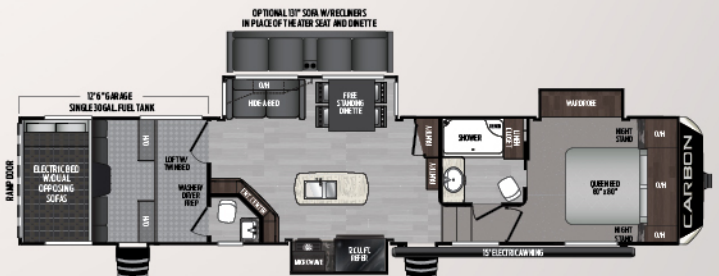
364 Tandem axle, three slides, 11' garage
Weight: 12786 LBS. | Length: 38' 11"



387 Triple-axle, two slides, 17' garage
Weight: 13495 LBS. | Length: 42' 8"



403 L-shaped sofa, 1 1/2 bath, triple-axle, 13' garage
Weight: 14090 LBS. | Length: 43' 6"



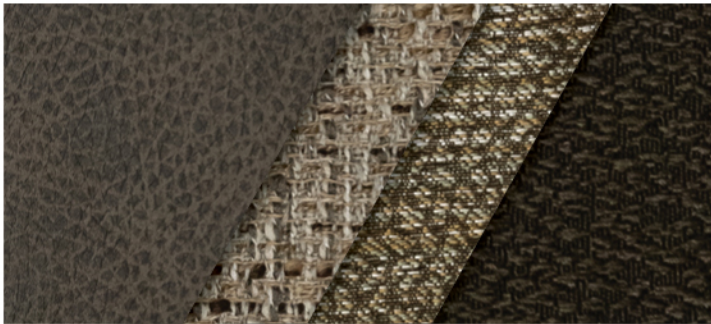
417 Island kitchen, 1 1/2 bath, triple-axle, 12' 6" garage
Weight: 14116 LBS. | Length: 43'

TOY HAULERS

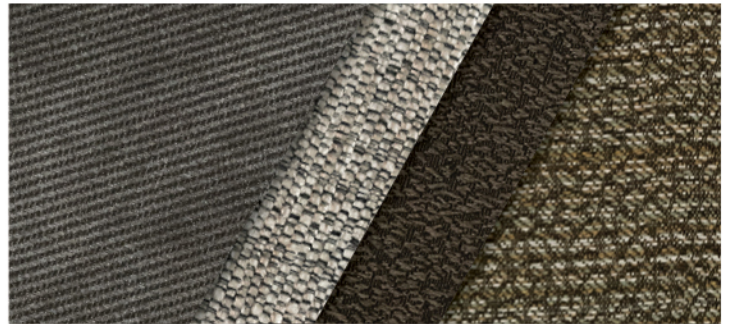
MODEL	WEIGHT	CARRYING CAPACITY	HITCH WEIGHT	FRESH WATER	WASTE WATER	GRAY WATER	LPG	LENGTH*	WIDTH	HEIGHT	AWNING
337	11710	5045	2755	106	44	82	60	35' 11"	8' 4"	13' 2"	20'
347	12551	4449	3050	106	44	82	60	38' 2"	8' 4"	13' 2"	15'
349	11417	5303	2720	106	44	82	60	36' 11"	8' 4"	13' 2"	18'
357	12842	4158	3060	106	82	82	60	38' 11"	8' 4"	13' 2"	15'
364	12786	4214	3010	106	82	82	60	38' 11"	8' 4"	13' 2"	15'
387	13495	5505	3260	106	44	82	60	42' 8"	8' 4"	13' 6"	20'
403	14090	4910	3410	106	82	82	60	43' 6"	8' 4"	13' 6"	15'
417	14116	4884	3385	106	82	82	60	43' 0"	8' 4"	13' 6"	15'

DISCLAIMER: Product information is as accurate as possible as of the date of publication of this brochure. All features, floor plans, and specifications in this brochure are subject to change without notice. Please also consult Keystone's web site at www.keystonerv.com for more current product information and specifications. **Tow Vehicle Disclaimer.** CAUTION: Owners of Keystone recreational vehicles are solely responsible for the selection and proper use of tow vehicles. All customers should consult with a motor vehicle manufacturer or their dealer concerning the purchase and use of suitable tow vehicles for Keystone products. Keystone disclaims any liability or damages suffered as a result of the selection, operation, use or misuse of a tow vehicle. **KEYSTONE'S LIMITED WARRANTY DOES NOT COVER DAMAGE TO THE RECREATIONAL VEHICLE OR THE TOW VEHICLE AS A RESULT OF THE SELECTION, OPERATION, USE OR MISUSE OF THE TOW VEHICLE.** *Length is defined as the distance from the centerline of hitch pin/coupler to rear bumper of trailer. Please review owner's manual prior to purchase for more information on service warranties, extended use, towing and maintenance. Owner's manuals can be found at keystonerv.com.

DÉCOR OPTIONS



GRAVITY



QUANTUM



more product detail at
www.keystonerv.com/Carbon

STANDARDS AND OPTIONS

INTERIOR	EXTERIOR
Omni-Chill™ high efficiency A/C's	Rota Flex pin box
5,000 lb. frame-welded tie-downs	Solar-panel prep on roof
Residential reclining furniture with heat, light, and massage	Wi-Fi antenna
USB outlets in sofa slide-outs	Backup camera prep
Stainless steel 12 cu. ft. refrigerator (select models)	F-Rated Tires
Quick-recovery 12-gal. gas/electric DSI water heater	Convenience center (central location all system hook-ups)
Residential microwave	Outside shower—hot and cold with 25' coil hose
Stainless steel, 3-burner range w/ 22" oven	Black tank flush
Upgraded kitchen high-rise faucet	30 gallon Generator fuel tank with fuel station
Square, stainless steel sink	Exterior cable/satellite TV hook-up
Roll-up sink cover/drying rack	Rear LED spotlights
Solid surface kitchen countertops	Outdoor LED activity light
Soft-close hardwood cabinet doors	One-Touch electric awning with LED lighting
100 lb. full-extension, ball-bearing drawer guides	E-Z® radius steps
Night shades	Large, tinted safety glass windows (80% tint)
Power vent in master bathroom	Heated and lighted pass-through storage
Porcelain foot-flush toilet	Aluminum roof ladder
Fiberglass one-piece shower surround	Rain gutters with extended drip spouts
Shower skylight	Aluminum RAM air ventilation system (in garage)
Residential wood interior passage door	Painted front cap with LED recessed lighting
Cable TV and satellite prep	Spare tire
TV antenna with booster	Dexter® E-Z Lube® 7,000 lb. axles
Bedroom TV hook-up	12"x 2" self-adjusting brakes
Control panel with fuel gauge	Premium 8-lug 16" radial tires
Removable edged cargo carpet	Heated and enclosed underbelly
Automatic transfer switch with generator prep	Double welded aluminum construction
Battery quick-disconnect	8' spring-assisted ramp door
50 AMP service	Upgraded graphics with 5-year warranty
Ducted A/C (in garage)	5" pre-engineered roof truss rafters
LED lighting	One-piece TPO (12-year warranty)
Electric beds with dual opposing flip-down sofas	Electric front and rear jacks
Dyna Span® floor decking (25-year warranty)	12" I-Beams (select models)
50" LED HDTV in living room	78" main entry door with built-in shade
Interior speakers (4)	Large entry door grab handle
Exterior marine speakers (2)	
3-zone stereo with DVD player	OPTIONS
35,000 BTU furnace	Onan® 5,500 watt generator
Washer/dryer prep	Frameless dual-pane windows
Carbon monoxide detector	Ramp patio with awning and patio steps
Smoke detector	6 point hydraulic level-up
LP gas detector	Three-season patio door (replaces pull-down screen)
Fire extinguisher	Front electric beds with dual opposing sofas (387 only)
Pull-down screen in cargo area	131" sofa in place of dinette and dual recliners (417 only)
	Dinette seat with slider-top (403 only)

BUILT FOR THE LONG HAUL



PRINT 12.2018

